

Initial Setup

Machine box contents



Machine



Power lead



Water tube
(attached to machine)



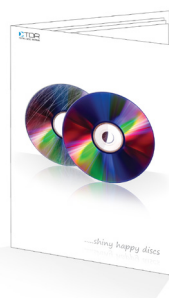
Consumables starter pack



Stone filter
(attached to water tube)



Waste tube



User guide

Consumables Starter Pack



Polish bottle
(will be empty)
already poured in to bottle on rear of machine



Water additive
(with syringe)



5 x Pad holders
(yellow, green, red, black, violet)



1 x Black pad



5 x Yellow pads



5 x Green pads



5 x Red pads



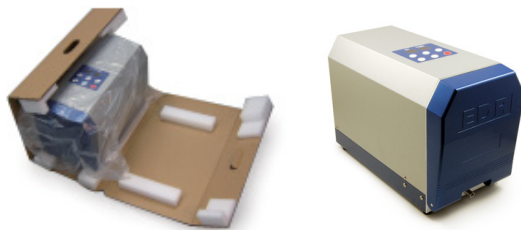
2 x Blue pads




1 x Violet pad

Initial Setup

Unpacking the machine



1. Lift out carefully
2. Lower to ground
3. Unwrap machine

 Please keep packaging in case the machine needs to be returned at any point.

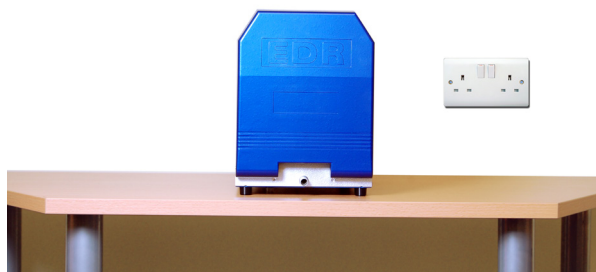
Contents

The contents of the box is listed on the back of this sheet. Please check to make sure that the contents are complete. If you have any queries about the contents please contact Technical Support, Monday to Friday, 9am to 5pm on:

0800 412 5424

Positioning the machine


The machine needs to be placed on a clean, water resistant, flat surface. It needs to be near a power socket and have space to the front or side to store the water and waste bottles.



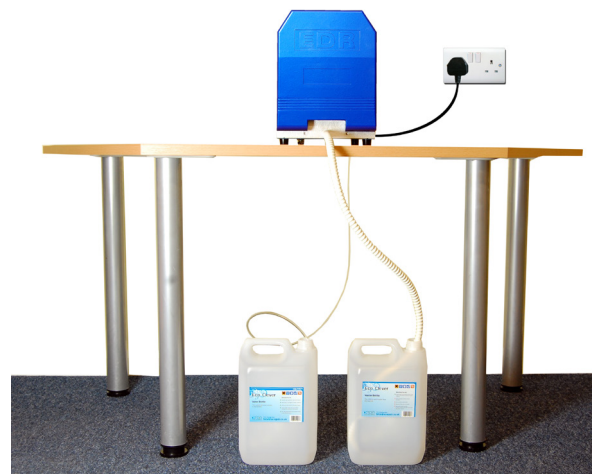
Water and Waste

To operate the machine you will need to provide two suitable containers, one for fresh water going in to the machine, and one to collect the waste coming out of the machine. Please make sure the waste container is of equal size or larger than the water container.

1. Place both bottles below the machine in a stable location.
2. Feed the small clear tube coming from the back of the machine into the water bottle, making sure the stone filter reaches the bottom.
3. Attach the thicker ribbed tube to the waste exit on the front of the machine and feed into an empty waste bottle.

 Once you are happy that the machine is in a suitable position, cut the waste tube down so that it does not sag or kink.

This prevents waste liquid backing up into the machine.



Powering up the machine

Once you have positioned the machine and the bottles are set up, plug the machine into the nearest power socket and switch on both the plug and the machine switches.

The display on the machine will show '88 88' and the machine will make a series of noises as it calibrates itself. Once it is ready the front door will open.

Each pad is attached to a matching coloured pad holder using velcro. The pad holder is then held in place on the machine by a magnet.

Attaching the pad holders

With the door open you will see the turret inside. The pad holders are attached with magnets. Ensure that the colour of the pad holder corresponds with the colour indicator on the turret.



With pad holders installed you are now ready to go!

Now refer to the user guide for instructions on repairing your first disc.