

## How to Remove the Platen Table Module on the Eco Clever

### Before starting,

With the front door in the open position disconnect the power to the machine



### What you'll need

2.5 mm Hex/Allen Key

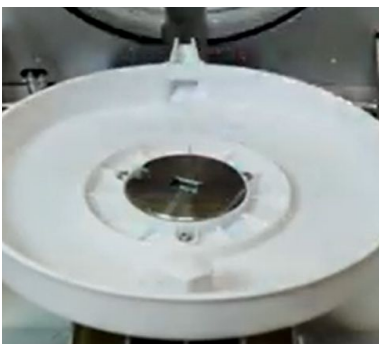
### Instructions

Make sure the hole for the hex key is clear of old compound or any debris to allow the key to fit well

Now just undo the screw. It's quite a long screw

Once you remove the screw you can lift out the centre pin and then lift off the platen.

It's advisable to remove and clean behind here to keep it clear and running smoothly. Also clean the back of the platen



[Watch the Video](#)



[These parts are available through our website here](#)