

Introduction and Product Compliance

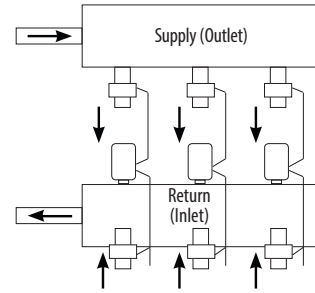
The AH2430 is an actuator that can be used on applications such as heating / cooling circuits. The AH2430 has two sensors which are connected between the self-balancing actuator and the fluid supply and return, or inlet and outlet of the manifold. The self-balancing actuator will measure the temperature sensors and adjust the actuator to maintain a differential temperature of 14°F (7°C).

Installation

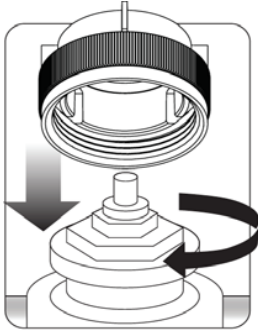


24V

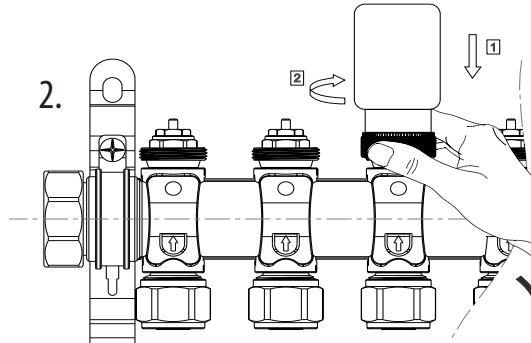
For 24VAC /DC Auto Balancing Actuators



1.



2.



- Connect the brown/blue wires to a switched 24V (AC or DC) supply.
- Install the AH2340 on the manifold, ensuring that it is fully tightened. Once installed, **DO NOT** tighten or loosen.
- If a balancing valve is installed, ensure that it is fully open.
- Install the pipe temperature sensors facing forward on the supply and return pipes 4" (10 cm) downstream of the manifold.

CALIBRATION (This procedure may take up to 30 minutes)

It is critical that the AHR240 be calibrated once properly installed on the manifold as the pin length of valves from different manufacturers will vary. Do not tighten or loosen the AH2430 collar during or after calibration. There must be a constant flow of water through the supply manifold and the water temperature be maintained at a constant 86°F (20°C) or higher throughout the calibration process.

- Apply power to the AH2430 and wait at least 20 seconds, but not more than 60 seconds, then remove power.
- When power is next applied, the LED on the AH2430 will flash for 2 minutes before starting to stroke the valve.
- The AH2430 will stroke the valve to its fully open position and then to fully closed.
- Next, the AH2430 actuator will open the valve in small increments, every 2 minutes, until heated water is detected in the supply pipe. This is called the valve open point (VOP).
- Once the VOP is determined, the valve will fully open one more time to establish the range of motion.

IMPORTANT NOTE: Once the above calibration is complete, DO NOT tighten or loosen the AH2430 collar or re-calibration will be required.

NORMAL OPERATION

- Once calibrated the AH2430, when powered, will flash the LED for two minutes before fully opening the valve.
- The AH2430 will modulate the valve between VOP and fully open depending on the on the required temperature difference. When the zone thermostat is satisfied, the AH2430 will close the valve completely until the next call for heat.

SMC-QG-AH2430-EN-2020.08v1
Copyright © SALUS North America, Inc. 2018

For PDF Instruction Manual go to www.salusinc.com

531ESLBA23110



www.salusinc.com

support@salusinc.com

+1 (885) 557-2587

SALUS NORTH AMERICA, INC.

Salus Warranty

SALUS North America, Inc. ("Salus") warrants that for a period of five (5) years ("Warranty Period") from the date of purchase by the consumer ("customer"), this device, excluding batteries ("Product"), shall be free of defects in materials and workmanship under normal use and service in accordance with all supplied instructions. During the warranty period, Salus shall, at its option, repair or replace any defective Products, at no charge for the device. Any replacement and/or repaired devices are warranted for the remainder of the original Warranty Period or ninety (90) days, whichever is longer.

This warranty does not cover removal or reinstallation costs. This warranty does not apply to any Product (i) which has been modified, repaired, or altered, except by Salus or an authorized Salus representative, (ii) which has not been maintained in accordance with any handling or operating instructions supplied by Salus, or (iii) which has been subjected to unusual physical or electrical stress, misuses, abuse, negligence or accidents.

This warranty is the only express warranty Salus makes for the Product. Any implied warranties, including warranties of merchantability or fitness for a particular purpose, are limited to the Warranty Period or the shortest period allowed by law.

SALUS SHALL NOT BE LIABLE FOR ANY LOSS OR DAMAGE OF ANY KIND, INCLUDING ANY SPECIAL, INCIDENTAL OR CONSEQUENTIAL DAMAGES RESULTING, DIRECTLY OR INDIRECTLY, FROM ANY BREACH OF ANY WARRANTY, EXPRESS OR IMPLIED, OR ANY OTHER FAILURE OF THIS PRODUCT. Some states and provinces do not allow the exclusion or limitation of incidental or consequential damages, or limitation on the duration of implied warranties of merchantability or fitness, so these exclusions or limitations may not apply to you.

No oral or written information or advice given by Salus or Salus-authorized representative shall modify or extend this warranty. If any term is held to be illegal or unenforceable, the legality or enforceability of the remaining terms shall not be affected or impaired.

Customer's sole and exclusive remedy under this limited warranty is product repair or replacement as provided herein.

- If a Product under warranty is defective, the customer may:
 - Contact the party ("Seller") from which the Customer purchased the Product to obtain an equivalent replacement product after the Seller has determined that the Product is defective and the customer is eligible for a replacement, or
 - Contact Salus Service at support@salusinc.com, to determine whether the device qualifies for a replacement. If a replacement is warranted and is shipped prior to the return of the device under warranty, a credit card is required and a hold may be placed on the customer's credit card for the value of the replacement until the returned device is verified as eligible for replacement, in which case, the customer's credit card will not be charged. This warranty gives you specific legal rights, and you may also have other rights that vary from jurisdiction to jurisdiction.

For questions regarding this warranty, please contact SALUS North America, Inc. at: (855) 557-2587 or support@salusinc.com.



AH2430 Auto-balancing Actuator



QUICK START GUIDE

FCC Statement

This equipment has been tested and found to comply with the limits for a Class B digital device, pursuant to Part 15 of the FCC Rules. These limits are designed to provide reasonable protection against harmful interference in a residential installation. This equipment generates uses and can radiate radio frequency energy and, if not installed and used in accordance with the instructions, may cause harmful interference to radio communications. However, there is no guarantee that interference will not occur in a particular installation. If this equipment does cause harmful interference to radio or television reception, which can be determined by turning the equipment off and on, the user is encouraged to try to correct the interference by one or more of the following measures:

- Reorient or relocate the receiving antenna.
- Increase the separation between the equipment and receiver.
- Connect the equipment into an outlet on a circuit different from that to which the receiver is connected.
- Consult the dealer or an experienced radio/TV technician for help.

Changes or modifications not expressly approved by the party responsible for compliance could void the user's authority to operate the equipment.

This device complies with part 15 of the FCC Rules. Operation is subject to the following two conditions: (1) This device may not cause harmful interference, and (2) this device must accept any interference received, including interference that may cause undesired operation.

Industry Canada / Industrie Canada

This Class B digital apparatus complies with Canadian ICES-003.
Cet appareil numérique de la classe B est conforme à la norme NMB-003 du Canada.