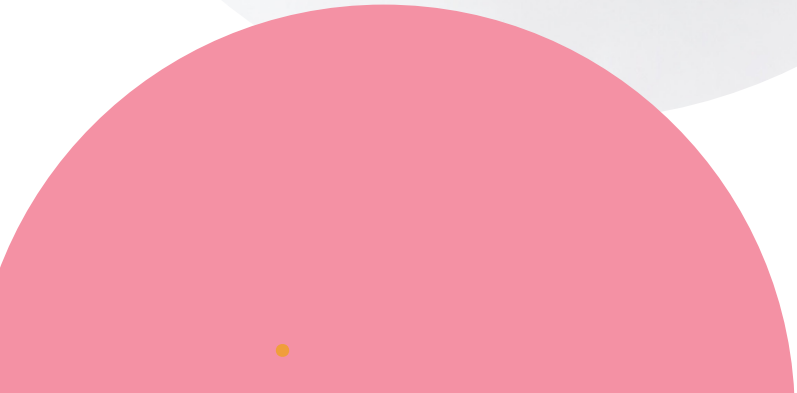
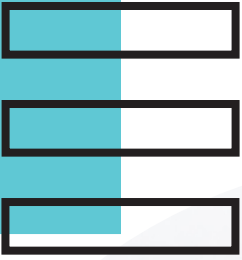


FOX



YOU WILL NEED

1. 2 PACKET CAKE MIXES
2. SHAPETINS FOX DECORATING SET
3. RED + YELLOW (OR ORANGE) FOOD COLOURING

HOW TO BAKE

| | | |
|---------|-------------------------|------------|
| 1x DOME | 1 & 3/4 PACKETS (1140g) | 60 MINUTES |
| 1x CUBE | 1/4 PACKET (160g) | 20 MINUTES |

HOW TO ASSEMBLE

1. PLACE THE DOME CAKE, DOME SIDE UP, ON YOUR CAKE BOARD.
2. CUT THE CUBE CAKE IN HALF DIAGONALLY, THEN IN HALF AGAIN DIAGONALLY TO MAKE FOUR SMALL TRIANGLES. YOU WILL ONLY NEED TO USE TWO OF THESE TRIANGLES.
3. POSITION TWO OF THE TRIANGLES ON THE TOP OF THE DOME CAKE, USING OUR IMAGE AS A GUIDE. SECURE USING TWO WOODEN SKEWERS IN EACH TRIANGLE.

*NOTE: YOU MAY FIND IT EASIER TO ICE THE DOME PART OF THE CAKE BEFORE ATTACHING THE TRIANGLES.

HOW TO DECORATE

1. MAKE ICING ACCORDING TO THE INSTRUCTIONS ON THE PACKET.
2. ADD A DROP OF RED FOOD COLOURING AND A DROP OF YELLOW FOOD COLOURING TO THE ICING AND MIX THROUGH.
3. ICE THE ENTIRE CAKE.
4. CUT OUT THE EDIBLE PAPER DESIGNS. REMOVE THE PLASTIC BACKING AND PLACE ONTO THE ICED CAKE, USING OUR IMAGE AS A GUIDE.