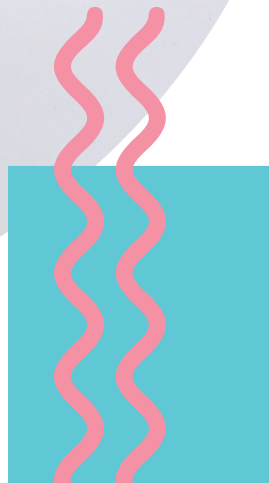


BEAR



BEAR

HOW TO BAKE

2x DOME	FOR EACH CAKE, MAKE 2 PACKET MIXES TOGETHER (1300g) . USE 1 3/4 (1140g) IN THE DOME TIN. SET ASIDE 1/4 (160g) FOR THE CYLINDER TIN.	60 MINUTES
1x CYLINDER	2X 1/4 PACKET MIXES (160g) FROM EACH DOME CAKE (1/2 PACKET MIX IN TOTAL - 325g)	30 MINUTES

HOW TO ASSEMBLE

1. CUT THE ROUNDED TOP OFF BOTH THE DOME CAKES.
 2. PLACE ONE OF THE DOME CAKES, DOME SIDE DOWN, IN THE CENTRE OF YOUR CAKE BOARD.
 3. PLACE THE SECOND DOME CAKE, DOME SIDE UP, ON TOP OF THE FIRST DOME CAKE.
 4. POSITION THE SMALL CYLINDER CAKE TO THE FRONT OF THE BOTTOM DOME CAKE, USING OUR IMAGE AS A GUIDE.
- * TO MAK A SMALLER VERSION OF THIS CAKE, MAKE ONE DOME AND ONE 1/4 (160g) CYLINDER. POSITION THE DECORATIONS USING THE SMALLER IMAGE AS A GUIDE.

YOU WILL NEED

1. 4 PACKET CAKE MIXES
2. SHAPETINS BEAR DECORATING SET
3. BLACK FOOD COLOURING
4. COCOA

HOW TO DECORATE

1. MAKE ICING ACCORDING TO THE INSTRUCTIONS ON THE PACKET.
2. ADD COCOA TO THE ICING AND MIX THROUGH. IF YOU PREFER A DARKER BROWN, ADD A DROP OR TWO OF BLACK FOOD COLOURING.
3. ICE THE ENTIRE CAKE.
4. CUT OUT THE EDIBLE PAPER DESIGNS. REMOVE THE PLASTIC BACKING FROM THE EYES AND NOSE AND PLACE ONTO THE ICED CAKE. USING OUR IMAGE AS A GUIDE. LEAVE THE PLASTIC BACKING ON THE EARS AND ATTACH A TOOTHPICK TO THE BACK. USING STICKY TAPE ATTACH THE EARS TO THE CAKE USING THE TOOTHPICKS, USING OUR IMAGE AS A GUIDE.