

NATURAL AND CONCRETE STONE

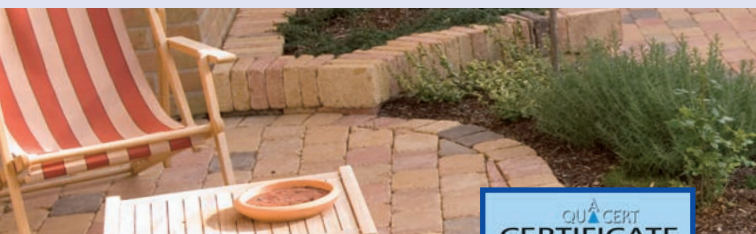
for terraces, balconies, drive ways, etc.



infos and tips for clean surfaces

NATURAL AND CONCRETE STONE – outdoors –

terraces, balconies, drive ways, etc.
clean and well-maintained



- LITHOFIN products have been used with a high degree of success for over 50 years by tilers and masons. Based on the experience of experts and supported by on-going laboratory tests, LITHOFIN products have become synonymous with quality.
- The certified LITHOFIN-Quality Management guarantees top quality and optimal results.
- LITHOFIN is only available from specialised dealers, tile outlets and builders merchants.
- LITHOFIN products are recommended by leading tile producers and natural stone suppliers.

This information should be considered to be informal and non-binding. The products must be used according to local conditions and materials. Instructions must be read carefully and followed closely.

Where no previous experience is available, or in cases of doubt, test the product in an inconspicuous area.

© Lithofin AG. Reprint, including in extracts only with approval.

The LITHOFIN product range for natural and artificial stone was developed specifically for the optimal surface treatment of these materials. The products support their outstanding properties: the natural appearance is emphasised and daily maintenance simplified.

cleaning, protecting, maintaining



A quick guide to stone

Hard stone such as granite, gneiss, gabbro, etc. are often used in outdoor areas. Common surface finishes include rough sawn and flamed. These stones are very hard wearing and very resistant.

Soft stone such as marble, limestone and slate are not as common in outdoor areas. The surfaces are sensitive to scratching and often not resistant to frost.

Concrete or artificial stone is a well-suited material for outdoor areas. The strength of concrete combined with its versatility (thanks to a wide variety of additives) makes this material attractive for many architectural tasks. The surface finish ranges from honed to brushed to sand-blasted. These finishes guarantee slip resistance and ease of maintenance. Light colours and rough surfaces do require additional attention.

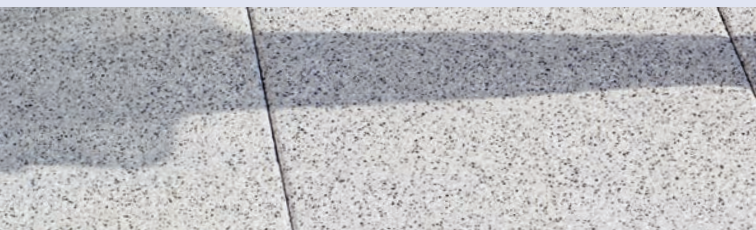
Concrete slabs simply consist of pure concrete in different colours and shapes. These slabs are especially popular in drive ways and similar applications.

Look for this symbol on the packaging for information on environmental properties of the individual products. All products are manufactured using the safest raw materials possible, and they are registered with the German Office of Environmental Protection. The surfactants are biodegradable according to EU-regulations. The packaging is made of environmentally friendly polyethylene (PE) or tinplate and can be recycled.



Use biocides (Lithofin MN Outdoor Cleaner, Lithofin ALGEX) safely. Always read labelling and product information before use.

QUICK GUIDE



The following information refers to untreated natural and concrete stone on terraces, balconies, garden paths, drive ways, etc. Please note, that concrete stone is not resistant to acid.

1.	CLEANING
a)	newly installed surfaces (initial cleaning) Lithofin MN Builders' Clean removes mortar residues and builders' dirt
b)	refurbishing old surfaces (with dark deposits) Lithofin MN Outdoor Cleaner makes surfaces bright and clean
Other, stubborn types of dirt: please refer to table on Page 7.	
2.	PROTECTING AND EMBELLISHING
a)	protecting against staining Lithofin MN Stain-Stop (solvent based)
b)	alternative Lithofin STAINSTOP ›W‹ (water based)
c)	improving appearance Lithofin MN Colour Intensifier enhances the natural colour structure
3.	MAINTAINING (every-day cleaning)
a)	every-day maintenance Lithofin MN Wash & Clean
b)	occasional basic cleaning Lithofin MN Power-Clean removes general and greasy dirt
c)	preventive treatment (1-2 times/per year in open areas) Lithofin ALGEX removes and prevents algae growth

PACKAGING:

All products are available in 1 ltr. bottles and in 5 ltr. canisters.

The product containers feature detailed directions for use. In cases of doubt and where no prior experience exists, test the product in an inconspicuous area.



	cons. on 50 m ² granite (flamed)	cons. on 50 m ² granite (sawn)	cons. on 50 m ² concrete stone (sand blasted)	cons. on 50 m ² concrete stone (honed)
	3 ltr.	2 ltr.	3 ltr.	4 ltr.
	5 ltr.	3 ltr.	5 ltr.	3 ltr.
	5 ltr.	4 ltr.	5 ltr.	4 ltr.
	5 ltr.	4 ltr.	5 ltr.	4 ltr.
	5 ltr.	4 ltr.	5 ltr.	5 ltr.
	approx. 20ml / 10 ltr. water			
	2 ltr.	2 ltr.	2 ltr.	2 ltr.
	1 ltr. (for 150 m ²)	1 ltr. (for 150 m ²)	1 ltr. (for 150 m ²)	1 ltr. (for 150 m ²)

CLEANING


Newly installed surfaces

Garden soil and sand contain colouring substances. Care and cleanliness during the installation process will help prevent staining. Some manufacturers pre-treat their slabs, largely preventing staining and making cleaning simpler. Still a new surface must be cleaned after installation. The table on the opposite page will show you the right LITHOFIN cleaner.

After many years ...

... the surface is still technically sound and fulfills its purpose. There are, however, dirt deposits and sometimes algae and moss due to moisture, etc. Lithofin MN Outdoor Cleaner will restore the surface to its original appearance.

Lithofin MN Outdoor Cleaner	
<ul style="list-style-type: none">• removes deposits caused by plants, dark spots, etc.	<ul style="list-style-type: none">• highly effective• self-acting• free of acids
Consumption: : approx. 1 ltr. for 7 to 10 m ²	



PLEASE NOTE

All outdoor surfaces turn dark with time. Lithofin MN Outdoor Cleaner makes these surfaces bright and clean. They will appear (almost) as good as new.



PROBLEM	SOLUTION on granite, gneiss, sandstone, quartzite, blasted concrete stone
cement and mortar residues	Lithofin MN Builders' Clean * diluted 1:7
white and yellow efflorescence**	Lithofin MN Builders' Clean * diluted 1:7
stubborn cement residues, efflorescence, dirt deposits	Lithofin CEMENT-AWAY * diluted up to 1:10 determine by testing prior to use
mould and deposits caused by plants	Lithofin MN Outdoor Cleaner
general, oily and greasy dirt	Lithofin MN Power-Clean Lithofin WAX-OFF
oil and grease stains	Lithofin WAX-OFF Lithofin OIL-EX
green algae and moss	Lithofin ALGEX
cleaning old and very dirty surfaces – outdoor use only	Lithofin MN Outdoor Cleaner

* on limestone and honed concrete stone, dilute heavily and test suitability before use.

** the efflorescence may appear during drying as part of the manufacturing process. They do not affect the quality of the concrete and can be removed with adequate cleaning agents.

PROTECTING AND EMBELLISHING

Rough or sawn surfaces often seem colourless and bland. A colour intensifying impregnator darkens the surface and the colours become more brilliant. The surface seems livelier and fresher. At the same time, this treatment protects the surface. Impregnators make the stone water repellent, which prevents the penetration of dirt. Algae and moss can no longer grow unhindered in the pores.

Barbecues and other types of food handled on balconies and terraces may leave behind unsightly grease and oil stains. Water and oil repellent impregnators offer optimal protection in these cases.

Products

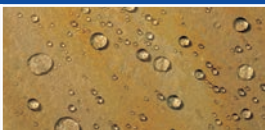
DESIRED EFFECT *	surface finish: finely honed	surface finish: rough, absorbent, e.g. blasted
protection against water and oil stains Lithofin STAINSTOP WC / Lithofin MN Stain-Stop	cons.: approx. 8 m ² per ltr.	cons.: approx. 6 to 8 m ² per ltr.
enhancing colour structure Lithofin MN Colour Intensifier	cons.: approx. 10 to 15 m ² per ltr.	cons.: approx. 10 m ² per ltr.
protecting against water and moisture Lithofin SPLASH-STOP	cons.: approx. 8 m ² per ltr.	cons.: approx. 6 to 8 m ² per ltr.

* in case of pre-treated stones, test effect in an inconspicuous area or on a left over piece.



DID YOU KNOW?

Impregnators protect and enhance, they simplify maintenance and prolong the useful lives of all stone surfaces.



PROTECTION

Course of Action:

We highly recommend testing the products prior to use because the effect may differ from one type of stone to the next. Apply according to the instructions on the product label. Used surfaces should be cleaned thoroughly before application.

Important: only treat completely dry surfaces. Drying time for newly installed surfaces: four weeks to three months (depending on type of installation).

Lithofin STAINSTOP ›W‹ Lithofin MN Stain-Stop

- optimum protection against oil and grease
- invisible
- long-term effect
- free of solvents, nearly odourless (STAINSTOP ›W‹)
- solvent based (MN Stain-Stop)

Consumption: 1 ltr. for up to 8 m²



Lithofin MN Colour Intensifier

- protects and embellishes
- colour enhancing effect
- solvent based
- easy to apply

Consumption: 1 ltr. for up to 15 m²

Please Note: Lithofin SPLASH-STOP achieves a water repellent effect without darkening the colours.



MAINTAINING

Outdoor surfaces do not need a lot of care. Open areas not covered by a roof, such as paths, drive ways, etc. should be swept with a broom from time to time.

Surfaces in the shade, especially near trees will with time become discoloured. Lithofin ALGEX will clean these surfaces. Treating these types of surfaces with Lithofin ALGEX once or twice per year as a preventive measure will keep them clean and bright.

Lithofin ALGEX

- gently removes green, dark deposits and general dirt
- concentrate
- free of chlorine and acids
- preventive effect

Consumption: 1 ltr. for approx. 150 m²



IMPORTANT

Pressure washers should be used sparingly or not at all because they may damage the surface. Especially concrete stone becomes rougher and more prone to getting dirty.

Maintaining

Terraces and balconies should always look their best. Occasionally wiping the surfaces removes dust and general dirt.

On only slightly dirty, smooth surfaces simply add one squirt of Lithofin MN Wash & Clean to the water.

On dirty surfaces use Lithofin MN Power-Clean instead. Scrubbing, especially on rough surfaces, greatly supports the effectiveness of the cleaner. This way, you'll remove even the most stubborn dirt - ideally suited for spring time cleaning.

Other types of dirt and blemishes: please refer to Page 7.

Lithofin MN Power-Clean

- removes grease and other stubborn dirt
- concentrate
- free of acids
- free of solvents

Consumption: 1 ltr. for 10 to 15 m²



For indoor surfaces, please refer to

CARING FOR NATURAL STONE AND ARTIFICIAL STONE -INDOORS-



for ceramic and porcelain tiles

The Lithofin KF-Range improves the appearance and enhances the properties of unglazed ceramic surfaces.



for marble, natural and artificial stone

The Lithofin MN-Range for cleaning, protecting and maintaining conserves the natural beauty of all types of stone.



for cotto and terracotta

The Lithofin TC-Range includes everything a beautiful terracotta needs - protective treatments and maintenance products are carefully matched for optimal results.



for further information and service please call

01962 732 126

www.lithofin.co.uk

Agents for Great Britain:
CASDRON Enterprises Ltd.
Wood End, Prospect Road
Alesford, Hampshire SO24 9QF
Fax: +44 (0)1962 735 373
E-Mail: sales@lithofin.co.uk

Manufactured in Germany by:
LITHOFIN AG
D-73240 Wendlingen
Fax +49 (0)7024 9403-40
E-Mail: info@lithofin.de

Your LITHOFIN dealer: