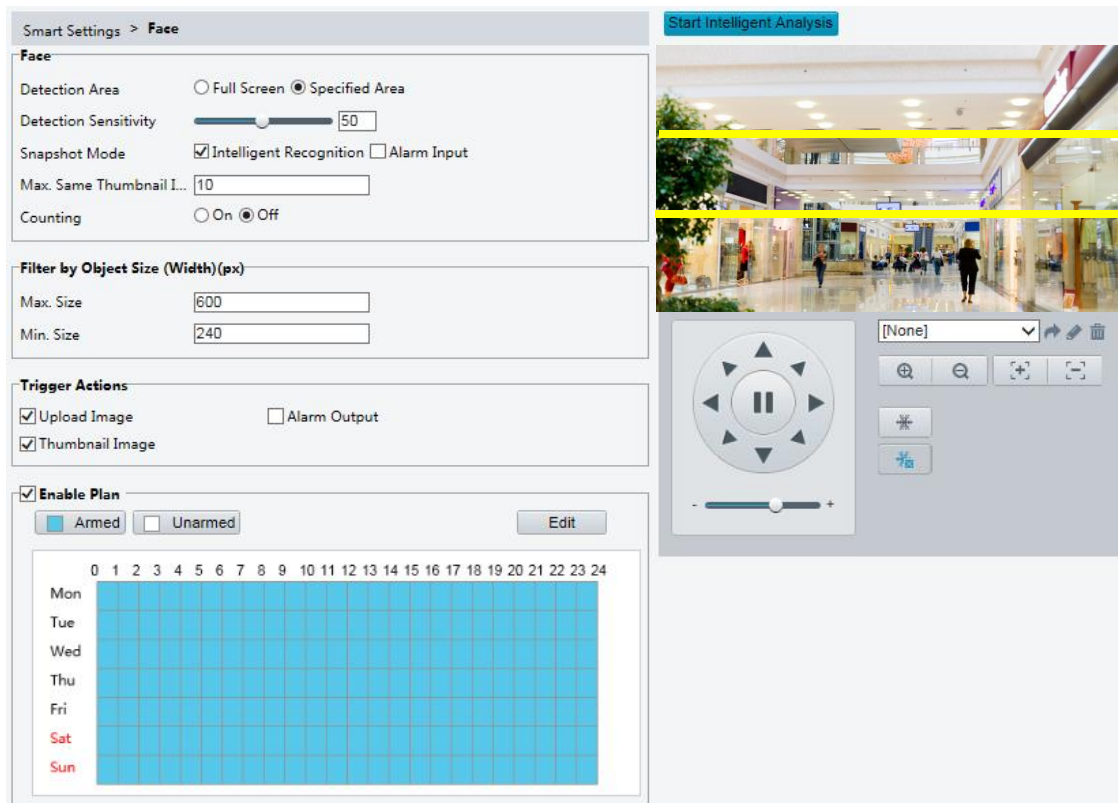
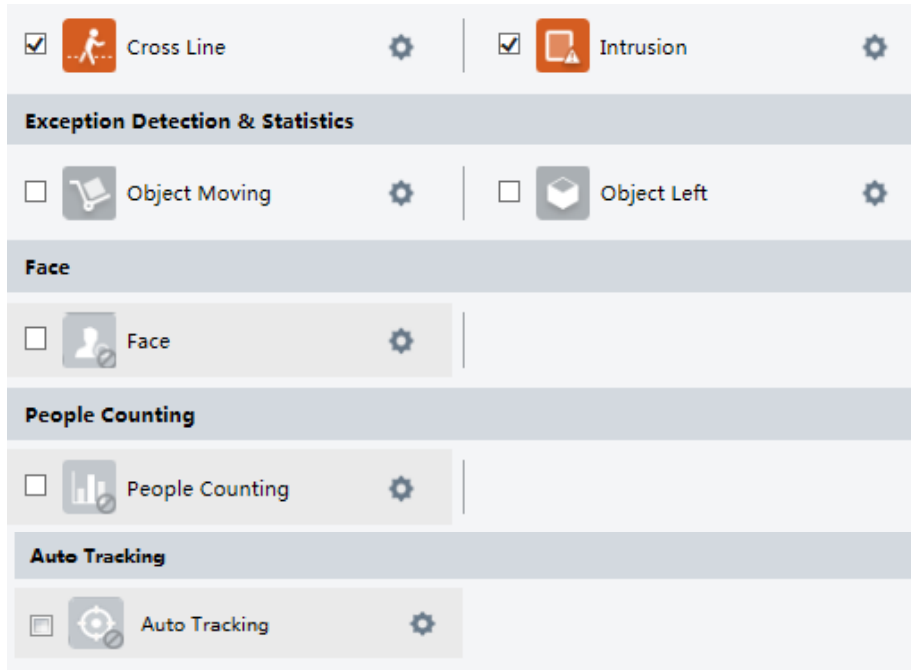


How to set Face Detection?

Answer:

Note: This function or management page may vary with models. Please see actual Web interface for details.

1. Click **Setup > Intelligent > Smart Settings**. Choose **Face** and then click .



2. Drag the borders to set the intended position and range.
3. Set detection parameters according to actual needs.
4. Set the alarm-triggered actions and arming schedule as required. For the detailed steps and alarm-triggered actions descriptions, refer to *How to set Motion Detection Alarm*.
5. Click **Save**.
6. Click **Start Intelligent Analysis**.