



OIL CATCH CAN PCV DELETE KIT

AUDI RS3/TTRS 2.5TFSI

Instruction Manual



Notes:

When disassembling the car, be sure to keep all fasteners so they can be reused. It is recommended that you get some kind of compartmented tray to organize the fasteners, such as a fishing tackle box or several large ice cube trays. All directions used in this manual (right, left, front, etc.) are based on if you were sitting in the driver seat of the car.

These instructions assume that you have basic mechanical skills and several varieties of basic hand tools in order to install the kit. If you have any questions about the installation, feel free to contact our JDY representative.

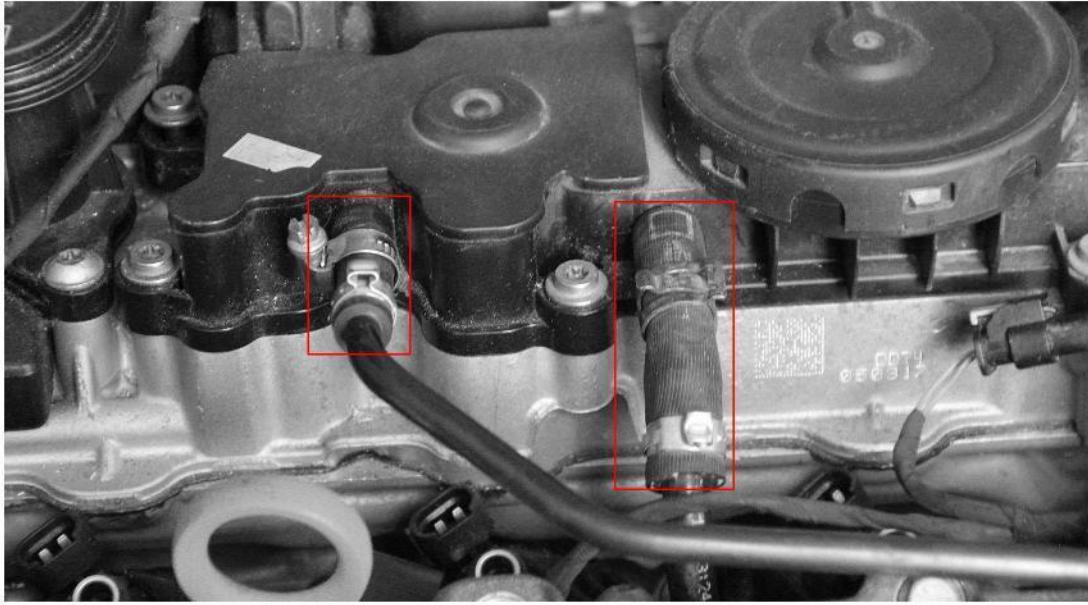
Check the quantity of the components



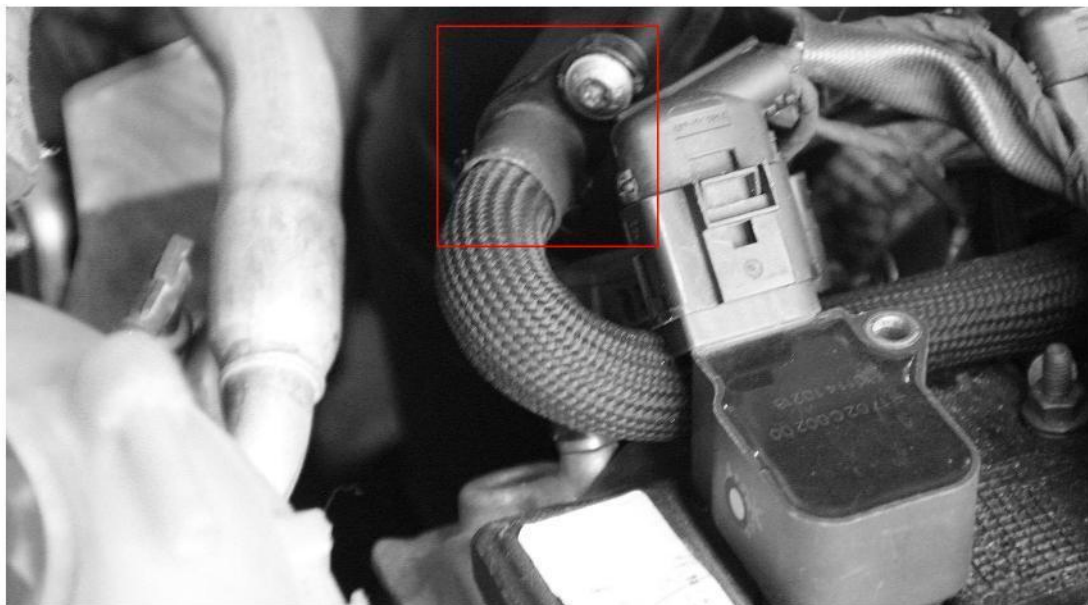
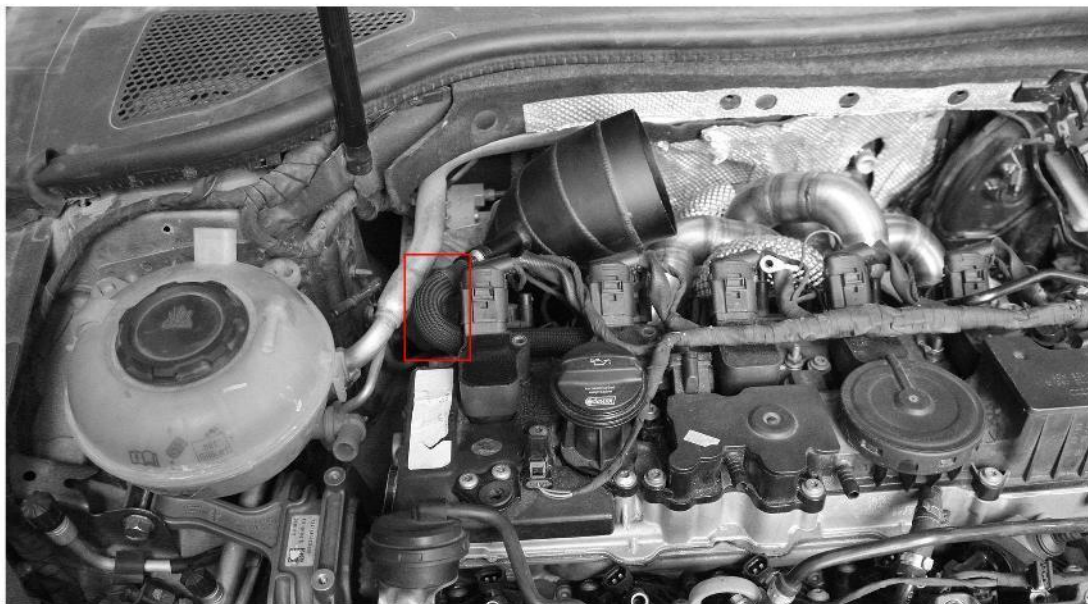
Audi RS3/V2/TTRS 2.5TFSI Engine Oil Catch Can PCV Delete Kit Checklist

NO		Descripton	Spec	Quanti				
1	Assembly	Upper body		1				
2		Lower body		1				
3		Intermediate partition		1				
4		Upper and lower cover fixing bolt (stainless steel cylindrical head internal hexagon M5*75)		M5*75	6			
5								
6						Intermediate partition fixing bolt (stainless steel round head internal hexagon M4*10)	Round head M4*10	4
7						Oil drain plug (stainless steel internal hexagon M10*1.25)	M10*1.25	1
8			Side bracket	90 degrees	1			
9			Lower bracket	flat	1			
10			Sealing washer (customized)		1			
11			Bracket bolt (stainless steel countersunk head internal hexagon M6*12)	Countersunk head M6*12	3			
12	Assembly	Oil gauge assembly		1				
13		Oil gauge seal ring (outer 12.4*2.6mm)	Outer 12.4*2.6mm	1				
14	Assembly	PCV Valve		1				
15		PCV valve backplate		1				
16		PCV valve backplate bolt (stainless steel countersunk head internal hexagon M4*15)	Countersunk head M4*15	10				
17		M10*1 aluminum alloy hollow bolt	M10*1	2				
18		M10-8mm aluminum alloy fish-eye dome nut	M10-8mm	2				
19		M10*1.25 stainless steel internal hexagon block	M10*1.25	1				
20		Orange one-way valve		2				
21	Assembly	Intake pipe AN12 fitting		1				
22		Intake pipe AN12 fitting O ring (outer 19*2.4mm)	Outer 19*2.4mm	2				
23	Assembly	Carbon canister fitting O ring (outer 12.4*2.6mm)	Outer 12.4*2.6mm	1				
24		Carbon canister fitting		1				
25		M10*1 stainless steel internal hexagon plug	M10*1	2				
26		PCV Valve fixing bolt (stainless steel countersunk head internal hexagon M6*23)	Countersunk head M6*23	9				
27		AN10-AN10 conversion fitting		2				
28		AN10 straight fitting + AN10 hose + AN10 ORB 90-degree fitting assembly pipe		2				
29		AN12 fish-eye fitting + AN12 hose + AN12 30-degree fitting assembly pipe		1				
30		Bracket bolt 2 (stainless steel square head internal hexagon M6*15)	Square head M6*15	1				
31		Bracket screw nut (stainless steel flange M8)	M8	1				
32		Bracket screw nut double-ended stud (unequal length M8-M8)	M8-M8	1				
33		AN10 dual hose clamp		1				

1.Remove the two vacuum pipes from OEM PCV Valve



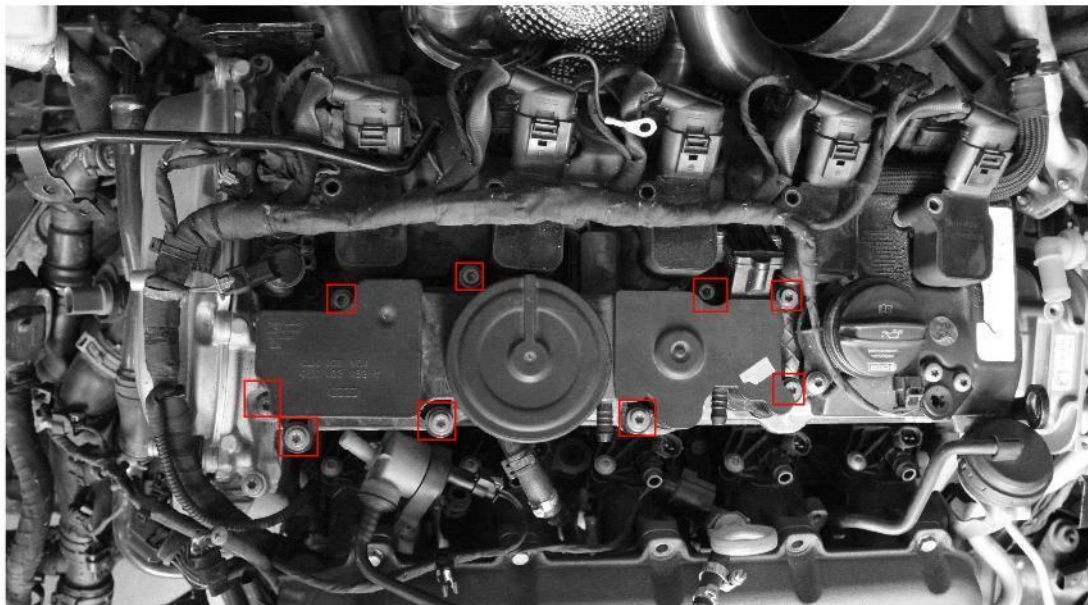
2.Remove the bolt on the OEM EGR(Exhaust Gas Recirculation) pipe with T30 socket



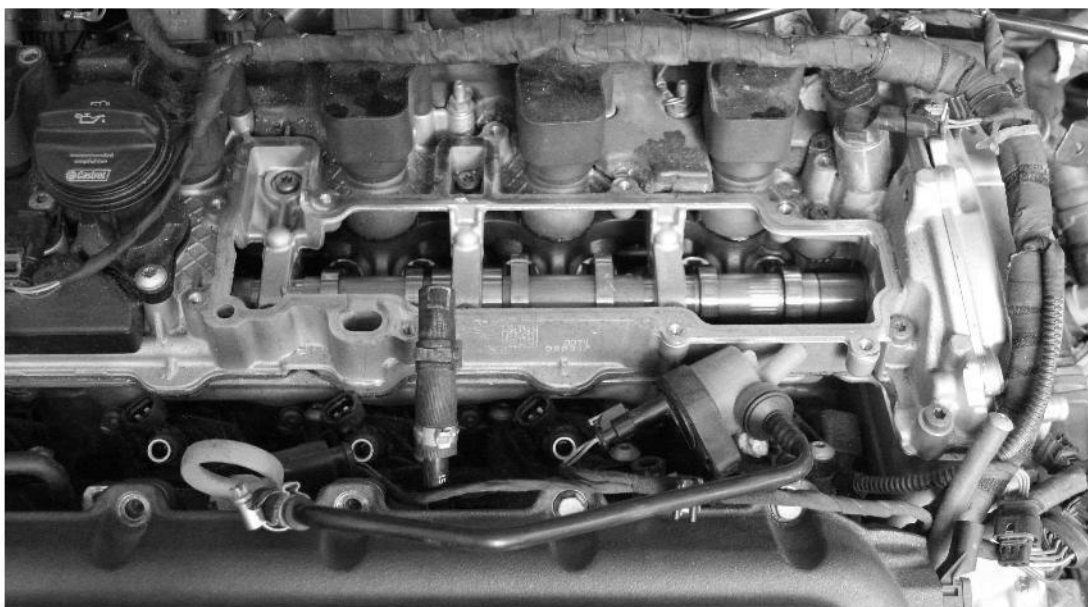
3.Remove the OEM EGR(Exhaust Gas Recirculation) pipe



4.Remove the bolts on the OEM PCV Valve



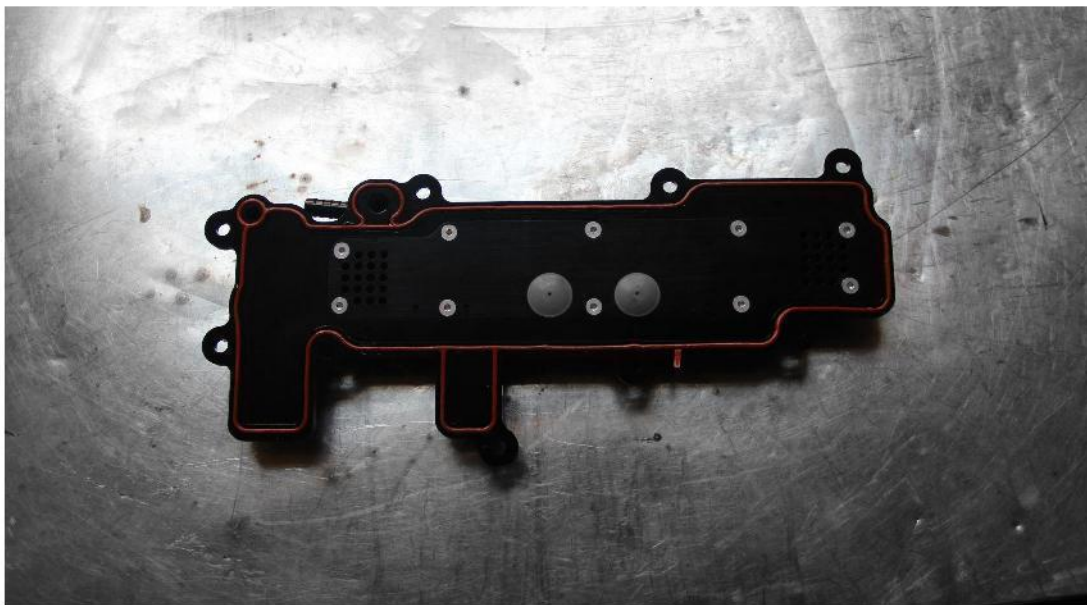
5.Remove the OEM PCV Valve



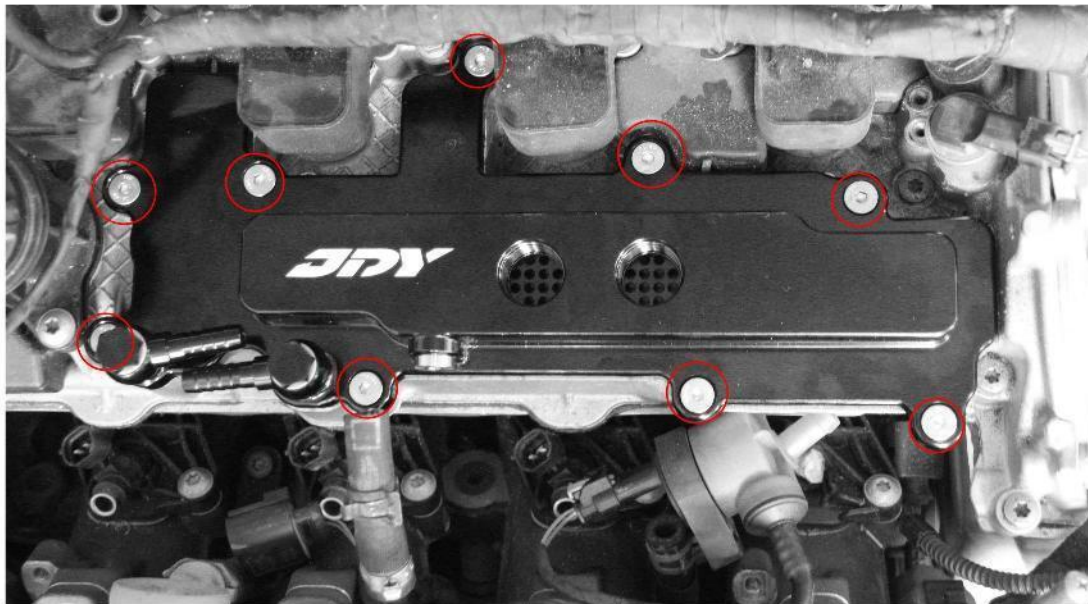
6.Remove the sealing washer on the OEM PCV Valve



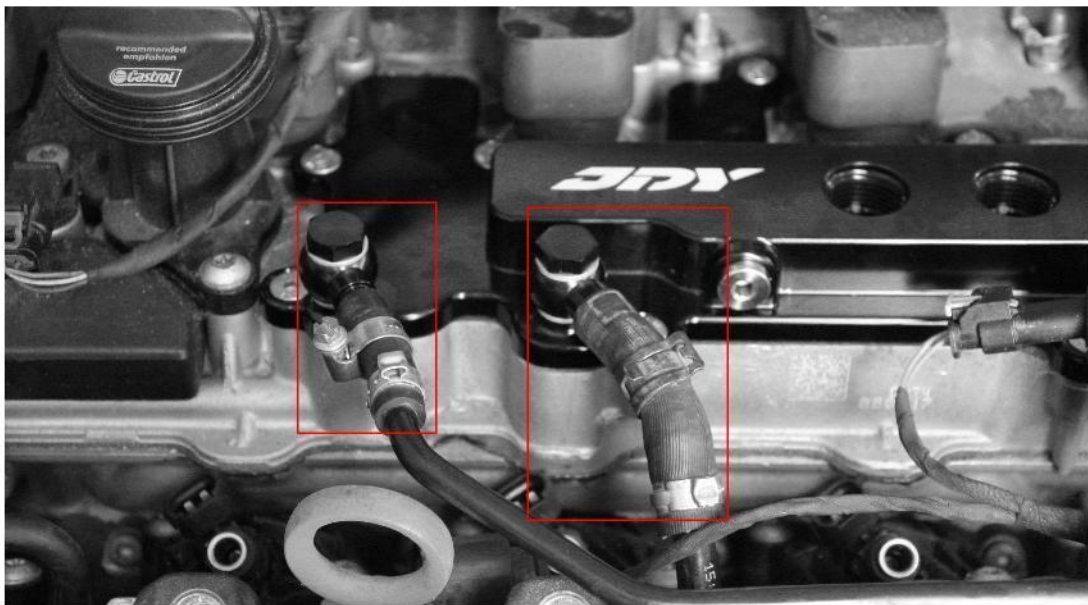
7.Install the OEM sealing washer onto the JDY PCV Valve



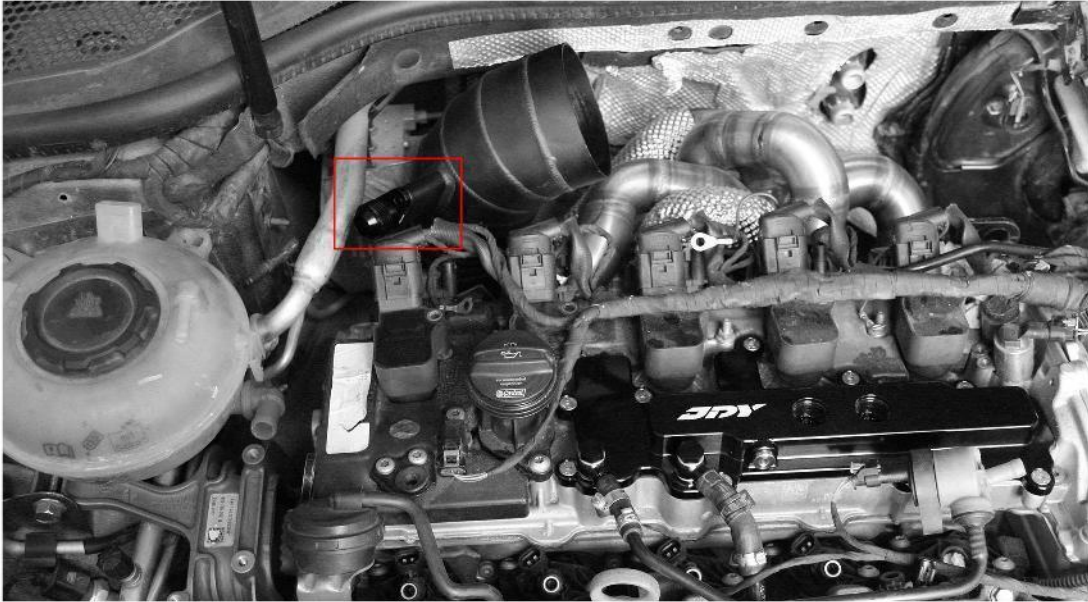
8. Fasten the JDY PCV Valve on with Bolts supplied from JDY



9. Connect the two vacuum pipes to the JDY PCV Valve



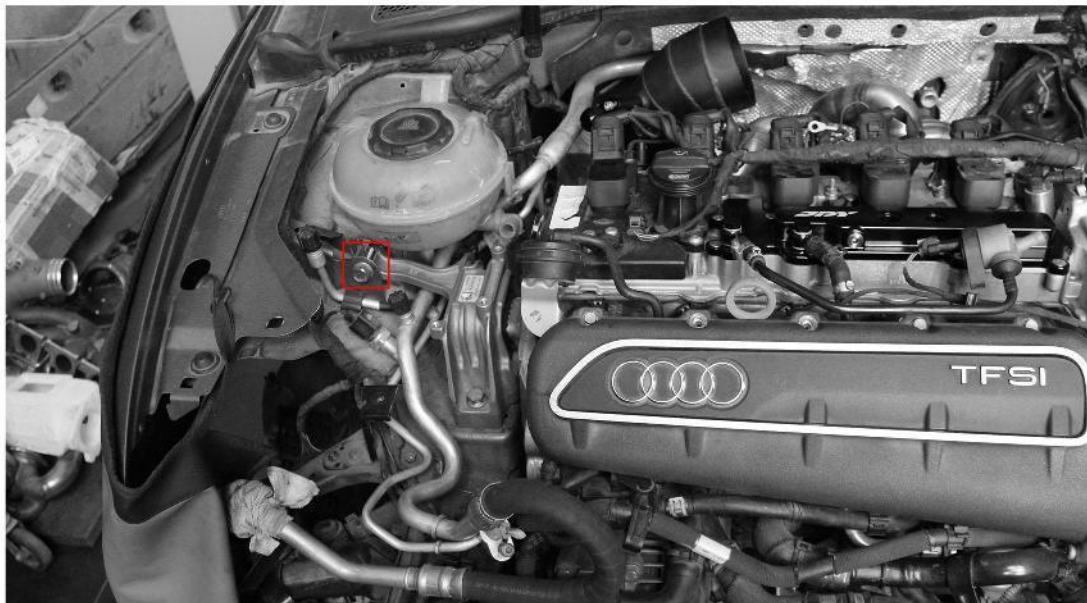
10. Install the JDY EGR(Exhaust Gas Recirculation) pipe fitting to intake pipe



11. Fasten the bolt supplied from JDY onto the fitting with H5 socket



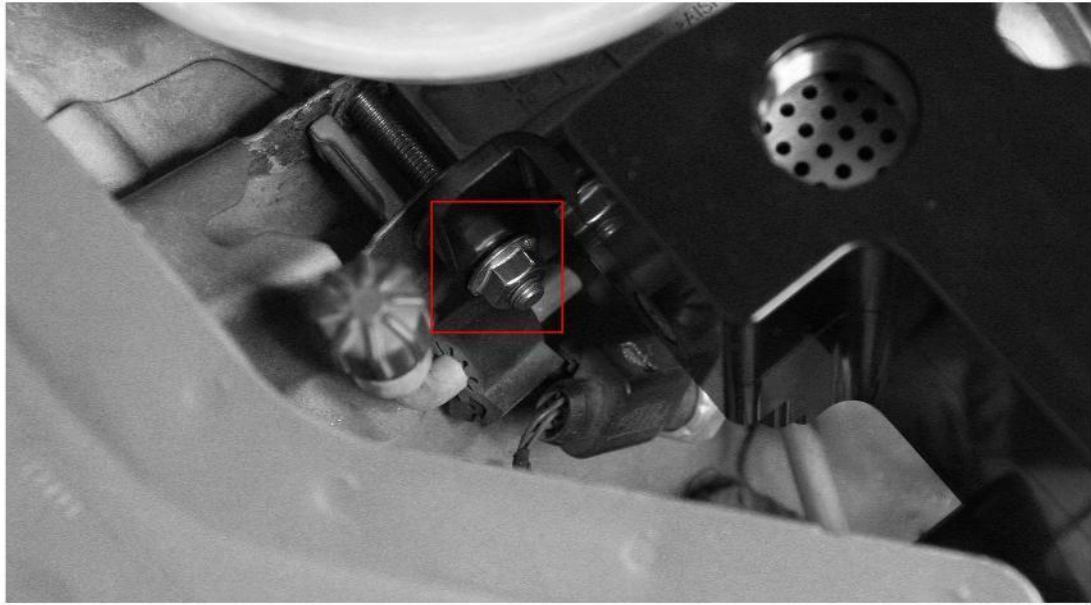
12. Remove the bolt on the engine mount with 13mm socket



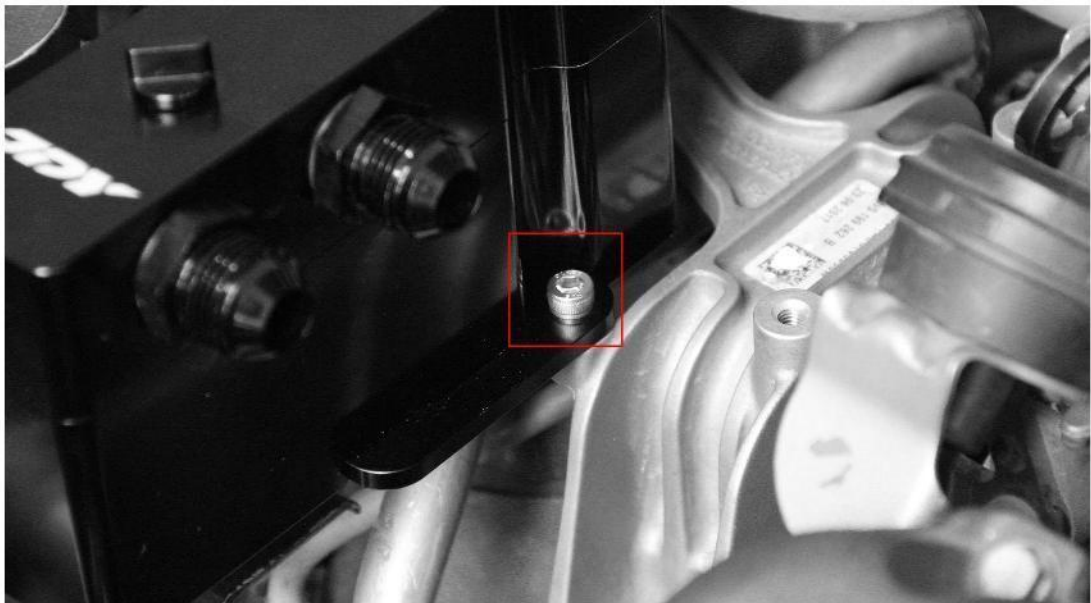
13. Fasten the bolt supplied from JDY on the engine mount with 16mm socket



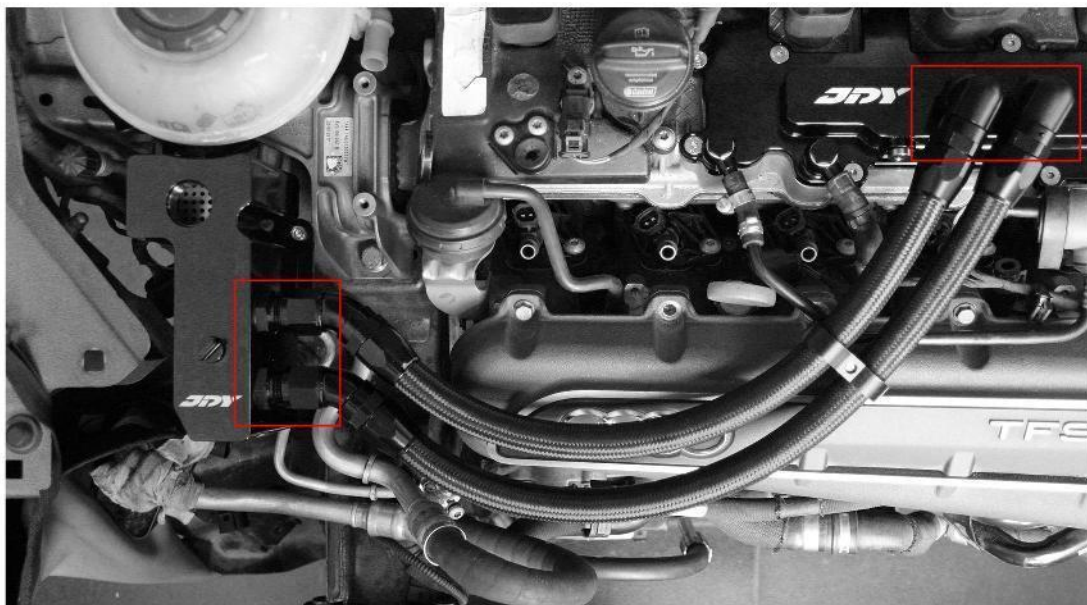
14. Fasten the screw nut supplied from JDY on the JDY Oil Catch Can with 13mm socket



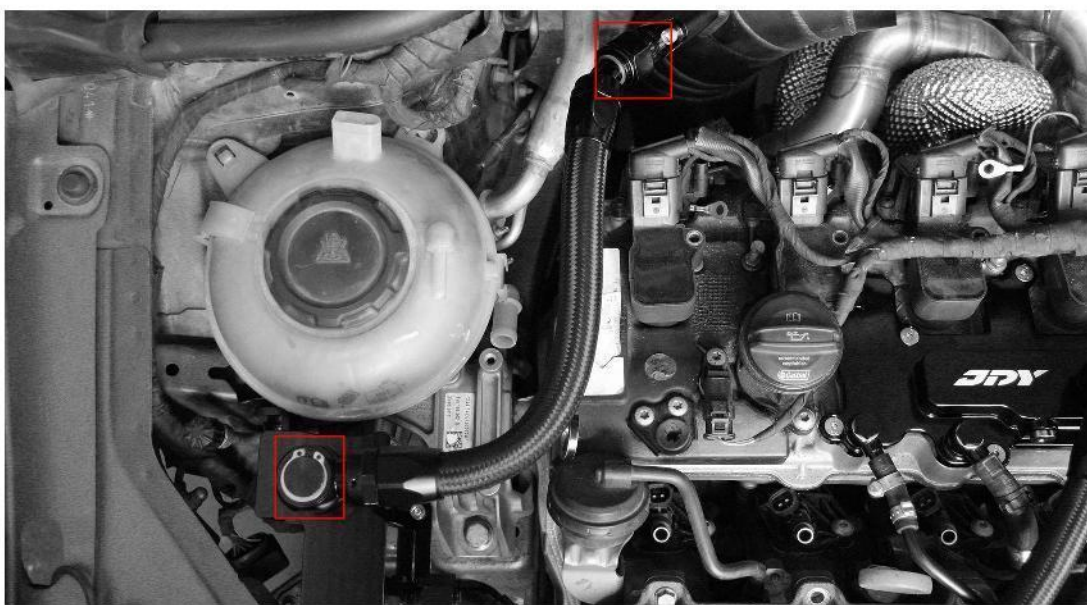
15. Fasten the bolt supplied from JDY on the JDY Oil Catch Can with H5 socket



16. Connect the two AN10 EGR(Exhaust Gas Recirculation) hoses from JDY PCV Valve to JDY Oil Catch Can



17. Connect the AN12 EGR(Exhaust Gas Recirculation) hose between the fitting on intake pipe and JDY Oil Catch Can



18. The process has come to an end



**THANK YOU VERY MUCH FOR PURCHASING
JDY PERFORMANCE PRODUCTS!**

If any further assistance is needed please contact :

tech@jdyperformance.com

sales@jdyperformance.com

or you can always contact us through our facebook & instagram official page



WWW.JDYPERFORMANCE.COM