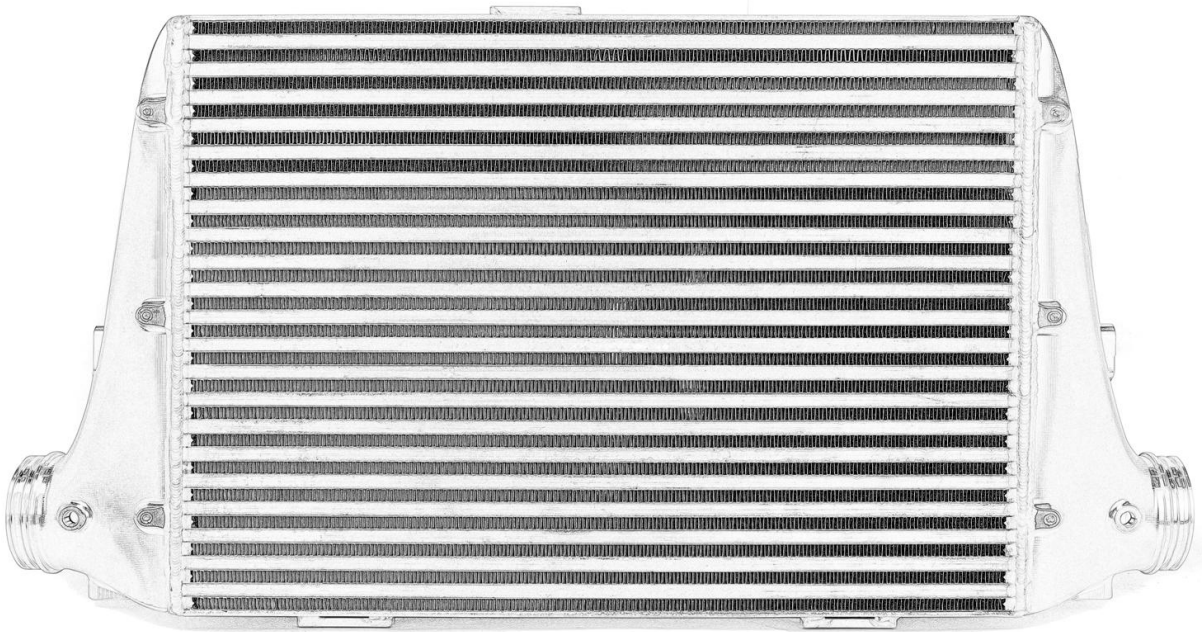




JDY FRONT MOUNT INTERCOOLER(FMIC)

AUDI 2.5TFSI RS3TTRS-1300HP

Instruction Manual



Notes:

When disassembling the car, be sure to keep all fasteners so they can be reused. It is recommended that you get some kind of compartmented tray to organize the fasteners, such as a fishing tackle box or several large ice cube trays. All directions used in this manual (right, left, front, etc.) are based on if you were sitting in the driver seat of the car.

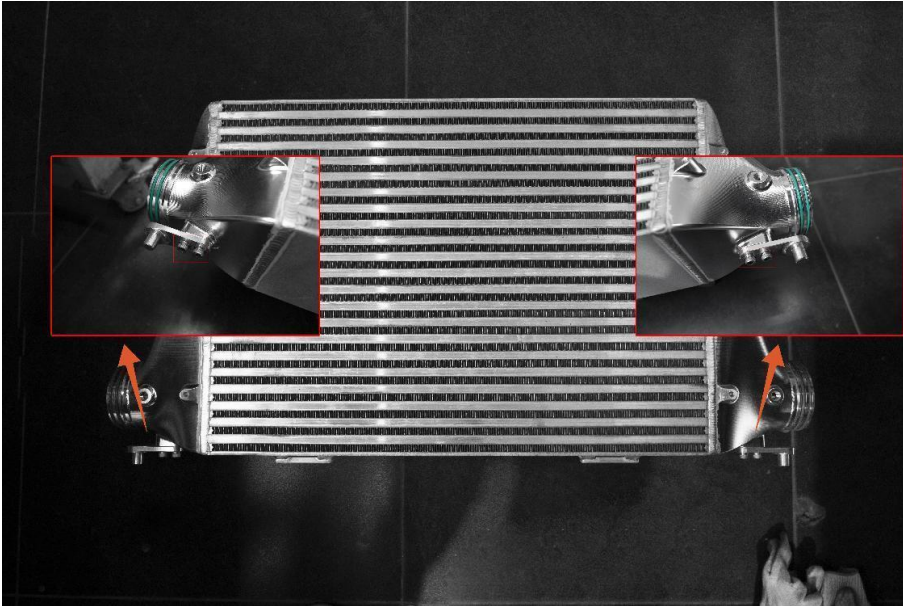
These instructions assume that you have basic mechanical skills and several varieties of basic hand tools in order to install the kit. If you have any questions about the installation, feel free to contact our JDY representative.

ATTENTION!!!

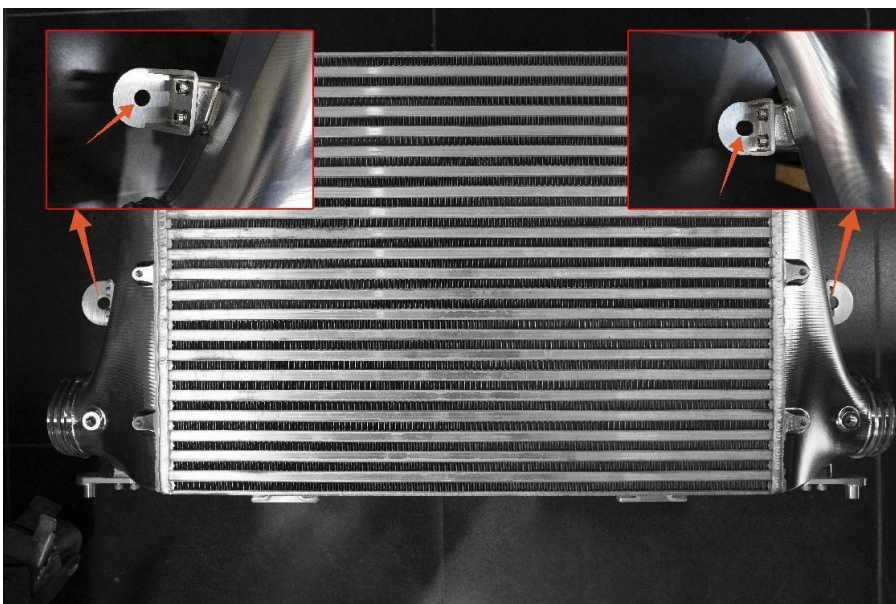
Dust/ packaging material/ powder may get inside the end -tank during transportation.

Before installation, please use an air pump to blow the intercooler end tank on each side to eliminate possible foreign object.

1. Install the lower intercooler bracket by fastening the JDY bolts with H5 socket



2. Install the upper intercooler bracket by fastening the JDY bolts with H5 socket



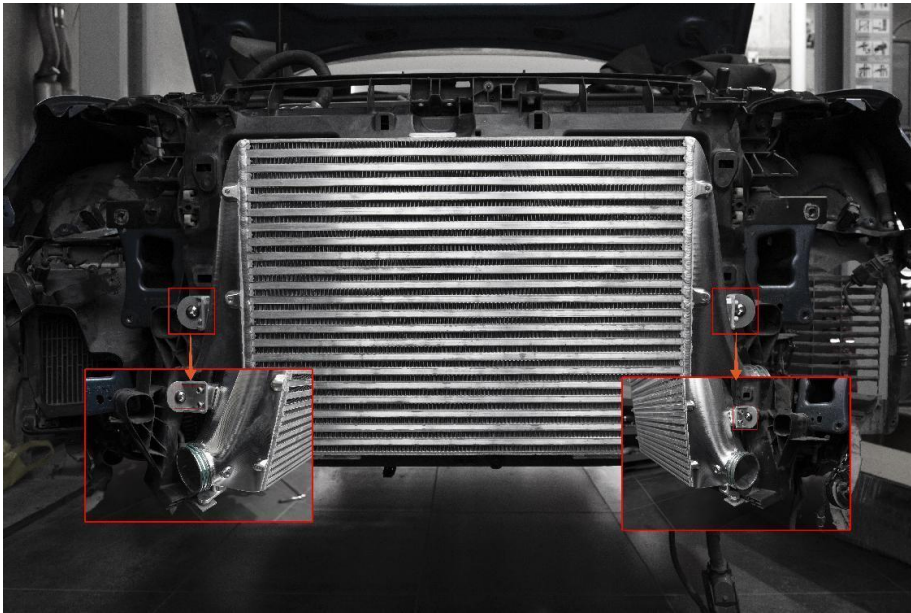
3. Install the shock absorber rubber block provided by JDY to the upper bracket



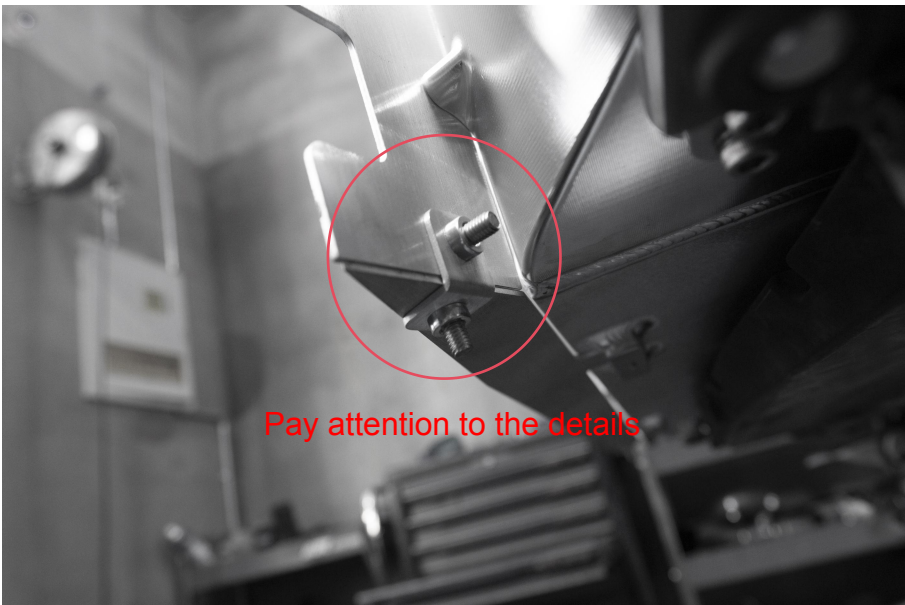
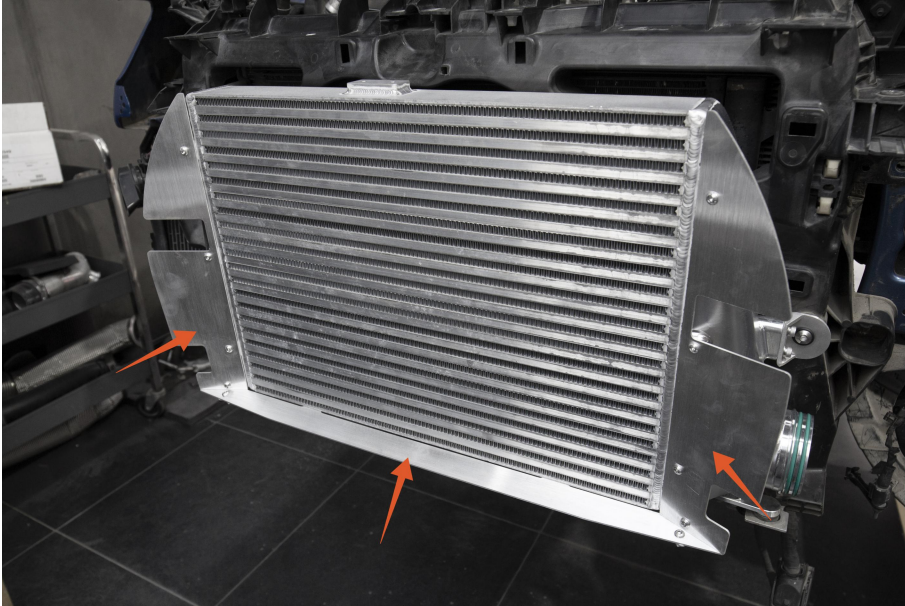
4: Install the JDY metal liner to the rubber block



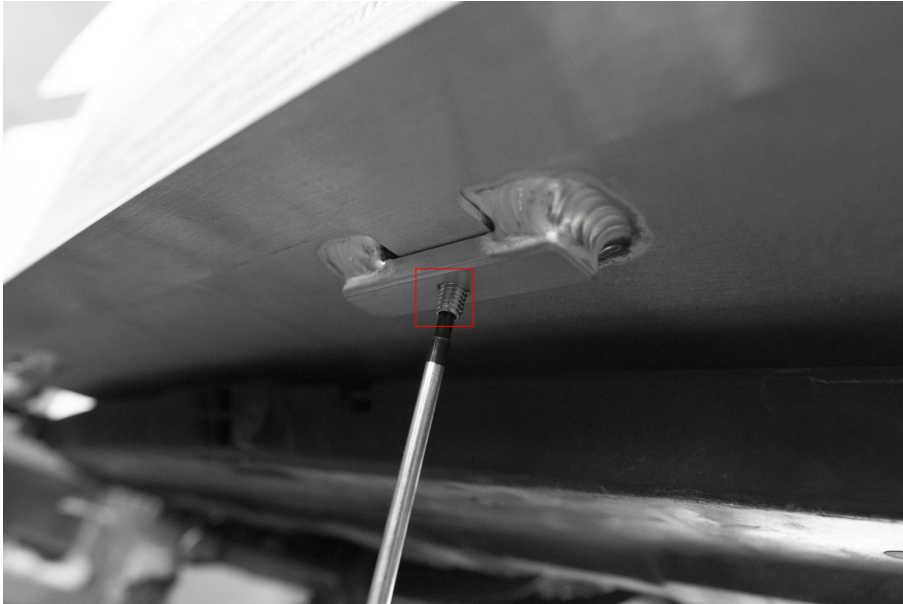
5 Install the JDY intercooler on the radiator support frame by fastening the bolts provided by JDY with H5 socket



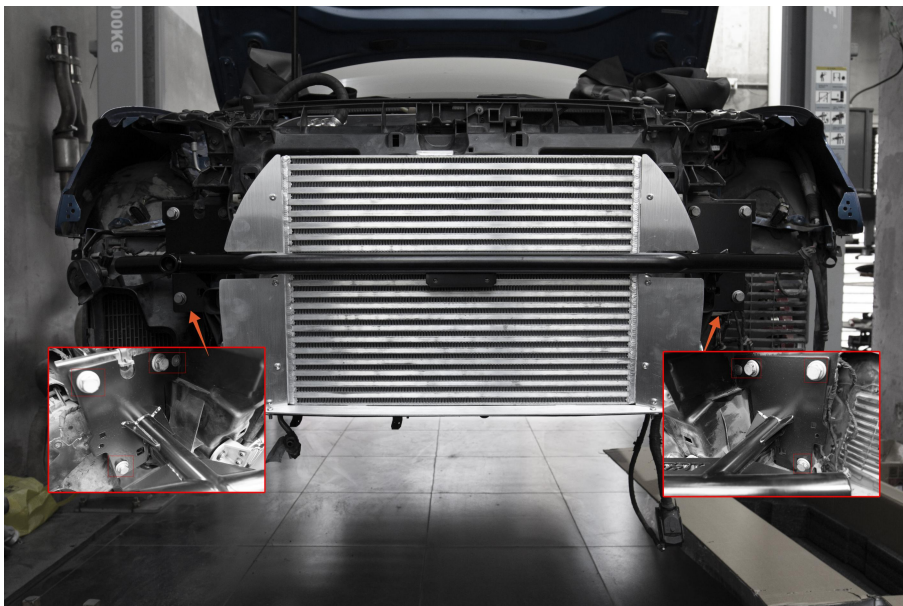
6. Install the air guide by fastening the JDY bolts with H4 socket



7. Fasten JDY bolts onto air guide with H3 socket



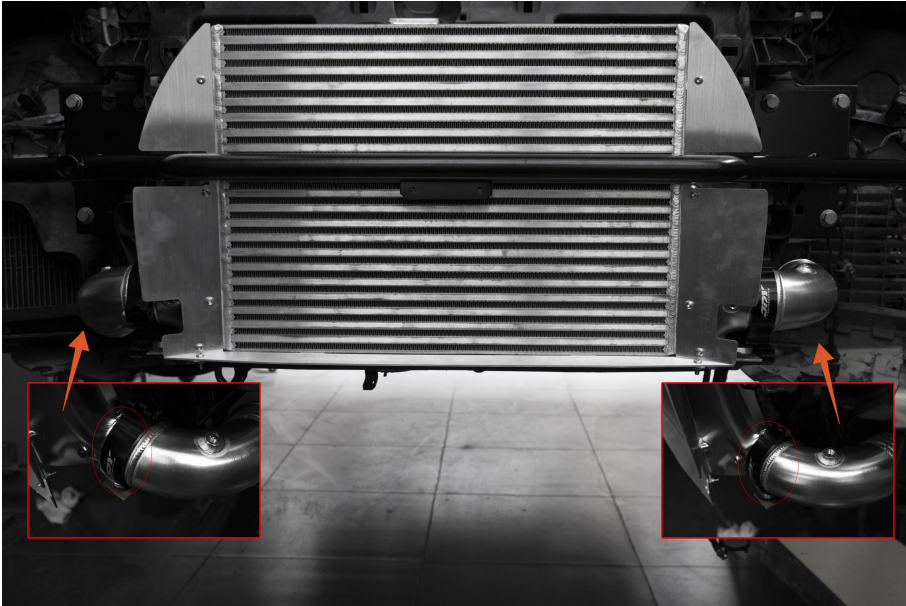
8. Fasten the OEM bolts onto the crash bar with 16mm and T30 sockets



9. Fasten the OEM bolts onto car horn with T30 socket



10. Clamp both the intercooler inlet and outlet by fastening the clamp bolts with H5 socket

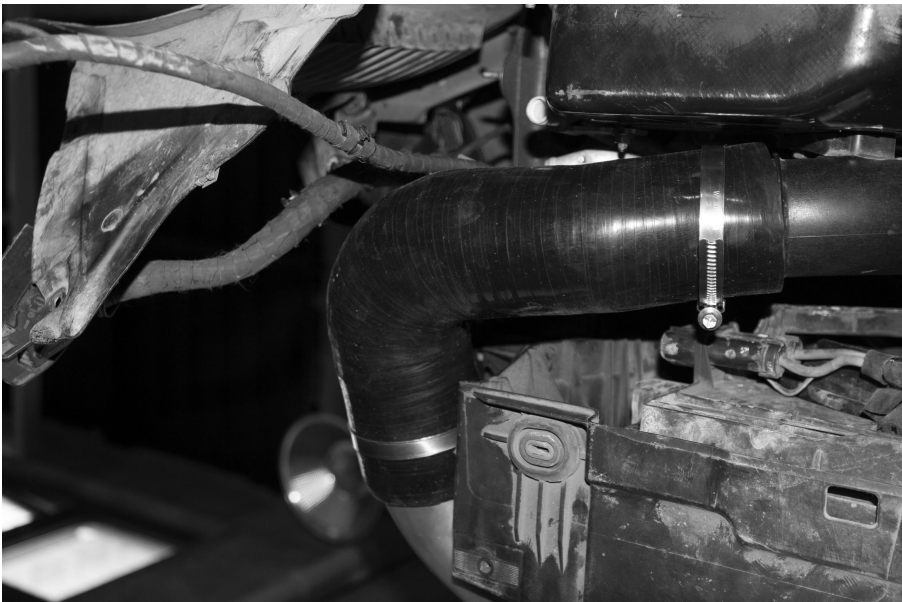
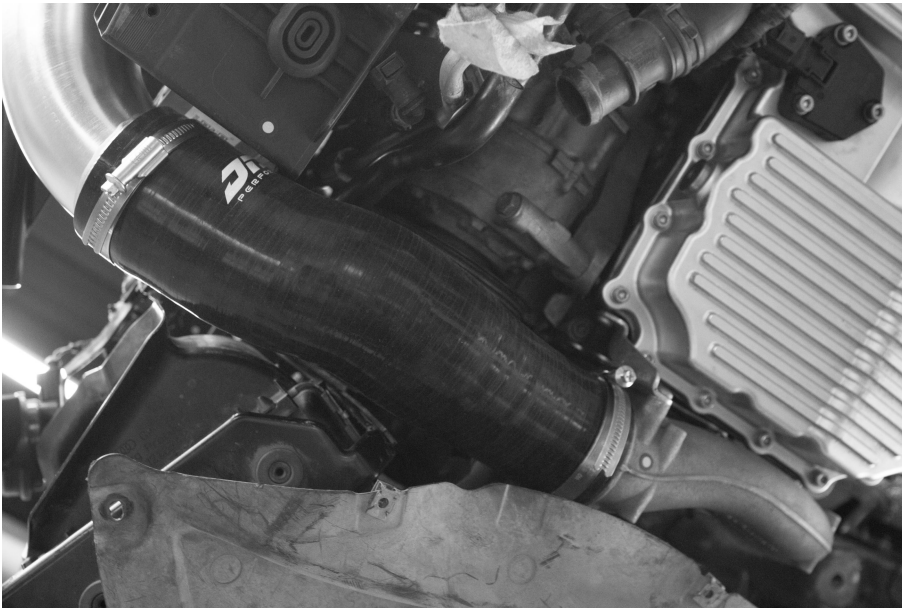


11. Install the JDY blocks with H5 socket



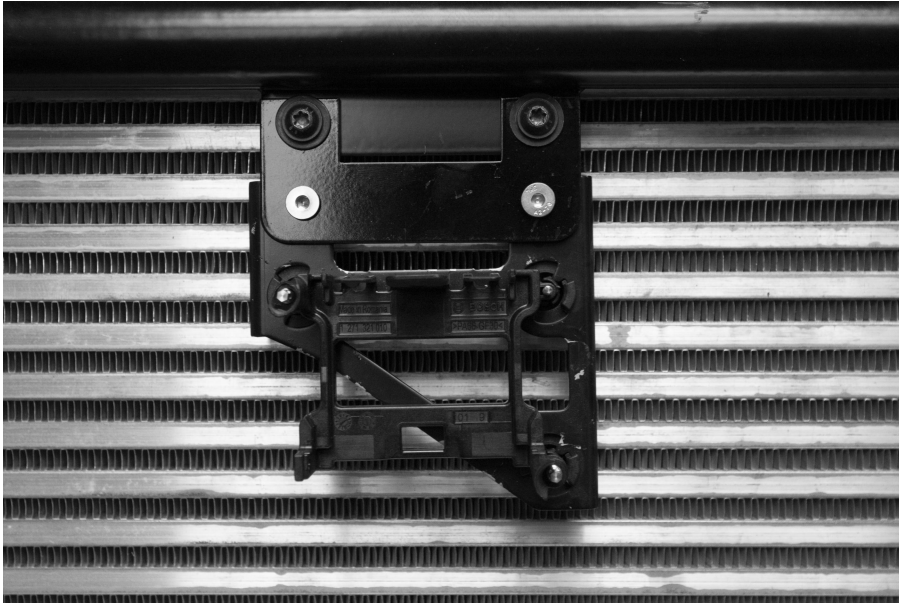
12. Install the clamp to secure the JDY silicone charge pipe with 7mm socket

JDY provides 4 types of charge pipes, please adapt according to the pipe diameter

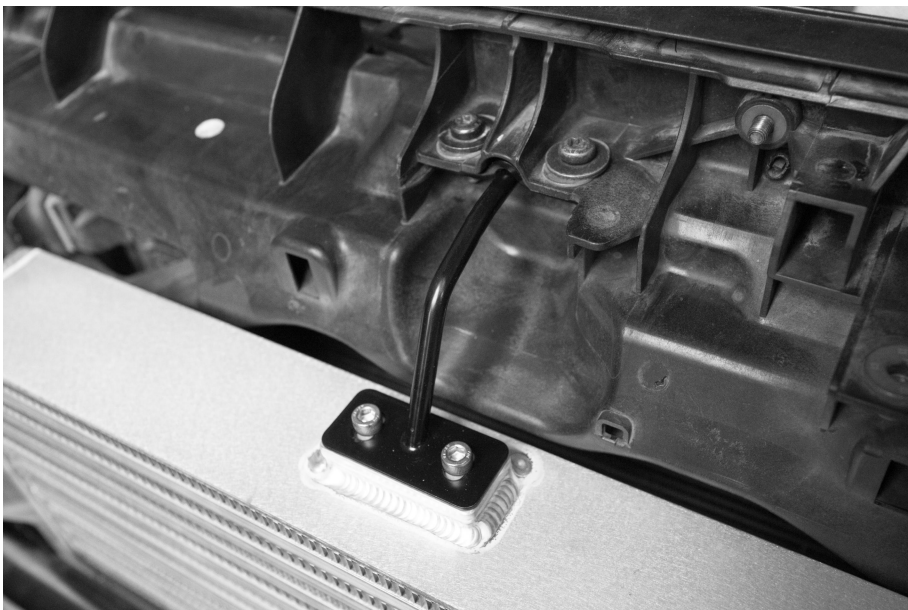


13: Fasten the OEM bolts onto ACC bracket with T30 socket.

ATTENTION: please do not unplug the ACC sensor electronically when removing from stock location, keep it electronically plugged AT ALL TIME!



14: Install the JDY hook lock with T30 and H5 sockets



**THANK YOU VERY MUCH FOR PURCHASING
JDY PERFORMANCE PRODUCTS!**

If any further assistance is needed please contact :

tech@jdyperformance.com

sales@jdyperformance.com

or you can always contact us through our facebook & instagram official page

WWW.JDYPERFORMANCE.COM