

C.C.Rider Seat

Installation Instruction

Part Number: S12

WARNING

Rider and passenger safety depend upon the correct installation of this kit. Improper installation of this kit could result in death or serious injury.

Do not install these seat kits on motorcycles that are not equipped with an appropriate grab strap and passenger footpegs. If footpegs and grab straps are not installed, passengers could fall from moving the motorcycle or grab onto the operator, causing loss of control and death or serious injury.

NOTE

When performing the following installation procedures, avoid scratching painted surfaces (fender, tank, etc.) with tools or metal seat tabs.

INSTALLATION

1. Carefully remove the protective tape from the rear fender.
3. Remove and discard existing grab strap.
4. See Figure 1. Remove and discard studded seat bracket, if equipped.
 - a. Remove nylon retaining washers from bracket studs.
 - b. Remove the studded bracket from the fender.
5. Install retention nut and retention washer in the appropriate fender holes.
6. See Figure 2.
 - a. Mark the bottom of isolators (5) that contact the fender with chalk.
 - b. Set the seat in place with front and rear mounting locations on the seat aligned with the mounting locations on the motorcycle.
 - c. Press down on the seat to transfer the marks from the isolators to the fender.
7. See Figure 2. Slide the back of the seat and hook the front tab of seat (12) into the frame (11).
8. Secure seat bracket to fender with a screw. Tighten.
9. Pull up on the seat to check that it is secure.

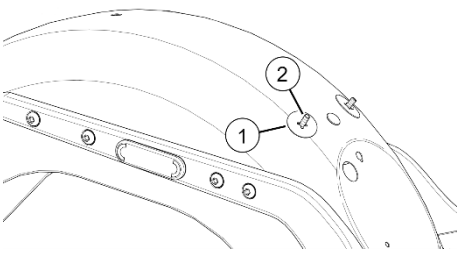


Figure 1 Studded Seat Bracket

1	Nylon retaining washer
2	Bracket stud

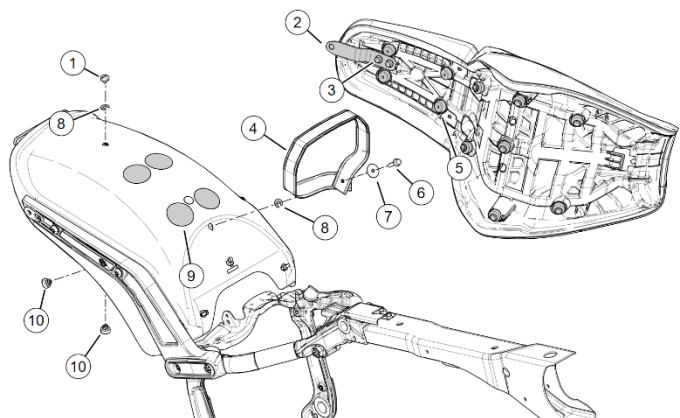


Figure 2 Service Parts Softtail Seat Kits