

C.C.Rider Seat

Installation Instruction

Part Number: S06

WARNING

Rider and passenger safety depend upon the correct installation of this kit. Improper installation of this kit could result in death or serious injury.

NOTE

When performing the following installation procedures, avoid scratching painted surfaces (fender, tank, etc.) with tools or metal seat tabs.

This seat is for solo use only. Do not attempt to carry a passenger with this custom solo seat installed.

INSTALLATION

1. Remove seat and seat studs, if equipped.
2. Remove rear fender protective tape, if equipped.
3. Mark the bottom of isolators (3) that contact the fender with chalk.
4. Set the seat in place with front and rear mounting locations on the seat aligned with the mounting locations on the motorcycle.
5. Press down on the seat to transfer the marks from the isolators to the fender.
6. Install Seat.
 - a. Refer to Figure 1. and Figure 2. Engage seat tongue (B) in seat mounting bracket (A).
 - b. Align seat grommet (2) on seat post (5) and push down on seat until you hear a click.
4. After installing the seat, pull up on the seat to verify it is secure.
5. Models equipped with passenger footpegs, remove footpegs.

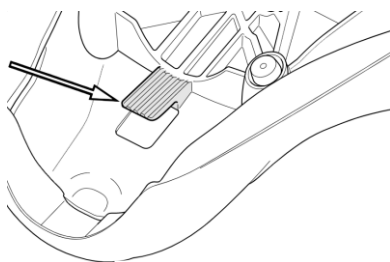


Figure 1.

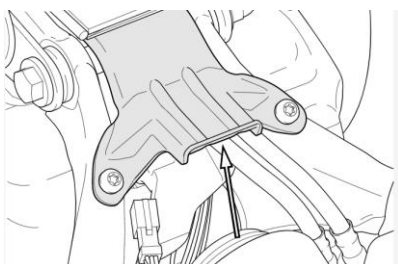


Figure 2.

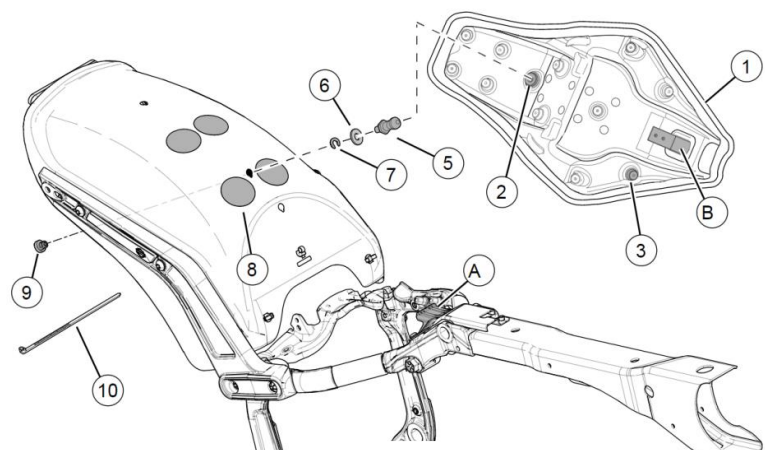


Figure 3.