

C.C.Rider Seat

Installation Instruction

Part Number: S04

WARNING

Rider and passenger safety depend upon the correct installation of this kit. Improper installation of this kit could result in death or serious injury.

NOTE

When a solo seat is installed without a passenger seat, the passenger footpegs or footboards and the passenger grab strap must be removed.

When removing or installing the seat, do not scratch painted surfaces (fender, tank, and so on) with a metal tab on the seat.

INSTALLATION

1. Remove original equipment (OE) seat.
2. See Figure 1. Remove the six screws from under seat location.
3. See Figure 1 and Figure 2. Install front mounting bracket. Secure with screws to the front of bracket and screws to the rear of the bracket. Tighten.
4. Install right and left mounting perch. Secure with screws. Tighten.
6. Rigid Kit:
 - a. Assemble rigid mount post to seat pan. Tighten.
 - b. Mount seat pan to clevis bracket using two screws. Tighten.
 - c. Align rear of seat pan over right and left mounting perch.
 - d. Assemble screw to clevis bracket. Tighten.
7. After installing the seat, pull up on the front of the seat to verify that it is secure.

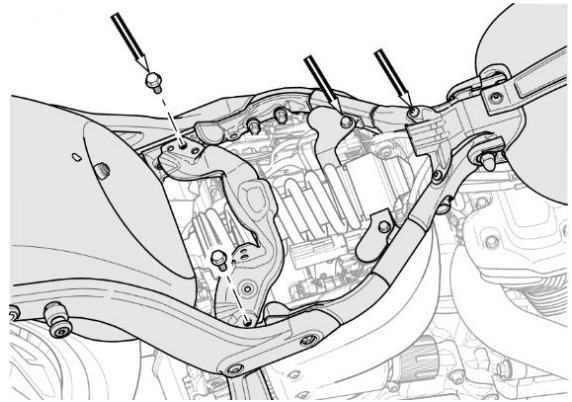


Figure 1. Bolt Removal

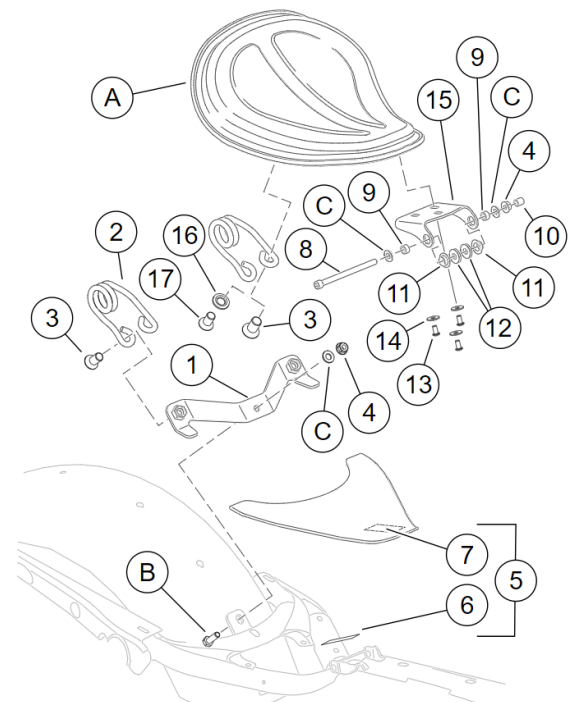


Figure 2. Service Parts Seat Kits