

C.C.Rider Seat

Installation Instruction

Part Number: FS04

WARNING

Rider and passenger safety depend upon the correct installation of this kit. Improper installation of this kit could result in death or serious injury.

INSTALLATION

1. See Figure 1. If driver seat has valanced flaps, lift up flaps and remove side covers to access and remove seat mounting bolts (A).
2. Lift up seat and slide toward rear of bike.
3. Carefully set seat, bottom side up, on a towel or cloth on workbench to prevent damage to the driver seat.
4. Align four mounting holes of passenger seat mounting brackets over four mounting holes on driver seat.
5. See Figure 2. Install four screws (5) to attach passenger seat (1) to driver seat (B). Tighten.
6. Place seat assembly onto the motorcycle approximately 1.5 inches (38 mm) to rear of mounted position. Ensure front slots are aligned to tabs on front of fender.
7. Tip seat forward and slide seat on until it catches. Hold passenger seat up to ensure it does not scratch frame.
8. See Figure 3. Place plastic washer (4) on fender and lower passenger seat mounting bracket (C) onto it. Install button head screw (2) and flat washer (3). Tighten.
4. Re-install driver seat mounting bolts (A) and Tighten.

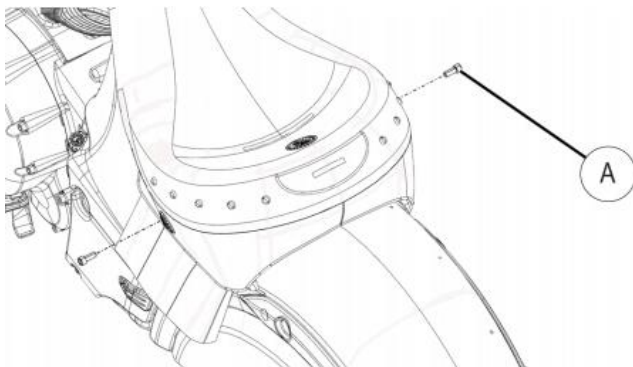


Figure 1.

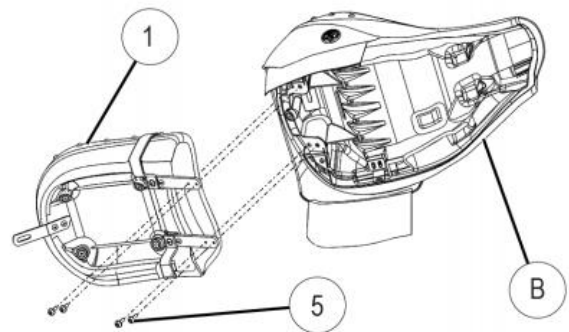


Figure 2.

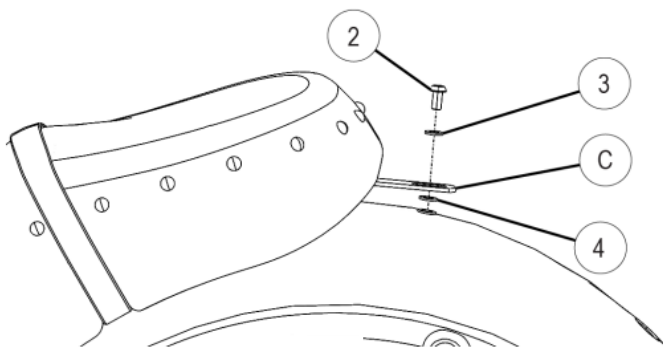


Figure 3.