



Item No. \_\_\_\_\_

# 220

## Batch Ice Cream Freezer



### Features

Serve homemade, high overrun ice cream, gelato, sorbet or Italian ice. Fruits, candies and nuts can be added through the convenient fill chute on the door.

### Freezing Cylinder

One, 20 quart (18.9 liter).

### Mix Hopper

One, 10 quart (9.5 liter). Mix flows into the freezing cylinder through an opening in the hopper mounted funnel. With the funnel closed, more mix can be added to the hopper in preparation for the next batch.

### Automatic Temperature Control

Refrigeration system shuts off when set temperature is reached. A buzzer will sound to remind the operator to eject the finished product into tubs or other containers.

### Adjustable Shelf

Three positions for filling large to small containers.



Standard 6



LISTED  
SA2650



Selected 50  
Hz. Models

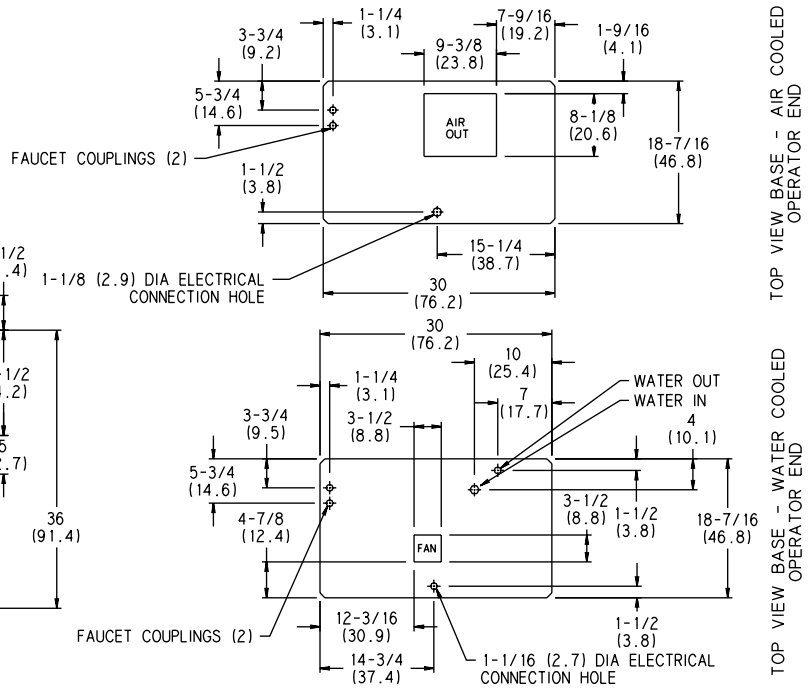
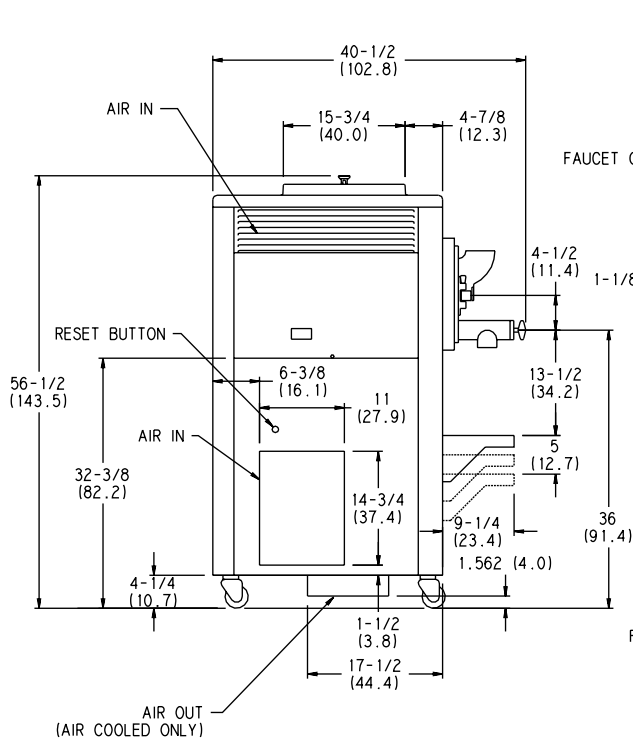
Rockton, Illinois 61072  
800-255-0626  
Phone 815-624-8333 Fax 815-624-8000  
[www.taylor-company.com](http://www.taylor-company.com)  
e-mail: [info@taylor-company.com](mailto:info@taylor-company.com)

International Office  
Taylor Company S.r.l.  
Roma, Italy  
Tel: +39-06-420-12002 Fax: +39-06-420-12034  
e-mail: [romeoff@taylor-company.com](mailto:romeoff@taylor-company.com)



Taylor Company

# 220 Batch Ice Cream Freezer



(FIGURES IN PARENTHESES INDICATE CENTIMETERS)

Weights	lbs.	kgs.
Net	500	226.8
Crated	590	267.6
Volume	cu. ft.	cu. m.
Volume	54.8	1.5

Dimensions	in.	mm.
Width	18-7/16	468
Depth	40-1/2	1029
Height	56-1/2	1435
Floor Clearance	4-1/4	108

\*Mounted on standard casters

Electrical	Maximum Fuse Size	Minimum Circuit Ampacity	Poles (P) Wires (W)
208-230/60/1 Air	40	30	2P 3W
208-230/60/1 Water	40	27	2P 3W
208-230/60/3 Air	30	22	3P 4W
208-230/60/3 Water	30	19	3P 4W
220-240/50/1 Air	30	25	2P 3W
220-240/380-415/50/3 Air	12	11	4P 5W

This unit may be manufactured in other electrical and cooling characteristics. Refer to the local Taylor Distributor for availability. (For exact electrical information, always refer to the data label of the unit.)

## Bidding Specs

Electrical: Volt \_\_\_\_\_ Hz \_\_\_\_\_ ph \_\_\_\_\_  
 Neutral:  Yes  No **Cooling:**  Air  Water  NA

Options: \_\_\_\_\_

## Specifications

### Electrical

One dedicated electrical connection is required. See the Electrical chart for the proper electrical requirements. Manufactured to be permanently connected. Consult your local Taylor distributor for cord & receptacle specifications as local codes allow.

### Beater Motor

One, 1.5 HP.

### Refrigeration System

One, approximately 15,000 BTU/hr. R404A. (BTUs may vary depending on compressor used.)

### Air Cooled

Minimum clearance: 3" (76 mm) around all sides. Install the deflector provided to prevent recirculation of warm air. Minimum air clearances must be met to assure adequate air flow for optimum performance.

### Water Cooled

Water inlet and drain connections under side of base 3/8" FPT.

Continuing research results in steady improvements; therefore, these specifications are subject to change without notice.

