



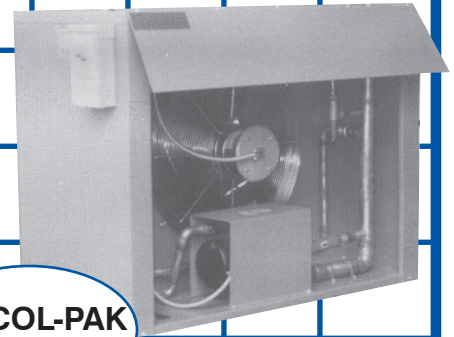
Are your Profits going down the drain?



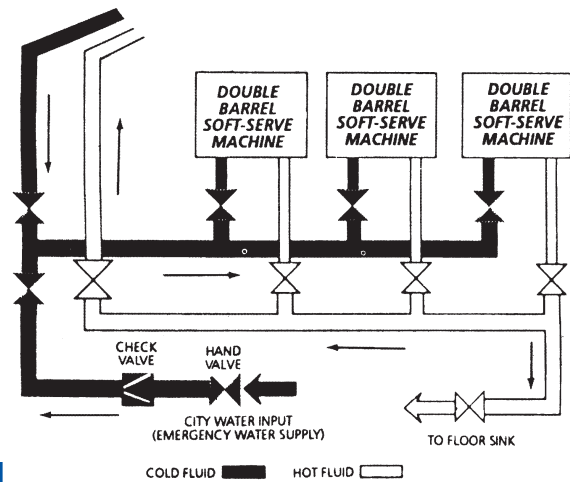
DON'T ALLOW YOUR WATER AND SEWER BILLS TO SUCK UP YOUR PROFITS... ALLOW AIRDYNE'S GLYCOL-PAK FLUID COOLING TECHNOLOGY TO SAVE YOU UP TO SEVERAL \$100'S PER MONTH.

Go with Airdyne GLYCOL-PAK Fluid-Cooling Systems that cost Less to Buy, to Install yet Save about \$150/Machine/Mo.

- Sealed in closed loop propylene-glycol water cooling remote systems for Soft-Serve machines that are sure to dramatically lower cost while increasing efficiency.
- Ruggedly constructed Glycol-Paks are completely assembled at the factory including fluid manifolds and piping/wiring.
- Typical total return on Investment in under One Year.
- Choice of 13 standard models (for 2 to 26 barrel usage).
- Proven track record - thousands are in use, internationally.



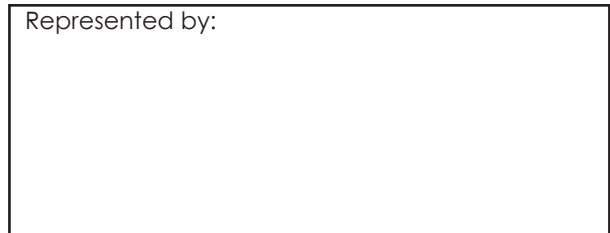
GLYCOL-PAK
model GP-3 shown



AIRDYNE

162 E Orangethorpe Ave. Placentia, CA 92870
Phone (714) 993-3700 • (800) 487-3710
Facsimile (714) 993-2911
www.airdyne.com

Represented by:



GLYCOL-PAK FLUID COOLING SYSTEMS FOR SOFT SERVE, BATCH FREEZER AND WATER COOLED MACHINES

System Design

The AIRDYNE GLYCOL-PAK: fluid cooler is a heat exchanger designed to operate with water cooled dispensing equipment. The hot glycol from the water cooled condenser is piped to the GLYCOL-PAK fluid cooler, whereby heat is removed from the fluid and rejected into the outside air. The cooled glycol is re-circulated as required by the water cooled equipment. The system is controlled by a thermostat to shut the fans off at a predetermined temperature on GP-4s and up. Fluid cooler is completely piped and pre-wired for low cost installation in the field.

Benefits of Glycol-Pak

The closed-loop glycol fluid cooling system's benefits are twofold. The shop's air conditioning load is reduced as the compressor heat is not rejected into the conditioned space.

The additional benefit is the dramatic savings in the water usage thus reducing the water and sewer bills. The cooled glycol is re-circulated in a closed loop circuit and never comes into contact with the outside air. There is no need for adding makeup water or the expensive maintenance and chemicals typical of open type cooling systems.

Glycol-Pak Capabilities

Airdyne Model No.	No. of Soft Serve Barrels	Heat of Rejection (BTU)	Total Fluid Volume (Gal)**	Fluid Flow (GPM)	Connection Hot Fluid Inlet	(OD) Cold Fluid Outlet	L	W	H	Total System Amps	Shipping Weight (lbs)
GP-1	2	30,000	4	4	7/8"	7/8"	30	22	36	5.7	300
GP-2	4	55,000	6	8	1 1/8"	1 1/8"	50	22	36	7.5	400
GP-3	6	81,000	8	10	1 1/8"	1 1/8"	50	22	36	9.1	500
GP-4	8	108,000	10	13	1 3/8"	1 3/8"	70	22	36	12.7	600
GP-5	10	135,000	12	16	1 5/8"	1 5/8"	90	22	36	14.5	785
GP-6	12	165,000	14	20	1 5/8"	1 5/8"	110	22	36	18.2	900
GP-7	14	190,000	15	22	1 5/8"	1 5/8"	70	60	36	22.2	1200
GP-8	16	225,000	16	25	1 5/8"	1 5/8"	70	60	36	22.2	1225
GP-9	18	260,000	18	29	1 5/8"	1 5/8"	90	60	36	22.2	1250
GP-10	20	290,000	22	32	2 1/8"	2 1/8"	90	60	36	27.5	1400
GP-11	22	330,000	26	37	2 1/8"	2 1/8"	110	60	36	27.5	1400
GP-12	24	362,000	28	40	2 1/8"	2 1/8"	110	60	36	27.5	1800
GP-13	26	408,000	30	44	2 1/8"	2 1/8"	130	68	54	27.5	1800

NOTES: *Heat rejection is calculated at ambient temperature of 120° degrees Fahrenheit. ** (208 Volts, Single Phase, 60 Hertz)

Features of the Glycol-Pak

The system accommodates up to 26 barrels. Customer has a Choice of 13 standard models available from 2 to 26 barrel soft-serve freezers for frozen yogurt/ice cream as well as other water cooled equipment.

Each system is equipped with a durable galvanized cabinet, staggered copper tube coils with aluminum fins, centrifugal pump, fan motor assembly, fill port, pump bypass with adjustable pressure relief valve, automatic air venting valve, fan cycle thermostat; for GP-4 & up, main fuse disconnect and fluid manifolds.

