

▽ ICE CREAM CONE DISPENSERS & HOLDERS

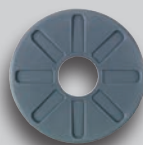
| Model Number | Item Description | Dimensions H x W x D |
|--------------|---|----------------------|
| GFCD-1 | Surface Mounted Gravity Fed Cone Dispenser for Cones 1½"–2¼" | 31" x 3½" |
| GFCD-1-BFL | Replacement Baffle for use with GFCD-1 | 3½" x 5⁄8" |
| GFCD-2 | Surface Mounted Gravity Fed Cone Dispenser for Cones 2¾"–3⁵⁄₁₆" | 31" x 4¼" |
| GFCD-2-BFL | Replacement Baffle for use with GFCD-2 | 4¼" x 5⁄8" |



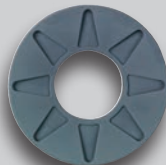
GFCD-1



GFCD-2



GFCD-1-BFL



GFCD-2-BFL

Replacement baffles are available for both GFCD Series Cone Dispensers.



CSG-5L



CTCS-4C



CTCS-6C



CTCS-9C



TD-4

| Model Number | Item Description | Dimensions H x W x D |
|--------------|--|----------------------|
| CSG-5L | Acrylic Cone Stand with Guard – (5) 2" Holes | 16" x 19" x 5½" |
| CTCS-4C | Acrylic Cone Stand (4) 1½" Holes | 5" x 8" x 6¼" |
| CTCS-6C | Acrylic Cone Stand (6) 1½" Holes | 5" x 9¾" x 6¼" |
| CTCS-9C | Acrylic Cone Stand (9) 1½" Holes | 5" x 9¾" x 9¼" |
| TD-4 | Acrylic 4 Section Topping Dispenser | 5½" x 13½" x 8" |

CLEAR PLASTIC CONSTRUCTION