

**STATE LAW REQUIRES THAT THE ELECTRIC POWER TO THIS
MACHINE BE INSTALLED BY A LICENSED ELECTRICIAN –
ONLY**

FAILURE TO ADHERE TO THIS WILL VOID YOUR WARRANTY

/// CAUTION ///

CB-350 COUNTERTOP BATCH FREEZER



/// WARNING ///

**YOUR COMPRESSOR WILL IMMEDIATELY START WHEN THE ELECTRIC IS
HOOKED UP.**

- 1. SECURE ALL PANELS TO THE MACHINE BEFORE TURNING ON THE ELECTRIC.**
- 2. THE OCCASIONAL CYCLING OF THE COMPRESSOR ON AND OFF IS NORMAL AND IS DESIGNED TO EXTEND THE LIFE OF YOUR CONDENSING UNIT.**

EMERY THOMPSON

BATCH FREEZER INSTALLATION

OPERATING, MAINTENANCE
AND CLEANING MANUAL

MODEL CB350 COUNTERTOP





EMERY THOMPSON
Machine and Supply Co.
15350 Flight Path Drive, Brooksville, FL 34604
718-588-7300 etfreezers@gmail.com

YOUR FROZEN DESSERTS
(FREEZING UP YOUR MACHINE)
What you did wrong!

When our customers first run their new Emery Thompson CB-200 or CB-350, what we too often hear is how they froze the machine up solid and got an error code on the CB-350 or the machine just stopped spinning on the CB-200.

Here is a list of what went wrong:

1. They did not read the instruction manual. Unlike a cell phone (that does not come with an instruction manual), your \$10,000.00 investment comes with a very comprehensive manual. Your new batch freezer is not “Intuitive.” You must read and understand the entire instruction manual – and especially read the warnings! It’s a lot of money to spend and not operate it properly.
2. If the scraper blades (the two long pieces of Delrin plastic) are not installed properly, the machine will start making noise in a few minutes and either freeze up or take three times as long to make a batch. The curved tip of the blade goes to the back of the machine and the other tip of the blade which is cut off on a 90 degree angle goes to the front of the machine. We have added a "dimple" to the very front of each blade.

~ 1 ~
v. 3.04

Emery Thompson CB-350 Countertop Batch Freezer



EMERY THOMPSON

Machine and Supply Co.

15350 Flight Path Drive, Brooksville, FL 34604

718-588-7300 etfreezers@gmail.com



After the dasher is in place, you should be able to see the "dimple" on each of the two blades BEFORE you put the front door in place (see photo). If this is wrong the machine will not operate properly. You need to be aware of this Each and Every time you assemble the machine.

3. You cannot do "test" half batches. You must have three and a half to four quarts of product in the freezing cylinder for the CB-350 and two quarts for the CB-200 in order to make a batch. Less than this will freeze up the machine! Do not turn on the refrigeration switch with only water in the machine. Water is not a dairy blend nor is it a water ice. No sugar or no dairy and your machine will freeze up solid.
4. YOUR BLEND: You're going to have to trust me on this one – I've been building and running Emery Thompson Batch Freezes since I was sixteen years old. Your "blend" which came from a magazine, cookbook or you made it up will work fine in your home ice cream freezer or a cheap Italian or Chinese machine. Why? Because it takes a very long time to freeze – 40 minutes or more as compared to $\frac{1}{4}$ of that time in your new Emery Thompson. And it has little or no freezing capabilities beyond your home refrigerator. Your Emery Thompson has tremendous freezing ability. But without the

~ 2 ~

v. 3.04

Emery Thompson CB-350 Countertop Batch Freezer



EMERY THOMPSON

Machine and Supply Co.

15350 Flight Path Drive, Brooksville, FL 34604

718-588-7300 etfreezers@gmail.com

proper level of solids, your recipe is going to freeze up in a modern piece of dairy equipment. Solids come in the form of sugars, cream and some nuts like cashews. Splenda, Stevia and Xylitol have no solids.. Milk does not have enough solids. Coconut water has virtually no solids. Cream of Coconut does. While you can use all these products in your formula, they alone will not freeze. You are welcome to call us and we can discuss your formula with you... but physics and the laws of freezing cannot be changed. Water and flavor do not alone make a sorbet and milk alone does not make an ice cream.

~ 3 ~

v. 3.04

Emery Thompson CB-350 Countertop Batch Freezer



EMERY THOMPSON
Machine and Supply Co.
15350 Flight Path Drive, Brooksville, FL 34604
718-588-7300 etfreezers@gmail.com

TABLE OF CONTENTS

	IMPORTANT WARNING INFORMATION	Cover
	<i>DON'T DO THIS! (AND WHY)</i>	page 1
Section 1:	UNPACKAGING	page 5
Section 2:	INSTALLATION	page 6
Section 3:	SAFETY	page 7
Section 4:	OPERATION	page 9
Section 5:	CLEANING and SANITIZING	page 14
Section 6:	CARE and MAINTENANCE	page 16
Section 7:	RECIPES	page 18
Section 8:	PARTS DIAGRAMS	page 20
Section 9:	TROUBLESHOOTING	page 22
Section 10:	WARRANTY	page 23

~ 4 ~

v. 3.04

Emery Thompson CB-350 Countertop Batch Freezer



EMERY THOMPSON
Machine and Supply Co.
15350 Flight Path Drive, Brooksville, FL 34604
718-588-7300 etfreezers@gmail.com

Section 1: UNPACKAGING

Carefully inspect the pallet and shipping carton for any signs of damage during shipment; if damage is suspected, have the freight company note it on the bill of lading, and if possible take photographs.

The shipping carton is stapled to two wooden runners inside*. Using a razor knife, carefully cut through the carton all the way around its perimeter **JUST ABOVE** the staple line. The carton is approx. ½” thick. Once free, the carton should be lifted straight up and off of your machine. You will find a small box of parts that will be explained in subsequent sections; set them as well as all paperwork aside in a safe place.

The machine is bolted to the pallet it was shipped on from the underside. There are four hex bolts (9/16” head) that go through the upper planks of the pallet, and into the machine frame. Remove all four bolts, and also unscrew one wooden side runner from the pallet. The machine will now be free from the pallet. Save all components; they can be used at a later date to safely move the machine.

* If your machine was exported outside of North America, it will have an all wood box over it fastened to the runners with removable screws.

~ 5 ~

v. 3.04

Emery Thompson CB-350 Countertop Batch Freezer



EMERY THOMPSON
Machine and Supply Co.
15350 Flight Path Drive, Brooksville, FL 34604
718-588-7300 etfreezers@gmail.com

Section 2: INSTALLATION

Your new machine weighs 275 pounds and has momentum when running; therefore it must be operated on a surface/stand/counter capable of supporting it. It will take a minimum of two people to safely lift it.

In the smaller carton that was included with the machine, there are 4 screw-in feet; these should be installed into the threaded holes on the underside of the machine's frame, where it was previously bolted to the shipping pallet. These allow for minor uneven surfaces. NOTE: if you also purchased the heavy-duty machine stand, you will not be using these feet; follow instruction in the kit that comes with the stand.

The stainless steel shelf clips onto the louvers on the front lower panel; it is adjustable for various height containers/trays. NOTE: The protective plastic film on most outer surfaces of the machine protects the finish during shipping. This film **MUST** be removed prior to operation of the machine to allow proper airflow and heat dissipation.

The machine **MUST** be able to pull in cool, clean room air from its rear intake. It requires a minimum of 10 inches of clear, unobstructed space on all 4 sides. Failure to allow the adequate spacing and/or not removing the protective plastic film may result in poor performance, overheating, and shutdown.

ELECTRICAL CONNECTION: The model CB350 machine comes with a 72 inch long flexible power cord that has an L14 - 20 locking male plug installed on it. It **MUST ONLY** be connected to a matching receptacle which has been wired to a dedicated and fused 20-amp circuit. Your machine has a wiring tag on its cord, as well as electrical specifications on its serial number tag on the rear of the machine. Your electrician can also call us for technical information if necessary during business hours.

~ 6 ~

v. 3.04

Emery Thompson CB-350 Countertop Batch Freezer



Section 3: SAFETY

First, be sure to read and understand this machine manual, and familiarize yourself and other operators with the machine features, its operation, cleaning, and maintenance.

Your machine is equipped with several important safeguards that should never be removed or altered. **DO NOT** remove the following items:

- Inlet spout combination lid and gate – restricts fingers from coming in contact with moving blades/dasher.
- Door discharge guard – restricts fingers and utensils from coming in contact with moving blades/dasher. Also, in combination with the discharge chute, funnels product into smaller containers neatly.

The sides, front, and rear section of the machine have ventilation openings in them. All but the rear panel are louvered to deflect food and splashing liquids away from the inside. Never spray water directly at/into these openings.

If your machine is set up with a plug on the end of its cord, make absolutely sure your hands are dry when plugging it in, or unplugging it.

When operating the machine, avoid distractions such as conversations, television, small children, etc.

The door and the dasher are heavy parts, and are slippery when wet. Use extreme care handling them. Keep the floor and work area neat and dry to avoid slippage. Do not use the top of the machine as a storage spot.



EMERY THOMPSON
Machine and Supply Co.
15350 Flight Path Drive, Brooksville, FL 34604
718-588-7300 etfreezers@gmail.com

Section 3: SAFETY (cont'd)

In addition to the above:

- DO NOT operate your machine unless it was wired, grounded, and properly fused by a licensed electrician.
- DO NOT put fingers, hands or any utensils in either the inlet spout or door outlet.
- DO NOT operate the machine unless it is properly assembled and all guards are in place.
- DO NOT force any of the (washable) parts together or into/on the machine. All parts should fit together easily.
- DO NOT operate the machine with the freezing cylinder empty.
- DO NOT turn on the machine's refrigeration switch with only water in the freezing cylinder.
- DO NOT let your product over-freeze during production. This is the most common mistake a new operator makes.



EMERY THOMPSON
Machine and Supply Co.
15350 Flight Path Drive, Brooksville, FL 34604
718-588-7300 etfreezers@gmail.com

Section 4: OPERATION

Your new batch freezer is very easy to operate, with only two controls on it. The machine was shipped fully assembled, and its' parts and features should be learned and understood.

On the upper right of the face of the machine, there is a rocker-type switch that tips in and out vertically. This energizes the refrigeration condensing unit. Push in on the top for "on", and push in on the bottom for "off". In the "on" position, the green window in the switch will illuminate. Insure that the rocker switch is in the "off" position.

When electrical power is first applied to the machine, the compressor will immediately start, regardless of the position of the refrigeration switch. The compressor also occasionally will start and run briefly, even if the machine sits idle. This is a normal function, and actually helps prolong the life of the compressor.

INFINITE OVERRUN CONTROL

The Infinite Overrun Control is our latest technology designed to give you the finest possible artisan gelato, old-fashioned super-premium hard ice cream, sorbet, sherbet, sorbetto, frozen custard, frozen lemonade, frozen yogurt and Italian ice.....all in one machine!

All of these products have different air contents, or as the dairy industry calls it: "overrun". Gelato has the lowest air content of any dairy product and thus it is produced at a lower beater speed - usually around 140 rpm's. Water ices, which have no dairy product in them and won't take on much air, are run at a high speed of around 234 rpm's.

All of the other products that your Emery Thompson can produce fall within this range.

~ 9 ~

v. 3.04

Emery Thompson CB-350 Countertop Batch Freezer



EMERY THOMPSON

Machine and Supply Co.

15350 Flight Path Drive, Brooksville, FL 34604

718-588-7300 etfreezers@gmail.com

Our I.O.C. allows you to select the product by name that you want to make, and will start the machine at our recommended speed, which will be displayed as rpm's. Any desired change in rpm can be made using the "up" or "down" arrows on that screen. You have full manual control of the speed in any of the "Recipe Run" screens. You also can choose MANUAL, and run the speed anywhere from 130 rpm's up to 234 rpm's. You are then in control! If you wish to add more speed or subtract speed while making any product, just push the up or down arrows, and the speed will change in increments of 5 rpm's per push.

The I.O.C. display will illuminate as long as power is applied to the machine. There is a safety "time-out" feature that makes the Recipe screens and Recipe Run screens revert back to the "Logo" screen after 60 seconds of no selection being made.

The normal sequence of operating the controls of the machine would be as follows:

1) Touch the BEGIN button on the *ET Logo* screen.



~ 10 ~

v. 3.04

Emery Thompson CB-350 Countertop Batch Freezer



EMERY THOMPSON

Machine and Supply Co.

15350 Flight Path Drive, Brooksville, FL 34604

718-588-7300 etfreezers@gmail.com

2) Select and touch the name of the product you wish to make. The display will change to the *Recipe Run* screen for that product, but will not start the machine.

If you advance to the Recipe Run screen to a product you didn't want, touch the STOP button to go back one screen, and make a new selection.



3) Touch the START button, and the machine will start and accelerate up to the pre-programmed speed for that product.

Remember that any desired change in rpm can be made using the "up" or "down" arrows on that screen.



4) Turn ON the refrigeration rocker switch on the right hand side of the machine. **Note that the refrigeration WILL NOT start without the beater running!**



5) When the product has frozen to the desired stiffness, immediately turn OFF the refrigeration switch, and begin to discharge the product.

6) When the product is fully discharged from the machine, close the gate, and touch the STOP button.

~ 11 ~

v. 3.04

Emery Thompson CB-350 Countertop Batch Freezer



EMERY THOMPSON
Machine and Supply Co.
15350 Flight Path Drive, Brooksville, FL 34604
718-588-7300 etfreezers@gmail.com

Section 4: OPERATION (cont'd)

Please also refer to the small white booklet covering the variable speed drive (included in this packet).

RUNNING A TEST BATCH – a simple and inexpensive trial test can be run using just cane sugar and water. Dissolve 2 pounds of sugar into 1 gallon of cold tap water, open the inlet spout lid, and slowly pour your mixture into the machine. **NEVER** pour undissolved sugar into the machine. Touch the "Italian Ice" button, then the **START** button. Now, note the time, or preferably using a countdown timer set it for 8 minutes. Turn the refrigeration switch to **ON**. (note: the green window will illuminate). Start timing the batch. At 8 minutes, the mixture should be semi-frozen; the consistency of slush. It is important not to let the mixture - be it Italian ice, ice cream, etc - get so thick that it will not easily discharge from the machine. If this happens, turn off rocker switch then remove the door by removing the 4 door knobs and manually remove the product. Rocker switch must be in the "OFF" position.

See also **Section 7** for additional recipes.

~ 12 ~

v. 3.04

Emery Thompson CB-350 Countertop Batch Freezer



EMERY THOMPSON
Machine and Supply Co.
15350 Flight Path Drive, Brooksville, FL 34604
718-588-7300 etfreezers@gmail.com

Section 4: OPERATION (cont'd)

INFINITE OVERRUN CONTROL

“You control the machine – it doesn’t control you!”

"Manual" Mode	130-234 rpm's
All-American Homemade Ice Cream	234 rpm's
Super Premium Ice Cream	165 rpm's
Italian Ices	234 rpm's
Artisan Gelato	140 rpm's
Frozen Yogurt	160 rpm's
Cream Ices	200 rpm's
Frozen Custard	135 rpm's
Sorbet/Sorbetto	234 rpm's
Sherbet	170 rpm's
Frozen Lemonade	234 rpm's



Section 5: CLEANING and SANITIZING

NOTE: Your local or state health inspector will always have jurisdiction over the methods and cleaners he/she prefers for the proper cleaning and sanitizing of this type of equipment. Our instructions are based on industry standard methods, but should be discussed with your inspector.

The first step toward insuring a clean and sanitary machine is to understand the various parts that will or could come in contact with the food product. Please see figures 8-1A (Page 16) and 8-1B (Page 17) to familiarize yourself with these parts. All of these parts are dishwasher safe and relatively small, so the easiest way to clean them is to carefully arrange them in a dishwasher, positioning them so that open holes, pockets, and internal areas face down and stand the best chance of being hit with hot soapy water.

Any of these parts can also be cleaned with liquid dish detergent and hot water, so long as they are thoroughly rinsed. The inside of the cylinder will have to be manually wiped out with warm soapy water and thoroughly rinsed.

The following list of components should be cleaned at the end of the day/shift, or if food product has sat in the machine for one hour or more:

- all parts on diagram 8 – 1A
- all parts on diagram 8 – 1B, except “ASSY006”, part 1 and 3 (these parts are inaccessible, and do not come in contact with food). Part #2 of this assembly protrudes into the freezer and should be cleaned/wiped when cylinder is cleaned.



EMERY THOMPSON
Machine and Supply Co.
15350 Flight Path Drive, Brooksville, FL 34604
718-588-7300 etfreezers@gmail.com

Section 5: CLEANING and SANITIZING (cont'd)

Prior to each use your machine must be sanitized. The purpose of sanitization is to kill any bacteria that may have grown on any food-contact part or surface.

To properly sanitize your machine, it must first be reassembled after cleaning. Before putting the dasher/blades assembly back into the machine, note the end of the dasher shaft has two o-rings in it.

These two o-rings, and the circumference of the shaft just forward and rearward of the o-rings should have a generous coating of food-grade grease wiped on them (See diagram 8-1B/Dasher shaft, and Part 6 O-Rings, Page 17) . Once installed, any grease pushed off the shaft can be wiped off with a paper towel. NOTE: Before installing dasher/blade assembly into cylinder, insure that the rounded end of each scraping blade is toward the rear. (See Diagram 8-1B, Page 17.)

When the machine is fully assembled, with the door in place, and the four knobs hand tightened (do NOT use any tools), it is ready to be sanitized.

We recommend using a commercially available sanitizer/cleaner made by Purdy Products Company called “Stera Sheen Green Label”, although other brands exist as well. Carefully follow the manufacturer’s instructions on mixing and use of their product.



EMERY THOMPSON

Machine and Supply Co.

15350 Flight Path Drive, Brooksville, FL 34604

718-588-7300 etfreezers@gmail.com

Section 6: CARE and MAINTENANCE

One of the best features of an Emery Thompson batch freezer is the small amount of maintenance and the ease of care required.

The materials we use are the best available for their intended purpose, and designed for maximum longevity.

The outer casing of your machine is all heavy-gauge stainless steel, and will only require a daily wipe down, using a mild detergent and warm water. A stainless steel cleaner/polish can also be used to keep it bright.

There are two areas that regularly (daily) need to be lubricated with food-grade grease (i.e. PetroJel): the rear of the dasher shaft where the two o-rings sit (diagram 8-1B, part #6), the face of the door, and the gate o-ring, where it slides along the face (diagram 8-1A, part #8 and #9, Pg. 16)

Your machine should be operated in the cleanest environment possible, but after years may need dust or lint removed from the air intake area of the rear. This can be accomplished with a strong vacuum cleaner and soft brush attached.

The following parts are wearable, and should be inspected at least once weekly:

<u>Diagram 8-1B</u>	<u>approx. life</u>
Part #SEAL006 - O-ring, dasher shaft.....	1,000 hrs./ 1 year
Part #SPRG001 - blade spring.....	2,000 hrs./ 2 years
Part #BRNG001 - bearing, dasher front.....	2,000 hrs./ 2 years
Part #BLAD001 - blade, scraping.....	5,000 hrs./ 4.5 years



EMERY THOMPSON

Machine and Supply Co.

15350 Flight Path Drive, Brooksville, FL 34604

718-588-7300 etfreezers@gmail.com

Section 6: CARE and MAINTENANCE (cont'd)

Diagram 8-1A

approx. life

- Part #SEAL007 - O-ring, gate.....1,000 hrs./ 1 year
- Part #FAST024 - washer, Teflon.....1,000 hrs./ 1 year
- Part #SEAL008 - O-ring, door seal.....4,000 hrs./ 4 years
- Part #SPRG004 - spring, gate pressure.....4,000 hrs./ 4 years

If your batch freezer has been stored in an unheated area and is brought into a warmer area for use, allow it to sit for at least 24 hours in the warmer temperature; condensation can build up on cold surfaces, including inside the speed controller, keypad, contactor, and overload relay, which could lead to malfunctions.

Never transport, store or use your machine in any position other than upright on its feet. Oil in the refrigeration compressor could travel into areas of the machines piping where it will remain trapped.

Your machine has been tested and is rated to run in ambient air temperatures as high as 104 degrees Fahrenheit, and as low as 40 degrees Fahrenheit. Operation in temperatures at the high end of the temperature range may slightly increase the freezing time of your product, and at the low end of the temperature range may slightly decrease the freezing time of the product.



Section 7: RECIPES

The following recipes are very basic, and require few ingredients, but are a good starting point to familiarize yourself with freezing times and consistencies, as well as begin to form a production routine. Again, NEVER put undissolved sugar into your machine for any recipe.

Lemon Ice

- 4 quarts of cool tap water
- 2 pounds of sugar
- Zest grated from 2 large lemons
- 20 ounces of fresh-squeezed lemon juice

Mix the sugar with the water in a clean container until the sugar is dissolved. Slowly pour this into your CB350 machine. Add the lemon juice and lemon zest; start the dasher and set at 234 RPM. Then turn on the refrigeration and freeze for 8-10 minutes, depending on desired consistency. Store and serve at 16 degrees F.

Coffee Ice Cream

- 3 quarts 14% ice cream mix
- 1 ounce of vanilla extract
- 2 ounces Taster's Choice instant coffee crystals
- Hershey's chocolate syrup to taste

Pour first three ingredients into machine and start dasher. Turn on refrigeration, and freeze for 10-12 minutes. Add chocolate syrup approximately one tablespoon at a time to taste (takes away bitterness of coffee).



Section 7: RECIPES (cont'd)

Bordeaux Wine Sorbet

- 1 pound of sugar
- 24 ounces of tap water
- 1 bottle (750 ml) red Bordeaux wine
- 12 ounces red raspberries
- (optional) 4 grams of stabilizer

Mix the sugar with the water in a clean container until the sugar is dissolved. Slowly pour this and the remaining ingredients into the machine; start dasher, then the refrigeration. Freeze for approximately 10 minutes (makes $\frac{3}{4}$ of a batch)

Fresh Mango Sorbet

- 1 pound of sugar
- 26 ounces of tap water
- 3 pounds of fresh mango
- juice of one lemon

Mix the sugar with the water in a clean container until the sugar is dissolved. Slowly pour this and the remaining ingredients into the machine; start dasher, then the refrigeration. Freeze for approximately 12 minutes.



EMERY THOMPSON

Machine and Supply Co.

15350 Flight Path Drive, Brooksville, FL 34604

718-588-7300 etfreezers@gmail.com

CB350 DOOR ASSY 2.0

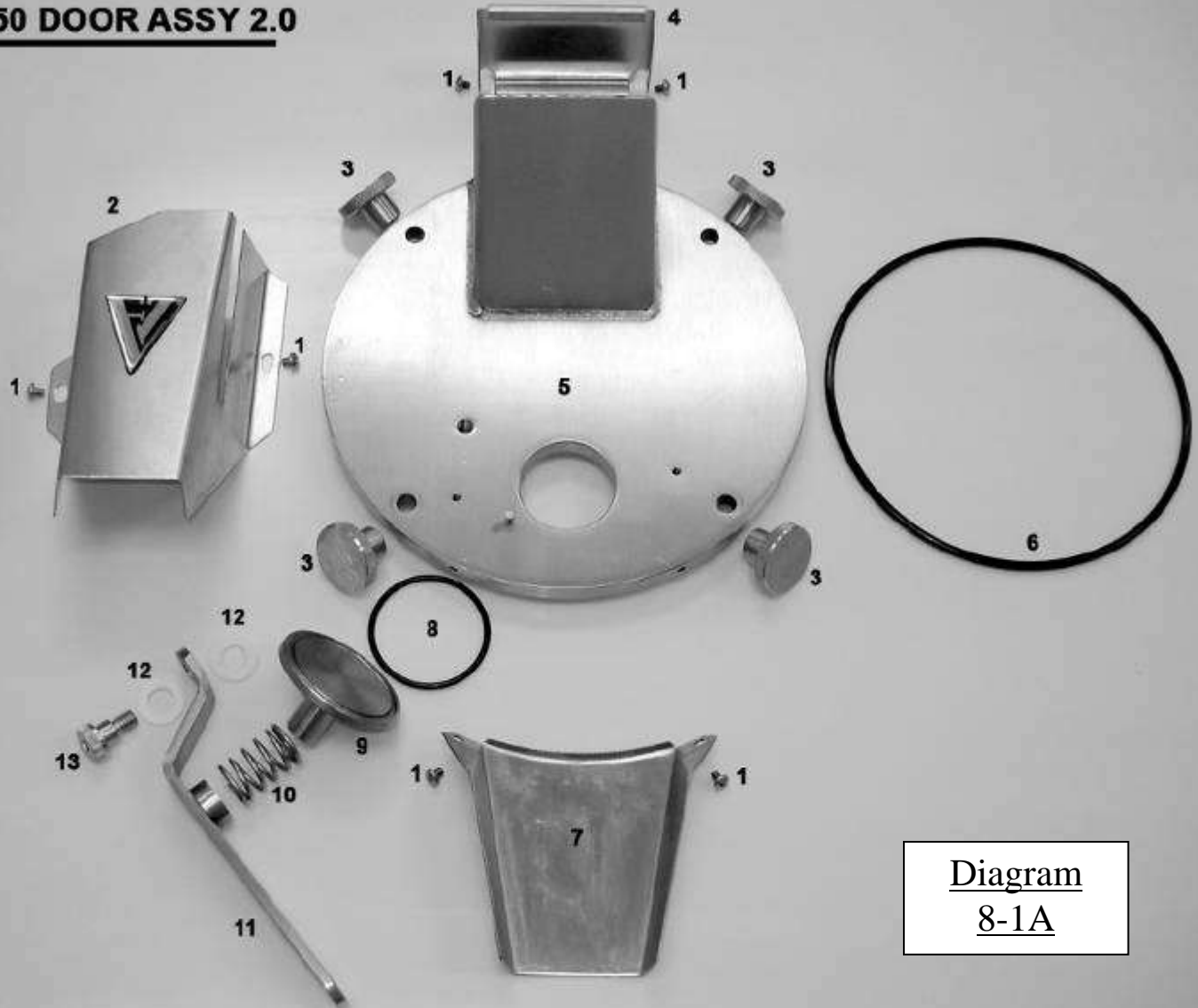


Diagram
8-1A

1	FAST025	screw, #10-24 x 1/4" long, 18-8 SS phillips head (6X PER DOOR)
2	STML005	guard, door discharge, 18 ga. 304 sheet metal
3	FAST015	knob, knurled ss, 3/8"-16 blind threaded (4X PER DOOR)
4	STML004	cover, spout inlet guard, 18 ga stainless steel
5	MECH008	door, w/spout, polished 303 ss
6	SEAL008	o-ring, CB350 door seal
7	STML012	chute, discharge, 12 and 24 quart and CB350
8	SEAL007	o-ring, CB350 gate
9	MECH007	discharge cover, sliding (gate)
10	SPRG004	spring, discharge cover pressure, CB350, SS
11	MECH010	handle, discharge cover sliding, 303 ss
12	FAST024	washer, teflon, door handle swivel
13	FAST011	shoulder bolt, door handle, 1/2" diam. 18-8 stainless steel

v. 3.04

Emery Thompson CB-350 Countertop Batch Freezer



EMERY THOMPSON

Machine and Supply Co.

15350 Flight Path Drive, Brooksville, FL 34604

718-588-7300 etfreezers@gmail.com

CB350 MIX ASSY 2.0

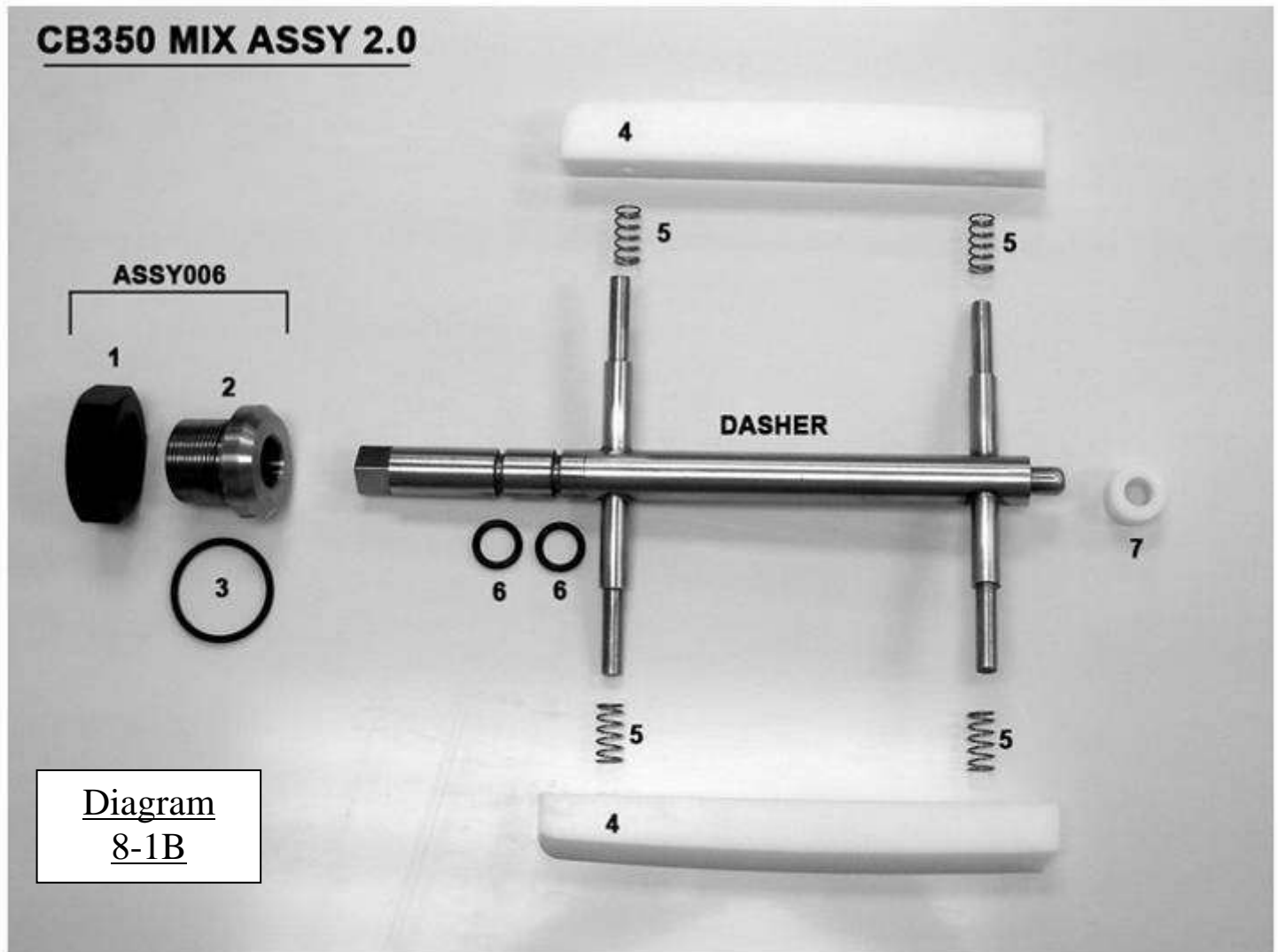


Diagram
8-1B

	ASSY006	kit, CB350 back jacket bushing replacement
1	FAST009	nut, 1 1/2"-12 left-hand, black Delrin, CB350
2	BUSH009	bushing, back jacket, CB350
3	SEAL005	"Not Serviceable" - Part of BUSH009
4	BLAD001	blade, solid Delrin, CB350 machines (2X PER MACHINE)
5	SPRG001	blade spring, CB350 machines (4X PER MACHINE)
6	SEAL006	o-ring, CB350 dasher shaft (2X PER MACHINE)
7	BRNG001	bearing, dasher shaft front, white delrin, CB350
7		
7		
8		
9		
10		

~ 21 ~

v. 3.04

Emery Thompson CB-350 Countertop Batch Freezer



Section 9: TROUBLESHOOTING

Also see our online Help Desk at <http://www.emerythompson.com/HelpDesk.htm> or scan this QR Code with your smart phone or tablet for instant access.



(Note: see also section 16 of the motor drive manual included in your packet)

Problem	Solution
Dasher not spinning	Contents frozen too stiff – allow to thaw and soften or remove bulk of product. Push “stop” button, and attempt restart.
Dasher spins, but refrigeration will not run. (refrigeration switch illuminated)	Compressor has tripped off. Turn off switch; allow unit to cool for 1 hour minimum; attempt restart.
Unit runs, but takes too long, or longer than usual to freeze product.	Airflow restricted or coils dirty/blocked. Provide adequate airflow and/or clean coil area.
Squeaking noise when dasher runs.	Insure that dasher shaft has been lubricated properly at o-ring area.
Grinding noise while making product; build-up on cylinder walls.	Blades installed incorrectly; one or more blade springs missing.
Sliding gate is leaking	O-ring on gate is either not in gate groove or worn out; surfaces not lubricated correctly.
Door will not pull back on studs; blades sticking out beyond face.	Rear of dasher is not engaged into drive motor socket. Rotate dasher and push backward.
Machine sways/shakes while running	Feet or mounting surface uneven; adjust feet so that each has equal pressure.
Door is leaking around edge(s)	Door seal O-ring uneven/not fully seated in its groove. Remove and reinstall



EMERY THOMPSON
Machine and Supply Co.
15350 Flight Path Drive, Brooksville, FL 34604
718-588-7300 etfreezers@gmail.com

Section 10: WARRANTY

12 Month Limited Warranty on New Freezers

Except as limited and conditioned hereafter, The Emery Thompson Machine and Supply Company, Inc. (hereinafter referred to as the “Company”) warrants to the original purchaser and user only, the said machine and all parts thereof to be free from defects in material and workmanship for a period of twelve (12) months from the *date of shipment* from the company’s factory if it is proved to our satisfaction to be inoperative due to defects in material or factory workmanship. **CAUTION:** this warranty is valid only if required service is provided by an authorized agent of the Company or person or persons directly authorized by the Company to perform the necessary repairs. Emery Thompson Machine and Supply can be reached at (ph)718-588-7300, (fax)352-796-0720, or (email) ETFREEZERS@GMAIL.COM

Definitions: The term “original purchaser” used herein shall be deemed to be that person, firm, association, or corporation for whom the equipment referred to herein is originally sold to.

The term “Company” or “Factory” shall mean the plant of the company located at 15350 Flight Path Drive, Brooksville, Florida 34604 U.S.A.

Labor and Transportation Charges: the Company assumes no liability under the warranty for any transportation charges or labor expenses incident to its work under this warranty; such transportation expenses and labor costs to be assumed and paid for by the purchaser.

Use and Care of the Machine: Purchaser shall only use the machine in accordance with the operator’s manual provided by the Company and no liability under this warranty or otherwise shall attach by reason of a defect caused by negligence, abnormal use, misuse or abuse of said machine, or for any accident that may occur to said machine, or any part thereof after said machine has left the Factory, nor for any defects that may arise by placing any part in said machine which has not been manufactured or approved by the Company. Misuse of the machine includes owners failure to (1) clean, lubricate and assemble per the Operators Manual; (2) replace damaged or worn “wear items” which include but not limited to O-rings, gaskets, front bearings, rear bearings, scraper blades, drive shaft or water valve. (3) handle parts properly, resulting in breakage; or (4) use unauthorized service agencies.

Purchaser shall not remove, alter, or deface the serial number on said machine, and there will be no liability of Emery Thompson Machine and Supply Company if any of same shall occur.

~ 23 ~

v. 3.04

Emery Thompson CB-350 Countertop Batch Freezer



EMERY THOMPSON
Machine and Supply Co.
15350 Flight Path Drive, Brooksville, FL 34604
718-588-7300 etfreezers@gmail.com

Section 10: WARRANTY (cont'd)

Repair or Replacement of Defective Parts: The Company's obligation under this warranty is limited to the repair of defective parts at the Brooksville, Florida Factory, or replacement from the Company's own inventory. In the event the Company ships a replacement part prior to the return of the defective part, payment will be required for said part and credit issued or reimbursement made *only if the defective part is returned within thirty (30) days from the replacement date.*

WARNING: The use of alternate refrigerants **WILL** void your warranty. Use only the refrigerant specified on this unit's data plate found on the rear panel.

Emery Thompson Machine and Supply Company, Inc. reserves the right to make design changes, or to make additions to, or improvements on its products without imposing any obligation on itself to make such changes on its products previously manufactured.

This warranty is exclusive and is in lieu of all other warranties and remedies under the law, including any implied warranty of merchantability or fitness for a particular purpose. The original owners sole remedy with respect to any Emery Thompson freezer shall be repair or replacement of defective components under the terms of this warranty. All rights to consequential or incidental damages (including claims for lost sales, lost profits, property damages, or service expenses) are expressly excluded. No distributor, dealer, or other person is authorized to make any commitment or assume any liability on behalf of Emery Thompson Machine and Supply Company, Inc. beyond this warranty.

This warranty is **NOT TRANSFERRABLE.**

~ 24 ~

v. 3.04

Emery Thompson CB-350 Countertop Batch Freezer