

KEEP THIS MANUAL IN GOOD CONDITION, PLEASE  
READ THIS MANUAL CAREFULLY BEFORE USING  
THE MACHINE

WATER PURIFIER

# User Manual

Model: JL1643S-UF

## 1. PRECAUTION

### 1-1 Safety Issues


- To reduce risk of injury and property damage, user must read this entire guide before assembling, installing and operating the dispenser.
- Failure to execute the instructions in this manual can cause personal injury or property damage.
- This product dispenses water at very high temperatures. Failure to use this properly can cause personal injury.
- When operating this dispenser, always exercise basic safety precautions, including the following:
- Prior to use, this dispenser must be properly assembled and installed in accordance with this manual.
- This dispenser is intended for water dispensing only. Do NOT use other liquids. Do NOT use for other purposes. Never use any other liquid in the dispenser other than known microbiologically safe tap water.
- For indoor use only. Keep water dispenser in a dry place away from direct sunlight. Do NOT use outdoors.
- Install and use only on a hard, flat and level surface.
- Do NOT place dispenser in an enclosed space or cabinet.
- Do NOT operate the dispenser in the presence of explosive fumes.
- Position back of dispenser no closer than 20 cm from wall and permit free airflow between wall and dispenser. There must be at least 20 cm clearance on the sides of the dispenser to permit airflow. Use only properly grounded outlets.
- Do not use an extension cord with your water dispenser.
- Always grasp plug and pull straight out from outlet. Never unplug by pulling on power cord.
- To protect against electric shock, do NOT immerse cord, plug or any other part of the dispenser in water or other liquid.
- Ensure dispenser is unplugged prior to cleaning.
- Never allow children to dispense hot water without proper and direct supervision. Unplug unit to prevent unsupervised use by children.
- Service should be performed only by a certified technician.
- Warning: Do not damage the refrigerant circuit.
- This appliance can be used by children aged from 8 years and above if they have been given supervision or instruction concerning use of the appliance in a safe way and if they understand the hazards involved. Cleaning and user maintenance shall not be made by children unless they are older than 8 and supervised. Keep the appliance and its cord out of reach of children less than 8 years.
- Appliances can be used by persons with reduced physical, sensory or mental capabilities or lack of experience and knowledge if they have been given supervision or instruction concerning use of the appliance in a safe way and understand the hazards involved. Children shall not play with the appliance.
- This appliance is intended to be used in a household and similar applications such as: kitchen area in shops, offices and other working environments, bed and breakfast type environments, catering and similar non-retail applications.
- Do not store explosive substances such as aerosol cans with flammable propellant in this appliance.
- If the supply cord is damaged, it must be replaced by a special cord assembly available from the manufacturer or its service agent.
- Never turn the machine upside down or lean it more than 45°.
- Thermostat has been adjusted. There is no need to adjust it by yourself. When the matching is below the freezing point and blocked by ice, the cooling switch should be turned off for 4 hours before turning it on again to continue its operation.
- This machine should not be plugged back in until 3 minutes after it has been unplugged.
- The new hose-sets supplied with the appliance are to be used and that old hose-sets should not be reused.

## **⚠ R600a SAFETY INSTRUCTION**

- **WARNING:** Risk of fire / flammable materials!
- **WARNING:** During transportation, installation, cleaning & use of the appliance, care should be taken to avoid damage to the refrigeration circuit which could result in a refrigerant leak.
- **WARNING:** Do not use mechanical devices or other means to accelerate the defrosting process, other than those recommended by the manufacturer.
- **WARNING:** Do not use electrical appliances inside the reservoir, unless their use has been recommended by the manufacturer.
- This refrigerant is flammable - please follow these precautions to ensure safe operation of the appliance:
  - Keep ventilation openings in the appliance clear of obstruction.
  - If damage to parts that contain refrigerant damage occurs, then avoid any open flames or potential sources of ignition and ventilate the room where the appliance is located for thirty minutes.
  - Servicing of this appliance should only be carried out by trained and qualified personnel.
  - Old units must be disposed of safely in accordance with local laws. Contact your municipal authority about disposal of WEEE in your locality.
  - Do not use an extension cord as it may overheat, increasing the risk of fire.
  - Never turn the dispenser upside down. If the dispenser has been resting on its side for a long period of time, place the unit in the upright position for approximately 12 hours before using.
  - Keep your water dispenser in a dry place away from direct sunlight.

## **WARNING-GENERAL**

- To avoid hazard due to instability of the appliance it must be fixed according to the instructions.
- When positioning the appliance, ensure the supply cord is not trapped or damaged. Do not locate portable socket-outlets or portable power supplies at the rear of the appliance.
- Hot water can scald.

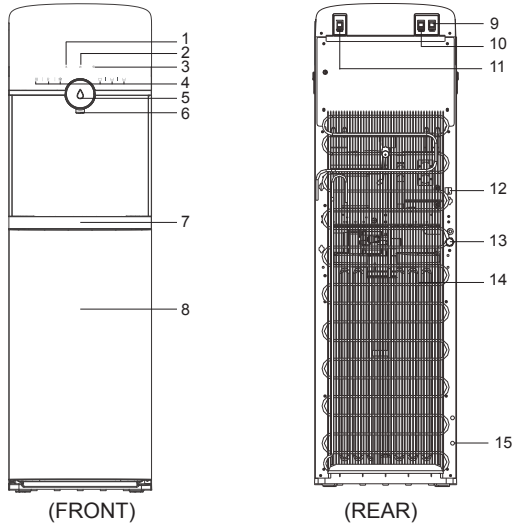
 <b>R600a</b>	<p><b>DANGER:</b> Flammable Refrigerant Used. To be repaired only by trained service personnel. Do not puncture refrigerant tubing.</p> <p><b>CAUTION:</b> Risk of Fire or Explosion. Dispose of properly in accordance with National or local regulations.</p>
--	---

### **1-2 packing list**

Packing box	Bracket(1pc)、 1/4" PE pipe(3m)
Materials bag	User's Manual(1 copy)
Materials bag	6/8"-2/8" connector(1pc) , Filter flushing tip(1pc)
Filter	PP Sediment Filter(1pc), C1 Pre Carbon Filter(1pc)、 C2 Post Carbon Filter(1pc), UF Ultra Filtration Filter (1pc)

## 2. YOUR DIRECT DRINKING WATER PURIFIER

### 2-1 Part Name of Water Purifier



NO.	PART NAME	NO.	PART NAME
1	Heating pilot lamp	9	Heating switch
2	Cooling pilot lamp	10	Cooling switch
3	Filter lamp	11	Filter reset button
4	Dispenser controls panel	12	Power supply cord
5	Water button	13	Hot water outlet
6	Spout	14	Condenser
7	Water collector	15	Water inlet
8	Door		

**NOTE:**

Please use the product in a place with temperature of 4-40°C and relative humidity less than 90%. TO enhance produce performance, product parts may be changed without notice.

## 2-2 Model and Major Parameters

Model	JL1643S-UF
Rated voltage	220-240V~
Rated frequency	50/60Hz
Rated power	500W
Heating power	420W
Cooling current	1.0A
Refrigerant	R600a(14g)
Rated pure water flow	1.2L/min(0.3MPa)
Hot water capacity	4L/h( $\geq 85^{\circ}\text{C}$ )
Cold water capacity	2L/h( $\leq 10^{\circ}\text{C}$ )
Applicable environment	4-40°C humidity $\leq 90\%$
Applicable water pressure	0.1-0.4MPa
Applicable water	Tap water TDS $\leq 350$ ppm
Applicable water temperature	5~38 C
Stage 1	PP Sediment Filter
Stage 2	C1 Pre Carbon Filter
Stage 3	C2 Post Carbon Filter
Stage 4	UF Ultra Filtration Filter
Product size	310(W)x375(D)x1061(H)mm

## 2-3 Product Features

1. Fresh pure water: four stage high-precision filtration to ensure effluent water quality.
2. Compressor for cooling: adopt stable, high-efficiency and low noise compressor.
3. Quadruple anti-dry burning protection: filtered water was provided to hot tank in priority, water level control system identifies the water level automatically, double protection of thermostat, quadruple anti-dry burning protection system.
4. Quick connect fitting technology: adopt Korean quick connect fitting technology which has outstanding sealing and no water leakage.
5. The indicators blink: when all the indicators on the front panel begin to blink, it means that the water leakage detection plate on the base plate is soaked by the water. It may cause by external water which splashes on the base plate or the leakage of the unit. The solution to recover it is to dry the base plate, and then power on the unit.

## 2-4 Product Functions

### ●High-precision filtration, pure water quality

Through high-precision four stage filtration system, it filters granules, iron rust, colloids bacteria, residual chlorine and impurities in water.

### ●Satisfy demand of drinking water and kitchen water

It can make water in 24 hours continuously according to needs. Ample water satisfies demand of drinking water and kitchen water.

### ●Keep fresh pure water

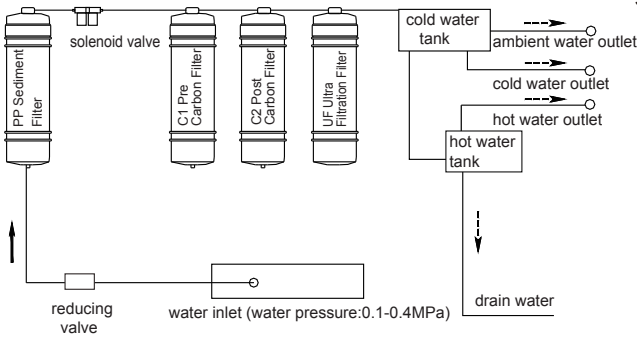
It is connected to tap water directly, can make water continuously and keep dissolved oxygen in water, ensuring fresh pure water for drinking and kitchen use.

### ●Humanized safety protection

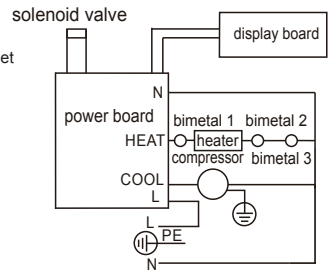
A series of humanized designs guarantee safety of water consumption completely, like lighting device, childproof faucet and quadruple anti-dry burning protection.

## 2-5 Working principle

### 1. Flowchart of water generation



### 2. Circuit diagram



### 3. Filter Function Introduction

Stage	Filter	Function
Stage 1	PP Sediment Filter	Carry out coarse filtration of original water, and filter out mud, sand, impurity, iron rust and suspension, etc
Stage 2	C1 Pre Carbon Filter	Absorb unusual colors and odors, Remove residual chlorine and organic substances in water
Stage 3	C2 Post Carbon Filter	Further absorb micro-molecules and organic substances in water. Make water taste better
Stage 4	UF Ultra Filtration Filter	Remove bacteria, iron rust, colloids and impurities in water

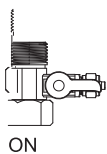
## 3. Use Guide and Maintenance

### Guidance on Unpacking and Installation

**WARNING:** Please cut off water source before replacing filters. Never plug filters in water running state.

#### 3.1 Guidance on Unpacking and Installation

1. Open the top of the packing case, take out the top foam and its accessories.
2. Put the accessories aside.
3. Unpack the product.
4. Take out the inlet ball valve.
5. Attach inlet ball valve to tap water pipe.
6. Attach the PE pipe to the inlet ball valve (Insert firmly until it hits).

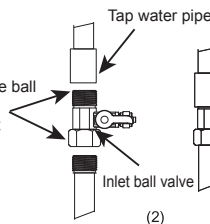


(1)



OFF

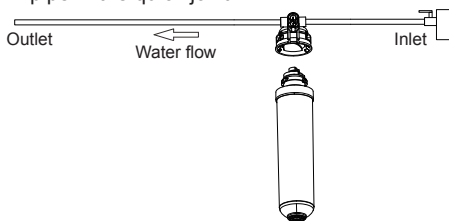
The torque of the ball valve connecting pipeline is about 2.1N.m



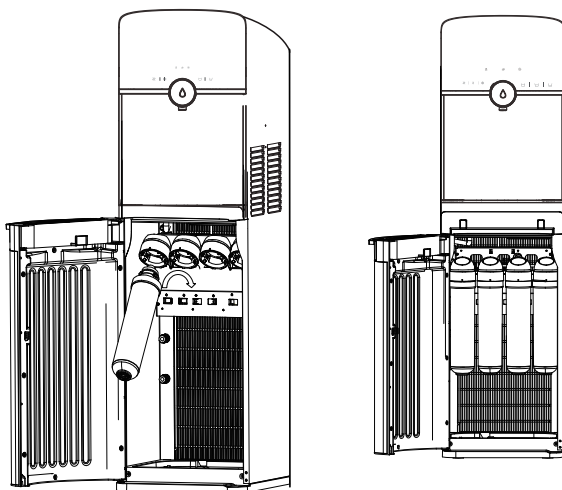
(2)

Insert PE pipe firmly until it hit, tighten the hex nut securely. After connecting the PE pipe, the nut locking force is about 0.65 N.m

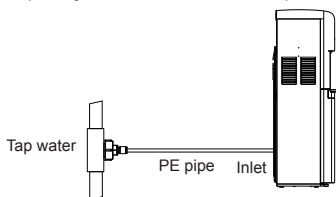
7. Use the after sale accessory—filter flushing tip, the arrow direction is the water flow direction, insert the PE pipe in the quick joint.



8. Insert the Front active carbon filter into the filter flushing tip, and open the water tap to flush the filter till it doesn't discharge black water, for about 10min; Take the same step to flush the Post active carbon filter.
9. Install the clean filter in the product, the installation order is: PP Sediment Filter → C1 Pre Carbon Filter → C2 Post Carbon Filter → UF Ultra Filtration Filter



10. Take out the pin of the quick joint at the rear of the products side plate's, and then take out the white plug.



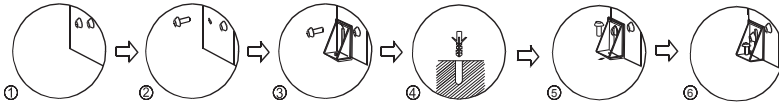
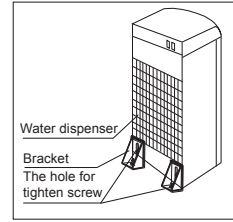
11. Insert the water inlet PE pipe in the quick joint, and tighten the pin.
12. After installing, supply power, and use it normally.
13. The water cooler plug cord into a ground fault interrupter receptacle.
14. When installing filter and replace filter please turn off the water and power supply before installation and replacement.

### Activate Heating & Cooling

To activate, push top side of power switches in to start heating and cooling water.

### 3-2 Machine Installation

- 1-2. Loosen the screw of the left or right bottom angle just as the picture shown.
3. Use the screw to fix the bracket on the left or right bottom angle of the water dispenser.
4. Make a hole on the floor's or the desk's surface where the water dispenser will be installed.
5. Fix the bracket on the floor by screw tightly.
6. Tighten the screw.



**WARNING!** To avoid a hazard due to instability of the appliance, it must be fixed in accordance with the instructions.

### 3-3 The display panel is shown as below:

#### Dispensing water

This unit has been tested and sanitized prior to packing and shipping. During transit dust and odors can accumulate in the tank and lines. Dispense and dispose at least one quarter of water prior to drinking any water.

#### Dispensing Cold Water

After setup, it will take up 1 hour to get water to maximum cold temperature. During this time the compressor could run continuously. This is normal.

1. While the “❄” turns off, Position bottle or cup below spout.
2. Touch the cold water button “❄” and “☐”, then touch the get water button “△” the indicator turns on and the device starts discharging cold water. The machine will dispensing about 500 mL.
3. Touch the cold water button “❄” and “☐”, then touch the get water button “△”, the indicator turns on and the device starts discharging cold water. The machine will dispensing about 250 mL.
4. Touch the cold water button “❄” and “☐”, then touch the get water button “△”, the indicator turns on and the device starts discharging cold water. The machine will dispensing about 150 mL.

#### Dispensing Ambient Water

1. Touch the ambient water button “☺” and “☐”, then touch the get water button “△”, the indicator turns on and the device starts discharging ambient water. The machine will dispensing about 500 mL.
2. Touch the ambient water button “☺” and “☐”, the touch the get water button “△”, the indicator turns on and the device starts discharging ambient water. The machine will dispensing about 250 mL.
3. Touch the ambient water button “☺” and “☐”, then touch the get water button “△”, the indicator turns on and the device starts discharging ambient water. The machine will dispensing about 150 mL.

#### Dispensing Hot Water

1. While the “☀” turns off, Position bottle or cup below spout.
2. Touch the hot water button “☀” and “☐”, then touch the get water button “△”, the indicator turns on and the device starts discharging hot water. The machine will dispensing about 500 mL.



3. Touch the hot water button “⏏” and “⏏”, then touch the get water button “⏏”, the indicator turns on and the device starts discharging hot water. The machine will dispensing about 250 mL.
4. Touch the hot water button “⏏” and “⏏”, then touch the get water button “⏏”, the indicator turns on and the device starts discharging hot water. The machine will dispensing about 150 mL

### 3-4. Filter Replacement Cycle

PP Sediment Filter	C1 Pre Carbon Filter	C2 Post Carbon Filter	UF Ultra Filtration Filter
(approximately 3-6 months)	(approximately 6-12 months)	(approximately 6-12 months)	(approximately 12-18 months)

Special hints:

The data above are for references only. It is based on 10L per daily drinking water.

The specific cycle for replacement of filters varies with local water quality and water amount consumed.

#### Maintenance of Filtration System:

- 1) While the “⊙” is splashing, it indicates the filter should be changed.
- 2) Checking the filter replace advise table at the last of the manual and find out which filter should be replaced. To buy the new one from where you buy the product.
- 3) To replace the maturity filter by the new one.
- 4) After replacement, please press the reset button at the back of top cover, until the “⊙” light stop splashing.
- 5) After the above 4 steps, you can use the product as usual.

### 3-5. Maintenance

1. Keep this machine in a dry and cool place and avoid direct sunshine. Rearward of the machine shall be at least 20cm away from the wall. Never put the machine on paper or foam, which may store water and then cause creepage. Never put anything flammable beside this machine. Do not use the machine outdoors or in a place that can be splashed by water.
2. For the water purifier, the installation and replacement of filters must be carried out by qualified personnel.
3. In case the machine is not in use for a long time, turn off the heating switch or the refrigerating switch to save power.
4. In case the machine is not needed for a long time, please take off the plug, turn off the copper chromeplated ball valve and drain off the remaining water through the outlet. For another use, discharge water for 10 min. In the event that the machine is blocked by ice due to the environment below ice point, keep the refrigerating switch closed for 4 hours and then turn it on to continue the operation.
5. In case the water supply is cut off, please close the feed water ball valve and cut off the power. After water re-supply, please open the other faucets to discharge sediment and then turn on the feed water ball valve.
6. The machine must use an earthed three-pin socket and a reliable creepage protection switch.
7. Never use organic solvents such as gasoline to clean the machine; strictly prohibit washing the machine with water or splashing water to the machine.
8. Never turn on (off) the machine by inserting the plug into (pulling the plug out from) the socket. Never increase the length of the supply cord to avoid fire.
9. If the supply cord is damaged, it must be replaced by the manufacturer or qualified person so as to avoid a hazard.
10. The water source for the water purifier is civil tap water.
11. Never dismantle spare parts of the machine to avoid water leakage or damage.

12. Never turn the machine upside down or lean it more than 45° when moving it so as to avoid any damage to it or any accident.
13. Limited warranty: electrical components and water system are warranted for 12 months from date of purchasing.

### 3-6. Troubleshooting

In case of failure, please carry out inspection according to the requirements below. If unresolved, please contact the local service agency.

Failure	Cause	Solution
Small water flow	Low water pressure	Check the booster pump or water inlet
	Filter not replaced in time, beyond the use time	Please contact the local service agency to replace the filter
Unsuitable water temperature	Over consumption of water in a short time	Just wait a moment, and water is available again
	Power supply not put through	Switch on power supply
	Corresponding functions not started	Press a corresponding function key to start the function
Water leakage	Pipe not connected properly	Inspect the connector to connect the pipe properly
	Water pipe and PE pipe bursting	Replace the water pipe and PE pipe
“△” light flashing	There should be leakage.	Check the PCB on the base plate. Repair the machine and dry the PCB, and then power on again.
Electric leakage	Machine in poor contact with ground	Use a three-pin socket with earth wire, making the machine grounded properly
Noisy operation	Not installed steadily	Place the machine on a steady & solid surface
Machine fails to run	Power supply not put through	Switch on power supply

It is a normal state that the following circumstances occur when the water purifier is used.

1. During the heating, the heating tube may generate slight noises. This is a normal state.
2. When the heating tank is being heated without water, the anti dry-burning device will disconnect automatically and can not reset by its own. The reset must be completed by a professional technician. The design is in accordance with the national safety requirements.
3. When an ambient temperature is higher, the cooling capacity may be slower, which is a normal state.

The packaging material used is recyclable; we recommend that you separate plastic, paper and cardboard and give them to recycling companies. To help preserve the environment, the refrigerant used in this product is R600a, which does not affect the ozone layer and has little impact on the greenhouse effect. According to WEEE (Waste of Electrical and Electronic Equipment) guidelines, waste from electrical and electronic devices should be collected separately. If you need to dispose of this appliance in the future, do NOT throw it away with the rest of your domestic garbage. Instead, please take the appliance to the nearest WEEE collection point, where available.



The product is subject to change without notice.  
Please keep this manual properly.