

COMPANY BROCHURE

powerpro.ng



WHO WE ARE



Powerpro provides sales and support of Test, Measurement, Energy Management, Asset Maintenance, Industrial Automation, Personal and Plant Safety solutions from leading manufacturers to the West Africa market.

At Powerpro, we are passionately committed to delivering innovative products as well as reliable services well-tailored to meet customer needs. We help our customers effectively evaluate their plant asset's performance, extend asset mid-life and minimize the occurrence of expensive unplanned outages.

As project partners, we at Powerpro pride ourselves in our ability to plan, design, construct and execute new projects, plant expansions, perform machine installations etc.

We differentiate ourselves by offering a complete and innovative range of solutions and complement them with our field and lab calibration services, prompt deliveries, and reliable after sales support.



OUR CORE AREAS

- Sales and Support of Test and Measurement Solutions
- Industrial Automation, Drives and Controls Electrical Testing Services and Equipment Rentals
- Electrical Projects
- Calibration and Shop Services
- Cable jointing & Termination Kit



Sales and Support of Test and Measurement Solutions



Electrical test, Measurements, Troubleshooting and Maintenance tools

With several years experience in the supply and service of Fluke tools, Powerpro has an unprecedented knowledge, delivery time and after sales support on Fluke tools.

The Fluke brand is synonymous with technological advancements and as such, launched products in new categories and even re-vamped/upgrade existing solutions in other lines.



Acoustic Imaging And Partial Discharge Testing



Solar Installation And Testing Solutions



Special Clamp Meters 1500V Cat III AC/DC
Clamp Meter, Voltage Clamp ON meters



Battery Analyzers



Earth Ground Testers



Oscilloscope



Power Quality



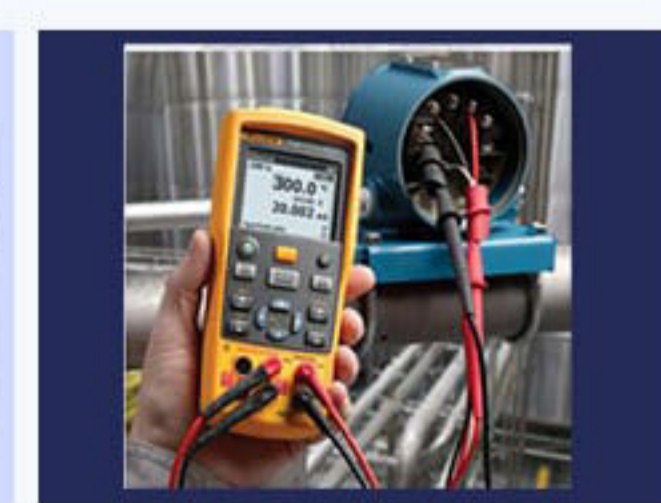
Digital Multimeters



Electrical Testers



Thermal Cameras



Process Calibration
Tools



Insulation Testers



About Fluke Reliability

Fluke Reliability provides hardware, software, and services to optimize asset performance.



The Fluke Reliability family includes eMaint’s award-winning asset management software, Prüftechnik’s world-class condition monitoring and alignment devices, and Azima DLI’s leading AI-powered machine health analysis. In Industries such as Automotive, Food & Beverage, Life Sciences, Facility Management Software, Manufacturing, Oil & Gas. (<https://reliability.fluke.com/>)

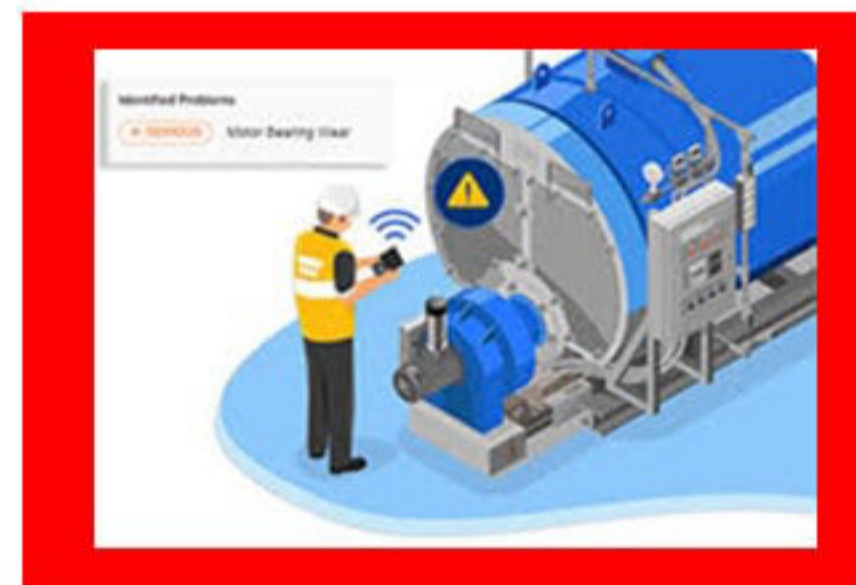
Under Fluke, we bring leading brands PRUFTECHNIK, eMaint, and Azima DLI together to create a unique connected reliability ecosystem that enhances system, machinery, and team collaboration. The essence of a connected reliability ecosystem lies in its potential. We’re paving the way for AI-enabled predictive functionalities, integrating data acquisition, and leveraging analytics. This fusion of technology and innovation empowers maintenance teams, driving them to operate smarter, faster, and more effectively than ever before.

The Benefits of Connected Reliability:

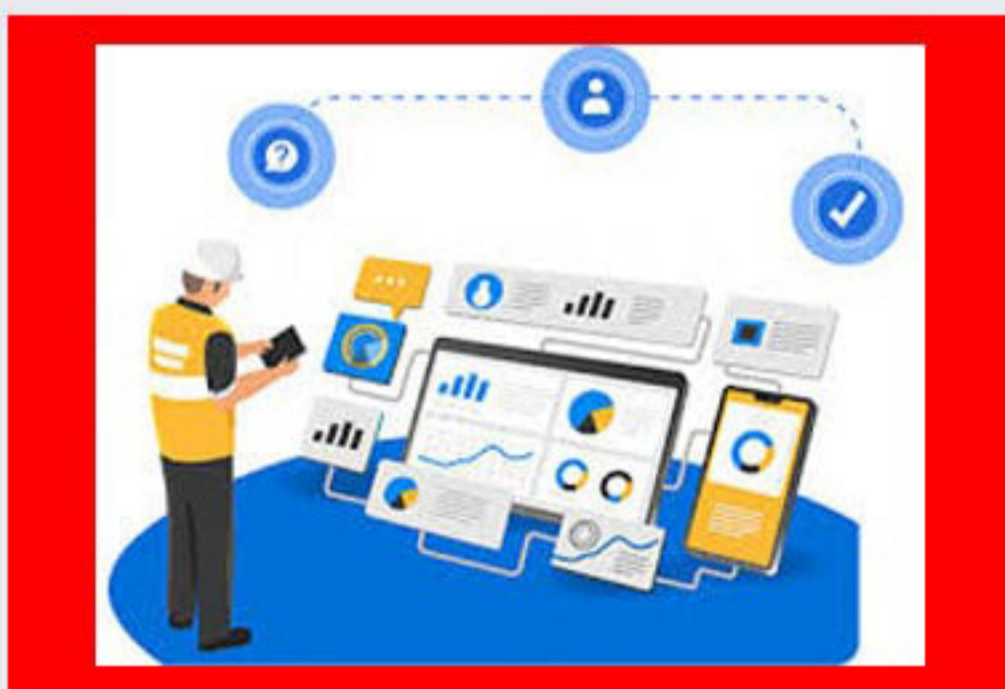
- Moves Maintenance from Reactive to Proactive,
- Improves Cross-Functional Visibility and Communication,
- Encourages a Strategic Approach to Adopting New Tech & Systems,
- Improves Maintenance Through Standardization,
- Moves the Needle on High-Impact KPIs,
- Saves Costs and Boosts Productivity.



eMaint CMMS



Azima DLI Vibration Monitoring



Azima DLI Advanced AI Software



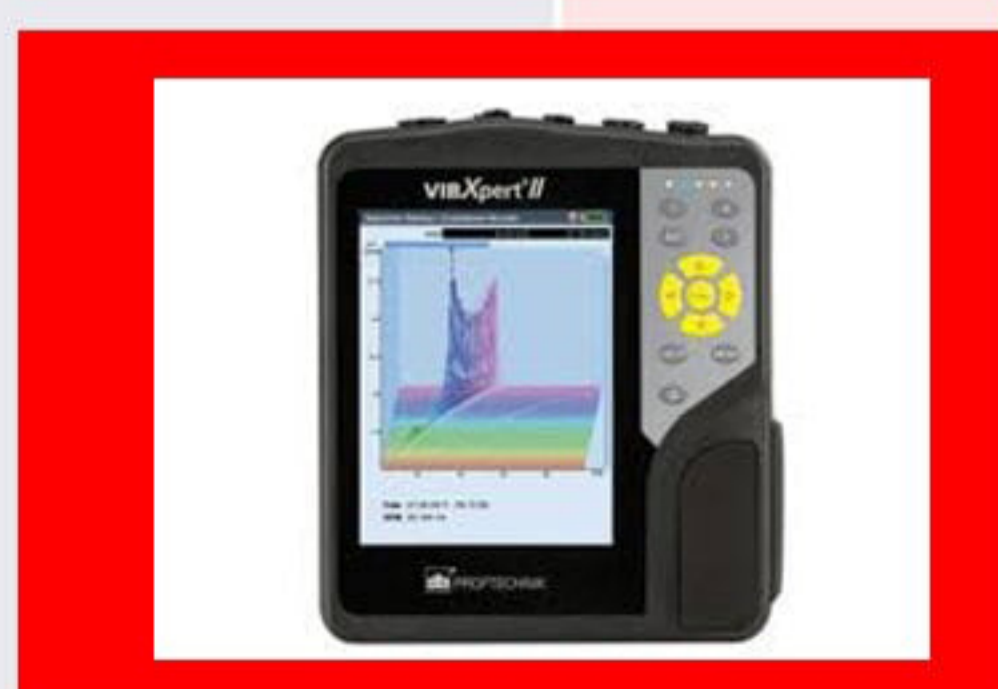
Pruftechnik Rotalign Touch



Pruftechnik Alignment Reliability Centre 4.0



VIBSCANNER 2

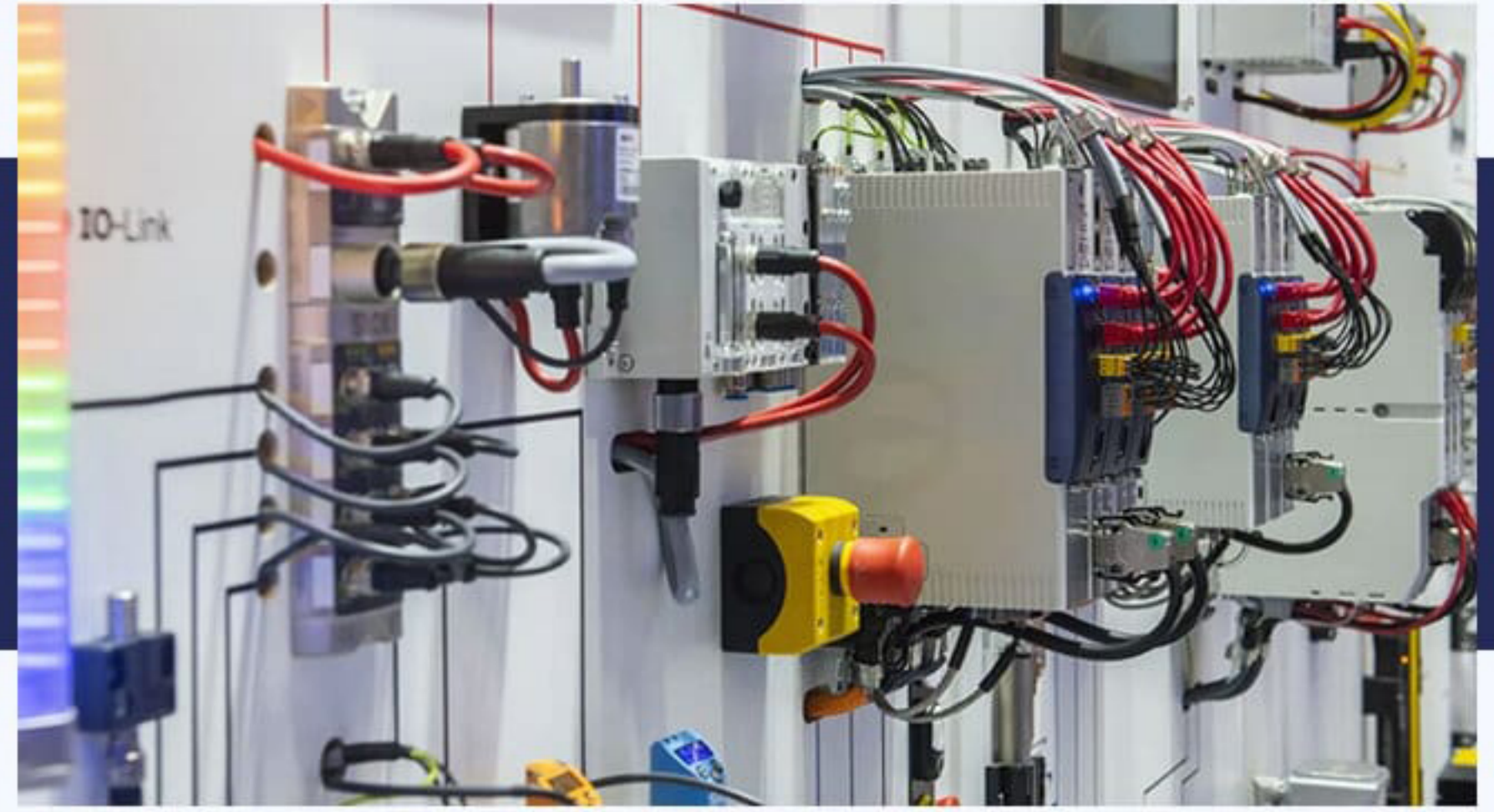


VIBXPERT 2



OMNITREND CENTER & ASSET OVERVIEW

Industrial Automation, Drives and Controls Electrical Testing Services and Equipment Rentals



Industrial Automation, Drive & Control

Rockwell Automation is dedicated to delivering smart, reliable, scalable and innovative industrial automation products and solutions to meet your needs. What Powerpro Offers:

- Sales
- Hardware
- Software
- Installation
- Maintenance



HARDWARE Solutions Drives

Choose from a wide selection of PowerFlex AC and DC variable frequency drives and Kinetix® servo drives that are all designed for flexibility, productivity, and ease of use.

- Low Voltage AC Drives
- Medium Voltage AC Drives
- DC Drive



Circuit and Load Protection products

Circuit and Load Protection products protect solenoids, relay coils, pilot devices, PLC outputs, and more. We offer electronic circuit protection modules, circuit breakers, and motor protectors including modular protection systems, bi-metallic or solid-state overload relays and surge protectors and filters.

Programmable Controllers

Allen-Bradley programmable logic controller (PLC) and programmable automation controller (PAC) range from large to small and even micro applications. They offer different controller types and sizes to fit your specific needs.

- Large Control Systems
- Small Control Systems
- Micro Control Systems
- Process Controller





Human Machine Interface

Visualization and HMI solutions help you address your productivity, innovation, and globalization needs. Our portfolio provides a consistent look and feel for electronic operator interface terminals, distributed client/server HMI, and information software.

- Graphic Terminals
- Tethered Operator Terminals



Industrial Computers & Monitors

Integrated display computers are available in multiple screen sizes, bezel types, resolutions, storage options and processor performance.

- Industrial Computers
- Hazardous Location Computers
- Industrial monitors
- Thin Clients
- Versa View products



Power supplies

Rockwell provide a wide variety of power supply solutions. From switched mode and industrial uninterruptible power supplies to transformers, every product is designed for reliability and dependable operation.



SOFTWARE

- FactoryTalk DesignSuite
- Studio 5000 Design Software

OTHERS

- Push Buttons and Signaling Devices
- Relays & Timers
- Sensors & Switches
- Safety Products
- Signal Interface
- Motor Control
- Input/output Modules
- Condition Monitoring
- Network Security & Infrastructure
- Energy Monitoring



Practical connections to meet your needs
we provide industry-focused product solutions

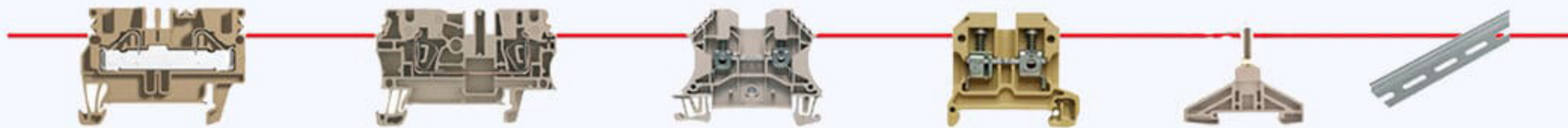
Be it automobile manufacturing, electricity production or water management—hardly any of today's industries can do without electronics and electrical connectivity. In this internationalised, changing world, the complexity of requirements is rapidly increasing due to the emergence of new markets. New, more varied challenges have to be overcome, and the solutions to them will not be found in high-tech products alone. The key lies in connecting power, signals and data, or demands and solutions. Creating these connections requires a profound insight into the needs of people and the challenges they face in their daily industrial connectivity tasks.

What would bring them a significant benefit?

What specific challenges do their industries face?

We ask ourselves these questions every day, and respond with strong product solutions, tailored to each industry.

Modular Terminals



Heavy-duty connectors

Housing Technology

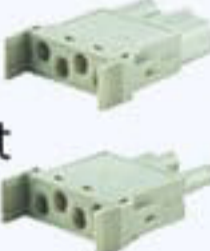
Professional Tools

Markets, Printers and Software

Standard insert



Modular system concept



Power Bus System

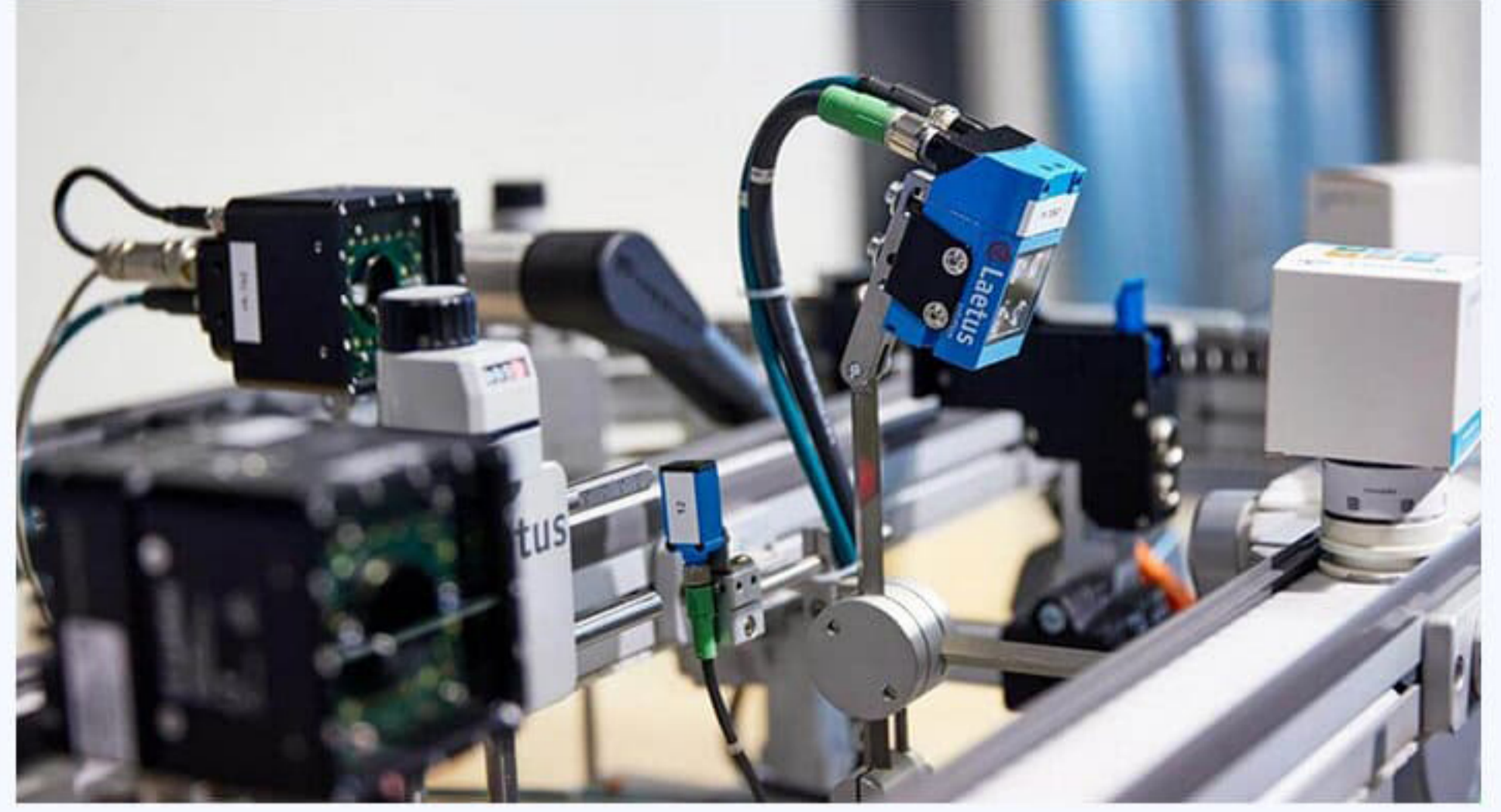




Sensor Intelligence.

SENSOR BASED INDUSTRIAL AUTOMATION, CONTROL AND PROTECTION

From factory automation to logistics automation and process automation, SICK's sensor solutions are keeping industry moving. As a technology and market leader, SICK provides sensor intelligence and application solutions that create the perfect basis for controlling processes securely and efficiently, protecting individuals from accidents, and preventing damage to the environment.



DETECTION SENSORS



DISTANCE SENSORS



SAFETY SENSORS



LiDAR and RADAR SENSORS



MACHINE VISION AND IDENTIFICATION



MOTION CONTROL SENSORS



PROCESS SENSORS



FLOW MEASUREMENT



ANALYZERS



NETWORK AND CONNECTION TECHNOLOGY



SYSTEM SOLUTION



DIGITAL SERVICES AND SOLUTIONS





ABB is a pioneer in industrial technology with over a century of experience. Our technological expertise and innovation keeps ABB at the forefront of industry advancements.

We proudly continue to serve our valued customers with premium products rooted in motion. And these products includes:

1. VFD drives (ACS355-03E and ACS580-01)
2. Low voltage, 3-phase AC induction motors (Foot and Flange mounted)

Our Key benefits are:

Energy Efficiency: ABB places a significant emphasis on energy efficiency. Our motors and drives are designed to consume less power while delivering high performance, offering users considerable cost savings over the long term.

Quality and Durability: Our IEC low voltage motors and drives are known for their quality and durability. They're built to withstand demanding conditions, which can lead to lower maintenance costs and a longer operational lifespan.

Industry-specific Solutions: We provides motors and Drives that are customized for various industries, including mining, food & beverage, cement, and many more. This means they're equipped to understand and cater to your specific requirements.

MOTORS:



M2BAX FOOT MOUNTED



M2BAX FLANGE MOUNTED

DRIVES:



ACS355-03E



ACS580-01

Calibration and Shop Services

Metrology and Calibration Solutions

The complete solution for automating and managing your calibration workload

MET/CALR calibration management software includes MET/CAL® Procedure Editor and Runtime for automated calibration; plus MET/TEAM® » software for calibration work flow and asset management.

The MET/CAL and MET/TEAM » suite of software provide you with all the tools you need to:

- Perform automated calibration on all kinds of test and measurement tools and equipment, including dc/lf, RF and microwave instruments.

- Create, edit, test, and document calibration procedures, quickly and easily. Configure and report a wider range of measurement uncertainty parameters and include verification data to provide an audit trail and support further analysis.

- Track asset information including work order history and status, traceability, users, customers, and location.

Electrical Calibration



Pressure Calibration



Temperature Calibration



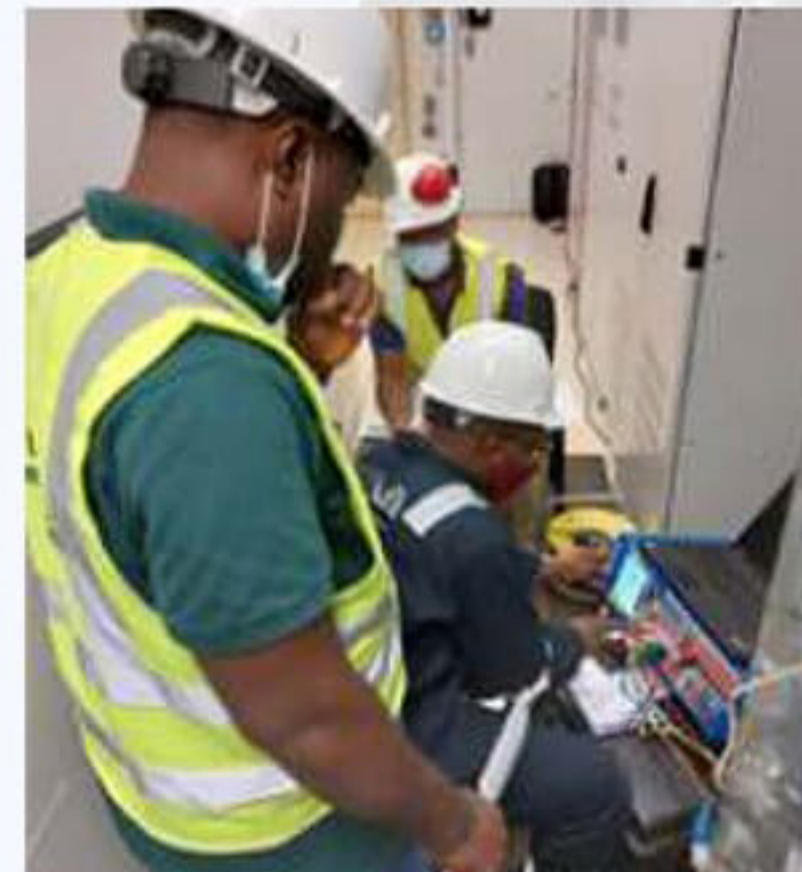
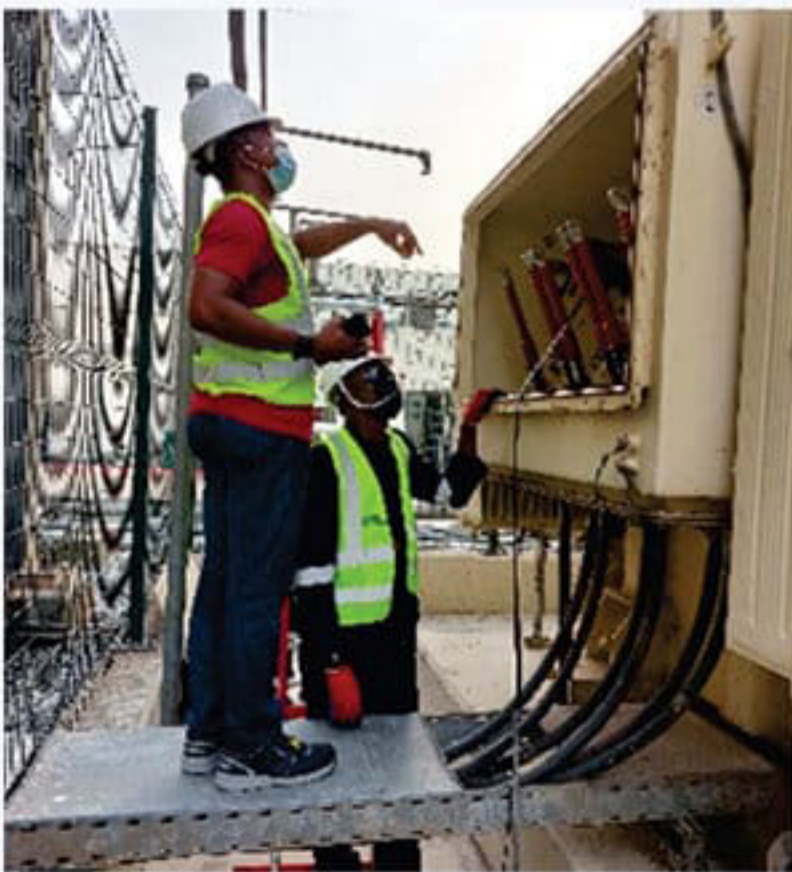
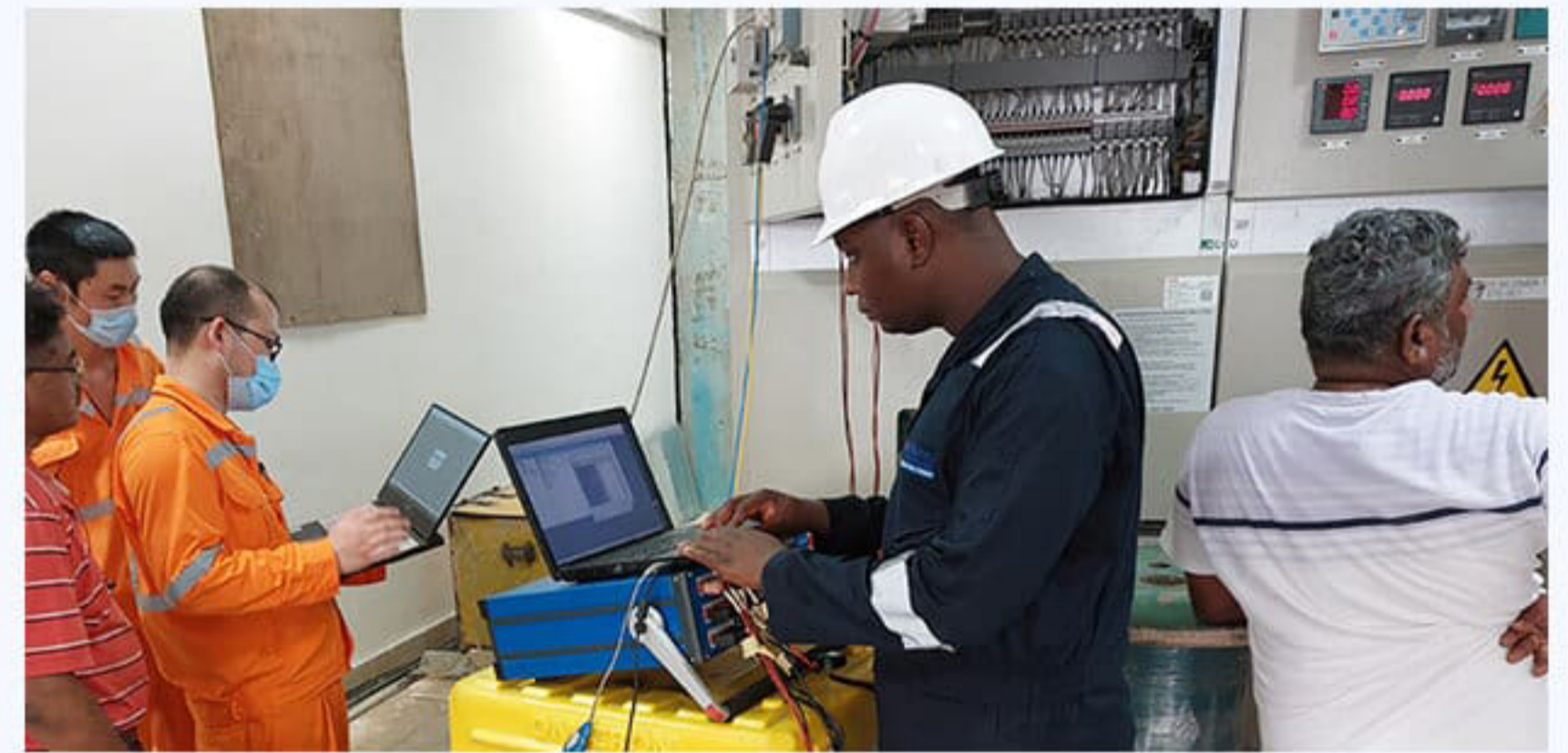
Electrical Testing Services



We provide technical and engineering services that help to ensure correct and safe operation of installed electrical equipment. We offer field testing, site audit and consulting services from our expert technical team.

Our services in the following

- LV & MV Cables acceptance and commissionTesting
- Cable fault location
- Substation testing and commissioning (transformers, Circuit breakers, Switchgears and panels)
- Infrared Thermography Surveys
- Protective Relay Testing
- Power Quality measurement and analysis



Powerpro Calibration

At PowerPro, we know what it means to have your test instruments serviced and calibrated,

That is why we offer traceable ISO 17025 approved calibration service that ensure your equipment continues to perform with long term accuracy and measurement excellence



Our instrument testing and calibration services covers most electrical testers, temperature, thermal imaging, dimensional, pressure and physical parameters etc. With us, you get to enjoy; Compliant & Traceable calibration with data for divers OEMS such as Fluke, Amprobe, Megger, Extech, AEMC, FLIR, Omega, B+K Precision, Ametek, Seaward, Hipotronics, Yokogawa etc.

- Saved time and cost associated with unplanned downtime
- Reduced turnaround time of calibration
- Access to personalized online and downloadable calibration certificate
- Free pickup and delivery for locations within Lagos

Equipment Rental

Powerpro equipment rental offers a wide inventory, user-friendly solutions, flexible rental terms, and quality customer support that differentiate us from our competitors.

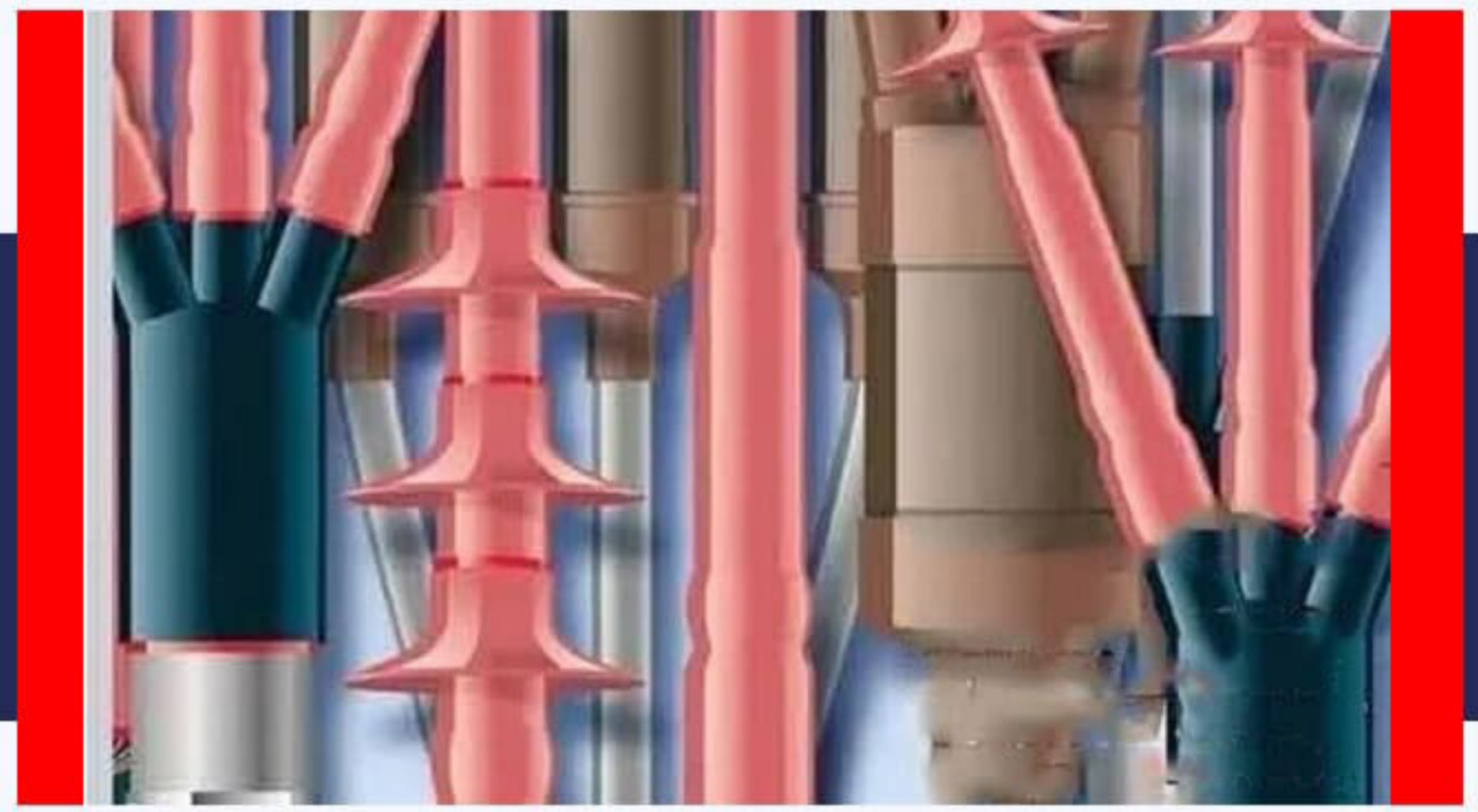
Our inventory covers most electrical test and measurements and we are always adding new test equipment to remain the industry's leading electrical test equipment rental provider:

Our Offering includes:

- Insulation Testers, Power Quality and energy loggers.
- Thermal images and Earth test tools[
- Substation commissioning Test sets: Omicron CPC 100
- Protective relays, circuit breaker and switch gears test set
- Insulating Oil test sets: [BDV,DGA etc]-GE
- Hipot Testers
- Transport X
- Cable Testers and fault locators-Baur viola, SysCompact 2000



Cable jointing & Termination Kit



Powerpro has been expanding her Power network maintenance over the years and are pleased to be your partner in RAYCHEM kits supplies

TE Connectivity\Raychem products have been synonymous with reliability in extreme environment and conditions. This family of products has been a global leader in material science, engineering, and manufacturing

We keep stock of Raychem kits for your quick, on-time maintenance and installation needs in the following range

Terminations - Medium Voltage Terminations Up to 42KV



Joints - Medium Voltage Joints - Up to 42KV



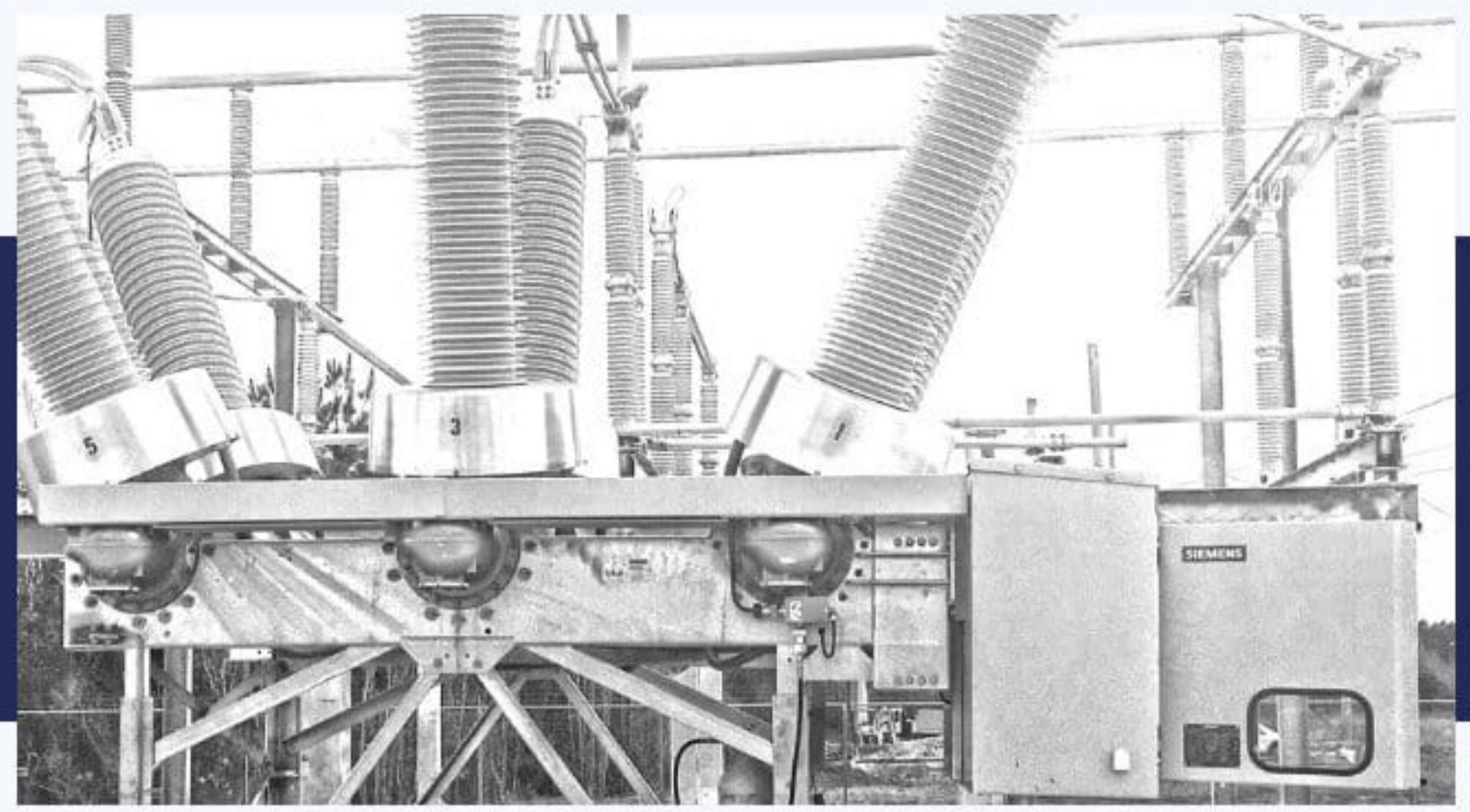
Insulating Covers, Tapes and Tubing



Switchgear Connections (Straight and Elbows)



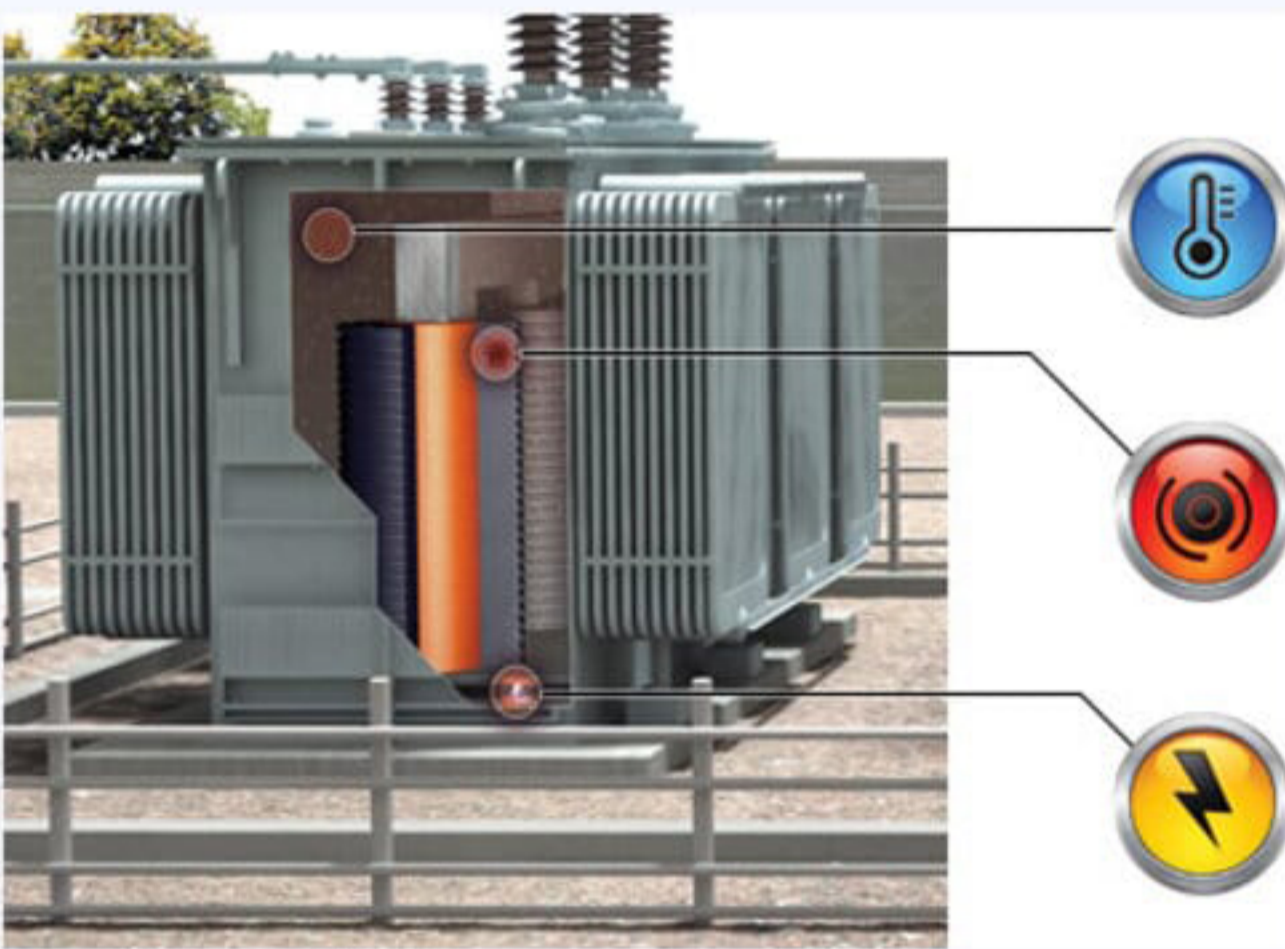
Substation monitoring automation & protection



Grid Solutions, a division of GE, is a major solutions provider and thought leader in the effort to modernize and optimize how energy is generated, moved and consumed.

They provide products and services that modernize the electrical grid.

PowerPro is a Value Added Reseller for GE Digital Energy with several years of experience in sales and field support.



Transformer ageing can be calculated so that expensive failure can be avoided

Gos analyzer classifies the fault types, providing valuable insights into the transformers condition.

Transformer faults are detected in their infancy, enabling fast remedial response



Multiple Gas Transformer DGA

GE'S kelman line of DGA devices enables precise on-line monitoring of transformer using multiple fault gas DGA and offers detailed diagnostics according to IEEE/IEC standard of any issue detected.



TRANSPORT X-A
Portable DGA



The Kelman DGA 900 i

Software and Onsite Services



GE Automation, Protection & Control



Digital Meters and Measurement



Substation Maintenance and Commissioning Test Solutions



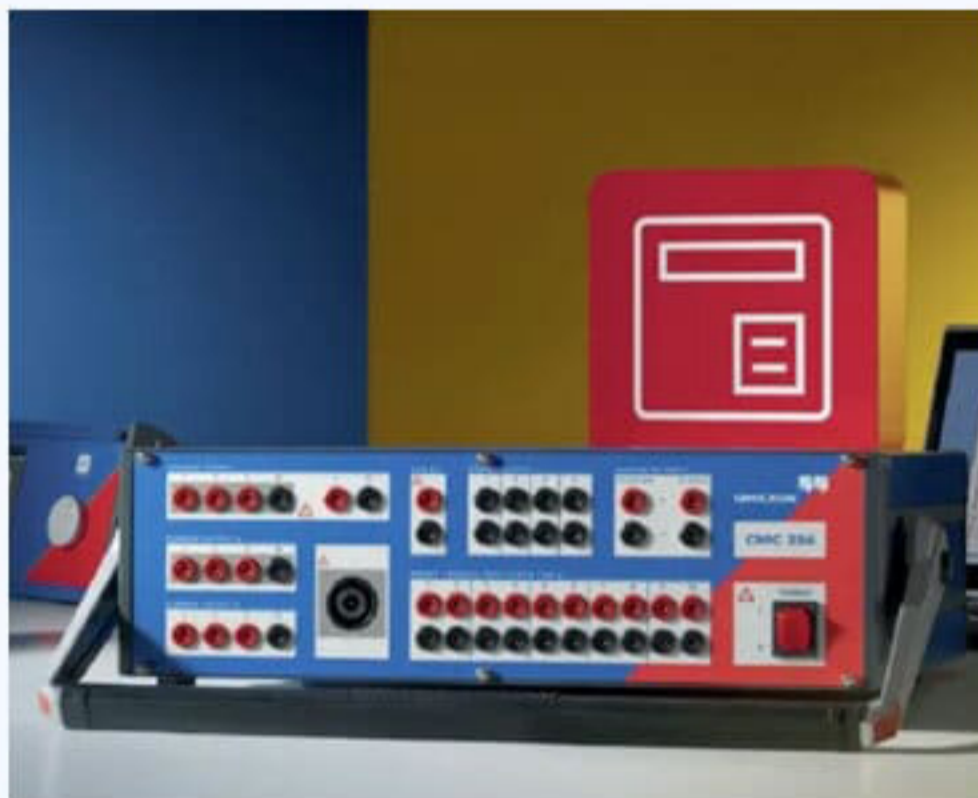
Substation Maintenance and Commissioning Test Solutions

Our Multifunction Test systems are effective for commissioning and maintenance test of Power Plants, Substations and most electrical equipment in LV, MV and HV ranges CPC 100 Multi-functional primary test system. The CPC 100 is the ideal test set for substation asset commissioning and maintenance. You can operate the CPC 100 via the integrated front panel, or by using the Primary Test Manager™ (PTM) software on your laptop. The powerful testing device provides up to 800 A or 2 kV (2 kA or 12 kV with accessories) with up to 5 KVA over a frequency range of 15 Hz to 400 Hz or 400 ADC. Using the CPC 100, electrical tests on various assets can be performed:

- Current transformers
- Voltage transformers
- Power transformers
- Power lines
- High-voltage (HV) cables
- Grounding systems
- Rotating machines
- GIS systems
- Switchgear and circuit breakers
- IEC 61850 installation
- Protection relays



CMC 356



CIBANO 500:
One device - three function



CT Analyzer



VOTANO 100



FRANEO 800



TESTRANO 600



Cable Testing and Fault Location Solutions



Cable Testing and Diagnostics

PowerPro specialises in the Sales of standard and custom designed HIPOT products suitable for Transformer, cables, and Motors. We are offering you cable test equipment from world leading manufacturer, BAUR located in Austria.

Our Range of products are known to give accurate information about the condition of cable and also for routes/ underground fault tracing. Our products also have competitive price edge over other brands.



Cable Testing Van and Fault Location System

Precise and quick cable fault location, testing and diagnostics of new and aged cable routes the BAUR cable test vans are fast and reliable for field operation. They ensure prompt restoration in a safe and efficient manner and are exactly adapted to individual requirements and cable networks



Cable fault location systems

Fault in cable systems should be detected quickly and precisely using pre-location and pin-pointing methods. To achieve this, BAUR offers robust, reliable, flexible devices that are equipped with the appropriate methods depending on the application.



Oil breakdown voltage Testing

Our range of oil breakdown voltage testers covers all standard voltages and are capable of performing manual and automatic tests to conform to ASTM D1816, ASTM D877, IEC 156, BS 146, VDE 0370 standards based



Inventive Electrical Solutions



At nVent, we believe safer systems ensure a more secure world. We connect and protect our customers with inventive electrical solutions. We design, manufacture, market, install and service high performance products and solutions for mission-critical equipment, buildings and essential processes. Our solutions are helping build a more sustainable and electrified world.

WHAT WE DO

We support data centers, industrial automation, commercial buildings, power utilities, renewable energy, infrastructure and energy storage applications around the globe.

WHAT WE OFFER

- Floor Standing Enclosures,
- Wall Mounted Enclosures,
- Terminal Boxes and many more.

SINGLE DOOR Floor standing Enclosure



DOUBLE DOOR Floor standing ENCLOSURE



Single Door Wall Mounted Enclosures



Double Door Wall Mounted Enclosures



Terminal box

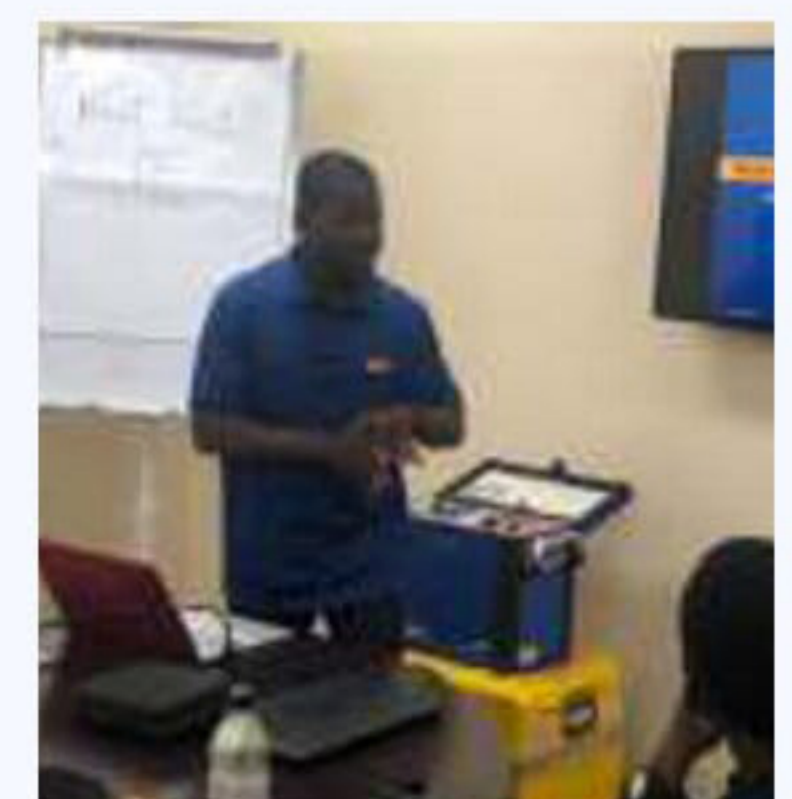
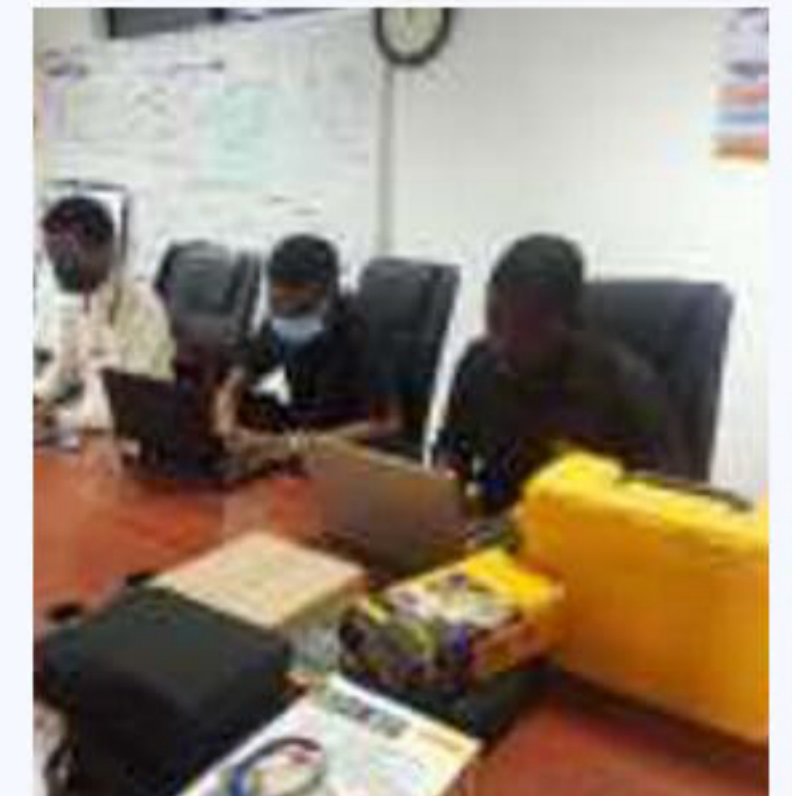
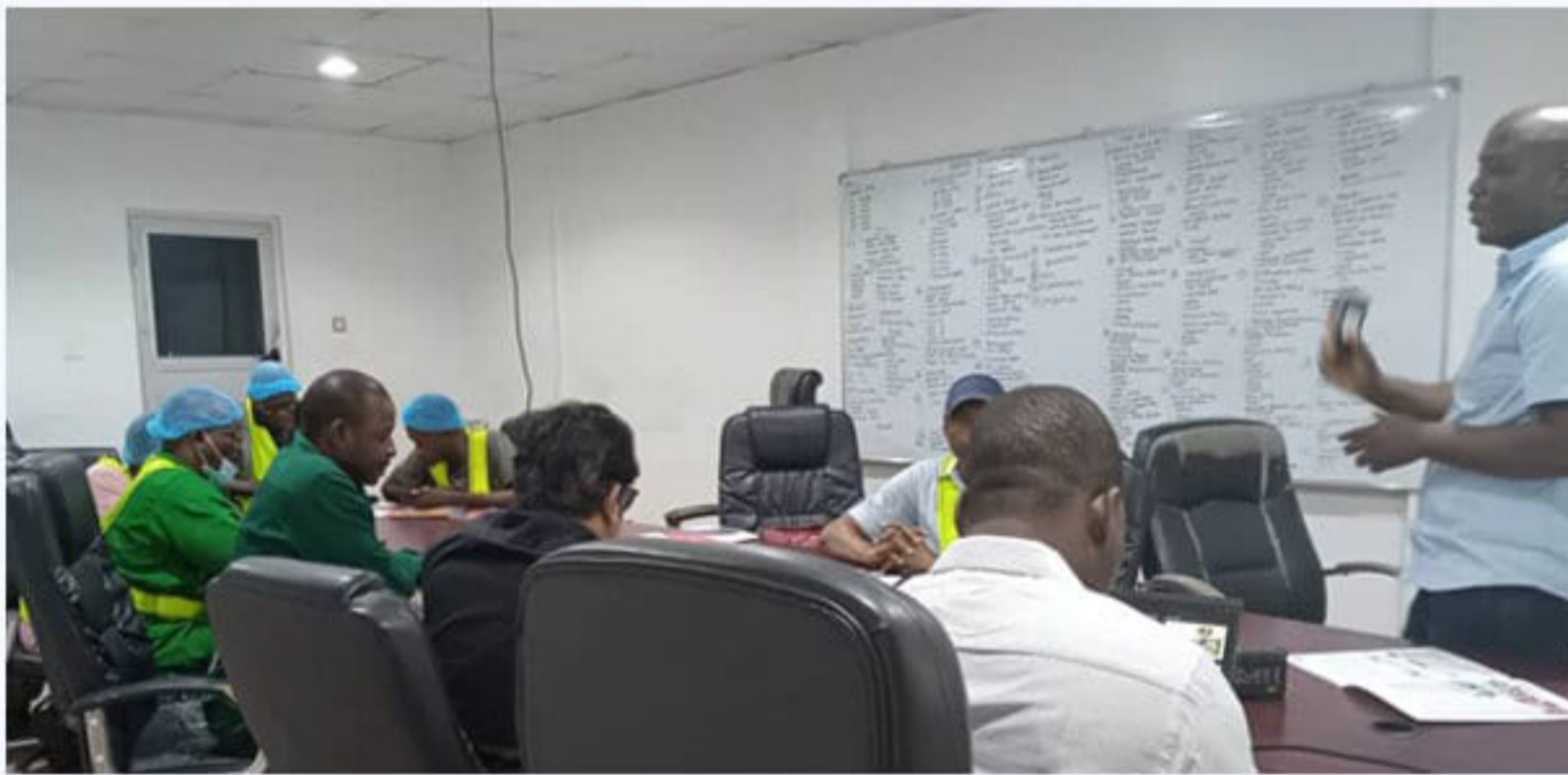


Powerpro Training Program



Our professional training course cover multiple levels ranging from fundamental through advanced topics. Our courses aim at providing introductory knowledge (for graduates) and in- depth knowledge for professionals,experienced engineers,technicians,supervisors and other personnel with good understanding of the bases of these courses. it also target development of Subject Matter Specialist within Nigeria and Africa.

With our new state-of-the-art facilities,we have invested tremendously in our course materials,time and experience aimed at easing knowledge transfer during our classes, with specific details to industrial applications. Our training materials are built from and in compliance with industrial leading standards such as ISA,NFFA,IEC,IEEE,etc. and we also use authorized industry videos to butteress our class lessons.



Technical Partners



Satisfied Customers





LAGOS (HEAD OFFICE)

23 Ladipo Oluwole Street,
Off Adeniyi Jones, Ikeja Lagos State.

PORT-HARCOURT (BRACH OFFICE)

Plot 36A, Trans Amadi Industrial Layout
Beside Weatherford, Off Motherkat
Roundabout P/H River State.



08185918133, 08185918075



sales@powerpro.ng



www.powerpro.ng