



Seating the Way You Want It™

<b>WOVEN PATTERNS</b>	<b>GRADE</b>	<b>VINYL PATTERNS</b>	<b>GRADE</b>
Adler	3	Chambray	5
Archetype	2	Impression	5
Clarity	4	Kaleidoscope	6
Connelly	2	Linette	3
Couture	3	Patriot Plus	3
Dorset	2	Silververtex	5
Evoke	3	Twist	4
Open House	2	Whisper	4
Phrase	3		
		<b>POLYURETHANE PATTERNS</b>	<b>GRADE</b>
		Castillo	3
		Dillon	2

**OPEN HOUSE | 100% RECYCLED | GRADE 2**



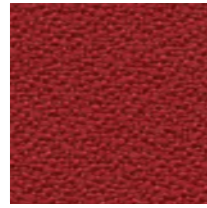
BLACK



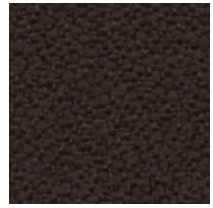
NAVY



BIRCH



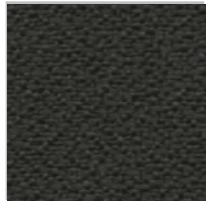
RED DELICIOUS



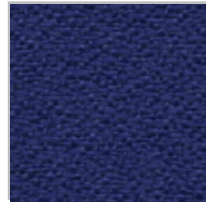
COFFEE BEAN



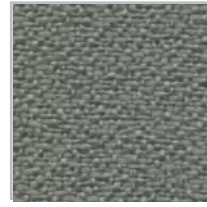
GREEN APPLE



GRAPHITE



COBALT

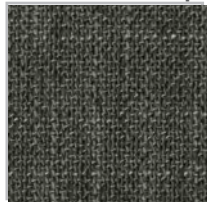


ASTEROID



WINE

**ARCHETYPE | i-CLEAN | GRADE 2**



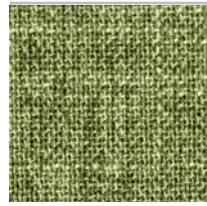
SMOKE



CAFÉ



ADMIRAL



HERBAL

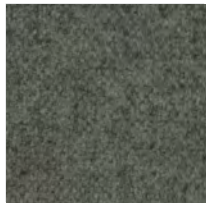


SILT

**DORSET | i-CLEAN | GRADE 2**



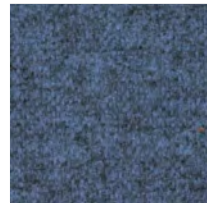
BLACK



CHARCOAL



ASH

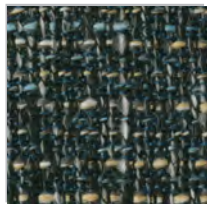


BLUEBERRY

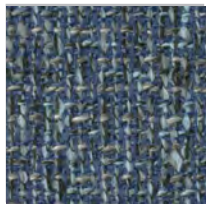


CHERRY

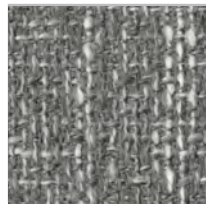
**CONNELLY | i-CLEAN | GRADE 2**



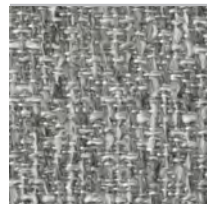
CROW



BLUE JAY



OWL



DOVE



WREN

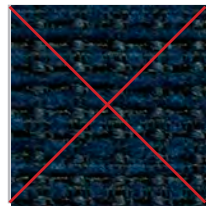
**EVOKE | DISCONTINUED**



NOIR



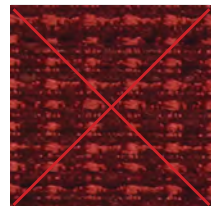
GREY MIST



PACIFIC

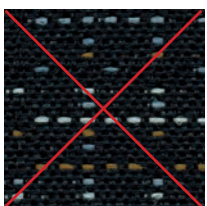


PEAR

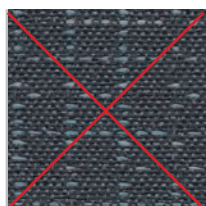


CERISE

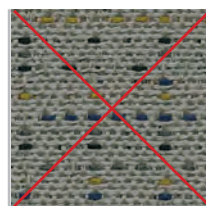
**COUTURE | DISCONTINUED**



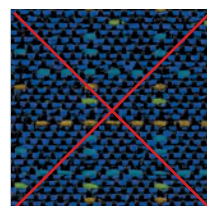
SEAM



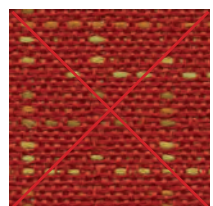
SHEARS



THIMBLE



TAILOR

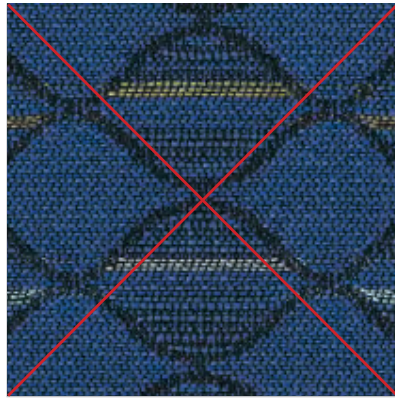


BASTING

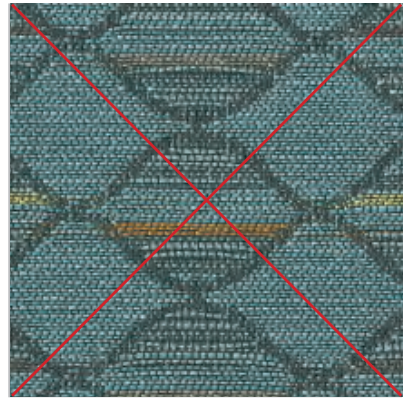
**CLARITY | DISCONTINUED**



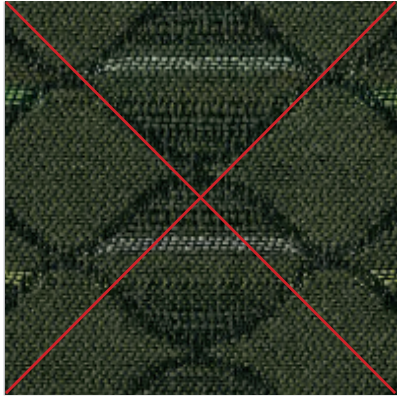
IRON



COBALT



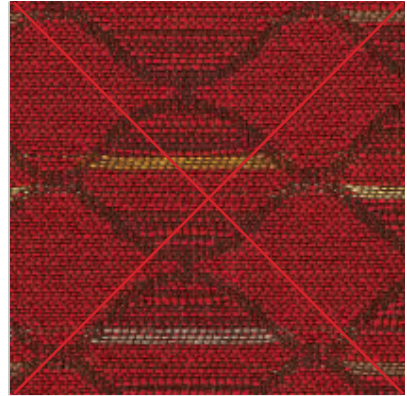
SERENE



VERDIGRIS



ARGENT



RUBY

**ADLER | TEFLON | GRADE 3**



NOCTURNAL



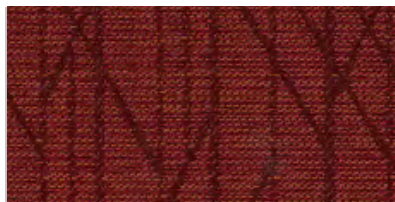
MIDNIGHT SKY



PEPPERCORN



GREY FLANNEL



CALIENTE



GOLDEN

**ECHO | DISCONTINUED**



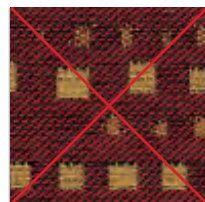
PEPPERCORN



CABOCHON



SEAPORT



HENNA



GOLD

**PHRASE | 100% RECYCLED | GRADE 3**



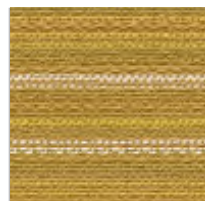
SHALE



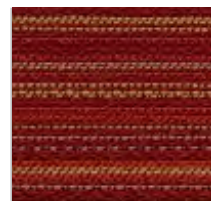
TRUFFLE



MARINE



MAIZE

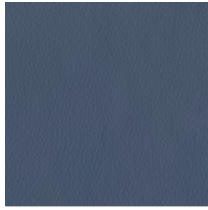


CAYENNE

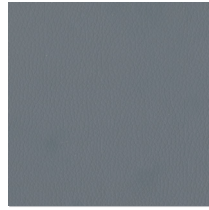
**DILLON | POLYURETHANE | GRADE 2**



BLACK



OCEAN



WILLIAMSBURG



LUCID



BUFF



GRAPHITE



JAVA



SAGE

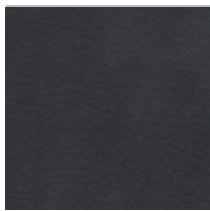


APPLE GREEN



CORDOVAN

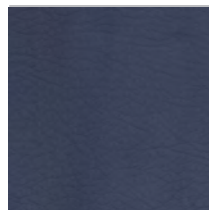
**WHISPER | VINYL | GRADE 4**



BLACK



CHARCOAL



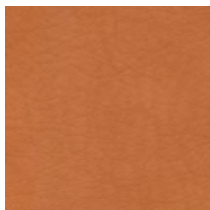
NAVY



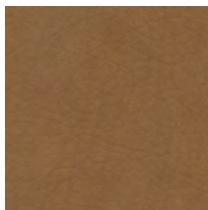
INDIGO



FOREST



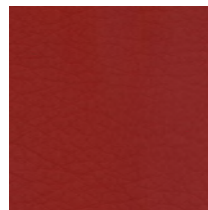
LUGGAGE



CAPPUCCINO



SASSAFRAS



BORDEAUX



SALSA

**PATRIOT PLUS | VINYL | GRADE 3**



BLACK



CHARCOAL



IMPERIAL BLUE

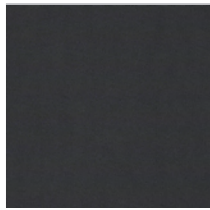


BORDEAUX



CONCRETE

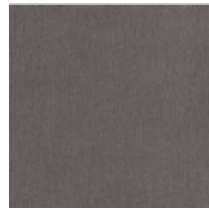
**SILVERTEX | VINYL | GRADE 5**



CARBON



SAPPHIRE



METEOR

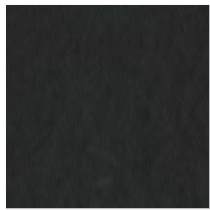


CELERY



POPPY

**CASTILLO | POLYURETHANE | GRADE 3**



BLACK



BATIK



METAL



QUARRY



RED

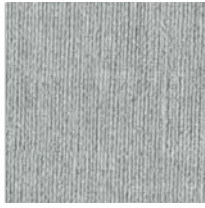
**LINETTE | VINYL | GRADE 3**



BLACK



DENIM



ASH



STONE



TOFFEE

**TWIST | PVC | GRADE 4**



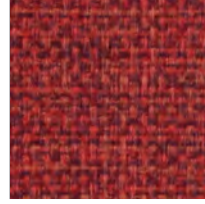
FLANNEL



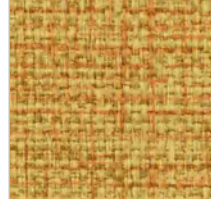
GAUZE



INDIGO



CADMIUM



RAFFIA

**CHAMBRAY | VINYL | GRADE 5**



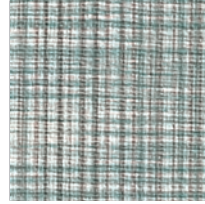
GREY



LIGHT NAVY



AQUAMARINE

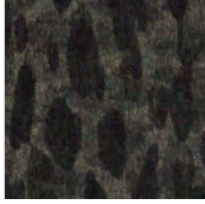


SEAFOAM

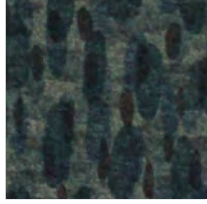


LIMESTONE

**IMPRESSION | PVC | GRADE 5**



ASH



TENEBRIS



VITREOUS



COWRIE



OCHRE

**KALEIDOSCOPE | VINYL | GRADE 6**



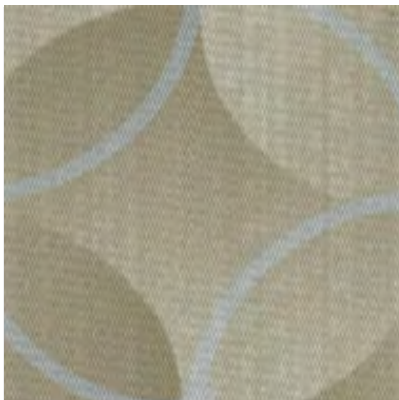
SAFFRON



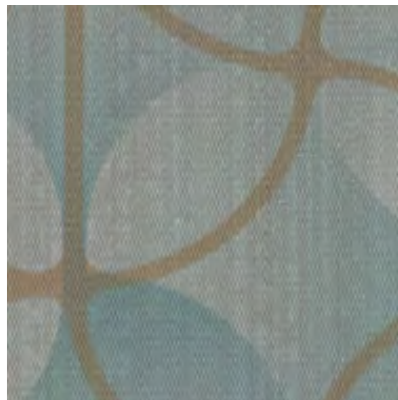
CITRON



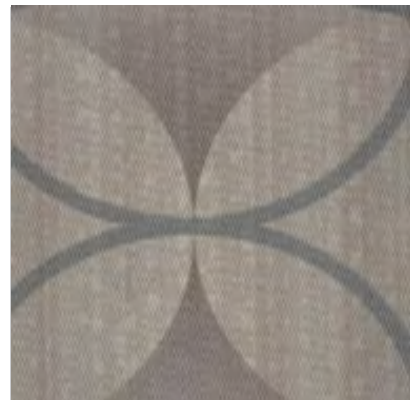
BRONZE



MARSH



FOAM



SMOKEHOUSE

# Technical Information

## Express Selections - Woven

Pattern	Fiber Content & Backing	Finish	Approx. Repeats	Abrasion (D.R.)	Lightfastness	Flammability*	Cleaning Code
ADLER	100% Polyester Acrylic Backing	Teflon®	5.75" V, 4.625" H	50,000	60 Hrs. Grade 4.5	CAL TB 117-2013 NFPA 260	WS
ARCHETYPE	79% Polyester, 21% Rayon 100% Polyester Non-Woven Scrim Backing	i-clean™	(none)	75,000	40 Hrs. Grade 4	CAL TB 117-2013 NFPA 260 Class I UFAC Class I	W
CLARITY	63% Post Consumer Recycled Polyester, 37% Antimony-Free Polyester Crypton® Green Moisture Barrier Backing	Crypton® Green Stain Resistance Crypton® Green Odor Resistance	3.75" V, 5.4" H	100,000	40 Hrs. Grade 4	CAL TB 117-2013 NFPA 260 Class I	W
CONNELLY	100% Polyester Synthetic Latex Blend Backing	i-clean™	(none)	95,000	40 Hrs. Grade 4	CAL TB 117-2013 NFPA 260 Class I UFAC Class I	W
COUTURE	57% Post Consumer Recycled Polyester, 25% Pre Consumer Recycled Polyester, 18% Polyester Acrylic Backing	Stain Resistant	14.5" V, 14" H	100,000	40 Hrs. Grade 4	CAL TB 117-2013 NFPA 260 Class I	WS
DORSET	100% Polyester 100% Polyester Backing	i-clean™	(none)	55,000	40 Hrs. Grade 4	CAL TB 117-2013 NFPA 260 Class I UFAC Class I	W
ECHO	100% Pre Consumer Recycled Polyester	Polyester Binder	11.25" V, 6.75" H	100,000	40 Hrs. Grade 4	CAL TB 117-2013 NFPA 260 Class I	WS
EVOKE	24% Post Consumer Recycled Polyester, 29% Pre Consumer Recycled Polyester, 47% Polyester Acrylic Backing	(none)	.375" V, .1875" H	100,000	40 Hrs. Grade 4	CAL TB 117-2013 NFPA 260 Class I	WS
OPEN HOUSE	35% Post Consumer Recycled Polyester, 65% Pre Consumer Recycled Polyester	(none)	(none)	250,000	40 Hrs. Grade 4	CAL TB 117-2013 NFPA 260 Class I	WS
PHRASE	100% Post Consumer Recycled Polyester	(none)	1.1875" V	100,000	40 Hrs. Grade 4	CAL TB 117-2013 NFPA 260 Class I	WS

\*This term and any corresponding data refer to typical performance in the tests indicated and should not be construed to imply the behavior of this or any other material under actual fire conditions.

**CAL TB 133\*** This term and any corresponding data refer to typical performance in the tests indicated and should not be construed to imply the behavior of this or any other material under actual fire conditions. These patterns can be approved for California Technical Bulletin 133 use when used in conjunction with other suitable components. **Additional charges will apply.** Please contact Lesro customer service for additional information.

### Cleaning Code Definitions

W: Water-based cleaning agents or foam may be used.

WS: Clean with water-based cleaning agents, foam or pure, water-free solvents. Vacuuming or light brushing is recommended to prevent dust and soil build up.

**For further cleaning and care instructions, please visit our website.**

**California Prop 65 and other regulatory compliance information can be found on our website for all Lesro products and upholsteries.**



Seating the Way You Want It™

# Technical Information

## Express Selections - Vinyls & Polyurethanes

Pattern	Fiber Content & Backing	Finish	Approx. Repeats	Abrasion (D.R.)	Flammability*	Special Properties
CASTILLO	100% Polyurethane 87% Polyester, 13% Cotton Backing	Antimicrobial i-clean™	(none)	200,000	CAL TB 117-2013 NFPA 260 UFAC Class I	PVC Free
CHAMBRAY	100% Vinyl Urethane Topcoat, Hi-Loft <sup>2</sup> ™ Backing	PBG+® Silverguard®	18" V x 18" H	100,000	CAL TB 117-2013 NFPA 260 UFAC Class I	Antibacterial, Antifungal, Formaldehyde Free, Mildew Resistant, No Heavy Metals, Stain Resistant
DILLON	100% Polyurethane 70% Polyester, 30% Cotton Backing	Antimicrobial	(none)	200,000	CAL TB 117-2013 NFPA 260 UFAC Class I	PVC Free
IMPRESSION	100% Phthalate Free PVC 100% Polyester Backing	Resilience <sup>SR</sup>	(none)	250,000	CAL TB 117-2013 NFPA 260 UFAC Class I	Formaldehyde Free, Lead Free, Phthalate Free
KALEIDOSCOPE	100% Vinyl Urethane Topcoat, Hi-Loft <sup>2</sup> ™ Backing	PBG+® Silverguard®	18" V x 18" H	100,000	CAL TB 117-2013 NFPA 260 UFAC Class I	Antibacterial, Antifungal, Formaldehyde Free, Mildew Resistant, No Heavy Metals, Stain Resistant
LINETTE	100% Vinyl 100% Polyester Backing	Antimicrobial i-clean™	(none)	100,000	CAL TB 117-2013 NFPA 260 UFAC Class I	
PATRIOT PLUS	100% Vinyl Urethane Topcoat, 65% Polyester, 35% Cotton Backing	Permablok <sup>3</sup> ®	(none)	100,000	CAL TB 117-2013 NFPA 260 UFAC Class I	Antibacterial, Antifungal, Formaldehyde Free, Mildew Resistant, No Heavy Metals, Stain Resistant
SILVERTEX	100% Vinyl Urethane Topcoat, Hi-Loft <sup>2</sup> ™ Backing	Permablok <sup>3</sup> ® Silverguard®	(none)	100,000	CAL TB 117-2013 NFPA 260 UFAC Class I	Antibacterial, Antifungal, Formaldehyde Free, Mildew Resistant, No Heavy Metals, Stain Resistant
TWIST	100% PVC 100% Brushed Polyester Knit Backing	Resilience <sup>SR</sup>	(none)	250,000	CAL TB 117-2013 NFPA 260 UFAC Class I	Formaldehyde Free, Lead Free, Phthalate Free
WHISPER	100% Vinyl Urethane Topcoat, Hi-Loft <sup>2</sup> ™ Backing	Napa	(none)	100,000	CAL TB 117-2013 NFPA 260 UFAC Class I	Antibacterial, Antifungal, Formaldehyde Free, Mildew Resistant, No Heavy Metals, Stain Resistant

\*This term and any corresponding data refer to typical performance in the tests indicated and should not be construed to imply the behavior of this or any other material under actual fire conditions.

**CAL TB 133\*** This term and any corresponding data refer to typical performance in the tests indicated and should not be construed to imply the behavior of this or any other material under actual fire conditions. These patterns can be approved for California Technical Bulletin 133 use when used in conjunction with other suitable components. **Additional charges will apply.** Please contact Lesro customer service for additional information.

### Care and Cleaning Instructions:

For easy cleaning of recent soiling, promptly wash with a mild soap solution. For a previously soiled area that has not yet penetrated the surface, scrub with a soft brush using a mild, non-abrasive cleaner. Cleaning frequency depends on use. Please clean and maintain your furniture regularly.

Clean all stains as quickly as possible and use the following cleaning procedure for the best results.

- Step 1:** Remove any excess spills with a damp cloth. Clean with a mild liquid soap and water mixture. Rinse with clear water and dry.
- Step 2:** Use a straight application of concentrated cleaners such as Formula 409® or Fantastik®. Rinse with clear water. Wipe with a clean cloth.
- Step 3:** For more difficult stains, use a 10% mixture of bleach with water. Rinse with clear water and dry. Never use bleach in full strength to clean material.

**Recommendation:** Please be sure to use a soft brush or cloth saturated with cleaning material. Always test cleaning methods on an inconspicuous area of the furniture. If stain persists, the stain probably has set. Although these materials are resistant to most common stains, some fabric dyes and ballpoint inks can create a permanent stain.

**Caution:** This information is not a guarantee and does not relieve the user from the responsibility of the proper and safe use of these materials and all cleaning agents.

For further cleaning and care instructions, please visit our website.

**California Prop 65 and other regulatory compliance information can be found on our website for all Lesro products and upholsteries.**



Seating the Way You Want It™

---

*Express Upholstery Selections are stocked at Lesro and available for orders requiring fast delivery upon request. Products with mixed Express Upholstery Selections are also available for fast delivery.*

*Turn to Lesro's Express Upholstery Selections for all your time-critical orders.*



Seating the Way You Want It™



Express Selections™



American Built™



Pain-Free Pledge™