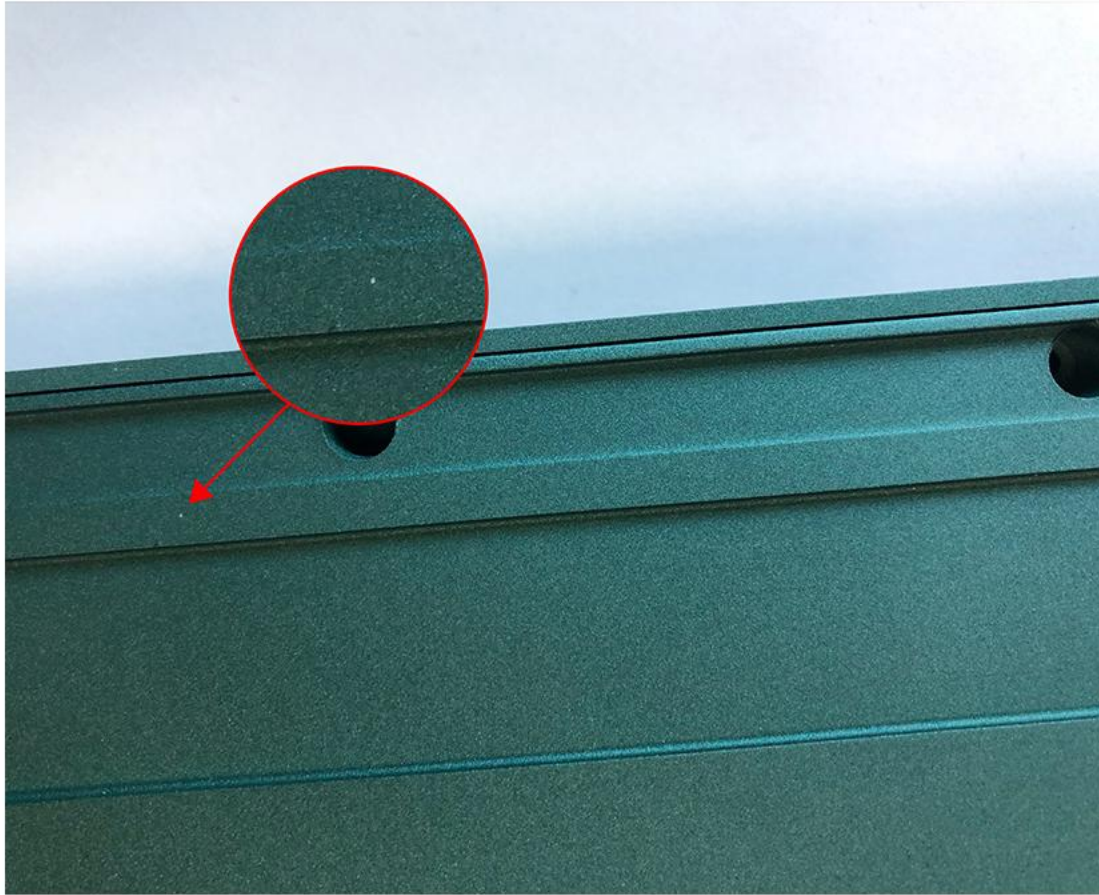
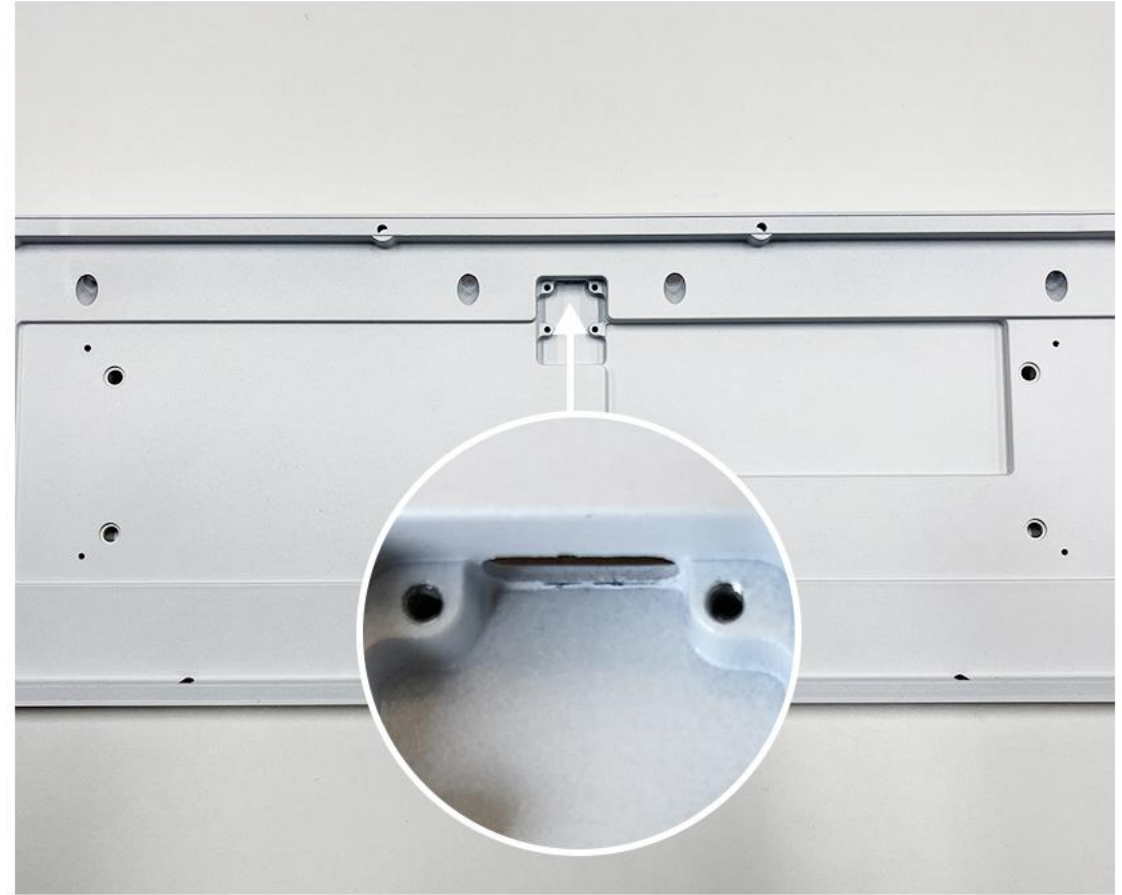


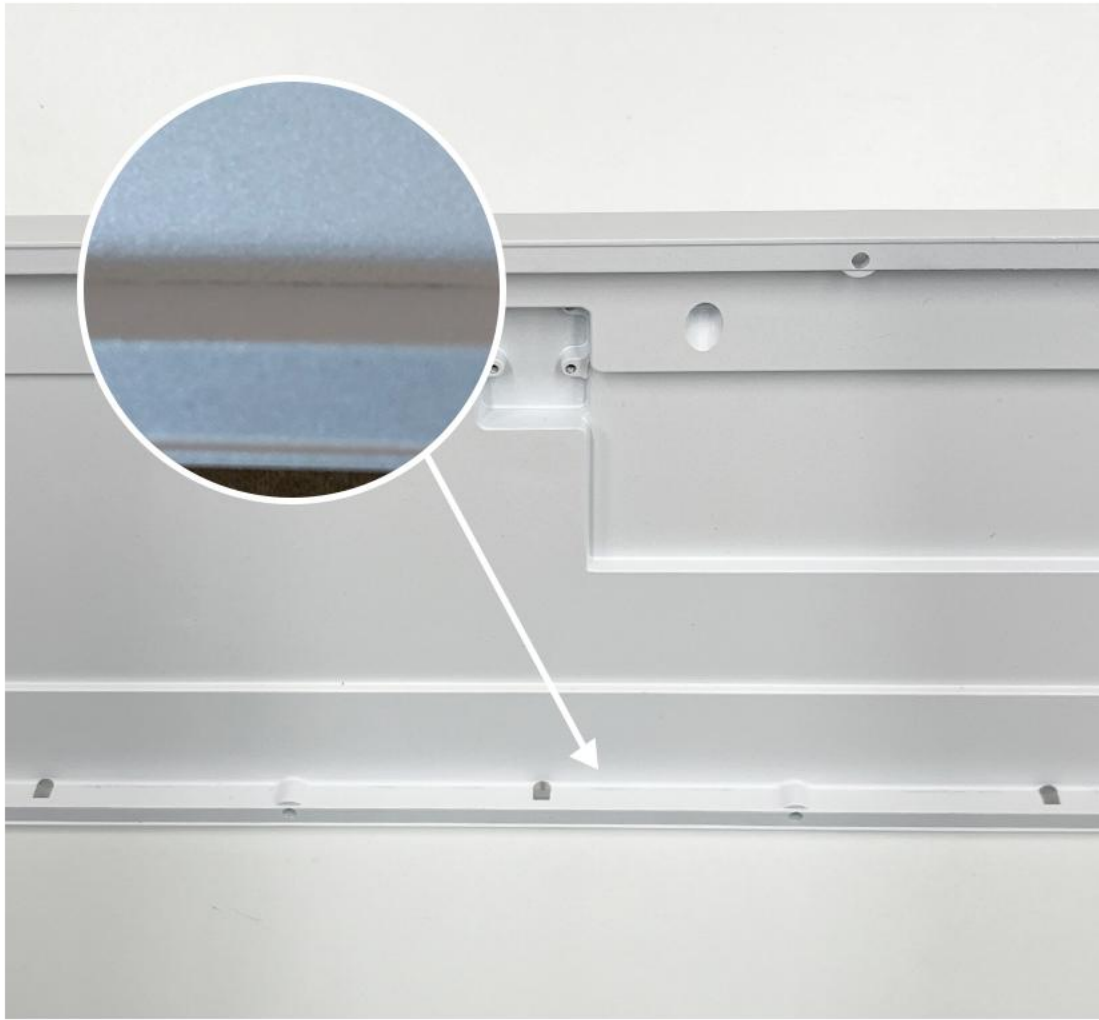
ZOOM TKL uses nano-coating technology. Due to the technological properties of nano-coatings, there may be minor, unavoidable dust spots on the case surface. Small dust points and micro scratches are only visible at a particular angle. Dust spots in the case of a visual distance of 30cm, dot size <math><0.1\text{mm}</math>, and the whole surface is not more than 2 spots are not covered in the after-sales service.



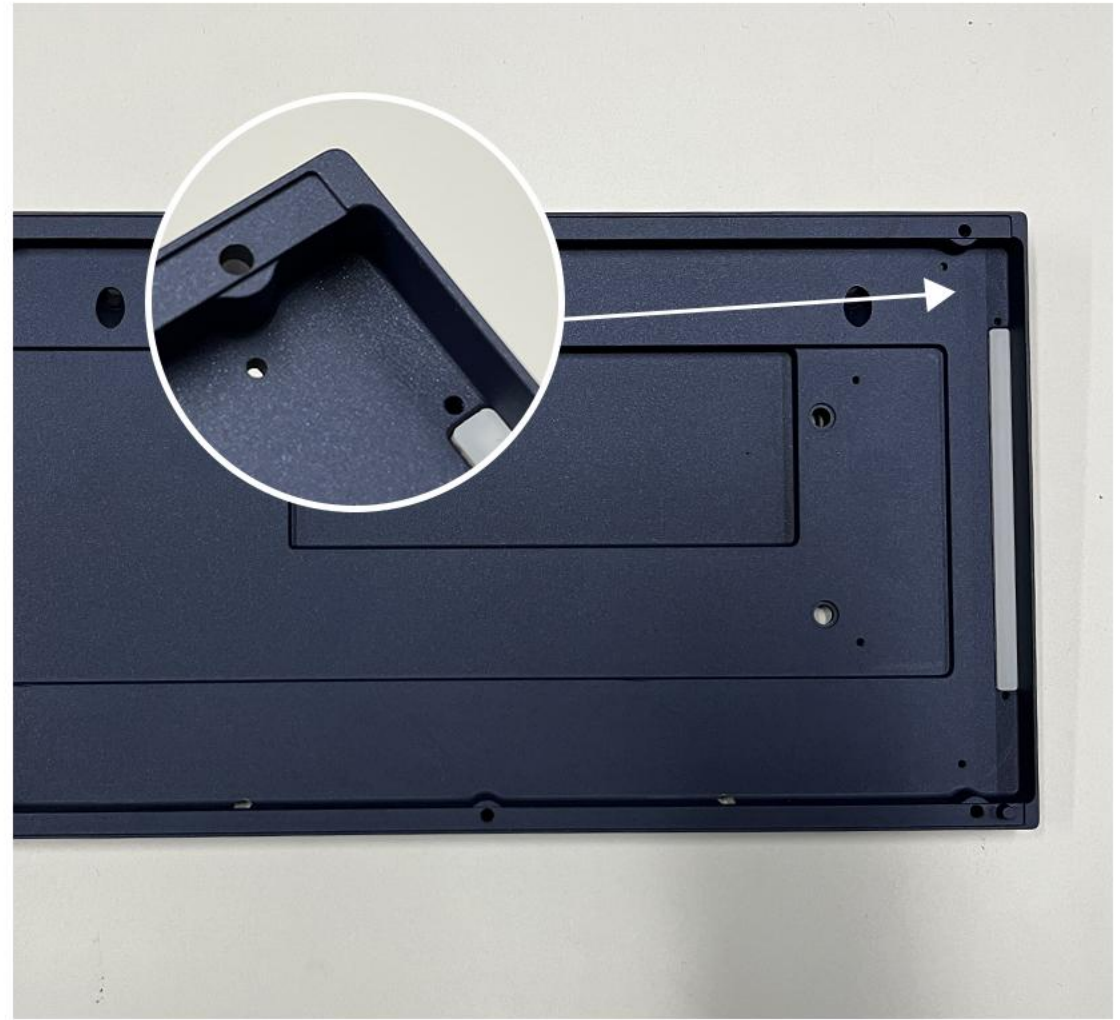
1. This is an example of a minor dust spot.



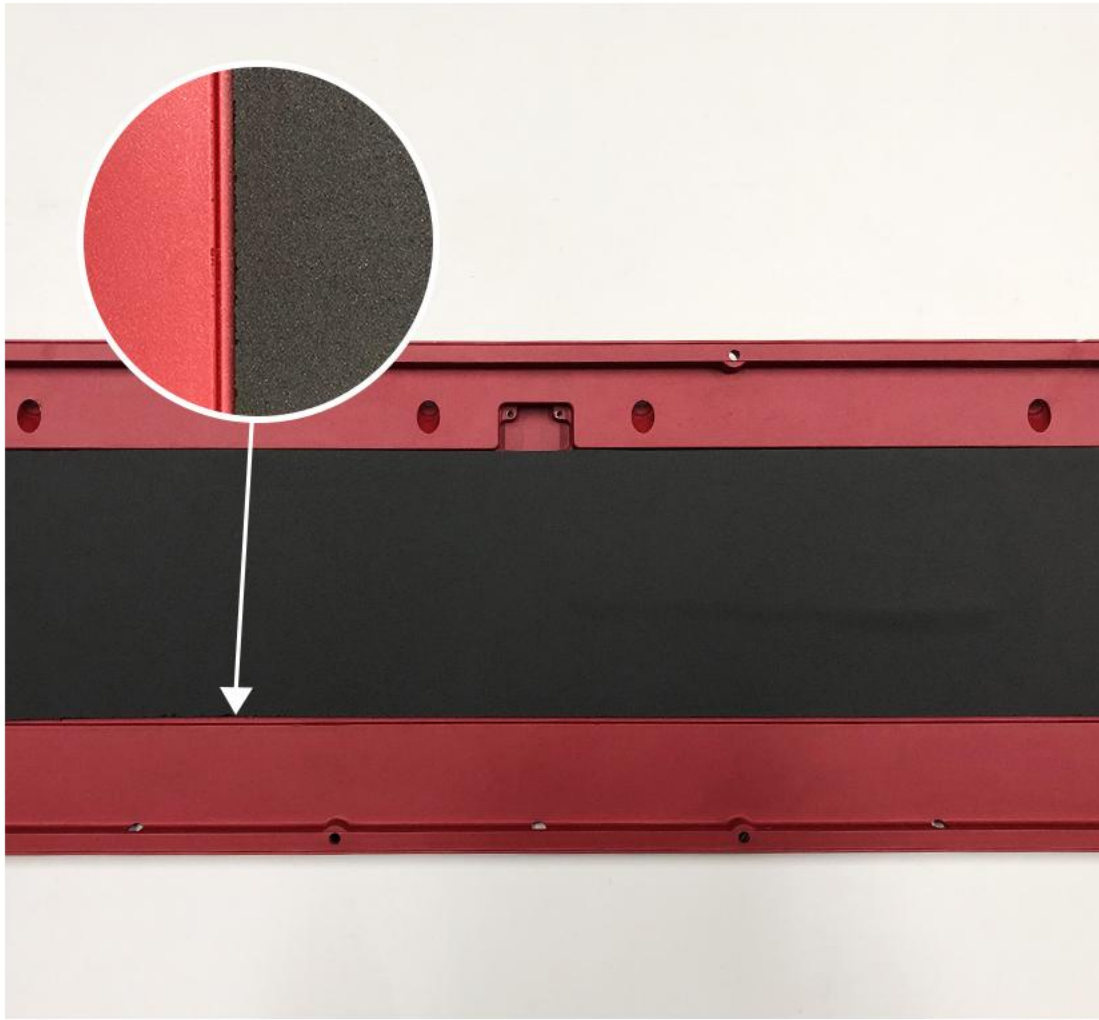
2. As the separation daughterboard will be installed in advance, there may be slight scratches and paint shedding at the internal C-port, which will not be shown after the daughterboard is installed.



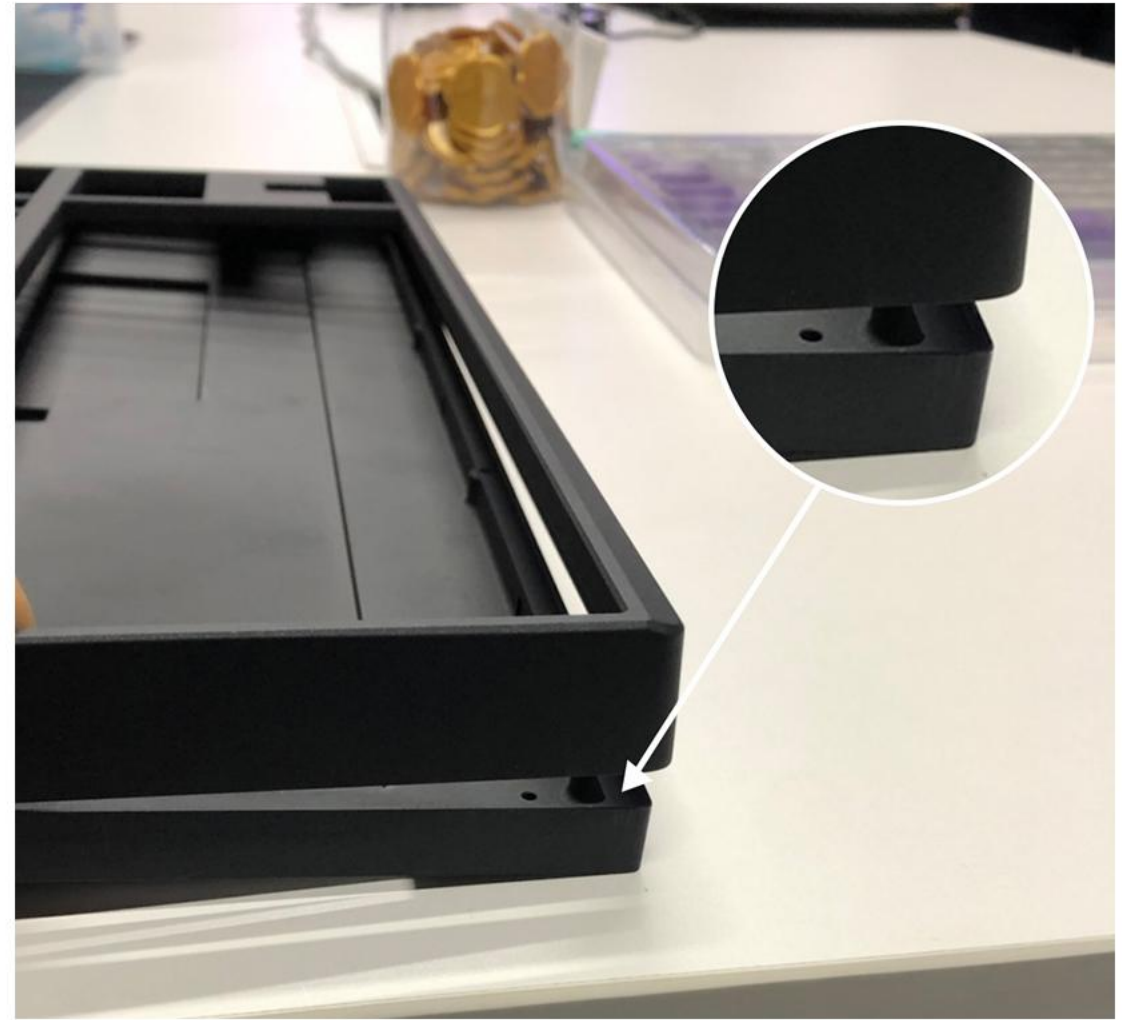
3. Due to the special spraying technology, there may be a little uneven spraying at the corner of the bottom case, which will not be affected after installation.



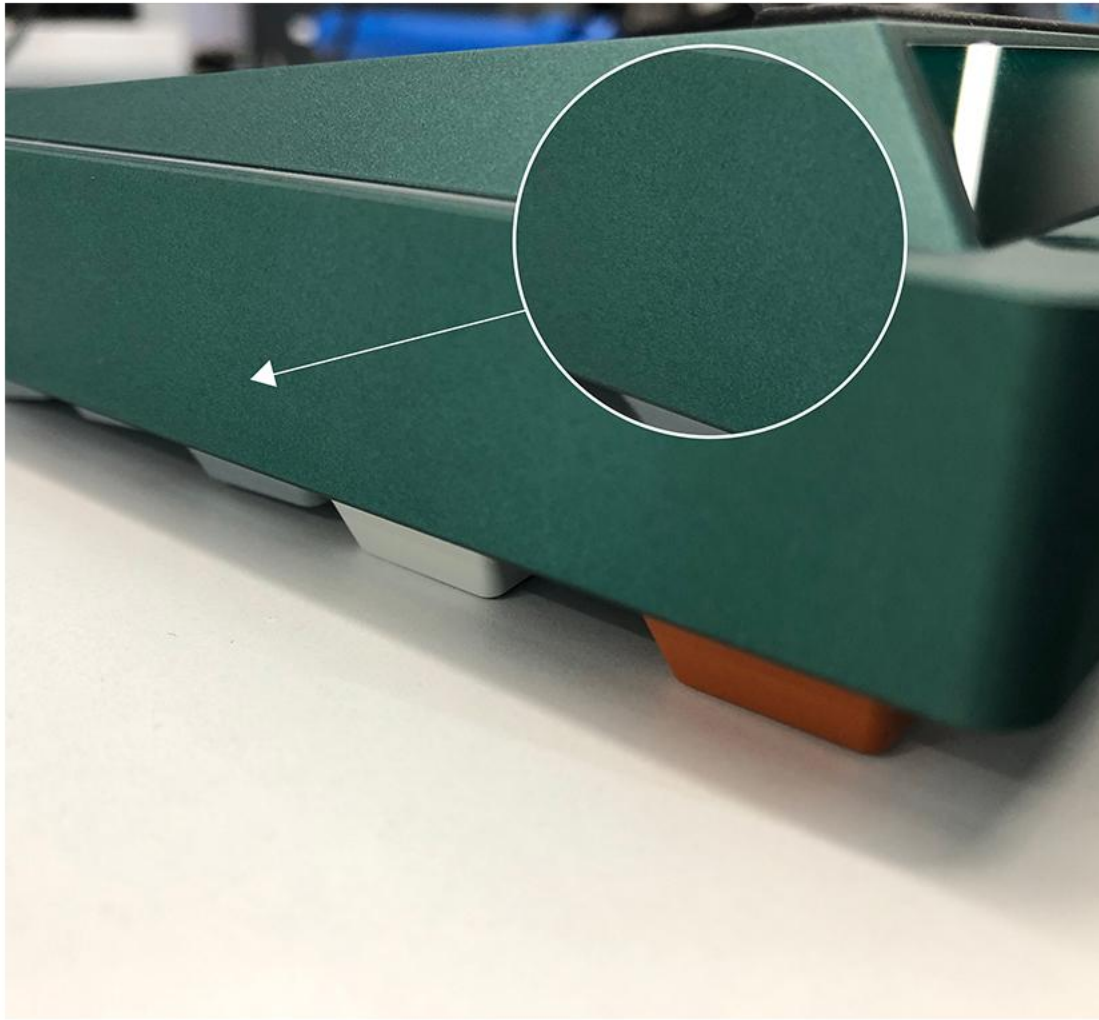
4. Due to the nature of CNC machining, the interior of the top and bottom case may have slight, inevitable processing knife marks/minor scratches, the invisible processing knife lines/scratches after the keyboard is fully assembled will not affect the aesthetics, which is within the range of our quality acceptance.



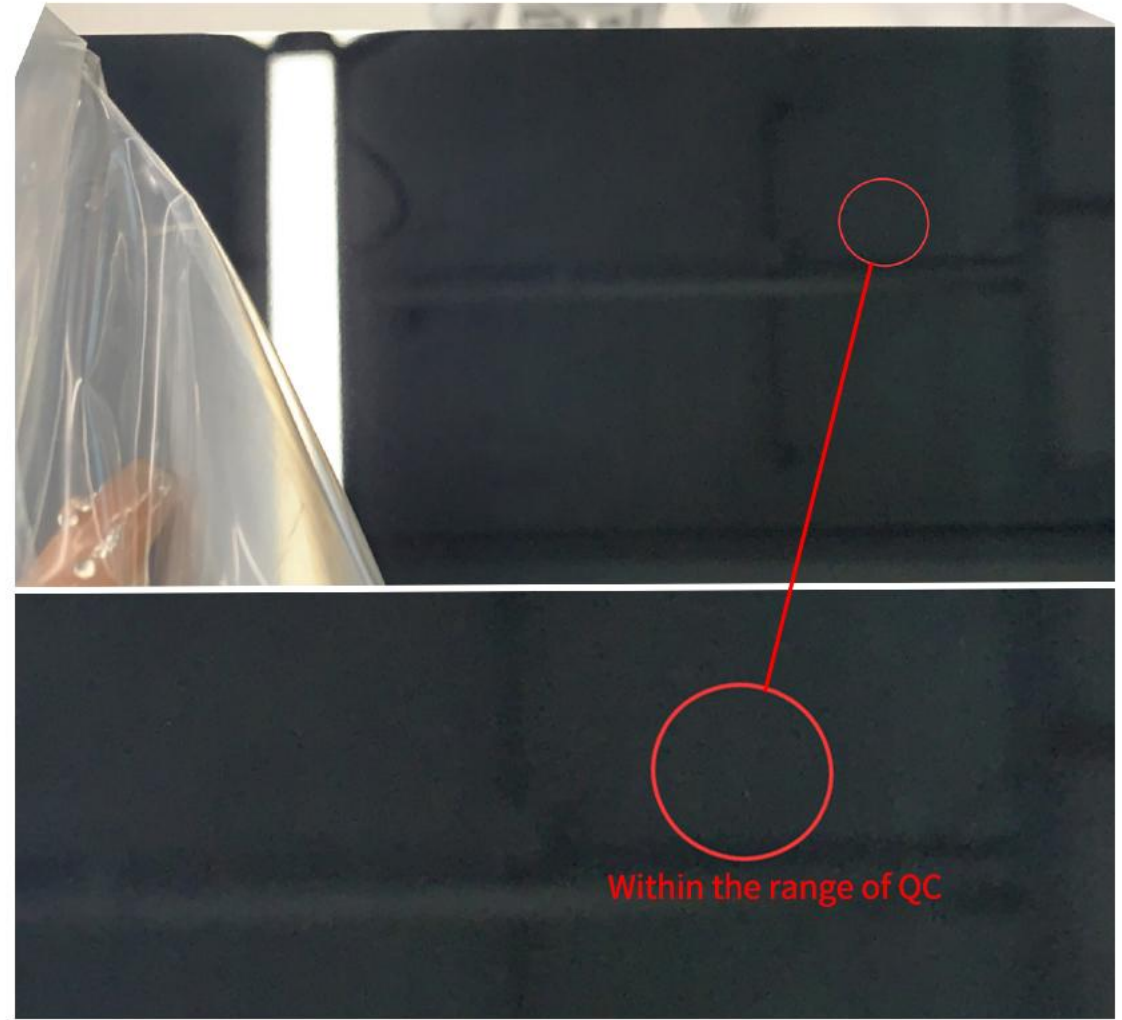
5. There may be a slight unevenness in the interior of the bottom case and at the cutting edge of the corner. It has to be magnified many times to see it.



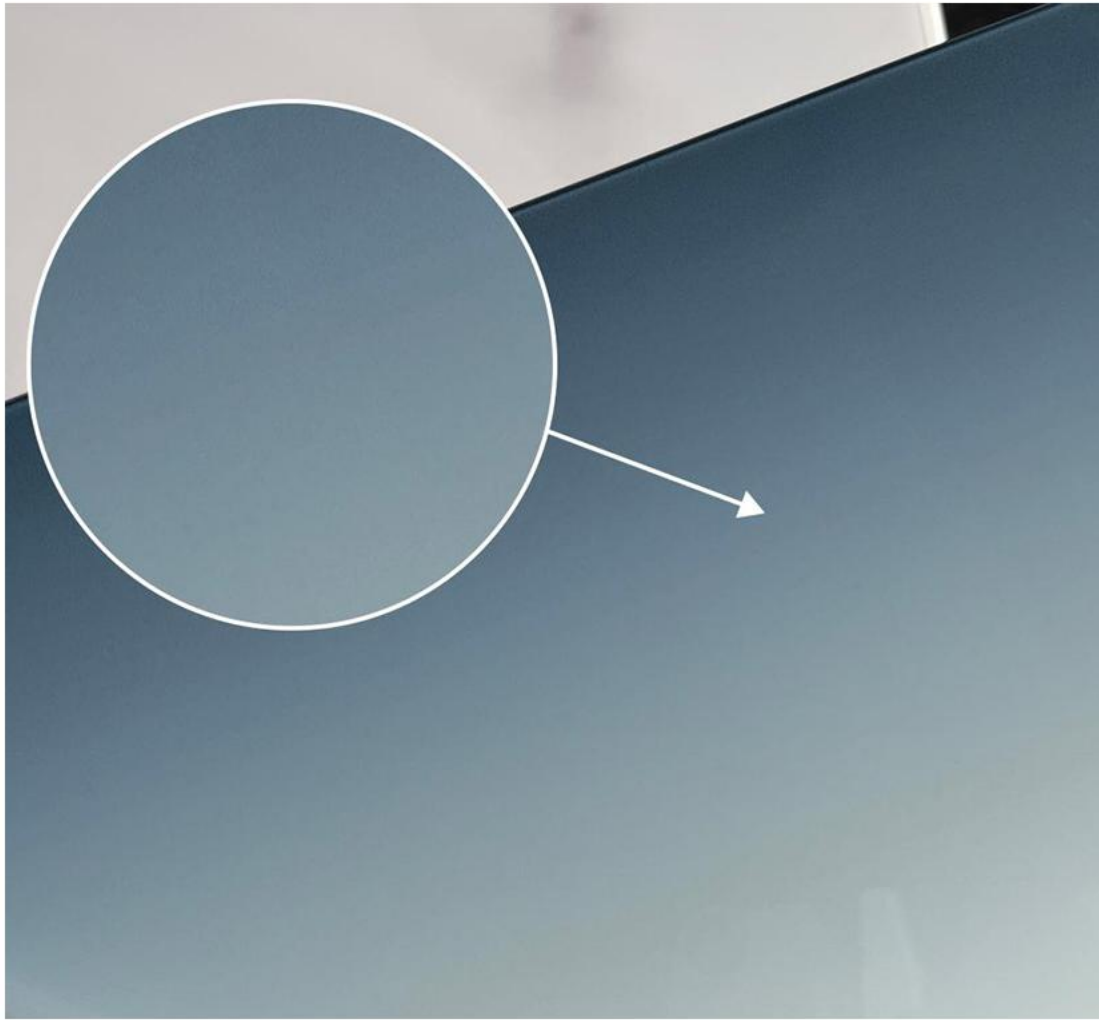
6. As there will be a certain running-in between the top and bottom cases, the edge of the top case covered by the bottom case may have slight wear, and the worn area will be covered after the installation. It will not affect the final visual experience.



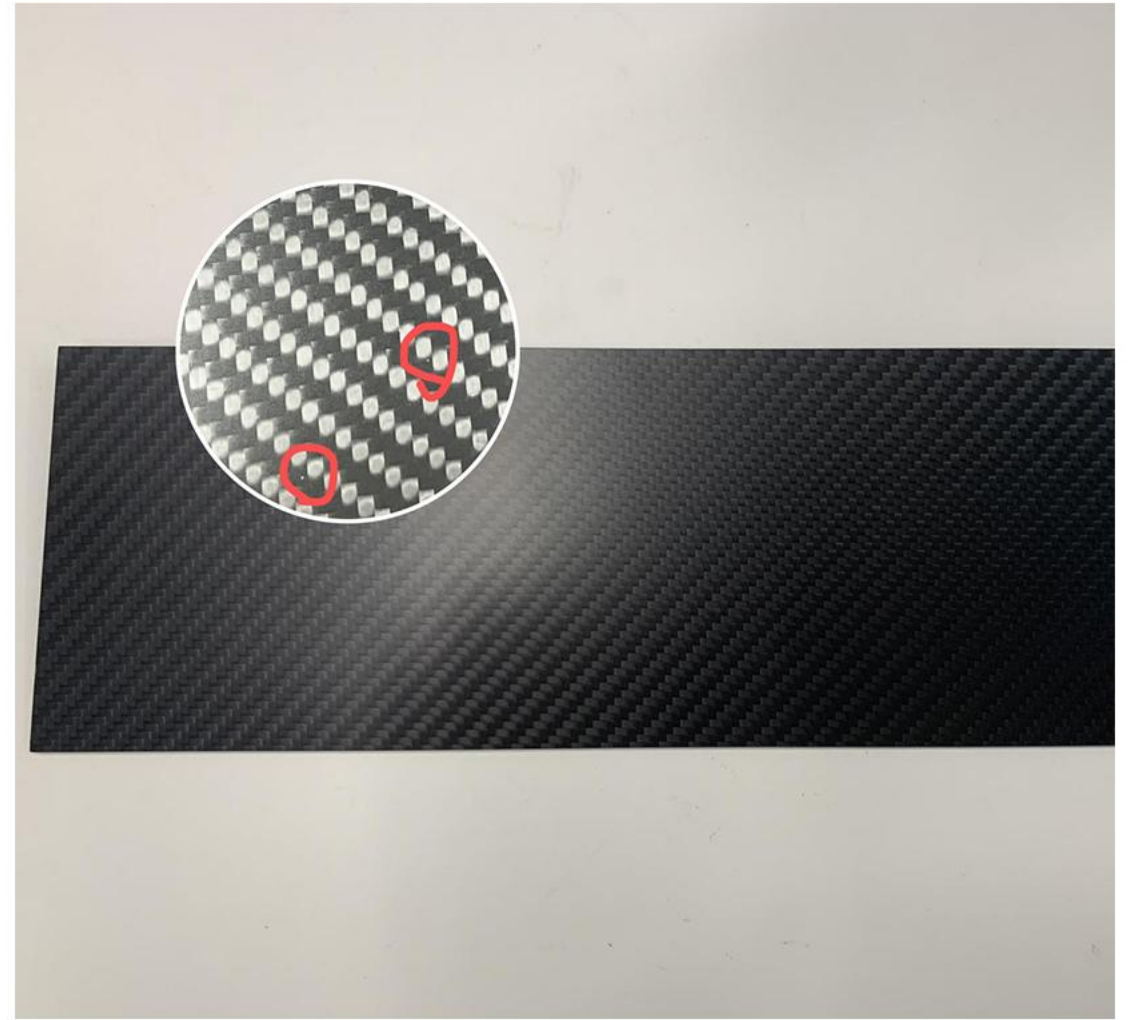
7. There may be a minimal texture difference in the texture of the case, which can only be seen at some specific lighting angles, but this situation is not visible at a normal visual angle.



8. Due to the large mirror area of stainless steel, there may still be some unavoidable dust spots and micro scratches. Our quality control standard is a visual distance of about 35 cm with no obvious defects. Minor defects are not accepted as after-sales reasons unless there are severe scratches or damage.



9. Due to the printing process of the back plate glass, there will be a certain texture in the colored glass, which is a normal situation. The rendering is for reference only. For details, please refer to the actual product.



10. Due to the special material of the carbon fiber back plate, you may see small white spots after magnifying several times, which is inevitable on this material. The above sample picture is within the range of our quality acceptance.