

CLLED Tapelight Series

12VDC Damp Location Listed

RGB Accessories

Date: _____ Type: _____

Client: _____

Project: _____

Plug-In Power Supplies and Accessories



Plug-and-Play Power Supply
120V/12VAC. Includes AC wall plug and female power output plug for easy installation
CLLEDDRIVER24/12
CLLEDDRIVER36/12



Plug-and-Play 2-Way Splitter
Includes (1) male and (2) female connectors. Approximately 2' long.
CLLEDYCONN



Plug-and-Play Power Supply
120V/12VAC. Includes AC wall plug and female power output plug for easy installation
CLLEDDRIVER24/12
CLLEDDRIVER36/12



Plug-and-Play 3-Way Splitter
Includes (1) male plug connector and (3) female plug connectors. Approximately 2' long.
CLLEDY3CONN



Input Power Connector
Includes (1) male plug connector and (1) male flex tape connector.
CLLEDPC12
CLLEDPC19



Plug-and-Play Power Supply Extension
Includes male and female plug connectors.
CLLED48DRIVEXT
CLLED96DRIVEXT



Output Power Connector
Includes (1) male plug connector and (1) female flex tape connector
CLLEDPT

Hardwire Power Supplies and Accessories



Hardwire Power Supply
120V/12VAC. Includes wire pigtailed on input and output sides. Must be maintained within an enclosure that meets local building codes and NEC (supplied by others).
CLLEDDRIVER20/12
CLLEDDRIVER60/12
CLLEDDRIVER60/12/277



Input Power Connector
Includes wire pigtail end and (1) male flex tap connector.
CLLEDPC12HW
CLLEDPC19HW



Female Connector
6" Connector includes wire pigtail end and (1) female plug connector. Used to add plug and play female connector to hardwire power supplies.
CLLEDFEMALEPC



Output Power Connector
Includes wire pigtail end and (1) female flex tape connector
CLLEDPCOUT



Male Connector
6" Connector includes wire pigtail end and (1) male plug connector. Used for easy plug in connection to plug and play power supply; wire end can be connected to controllers at the screw terminals
CLLEDMALEPC

Linear Connectors



Bridge Connector
Blank section used to bridge a gap where LEDs are not necessary.
CLLED6CONN - 6"
CLLED12CONN - 12"



Cross Connector
Used to connect up to four (4) TLT segments. May be cut to create 2-way "L" connection or 3-way "T" connection.
CLLEDCONN



Short Female-to-Female Connector
Used to connect male to female connectors.
CLLEDDFFCONN



Display Supply & Lighting, Inc.

Display Supply & Lighting, Inc.
1247 Norwood Avenue
Itasca, IL 60143 USA
TF 800.468.1488
P 630.285.9660
F 630.285.9670
www.dslgroup.com

CLLED Tapelight Series

12VDC Damp Location Listed

RGB Accessories

Date: _____ Type: _____

Client: _____

Project: _____

Controllers / Accessories



LED Power Repeater

Enables synchronized control of multiple runs from one controller.

CLLEDPowerREP



DMX 512 CV Decoder

Designed to convert universal DMX 512 signal to PWM signal when used with a DMX 512 console. Can control single color or RGB LEDs.

6-3/16" L x 3-1/8" W x 1-5/8" D.

CLLEDDMXINTEF



Switch, LED Tapelight IR Cabinet

Allows on/off switching functionality for use with cabinet doors. 36W MAX. 1-1/2"L x 1-3/16"W x 5/16"H.

CLLEDTLPICB



RGB Controller with RF Remote Control

12V/24V Pre-programmed functions include: color strobe, 3-channel color change and gradual brightness change. Includes three (3) programmable presets.

CLLEDRGBFCTR



Switch, LED Tapelight IR Wireless Waving

Allows on/off switching functionality by waving an object within the IR Field. 36W MAX. 1-1/2"L x 1-3/16"W x 5/16"H.

CLLEDTLPWV



Display Supply & Lighting, Inc.

Display Supply & Lighting, Inc.
1247 Norwood Avenue
Itasca, IL 60143 USA
TF 800.468.1488
P 630.285.9660
F 630.285.9670
www.dslgroup.com

CLLED Tapelight Series

12VDC Damp Location Listed

RGB Mounting Accessories

Date: _____ Type: _____

Client: _____

Project: _____



Aluminum Mounting Channel

Provides excellent heat sinking and protection to the LEDs while ensuring a clean, straight run.
6' long x 5/8" wide x 1/4" tall



S-CLEEDCHANNELSTD 6' Standard Channel, Aluminum

S-CLEEDCHANSTDB 6' Standard Channel, Black

S-CLEEDCHANANGLE 6' 45° Angled Channel, Aluminum

S-CLEEDCHANANGLEBL 6' 45° Angled Channel, Black

S-CLEEDCHANRECESSED 6' Recessed Channel, Aluminum

S-CLEEDCHANREC-BL 6' Recessed Channel, Black

S-CLEEDCHANRND 6' Round Channel, Aluminum

S-CLEEDCHANRNDDB 6' Round Channel, Black

S-CLEEDCHANDBL 6' Double Wide Channel, Aluminum

S-CLEEDCHANDBLB 6' Double Wide Channel, Black

S-CLEEDCHANDEEP 6' Deep Standard Channel, Aluminum

S-CLEEDCHANDEEPB 6' Deep Standard Channel, Black

S-CLEEDCHANEDGE 6' Ceiling Edge Mount Channel, Aluminum

S-CLEEDCHANEDGEGB 6' Ceiling Edge Mount Channel, Black

S-CLEEDCHANEDGEPE 6' Ceiling Edge Mount Channel, White

S-CLEEDCHANTOE 6' Toe Kick Channel, Aluminum

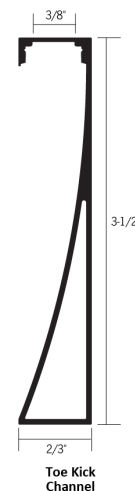
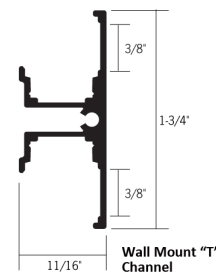
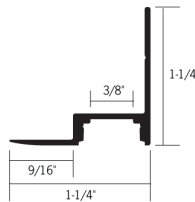
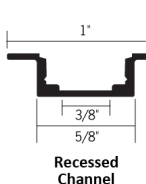
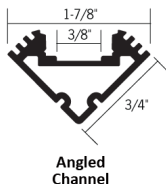
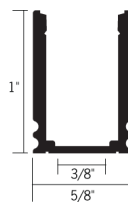
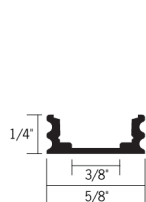
S-CLEEDCHANTOEB 6' Toe Kick Channel, Black

S-CLEEDCHANTOEP 6' Toe Kick Channel, White

S-CLEEDCHANT 6' Wall Mount "T" Channel, Aluminum

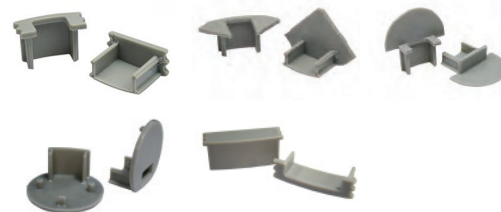
S-CLEEDCHANTB 6' Wall Mount "T" Channel, Black

S-CLEEDCHANTP 6' Wall Mount "T" Channel, White



End Caps

Creates a clean finish to the mounting channel.
Set of two (2) end caps; one open, one closed.



S-CLEEDCHANSTDEND Standard, Grey

S-CLEEDCHANSTDEENDB Standard, Black

S-CLEEDCHANNEL-ANGEND Angled, Grey

S-CLEEDCHANNEL-ANGENDB Angled, Black

S-CLEEDRECHANEND Recessed, Grey

S-CLEEDRECHANENDB Recessed, Black

S-CLEEDCHANENDRND Round, Grey

S-CLEEDCHANENDRNDB Round, Black

S-CLEEDCHANENDDBL Double Wide, Grey

S-CLEEDCHANENDDBLB Double Wide, Black

S-CLEEDCHANDEEPEND Deep Standard, Grey

S-CLEEDCHANDEEPEENDB Deep Standard, Black



Display Supply & Lighting, Inc.

Display Supply & Lighting, Inc.
1247 Norwood Avenue
Itasca, IL 60143 USA
TF 800.468.1488
P 630.285.9660
F 630.285.9670
www.dslgroup.com

CLLED Tapelight Series

12VDC Damp Location Listed

RGB Accessories

Date: _____ Type: _____

Client: _____

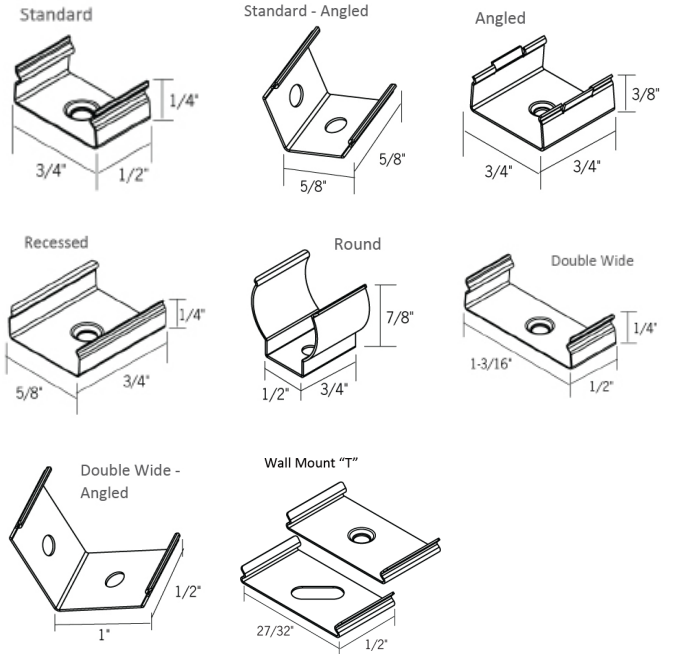
Project: _____



Mounting Clips:

(4) clips and
 (4) Philips head screws per package.
 24" Between clips recommended for most applications.

- S-CLEEDCHANCLIP-STD** Standard Channel Mounting
- S-CLEEDCHANSTDANGLE** Standard Channel, Angled Mounting
- S-CLEEDCHANCLIP-ANG** Angled Channel Mounting
- S-CLEEDCHANCLIP-REC** Recessed Channel Mounting
- S-CLEEDCHANCLIP-RND** Round Channel Mounting
- S-CLEEDCHANCLIP-DBL** Double Wide Channel Mounting
- S-CLEEDCHANCLIP-DBLANG** Double Wide Channel, Angled Mounting
- S-CLEEDCHANTCLIP** Wall Mount "T" Channel Mounting Clip Set



Acrylic Diffusion Lens

For use with mounting channel. Provides extra protection for the LEDs as well as diffusion to reduce glare.

- S-CLEDDIFFCLEAR** - Clear Lens
- S-CLEDDIFFUSERNEW** - Frosted Lens
- S-CLEDDIFFDBL** - Double Wide Clear Lens
- S-CLEDDIFFDBLF** - Double Wide Frosted Lens



Display Supply & Lighting, Inc.

Display Supply & Lighting, Inc.
 1247 Norwood Avenue
 Itasca, IL 60143 USA
 TF 800.468.1488
 P 630.285.9660
 F 630.285.9670
 www.dslgroup.com