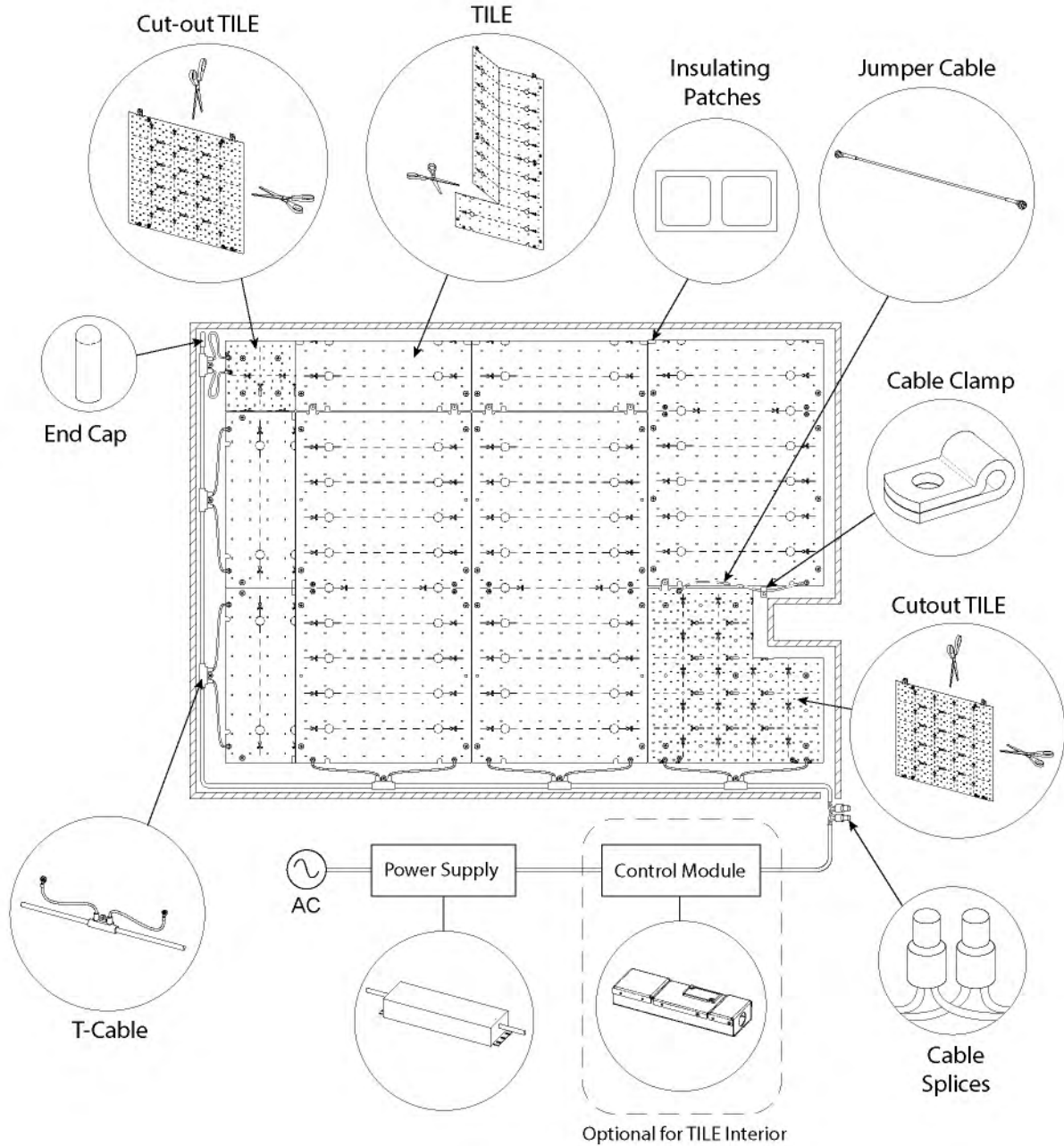



LED Flex Panel - TILE INTERIOR/TUNABLE WHITE QUICK START GUIDE



 Caution: Observe precautions for handling electrostatically sensitive devices.



In Canada, TILE Interior must be installed within an enclosure

RoHS



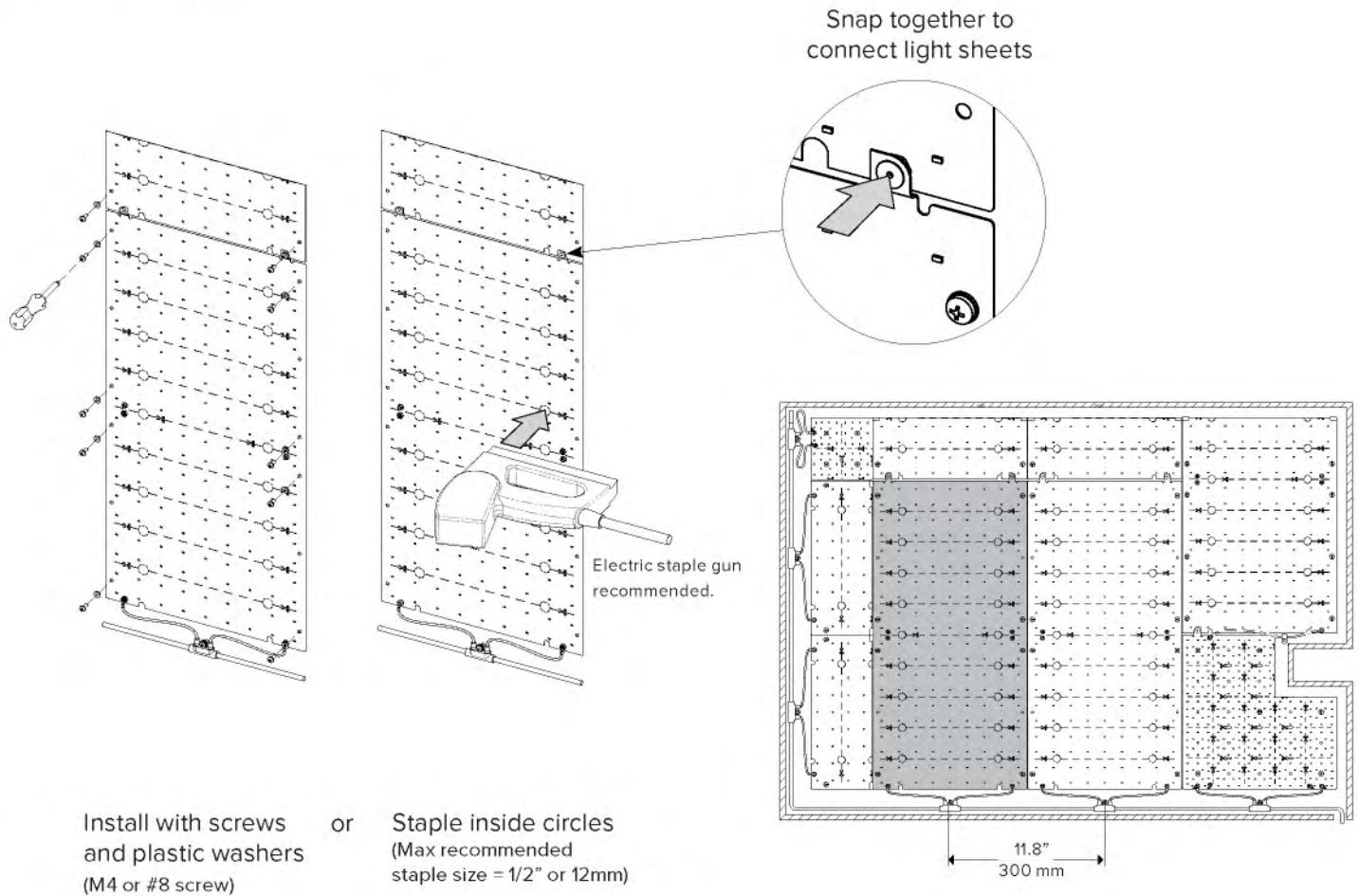
5 Year Limited Warranty: Parts and workmanship



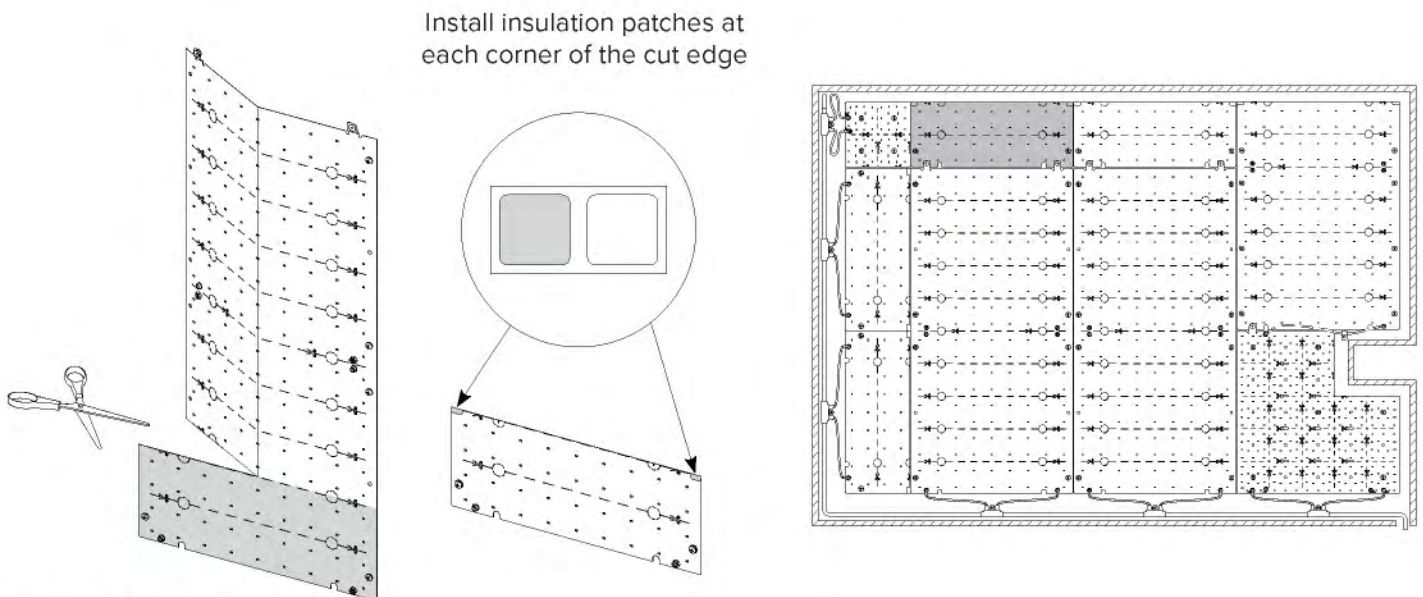
Display Supply & Lighting, Inc.

1247 Norwood Ave., Itasca, IL 60143
 TF (800) 468-1488
 P (630) 285-9660
 F (630) 285-9670
 www.dslgroup.com

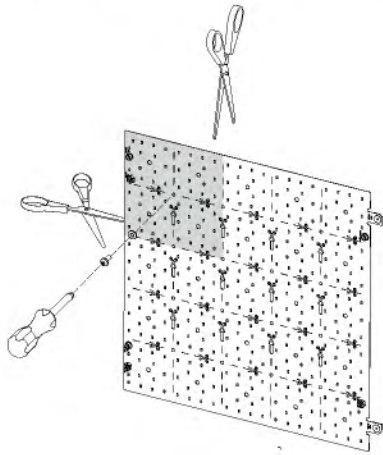
1 INSTALL TILE



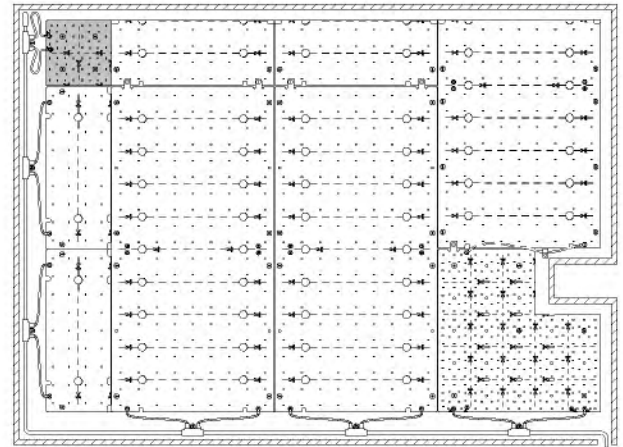
2 CUT TILES



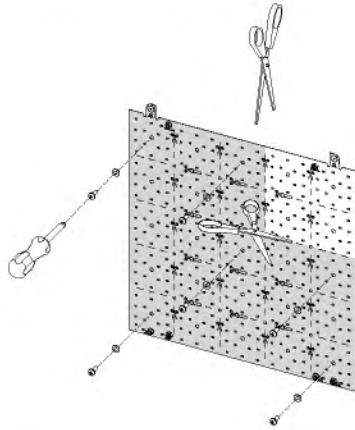
3 INSTALL CUT-OUT TILE IN CORNER



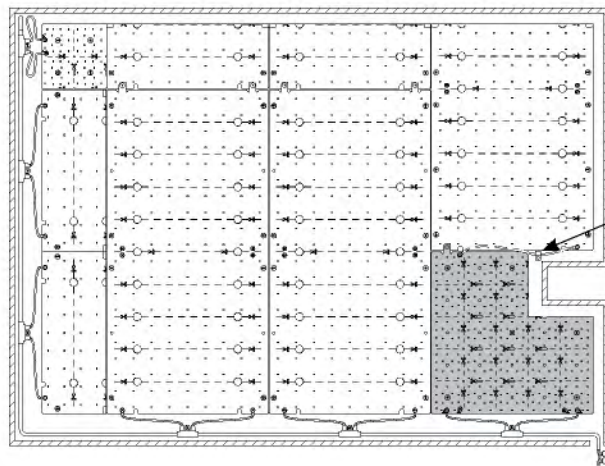
Install with screws and plastic washers.
Do not use staples on the Cut-out TILE.



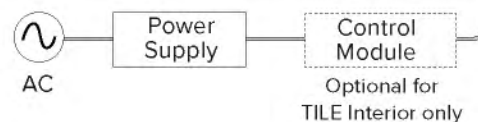
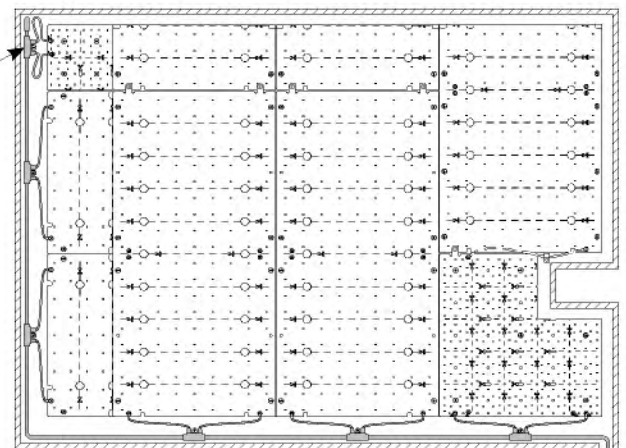
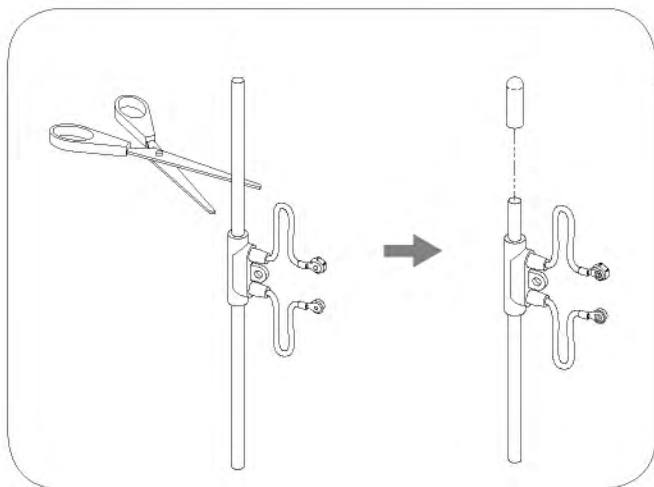
4 INSTALL CUT-OUT TILE(S)



Install with screws and plastic washers.
Do not use staples on the Cut-out TILE.

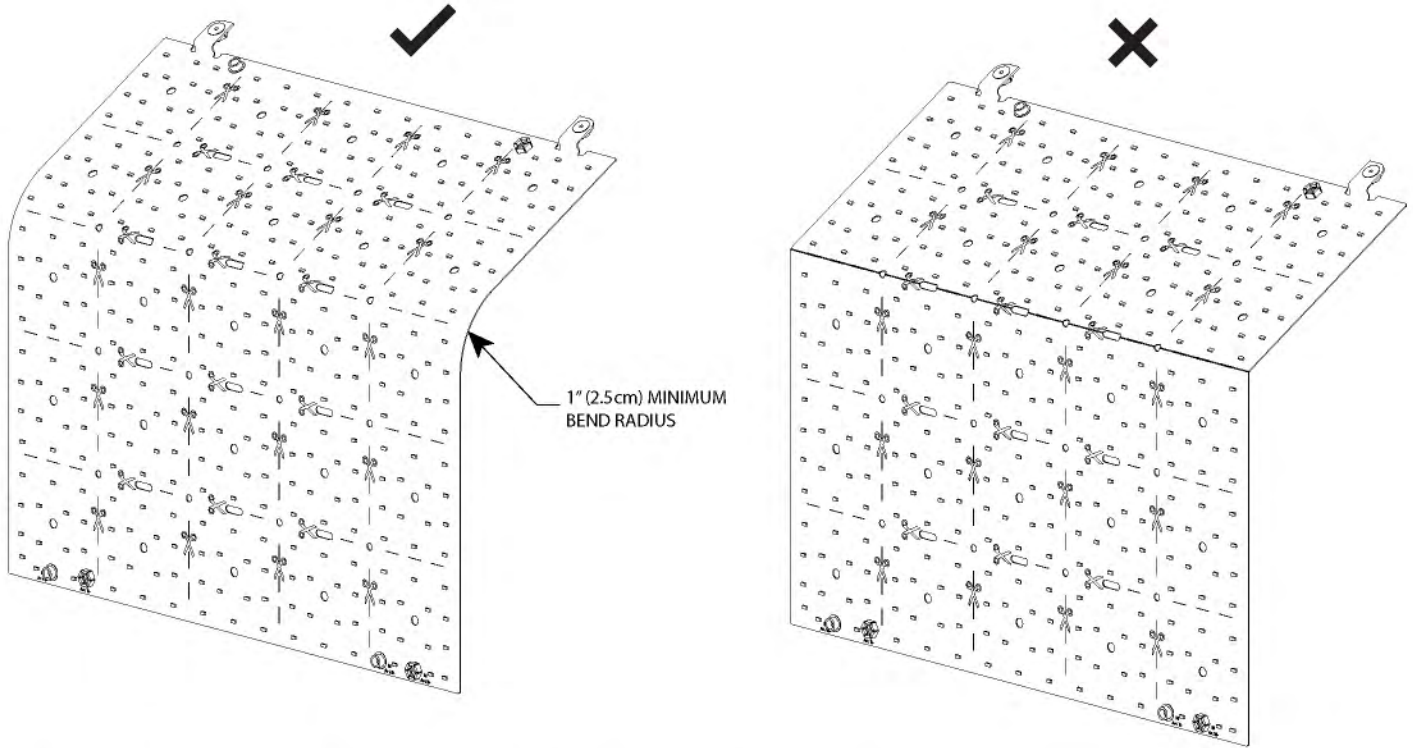


5 INSTALL T-CABLE AND CUT TO SIZE

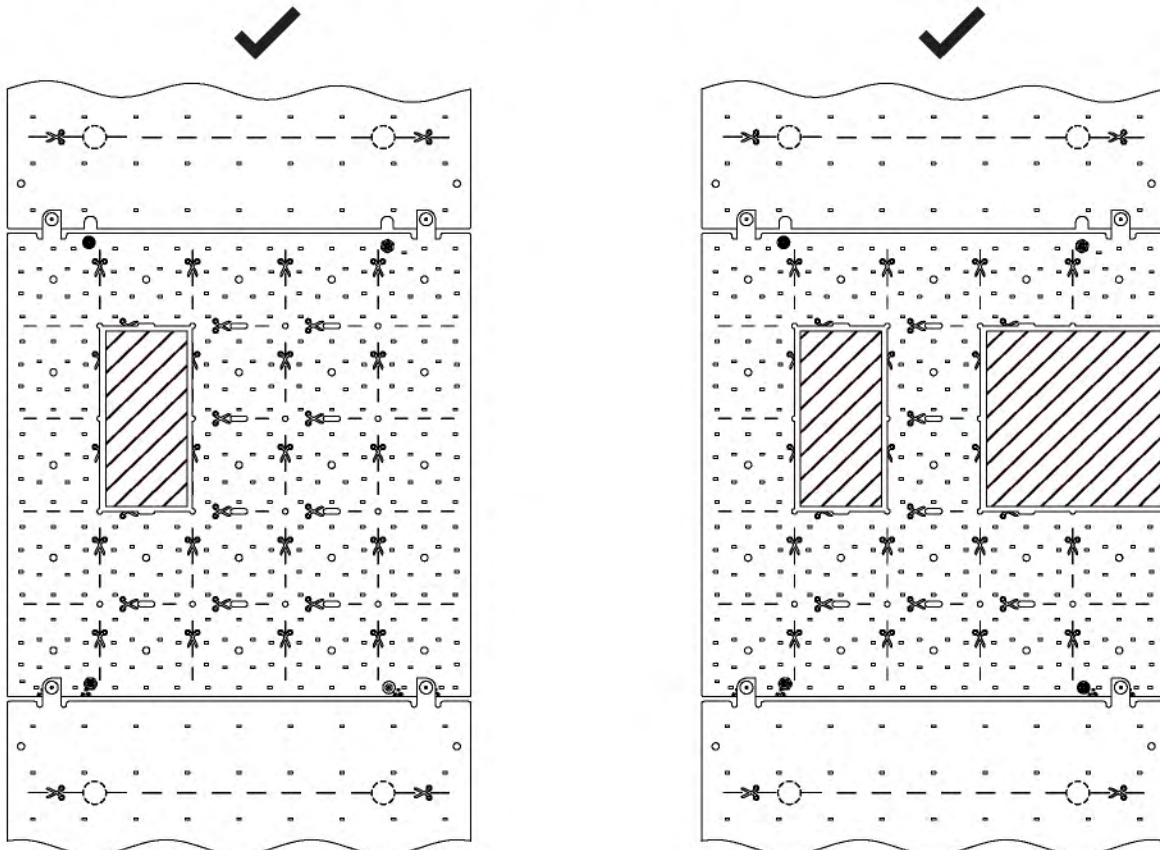




DO NOT BEND SHEETS SHARPLY AROUND CORNERS

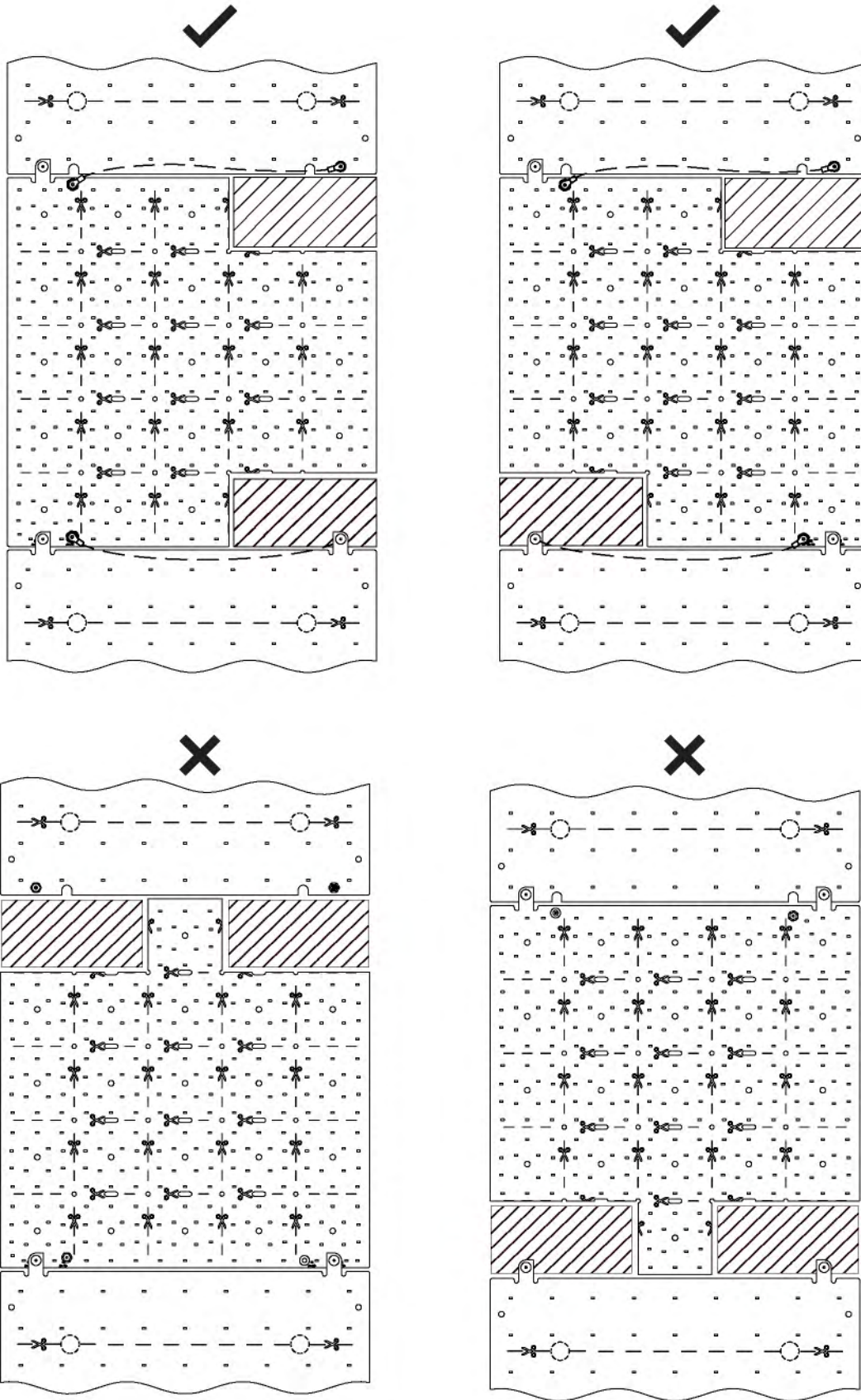


CUT-OUT TILE- ACCEPTABLE INTERNAL CUT-OUT CONFIGURATIONS (EXAMPLES)



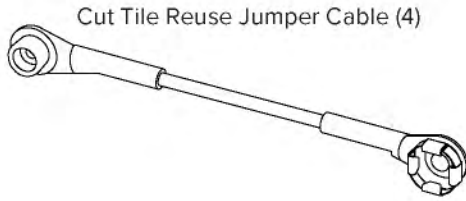


CUT-OUT TILE - ACCEPTABLE CORNER CUT-OUT CONFIGURATIONS (EXAMPLES)

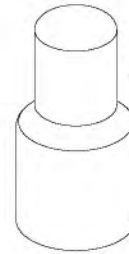




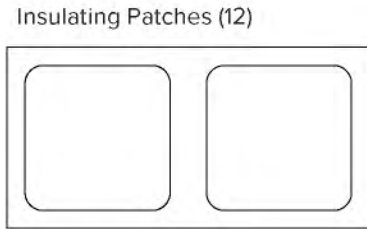
STARTER KIT CONTENTS



Cut Tile Reuse Jumper Cable (4)



Splice Connector (4)



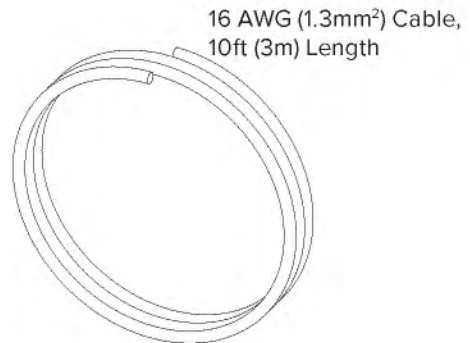
Insulating Patches (12)



T-Cable End Cap (4)

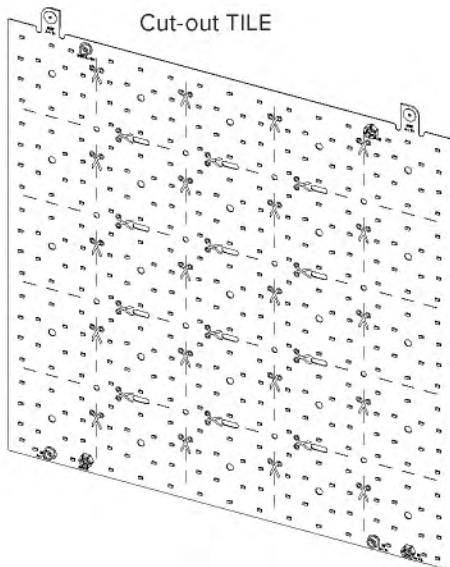


Quick
Start
Guide

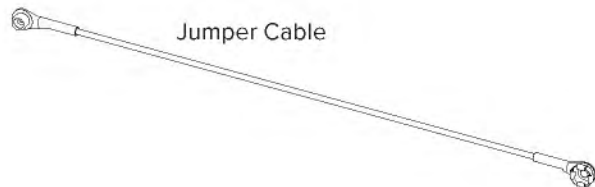


16 AWG (1.3mm²) Cable,
10ft (3m) Length

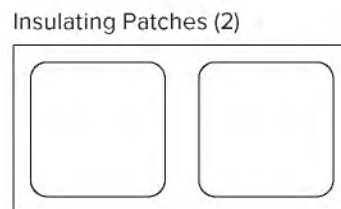
CUT-OUT KIT CONTENTS



Cut-out TILE



Jumper Cable



Insulating Patches (2)



Cable Clamp