



Display Supply & Lighting, Inc.

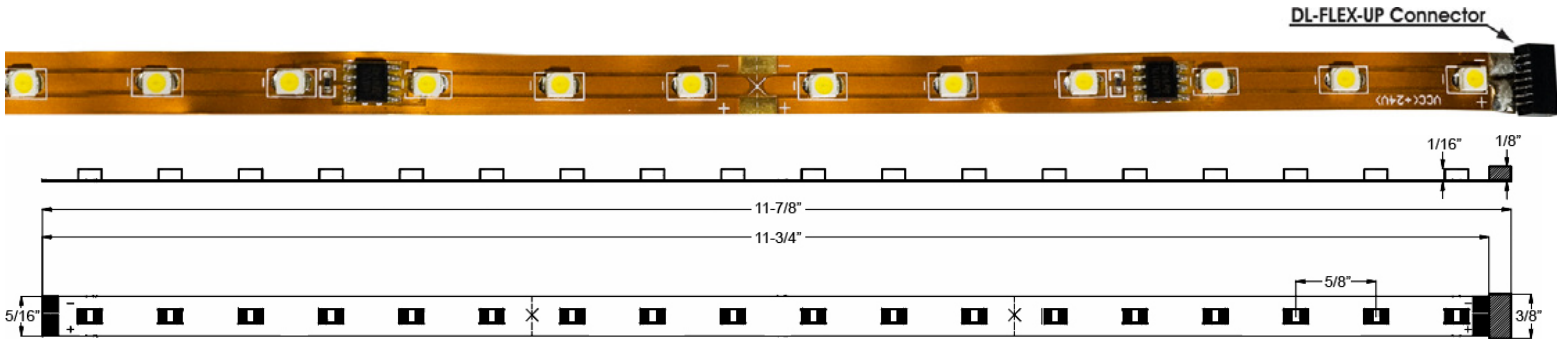
1247 Norwood Avenue, Itasca, IL 60143

(800) 468-1488

www.dslgroup.com

LED FLEXIBLE LINEAR TAPE DL-FLEX-UP STATIC SERIES

DL-FLEX-UP



DESCRIPTION

DL-FLEX-UP is a commercial grade modular lighting system featuring a wide range of plug-together accessories and a variety of control options. This unique feature eliminates the need for field soldering; providing easy and simple installations. Made of highly flexible material that can be applied to most accessible surfaces using 3M double-sided tape.

FEATURES

- Low power consumption, low heat.
- Optional aluminum mounting channel with clear and diffused lens covers that snap into the channel without tools.
- No ultra violet (UV/IR) radiation. No mercury.
- For a 90° bends or tighter, do so at the cutting mark.
- To make a 90° joint connection use the DL-FLEX-XCONN connector, which can be trimmed for 2-way L connection or 3-way T connection.

SPECIFICATIONS

Model	DL-FLEX-UP-30	DL-FLEX-UP-40	DL-FLEX-UP-60	DL-FLEX-UP-R	DL-FLEX-UP-Y	DL-FLEX-UP-G	DL-FLEX-UP-B
Color Temp.	3000 - 3300 K	4000 - 4300 K	6000 - 6500 K	Red	Yellow	Green	Blue
Watts/Ft	1.4W	1.4W	1.4W	0.9W	0.9W	1.4W	1.4W
Lumens/Ft	50 lm	55 lm	60 lm	29 lm	29 lm	39 lm	20 lm
Efficacy lumens/watt	36	39	43	32	32	28	14
CRI	80	75	70	-	-	-	-

APPLICATIONS

- Cove and soffit lighting
- Path and contour marking
- Display lighting
- Under-shelf and under-cabinet lighting
- Accent and edge lighting
- Backlighting
- Signage

120° beam angle; Input Voltage 24V DC; Lamp Life 50,000 hours;
 Dimensions – 11' 7/8" L x 3/8" W x 1/8" H per section (uncut)
 18 LEDs per foot; 5/8" LED Spacing; Operating Temperature -22° F – 185° F
 Max Run 30' (see wiring diagram for longer runs)
 Min Run (see cut markings) 6 LEDs approx. 4" (White, Blue, Green):
 9 LEDs approx. 6" (Red, Yellow)
 2 wire; Mounting – adhesive, clip, or channel; Indoor & Dry location use only
 UL Listed – 5 Year Limited Warranty (see warranty for details)



Display Supply & Lighting, Inc.

1247 Norwood Avenue, Itasca, IL 60143

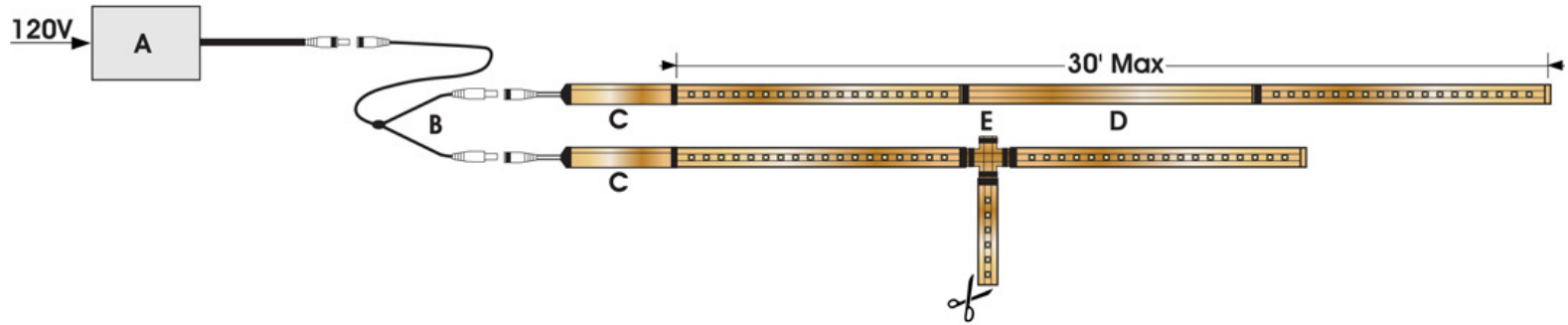
(800) 468-1488

www.dslgroup.com

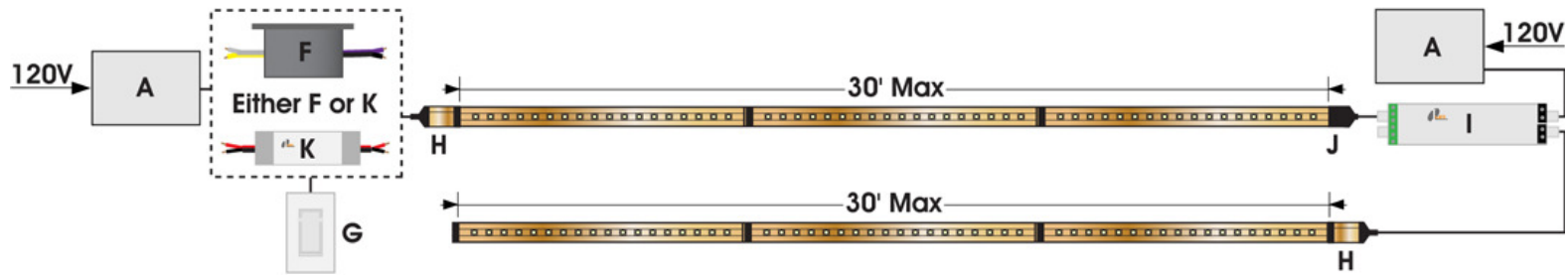
LED FLEXIBLE LINEAR TAPE DL-FLEX-UP STATIC SERIES

DL-FLEX-UP – wiring diagrams

MULTIPLE RUN - PLUG & PLAY CONNECTION



EXTENDED SINGLE RUN - DIMMABLE HARD-WIRE CONNECTION



- A. DL-PS-XX/24
- B. DL-PS-2Y
- C. DL-FLEX-PC
- D. DL-FLEX-CCXX
- E. DL-FLEX-X-CONN
- F. LC-DIM5A-HW (Requires DL-PS-DV-TV)
- G. DL-PS-DV-TV (For use with LC-DIM5A-HW)
- H. DL-FLEX-PC-HW
- I. LC-200-RPT
- J. DL-FLEX-PT-HW
- K. LC-DIM100-RF (Does not require DL-PS-DV-TV)

PHOTOMETRIC DATA

DL-FLEX-UP-30	Height	Fc	Area
	12"	21.4	17"L x 14"W
	18"	9.9	26"L x 23"W
	24"	5.5	35"L x 29 1/2"W

DL-FLEX-UP-40	Height	Fc	Area
	12"	23.1	17 1/2"L x 16"W
	18"	10.4	22 1/2"L x 24"W
	24"	6	32"L x 30"W

DL-FLEX-UP-60	Height	Fc	Area
	12"	33.7	18 1/2"L x 14 1/2"W
	18"	15.3	26 1/2"L x 25"W
	24"	8.7	32"L x 31"W



Display Supply & Lighting, Inc.

1247 Norwood Avenue, Itasca, IL 60143

(800) 468-1488

www.dslgroup.com

LED FLEXIBLE LINEAR TAPE DL-FLEX-UP SERIES

DL-FLEX-UP – specifications

Power Supply Guide for Maximum Runs

If the Max Load of a power supply exceeds the fixture's Max Run, then you may install multiple runs per given power supply.

Wattage = Max power capacity of power supply: **Max Load** = Fixture quantity a power supply can power: **Max Run** = Max length of a single fixture

Model Number	Wattage	Max Run	Max Load	Max Run	Max Load	Max Run	Max Load	Max Run	Max Load
DL-PS-20/24-JB	20	30'	14.3'	30'	22.2'	20'	6.7'	20'	6.3'
DL-PS-60/24-JB	60	30'	42.9'	30'	66.7'	20'	20'	20'	18.8'
DL-PS-100/24-JB	96	30'	68.6'	30'	106.7'	20'	32'	20'	30'
DL-PS-150/24-JB	150	30'	107.1'	30'	166.7'	20'	50'	20'	46.9'
DL-PS-320/24-JB	312	30'	222.9'	30'	346.7'	20'	104'	20'	97.5'
DL-PS-120/24-JB	2 x 60*	30'	2 x 42.9'	30'	2 x 66.7'	20'	2 x 20'	20'	2 x 18.8'
DL-PS-180/24-JB	3 x 60*	30'	3 x 42.9'	30'	3 x 66.7'	20'	3 x 20'	20'	3 x 18.8'
DL-PS-200/24-JB	2 x 96*	30'	2 x 68.6'	30'	2 x 106.7'	20'	2 x 32'	20'	2 x 30'
DL-PS-25/24-DIM-JB+	25	30'	17.9'	30'	27.8'	20'	8.3'	N/A	N/A

* Consists of multiple power supplies

+ Hybrid power supply with dimming capability. Dimming requires 0 – 10V dimmer (DVTV)

Model Number	Wattage	Max Run	Max Load	Max Run	Max Load	Max Run	Max Load	Max Run	Max Load
DL-PS-WP24/ 24	24	30'	17.1'	30'	26.7'	20'	8'	20'	7.5'
DL-PS-24/24	24	30'	17.1'	30'	26.7'	20'	8'	20'	7.5'
DL-PS-48/24	48	30'	34.3'	30'	53.3'	20'	16'	20'	15'
DL-PS-60/24	60	30'	42.9'	30'	66.7'	20'	20'	20'	18.8'
DL-PS-90/24	90	30'	64.3'	30'	100'	20'	30'	20'	28.1'

Dimmers

LC-DIM5A Plug & play dimmer; built in 0-10V dimming control

LC-DIM5A-HW Hard wire dimmer; requires separate 0-10V dimmer (see DL-PS-DV-TV)

DL-PS-DV-TV Wall plate dimmer; used with LC-DIM5A – HW or DL-PS-25/24-DIM

LC-DIM100-RF Plug & Play Remote Dimmer (step dimming)

Amplifiers

LC-200-RPT Power repeater used for extending runs (compatible with dimmers)



Display Supply & Lighting, Inc.

1247 Norwood Avenue, Itasca, IL 60143

(800) 468-1488

www.dslgroup.com

LED FLEXIBLE LINEAR TAPE DL-FLEX-UP STATIC SERIES

DL-FLEX-UP – Accessories

Plug & Play Accessories

DL-FLEX-UP-4-(B/G/30/40/60)

4" Linear Strip. Unlike a field cut 4" section, which becomes a dead-end, it has an output connector mounted at the cut - permits attachments to subsequent sections of Flex and interconnects. Output: Blue, Green, 3000K, 4000K, 6000K. Max Watt 0.46W



DL-FLEX-X-CONN

Universal, "L", "X" & "T" connector. Allows for the direct connection of up to four DL-FLEX-UP strips.

Scissor cut to make "L" & "T" - straight-line 90° cuts only.



DL-FLEX-UP-6-(R/Y)

6" Linear Strip. Unlike a field cut 6" section, which becomes a dead-end, it has an output connector mounted at the cut - permits attachments to subsequent sections of Flex and interconnects. Output: Red, Yellow. Max Watt: 0.7W



Yellow. Max Watt: 0.7W

DL-FLEX-DC6

6' Clear Dust Cover lens that protects LED strips during cleaning, etc. Acrylite Plus PMMA with a 91.5% transmittance; 1% haze (ASTM D1925).



DL-FLEX-FL6

6' Frosted lens that creates a simple "glow" for a direct view delineation. Acrylite Plus ZDF Impact Acrylic Polymer with an 85% transmittance; 4% haze (ASTM D1925).

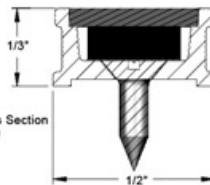


DL-FLEX-CH6

6' Mounting Channel.

6'L x 1/2"W x 1/3"H

Detail Cross Section Scale 4.000



DL-FLEX-CC6

6" Flexible mid-connector. To reach across or hide behind gaps.



DL-FLEX-CC12

12" Flexible mid-connector. To reach across or hide behind gaps.

LLMFH-C/C-CH6

6' Extruded housing for carpet-to-carpet connection, complete with clear, slide-in, protective lens. For field cutting.



LLMFH-C/W-CH6

6' Extruded housing for carpet-to-wood or tile floor connection, complete with clear, slide-in, protective lens. For field cutting.



DL-FLEX-CH-EC

End Cap for DL-FLEX-CH6 Mounting Channel for closed end. Use with DL-FLEX-CH-LE and a lens type DL-FLEX-FL6 or -DC6.



DL-FLEX-CH-CLIP

Mounting Clip for 6' Mounting Channel (2 pcs.) Recommended maximum 24" between DL-FLEX-CH-CLIPS for most installations.



DL-FLEX-CH-LE

Live End assembly for Mounting Channel with cable clamp, needs DL-FLEX-PC2 (HW) to complete the assembly.





Display Supply & Lighting, Inc.

1247 Norwood Avenue, Itasca, IL 60143

(800) 468-1488

www.dslgroup.com

LED FLEXIBLE LINEAR TAPE DL-FLEX-UP STATIC SERIES

DL-FLEX-UP – hardware accessories

Hard Wire Accessories

**DL-FLEX-PC2-HW**

12" Hard-wire power input connector with short circuit board.
12" x (2 x #20) in black pvc jacket + 1/4" flexible circuit board.

**DL-FLEX-PC-HW**

12" Hard-wire power input connector.
Used at start of every run.
12" x (2 x #20) in black pvc jacket + 5" flexible circuit board.

**DL-FLEX-PT-HW**

12" Hard-wire power output connector.
Used to connect LC-200-RPT at end of runs to extend capacity. Also used to jump runs behind walls in a hard-wire application when reconnecting runs.

Plug & Play Accessories (for connecting Plug & Play LED Drivers to Lighting Controllers)

**DL-FLEX-PC**

12" Plug and play power input connector.
Used at start of every run.
Connects to a plug-in or a desktop type LED Driver.

**DL-FLEX-PC2**

12" Plug and play power input connector with short circuit board.
12" x (2 x #20) in black pvc jacket + 1/4" flexible circuit board.

**DL-P\$-EXT48**

48" LED Driver Extension.

DL-P\$-EXT96

96" LED Driver Extension.

**DL-FLEX-PT**

12" Plug and play power output connector.
Used to connect LC-200-RPT at end of runs to extend capacity.

**DL-P\$-PT-M**

4" Male 2-wire controller input power connector.
For connecting plug and play supplies to hard-wire equipment or lighting controllers.

**DL-P\$-2Y**

2-way split power feed connects multiple home runs to a single power supply.
Used to feed 2 x DL-FLEX-PC from a single supply - can be used in multiples.
Feed: 7-1/2"L. Connector Runs: 10-3/4"L.

**DL-P\$-PT-F**

12" Female 2-wire controller input power connector.
For connecting plug and play supplies to hard-wire equipment or lighting controllers.

**DL-P\$-3Y**

3-way split power feed connects multiple home runs to a single power supply.
Used to feed 3 x DL-FLEX-PC from a single supply - can be used in multiples.
Feed: 11-1/4"L. Connector Runs: 12-1/4"L.