

Date: \_\_\_\_\_ Type: \_\_\_\_\_

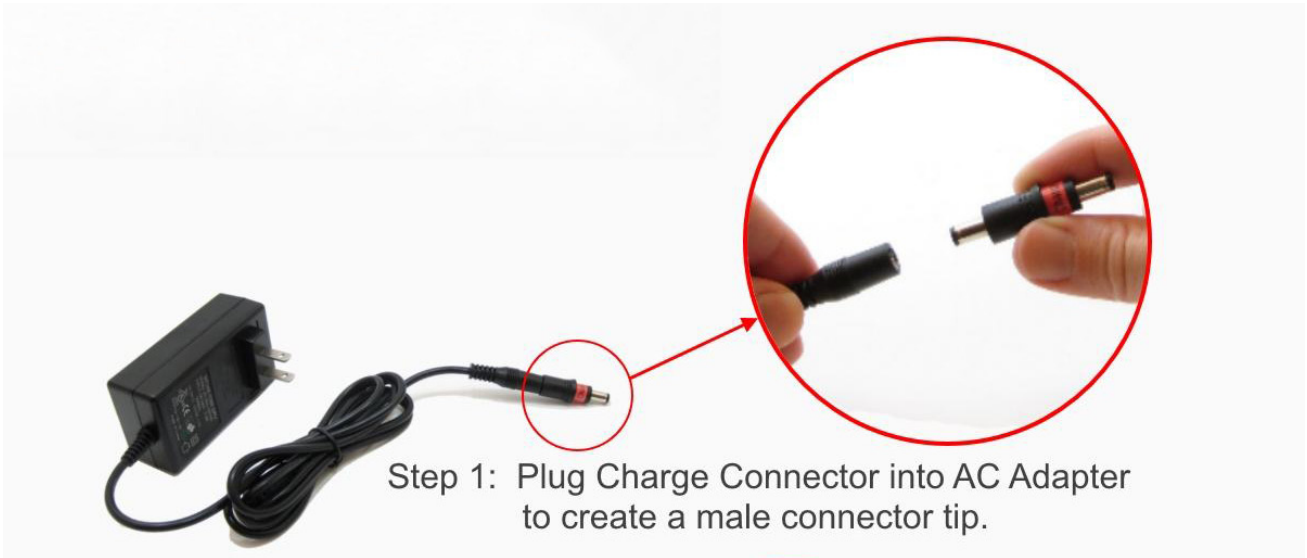
Client: \_\_\_\_\_

Project: \_\_\_\_\_



# Mobile Power Center

## Charging Instructions



Step 1: Plug Charge Connector into AC Adapter to create a male connector tip.



Step 2: Plug the AC Adapter's newly created male tip into the red colored port labeled "Input" on the side of the Mobile Power Center.



Display Supply & Lighting, Inc.

Display Supply & Lighting, Inc.  
1247 Norwood Avenue  
Itasca, IL 60143 USA  
TF 800.468.1488  
P 630.285.9660  
F 630.285.9670  
www.dslgroup.com

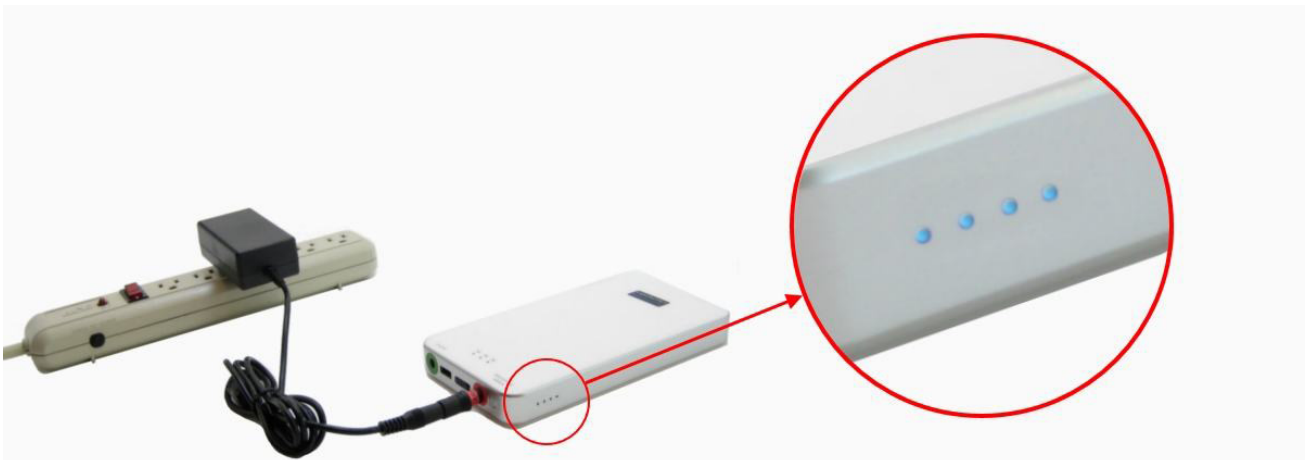
Date: \_\_\_\_\_ Type: \_\_\_\_\_

Client: \_\_\_\_\_

Project: \_\_\_\_\_



## Mobile Power Center Charging Instructions - Continued



Step 3: Plug AC Adapter into any standard outlet. Indicator lights will blink while charging and remain illuminated when fully charged. Fully charges in approximately 4 hours. Always disconnect AC Adapter when fully charged.

**\* IMPORTANT:** Never charge more than 1 Mobile Power Center from a single AC Adapter. (i.e. do not "dual-charge" using a Y-Cable). Doing so will damage the AC Adapter.



Display Supply & Lighting, Inc.

Display Supply & Lighting, Inc.  
1247 Norwood Avenue  
Itasca, IL 60143 USA  
TF 800.468.1488  
P 630.285.9660  
F 630.285.9670  
www.dslgroup.com