

S-CLLED Tapelight Series

24V Damp Location

RGB Flexible Tapelight

Date: _____ Type: _____

Client: _____

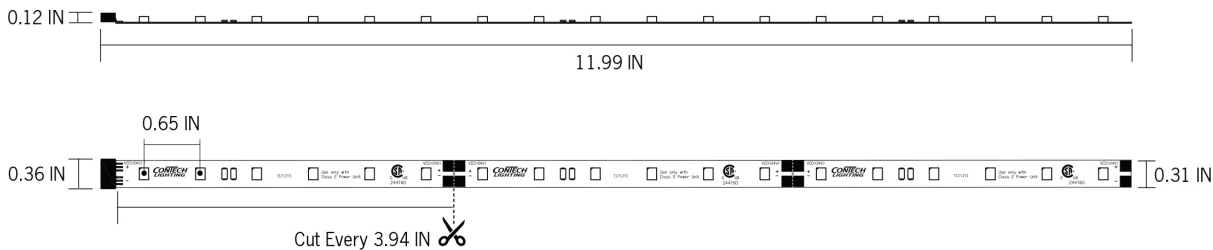
Project: _____



Flexible, low voltage linear LED accent lighting system provides high quality illumination for many indoor applications including: Display Lighting, Under Cabinet, Cove and Soffit, Accent and Edge Lighting.

- High output LEDs provide excellent luminous intensities at low drive currents resulting in lower power consumption, and consistent, stable performance, delivering 88 lumens @ 3.9w per foot (Delivered lumens based on 1 ft. of tape, all colors on).
- Single run length up to 10 feet on one 96W power supply
- Modular “plug and play” system features a wide range of power supplies, controllers and connectors. System is easy to install with no need for field soldering.
- Available in 20' reels consisting of connected, individual 12" segments. Can also be purchased in individual 12" segments with male and female connector ends.
- Each segment includes male and female connector ends for continuous linear installations. Each 12" segment can also be cut (on the cut lines) in 4" increments to provide optimal fit and flexibility for any installation.
- Also available in 30' continuous reels (without mid-connectors); includes one female and one male end connector per reel.
- Easy to install using the peel & stick 3M double sided adhesive backing; tape can be directly mounted to most surfaces.
- For additional thermal heatsinking protection of the LEDs and an overall cleaner aesthetic, using any of the aluminum mounting channels is recommended. Aluminum mounting channels are easily installed utilizing the mounting clips (sold separately), which includes four (4) spring steel mounting clips and screws.
- For added protection of LEDs, as well as subtle diffusion & glare control, clear or frosted diffusion lenses are available for use with channels.
- cCSAus Certified to UL standards.

WATTAGE	3.9W/FT
LUMEN OUTPUT	88Lm/FT (All LEDs on)
LED DENSITY	18 LED/FT (0.65" Spacing)
SYSTEM RATING	50,000 Hours @ 70% Lumen Maintenance
INPUT VOLTAGE	24V
Dimming	Dimmable using dimmable power supplies, controllers or DMX interface
RUN LENGTH	10 FT Max
AMBIENT OPERATING TEMP	-4° to 104°F (-20° to 40°C)



Run Lengths		
24V Power Supply Input: 24V DC		S-CLLEDT24VRGB*R RGB, 3.9W/FT
WATTAGE	MAX RUN	MAX SPLIT
24W	4FT	4FT
36W	8FT	8FT
60W	10FT	12FT
72W	10FT	15FT
96W	10FT	20FT

- Max split can be split more than once, without exceeding the max single run in each leg.
- Max run refers to the total single run of tapelight that can go on a power supply. Max split refers to the total amount of tapelight that can go on a driver if it were separated into two runs.
- Max run lengths are calculated with 12V or 24V DC at the start of the tape run. Voltage drop may occur if not using proper wire gauge. Please refer to the voltage drop and wire length distance chart.
- Max run lengths are calculated with no more than 30% light loss from the start of the tape run to the end of tape run for optimal light consistency. If run lengths are extended beyond the recommended lengths noted above, there will be inconsistent light output and voltage drop.
- Overall distance of LED tape under load (illuminated sections). If exceeded damage to the power supply and LED tape may result.



Display Supply & Lighting, Inc.

Display Supply & Lighting, Inc.
1247 Norwood Avenue
Itasca, IL 60143 USA
TF 800.468.1488
P 630.285.9660
F 630.285.9670
www.dslgroup.com

CLLED Tapelight Series

24VDC Damp Location Listed

RGB/RGBW Accessories

Date: _____ Type: _____

Client: _____

Project: _____

24V Plug-In Power Supplies and Accessories



Plug-and-Play Power Supply
120V/24VDC. Includes AC wall plug and female power output plug for easy installation. Class 2 listed. For use with 24V Tapelight.
36W: S-CLEDDRIVER36/24
60W: S-CLEDDRIVER60/24
96W: LLLVMODPOWER24V4A



Plug-and-Play 2-Way Splitter
Includes (1) male and (2) female connectors. Approximately 2' long.
S-CLEDDYCONN



Plug-and-Play 3-Way Splitter
Includes (1) male plug connector and (3) female plug connectors. Approximately 2' long.
S-CLEDDY3CONN



Plug-and-Play Power Supply Extension
Includes male and female plug connectors.
S-CLEDD48DRIVEXT
S-CLEDD96DRIEXT



Input Power Connector
Includes (1) male plug connector and (1) male flex tape connector.
S-CLEDDPC

Hardwire Power Supplies and Accessories



Hardwire Power Supply
120V/24VDC. Includes wire pigtailed on input and output sides. Must be maintained within an enclosure that meets local building codes and NEC (supplied by others). 1 ft. wire leads. Class 2 recognized. For use with 24V LED Tapelight.
S-CLEDDRIVER60/24HW
S-CLEDDRIVER96/24V



RGB Male Power Connector
Includes wire pigtail end and (1) male flex tap connector. Use with RGB Controllers, LED Power Repeater and DMX Interface Module. Use with 24V RGB LED Tapelight only.
S-CLEDDPC24HWRGB



Female Connector
6" Connector includes wire pigtail end and (1) female plug connector. Used to add plug and play female connector to hardwire power supplies.
S-CLEDDFEMALEPC



RGB Female Power Connector
Includes wire pigtail end and (1) female flex tape connector; total 24-inch length. Used with RGB Controllers, LED Power Repeater and DMX Interface module. Use with 24V RGB LED Tapelight only.
S-CLEDDFPC24HWRGB



Male Connector
6" Connector includes wire pigtail end and (1) male plug connector. Used for easy plug in connection to plug and play power supply; wire end can be connected to controllers at the screw terminals.
S-CLEDDMALEPC



Hardwire Class 2 Enclosed Driver - ENC Series
120V/24VDC. Dimmable Class 2 listed driver. Compact self-enclosed driver with two (2) knockouts. Auto reset and short circuit protection. Dimmable with standard MLV/Incandescent TRIAC (Leading Edge) dimmers; 8W Min. Load required for smooth dimming. TRIAC Driver dimming not recommended when using TW/RGB/RGBW controllers. For use with 24V LED Tapelight.
S-CLEDDRIVER60/24EN
S-CLEDDRIVER96/24EN



Display Supply & Lighting, Inc.

Display Supply & Lighting, Inc.
1247 Norwood Avenue
Itasca, IL 60143 USA
TF 800.468.1488
P 630.285.9660
F 630.285.9670
www.dslgroup.com

Copyright © 2024 Display Supply & Lighting, Inc. All rights reserved. All brand or product names are trademarks or registered trademarks of their respective owners. Due to continuous improvements and innovations, specifications may change without notice.

CLLED Tapelight Series

12VDC Damp Location Listed

RGB/RGBW Accessories Accessories

Date: _____ Type: _____

Client: _____

Project: _____

Linear Connectors



RGB Bridge Connector

Blank section used to bridge gaps where LEDs are not necessary.

Use with RGB & Tunable white LED Tapelight only.

S-CLLEDRGB2CONN - 2"

S-CLLEDRGB6CONN - 6"

S-CLLEDRGB12CONN - 12"



Cross Connector

Used to connect up to four (4) RGB tapelight segments. May be cut to create 2-way "L" connection or 3-way "T" connection. Use with RGB and tuneable white LED Tapelight only.

S-CLLEDRGBCONN



Short Female-to-Female RGB Connector

Used to connect male to female connectors.

Use with RGB and tuneable white LED Tapelight only.

S-CLLEDRGBFFCONN

Controllers / Accessories



RGB/RGBW 28-Key Remote Controller

8-Key RF Remote for color, speed, and brightness control. Seven (7) programmable scenes. 20AMP Max.

6-7/8" L x 1-3/4" W x 1-3/16" D

Use with 12V or 24V RGB/RGBW LED Tapelight
LTRGBCONT



DMX 512 CV Decoder

Designed to convert universal DMX 512 signal to PWM signal when used with a DMX 512 console.

Use with non-dimming tapelight power supplies.

6-3/16" L x 3-1/8" W x 1-5/8" D.

Use with 12V or 24V LED Tapelight; can control white, single color or RGB LEDs

LTDMXINTEF-840-6A



LED Power Repeater

Enables synchronized control of multiple runs from one controller.

Use with 12V or 24V Static Color, TW, RGB or RGBW LED Tapelight

LTPOWERREP



Switch, LED Tapelight IR Cabinet

Allows on/off switching functionality for use with cabinet doors. 36W MAX. 1-1/2" L x 1-3/16" W x 5/16" H.

S-CLLEDTLPICB



Switch, LED Tapelight IR Wireless Waving

Allows on/off switching functionality by waving an object within the IR Field. 36W MAX. 1-1/2" L x 1-3/16" W x 5/16" H.

S-CLLEDTLPIWV



Display Supply & Lighting, Inc.

Display Supply & Lighting, Inc.
1247 Norwood Avenue
Itasca, IL 60143 USA
TF 800.468.1488
P 630.285.9660
F 630.285.9670
www.dslgroup.com

Copyright © 2024 Display Supply & Lighting, Inc. All rights reserved. All brand or product names are trademarks or registered trademarks of their respective owners. Due to continuous improvements and innovations, specifications may change without notice.

CLLED Tapelight Series

12VDC Damp Location Listed

RGB/RGBW Mounting Accessories

Date: _____ Type: _____

Client: _____

Project: _____



Aluminum Mounting Channel

Provides excellent heat sinking and protection to the LEDs while ensuring a clean, straight run. 6' long x 5/8" wide x 1/4" tall



S-CLEEDCHANNELSTD 6' Standard Channel, Aluminum

S-CLEEDCHANSTDB 6' Standard Channel, Black

S-CLEEDCHANANGLE 6' 45° Angled Channel, Aluminum

S-CLEEDCHANANGLEBL 6' 45° Angled Channel, Black

S-CLEEDCHANRECESSED 6' Recessed Channel, Aluminum

S-CLEEDCHANREC-BL 6' Recessed Channel, Black

S-CLEEDCHANRND 6' Round Channel, Aluminum

S-CLEEDCHANRND B 6' Round Channel, Black

S-CLEEDCHANDBL 6' Double Wide Channel, Aluminum

S-CLEEDCHANDBLB 6' Double Wide Channel, Black

S-CLEEDCHANDEEP 6' Deep Standard Channel, Aluminum

S-CLEEDCHANDEEPB 6' Deep Standard Channel, Black

S-CLEEDCHANEDGE 6' Ceiling Edge Mount Channel, Aluminum

S-CLEEDCHANEDGE B 6' Ceiling Edge Mount Channel, Black

S-CLEEDCHANEDGE P 6' Ceiling Edge Mount Channel, White

S-CLEEDCHANTOE 6' Toe Kick Channel, Aluminum

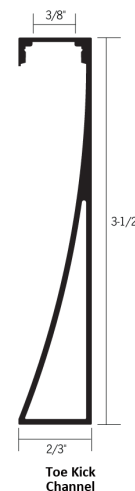
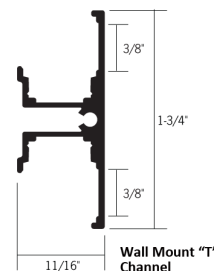
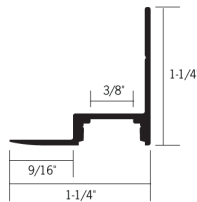
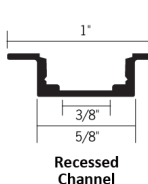
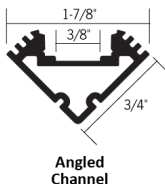
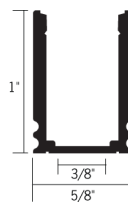
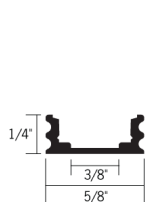
S-CLEEDCHANTOEB 6' Toe Kick Channel, Black

S-CLEEDCHANTOEP 6' Toe Kick Channel, White

S-CLEEDCHANT 6' Wall Mount "T" Channel, Aluminum

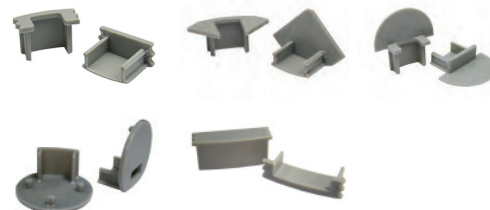
S-CLEEDCHANTB 6' Wall Mount "T" Channel, Black

S-CLEEDCHANTP 6' Wall Mount "T" Channel, White



End Caps

Creates a clean finish to the mounting channel. Set of two (2) end caps; one open, one closed.



S-CLEEDCHANSTDEND Standard, Grey

S-CLEEDCHANSTDENB Standard, Black

S-CLEEDCHANNEL-ANGEND Angled, Grey

S-CLEEDCHANNEL-ANGENDB Angled, Black

S-CLEEDRECHANEND Recessed, Grey

S-CLEEDRECHANENDB Recessed, Black

S-CLEEDCHANENDRND Round, Grey

S-CLEEDCHANENDRNDB Round, Black

S-CLEEDCHANENDDBL Double Wide, Grey

S-CLEEDCHANENDDBLB Double Wide, Black

S-CLEEDCHANDEEPEND Deep Standard, Grey

S-CLEEDCHANDEEPEMDB Deep Standard, Black



Display Supply & Lighting, Inc.
1247 Norwood Avenue
Itasca, IL 60143 USA
TF 800.468.1488
P 630.285.9660
F 630.285.9670
www.dslgroup.com

Copyright © 2024 Display Supply & Lighting, Inc. All rights reserved. All brand or product names are trademarks or registered trademarks of their respective owners. Due to continuous improvements and innovations, specifications may change without notice.

CLLED Tapelight Series

12VDC Damp Location Listed

RGB/RGBW Accessories

Date: _____ Type: _____

Client: _____

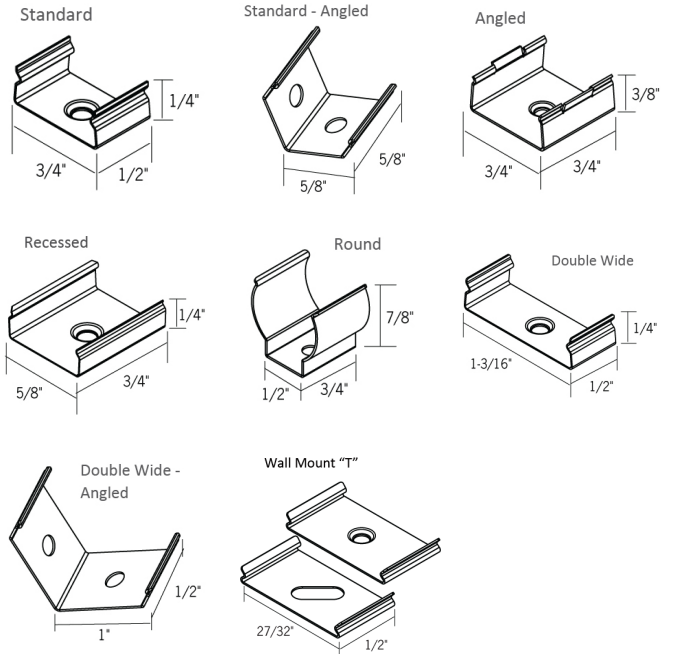
Project: _____



Mounting Clips:

(4) clips and
 (4) Philips head screws per package.
 24" Between clips recommended for most applications.

- S-CLEDDCHANCLIP-STD** Standard Channel Mounting
- S-CLEDDCHANSTDANGLE** Standard Channel, Angled Mounting
- S-CLEDDCHANCLIP-ANG** Angled Channel Mounting
- S-CLEDDCHANCLIP-REC** Recessed Channel Mounting
- S-CLEDDCHANCLIP-RND** Round Channel Mounting
- S-CLEDDCHANCLIP-DBL** Double Wide Channel Mounting
- S-CLEDDCHANCLIP-DBLANG** Double Wide Channel, Angled Mounting
- S-CLEDDCHANTCLIP** Wall Mount "T" Channel Mounting Clip Set



Acrylic Diffusion Lens

For use with mounting channel. Provides extra protection for the LEDs as well as diffusion to reduce glare.

- S-CLEDDIFFCLEAR** - Clear Lens
- S-CLEDDIFFUSERNEW** - Frosted Lens
- S-CLEDDIFFDBL** - Double Wide Clear Lens
- S-CLEDDIFFDBLF** - Double Wide Frosted Lens



Display Supply & Lighting, Inc.
 1247 Norwood Avenue
 Itasca, IL 60143 USA
 TF 800.468.1488
 P 630.285.9660
 F 630.285.9670
 www.dslgroup.com

Copyright © 2024 Display Supply & Lighting, Inc. All rights reserved. All brand or product names are trademarks or registered trademarks of their respective owners. Due to continuous improvements and innovations, specifications may change without notice.