

Date: \_\_\_\_\_ Type: \_\_\_\_\_

Client: \_\_\_\_\_

Project: \_\_\_\_\_



# CLLED Tapelight Series

## 24VDC Damp Location

### RGBW Flexible Tapelight

Flexible, low voltage linear LED accent lighting system provides high quality illumination for many indoor applications including: Display Lighting, Under Cabinet, Cove and Soffit, Accent and Edge Lighting.

- LEDs with individual Red, Green and Blue and White diodes in each, can be programmed to mix and produce many colors of the visible spectrum.
- Provides excellent luminous intensities at low drive currents resulting in lower power consumption, low heat and consistent, stable performance.
- Delivers 194 lumens at 4.8W per foot (based on 1 foot of tape, all LEDs on); 106 lumens at 4.8W per foot (based on 1 foot of tape, white LEDs only, 3000K)
- Single run length up to 16 feet on one 96W power supply
- Modular “plug and play” system features a wide range of power supplies, controllers and connectors.
- System is easy to install with no need for field soldering.
- Available in 20’ reels consisting of connected, individual 12” or 4” segments. Can also be purchased in individual 12” or 4” segments.
- Each segment includes male and female connector ends for continuous linear installations. Each 12” segment can also be cut (on the cut lines) in 4” increments to provide optimal fit and flexibility for any installation.
- RGBW Tapelight is also available in 16’ continuous reels (without mid-connectors); includes one female and one male end connector per reel. Continuous reel may be cut in 4” increments to provide optimal fit and flexibility for any installation. Use with output connector or female-to-female connector to power cut segment of tape.
- RGBW Series Tapelight can be programmed for various color changing effects as well as smooth dimming using any of the CLLED series dimming and RGBW controls.
- Easy to install using the peel & stick 3M double sided adhesive backing; tape can be directly mounted to most surfaces.
- For additional thermal heatsinking protection of the LEDs and an overall cleaner aesthetic, using the aluminum mounting channel (standard, recessed, or angled) is recommended. Aluminum mounting channels are easily installed utilizing the appropriate set of mounting clips (sold separately). RGBW Tapelight is not compatible with channel endcaps or diffusion lens.
- For added protection of the LEDs, as well as subtle diffusion and glare control, clear or frosted lenses are available for use with channels.
- cCSAus Certified to UL standards.
- Suitable for dry or damp locations. Not suitable for wet locations.

S-CLLEDTRGBW*R-24	
WATTAGE	4.8W/FT
LUMEN OUTPUT	194Lm/FT (All LEDs on)
LED DENSITY	18 LED/FT (0.65" Spacing)
COLOR TEMPERATURE	WHITE: 3000K, 80 CRI RGBW: Red, Green, Blue, and White diodes in each LED, can be programmed to mix and produce many colors of the visible spectrum.
SYSTEM RATING	50,000 Hours @ 70% Lumen Maintenance
INPUT VOLTAGE	24V
Dimming	Dimmable via RGBW Controller DMX using optional interface
AMBIENT OPERATING TEMP	-4° to 104°F (-20° to 40°C)



Display Supply & Lighting, Inc.

Display Supply & Lighting, Inc.  
1247 Norwood Avenue  
Itasca, IL 60143 USA  
TF 800.468.1488  
P 630.285.9660  
F 630.285.9670  
www.dslgroup.com

Date: \_\_\_\_\_ Type: \_\_\_\_\_

Client: \_\_\_\_\_

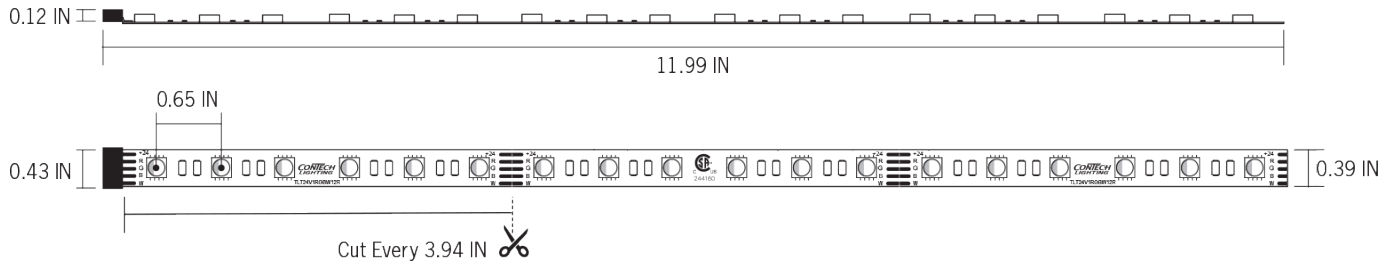
Project: \_\_\_\_\_



# CLLED Tapelight Series

## 24VDC Damp Location

## RGBW Flexible Tapelight



POWER SUPPLY INPUT VOLTAGE: 24V DC	24V High Output 4.8W/FT	
WATTAGE	MAX RUN	MAX SPLIT
20W	4FT	4FT
36W	7FT	7FT
60W	12FT	12FT
90W	14FT	16FT
96W	16FT	20FT

\*RGB is at full power (all four LEDs are illuminated). Power consumption may vary based on color changing program.

\*\*Max split can be split more than once, without exceeding the max single run in each leg.

- Max Run refers to the total single run of tapelight that can go on a power supply. Max Split refers to the total amount of tapelight that can go on a driver if it were separated into two runs.
- Max Run lengths are calculated with 24V DC at the start of the tape run. Voltage drop may occur if not using proper wire gauge. Please refer to the Power Supply Wiring chart on page (3) of the Installation instruction sheet.
- Max Run lengths above are calculated with no more than 30% light loss from the start of the tape run to the end of the tape run for optimal light consistency. If run lengths are extended beyond the recommended lengths noted above, there will be inconsistent light output and voltage drop.



Display Supply & Lighting, Inc.

Display Supply & Lighting, Inc.  
 1247 Norwood Avenue  
 Itasca, IL 60143 USA  
 TF 800.468.1488  
 P 630.285.9660  
 F 630.285.9670  
 www.dslgroup.com

# CLLED Tapelight Series

24VDC Damp Location Listed

RGB/RGBW Accessories

Date: \_\_\_\_\_ Type: \_\_\_\_\_

Client: \_\_\_\_\_

Project: \_\_\_\_\_

## 24V Plug-In Power Supplies and Accessories



**Plug-and-Play Power Supply**  
120V/24VDC. Includes AC wall plug and female power output plug for easy installation. Class 2 listed. For use with 24V Tapelight.  
**36W: S-CLEDDRIVER36/24**  
**60W: S-CLEDDRIVER60/24**  
**96W: LLLVMODPOWER24V4A**



**Plug-and-Play 2-Way Splitter**  
Includes (1) male and (2) female connectors. Approximately 2' long.  
**S-CLEDDYCONN**



**Plug-and-Play 3-Way Splitter**  
Includes (1) male plug connector and (3) female plug connectors. Approximately 2' long.  
**S-CLEDDY3CONN**



**Plug-and-Play Power Supply Extension**  
Includes male and female plug connectors.  
**S-CLEDD48DRIVEXT**  
**S-CLEDD96DRIEXT**



**Input Power Connector**  
Includes (1) male plug connector and (1) male flex tape connector.  
**S-CLEDDPC**

## Hardwire Power Supplies and Accessories



**Hardwire Power Supply**  
120V/24VDC. Includes wire pigtailed on input and output sides. Must be maintained within an enclosure that meets local building codes and NEC (supplied by others). 1 ft. wire leads. Class 2 recognized. For use with 24V LED Tapelight.  
**S-CLEDDRIVER60/24HW**  
**S-CLEDDRIVER96/24V**



**RGB Male Power Connector**  
Includes wire pigtail end and (1) male flex tap connector. Use with RGB Controllers, LED Power Repeater and DMX Interface Module. Use with 24V RGB LED Tapelight only.  
**S-CLEDDPC24HWRGB**



**Female Connector**  
6" Connector includes wire pigtail end and (1) female plug connector. Used to add plug and play female connector to hardwire power supplies.  
**S-CLEDDFEMALEPC**



**RGB Female Power Connector**  
Includes wire pigtail end and (1) female flex tape connector; total 24-inch length. Used with RGB Controllers, LED Power Repeater and DMX Interface module. Use with 24V RGB LED Tapelight only.  
**S-CLEDDFPC24HWRGB**



**Male Connector**  
6" Connector includes wire pigtail end and (1) male plug connector. Used for easy plug in connection to plug and play power supply; wire end can be connected to controllers at the screw terminals  
**S-CLEDDMALEPC**



**Hardwire Class 2 Enclosed Driver - ENC Series**  
120V/24VDC. Dimmable Class 2 listed driver. Compact self-enclosed driver with two (2) knockouts. Auto reset and short circuit protection. Dimmable with standard MLV/Incandescent TRIAC (Leading Edge) dimmers; 8W Min. Load required for smooth dimming. TRIAC Driver dimming not recommended when using TW/RGB/RGBW controllers. For use with 24V LED Tapelight.  
**S-CLEDDRIVER60/24EN**  
**S-CLEDDRIVER96/24EN**



Display Supply & Lighting, Inc.

Display Supply & Lighting, Inc.  
1247 Norwood Avenue  
Itasca, IL 60143 USA  
TF 800.468.1488  
P 630.285.9660  
F 630.285.9670  
www.dslgroup.com

Copyright © 2022 Display Supply & Lighting, Inc. All rights reserved. All brand or product names are trademarks or registered trademarks of their respective owners. Due to continuous improvements and innovations, specifications may change without notice.

# CLLED Tapelight Series

12VDC Damp Location Listed

RGB/RGBW Accessories Accessories

Date: \_\_\_\_\_ Type: \_\_\_\_\_

Client: \_\_\_\_\_

Project: \_\_\_\_\_

## Linear Connectors



### RGB Bridge Connector

Blank section used to bridge gaps where LEDs are not necessary.

Use with RGB & Tunable white LED Tapelight only.

**S-CLLEDRGB2CONN - 2"**

**S-CLLEDRGB6CONN - 6"**

**S-CLLEDRGB12CONN - 12"**



### Cross Connector

Used to connect up to four (4) RGB tapelight segments. May be cut to create 2-way "L" connection or 3-way "T" connection. Use with RGB and tuneable white LED Tapelight only.

**S-CLLEDRGBCONN**



### Short Female-to-Female RGB Connector

Used to connect male to female connectors.

Use with RGB and tuneable white LED Tapelight only.

**S-CLLEDRGBFFCONN**

## Controllers / Accessories



### RGB/RGBW 28-Key Remote Controller

8-Key RF Remote for color, speed, and brightness control. Seven (7) programmable scenes. 20AMP Max.

6-7/8"L x 1-3/4"W x 1-3/16" D

Use with 12V or 24V RGB/RGBW LED Tapelight  
**LTRGBCONT**



### DMX 512 CV Decoder

Designed to convert universal DMX 512 signal to PWM signal when used with a DMX 512 console.

Use with non-dimming tapelight power supplies.

6-3/16" L x 3-1/8" W x 1-5/8" D.

Use with 12V or 24V LED Tapelight; can control white, single color or RGB LEDs

**LTDMXINTEF-840-6A**



### LED Power Repeater

Enables synchronized control of multiple runs from one controller.

Use with 12V or 24V Static Color, TW, RGB or RGBW LED Tapelight

**LTPOWERREP**



### Switch, LED Tapelight IR Cabinet

Allows on/off switching functionality for use with cabinet doors. 36W MAX. 1-1/2"L x 1-3/16"W x 5/16"H.

**S-CLLEDTLPICB**



### Switch, LED Tapelight IR Wireless Waving

Allows on/off switching functionality by waving an object within the IR Field. 36W MAX.

1-1/2" L x 1-3/16" W x 5/16" H.

**S-CLLEDTLPIWV**



Display Supply & Lighting, Inc.

Display Supply & Lighting, Inc.  
1247 Norwood Avenue  
Itasca, IL 60143 USA  
TF 800.468.1488  
P 630.285.9660  
F 630.285.9670  
www.dslgroup.com

Copyright © 2022 Display Supply & Lighting, Inc. All rights reserved. All brand or product names are trademarks or registered trademarks of their respective owners. Due to continuous improvements and innovations, specifications may change without notice.

# CLLED Tapelight Series

12VDC Damp Location Listed

RGB/RGBW Mounting Accessories

Date: \_\_\_\_\_ Type: \_\_\_\_\_

Client: \_\_\_\_\_

Project: \_\_\_\_\_



**Aluminum Mounting Channel**  
Provides excellent heat sinking and protection to the LEDs while ensuring a clean, straight run.  
6' long x 5/8" wide x 1/4" tall



**S-CLEEDCHANNELSTD** 6' Standard Channel, Aluminum

**S-CLEEDCHANSTDB** 6' Standard Channel, Black

**S-CLEEDCHANANGLE** 6' 45° Angled Channel, Aluminum

**S-CLEEDCHANANGLEBL** 6' 45° Angled Channel, Black

**S-CLEEDCHANRECESSED** 6' Recessed Channel, Aluminum

**S-CLEEDCHANREC-BL** 6' Recessed Channel, Black

**S-CLEEDCHANRND** 6' Round Channel, Aluminum

**S-CLEEDCHANRNDDB** 6' Round Channel, Black

**S-CLEEDCHANDBL** 6' Double Wide Channel, Aluminum

**S-CLEEDCHANDBLB** 6' Double Wide Channel, Black

**S-CLEEDCHANDEEP** 6' Deep Standard Channel, Aluminum

**S-CLEEDCHANDEEPB** 6' Deep Standard Channel, Black

**S-CLEEDCHANEDGE** 6' Ceiling Edge Mount Channel, Aluminum

**S-CLEEDCHANEDGEGB** 6' Ceiling Edge Mount Channel, Black

**S-CLEEDCHANEDGEPE** 6' Ceiling Edge Mount Channel, White

**S-CLEEDCHANTOE** 6' Toe Kick Channel, Aluminum

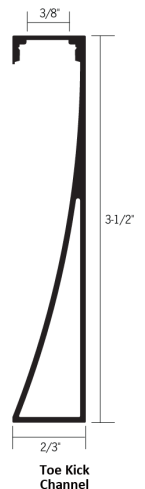
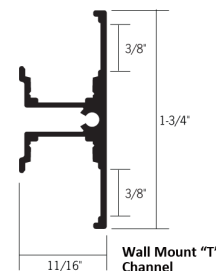
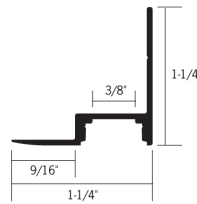
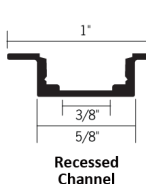
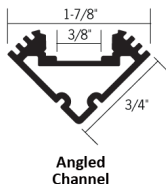
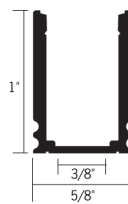
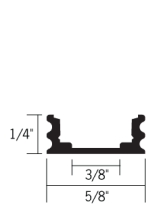
**S-CLEEDCHANTOEB** 6' Toe Kick Channel, Black

**S-CLEEDCHANTOEP** 6' Toe Kick Channel, White

**S-CLEEDCHANT** 6' Wall Mount "T" Channel, Aluminum

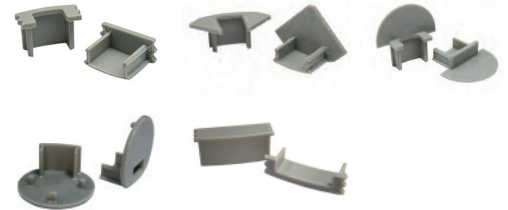
**S-CLEEDCHANTB** 6' Wall Mount "T" Channel, Black

**S-CLEEDCHANTP** 6' Wall Mount "T" Channel, White



**End Caps**

Creates a clean finish to the mounting channel.  
Set of two (2) end caps; one open, one closed.



**S-CLEEDCHANSTDEND** Standard, Grey

**S-CLEEDCHANSTDENDB** Standard, Black

**S-CLEEDCHANNEL-ANGEND** Angled, Grey

**S-CLEEDCHANNEL-ANGENDB** Angled, Black

**S-CLEEDRECHANEND** Recessed, Grey

**S-CLEEDRECHANENDB** Recessed, Black

**S-CLEEDCHANENDRND** Round, Grey

**S-CLEEDCHANENDRNDB** Round, Black

**S-CLEEDCHANENDDBL** Double Wide, Grey

**S-CLEEDCHANENDDBLB** Double Wide, Black

**S-CLEEDCHANDEEPEND** Deep Standard, Grey

**S-CLEEDCHANDEEPENDB** Deep Standard, Black



Display Supply & Lighting, Inc.  
1247 Norwood Avenue  
Itasca, IL 60143 USA  
TF 800.468.1488  
P 630.285.9660  
F 630.285.9670  
www.dslgroup.com

Copyright © 2022 Display Supply & Lighting, Inc. All rights reserved. All brand or product names are trademarks or registered trademarks of their respective owners. Due to continuous improvements and innovations, specifications may change without notice.

# CLLED Tapelight Series

12VDC Damp Location Listed

RGB/RGBW Accessories

Date: \_\_\_\_\_ Type: \_\_\_\_\_

Client: \_\_\_\_\_

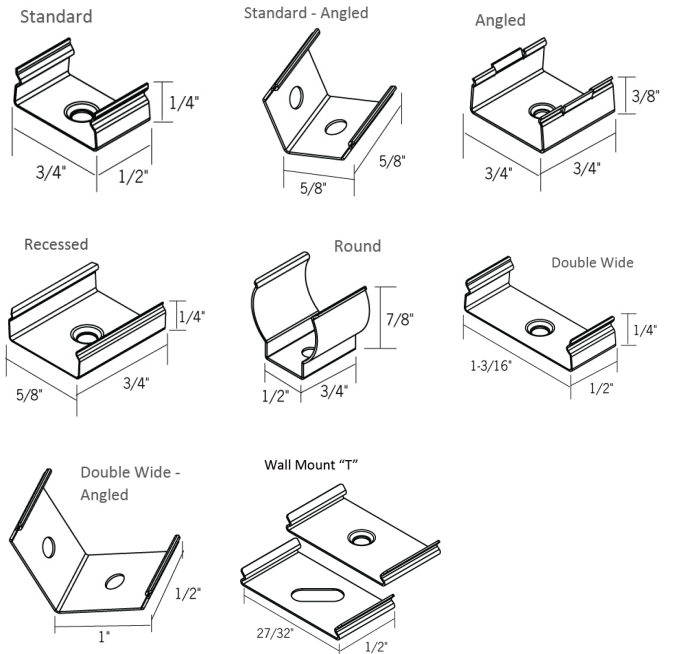
Project: \_\_\_\_\_



**Mounting Clips:**

(4) clips and  
 (4) Philips head screws per package.  
 24" Between clips recommended for most applications.

- S-CLEDDCHANCLIP-STD** Standard Channel Mounting
- S-CLEDDCHANSTDANGLE** Standard Channel, Angled Mounting
- S-CLEDDCHANCLIP-ANG** Angled Channel Mounting
- S-CLEDDCHANCLIP-REC** Recessed Channel Mounting
- S-CLEDDCHANCLIP-RND** Round Channel Mounting
- S-CLEDDCHANCLIP-DBL** Double Wide Channel Mounting
- S-CLEDDCHANCLIP-DBLANG** Double Wide Channel, Angled Mounting
- S-CLEDDCHANTCLIP** Wall Mount "T" Channel Mounting Clip Set



**Acrylic Diffusion Lens**

For use with mounting channel. Provides extra protection for the LEDs as well as diffusion to reduce glare.

- S-CLEDDIFFCLEAR** - Clear Lens
- S-CLEDDIFFUSERNEW** - Frosted Lens
- S-CLEDDIFFDBL** - Double Wide Clear Lens
- S-CLEDDIFFDBLF** - Double Wide Frosted Lens



Display Supply & Lighting, Inc.

Display Supply & Lighting, Inc.  
 1247 Norwood Avenue  
 Itasca, IL 60143 USA  
 TF 800.468.1488  
 P 630.285.9660  
 F 630.285.9670  
 www.dslgroup.com

Copyright © 2022 Display Supply & Lighting, Inc. All rights reserved. All brand or product names are trademarks or registered trademarks of their respective owners. Due to continuous improvements and innovations, specifications may change without notice.