

2823-01

## Brief description

The ZP785-3 Analogue Addressable Callpoint is used to manually initiate a fire alarm. It is designed for indoor use and may be surface or recess mounted.

The red LED on the front indicates the status of the ZP785-3 (off = normal, flashing = active).

## Specifications

### General information

Designation	ZP785-3 Analogue Addressable Callpoint
Model number	ZP785-3
Part number	2009

### Environmental

Application	Indoor use
Environmental rating	IP24D
Operating temperature range	-10 to 50 °C
Operating humidity range	20% to 95% RH (non-condensing)

### Primary supply

Operating voltage	19.5 to 20.5 VDC pulsed address line
Current (quiescent)	400 µA
Current (activated)	450 µA

### Mechanical details

Construction	Moulded ABS
Colour	Red
Dimensions (W x H x D)	89 x 93 x 27.5 mm
Weight	125 g
Mounting method	Surface or recessed

### Accessories

- 4-way connector (included)
- Test key (included)
- Spare glass: Z-EN54-G
- Surface mounting box: Z-CPSB-1
- Recessed mounting: 75 x 75 mm industry standard
- Electrical box

### Manufacturer traceability

A barcode label is affixed to each product (see example below). This label reflects, amongst other things, the date of manufacture of the product in the form YYDDD.



These numbers are interpreted as follows:

YY = year of manufacture

DDD = day of manufacture

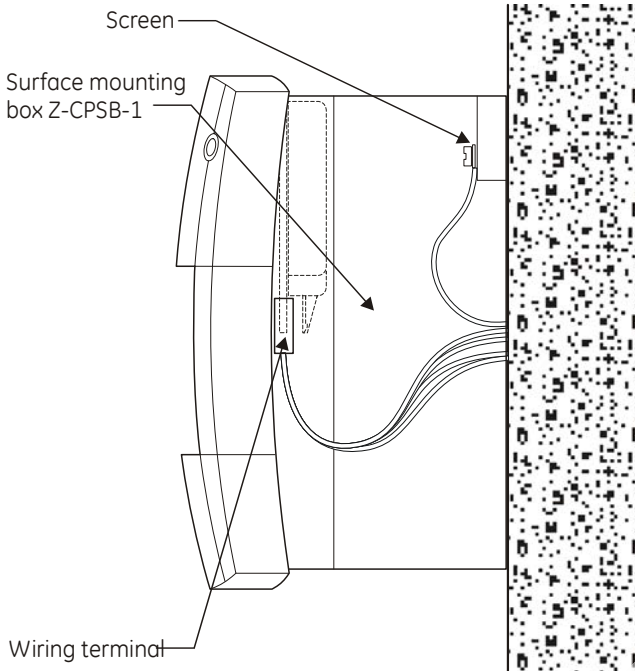
For example the numbers 07134 would indicate that the product was manufactured on the 134<sup>th</sup> day of the year 2007, that is 14<sup>th</sup> May 2007.



## Installation instructions

### Surface mounting

Figure 1: Using Z-CPSB-1 surface mounting box

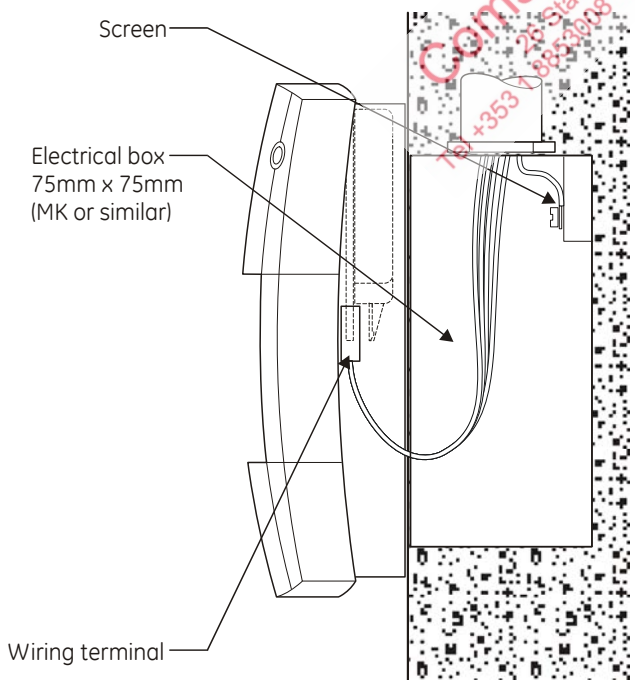


Surface mount side view

3952-01

### Recessed mounting

Figure 2: Using standard electrical box



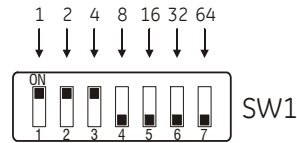
Recess mount side view

2822-01

## Address switch settings

SW1 is used to assign device addresses. Each switch segment has a decimal value as shown in Figure 3 below.

Figure 3: ZP785-3 address switch



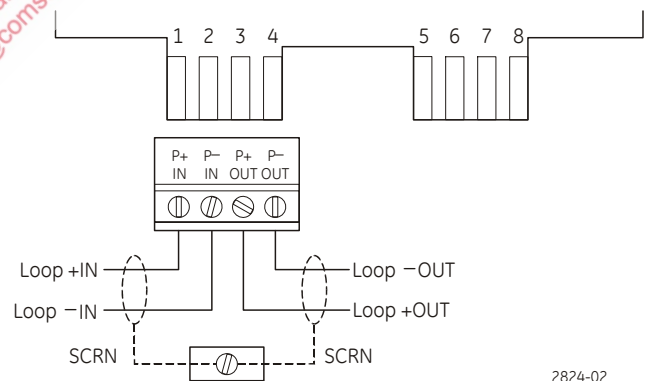
Device address = 007 2825-01

The sum of all the switch segments in the ON position determines the device address. You can set the device address for any value between 001 and 127 that is not used by another device on the same loop. For example, to select a device address of 007 you must set SW1-1, SW1-2, and SW1-3 to the ON position and the remaining switch segments to the OFF position.

## Wiring diagram

Figure 4 shows the terminal block connections for wiring the ZP785-3.

Figure 4: ZP785-3 wiring diagram



2824-02

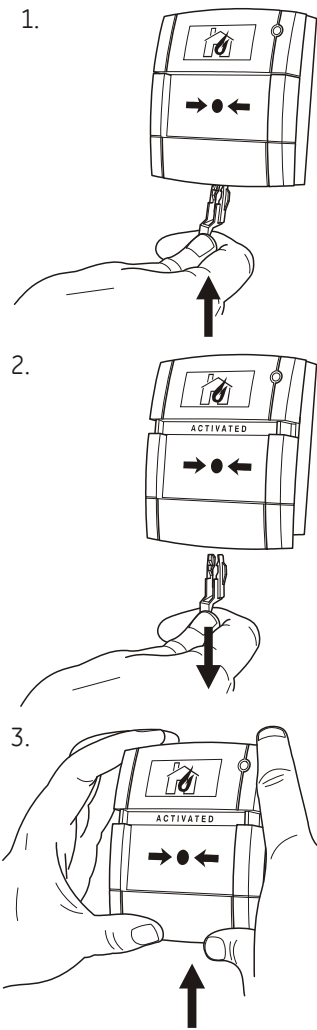


Figure 5 shows how to:

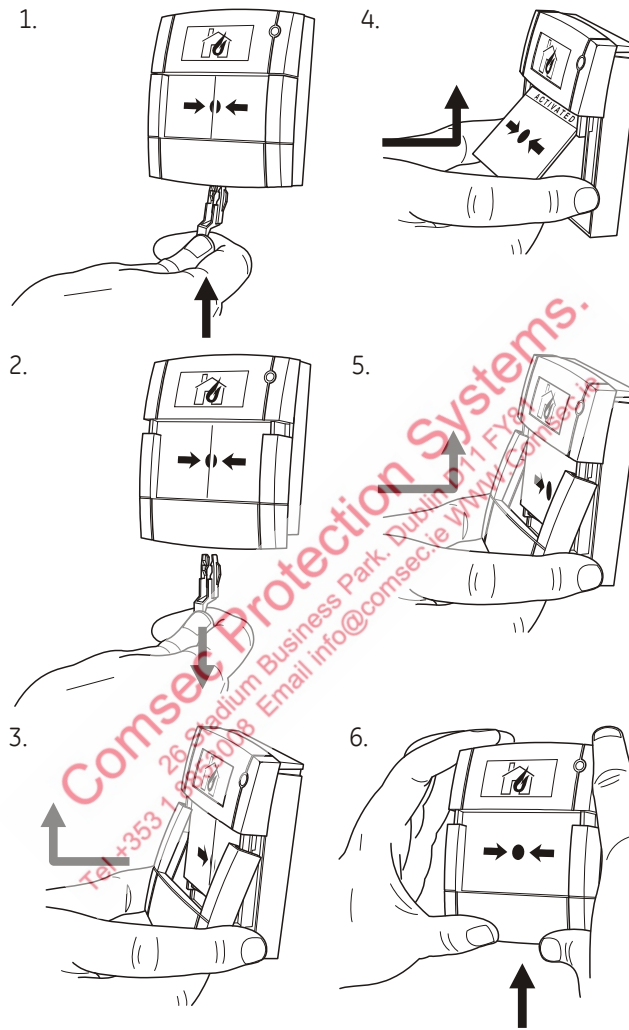
- Perform a test
- Replace the glass/resettable element
- Reset the device

Figure 5: Operating functions

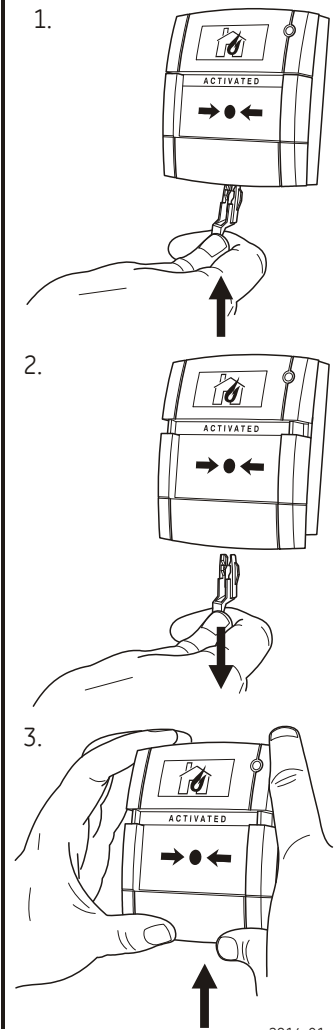
To Test



To Replace Glass / Resettable Element



To Reset



2814-01



**Comsec Protection Systems.**  
26 Stadium Business Park, Dublin D11 FY81  
Tel +353 1 8853008 Email [info@comsec.ie](mailto:info@comsec.ie) [www.comsec.ie](http://www.comsec.ie)