

**CARVIN**  
*audio*



**QX15A**

1000W ACTIVE LOUDSPEAKER



## INTRODUCTION

The QX15A is designed to stand alone as a full range sound reinforcement loudspeaker, full range stage monitor, or as a main with our TRx3118A subwoofer for a three-way extended low end system. Designed for both permanent and portable applications, it comes with 3 fly points, rubber footpads, and a 1.38-inch pole mount cup. The QX15A is ideal for Club Systems, Houses of Worship, Auditoriums, Band PA and Satellite extension of an existing sound system.

## QX15A

Incredible sound and easy operation make the QX15A our finest 15-inch active loudspeaker. Premium DSP processing from Analog Devices™ delivers controlled sound from its 4 selections of normal intelligent sound, monitor playback, DJ, and external sub functions.

2 amplifiers provide enhanced intelligibility, one for bass and the other for high frequencies plus power to spare from the 1000 watt output. The QX15A's deep, rich bass and crystal-clear high-end projects far to the rear with intelligent articulation so everyone can hear clearly.

3 different inputs are offered for Mic, Line, or BT operations with an extended range Bluetooth™, streaming stereo wirelessly from your phone or tablet. Pair a second QX15A for a true wireless stereo setup or mono operation that doesn't require a second cable to connect.

The universal power supply adapts to all countries for 115 or 230 VAC 50-60 Hz operation. The QX15A can be used with a stand as a main, as a floor monitor, or installed from its 3-point mounting system. Its precision assembly and rugged design, which includes a water-resistant molded enclosure and powder coated steel grill is ideal for touring.

The QX15A is a premium, universal powered loudspeaker that projects distortion-free, high fidelity audio to your audience.



QX15A



QX15A

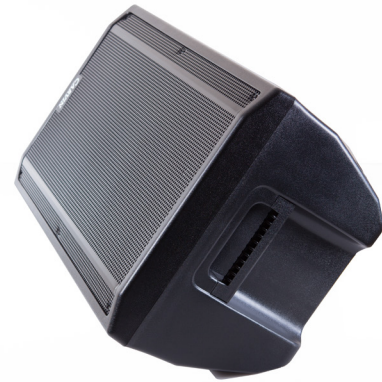
## WARRANTY

This CARVIN AUDIO product is guaranteed in normal use to be free from electrical and mechanical defects for a period of one year (electronics) and three years (loudspeakers and speaker cabinet) from date of purchase. Retain proof of purchase. This warranty is in lieu of any and all other guarantees or warranties, expressed or implied. There shall be no recovery for any consequential or incidental damages.

QX15A SPECIFICATIONS

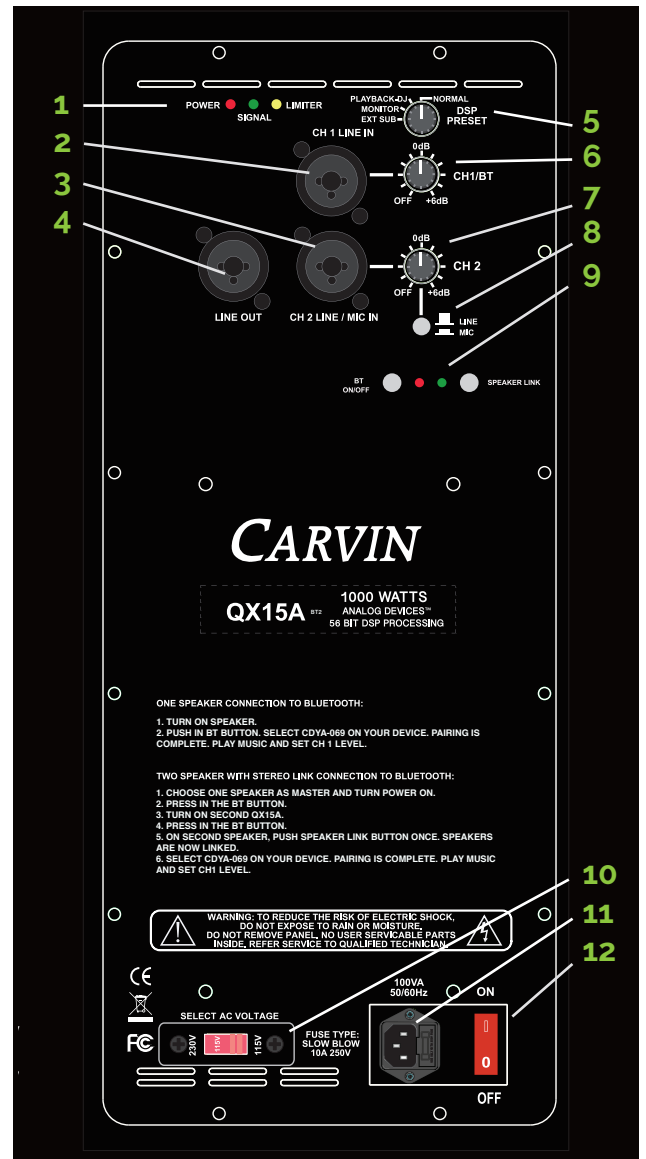
- » System Type : 15-Inch 2-way, Active Bass Reflex
- » Frequency Response : 54Hz-18kHz (-10dB) 62Hz-16kHz (-3dB)
- » Power : 1000W Program
- » Coverage Pattern : Main 90x60 Monitor 60x90
- » Sensitivity (1W/1m) : 98dB
- » Maximum SPL : 130dB
- » Maximum Input Signal : +12dBu
- » LF : 15-Inch Woofer 4 Ohms
- » HF : 1.74-Inch 8 Ohms
- » Enclosure: Virgin polypropylene
- » Color: Black
- » Grill: Black powder coated 16-ga steel with cloth backing
- » Transport : 2 Recessed handles
- » Pole Mount : 1.38-inch pole mount cup with thumb screw
- » Suspension points : 3 points using M8-1.25 x 30mm
- » AC Mains Input : 100V-230V (50-60Hz)
- » Net Weight : 42lbs
- » Dimensions : 17.75-Inch W x 15.5-Inch D x 27.5-Inch H

QX15A



QX15A Rear Panel Features

- » 1. System LED indicators. The red Power LED shows the user that the system is powered on. The green Signal LED indicates that an audio signal is present in the system. The yellow Limiter LED indicates that the DSP limiter is engaged and is protecting the amplifier and speakers from overload.
- » 2. CH1 LINE IN. This combo XLR jack is the audio input for CH1. The input will accept both XLR and 1/4-inch instrument cables.
- » 3. CH2 LINE IN/MIC IN. This combo XLR jack is the audio input for CH2. The input will accept both XLR and 1/4-inch instrument cables. Use this channel when connecting a microphone or instrument directly into the speaker. Refer to #8 to set the correct channel gain.
- » 4. LINE OUT. Use this output to send CH1 & CH2 audio signals to another main loudspeaker or subwoofer such as a second QX15A or TRx3118A subwoofer. Audio from the Bluetooth connection is also sent to the LINE OUT.
- » 5. DSP PRESETS. Choose from four different DSP settings depending on the use of the loudspeaker. NORMAL mode is designed for live audio and gives the engineer an uncolored platform to create the perfect mix regardless of the genre. PLAYBACK/DJ is a contoured setting to accommodate recorded playback music. The MONITOR setting employs both a high pass filter and low pass filter to help eliminate unwanted feedback while still providing the necessary bandwidth when using the loudspeaker as a stage monitor. EXT SUB preset has the same frequency response as NORMAL but with an 80Hz high pass filter so the loudspeaker can be used with an external subwoofer such as the TRx3118A.
- » 6. CH1 LEVEL/Bluetooth Level. Use this control to adjust the level of the incoming signal to the loudspeaker. The maximum input signal is +12dBu. If distortion is heard, lower the mixer output level and turn up the CH1 LEVEL. When using the Bluetooth feature, control the volume level using this control.
- » 7. CH2 LEVEL. Use this control to adjust the level of the incoming signal to the loudspeaker. The maximum input signal is +12dBu. If distortion is heard, lower the mixer output level and turn up the CH2 LEVEL.
- » 8. LINE/MIC. When button is pressed in, the gain of CHANNEL 2 increases to accommodate a low level signal from a microphone or instrument.
- » 9. Bluetooth ON/OFF: Choose between one speaker and two speaker (stereo) operation. **For one speaker:** 1. Turn on speaker. 2. Push in BT button. Select **CDYA-069** on your device. Pairing is complete. Play music and set CH 1 level. **For two speakers (Stereo) :** 1. Choose one speaker as MASTER and turn power on. 2. Press in the BT button. 3. Turn on second QX15A. 4. Press in the BT button. 5. On second speaker, push Speaker Link button once. Speakers are now linked. 6. Select **CDYA-069** on your device. Pairing is complete. Play music and set CH1 Level. Audio from the Bluetooth connection is also sent to the LINE OUT. Only audio streamed from the connected device is sent through Bluetooth to the linked speaker.
- » 10. AC Mains Voltage Selector allows the user to choose either 115V/60Hz or 230V/50Hz AC mains voltage.
- » 11. AC Mains plug and fuse holder.
- » 12. POWER ON/OFF. Turns ON and OFF the loudspeaker.



QX15A