

CALA 2022





A R Q M A T

CALA COLLECTION



CALA is a versatile chair that adapts to different work spaces, with a highly comfortable enveloping backrest.

CALA es una silla polivalente que se adapta a los distintos espacios de trabajo, muy confortable y con un respaldo envolvente de gran confort.

CALA s'agit d'une chaise polyvalente qui s'adapte à différents espaces de travail, très confortable et avec un dossier qui l'enveloppe de façon très confortable.





It provides infinite customization possibilities thanks to the combination of finishes on its smooth upholstered shell or Diamond stitching, with different wooden or aluminum bases, gliders or wheels for all types of environments and projects.

Ofrece infinitas posibilidades de personalización gracias a la combinación de acabados en su carcasa tapizada lisa o costura Diamond, con diferentes bases de madera o de aluminio, con topes o ruedas para todo tipo de ambientes y proyectos.

Offrant des possibilités de personnalisation infinies grâce à la combinaison de finitions de sa coque rembourrée lisse ou ses coutures diamant, avec différentes bases en bois ou en aluminium, avec des butées ou des roues pour tous types d'environnements et de projets.





TECHNICAL INFO

CALA Armchair



Ref: CL712CA
H: 910 W: 600 D: 650



Ref: CL712BD2
H: 860/960 W: 600 D: 650



Ref: CL712BE4
H: 860/960 W: 600 D: 650



Ref: CL712AC5
H: 860/960 W: 600 D: 650



Ref: CL712AB4
H: 860/960 W: 600 D: 650



Ref: CL712AF2
H: 860/960 W: 600 D: 650



Ref: CL712AE4
H: 860/960 W: 600 D: 650

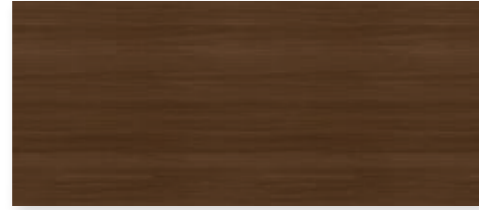


A R Q M A T

FINISHINGS



WALNUT (NM)



WENGUE (WE)



BLACK (NT)

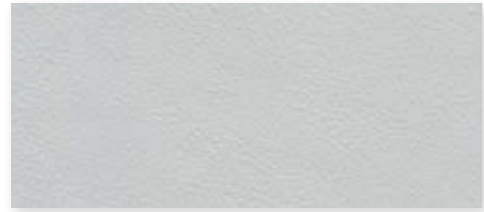


ESPRESSO (EM)



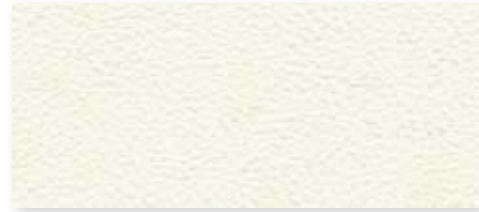
NATURAL OAK (RO)

LEATHER FINISHINGS



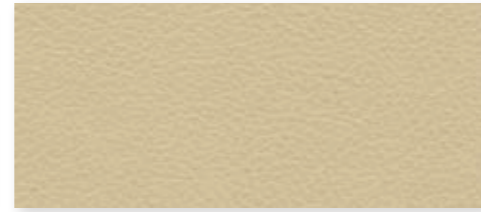
ICE

(PI15) - (L15)



WHITE

(PI07) - (L07)



IVORY

(PI04) - (L04)



STONE GREY

(PI09) - (L09)



UMBER

(PI17) - (L17)



CAMEL

(PI12) - (L12)



PUMPKIN

(PI16) - (L16)



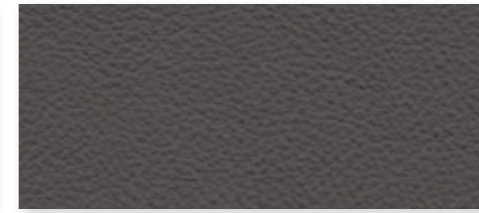
LIGHT BROWN

(PI02) - (L02)



DARK BROWN

(PI06) - (L06)



ANTHRACITE

(PI08) - (L08)



GREY

(PI11) - (L11)



BORDEAUX

(PI13) - (L13)



RED

(PI05) - (L05)



GREEN

(PI00) - (L00)



BLUE

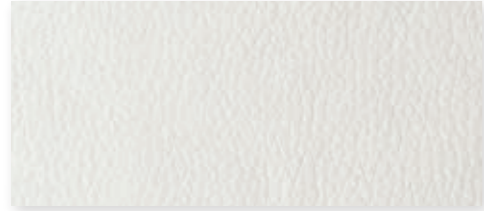
(PI03) - (L03)



BLACK

(PI01) - (L01)

FINISHINGS



WHITE (PO07)



IVORY (PO04)



CAMEL (PO12)



STONE GREY (PO09)



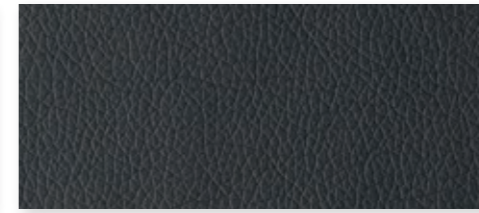
LIGHT BROWN (PO02)



BORDEAUX (PO13)



GREY (PO11)



ANTHRACITE (PO08)



BLUE (PO03)



RED (PO05)



DARK BROWN (PO06)



GREEN (PO00)



BLACK (PO01)

BRONX FINISHINGS



BEIGE (TB34)



CAMEL (TB39)



TAUPE (TB32)



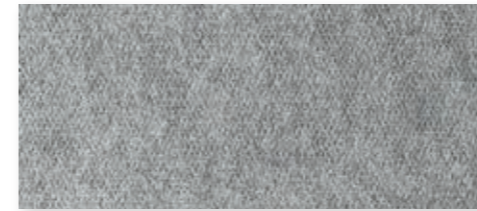
BORDEAUX (TB30)



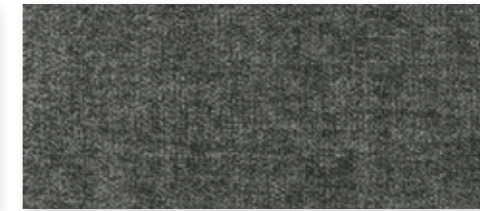
ORANGE (TB42)



YELLOW (TB40)



LIGHT GREY (TB37)



ANTHRACITE (TB38)



BROWN (TB36)



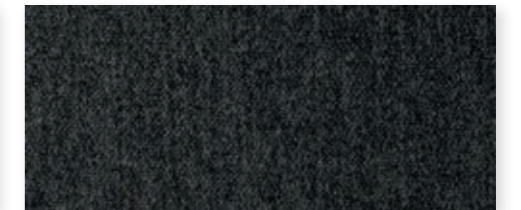
TURQUOISE (TB41)



ASH (TB35)

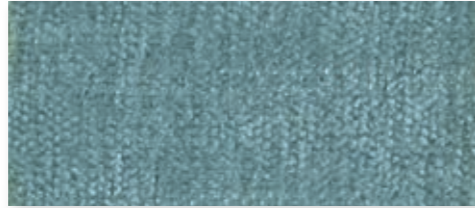


DARK GREY (TB33)

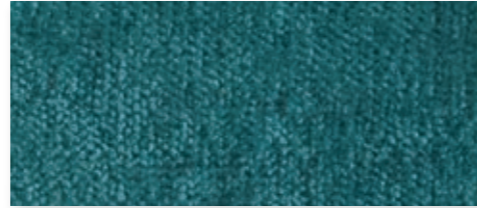


BLACK (TB31)

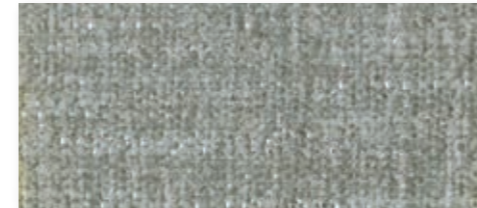
FINISHINGS



SKY (TS70)



TURQUOISE (TS73)



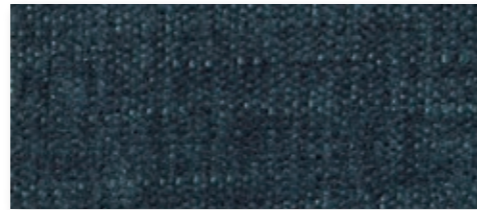
LIGHT GREY (TS72)



MUSTARD (TS78)



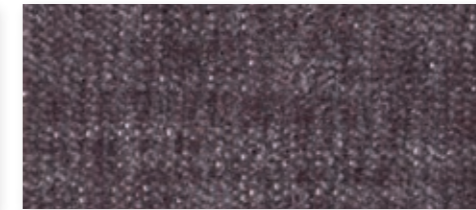
MOUSE (TS71)



OCEAN (TS76)



TRUFFLE (TS74)



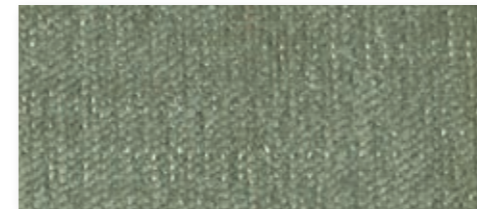
LAVENDER (TS82)



PINK (TS79)



RED (TS75)



GREEN (TS77)



FOREST (TS80)



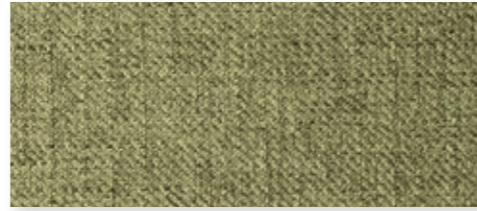
BLACK (TS81)

LIVERPOOL FINISHINGS

FINISHINGS



YELLOW (TL55)



CITRIC (TL59)



RED (TL50)



MOKA (TL56)



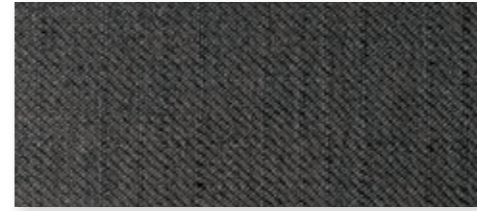
BLACK (TL51)



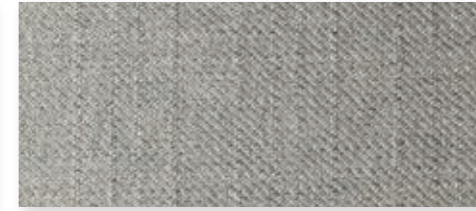
ASH (TL60)



CREAM (TL61)



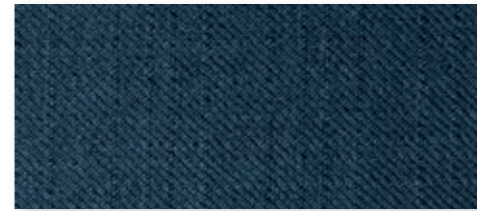
ANTHRACITE (TL58)



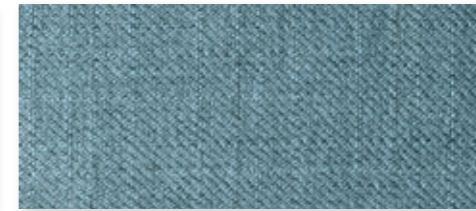
FOG (TL52)



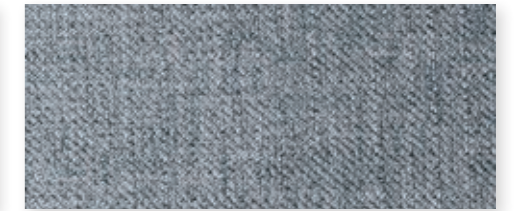
PEARL (TL54)



OCEAN (TL53)



SKY (TL57)



SAFIRA (TL62)



info@arqmat.com
www.arqmat.com