

Universal Cork  
Large Cork  
Extra Large Cork  
Extreme Cork

## PRODUCT SPECIFICATION

46/UVC	Universal Cork
46/LC	Large Cork
46/XL-CORK	Extra Large Cork
46/EXC	Extreme Cork

## Features & Benefits

- Refreshable cork fins
- Constructed from Food Grade ABS/TPR

[illegible]

Des.Reg.Pat.

Universal Cork  
Large Cork  
Extra Large Cork  
Extreme Cork

## PRODUCT CARE GUIDE

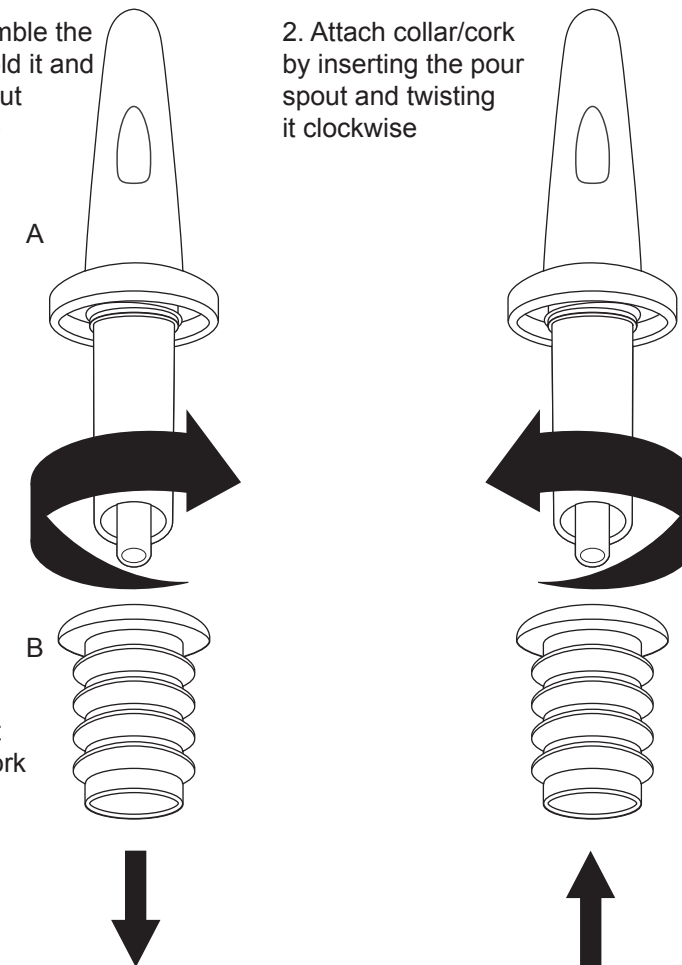
## How To Disassemble

## Refreshing corks

1

1. To disassemble the collar/cork, hold it and twist pour spout anti-clockwise

2. Attach collar/cork by inserting the pour spout and twisting it clockwise



A. Pour Spout  
B. Collar & Cork

**WARNING**  
NEVER CLEAN WITH  
ABRASIVE MATERIAL  
OR HARSH CLEANING  
CHEMICALS/SOLVENTS  
THOROUGHLY DRY  
AFTER CLEANING



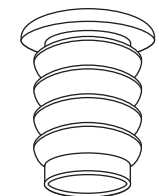
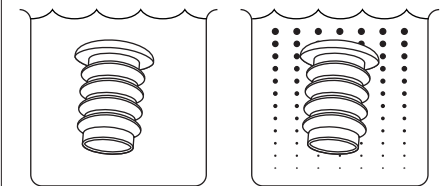
**WARNING**  
NEVER PLACE ANY  
PART INTO A  
GLASS WASHER,  
DISH WASHER OR  
BOILING WATER



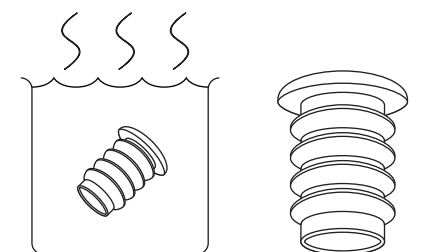
3

All **Collar/Corks**  
can be cleaned in  
warm/soapy water

Alternatively all  
**Collar/Corks**  
can be cleaned in  
soda water



After extended use  
the cork fins may  
bend upwards



To refresh, place collar/cork in hot water for 5 seconds

The cork fins  
will return to  
normal position

**NOTE:** After prolonged use should fins not reset, the collar/cork will need to be replaced as part of normal wear and tear



[www.uberbartools.com](http://www.uberbartools.com)



www.uberbartools.com