

# ACM-125C-1 Remote Control

For use with: ACM-125C, ACM-197C, ACM-198C

## Pairing Remote with Pool Lights ACM-197C, ACM-125C, ACM-198C:

*Batteries not included*

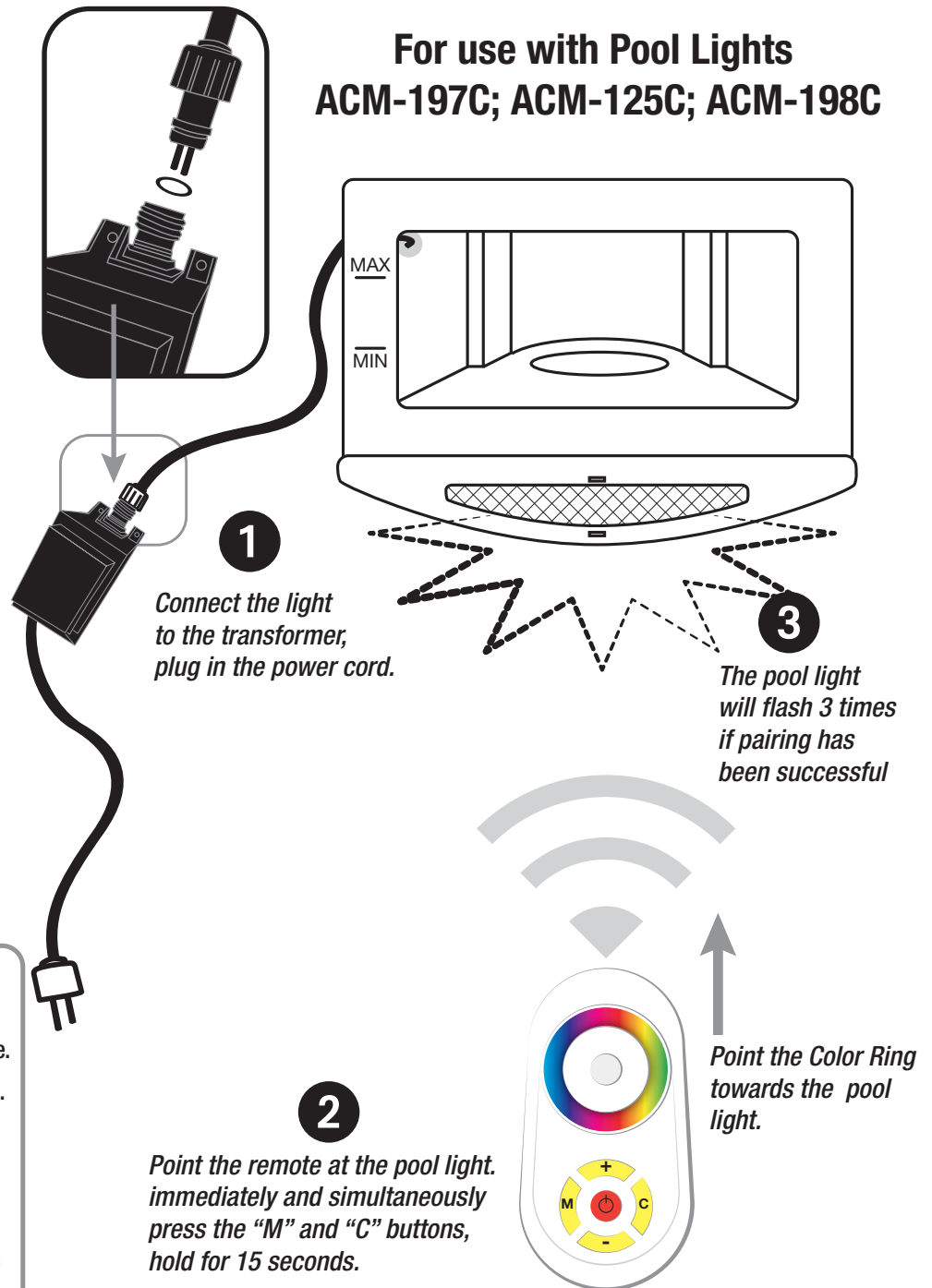
After installing two new "AAA" batteries in the remote control, press the **RED POWER** button. The LED light located in the center of the color ring will **flash BLUE** (LED light does not remain illuminated). If the LED light does not flash, replace the batteries.

- 1** Connect the light to the transformer and plug the power cord into a GFCI outlet. The pool light will turn on.
- 2** While pointing the remote at the pool light (not the transformer) **immediately and simultaneously** press the "M" and "C" buttons, hold for 15 seconds.
- 3** If the **pool light flashes 3 times** the pairing has been successful, if not, **unplug the pool light from the GFCI outlet, wait 15 seconds** before plugging the light back in and trying again.

### Tips:

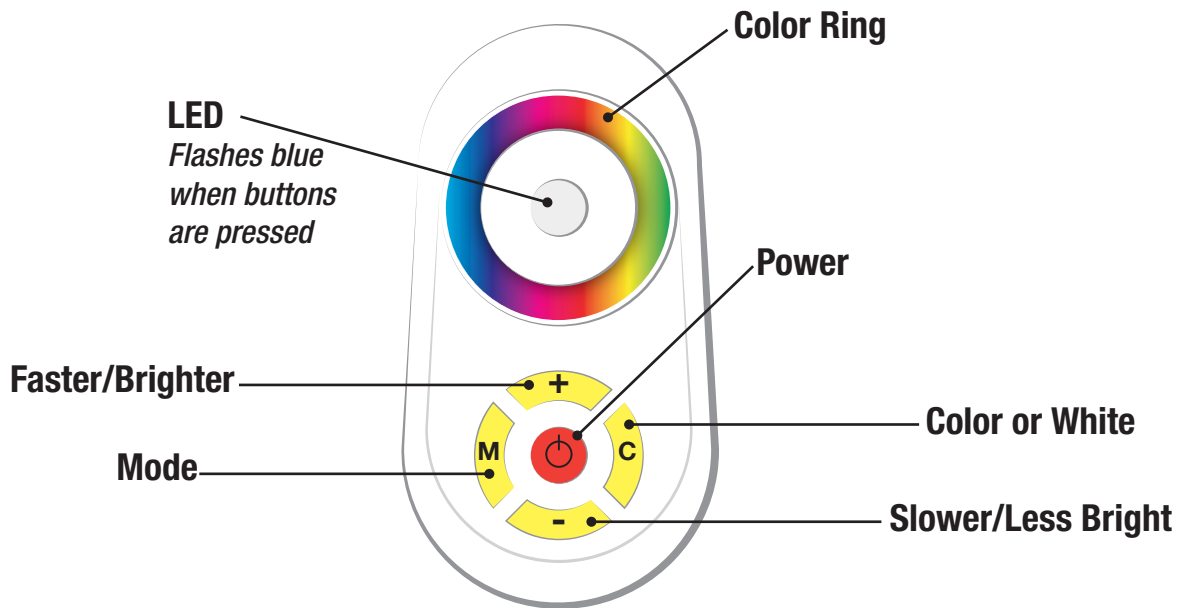
- You can be a couple of feet away from the pool light when pairing for the first time.
- Pairing does not have to be done at night.
- It may take several tries to pair the remote to the pool light.
- **IMPORTANT:** unplug the power cord from the GFCI outlet for 15 seconds between every try in order for the pool light to reset.
- Press the **RED POWER** button to turn the pool light on and off.

## For use with Pool Lights ACM-197C; ACM-125C; ACM-198C



# ACM-125C-1 Remote Control

For use with: ACM-125C, ACM-197C, ACM-198C



## MODE BUTTONS:

Button	Press	Mode
M	1 time	Gradual
M	2 times	Wave
M	3 times	Jumping
M	4 times	Fading
M	5 times	Wave + Jumping
C	1 time	White
C	2 times	Color Ring
Red		<b>ON/OFF</b>

### Modes:

- Once the MODE has been chosen, the “+” and “-” buttons can be used to adjust the speed (for “M”) or the brightness (for “C”) for a total of 8 levels.
- Touch the top of the LED on remote to resend the last programmed command.

### Color Ring:

- The color ring will be active once the “C” button has been pressed twice. By pressing a color on the color ring you will get that color. If you move around the color ring you will see the color change as you go.