

Fabric Requirements

Always pre-wash your fabric before cutting. All natural fiber materials (and many synthetics) undergo shrinkage during their first wash and can change in texture and handfeel. If you want your garment to be washable after it is sewn (without shrinking), pre-washing is a must. Giving the washed material a light press prior to cutting will ensure your paper pattern pieces can lay smoothly on top.

The fabric requirement below allow for an overage of 10% to accomodate some fabric shrinkage and wiggle room. Please consider that all fabrics shrink differently, and if using a material that shrinks significantly, order extra so that you have enough fabric after pre-washing.

IMPERIAL (in/yd)	XXS/XS	S/M	L/XL	1X/2X	3X/4X	5X/6X
56" wide fabric	0.7	0.8	1	1.3	1.5	1.6
44" wide fabric	0.9	1.2	1.4	1.6	1.9	2.2
METRIC (cm/m)	XXS/XS	S/M- L/XL	L/XL	1X/2X	3X/4X	5X/6X
142cm wide fabric	0.7	0.8	0.9	1.2	1.4	1.5
112 cm wide fabric	0.8	1.1	1.3	1.5	1.7	2

Cutting Layouts

The cutting layouts provided utilize flat cutting to maximize efficiency. Please allow for extra fabric when cutting on fold or when using napped or printed fabrics.



Fabric
either side facing up



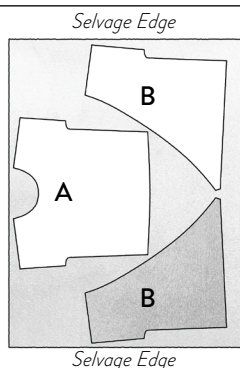
Pattern Piece
right side facing up



Pattern Piece
wrong side facing up

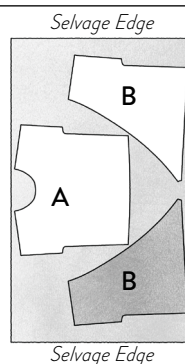
44" (112 CM) WIDE FABRIC

SIZES: XXS/XS



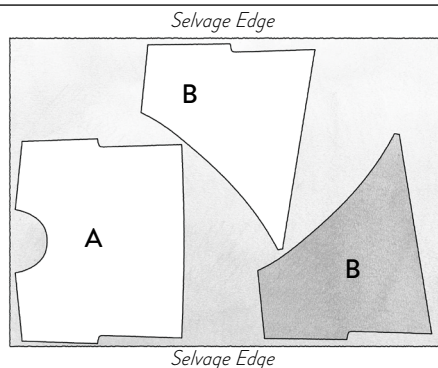
56" (142 CM) WIDE FABRIC

SIZES: XXS/XS - L/XL



44" (112 CM) WIDE FABRIC

SIZES: S/M - 5X/6X



56" (142 CM) WIDE FABRIC

SIZES: 1X/2X - 5X/6X

