



**THE BEST ROOM IN THE HOUSE
ISN'T IN THE HOUSE AT ALL**



WARNING - PROPOSITION 65

This product is designed to operate with one of the following fuel sources: Liquid Propane or Natural Gas. The fuel used to operate this product, and the products of combustion of such fuel, can expose you to chemicals including Benzene which is known to the State of California to cause cancer, birth defects and other reproductive harm and Carbon Monoxide which is known to the State of California to cause birth defects or other reproductive harm. (For more information go to: www.p65Warnings.ca.gov.)

**2020
PRODUCT GUIDE**

SANCTUARY SERIES



Constructed of incredibly strong, weather resistant, long lasting GFRC (Glass Fiber Reinforced Concrete)

BUILT IN THE U.S.A.



Ventilation

IGNITION SYSTEMS

AWS

ALL WEATHER ELECTRONIC IGNITION SYSTEM

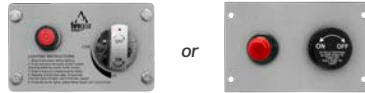


MODELS AVAILABLE: SAN2 & 3

Full electronic ignition system (requires 120Vac)
Ships with a GOE-30VDC power supply
Comes with an ON/OFF remote for easy ignition
Variable flame adjustment using a key valve

TMSI

THERMOCOUPLE MANUAL SAFETY with SPARK IGNITION



MODELS AVAILABLE: SAN1, 2 & 3

Variable flame adjustment using a control knob
Battery operated manual spark ignition button
Safety valve turns gas off in case of flame loss

MT

MATCH THROW



MODELS AVAILABLE: SAN2 & 3

Variable flame adjustment using a key valve
Easy light with a butane lighter or match

MODELS

SANCTUARY 1



color shown: RAVEN

Ignition Systems: **TMSI**
Dimensions: 56" W x 16" H x 38" D
Outdoor GFRC Fire Table - 430 lbs.
Ships as Natural Gas. Liquid Propane (LP) conversion kits sold separately.
Natural Gas: 65,000 BTU's
Includes weather cover

WEATHER COVER

Durable Rhinoweave fabric. Breathable & water resistant. Spring clinch lock offers secure fit. Machine washable. 1 year warranty.



SANCTUARY 2



colors shown: MOCHA / SLATE

Ignition Systems: **AWS, TMSI or MT**
Dimensions: 38 3/4" Diameter x 18" H
Outdoor GFRC Fire Bowl - 222 lbs.
Ships as Natural Gas. Liquid Propane (LP) conversion kits sold separately.
Natural Gas: 65,000 BTU's
Includes weather cover

PROPANE TANK HOLDER

Holds one (1) 20 lb. tank. Easy to remove top. Weight: 159 lb. Dimensions: 20" W x 21 1/2" H



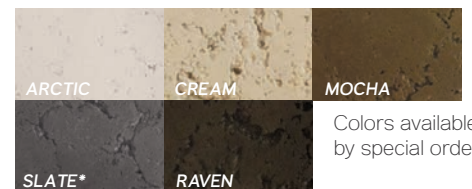
SANCTUARY 3



colors shown: ARCTIC / CREAM

Ignition Systems: **AWS, TMSI or MT**
Dimensions: 30" Diameter x 14 1/4" H
Outdoor GFRC Fire Bowl - 112 lbs.
Ships as Natural Gas. Liquid Propane (LP) conversion kits sold separately.
Natural Gas: 65,000 BTU's
Includes weather cover

COLORS



Colors available by special order

COLORS PRESENTED IN THIS CATALOG MAY NOT REPRESENT COLORS RECEIVED. We cannot guarantee that the color you see accurately portrays the true color of the product.

KALEA BAY



LED & NON-LED MODELS


FEATURES

LED Models: Full spectrum lighting - Requires 120VAC power

Non-LED Models: Battery-operated Ignition

Four Sizes 36" / 48" / 60" / 72", all 16" tall opening

Burner & firebox constructed of weather/corrosion resistant 304 stainless steel

 Ecoflow Electronic Ignition System features built in safety shutoff in case of loss of flame and auto-relight. You can choose between intermittent or continuous pilot modes

Control Center with each model housed in 304 Stainless Steel Cabinet

Built in RF (Radio Frequency) Receiver allowing you to add up to three (3) optional Skytech Remote Controls

See-Through Conversion Kits available

Ships as Natural Gas (NG). Field Convertible to Liquid Propane (LP), Conversion Kits sold separately

Tested & Approved to: ANSI Z21.97-2017/CSA 2.41-2017

Made in the USA

OPENING SIZES

- 36" x 16"
- 48" x 16"
- 60" x 16"
- 72" x 16"



CONTROL CENTER

LED MODELS



Controls: On / Off, Low / High, Continuous Pilot, Learn & LED On/Off.



Use the RGB dials to get your desired color, there are over 16 million to choose from!

NON-LED MODELS



Controls: On / Off, Low / High, Continuous Pilot, & Learn.



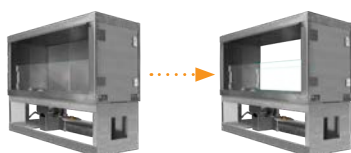
C Batteries (4)

Easy access to the battery tray makes maintenance for the Kalea Bay a breeze.

SEE THROUGH

The Kalea Bay ships as a single sided outdoor fireplace. We offer a Kalea Bay See Through Conversion Kit to convert your unit into a See Through Kalea Bay.

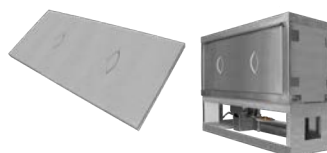
Kit includes all materials needed for conversion, plus a second windshield and rear fireplace hood.



WEATHER COVER

While the Kalea Bay is constructed of weather/corrosion resistant materials, sometimes the elements can be cruel. These opening covers are constructed of 304 stainless steel form fit and available for each size Kalea Bay Model.

Weather covers are offered as an accessory for all our Kalea Bay models.



ACCESSORIES

Controls

We offer many different controls ranging from On/Off remotes, switches and timers.

AF4000-HAT

Pool / Home automation system link (works with most manufacturers systems).

ADP10-OUT

Outdoor 7.5 VDC power adapter. Available in 10' length. Eliminated battery power.

Propane Conversion Kits

Convert your Kalea Bay from Natural Gas (NG) to Liquid Propane (LP).

Wire Harness Extension

10 foot module wire harness. Available for both LED & Non-LED versions.

BURNER SYSTEMS



AWS ALL WEATHER ELECTRONIC IGNITION SYSTEM

The AWS Fully Electronic Ignition System is known for its ability to keep the fire going in spite of harsh weather.



ROUND PAN
Sizes: 29 / 33



SQUARE PAN
Sizes: 20 / 26 / 32 / 38



ROUND FLAT
Sizes: 26 / 29 / 34 / 44



SQUARE FLAT
Sizes: 25 / 30 / 40

TFS THERMOCOUPLE FLAME SENSE

Thermocouple flame sense technology with direct spark ignition (non-piloted). Battery operated. Remote control included.



ROUND PAN
Sizes: 19 / 25 / 29



SQUARE PAN
Sizes: 20 / 26 / 32



ROUND FLAT
Sizes: 29



SQUARE FLAT
Sizes: 25

TMSI THERMOCOUPLE MANUAL SAFETY with SPARK IGNITION

Thermocouple manual safety technology, turns the gas valve OFF if flame goes out. Adjustable flame height. Battery operated manual spark ignition.



ROUND PAN
Sizes: 19 / 25 / 29 / 33



SQUARE PAN
Sizes: 20 / 26 / 32 / 38



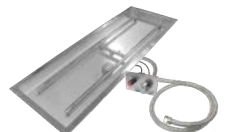
ROUND FLAT
Sizes: 26 / 29 / 34



SQUARE FLAT
Sizes: 25 / 30 / 34



T (Line of Fire)
Sizes: 30 / 36 / 48 / 60



H (Line of Fire)
Sizes: 30 / 36 / 48

MT MATCH THROW

Use a butane lighter or match to start the flame. Key valve with 12" key included. Fully adjustable flame height. Fully assembled & ready to install.



ROUND PAN
Sizes: 16 / 19 / 25 / 29 / 33



SQUARE PAN
Sizes: 20/26/32/38



ROUND FLAT
Sizes: 26 / 29 / 34



SQUARE FLAT
Sizes: 25 / 30 / 34 / 40 / 46

BURNER SYSTEMS

AWS A LA CARTE KITS DO NOT INCLUDE BURNER OR PAN



SINGLE FIRE FEATURE KIT: FG-AWS30VDC-RCK

Used for a single fire feature

Can only be installed in fire features that are greater than 10 feet away from a pool / spa.

KIT INCLUDES



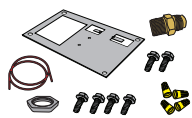
Model: FG-SCGNG-FS30VDC
Valve, 24" Pilot assembly, Heat shield & 30VDC wire leads.



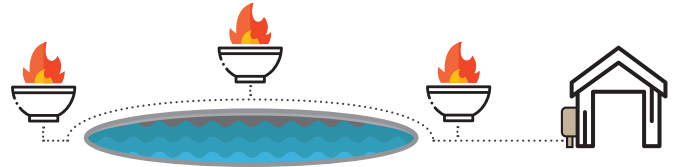
Model: FG-1420-AOD
Remote control, weather proof box & cover.



Model: GOE-30DCV
Power supply for single installs greater than 10 feet away from pool / spa.



Model: AWS-HARDWARE-BAG
Metal plate, (4) 10-24x1/2" screws, (1) Brass nut, (2) 8-18x1/2" screws, (4) wire nuts, (1) 1/2"NPT x 1/2" Flare, (1) Red ext wire.



MULTIPLE FIRE FEATURES & POOL / SPA KIT: FG-SCNG-FS30VDCK

Used when running 1 - 4 fire features. Also used when running a single or multiple fire feature(s) within 10 feet of a pool / spa.

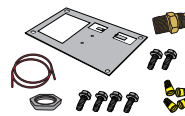
One (1) kit per fire feature. One Power Supply for every 4 fire features.

Example: If you have 3 fire features, you will need 1 Power Supply. If you have 6 fire features, you will need 2 Power Supplies.

KIT INCLUDES



Model: FG-SCGNG-FS30VDC
Valve, Pilot assembly, Heat shield & 30VDC wire leads. (1) required per fire feature.



Model: AWS-HARDWARE-BAG
Metal plate, (4) 10-24x1/2" screws, (1) Brass nut, (2) 8-18x1/2" screws, (4) wire nuts, (1) 1/2"NPT x 1/2" Flare, (1) Red ext wire.

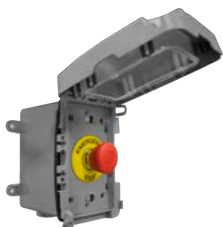
POWER SUPPLY SOLD SEPARATELY FROM KIT



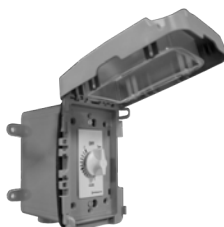
Model: FG-PS-30V320
Pool Certified low voltage power supply allowing you to place burner systems within 5 feet of a pool or spa. Power supply must be installed at least 10 feet away from any water source. (1) required for every (4) fire features.

AWS A LA CARTE ACCESSORIES

ALL ACCESSORIES WORK WITH BOTH SINGLE FIRE FEATURE KITS & MULTIPLE FIRE FEATURE KITS



Model: FG-EMER-STOP
Electrical Emergency Stop for 120VAC or 30VDC Appliances, housed in Weatherproof J-Box and Weatherproof Cover



Model: FG-TIMER-2HR
120VAC Two (2) Hour Mechanical Timer, housed in Weatherproof J-Box and Weatherproof Cover



Model: FG-WS-OD
120VAC Wired Wall Switch housed in Weatherproof J-Box and Weatherproof Cover

BURNER KITS & ENCLOSURES



BURNER KITS

..... BURNING SPUR KITS FIRE RING KITS H BURNER KITS



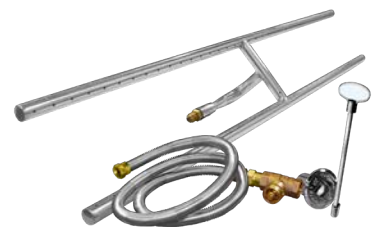
Kit Includes: Burning Spur, Orifice, 1/2" OD x 46" Tranquiline Gas Flex Line, Key Valve, Polished Chrome Cover & 12" Key.

Consumer warranty of 5 years. Commercial warranty of 1 year. Made in the USA.



Each Fire Ring Kit includes: Fire Ring, Orifice, 1/2" OD x 46" Traquiline Gas Flex Line, Key Valve, Polished Chrome Cover and 12" Key.

Consumer warranty of 5 years. Commercial warranty of 1 year.



Each H Burner Kit includes: H Burner, Orifice, 1/2" OD x 46" Traquiline Gas Flex Line, Key Valve, Polished Chrome Cover and 12" Key.

Consumer warranty of 5 years. Commercial warranty of 1 year.

MODEL	BTU NG	BTU LP
DBS-12K	42,000	33,000
DBS-16K	60,000	55,000
DBS-22K	100,000	99,000
DBS-31K	160,000	150,000
DBS-36K	183,000	182,000

MODEL	BTU NG	BTU LP
FG-FR-6SSK	42,000	33,000
FG-FR-12SSK	42,000	33,000
FG-FR-18SSK	60,000	55,000
FG-FR-24SSK	100,000	99,000
FG-FR-30SSK	up to 300,000	300,000
FG-FR-36SSK	up to 300,000	300,000
FG-FR-48SSK	up to 300,000	300,000

MODEL	BTU NG	BTU LP
FG-H-24SSK	90,000	88,000
FG-H-30SSK	120,000	117,000
FG-H-36SSK	150,000	150,000
FG-H-48SSK	170,000	168,500

GAS FIRE PIT KITS

FIREGEAR BUILD PROGRAM

Get a customized sales sheet for each of your models that will accept a Firegear SRW / Architectural block product, converting a wood burning fire pit to a gas fire pit.

This build program gives you a detailed extruded view of what goes into converting your wood burning fire pit to a gas fire pit, as well as providing many different accessories to fit your projects unique needs.



GET STARTED NOW!

Visit firegearbuildprogram.com or scan the QR code to the left with your smartphone to fill out the form and get the process started!



PACKAGES

Round Packages: Fits openings 16" & larger. Offered in a pan or flat style.

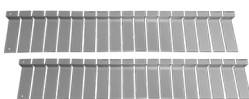
Square Packages: Fits openings 20" & larger. Offered in flat style.

Linear Packages: Fits openings 28 1/4" & larger. Offered in a pan or flat style.



BURNER SYSTEM
various pan / flat styles available

+



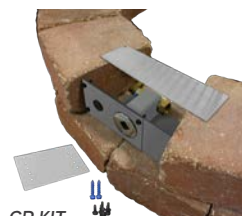
FLEXFRAME

+



VENT KIT

+



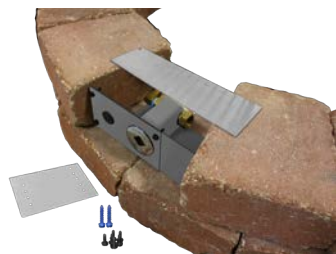
CP KIT
various ignition systems available

+



MEDIA

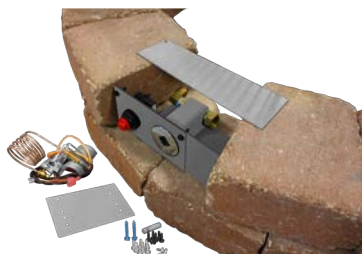
SRW KITS



PAVER-CP-MT

For use when building fire pit enclosures with segmented retaining wall block and Match Throw 'MT' Burner Systems

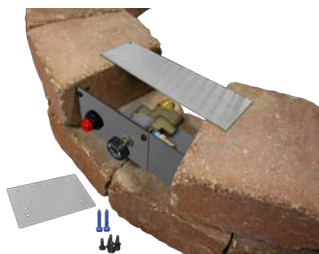
Valve not included



PAVER-CP-MT-MSI

For use when building fire pit enclosures with segmented retaining wall block and Match Throw 'MT' Burner Systems. Includes a manual spark ignition.

Valve not included



PAVER-CP-TMSI

For use when building fire pit enclosures with segmented retaining wall block and 'TMSI' Burner Systems

Valve + Faceplate not included



ESTOP-CP-KIT

For use when building fire pit enclosures with segmented retaining wall block and Firegear's E-Stop

E-Stop not included

FLEXFRAME

Allows you the flexibility to fill the gap between the fire pit structure and the pan

Allows you to easily remove the burner without disturbing the structure

Flexible and easy to adapt for round, square and rectangular fire pits

Flexframe-SS (two 44" pieces)

Flexframe-SS3 (three 44" pieces)

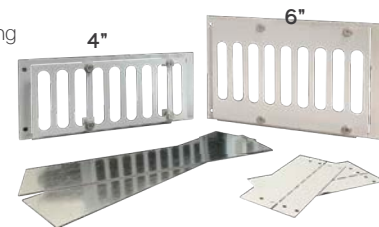


VENT KITS

Stainless steel segmented retaining wall vent kit with lintel.

Includes two vents to provide 18 square inches of ventilation.

Available in 4" and 6" heights



E-STOP & ACCESSORIES

E-STOP



COMPLETELY MECHANICAL NO POWER REQUIRED!

- Unique all mechanical gas shut-off timer with built-in emergency stop - no power required
- High Btu capacity
- Safest gas timer available in the industry
- Available in 2.5 and 1 hour models
- Innovative multi-port design provides installation flexibility
- 1/2" NPT inlets and outlets (side and back)
- Six (6) mounting holes (front and side) for secure installation
- Natural gas (NG) or Liquid Propane (LP) - no conversion necessary



ESTOP1-0H



ESTOP2-5H

E-STOP ENCLOSURES *E-STOP SOLD SEPARATELY



ESTOP-LC-KIT

Locking cabinet, constructed of 304 stainless steel
Removable lock



ESTOP-RM-KIT

Surface mount for the E-Stop
Constructed of 304 stainless steel



ESTOP-CP-KIT

Designed for use with architectural block / pavers
Expands from 8" to 12" wide to accommodate various block sizes

MEDIA

Choose from lava rocks, lava stones or lava boulders.
Various sizes available



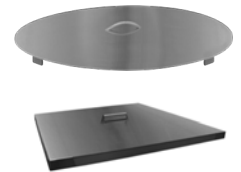
GLASS

Choose from our broken and large reflective decorative fire glass.
Bulk packaging available for purchase



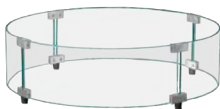
LIDS

Lids are available for most sizes
Choose from round, square and linear.



WINDSHIELDS

Tempered glass windshields offered in various sizes in round, square and linear.



CONTROLS

Wireless or wired remote controls for specific Firegear Outdoors products.



VENT KIT

Two (2) Stainless Steel 6" H x 12" W vents with mounting screws.
Each vent provides 18 square inches of ventilation.

