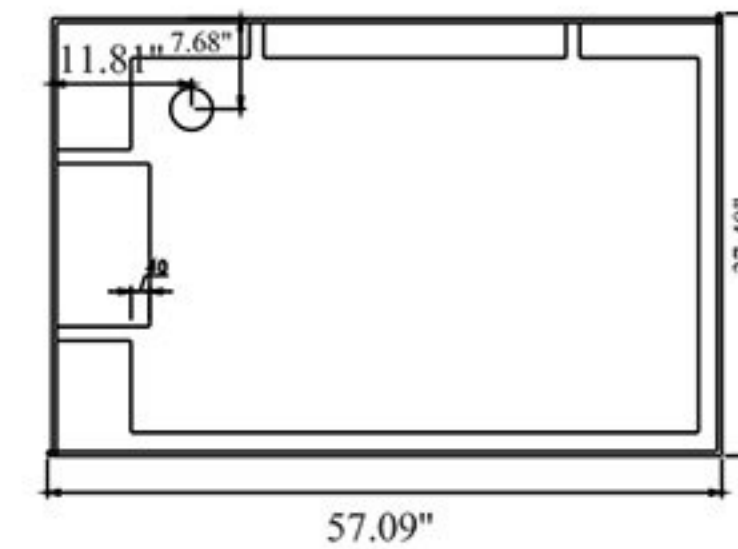
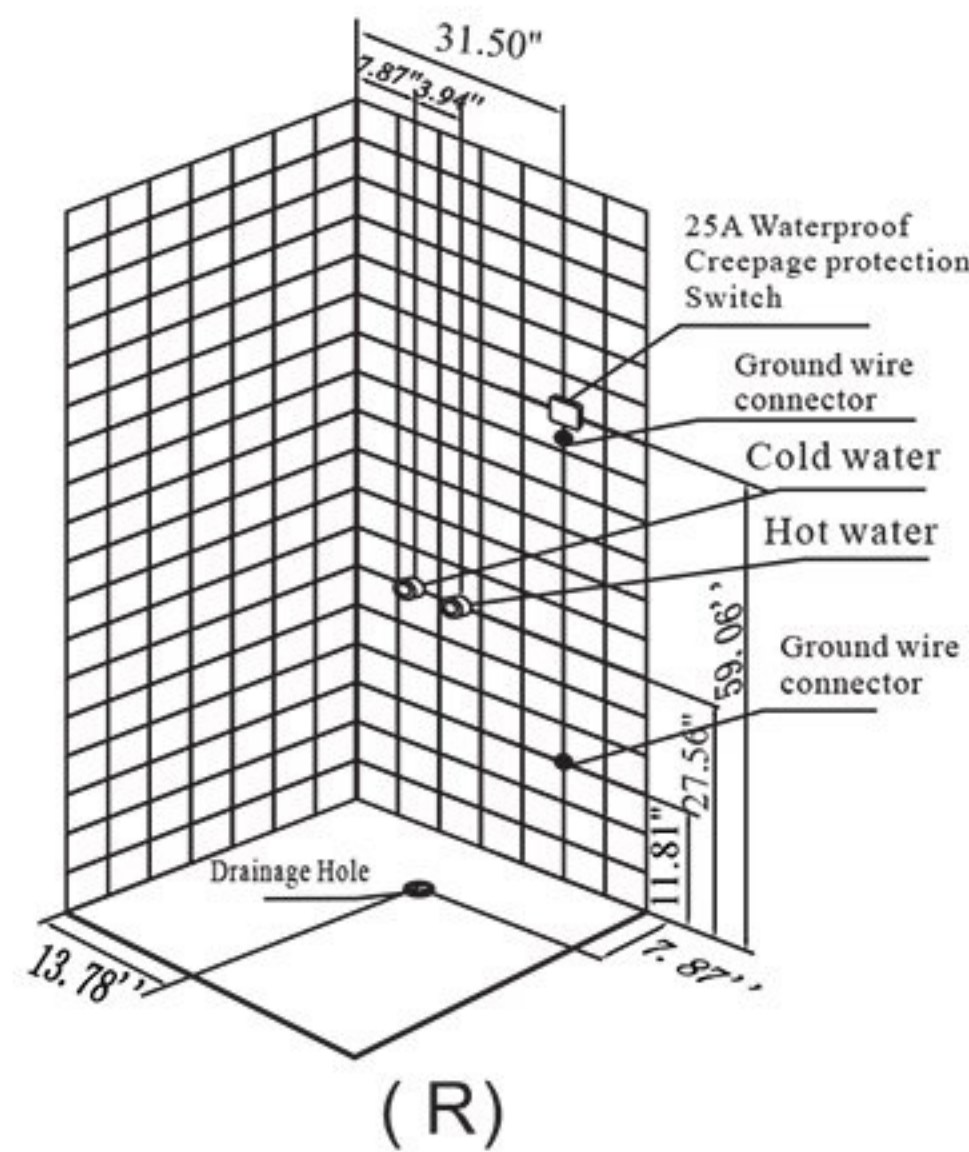
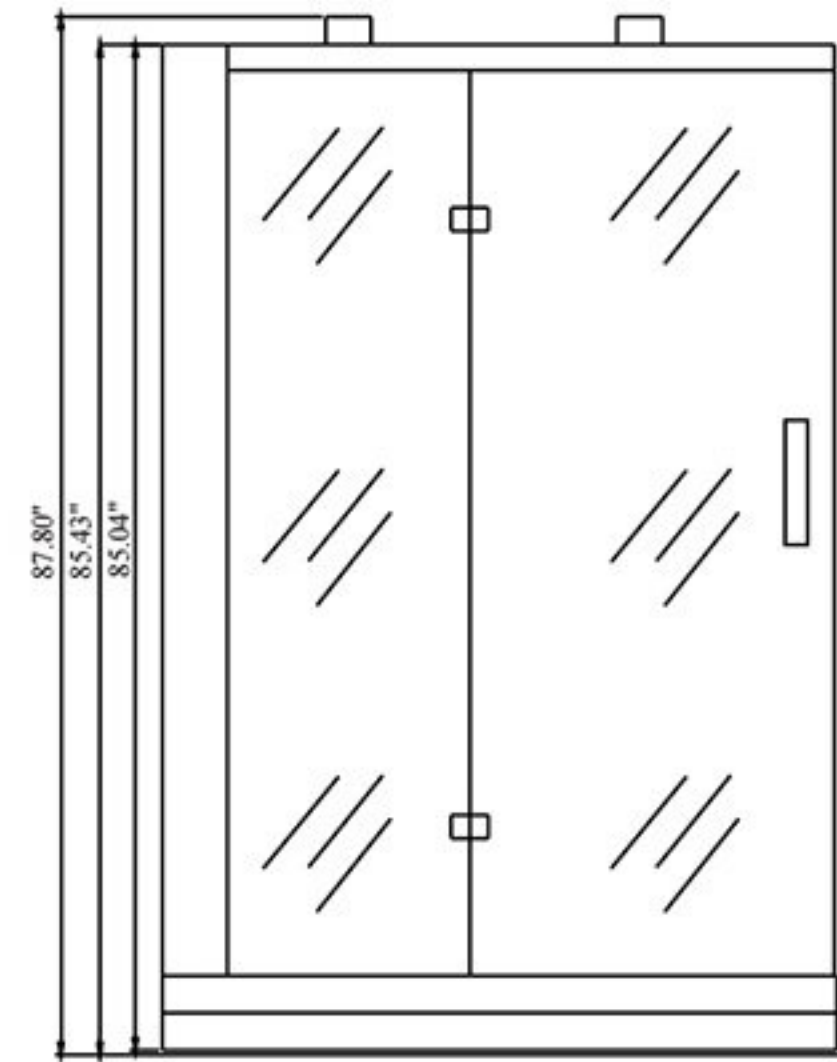
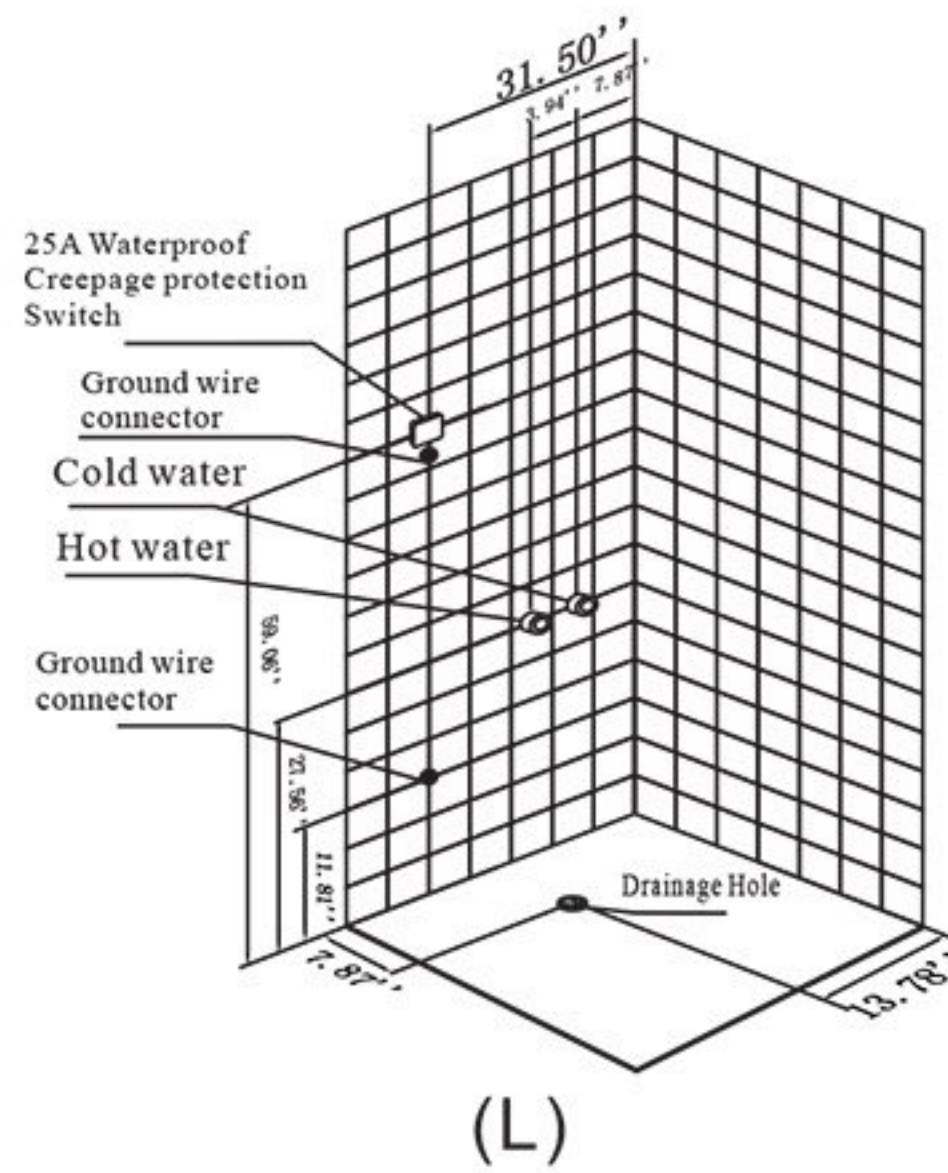


SIZE: 57.09X37.40X87.80inch



Three-dimensional Installation Dimension Drawing

Plane Dimension Drawing

Total Electrical Requirements

-5KW Steamer Generator:220V Dedicated 32A GFCI Breaker

Plumbing Specifications

-1/2"Flexible Hot and Cold Water Lines

-1 1/2"Flexible Hose Drain

1. Water Supply: One Cold and one Hot pipe. Shut-off Valve with outside Yoke (DN15(G1/2)) shall be mounted on the wall which should be 700mm above from the ground. $0.15\text{mPa} = \text{Pressure} = 0.4\text{mPa}$.

2. The steamer power: 5000W. Power supply voltage: AC230V \pm 10%. Frequency:60Hz. Single Phase and Three Wire System with 3X5mm² rubber-insulated copper wire which is independent loop. The steamer is mounted with the Creepage Overload Protection device and must have the reliable ground wire.

3. Water Drainage: The floor drainage hole should be the same or bigger than DN50, and should be on a line with the ground.