



2022-2033

# BOND

## • FOUNTAINS •

DOMESTIC CATALOG



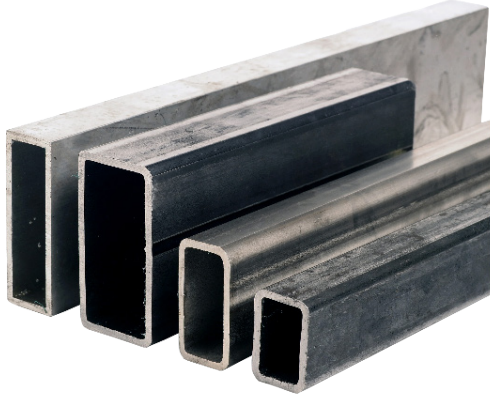


# FOUNTAINS





# • MATERIALS •



## STEEL

Steel is an alloy of iron with typically a few tenths of a percent of carbon to improve its strength and fracture resistance compared to iron.



## FIBERGLASS

Fiberglass is a common type of fiber-reinforced plastic using glass fiber. The fibers may be randomly arranged, and flattened into a sheet.



## ENVIROSTONE®

An Envirostone® finish is made with durable inorganic materials that can emulate virtually any natural surface, at a fraction of the cost and weight of natural materials.

FIRE-PROOF AND HEAT RESISTANT  
PROCOAT® UV PROTECTION  
LIGHT WEIGHT



## POLYRESIN

One of the forms of resin materials that are especially flexible when heated. This quality makes it the ideal material to use in any instance where molds are used to create goods. It dries to a durable material that is virtually unbreakable



powered by  
**JEBAO® WATER PUMPS**

Jebao Co. Ltd is a leading manufacturer in the professional water garden market, developing and manufacturing pond accessories, fountain pumps, lights and aquarium accessories.

### **MEETS FOUNTAIN WORKLOAD**

Each pump is selected for its corresponding fountain to ensure it satisfies the volume and pressure requirements of the waterflow. Inaccurate pump pairings can cause strain, leading to premature pump failure. With Jabao's experienced accuracy in workload pairings, this is no longer an issue.

### **INCREDIBLE QUALITY**

Precision machining and quality parts help to manufacture our water fountain pumps to meet the highest of quality standards.

### **QUALITY CONTROL**

Strict Quality Control protocols ensure consistent production, resulting in the manufacturing result of a superior pump product.

### **AUTO SAFETY SHUT OFF**

The auto-safety shut off includes a heat sensor that will prevent damage to the pump if the water reservoir runs dry.



Since its establishment in 1998, Jebao is proudly manufacturing high quality and innovative products. With their focus on quality control, Jebao has obtained GS, UL, CUL, BS, SAA and many other international certifications.





# MALIBU TIERS FOUNTAIN

This Malibu Tiers Fountain created with a modern stacked stone look is designed to achieve a visual balance between architecture and nature. The flowing water pours down into three stepped pools, to its resolution at the base of the water element. Focus on the sound of the water, and let it remind you of some gentle cascading waterfalls in Hawaii, or the image of the rain pouring down through the natural spouts found in Alpine mountain rocks, carved from decades of snow melt pathways. Made of Envirostone®, with a ProCoat® sealant to protect from light scratches and UV damage. The added result of finding a shady nook in your garden, or on your patio, is that the three levels of lights will be best showcased, even during daytime garden strolls.



Item# Y95863      UPC 034613958632      Master Case UPC 20034613958636

### FEATURES

Created from our custom Envirostone® material, resulting in this intriguing textured surface.  
Our ProCoat® sealant guards against UV and mild scratch damage.  
For protection against frost, snow and pooling water, we recommend storage inside during the harshest winter weather.  
Includes UL listed electronic pump and three tiers with white LED lights.

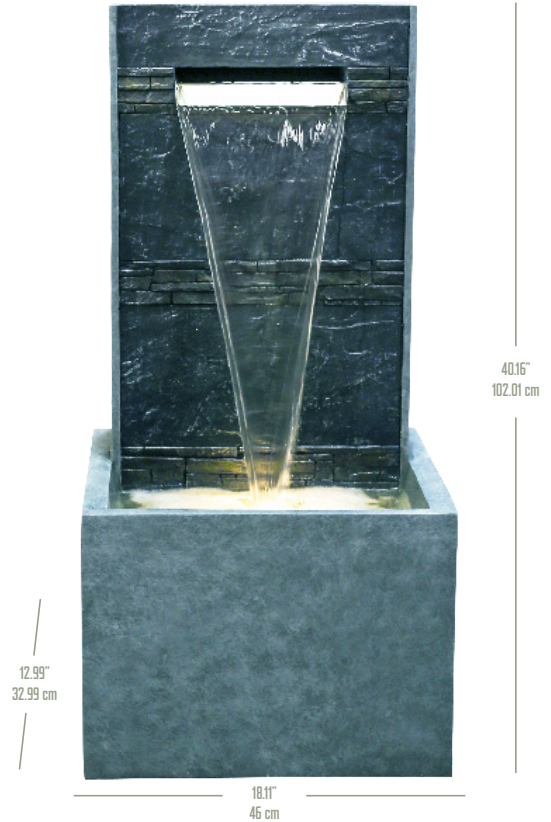
### MATERIALS

POLYRESIN 90%  
FIBERGLASS 10%

PACKAGING	BROWN BOX
ARTWORK	GREYSSCALE
WARRANTY	1 Year

### DIMENSIONS

ITEM WEIGHT	28.6	CASE WEIGHT	33
ITEM LENGTH	15.75"	CASE LENGTH	35.24"
ITEM WIDTH	14.57"	CASE WIDTH	17.72"
ITEM HEIGHT	32.28"	CASE HEIGHT	19.09"



# FERNWOOD WATERFALL FOUNTAIN

Surround this waterfall with Variegated Ivy or nestle it in a bank of Maidenhair Ferns to accentuate the contrast of the delicate plant life, with the simple lean lines of this textural Fernwood Waterfall Fountain. Reproducing the look of a rough slate wall, with a strong flowing spout, this fountain creates the diversion of a calming water feature in your yard. The added result of creating a shady nook with your potted orchid collection, or in a corner of your covered porch, will be that the lit basin will be appreciated, even during daytime pauses enjoying your garden oasis.



Item# Y95865      UPC 034613958656      Master Case UPC 20034613958650

### FEATURES

Created from our custom Envirostone® material, resulting in very textural fountain form.  
 Our ProCoat® sealant guards against UV and mild scratch damage.  
 For protection from frost, snow and heavy rains or pooling water, we recommend storage inside during the harshest winter weather.  
 Includes UL listed electronic pump and a basin with three warm white LED lights.

### MATERIALS

POLYRESIN 90%  
 FIBERGLASS 10%

PACKAGING	BROWN BOX
ARTWORK	GREYSCALE
WARRANTY	1 Year

### DIMENSIONS

ITEM WEIGHT	26.4	CASE WEIGHT	31.9
ITEM LENGTH	18.11"	CASE LENGTH	43.11"
ITEM WIDTH	12.99"	CASE WIDTH	15.94"
ITEM HEIGHT	40.16"	CASE HEIGHT	21.46"





## TIBURON FOUNTAIN

Like the inlets and beautiful views of Tiburon, this distinctive elegant fountain represents an exclusive presentation of a clean-lined designed fountain. Just imagine hearing the resonating splashes as the water pours into its receiving well. Some things are never constant in life, but this fountain and its comforting sound, can be. Wouldn't this be a lovely welcome just outside the front door on your covered slate-tiled entry porch? Picture it near the trailing Bougainvillea, standing out among the natural plant décor. This steel fountain is 42.52" high and can really garner the attention it needs without any adornment. A modern statement of strength and calm.



Item# Y95868      UPC 034613958687      Master Case UPC 20034613958681

### FEATURES

Designed with 100% Galvanized sheet steel materials with a protective coating, this fountain would be an elegant water element at home in your garden, or at the entrance to a modern art museum.

Includes UL listed Electronic Pump.

### MATERIALS

100% Steel (Galvanized Sheet)

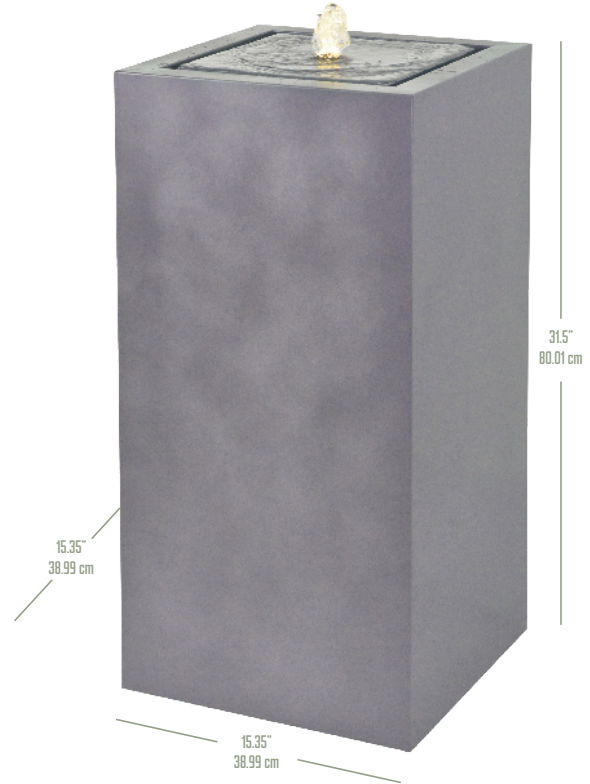
PACKAGING BROWN BOX

ARTWORK GREYSCALE

WARRANTY 1 Year

### DIMENSIONS

ITEM WEIGHT	70.4	CASE WEIGHT	74.8
ITEM LENGTH	28	CASE LENGTH	31.15
ITEM WIDTH	28	CASE WIDTH	31.15
ITEM HEIGHT	12	CASE HEIGHT	15.4



# MESA SPRINGS FOUNTAIN

Elegant and understated, this classic Mesa Springs Fountain is topped with a soothing bubbling spring. It will stand out in any corner of your garden, or steal center stage in the middle of the gazebo conversation group. This pillar fountain will add the element of height to the landscape design of your patio or garden. Enjoy the light trickle of bubbling spring sounds while reading nearby, or let it be your focus during outdoor yoga or creative thinking time. Listen to it, and let it help you slow the pace of your day and allow your brain wander into imaginative problem-solving. Use the Mesa Springs Fountain as your beautiful means to unwind and heal the stress right out of your day.



Item# Y95869      UPC 034613958694      Master Case UPC 20034613958698

### FEATURES

Designed with 100% Galvanized sheet steel materials with a protective coating, this fountain would be an elegant water element at home in your garden, or at the entrance to a modern art museum. Includes UL listed Electronic Pump.

### MATERIALS

100% Steel (Galvanized Sheet)

PACKAGING	BROWN BOX
ARTWORK	GREYSCALE
WARRANTY	1 Year

### DIMENSIONS

ITEM WEIGHT	15.4	CASE WEIGHT	18.7
ITEM LENGTH	15.35"	CASE LENGTH	18.5"
ITEM WIDTH	15.35"	CASE WIDTH	18.5"
ITEM HEIGHT	31.50"	CASE HEIGHT	35.43"





# GAINSVILLE

Add an enchanting touch to your outdoor area with the beautiful and lighted Gainesville Fountain. Its Envirostone® construction gives the look and feel of real stone, without the backbreaking heavy weight. This whimsical centerpiece has been hand painted by our professional artisans, ensuring a truly unique fountain for your outdoor living area. When you need a break from the day, step into your own backyard and unwind to the sounds of water cascading throughout the Gainesville Fountain.



Item#	UPC	Master Case UPC
Y94169	034613941696	20034613941690

### FEATURES

Created from our custom Envirostone® material, resulting in very textural stone effect on this lovely fountain.  
 Our ProCoat® sealant guards against UV and mild scratch damage. For longevity, protection against frost, snow and heavy rain pooling at the base is important to prevent Envirostone® damage from prolonged exposure. We recommend storage inside during the harshest winter weather.  
 Includes UL listed electronic pump and six white LED lights to showcase the waterspout.

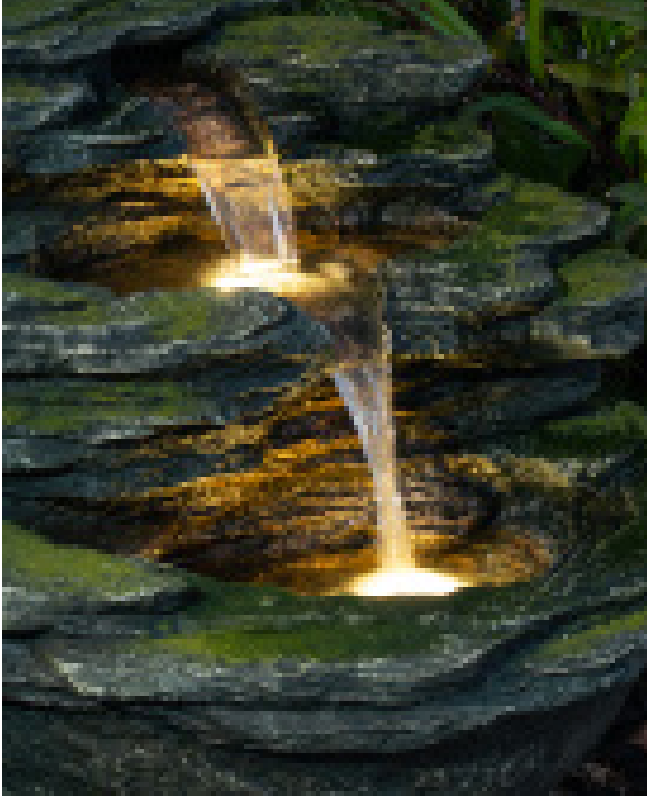
### MATERIALS

POLYRESIN 90%  
 FIBERGLASS 10%

PACKAGING	BROWN BOX
ARTWORK	GREYSCALE
WARRANTY	1 Year

### DIMENSIONS

ITEM WEIGHT	44	CASE WEIGHT	50.6
ITEM LENGTH	31"	CASE LENGTH	34.84"
ITEM WIDTH	22.83"	CASE WIDTH	21.46"
ITEM HEIGHT	18.90"	CASE HEIGHT	25.59"



# CALISTOGA SPRINGS FOUNTAIN

Calistoga, California provides a haven for naturalists to enjoy hot springs, healing mud baths and artisan gourmet food and beverages. Listening to this fountain brings the relaxing feel of submerging in a natural found hot springs. Inspired by California slate, these stones are fabricated from our custom Envirostone® material coated with a ProCoat® to guard against UV damage and light scratches. The added result of finding a shady nook in your Azealia shrubs, or on your covered portico, will be that the levels of lights in this water feature will be best showcased, even during daytime flower gathering.



Item# Y95864      UPC 034613958649      Master Case UPC 20034613958643

### FEATURES

Created from our custom Envirostone® material, resulting in very realistic rock texture on this natural looking fountain. For protection from frost, snow and heavy rains or pooling water, we recommend storage inside during the harshest winter weather. Includes UL listed electronic pump and three white LED lights in two tiers.

### MATERIALS

POLYRESIN 90%  
FIBERGLASS 10%

PACKAGING	BROWN BOX
ARTWORK	GREYSCALE
WARRANTY	1 Year

### DIMENSIONS

ITEM WEIGHT	25.3	CASE WEIGHT	30.8
ITEM LENGTH	21.65"	CASE LENGTH	25"
ITEM WIDTH	18.9"	CASE WIDTH	23.03"
ITEM HEIGHT	17.72"	CASE HEIGHT	21.06"





# ARTESIAN FOUNTAIN

The Artesian term may represent the natural forcing of water to the surface, but this Artesian Fountain allows the descending cascade of water, while creating a peaceful sound to enjoy. The natural look of the layered stone is created in our unique Envirostone® material and coated with a ProCoat® sealant to prevent UV fading and mild scratching. This fountain can easily be added to the patio, or just outside the backdoor. Just surround it with some African violets and ferns, and it will look like it has been there forever. Or place it near the corner of a Japanese Maple tree and let the beauty and the sound create your own garden oasis.



Item# Y95867      UPC 034613958670      Master Case UPC 20034613958674

### FEATURES

Created from our custom Envirostone® material, the result is a textured form with the appearance of a mossy finish on this natural looking fountain. Our ProCoat® sealant guards against UV and mild scratch damage. For protection from frost, snow and heavy rains or pooling water, we recommend inside storage during the harshest winter weather. Includes UL listed electronic pump and four tiers with white LED lights.

### MATERIALS

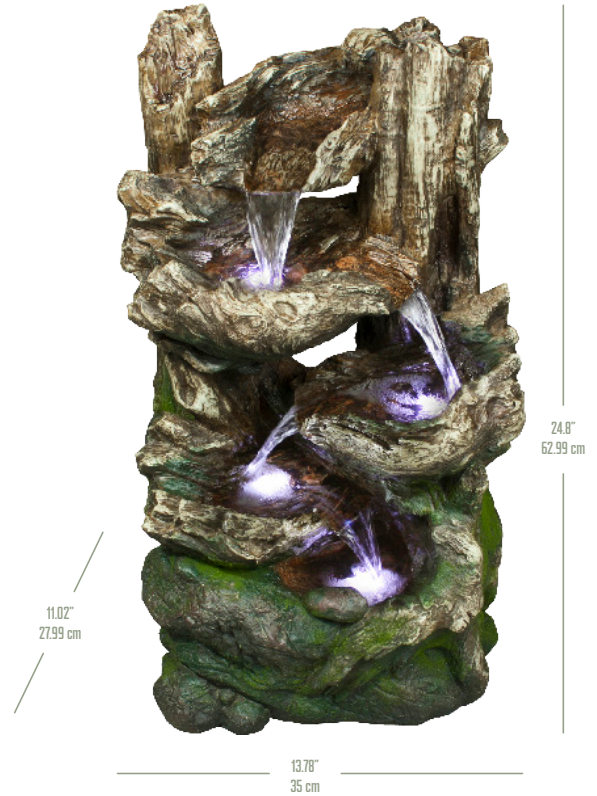
POLYRESIN 90%  
FIBERGLASS 10%

PACKAGING	BROWN BOX
ARTWORK	GREYSCALE
WARRANTY	1 Year

### DIMENSIONS

ITEM WEIGHT	35.2	CASE WEIGHT	42.9
ITEM LENGTH	24.02"	CASE LENGTH	43.31"
ITEM WIDTH	16.14"	CASE WIDTH	19.09"
ITEM HEIGHT	40"	CASE HEIGHT	27.36"





# KERSEY CREEK FOUNTAIN

With the rustic appearance of a naturally aged wooden waterfall cascading down towards a faux stone foundation, the Kersey Creek Fountain has been a favorite of customers from across the country. Crafted from our custom Envirostone® material and sealed with ProCoat® to protect from UV damage and light scratches, this fountain has an almost driftwood look about it, to remind you of walks along the beach and finding treasures along the shoreline. Enjoy the light cascading sounds as you read in an Adirondack chair on your patio or enjoy a favorite beverage while lounging on the balcony.



Item# Y96598A      UPC 034613965982      Master Case UPC 20034613965986

### FEATURES

Created from our custom Envirostone® material, resulting in this artistic variety of textures. Our ProCoat® sealant guards against UV and mild scratch damage. For protection from frost, snow and heavy rains or pooling water, we recommend storage inside during the harshest winter weather. Includes UL listed electronic pump and four tiers with white LED lights.

### MATERIALS

POLYRESIN 90%  
FIBERGLASS 10%

PACKAGING	BROWN BOX
ARTWORK	GREYSCALE
WARRANTY	1 Year

### DIMENSIONS

ITEM WEIGHT	15.4	CASE WEIGHT	19.8
ITEM LENGTH	13.78"	CASE LENGTH	27.36"
ITEM WIDTH	11.02"	CASE WIDTH	13.98"
ITEM HEIGHT	24.80"	CASE HEIGHT	16.93"



# CAPISTRANO

With the enduring look of an old-world water spigot, this Capistrano fountain was inspired by a small California town bordered by two rivers, famous for the annual Spring return of Cliff Swallows. Steeped in history and adorned with scrollwork crafted in our custom Envirostone® material, this fountain is reminiscent of its 18th century Spanish mission namesake. Revel in sounds formed by the robust water cascade created by its large water basin, and just feel your self-unwinding and relaxing in its company.



Item# Y95301      UPC 034613953019      Master Case UPC 20034613953013

### FEATURES

Created from our custom Envirostone® material, the result is the look of a stone carved texture. Our ProCoat® sealant guards against UV and mild scratch damage. This fountain will need your protection against frost and heavy rain pooling at the base, or snow. For best longevity, we recommend storage inside during the harshest winter weather. Includes UL listed electronic pump.

### MATERIALS

POLYRESIN 90%  
FIBERGLASS 10%

PACKAGING	BROWN BOX
ARTWORK	GREYSCALE
WARRANTY	1 Year

### DIMENSIONS

ITEM WEIGHT	29.7	CASE WEIGHT	43.34
ITEM LENGTH	22.24"	CASE LENGTH	47.83"
ITEM WIDTH	12.99"	CASE WIDTH	16.34"
ITEM HEIGHT	45.67"	CASE HEIGHT	25.59"





# GRAND ARIA

Add peace and tranquility to your outdoor space with the charming Grand Aria Fountain. The soothing sound of water cascading from rustic pots offers a relaxation unlike any other. Its Envirostone® construction gives this fountain the look and feel of real stone, without the heavy weight, making it easy to move around as needed. This classical centerpiece has been hand painted by artisans, ensuring a truly unique fountain for your outdoor living area for years to come. It is sure to add enjoyment with its gentle water sounds, creating your own calming sanctuary.



Item# Y95337A      UPC 034613953378      Master Case UPC 20034613953372

### FEATURES

Created from our custom Envirostone® material, the result is the look of a ceramic-like texture.  
 Our ProCoat® sealant guards against UV and mild scratch damage. We recommend that outdoor fountains be placed in a shady area out of direct sunlight, to retard algae growth.  
 Includes UL listed electronic pump and one LED light.

### MATERIALS

POLYRESIN 60%  
 CALCIUM CARBONATE 30%  
 FIBERGLASS 10%

PACKAGING	BROWN BOX
ARTWORK	GREYSCALE
WARRANTY	1 Year

### DIMENSIONS

ITEM WEIGHT	23.17	CASE WEIGHT	27.57
ITEM LENGTH	16.9"	CASE LENGTH	19.88"
ITEM WIDTH	15.4"	CASE WIDTH	18.1"
ITEM HEIGHT	28.35"	CASE HEIGHT	31.69"





# BELVEDERE FOUNTAIN

The gentle bubbling of water shimmers down the sides of this burnished-golden urn. Inspired by water carrying vessels of centuries gone, the pleasing form is timeless, and suits any décor. Just nestle it by your favorite bushes in the garden, or outside the back door on the patio, and it will bring welcome peace and inspire relaxation as its gentle sounds calm the soul. The Belvedere fountain adds a new kind of visual and audible interest to a corner of tiered potted plants, the empty niche by the hydrangeas, or your favorite reading spot in the backyard. It will soon look at home wherever you place it, and invite you to spend more time unwinding in the yard, while letting your imagination flow.



Item#	UPC	Master Case UPC
Y95862	034613958625	20034613958629

### FEATURES

- Shaped from custom Envirostone®, the graceful result showcases its hand painted surface.
- Our ProCoat® sealant guards against UV and mild scratch damage. Garden fountains do well in a shady area out of direct sunlight, to retard algae growth.
- Protect this treasure against frost, snow, and heavy rain pooling at its base. For longevity, we recommend storage inside during the harshest winter weather.
- Includes UL listed electronic pump.

### MATERIALS

POLYRESIN 90%  
FIBERGLASS 10%

PACKAGING	BROWN BOX
ARTWORK	GREYSCALE
WARRANTY	1 Year

### DIMENSIONS IN INCHES

ITEM WEIGHT	50.6	CASE WEIGHT	55
ITEM LENGTH	24.8"	CASE LENGTH	45.87"
ITEM WIDTH	21.26"	CASE WIDTH	24.61"
ITEM HEIGHT	40.16"	CASE HEIGHT	25"



# BRIELLE

This timeless fountain is enriched with the stylized tracings of flowering tulips. Inspiration gifted by nature, the design on this vessel only serves to enhance your enjoyment of the calming flow of the water over its pleasing artistry. In the late afternoon, the lower bowl is softly lit, to better enjoy the descending water into the receiving basin. Nestle this fountain into a quiet sitting area outside, to read and reflect with its calming little splashes as your joyful companion. Listen to the water trickling, and enjoy the water's calming affects that are at work on your mind, body, and soul.



Item# Y96591      UPC 034613965913      Master Case UPC 20034613965917

### FEATURES

Inspired by a Grecian urn and created from our custom Envirostone® material, the result is the look of an antiquity with its naturally aged texture. Our ProCoat® sealant guards against UV and mild scratch damage. This fountain will need your protection against frost and heavy rain pooling at the base, or snow. For best longevity, we recommend storage inside during the harshest winter weather. Includes UL listed electronic pump and one LED light.

### MATERIALS

POLYRESIN 60%  
CALCIUM CARBONATE 30%  
FIBERGLASS 10%

PACKAGING	BROWN BOX
ARTWORK	GREYSCALE
WARRANTY	1 Year

### DIMENSIONS

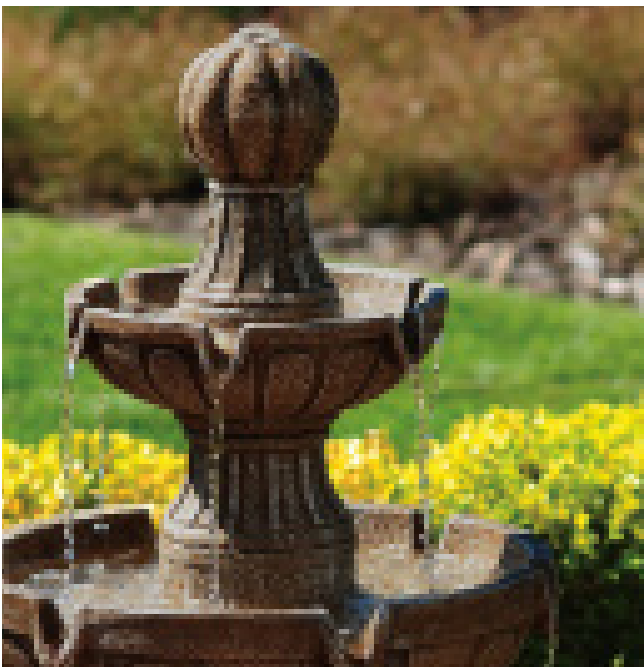
ITEM WEIGHT	19.8	CASE WEIGHT	28.6
ITEM LENGTH	19.88"	CASE LENGTH	25.39"
ITEM WIDTH	19.88"	CASE WIDTH	23.03"
ITEM HEIGHT	28.74"	CASE HEIGHT	27.56"





# NAPA VALLEY

The Napa Valley Water Fountain is an elegant centerpiece that will have your guests in awe. With three ornately designed tiers, water flows down to its reservoir, creating a peaceful atmosphere for your enjoyment. Evocative of a Napa Valley estate, and created from our custom Envirostone® material, the result is the look of an antiquity with the convenience of a lighter weight fountain. It is finished with a protective ProCoat® sealant, making it UV, temperature and mildly scratch resistant.



Item# Y97016      UPC 035355970166      Master Case UPC 20035355970160

### FEATURES

We recommend that outdoor fountains be placed in a shady area out of direct sunlight, to retard algae growth. Please protect this Envirostone fountain against frost, snow and heavy rain pooling at the base. For longevity, we recommend storage inside during the harshest winter weather. Includes UL listed electronic pump.

### MATERIALS

POLYRESIN 60%  
CALCIUM CARBONATE 30%  
FIBERGLASS 10%

PACKAGING	BROWN BOX
ARTWORK	GREYSCALE
WARRANTY	1 Year

### DIMENSIONS

ITEM WEIGHT	43.5	CASE WEIGHT	49.5
ITEM LENGTH	25"	CASE LENGTH	27.17"
ITEM WIDTH	25"	CASE WIDTH	18.9"
ITEM HEIGHT	45"	CASE HEIGHT	28.35"





# TORRIE BIRDBATH

Welcome winged wildlife into your garden with this stunning antique design. Its simple beauty is enhanced by the lovely ornamentation on both rim and pedestal. The Torrie Birdbath is a classic design that has become a proven favorite for both bird lovers and wildlife observers alike. One of the benefits of this lighter weight Envirostone® birdbath, is that it may be moved easily around the yard or stored inside during harsh winter weather.



Item# Y97030      UPC 034613970306      Master Case UPC 20034613970300

### FEATURES

If you prefer to set it in a more permanent location, or to deter larger wildlife, it has a hollow column to accommodate an interior anchoring pole.

Created from our custom Envirostone® material, with ProCoat® sealant to guard against UV and mild scratch damage.

Please protect this bird bath against frost, snow and heavy rain pooling at the base. For longevity, we recommend storage inside during the harshest winter weather.

### MATERIALS

60% POLYRESIN  
10% FIBERGLASS  
30% CALCIUM CARBONATE

PACKAGING	BROWN BOX
ARTWORK	GREYSCALE
WARRANTY	1 Year

### DIMENSIONS

ITEM WEIGHT	16.5	CASE WEIGHT	26
ITEM LENGTH	23.75"	CASE LENGTH	27"
ITEM WIDTH	23.75"	CASE WIDTH	23"
ITEM HEIGHT	29"	CASE HEIGHT	27"



# VETOZZA CASCADING FOUNTAIN

The unique, inspired structure of the Vetozza Cascading Fountain makes it a captivating addition to any garden or patio. Finished with a brown, earthy color, its main component is a slender, curved pillar. A series of clay-like bowls twist around the pillar from top to bottom, and water circles around it, flowing from one bowl into the next.



Item# Y98392      UPC 034613983924      Master Case UPC 20034613983928

### FEATURES

A unique look created from our custom Envirostone® material, with ProCoat® sealant to guard against UV and mild scratch damage. We recommend that outdoor fountains be placed in a shady area to retard algae growth. Please protect this fountain against frost, snow, and heavy rain pooling at the base.

### MATERIALS

POLYRESIN 90%  
FIBERGLASS 10%

PACKAGING	BROWN BOX
ARTWORK	GREYSSCALE
WARRANTY	1 Year

### DIMENSIONS

ITEM WEIGHT	28.6	CASE WEIGHT	35.2
ITEM LENGTH	15.75"	CASE LENGTH	41.54"
ITEM WIDTH	14.76"	CASE WIDTH	17.52"
ITEM HEIGHT	42.91"	CASE HEIGHT	18.2"





# ASHBORO WATER FOUNTAIN

In this stunning fountain, contrasting elements find harmony. Linear angles and an asymmetrical structure are softened by the gentle flow of water and the muted tones of its weathered finish. A modern take on a ceramic like sculpture, ours is created from custom Envirostone®, and the result is the look of an antique with the convenience of a lighter fountain. This fountain looks at home near the entrance to your garden, on your veranda, or adding gentle lighting and a welcoming touch to your front door decor.



Item# Y98881      UPC 034613988813      Master Case UPC 20034613988817

### FEATURES

Our ProCoat® sealant guards against UV and mild scratch damage. We recommend that outdoor fountains be placed in a shady area to retard algae growth. Please protect this fountain against frost, snow, and heavy rain pooling at the base. For longevity, we recommend storage inside during the harshest winter weather. Includes UL listed electronic pump and three tiers with three yellow LED.

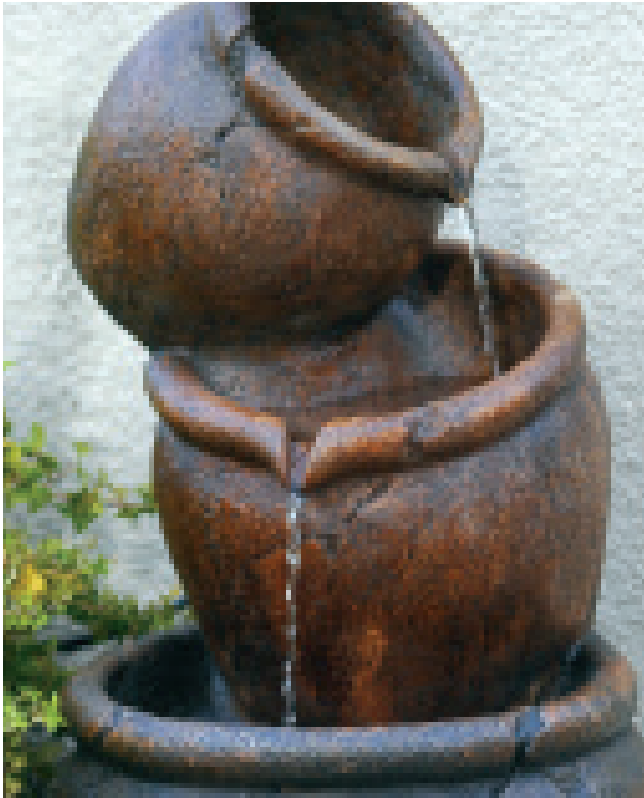
### MATERIALS

POLYRESIN 90%  
FIBERGLASS 10%

PACKAGING	BROWN BOX
ARTWORK	GREYSCALE
WARRANTY	1 Year

### DIMENSIONS

ITEM WEIGHT	33	CASE WEIGHT	41.8
ITEM LENGTH	16.93"	CASE LENGTH	35.83"
ITEM WIDTH	16.93"	CASE WIDTH	20.08"
ITEM HEIGHT	32.68"	CASE HEIGHT	14.11"



# VENICE

Charming, understated, and perfectly quaint. Like an image from a Florentine painting, three pots stacked haphazardly, water flowing serenely from one to the next. Revel in the beauty of this fountain piece, knowing that it is hand painted to achieve its rustic, aged look. Enjoy the sounds of this calming fountain while enjoying your patio with a friend or a good book.



Item#	UPC	Master Case UPC
Y98908	034613989087	20034613958681

### FEATURES

This ancient Italian ceramic pottery look is created from our custom Envirostone® material, with ProCoat® sealant to guard against UV and mild scratch damage.

Please protect this fountain against frost, snow, and heavy rain pooling at the base

For longevity, we recommend storage inside during the harshest winter weather.

Three tiers create a lively water sound, with the lowest tier gently lit. Includes UL listed Electronic Pump and one 10W light.

### MATERIALS

POLYRESIN 60%  
 CALCIUM CARBONATE 30%  
 FIBERGLASS 10%

PACKAGING	BROWN BOX
ARTWORK	GREYSCALE
WARRANTY	1 Year

### DIMENSIONS

ITEM WEIGHT	23.15	CASE WEIGHT	22
ITEM LENGTH	14.76"	CASE LENGTH	17.52"
ITEM WIDTH	14.76"	CASE WIDTH	17.52"
ITEM HEIGHT	27.17"	CASE HEIGHT	30.12"





# ARABELLA FOUNTAIN

This cascading bouquet of lilies looks up to receive a trickling rainfall from bloom to bloom with the Arabella Fountain. Make a statement of tasteful décor in your garden with this stunning steel floral design and water element in one. Bask in the peaceful rainfall-like sound, while sketching the orchids or reading up on the local restaurant reviews. The golden painted finish adds a warm touch of color to the steel arrangement, and the simple square base lifts up the stems to a total of 46" high. The fountain will do best in the shade, as sunlight encourages algae growth. Create a shady corner nook with your baker's rack of potted plants, or set it near a favorite reading spot on your covered patio, for your Arabella, to rest, refresh and enjoy your own little calming oasis, at home.



Item# Y95866      UPC 034613958663      Master Case UPC 20034613958667

### FEATURES

Floral fountain topping and base are created of 100% steel, with a painted finish.  
Includes UL listed electronic pump.

### MATERIALS

100% Steel (Galvanized Sheet)

PACKAGING	BROWN BOX
ARTWORK	GREYSCALE
WARRANTY	1 Year

### DIMENSIONS

ITEM WEIGHT	15	CASE WEIGHT	19.5
ITEM LENGTH	13.78"	CASE LENGTH	16.54"
ITEM WIDTH	13.78"	CASE WIDTH	16.54"
ITEM HEIGHT	46.06"	CASE HEIGHT	36.61"



# APPLE HILL

Enjoy a reminder from your visit to the country, with this endearing Apple Hill Water Fountain. At home in your front yard near a fruit tree or nestled in some shrubbery by your back door – this charming water element adds a touch of yesteryear to your garden oasis. Enjoy the soothing sounds of the water pouring into the basin, and the whimsy of the garden spigot streaming into the rustic basin below. The galvanized bin at the base can become a plant haven for a shade-loving fern or azalea. Add a feeling of Americana décor to your garden with this charming water fountain.



Item# Y95855      UPC 034613958557      Master Case UPC 20034613958551

### FEATURES

Made of 100% steel with a galvanized steel basin and bin, it includes a faux-rust finish on the steel spigot and legs. With easy assembly, just add water and plug in, to enjoy! UL Listed pump powers the fountain with its' 10.5 L (2.77 gal.) water capacity.

### MATERIALS

100% METAL (STEEL & GALVANIZED STEEL)

PACKAGING	BROWN BOX
ARTWORK	GREYSCALE
WARRANTY	1 Year

### DIMENSIONS

ITEM WEIGHT	11	CASE WEIGHT	14
ITEM LENGTH	16"	CASE LENGTH	16.54"
ITEM WIDTH	14"	CASE WIDTH	16.54"
ITEM HEIGHT	34"	CASE HEIGHT	23.60"





# FOUNTAINS



GHP Group, INC.  
6440 W Howard St., Niles, IL 60714  
1-877-447-4768 | [ghpgroupinc.com](http://ghpgroupinc.com)  
[OutdoorLiving@ghpgroupinc.com](mailto:OutdoorLiving@ghpgroupinc.com)