

## 1 YEAR LIMITED WARRANTY

### SAFE/LOCK BOX

BARSKA warrants this new safe/lock box to be free of defects in material and/or workmanship under normal use for a period of twelve (12) months from the date product is purchased. This limited warranty is delimited to repair or replacement only. This warranty does not cover damage caused by improper installation or maintenance. BARSKA disclaims all liability for incidental or consequential damages resulting from misuse, abuse, accident (such as dropping), fire, flood, service or repairs other than those performed by BARSKA, acts of nature, or arising out of any breach of this warranty. Altering the product under any circumstances will automatically void the warranty.

For service under this limited warranty, please have available the proof of purchase and the purchase date and location as well as a detailed description of the problem. This warranty is not transferable and only applies to the original purchaser with a proof of purchase from BARSKA or from an authorized dealer. This warranty applies only to products purchased within the United States, excluding Alaska, the Hawaiian Islands and all U.S. territories in the Caribbean and the Pacific.

BARSKA will examine and go through troubleshooting procedures, product repair or replacement of defective part(s) or units with new part(s) or provide a new unit, if necessary, during the warranty period. Reasonable shipping/handling charges may apply and are based on Barska sole discretion. Purchaser shall be required to prepay Shipping/handling charges with a check or money order to BARSKA at time product is returned. The Return Merchandise Authorization Number (RMA#) and shipping/handling charge MUST be obtained from BARSKA in advance of return. BARSKA shall not be liable for damages or loss occurring during shipping. Please visit via [www.barska.com](http://www.barska.com) or call 909.445.8168 to obtain the RMA#, Shipping/handling amount, and for more information.

BARSKA reserves the right to modify or discontinue, without prior notice to the purchaser, any model or style of the product. BARSKA will determine, at its sole discretion, whether a product will be repaired or replaced. BARSKA reserves the right to discontinue or change any feature of its products at any time. If an exact replacement or product is not available, BARSKA reserves the right to provide a part or product that matches as closely as possible.

#### LIMITATION OF REMEDIES

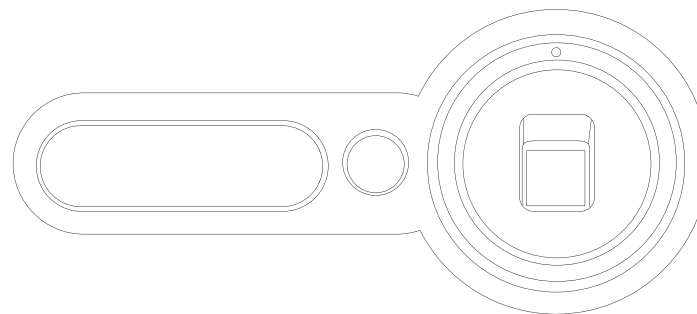
BARSKA disclaims any warranties, express or implied, whether of merchantability or fitness for a particular use, except as expressly set forth herein. The sole obligation of BARSKA under this limited warranty shall be to repair or replace the covered product, in accordance with the terms set forth herein. BARSKA expressly disclaims any lost profits, general, special, indirect or consequential damages which may result from breach of any warranty, or arising out of the use or inability to use any BARSKA product. Any warranties which are implied and which cannot be disclaimed shall be limited in duration to a term of one year from the date of original retail purchase.

Some states do not allow the exclusion or limitation of incidental or consequential damages or limitation on how long an implied warranty lasts, so the above limitations and exclusions may not apply to you.

BARSKA  
855 Towne Center Drive, Pomona, CA 91767



## User's Manual for Fireproof Biometric Safe



Read all instructions before using this safe.

## WARNING

| CONTENTS                      |                                 |    |
|-------------------------------|---------------------------------|----|
| Warning                       |                                 | 3  |
| Parts Of The Safe             |                                 | 4  |
| Getting Started               |                                 | 5  |
|                               | First Time User                 | 5  |
| Fingerprint Registration      |                                 | 6  |
|                               | Successful Registration         | 7  |
|                               | Unsuccessful Registration       | 7  |
|                               | Test Registered Fingerprint     | 7  |
| Close/Open Safe Door          |                                 | 7  |
|                               | Open Safe Door with Fingerprint | 7  |
|                               | Close Safe Door                 | 7  |
| Lock Out Mode                 |                                 | 8  |
| Reset to Factory Default Mode |                                 | 8  |
| Sound Options                 |                                 | 8  |
|                               | Sound Off                       | 8  |
|                               | Sound On                        | 8  |
| Lower Battery Warning         |                                 | 8  |
| Mounting Instructions         |                                 | 9  |
|                               | Floor Mounting                  | 9  |
| Care And Maintenance          |                                 | 9  |
| Trouble Shooting              |                                 | 10 |
| Warranty                      |                                 | 12 |

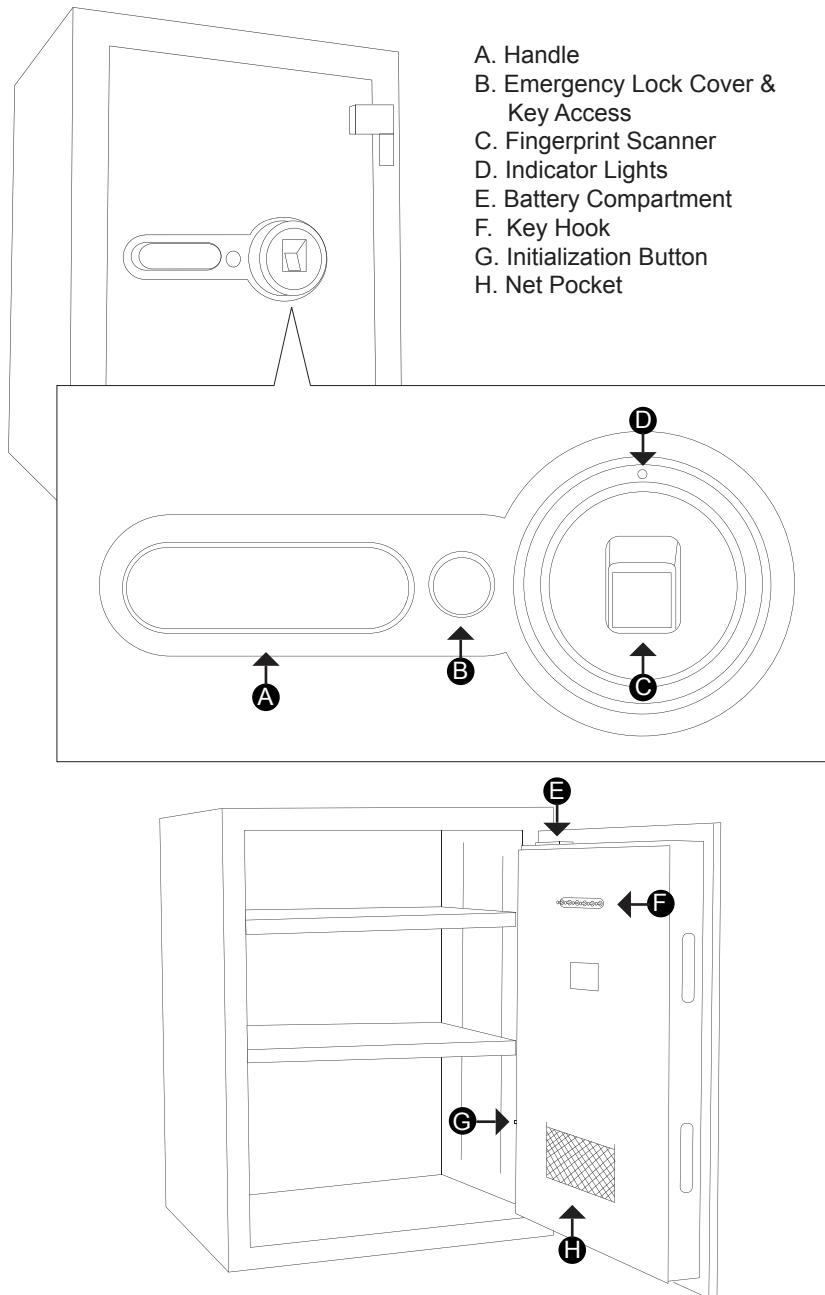
- Under Factory Default mode, the safe can be opened by any fingerprint. For security purposes, please register your own fingerprint immediately before you start to use the safe.
- Register at least two different fingerprints and test a few times before closing the safe door.
- Test with a non-registered fingerprint. If the safe opens, the safe is still in Factory Default mode.
- Avoid leaving door open and unattended; it will allow unauthorized individuals to reprogram the safe, gaining full access to the safe and the contents.
- Body of safe consists of two steel plates filled with a fire-retardant material.
- Do NOT store combustible materials in this unit.
- In the event of fire, we recommend caution when opening the safe. If you feel unsure about opening the safe because of the contents stored, contact your local fire department for assistance.
- Test the Emergency Keys and store them in a secure place; NOT inside of the safe.
- Test and make sure the safe works properly before mounting.
- Recommend to Check/Change battery every 4 to 6 months
- Mount the safe before use, the safe may tip forward if not properly mounted.
- Keep children away from safe; they should not play with or around the safe at any time. Children at play could accidentally get locked inside the safe or accidentally pull on the safe door causing safe to tip over if not properly mounted.
- Failure to follow these warnings could result in serious injury or death.

NOTE: BARSKA is not responsible for any damage or lost contents in the safe due to moisture.

NOTE: BARSKA is not responsible if the safe or its contents gets lost or stolen.

Note: All information, feature, and specification displayed herein are based on the data available at the time of publishing, thus they are subject to change without notice. All product pictures displayed herein are for illustration purposes only. The actual product may vary due to different circumstances.

## Parts Of The Safe



- A. Handle
- B. Emergency Lock Cover & Key Access
- C. Fingerprint Scanner
- D. Indicator Lights
- E. Battery Compartment
- F. Key Hook
- G. Initialization Button
- H. Net Pocket

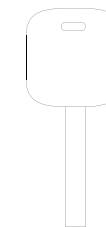
\* Actual Model May Vary

## Getting Started

### First Time User

Step 1: Remove Emergency keys from accessory package.

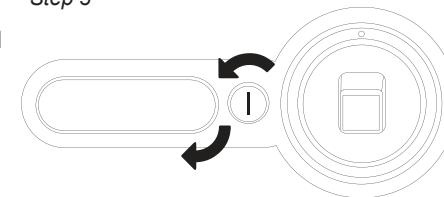
Step 1



Step 2: To expose the Emergency Key access, remove emergency Lock cover (B).

Step 3: Insert the Emergency Key and turn COUNTER-CLOCKWISE. Hold the key to open position and turn the handle (A) CLOCKWISE to open the door.

Step 3

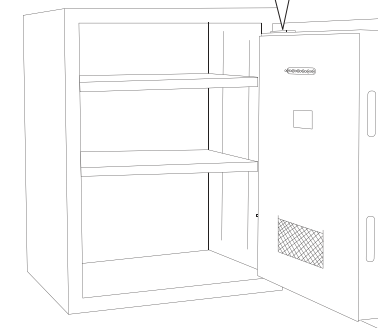


**NOTE:** Once operation is finished, please pull out the Emergency Key and Keep it in a safe place; NOT INSIDE of the safe.

Step 4: Install Batteries

Step 4

- a. With the door open, remove the battery cover (E) on side of door by sliding the cover.
- b. Insert 4 AA batteries by lining them up in a manner as indicated by the "+" and "-" signs.
- c. Put the arrow of the battery cover align to the arrow on the compartment, slide the batteries cover back into place. Restore the battery compartment cover.



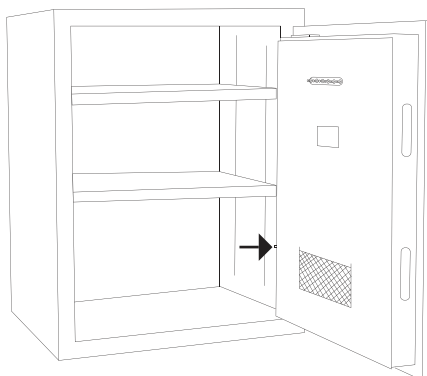
**NOTE:** DO NOT use any other type of non-alkaline battery. DO NOT MIX any alkaline and non-alkaline batteries.

## Fingerprint Registration

This biometric lock can register up to 100 fingerprints

Step 1: With safe door OPEN, press and release initialization button located inside of the safe. The lock will beep with the blue light flashing.

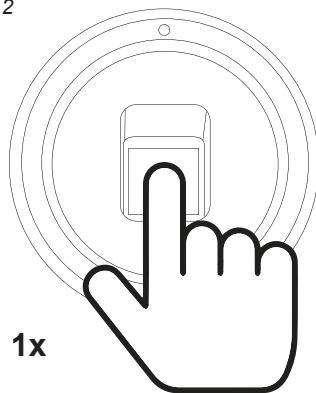
Step 1



NOTE: If you do not take any action after pressing the initialization button, the blue light will disappear after 10 seconds.

Step 2: Place desired finger on fingerprint scanner. The lock will have ONE BEEP sound followed by BLUE LIGHT, then RELEASE the finger from the scanner.

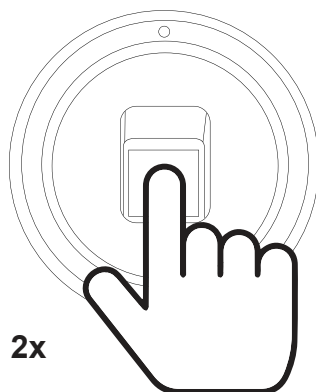
Step 2



Step 3: Place the same finger on the scanner to repeat Step 2 TWO more times.

Step 4: TWO BEEPs will be heard and TWO BLUE LIGHT flashing will be seen. Fingerprint registration is successfully completed.

Step 3



**NOTE:**

1. DO NOT choose a fingerprint with a scar or cut.
2. Make sure your hands are clean without dusts.
3. Make sure your finger is flatly placed at the center of fingerprint scanner for better identification.
4. In cold or dry climate conditions, your hands may be too dry, it will affect your fingerprint registration. We recommend to moisturize your hands and rub your fingers before registering.

## Successful Registration

2 BEEPs will be heard and 2 BLUE LIGHT flashing will be seen.

## Unsuccessful Registration

4 QUICK BEEPs will be heard with RED LIGHT flashing.

## Test Registered Fingerprint

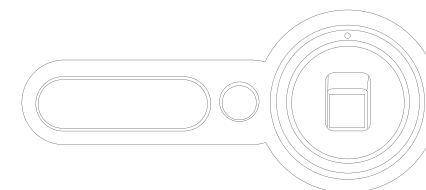
1. With safe door OPEN, turn handle to LOCK position extend the bolts out.
2. Touch fingerprint scanner to wake up the safe, and place registered finger on the scanner.
3. BLUE LIGHT flash 2 times along with 2 BEEPs, the safe can be UNLOCKED. The registration is successful.
4. SEVERAL BEEPs come with RED LIGHT flash, the registration is unsuccessful. Please follow the steps **Fingerprint Registration** to register.

## Close/Open Safe Door

### Open Safe Door with Fingerprint

Touch Fingerprint scanner to wake up the safe and place registered fingerprint on the scanner. 2 BLUE LIGHT will flash along with 2 BEEPs, then turn handle COUNTER- CLOCKWISE to UNLOCK the safe.

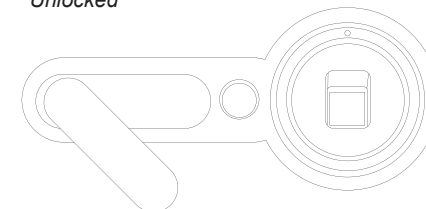
Locked



### Close Safe Door

Close the door and turn handle COUNTER- CLOCKWISE to LOCK position.

Unlocked



**NOTE:** If the door has not closed within 3 minutes, there will be a beep heard each second. If the setting for the Sound is Off, the safe will not beep.

## Lock Out Mode

1. THREE WRONG fingerprints are scanned consecutively; the fingerprint scanner will shut down for 15 seconds.
2. Another THREE WRONG fingerprints are scanned consecutively; the fingerprint scanner will shut down for 5 minutes.
3. After shutting down 5 minutes, if another THREE WRONG fingerprints are scanned consecutively; the fingerprint scanner will shut down for 15 minutes.
4. During the shutting down period, the fingerprint scanner will not accept any registered fingerprint. Only Emergency key can access the safe.

## Reset to Factory Default Mode

1. Press inside of the safe initialization button consecutively for at least 5 seconds. Then, the blue light will flash 3 times.
2. Under this operation, all registered fingerprints will be cancelled and the safe will return to the factory default mode.

**NOTE:** Under factory default mode, the safe can be opened by any fingerprint.

## Sound Options

### Sound Off

With safe door open, place your registered finger on the fingerprint scanner. After the fingerprint is confirmed successfully, place the same finger for another 5 seconds. The blue light will flash 2 times, then sound will be off.

### Sound On

Using the same operation as above, then you can turn on the sound

## Lower Battery Warning

1. The RED LIGHT will flash to remind you the system power is low.
2. If the power supply is insufficient, please use Emergency Key to open the safe and replace the batteries.
3. Battery replacement steps please refer to **Install Batteries**.

## Mounting Instructions

The safe must be mounted to the floor. Be aware of the load bearing. Failure to do so can result in personal injury and /or damage to property. Use appropriate tools when use override key to open the safe & replace the batteries.

### Floor Mounting

In order to mount the safe on the floor, please remove the feet at the bottom first. Use the hardware provided or counsel your local hardware retailers for your particular surface.

- Use proper drill tools depending on the type of floor.
- Measure the location of the pre-set drill holes, mark their exact position onto the floor.
- Drill the appropriate size holes for the anchors you are using.
- Carefully press the anchor into the holes at this time.
- Mount the safe by running screws from inside of the safe and securing to anchors; ensure the safe is mounted securely.

## Care and Maintenance

- To maximize the security and performance of the safe, keep keypad clean; use a dry cloth to remove any smudges after each use.
- Keep liquids away from the control panel. Spills on the control panel will cause damage and possibly electric shock.
- Secure safe in a proper area to prevent from falling and causing damage or injury.
- DO NOT disassemble the product.
- DO NOT use chemicals or cleaning agents to clean the safe.

## Troubleshooting

| THE PROBLEM                           | WHAT IS HAPPENING   | THE SOLUTIONS   |
|---------------------------------------|---|---|
| Unsuccessful Fingerprint Registration | 4 quick beeps along with red light flash                                      | You can reset to factory default mode   |
|                                       |   | Re-set fingerprint registration. Please refer to operation Fingerprint Registration   |
| Unable to Register Fingerprint        | 4 quick beeps along with red light flash                                      | DO NOT choose a fingerprint with a scar or cut.   |
|                                       |   | Make sure your hands are clean without dusts.   |
|                                       |   | Make sure your finger is flatly placed at the center of fingerprint scanner for better identification.  |
|                                       |   | In cold or dry climate conditions, your hands may be too dry, it will affect your fingerprint registration. We recommend to moisturize your hands and rub your fingers before registering.  |
| Cannot open/close safe                | Lower battery warnings, red light flash                                       | Please change 4 AA new batteries, follow operation Install Batteries.   |
|                                       | Low battery voltage may not have red light flash warning                      |   |
|                                       | Lock Out Mode: wrong fingerprint access. Please refer operation Lock Out Mode |   |
|                                       |   | Lock Out Mode delay time:<br>3 wrong fingerprints scanned, the safe will shut down 15 seconds;<br>another 3 wrong fingerprints scanned, delay time will become 5 minutes;<br>another 3 wrong fingerprints scanned, the delay time will become 15 minutes. |

| THE PROBLEM                         | WHAT IS HAPPENING | THE SOLUTIONS   |
|-------------------------------------|-------------------|---|
| Key Access/ Fingerprint do not work |                   | Please re-insert key and turn counter-clockwise, turn handle clockwise to open the door.                                  |
|                                     |                   | Please use registered fingerprint to access.  |
| Key locked inside                   | Key locked inside | Please go to Barska website key request for extra spare keys purchase. <a href="http://www.barska.com">www.barska.com</a> |
|                                     |                   | Barska is not liable for key availability, some keys might not be available due to discontinuation/ out of stock.         |