

APERTO MANUAL

OPN SOUND™

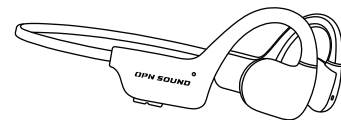


APERTO USER MANUAL

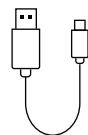


Scan for more languages
opnsound.com/pages/manuals

WHAT'S IN THE BOX

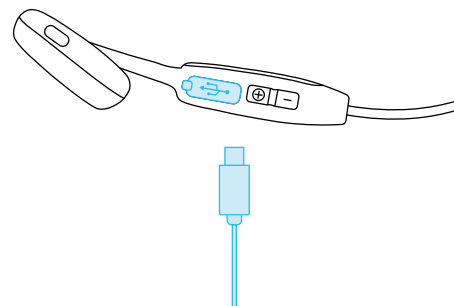


APERTO headphones



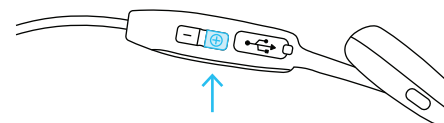
1 Charging cable

1 GETTING STARTED: CHARGE



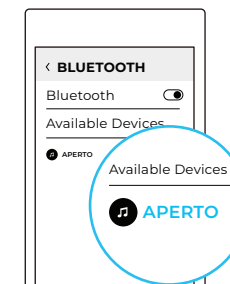
Plug in the included charging cable.
The LED will be red when charging
and turn blue when fully charged.

2 GETTING STARTED: PAIR

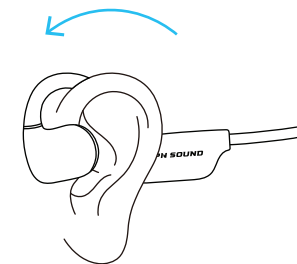


While off, press and hold the power button for 3 seconds to enter pairing mode.

Navigate to your devices Bluetooth® settings and select APERTO.

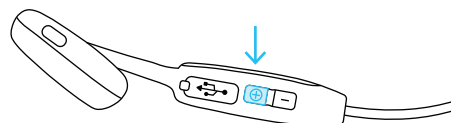


3 GETTING STARTED: WEAR



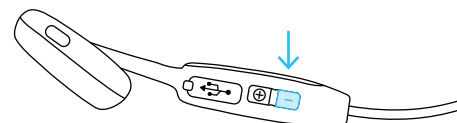
Loop headphones over and behind ears.

CONTROLS



- Power on/off: Press and hold for 5 secs
- Play/pause: Press 1x
- Answer/end call: Press 1x
- Reject call: Press 2x
- Volume up: Press 2x
- Previous track: Press 3x
- Restore factory settings: While off, press and hold for 10 secs

CONTROLS CONTINUED



- Voice assistant: Press and hold for 3 secs
- Volume down: Press 2x
- Next song: Press 3x

SPECIFICATIONS

Speaker type	Directional Audio
Bluetooth	v5.2
Battery life	10 hours
Standby time	160 hours
Charge time	2 hours
Weight	28g
Frequency response	20Hz-20KHz
Sensitivity	105 ± 3dB
Waterproof rating	IPX5
Wireless range	30 ft (10 meters)

PRECAUTIONS

1. Listening to loud music for a long time may cause discomfort. Please use medium volume when possible. Do not use high volume for long periods of time.
2. Using headphones will affect your perception of the surrounding environment. Pay attention when using headphones.
3. Do not remove or modify the headphones as this may cause damage or burn out.
4. Do not throw or twist on the headphones.
5. Keep headphones away from fire, hydration and high pressure equipment.
6. Not suitable for children under 10 yrs old. Contains small parts.
7. Do not classify headphones as household waste. Please send them to the local electrical equipment recycling station.
8. The charging pole piece has been treated for anti-corrosion, but seawater is highly corrosive. It is recommended to clean them after being in seawater.

Note: The company does not assume any responsibility for the loss of personal property caused by the violation of the above warnings.

ACTIVATE YOUR LIFETIME WARRANTY



We've got you covered! Register your lifetime warranty here:
opnsound.com/pages/warranty

EU DECLARATION OF CONFORMITY

We, Conduction Labs Inc. DBA OPN Sound, of 4800 N Federal Hwy, Suite B200, Boca Raton, FL 33431 USA, declare under our sole responsibility that the device is in Conformity with the following relevant Union harmonisation legislation:
Radio Equipment Directive (RED) 2014/53/EU

The complete declaration of conformity can be found here:
<https://opnsound.com/pages/documents>

Frequency Range	Max. Transmit Power
2402 - 2480mHz	4 dBm EIRP

MADE IN CHINA

