



STEVE GROFF'S

cedar meadow.farm



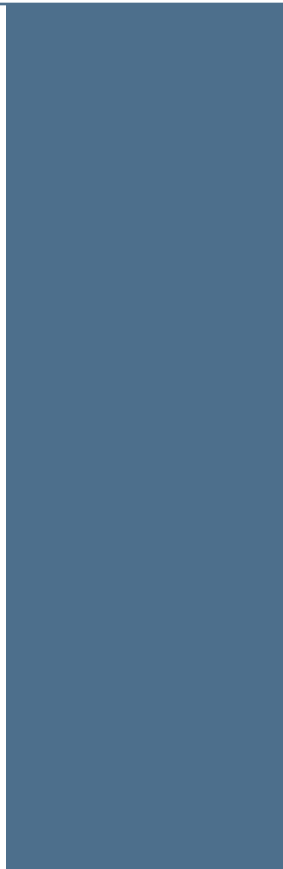
**“The world of CBD
is noisy and crowded!**

*How do you find
a good product??”*





The answer is surprisingly...
down-to-earth.



GROWN IN LANCASTER, PA

BETTER CBD

starts here.

Good soil is the foundation of everything.
But it isn't easy to come by.

Soil that is rich in nutrients and full of diverse life and organic matter is cultivated year 'round over decades with careful research and care.

Fortunately for you, that's exactly what we're all about.

Steve Groff is an expert in no-till and cover crop farming, and his soil is some of the best you'll find.

Along with a variety of nutrient-dense produce, Steve grows CBD hemp.

When a plant this amazing digs its roots into soil this good, awesome things happen.

But don't take our word for it.

Experience our single-farm sourced hemp oil extract products for yourself to discover just how much healthy soil matters.



Discover Better.

Better Soil. Better Oil.™

www.CedarMeadowFarm



Welcome
to your new favorite CBD products.



STEVE GROFF'S

cedar
meadow
farm

Quality products.

Compelling story.

Fair price.

BETTER.



"No Pain! I haven't been able to knit and after using Cedar Meadow Farm CBD oil, I can knit again!" — Janet

"I've suffered from chronic back pain and have tried everything. Your oil was the first good night's sleep I've had in over 10 years." — Matt

"Our dog is naturally nervous and on-edge. This has been a God-send during fireworks and thunderstorms to keep her calm." — Dave

"Best sleep I've had in years! Thank you!" — Joy

"We give her CBD oil every day and my 11-year-old dog acts like a puppy!" — James

STEVE GROFF'S

cedar meadow.farm

"The CBD oil from Cedar Meadow Farm has really changed my life. I was suffering from terrible heaches 25-28 days a month. I was offered a drug that would take them away but the cost was outrageous and I was just not able to afford it.

I had a sample of their CBD oil and gave it try. I started with a 1/4 dropper and immediately had some relief, but wasn't getting the results I had hoped for. So I upped the dosage to 1/2 of a dropper and my headaches dropped to about 4 a month. No side effects, all-natural and totally affordable. No words can express the relief I finally have.

Not only that, but I found that it helps during extemely stressful times in my job, just helping to keep me calm.

I was diagnosed and treated for Lymes and lingering side effects in my joints. The CBD has also helped get me to the point of being able to kneel and be able to run with my grandkids.

If you have ever thought about using it, you have to give Cedar Meadow Farm CBD oil a try. I have tried other CBD oils with no results. It has truly been life-saving." — Gail

Read so many more of our exceptional 5-star reviews online.



Quick-Start Onboarding Guide

ONE THING

If there's one thing you should know from this whole guide, it's this:

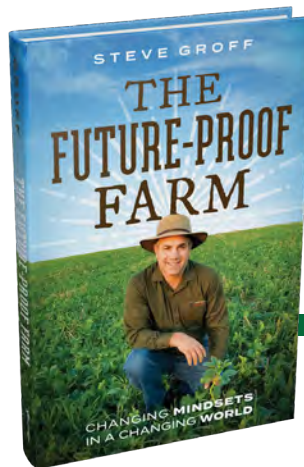
Our Hemp Oil Extract is sourced from a single farm and grown in some of the healthiest soil in the world!

Some companies make claims about organic, sustainable and regenerative agriculture growing methods.

But as you'll soon learn, *things are not always as they appear.*

Steve Groff's decades of management history and research-based experience in soil health makes Cedar Meadow Farm truly unique.

We're excited to tell you more.
Let's dig in.



TALKING POINT SUMMARY

- Better Soil. Better Oil.™
- Single-Farm Sourced Hemp Extract.
How many farms are in your oil?
- Seed-to-Shelf vertical integration is rare in the CBD industry.
- Put the "See" in CBD.
Transparency yields confidence.
- Very few (if any) hemp oil extract companies can claim *decades of research and experience in using regenerative agriculture principles.*

ABOUT US

Our Farm

Cedar Meadow Farm is a family-owned 200 acre farm in Lancaster County, PA. It was purchased in 1935 by Steve's grandparents, and the 4th generation of Groffs are now beginning to manage the operations.



The farm typically produces a variety of vegetables like tomatoes, squash, pumpkins and some corn and small grains as well.

In 2019, Steve began planting CBD hemp in an effort to experiment with the variables required to perfect growing this remarkable crop.

The most UNIQUE aspect of Cedar Meadow Farm is its decades long history of being a soil health research center and global leader in regenerative agriculture.

Even while yet in high school, Steve was greatly concerned by the soil eroding from his sloping fields. In 1982 he stopped tilling the soil on a few fields and began the practice of no-tillage, or no-till as it's known today.

His agriculture was noticed and he was invited to speak at farmer meetings and began hosting events at his farm so farmers, university and USDA researchers, and others could see for themselves how to implement these environmental friendly practices on their farms and those they influence.

In 1995, Dr. Ray Weil, world renowned soil scientist with the University of Maryland, asked Steve to be a part of a long term cover crop research project on Cedar Meadow Farm. It lasted 12 years. Building on that success, Dr. Weil invited Steve to collaborate on another cover crop project that birthed the Tillage Radish, a cover crop now used around the world!

It's this research-based methodology and tangible experience that goes into the current growth and production of CBD hemp here at Cedar Meadow Farm.

Our Philosophy

"Soil is meant to be covered."

That statement encompasses Steve's entire philosophy of farming. He uses no-till, cover crops, and other regenerative agriculture farming practices. That is, rather than till - or turn over - his soil between harvesting and planting seasons, he plants a wide variety of cover crops to "cover" the ground during winter and spring months.

It's a food growing system that mimics nature as close as possible and leverages principles in the way the soil was designed to function.

"Treating cover crops like cash crops" has yielded soil that is full of living roots year-round and a teeming diversity of microbes that build organic matter. These specific and intentional strategies are also the foundation for a nutrient-dense food product.

Our Farmer

Steve Groff is a farmer, author, consultant and speaker known internationally for his work in cover crops and no-till agriculture.

Steve has a history of innovating and pioneering in the area of environmentally healthy farming practices. Innovations like the cover crop roller crimper (which helps reduce herbicide use) and the Tillage Radish (which keeps leachable nutrients in the soil) have led him to be sought out locally, nationally and internationally as a consultant and speaker, particularly as sustainability practices are becoming a required necessity by global food supply chains.

OUR FAMILY

Meet the team! We're excited and ready to support you as you partner with Cedar Meadow Farm.



Steve Groff
Farmer & CEO



Cheri Groff
President



Megan Steinruck
COO



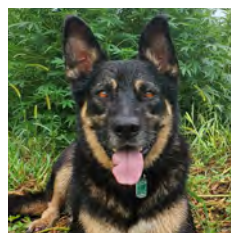
Matt Steinruck
Creative Director



David Groff
4th Generation Farmer



Naomi Groff
Fulfillment Center Manager



Grizzly
Hospitality / Security



ABOUT OUR OIL

What Sets Us Apart

WHY would anyone enter the CBD retail space? It's crowded, noisy and confusing. The challenges are plenty. But so are the opportunities.

We're confident in our unique value proposition: **Better Soil, Better Oil.**

Sure, it's a great line, but will it help you sell our hemp extract oil?

We're just at the beginning of our journey, but already, we're seeing extremely positive third-party test results indicating the robust profile of our oil. Collaborative research with publicly recognized entities, focused on the quality of our hemp extract, is actively continuing.

Transparency

We're putting the "See" in CBD.

Some brands available today don't have nearly the amount of CBD in the oil as what's advertised on the label. And some don't have any at all!

We offer crystal-clear authenticity. Our third-party COA shows what's in the bottle when our oil is produced for transparency & assurance (not just another regulatory tick-box.)

Feel confident in what you consume.

Single-Farm Sourced

How many farms are in your oil?

Did you know that the majority of Hemp Extracts on the market today are a combination of harvests from various farms? This merges many different soil practices and growing methodologies into one space for an unknown X-factor in the end result of a product.

Cedar Meadow Farm products are all derived directly from CBD hemp grown in our own carefully crafted nutrient-rich fields. This kind of seed-to-shelf vertical integration is very rare in the CBD industry!

ABOUT OUR SOIL

An Introduction to Soil Health

Good soil is the foundation of everything. We believe that when it's nurtured properly, carefully and intentionally, everything grown and produced from it is just naturally better.

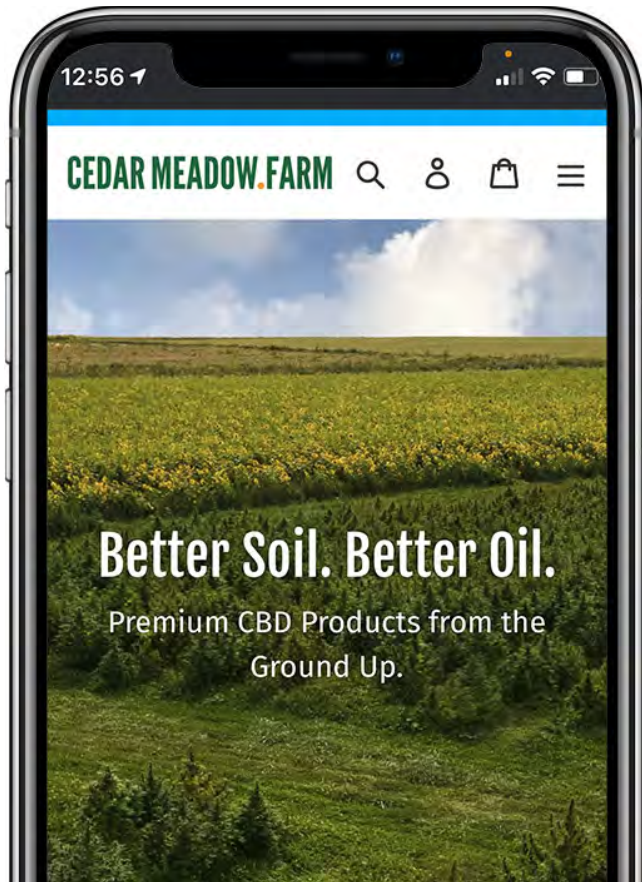
Unfortunately, the vast transformations in the farming industry over the last hundred years have laid waste to our nation's soil. Practices like tillage, the use of plastic mulch and damaging sprays have depleted the life of one of our most valuable natural resources.

Healthy soil is alive. It's full of organic matter, living roots and a wide diversity of biological species, nutrients and compounds.

This kind of soil not only produces healthier nutrient dense food. It's also exponentially better for the environment, preventing erosion and runoff, increasing carbon capture and providing an immensely positive environment for insects, wildlife and fish living downstream.

Cedar Meadow Farm has adopted and championed no-till and cover crop farming for over 25 years. This is NOT just a fine sounding environmental theory - it's been tested and proven and is now being used as an example for others as the path to Future-Proof Farms around the world!





LEARN MORE

Our website is full of blogs, videos, a rich FAQ and other content expanding on all the topics in this overview.

www.CedarMeadow.Farm

**THANK YOU FOR
PARTNERING WITH US
TO MAKE THE WORLD BETTER!**

Farmer Steve + Grizzly



Watch our story.



Collaboration and consulting services provided for:



NWF



UNIVERSITY OF MARYLAND



Wrangler



Cornell University



PennState

CHESAPEAKE BAY FOUNDATION

Questions?

717-723-3770

Hello@CedarMeadow.Farm

Visit SteveGroff.com for more interviews, articles, podcasts & videos.

Google "Steve Groff" and "Soil Health" to learn more about global influence!

CedarMeadow.Farm
Contact: Steve Groff
Steve@SteveGroff.com
717-575-6778

Press Release

New CBD Line Launches – with its Roots Dug Deeply into Soil Health

CBD Oil is one of the hottest trends on the market right now, so new entries into the industry aren't typically newsworthy.

Steve Groff's Cedar Meadow Farm Hemp Oil Extract (usually referred to as "CBD Oil") is different based on four simple words: **Better Soil, Better Oil.**

The CBD oil sold by Cedar Meadow Farm is "single-farm sourced." That is, what customers buy in the retail bottle comes directly from Steve's farm. Very few brands can make this vertically-integrated claim.

Even more importantly, the CBD hemp plants growing on Steve's farm have their roots dug deeply into some of the most remarkable soil in the country. And this is what makes Cedar Meadow Farm so special.

Steve Groff is a farmer, author, consultant and speaker known internationally for his work in cover-crops and no-till agriculture. Steve has a history of innovating and pioneering in the area of environmentally healthy farming practices. His advice has led him to be sought out locally in the southeast Pennsylvania region, as well as nationally and internationally as a consultant and speaker, particularly as regenerative agriculture is becoming a required necessity by global food supply chains.

These insights are the foundations of his new book, *The Future-Proof Farm; Changing Mindsets in a Changing World.*

Implementing these practices on Cedar Meadow Farm for over 40 years has resulted in soil that has been independently tested to be even better than organic farms, teeming with life, nutrients and living roots year-round. These practices are being adopted around the world.

This story of soil health is one that has been relatively quiet and confined to a conservation audience. However, its significance is unquestionable on a global scale. It has implications on climate, environmental health, water, erosion, plant and animal health, and ultimately, the future of our planet-at-large.

This story has recently gain popularity in the Netflix documentary, Kiss the Ground, narrated by Woody Harrelson and featuring many soil health experts with whom Steve has direct ties.

Ray Archuleta, one of the prominent figures in the film, provides a glowing review of Steve's book on the Cedar Meadow Farm website.

To Cedar Meadow Farm, the story of soil health is what grounds this new brand for a CBD market seeking something refreshing, new, transparent and perhaps with an even greater degree of efficacy.

In independent third-party testing, Cedar Meadow Farm's oil has reported a remarkable diversity of cannabinoids in addition to CBD.

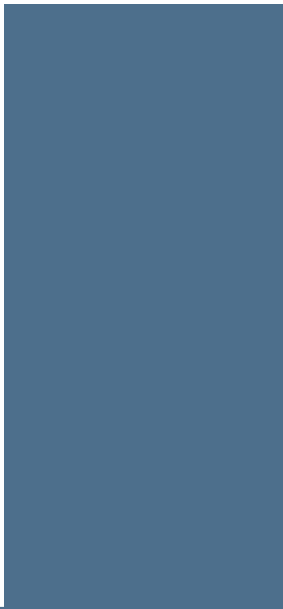
In addition, the unique single-farm sourcing is a major asset to the brand. Why? Many hemp oil extracts on the market today are a combination of harvests from various farms. This merges many different soil management practices and growing methodologies into one space for an unknown X-factor in the end result of the product.

Keeping the product sourced to a single farm with expertise in regenerative practices provides a strong level of confidence for consumers.

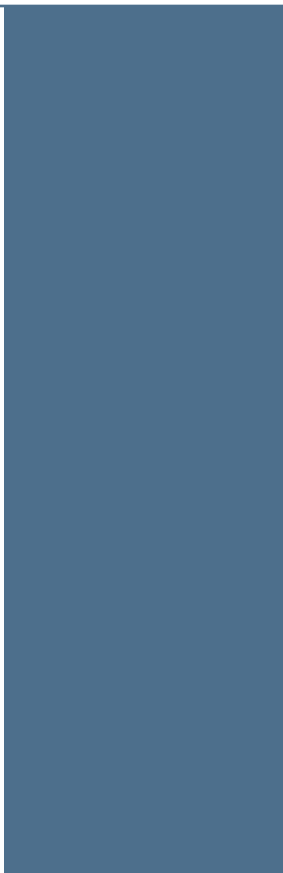
Behind the scenes, additional stories are developing, including high-level efficacy testing as well as major promotional and marketing exposure that makes this brand one to watch.

Distribution & Wholesale options are available, as well as an affiliate program which encourages fans of the product to promote it while providing residual benefits for their efforts.

For more information or to order, visit [CedarMeadow.Farm](https://cedar-meadow-farm.com)



Our Products



NOBODY ELSE COMES CLOSE.

Single-Farm Sourced

(Unlike most CBD sourced from various farms & farming practices.)

From Lancaster, PA

(Yes, Colorado, we can grow it here, too – and have since the 1600s.)

Rooted in Healthy Soil

(Some of the best on the planet . . . and it matters!)

Beyond-Organic Practices

(Independent tests rank us among the best-in-class.)

Physiological functions affected by cannabinoids like CBD include mood & sleep, motor control, pain perception, immune functions, appetite, digestion & metabolism.



BETTER Full-Spectrum Oil
Original & Peppermint Flavor
1200mg & 1500mg
Typically taken sub-lingually
MSRP \$120 & \$150



BETTER Broad-Spectrum THC-Free Oil
Wintergreen Flavor
1200mg
Typically taken sub-lingually
MSRP \$120



BETTER FULL-Spectrum OIL
Bacon-Flavor for Pets
600mg
Typically mixed in food or on treats
MSRP \$65

CBD topical lotion & salve is ideal for relieving daily aches and pains & reducing inflammation.
Calendula essential oil extract has been used to treat a variety of skin ailments, including infections, fungus, rashes & wounds.



Relief Full Spectrum Lotion
Calendula & Citrus w/a hint of Methol
5oz and 1oz Airless Pump
1000mg & 200mg
MSRP \$80 & \$40



BECAUSE Full Spectrum Lotion
Same size & specs as Relief,
but without Menthol.
Targeted branding for Moms
MSRP \$80 & \$40



Relief Full Spectrum Salve
Calendula & Citrus
1.6oz and .6oz container
600mg & 225mg
MSRP \$75 & \$40



UPDATED 2023 Branding



Here's to "better."

To those who strive to go beyond the ordinary . . .

who put in just a little extra effort to improve the most important parts of life.

For us, "better" means using *time-tested, future-proof & earth-friendly* farming practices that even *exceed* agricultural industry standards.

What you're holding comes directly from the hemp grown in our 30+ year regenerative fields.

Does that make a difference?
You bet it does.

Now thanks to you, we're **BETTER** together.

www.CedarMeadow.Farm



**Our COA testing is done as it's growing in the field,
at harvest, at extraction and at production**

Comprehensive COA's are available upon request.

**All product COA's can be found
by product batch number at
[VerifyHemp.com](https://www.verifyhemp.com)**

CERTIFICATE OF ANALYSIS

ISO/IEC 17025:2017 ACCREDITATION #103104



Order #: 82494
 Order Name: Natural 1200mg
 Full Spectrum
 Batch#: 21L0011
 Received: 08/07/2021
 Completed: 08/09/2021

Cedar Meadow Farm, LLC
 Holtwood PA,
 (717) 723-3770
 megan@cedar-meadow.farm



Sample



0.085% D9-THC	4.931% Total CBD
1,499.6 mg Cannabinoids per unit	1,398.0 mg CBD per unit

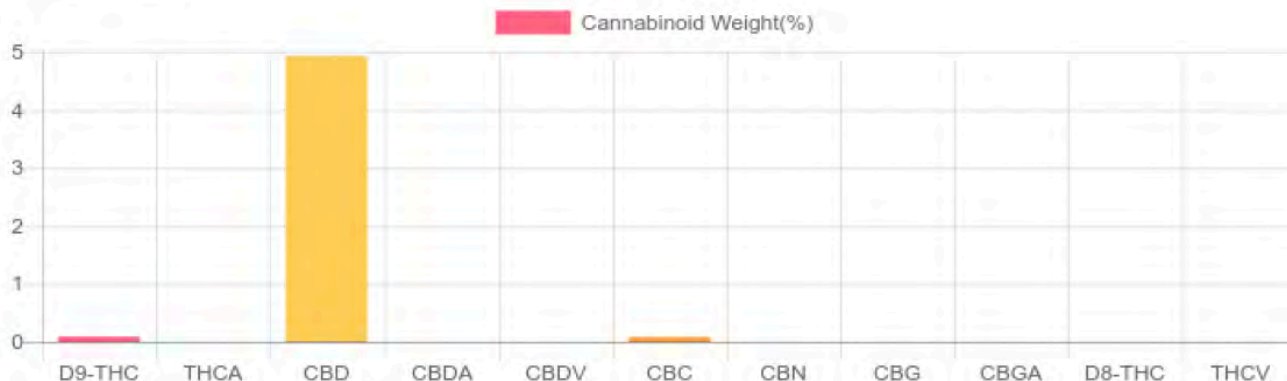
1 unit = 30 ml per unit x density (0.945) x Cannabinoid concentration

Cannabinoids Test

SHIMADZU INTEGRATED UPLC-PDA
 GSL SOP 400

UPLOADED: 08/09/2021 09:03:27

Cannabinoids	LOQ	weight(%)	mg/g	mg/unit
D9-THC	10 PPM	0.085%	0.855	24.239
THCA	10 PPM	N/D	N/D	N/D
CBD	10 PPM	4.931%	49.311	1,397.967
CBDA	20 PPM	N/D	N/D	N/D
CBDV	20 PPM	N/D	N/D	N/D
CBC	10 PPM	0.081%	0.812	23.020
CBN	10 PPM	N/D	N/D	N/D
CBG	10 PPM	N/D	N/D	N/D
CBGA	20 PPM	N/D	N/D	N/D
D8-THC	10 PPM	N/D	N/D	N/D
THCV	10 PPM	N/D	N/D	N/D
TOTAL D9-THC		0.085%	0.085%	24.2
TOTAL CBD*		4.931%	49.311	1,398.0
TOTAL CANNABINOIDS		5.289%	52.896	1,499.6



Reporting Limit 10 ppm
 *Total CBD = CBD + CBDA x 0.877
 N/D - Not Detected, B/LOQ - Below Limit of Quantification

Ben Witten, MS, MT., Lab Director

Green Scientific Labs
 info@greenscientificlabs.com
 1-833 TEST CBD



Green Scientific Labs uses its best efforts to deliver high quality results and to verify that the data contained therein are based on sound scientific judgment and levels listed are guidelines only and all data was reported based on standard laboratory procedures and deviations. However Green Scientific Labs makes no warranties or claims to that effect and further shall not be liable for any damage or misrepresentation that may result from the use or misuse of the data contained herein in any way. Further, Green Scientific Labs makes no claims regarding representations of the analyzed sample to the larger batch from which it was taken. Data and information in this report are intended solely for the individual(s) for whom samples were submitted and as part of our strict confidentiality policy, Green Scientific Labs can only discuss results with the original client of record.

CERTIFICATE OF ANALYSIS

ISO/IEC 17025:2017 ACCREDITATION #103104



Order #: 74335
 Order Name: Wintergreen
 1200mg
 Batch#: 21R0010
 Received: 03/29/2021
 Completed: 03/31/2021

Cedar Meadow Farm, LLC
 Holtwood PA,
 (717) 723-3770
 megan@cedar-meadow.farm



Sample



N/D
D9-THC

4.223%
Total CBD

1,261.9 mg
Cannabinoids per
unit

1,197.2 mg
CBD per
unit

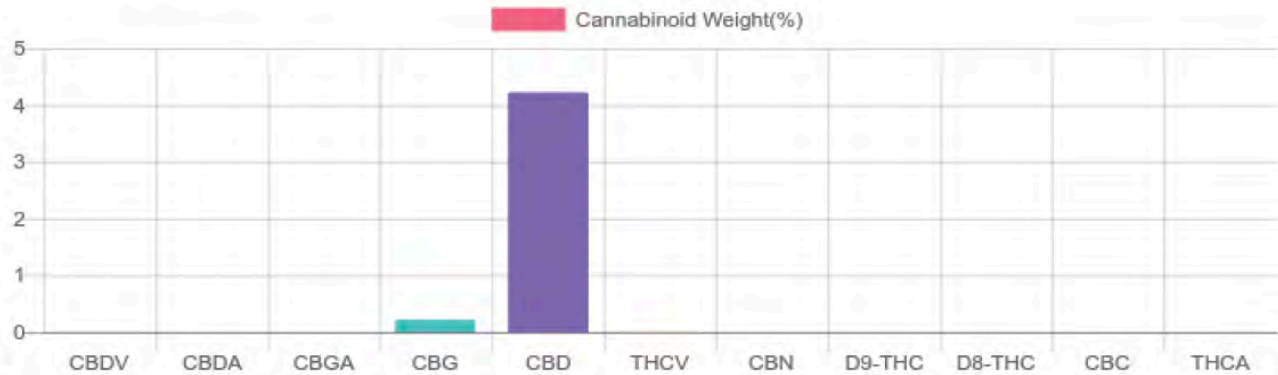
1 unit = 30 ml per unit x density (.945) x
Cannabinoid concentration

Cannabinoids Test

SHIMADZU INTEGRATED UPLC-PDA
 GSL SOP 400

UPLOADED: 03/31/2021 11:26:30

Cannabinoids	LOQ	weight(%)	mg/g	mg/unit
D9-THC	10 PPM	N/D	N/D	N/D
THCA	10 PPM	N/D	N/D	N/D
CBD	10 PPM	4.223%	42.229	1,197.2
CBDA	20 PPM	N/D	N/D	N/D
CBDV	20 PPM	0.006%	0.056	1.6
CBC	10 PPM	N/D	N/D	N/D
CBN	10 PPM	N/D	N/D	N/D
CBG	10 PPM	0.216%	2.160	61.2
CBGA	20 PPM	N/D	N/D	N/D
D8-THC	10 PPM	N/D	N/D	N/D
THCV	10 PPM	0.007%	0.068	1.9
TOTAL D9-THC		N/D	N/D	N/D
TOTAL CBD*		4.223%	42.229	1,197.2
TOTAL CANNABINOIDS		4.452%	44.513	1,261.9



Reporting Limit 10 ppm
 *Total CBD = CBD + CBDA x 0.877
 N/D - Not Detected, B/LOQ - Below Limit of Quantification

Dr. Andrew Hall, Ph.D., Chief Scientific Officer

Ben Witten, MS, MT., Lab Director

Green Scientific Labs
 info@greenscientificlabs.com
 1-833 TEST CBD



Green Scientific Labs uses its best efforts to deliver high quality results and to verify that the data contained therein are based on sound scientific judgment and levels listed are guidelines only and all data was reported based on standard laboratory procedures and deviations. However Green Scientific Labs makes no warranties or claims to that effect and further shall not be liable for any damage or misrepresentation that may result from the use or misuse of the data contained herein in any way. Further, Green Scientific Labs makes no claims regarding representations of the analyzed sample to the larger batch from which it was taken. Data and information in this report are intended solely for the individual(s) for whom samples were submitted and as part of our strict confidentiality policy, Green Scientific Labs can only discuss results with the original client of record.

CERTIFICATE OF ANALYSIS

ISO/IEC 17025:2017 ACCREDITATION #103104



Order #: 75186
 Order Name: Peppermint
 (1500mg per ounce)
 Batch#: 21R0010
 Received: 04/08/2021
 Completed: 04/12/2021

Cedar Meadow Farm, LLC
 Holtwood PA,
 (717) 723-3770
 megan@cedar-meadow.farm



Sample



0.118%
D9-THC

5.726%
Total CBD

1,703.6 mg
Cannabinoids per unit

1,623.3 mg
CBD per unit

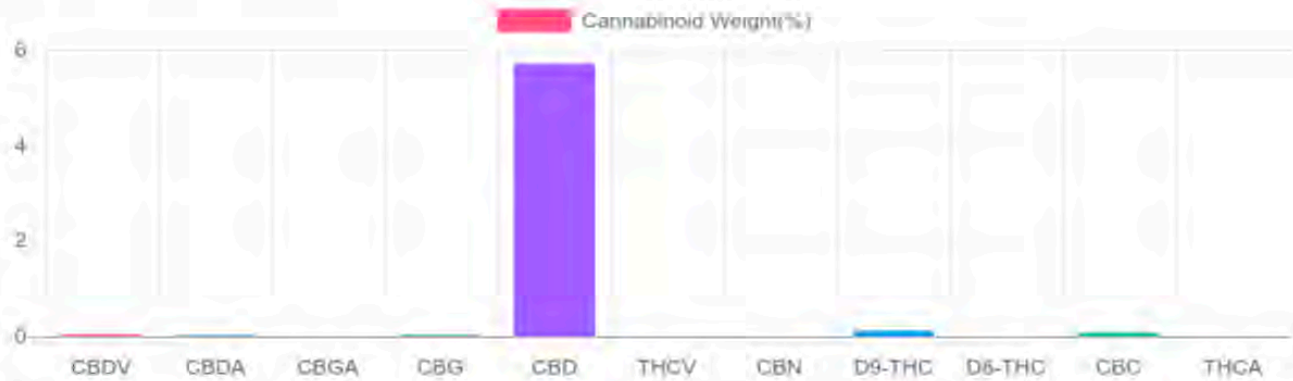
1 unit = 30 ml per unit x density (0.945) x Cannabinoid concentration

Cannabinoids Test

SHIMADZU INTEGRATED UPLC-PDA
 GSL SOP 400

UPLOADED: 04/12/2021 11:58:27

Cannabinoids	LOQ	weight(%)	mg/g	mg/unit
D9-THC	10 PPM	0.118%	1.178	33.396
THCA	10 PPM	N/D	N/D	N/D
CBD	10 PPM	5.707%	57.066	1,617.821
CBDA	20 PPM	0.022%	0.222	6.294
CBDV	20 PPM	0.046%	0.455	12.899
CBC	10 PPM	0.085%	0.849	24.069
CBN	10 PPM	N/D	N/D	N/D
CBG	10 PPM	0.032%	0.321	9.100
CBGA	20 PPM	N/D	N/D	N/D
D8-THC	10 PPM	N/D	N/D	N/D
THCV	10 PPM	N/D	N/D	N/D
TOTAL D9-THC		0.118%	0.118%	33.4
TOTAL CBD*		5.726%	57.261	1,623.3
TOTAL CANNABINOIDS		6.010%	60.091	1,703.6



Reporting Limit 10 ppm
 *Total CBD = CBD + CBDA x 0.877
 N/D - Not Detected, B/LOQ - Below Limit of Quantification

Dr. Andrew Hall, Ph.D., Chief Scientific Officer

Ben Witten, MS, MT., Lab Director

Green Scientific Labs
 info@greenscientificlabs.com
 1-833 TEST CBD



Green Scientific Labs uses its best efforts to deliver high quality results and to verify that the data contained therein are based on sound scientific judgment and levels listed are guidelines only and all data was reported based on standard laboratory procedures and deviations. However Green Scientific Labs makes no warranties or claims to that effect and further shall not be liable for any damage or misrepresentation that may result from the use or misuse of the data contained herein in any way. Further, Green Scientific Labs makes no claims regarding representations of the analyzed sample to the larger batch from which it was taken. Data and information in this report are intended solely for the individual(s) for whom samples were submitted and as part of our strict confidentiality policy, Green Scientific Labs can only discuss results with the original client of record.

CERTIFICATE OF ANALYSIS

ISO/IEC 17025:2017 ACCREDITATION #103104



Order #: 65264
 Order Name: Cedar Meadow Farms Bacon Pet Oil
 Batch#: 20T0010
 Received: 11/02/2020
 Completed: 11/04/2020

Cedar Meadow Farm, LLC
 Holtwood PA,
 (717) 723-3770
 megan@cedar-meadow.farm



Sample



0.052%
D9-THC

2.082%
Total CBD

626.0 mg
Cannabinoids per unit

590.2 mg
CBD per unit

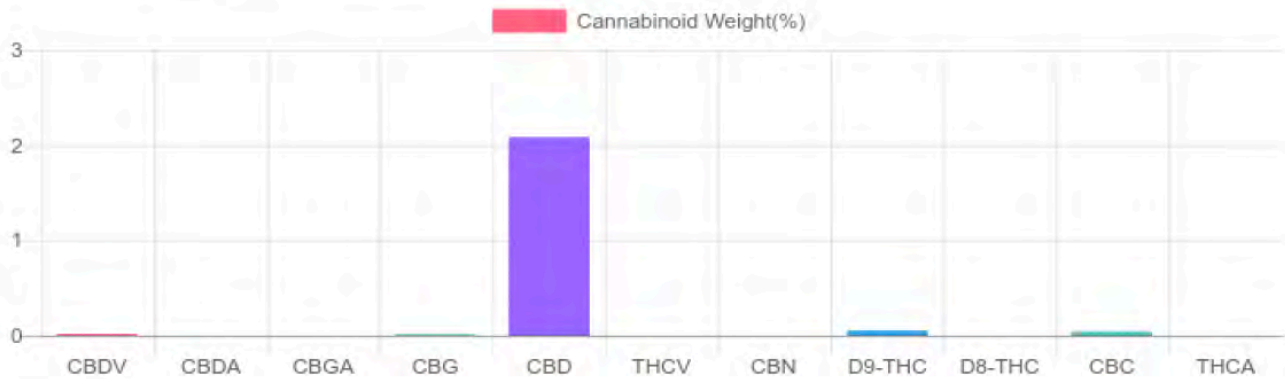
1 unit = 30 ml per unit x density (.945) x Cannabinoid concentration

Cannabinoids Test

SHIMADZU INTEGRATED UPLC-PDA
 GSL SOP 400

UPLOADED: 11/04/2020 10:02:15

Cannabinoids	LOQ	weight(%)	mg/g	mg/unit
D9-THC	10 PPM	0.052%	0.517	14.7
THCA	10 PPM	N/D	N/D	N/D
CBD	10 PPM	2.082%	20.818	590.2
CBDA	20 PPM	N/D	N/D	N/D
CBDV	20 PPM	0.017%	0.170	4.8
CBC	10 PPM	0.043%	0.429	12.2
CBN	10 PPM	N/D	N/D	N/D
CBG	10 PPM	0.014%	0.143	4.1
CBGA	20 PPM	N/D	N/D	N/D
D8-THC	10 PPM	N/D	N/D	N/D
THCV	10 PPM	N/D	N/D	N/D
TOTAL D9-THC		0.052%	0.052%	14.7
TOTAL CBD*		2.082%	20.818	590.2
TOTAL CANNABINOIDS		2.208%	22.077	626.0



Reporting Limit 10 ppm
 *Total CBD = CBD + CBDA x 0.877
 N/D - Not Detected, B/LOQ - Below Limit of Quantification

Dr. Andrew Hall, Ph.D., Chief Scientific Officer

Ben Witten, MS, MT., Lab Director

Green Scientific Labs
 info@greenscientificlabs.com
 1-833 TEST CBD



Green Scientific Labs uses its best efforts to deliver high quality results and to verify that the data contained therein are based on sound scientific judgment and levels listed are guidelines only and all data was reported based on standard laboratory procedures and deviations. However Green Scientific Labs makes no warranties or claims to that effect and further shall not be liable for any damage or misrepresentation that may result from the use or misuse of the data contained herein in any way. Further, Green Scientific Labs makes no claims regarding representations of the analyzed sample to the larger batch from which it was taken. Data and information in this report are intended solely for the individual(s) for whom samples were submitted and as part of our strict confidentiality policy, Green Scientific Labs can only discuss results with the original client of record.

CERTIFICATE OF ANALYSIS

ISO/IEC 17025:2017 ACCREDITATION #103104



Order #: 88256
 Order Name: Relief Lotion
 (150mg per ounce)
 Batch#: 21D0010
 Received: 12/14/2021
 Completed: 12/20/2021

Cedar Meadow Farm, LLC
 Holtwood PA,
 (717) 723-3770
 megan@cedar-meadow.farm



Sample



N/D Total D9-THC	0.517% Total CBD
152.5 mg Cannabinoids per unit	146.6 mg CBD per unit

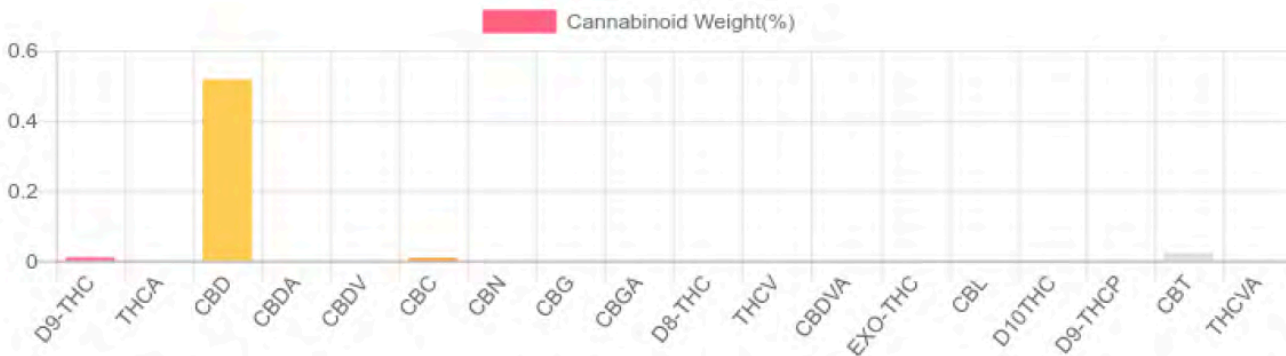
1 unit = 28.3495 grams per unit x
 Cannabinoid concentration

Cannabinoids Test

HPLC-DAD
 GSL SOP 400

UPLOADED: 12/17/2021 13:40:27

Cannabinoids	LOQ(mg/g)	LOD(mg/g)	weight(%)	mg/g	mg/unit
D9-THC	0.1954	0.0645	B/LOQ	B/LOQ	B/LOQ
THCA	0.1954	0.0645	N/D	N/D	N/D
CBD	0.1954	0.0645	0.517%	5.170	146.567
CBDA	0.1954	0.0645	N/D	N/D	N/D
CBDV	0.1954	0.0645	N/D	N/D	N/D
CBC	0.1954	0.0645	B/LOQ	B/LOQ	B/LOQ
CBN	0.1954	0.0645	N/D	N/D	N/D
CBG	0.1954	0.0645	N/D	N/D	N/D
CBGA	0.1954	0.0645	N/D	N/D	N/D
D8-THC	0.1954	0.0645	N/D	N/D	N/D
THCV	0.1954	0.0645	N/D	N/D	N/D
CBDVA	0.1954	0.0645	N/D	N/D	N/D
EXO-THC	0.1954	0.0645	N/D	N/D	N/D
CBL	0.1954	0.0645	N/D	N/D	N/D
D10THC	0.1954	0.0645	N/D	N/D	N/D
D9-THCP	0.1954	0.0645	N/D	N/D	N/D
CBT	0.1954	0.0645	0.021%	0.210	5.953
THCVA	0.1954	0.0645	N/D	N/D	N/D
TOTAL D9-THC			N/D	N/D	N/D
TOTAL CBD*			0.517%	5.170	146.6
TOTAL CANNABINOIDS			0.538%	5.380	152.5

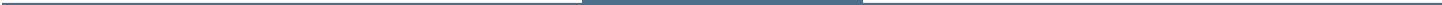
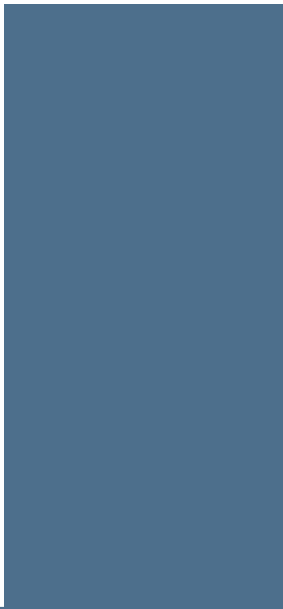


*Total CBD = CBD + CBDA x 0.877
 N/D - Not Detected, B/LOQ - Below Limit of Quantification

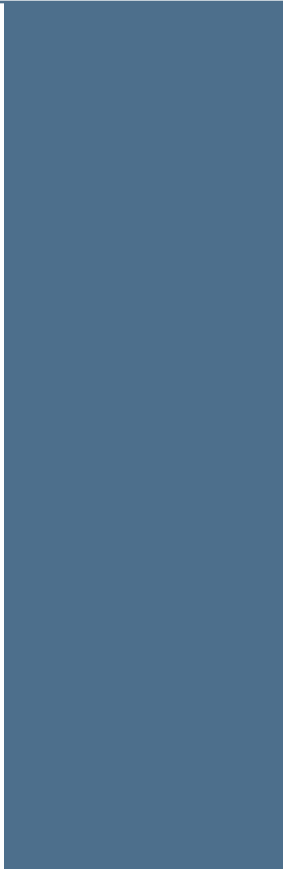
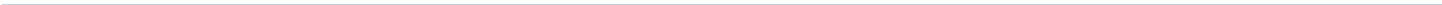
Ben Witten, MS, MT., Lab Director

Green Scientific Labs
 info@greenscientificlabs.com
 1-833 TEST CBD





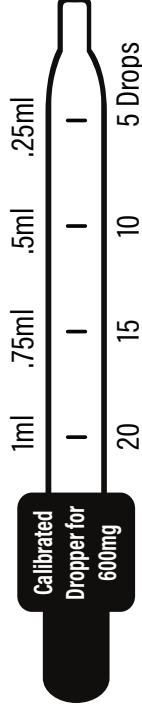
CBD Oil Dosage Guides



STEVE GROFF'S

cedar meadow.farm

DOSAGE GUIDELINES: 600mg



We've found that dosing is not an exact science. It's always best to start with a lower suggested dose for a few days and adjust as necessary. This chart is calculated based on 1mg per 10lbs of body weight.

Each 1 oz./30ml bottle contains about 600 drops.

One full dropper (1 ml) contains about 20 drops.

600mg/30ml bottle has 1mg of CBD per drop or 20mg/milliliter.

Questions?

Visit our website at www.CedarMeadow.Farm or call 717-723-3770

Better Soil. Better Oil.[™]

Note: These recommendations are estimations and are not to be considered medical advice. The results displayed are based on our own personal objective data and should be treated as a 3rd party opinion. As many factors can influence hemp extract dosage for each individual, the results from this calculator may not be accurate for you. Please consult your doctor or medical professional before using CBD.

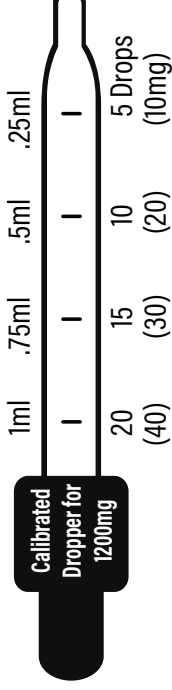
Statements regarding these products have not been evaluated by the Food and Drug Administration. These products are not intended to diagnose, treat, cure or prevent any disease. Results from products may vary.

Body Weight	Mild Dose (Start here)	Moderate Dose	High Dose
10 lbs	1 drop	3 drops	5 drops
20 lbs	2 drops	6 drops	10 drops
30 lbs	3 drops	9 drops	15 drops
40 lbs	4 drops	12 drops	20 drops
50 lbs	5 drops	15 drops	25 drops
60 lbs	6 drops	18 drops	30 drops
70 lbs	7 drops	21 drops	35 drops
80 lbs	8 drops	24 drops	40 drops
90 lbs	9 drops	24 drops	45 drops
100 lbs	10 drops	27 drops	50 drops
110 lbs	11 drops	30 drops	55 drops
120 lbs	12 drops	33 drops	60 drops
130 lbs	13 drops	36 drops	65 drops
140 lbs	14 drops	42 drops	70 drops
150 lbs	15 drops	45 drops	75 drops
160 lbs	16 drops	48 drops	80 drops
170 lbs	17 drops	51 drops	85 drops
180 lbs	18 drops	54 drops	90 drops
190 lbs	19 drops	57 drops	95 drops
200 lbs	20 drops	60 drops	100 drops
210 lbs	21 drops	63 drops	105 drops

STEVE GROFF'S

cedar meadow.farm

DOSAGE GUIDELINES: 1200mg



We've found that dosing is not an exact science. It's always best to start with a lower suggested dose for a few days and adjust as necessary. This chart is calculated based on 1mg per 10lbs of body weight.

Each 1oz./30ml bottle contains about 600 drops.

One full dropper (1ml) contains about 20 drops.

1200mg/30ml bottle has 2mg of CBD per drop or 40mg/1milliliter.

Questions?

Visit our website at www.CedarMeadow.Farm or call 717-723-3770

Better Soil. Better Oil.™

Note: These recommendations are estimations and are not to be considered medical advice. The results displayed are based on our own personal objective data and should be treated as a 3rd party opinion. As many factors can influence hemp extract dosage for each individual, the results from this calculator may not be accurate for you. Please consult your doctor or medical professional before using CBD.

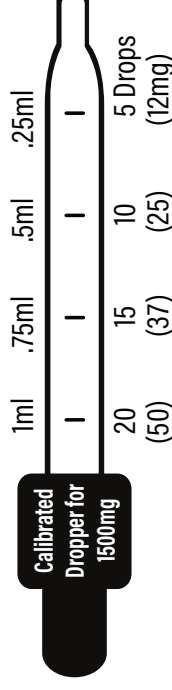
Statements regarding these products have not been evaluated by the Food and Drug Administration. These products are not intended to diagnose, treat, cure or prevent any disease. Results from products may vary.

Body Weight	Mild Dose (Start here)	Moderate Dose	High Dose
100 lbs	5-10 drops	11-25 drops	25-30 drops
110 lbs	6-11 drops	12-27 drops	28-33 drops
120 lbs	6-12 drops	13-30 drops	30-36 drops
130 lbs	7-13 drops	14-32 drops	33-39 drops
140 lbs	7-14 drops	15-35 drops	35-42 drops
150 lbs	8-15 drops	16-37 drops	38-45 drops
160 lbs	8-16 drops	17-40 drops	40-48 drops
170 lbs	9-17 drops	18-42 drops	43-51 drops
180 lbs	9-18 drops	19-45 drops	45-54 drops
190 lbs	10-19 drops	20-47 drops	48-57 drops
200 lbs	10-20 drops	21-50 drops	50-60 drops
210 lbs	11-21 drops	22-52 drops	53-63 drops
220 lbs	11-22 drops	23-55 drops	55-66 drops
230 lbs	12-23 drops	23-57 drops	58-69 drops
240 lbs	12-24 drops	25-60 drops	60-72 drops
250 lbs	13-25 drops	26-62 drops	63-75 drops
260 lbs	13-26 drops	27-65 drops	65-78 drops
270 lbs	14-27 drops	28-67 drops	68-82 drops
280 lbs	14-28 drops	29-70 drops	70-84 drops
290 lbs	15-29 drops	30-72 drops	73-87 drops
300 lbs	15-30 drops	31-75 drops	75-90 drops

STEVE GROFF'S

cedar meadow.farm

DOSAGE GUIDELINES: 1500mg



We've found that dosing is not an exact science. It's always best to start with a lower suggested dose for a few days and adjust as necessary. This chart is calculated based on 1mg per 10lbs of body weight.

Each 1oz./30ml bottle contains about 600 drops.

One full dropper (1ml) contains about 20 drops.

1500mg/30ml bottle has 2.5mg of CBD per drop or 50mg/1milliliter.

Questions?

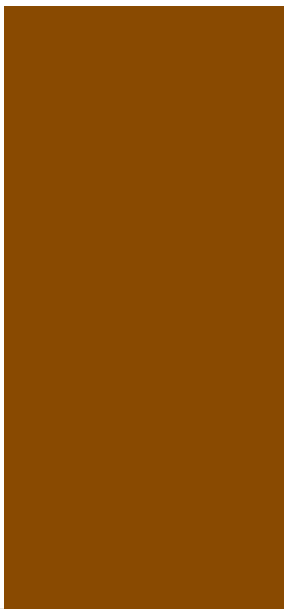
Visit our website at www.CedarMeadow.Farm or call 717-723-3770

Better Soil. Better Oil.[™]

Note: These recommendations are estimations and are not to be considered medical advice. The results displayed are based on our own personal objective data and should be treated as a 3rd party opinion. As many factors can influence hemp extract dosage for each individual, the results from this calculator may not be accurate for you. Please consult your doctor or medical professional before using CBD.

Statements regarding these products have not been evaluated by the Food and Drug Administration. These products are not intended to diagnose, treat, cure or prevent any disease. Results from products may vary.

Body Weight	Mild Dose (Start here)	Moderate Dose	High Dose
100 lbs	4-8 drops	8-20 drops	20-24 drops
110 lbs	4-9 drops	9-22 drops	22-26 drops
120 lbs	5-10 drops	10-24 drops	24-29 drops
130 lbs	5-10 drops	11-26 drops	26-31 drops
140 lbs	6-11 drops	12-28 drops	28-34 drops
150 lbs	6-12 drops	12-30 drops	30-36 drops
160 lbs	6-13 drops	13-32 drops	32-38 drops
170 lbs	7-14 drops	14-34 drops	34-41 drops
180 lbs	7-14 drops	15-36 drops	36-43 drops
190 lbs	8-15 drops	16-38 drops	38-46 drops
200 lbs	8-16 drops	16-40 drops	40-48 drops
210 lbs	8-17 drops	17-42 drops	42-50 drops
220 lbs	9-18 drops	18-44 drops	44-53 drops
230 lbs	9-18 drops	19-46 drops	46-55 drops
240 lbs	10-19 drops	20-48 drops	48-58 drops
250 lbs	10-20 drops	20-50 drops	50-60 drops
260 lbs	12-21 drops	21-52 drops	52-62 drops
270 lbs	11-22 drops	22-54 drops	54-65 drops
280 lbs	11-22 drops	23-56 drops	56-67 drops
290 lbs	12-23 drops	24-58 drops	58-70 drops
300 lbs	12-24 drops	24-60 drops	60-72 drops



Our Soil





The roots of our story are dug deeply into the rich topic of soil health.

Our soil hasn't been tilled in over two decades, and the foundation of our farming has revolved around innovating, training and advocating in the area of cover crops and no-till since 1982.

Attached are a few of our favorite third-party reports to verify the continued (and increasing) health of our soil, as well as comparisons to other popular farming methods in use today.

Learn more about our soil at CedarMeadow.Farm

Photo: Lisa Blazure,
PA Soil Health Coalition



Pennsylvania Association
for Sustainable Agriculture

PASA independently analyzes
and assess the soil on dozens of
Pennsylvania farms each year
across various farming methods
and soil health practices.

**Following are the results from
our soil over the last 3 years,
including the 2020 results which
even compares our regenerative
farm to organic farms.**

WE'RE GROWING HEALTHY SOIL. HERE'S PROOF.

We're participating in a research project that is measuring soil health on farms in our region. By closely monitoring the health of our soil over time, we're learning how we can continuously improve our farming methods to leave our land better than we found it.

Take a look at our farm's latest results.

SOIL HEALTH SCORE

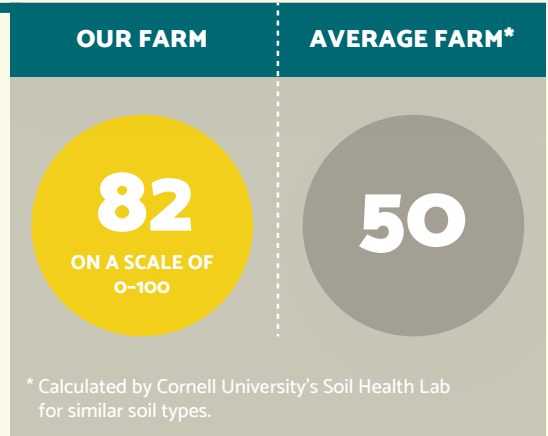
Compiling results from decades of research, Cornell University's Soil Health Lab developed a soil health rating scale. The scale measures a comprehensive array of chemical, physical, and biological features that indicate how healthy a soil is.



Healthy soil feeds nutrients to plants naturally, reducing the need for fertilizers.



It also fosters a thriving community of beneficial organisms that naturally defend crops from pests and diseases.



ORGANIC MATTER LEVEL

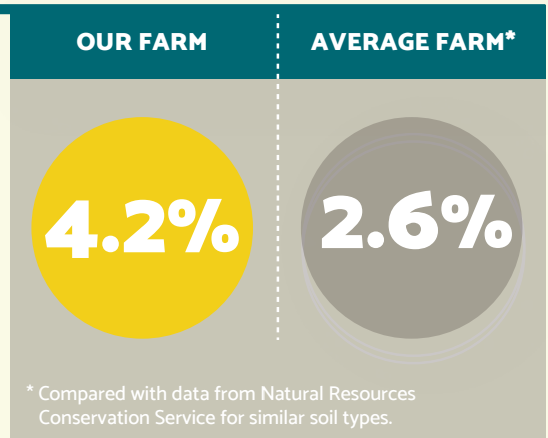
Organic matter is formed when plant debris and animal manure decay over time. Small increases in organic matter have significant implications for improving soil health.



Organic matter rapidly absorbs water during heavy rains, and slowly releases water during dry spells, helping crops withstand damage from severe weather.



And it helps mitigate climate change by securely storing carbon in the soil.



DAYS OF LIVING COVER

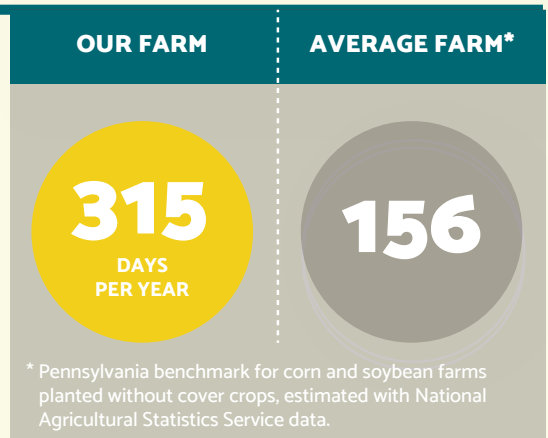
Days of living cover refers to the number of days farmers keep live plants growing in their fields – or, in other words, the number of days fields are not left bare.



Keeping fields in living cover protects nutrient-rich topsoil we rely on for our food from erosion.



Also, living cover keeps waterways and drinking water clean by helping fields better absorb and filter stormwater.



WE'RE GROWING HEALTHY SOIL. HERE'S PROOF.

We're participating in a research project that is measuring soil health on farms in our region. By closely monitoring the health of our soil over time, we're learning how we can continuously improve our farming methods to leave our land better than we found it.

Take a look at our farm's latest results.

SOIL HEALTH SCORE

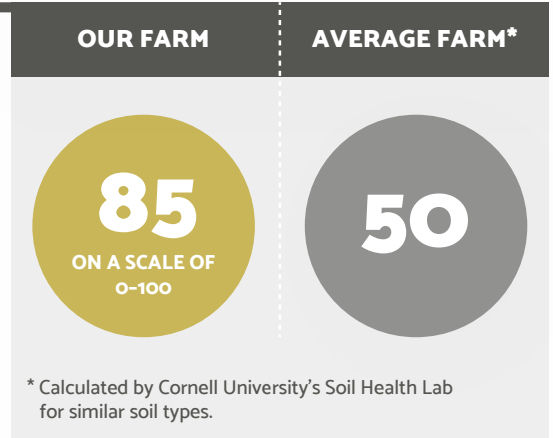
Compiling results from decades of research, Cornell University's Soil Health Lab developed a soil health rating scale. The scale measures a comprehensive array of chemical, physical, and biological features that indicate how healthy a soil is.



Healthy soil feeds nutrients to plants naturally and makes our food more nutritious.



It also fosters a thriving community of beneficial organisms that naturally defend crops from pests and diseases.



ORGANIC MATTER LEVEL

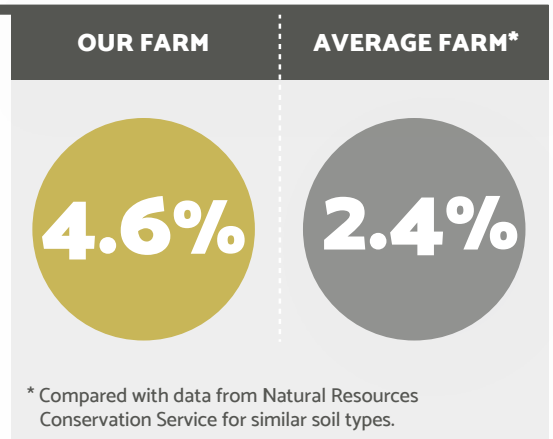
Organic matter is formed when plant debris and animal manure decay over time. Small increases in organic matter have significant implications for improving soil health.



Organic matter rapidly absorbs water during heavy rains, and slowly releases water during dry spells, helping crops withstand damage from severe weather.



And it helps mitigate climate change by securely storing carbon in the soil.



DAYS OF LIVING COVER

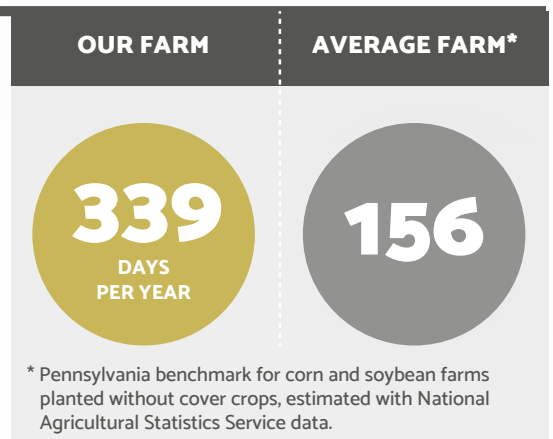
Days of living cover refers to the number of days farmers keep live plants growing in their fields – or, in other words, the number of days fields are not left bare.



Keeping fields in living cover protects nutrient-rich topsoil we rely on for our food from erosion.



Also, living cover keeps waterways and drinking water clean by helping fields better absorb and filter stormwater.



WE'RE GROWING HEALTHY SOIL. HERE'S PROOF.

We're participating in a research project that is measuring soil health on farms in our region. By closely monitoring the health of our soil over time, we're learning how we can continuously improve our farming methods to leave our land better than we found it.

Take a look at our farm's latest results.

SOIL HEALTH SCORE

Compiling results from decades of research, Cornell University's Soil Health Lab developed a soil health rating scale. The scale measures a comprehensive array of chemical, physical, and biological features that indicate how healthy a soil is.



Healthy soil feeds nutrients to plants naturally and makes our food more nutritious.



It also fosters a thriving community of beneficial organisms that naturally defend crops from pests and diseases.

OUR FARM

AVERAGE FARM*

83

ON A SCALE OF 0-100

50

* Calculated by Cornell University's Soil Health Lab for similar soil types.

ORGANIC MATTER LEVEL

Organic matter is formed when plant debris and animal manure decay over time. Small increases in organic matter have significant implications for improving soil health.



Organic matter rapidly absorbs water during heavy rains, and slowly releases water during dry spells, helping crops withstand damage from severe weather.



And it helps mitigate climate change by securely storing carbon in the soil.

OUR FARM

AVERAGE FARM*

4.5%

2.4%

* Compared with data from Natural Resources Conservation Service for similar soil types.

DAYS OF LIVING COVER

Days of living cover refers to the number of days farmers keep live plants growing in their fields – or, in other words, the number of days fields are not left bare.



Keeping fields in living cover protects nutrient-rich topsoil we rely on for our food from erosion.



Also, living cover keeps waterways and drinking water clean by helping fields better absorb and filter stormwater.

OUR FARM

AVERAGE FARM*

345

DAYS PER YEAR

156

* Pennsylvania benchmark for corn and soybean farms planted without cover crops, estimated with National Agricultural Statistics Service data.

Cedar Meadow Farm compared to 49 vegetable farms in PA

46 (94%) studied were organic farms. These are some of the "Best of the Best" farms in PA.

Soil Health Indicators	49 PA Farms Average	CMF Average (3 Fields)	Difference	What It Is & Why It's Important
Available Water Capacity Score	92	91	-1%	Soils with greater available water capacity allow plants to perform better under drought conditions.
Organic Matter	2.4%	4.6%	48%	The foundation of soil life, which contributes to the formation of stable soil aggregates, helps to improve available water capacity and provides a slow-release supply of nutrients.
Aggregate Stability	27.2%	39.8%	46%	A measure of the extent to which soil structure can hold up to wind, rain, and other stresses, reducing run-off.
Soil Protein Index	6.8	7.7	13%	The amount of protein contained in soil organic matter.
Respiration Index	0.6	0.8	33%	The abundance and activity of microbial life in the soil.
Active Carbon (ppm)	714	688	-3%	The small portion of soil organic matter that can serve as an easily available food source for soil microbes.
Living Cover Days	220	339	54%	Number of days per year that living plants (both cash crops and cover crops) are growing.
Days with Cover Crops	118	186	58%	Number of days per year that cover crops are growing.
Tillage Index	84.9	4.7	-94%	A soil disturbance score to all farm operations that can compact or disturb soil.
Overall Soil Health Score	76	84	11%	A value placed on all of the above parameters.



But, wait...Is your farm ORGANIC?

We believe that our practices produce "beyond organic" results.

Here's why...

"Organic" is one of the most popular (and misunderstood) marketing campaigns in recent history.

The label "organic" refers mostly to a set of rules for how farming is done based on using *natural* pest controls vs. *man-made* controls. It's a *process* standard vs. a *quality* standard. Actions vs. results.

We use only few organic-approved fungicides and very minimal herbicides necessarily on some crops, which puts us out of the technical reach of the "organic" label. *(See the expanded chart on the next page.)*

But we excel where most organic farms fall dismally short ... the organic matter in the soil.

And that is where true nutrition really comes from.

Unfortunately ... *the vast majority of organic farms use tillage*, which stirs the soil, allowing CO₂ to escape and destroys true organic matter & nutrient density.

So, if there's no organic matter *in the soil*, how much better can "organic" produce actually be?

We urge consumers to examine what really matters when it comes to "organic."

See the next page for more details!...

ORGANIC VS CEDAR MEADOW FARM

The popular label of “organic” has exploded into a 50 billion dollar industry.¹ Shoppers who tend to buy organic care deeply about the growth practices & production methods of what they consume. However, we continue to encounter a great deal of consumer misunderstanding about what “organic” actually means.

At Cedar Meadow Farm, we believe that soil health matters – and more than most people realize. Starting with healthy, nutrient-rich soil is the foundation for all exceptional crops, produce & the products produced from them.

Our agricultural practices reflect what we call “Beyond Organic,” and we’re passionate about helping our customers understand the realities behind the products that they buy.

FARM DESCRIPTIONS:

1. These farms typically use synthetic fertilizers, pesticides, and plastic mulch (long ribbons of plastic covering over soil primarily for weed control).
2. “Certified Organic Farms” that use government-mandated organic standards & methods (which are not necessarily driven by soil health practices).
3. Farms that are organic, but focus more on soil health by using more cover crops, less tillage, and intentionally adding diversity of plant species.
4. Our research-based regenerative farm that is 100% no-till and 100% use of cover crops and diversity of species since 1995.

CBD HEMP PRODUCTION METHOD AND PRODUCT INFLUENCES	– 1 – AVERAGE CONVENTIONAL FARM	– 2 – AVERAGE ORGANIC FARM	– 3 – AVERAGE REGENERATIVE ORGANIC FARM	– 4 – CEDAR MEADOW FARM	WHY IT'S IMPORTANT
Heavy Tillage	Frequently	Frequently	Sometimes	Never	Plowing. Completely inverting the soil. Used to break up compacted soil and to control weeds. It is not natural, kills earthworms and disrupts the function of the micro organisms. Tillage also releases carbon into the atmosphere as CO2 gas.
Medium Tillage	Always	Frequently	Sometimes	Never	Disking or harrowing. Leveling the soil and/or getting it ready for laying plastic and making raised beds.
Light Tillage	Always	Always	Sometimes	Never	Cultivating after the hemp is planted to kill weeds.
Insecticides	Sometimes	Never	Never	Never	Kills insect pests. Modern synthetic insecticides are now more narrow in scope in what they impact but they still kill some beneficial insects beyond the targeted insect pest.
Organic-approved insecticides	Rarely	Sometimes	Sometimes	Rarely	Kills insect pests using natural products. Tends to be narrow in scope in what they impact but does kill some non-target beneficial insects.
Herbicides	Sometimes	Never	Never	Sometimes	Kills weeds. May have detrimental effects on soil life.
Organic-approved herbicides	Never	Sometimes	Sometimes	Never	There are about a dozen organic herbicides on the market. Most are friendly to soil life but aren't very effective.
Fungicides	Sometimes	Never	Never	Never	Fungicides control fungal diseases. Recent formulations have been more targeted to specific diseases.
Organic-approved fungicides	Never	Sometimes	Sometimes	Sometimes	Some very effective organic fungicides have become available in the past few years.
Cover Crops	Rarely	Sometimes	Frequently	Always	Cover crops are non cash crop plants that “cover” the soil, protecting it from erosion and allowing soil life to flourish.

CBD HEMP PRODUCTION METHOD AND PRODUCT INFLUENCES	— 1 — AVERAGE CONVENTIONAL FARM	— 2 — AVERAGE ORGANIC FARM	— 3 — AVERAGE REGENERATIVE ORGANIC FARM	— 4 — CEDAR MEADOW FARM	WHY IT'S IMPORTANT
Living roots in the soil 95% of the year	Never	Rarely	Sometimes	Always	Soil was designed to function with living roots all year around and is always expressed in nature.
Diversity of species	Sometimes	Sometimes	Frequently	Always	Diversity of species, both cash crops and cover crops, are always found in nature.
Use of plastic mulch and need for disposal	Always	Always	Frequently	Never	Plastic is used primarily to warm soil and control weeds. But it can over-heat the soil before hemp plants canopy, harming soil life. It's also creates a disposal problem.
Living cover between hemp rows	Never	Rarely	Frequently	Always	Having low growing or mowed cover crops between the rows of hemp keeps the soil in place and helps with weed control.
Use of flowering plants to attract beneficial insects	Never	Sometimes	Frequently	Always	Using flowering species to attract insects that prey on insect pests.
Use of GMO's	NA	NA	NA	NA	Currently, there is no GMO hemp.
Use of Glyphosate	Frequently	Never	Never	Rarely	Glyphosate is the chemical in the herbicide <i>Roundup</i> . It is our opinion that glyphosate has been over-used and has caused detrimental effects on the soil ecology. Consider this analogy: Even electric cars use fossil fuels to generate power, but in a reduced amount than gasoline cars. Similarly, a judicious use of glyphosate to control weeds is still less damaging to the soil than tillage.
Fuel use	High	High	Medium	Very Low	Tillage requires high fuel usage.
Erosion potential	Very High	High	Low	Very Low	Tillage exposes soil to erosion.
Soil-building potential	Low	Medium	High	Very High	Reducing tillage and increasing the use of cover crops helps improve organic matter.
Carbon Capture	Very Low	Low	Medium	Very High	Cover crops capture CO2 and sequesters it in the soil as carbon, whereas tillage releases carbon into the atmosphere as CO2.
Potential positive impact on hemp extract quality	Low	Medium	High	Very High	Healthy soil = Healthy food = Healthy people. (Just read my book, "The Future Proof Farm, Changing Mindsets in a Changing World.")
Long-term history of soil health practices	Very Low	Medium	Medium	Very High	Developing healthy soil is a long-term strategy & commitment. Cedar Meadow Farm started soil health practices in 1982.



Cedar Meadow Farm has consistently been independently evaluated and ranked by the Pennsylvania Association for Sustainable Agriculture (PASA) Soil Health Benchmark Study as *exceptionally above average* for soil health ratings even when compared to other organic and regenerative farms. Learn more on our Soil Health FAQ at www.CedarMeadow.Farm

STEVE GROFF'S
cedar meadow.farm
 Better Soil. Better Oil.™





More Great News & Cool Stories

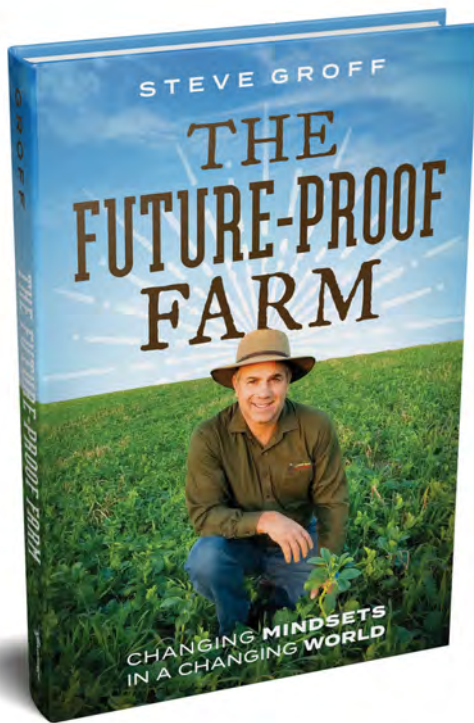


HOW MUCH DOES HEALTHY SOIL MATTER?

You make careful choices about the food and health products that you buy.
But have you ever thought about how they're grown?

Local farmer & author Steve Groff's new book is a stark wake-up call, fanning the flames of nutrient-dense growing practices for farmers & consumers alike.

The future of America's farms . . . and the food on your family's table . . . is at a crossroad.



Foreword by Roian Atwood
Senior Director of Sustainability

Wrangler



“Steve is truly a pioneer who has weathered a lot of storms and has come out strong. He has helped build my confidence to be a leader in the promotion of Soil Health.”

— Jim Hershey - Pennsylvania Farmer and President of the Pennsylvania No-Till Alliance

“Farming in nature's image is a skilled art and mastery which few embrace or understand. Steve is an artisan of ecological life. Read Steve's Journey & learn from his collective and well-traveled wisdom on how Regenerative Agriculture can transform and heal our earth.”

— Ray Archuleta, Missouri Farmer and Regenerative Agriculture Advocate

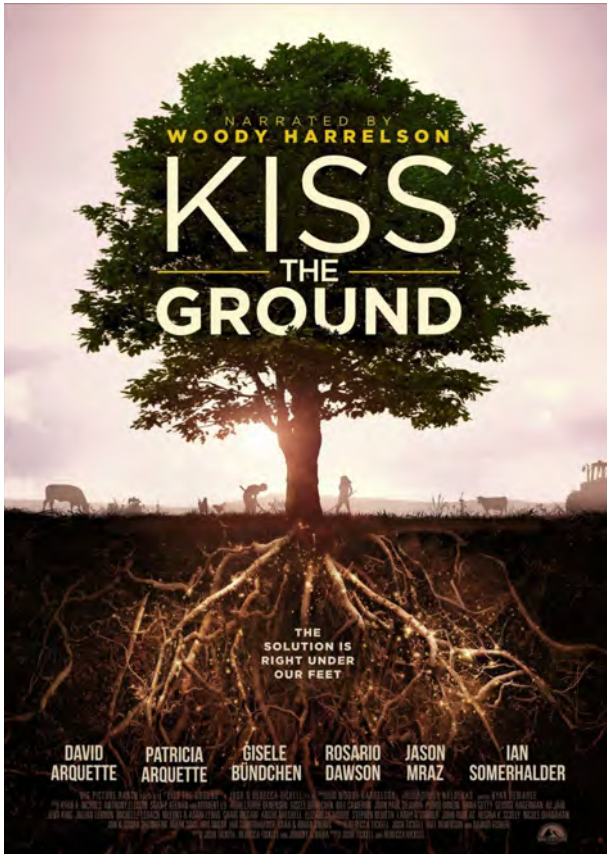
ORDER YOUR COPY AT

WWW STEVE GROFF'S
cedar meadow.farm



Watch a 1:30 interview
with author Steve Groff

NETFLIX



The Story of Soil Health ... *Gaining Traction.*

The story of soil health and regenerative ag and soil health has been largely relegated to the farming and conservation niche industries.

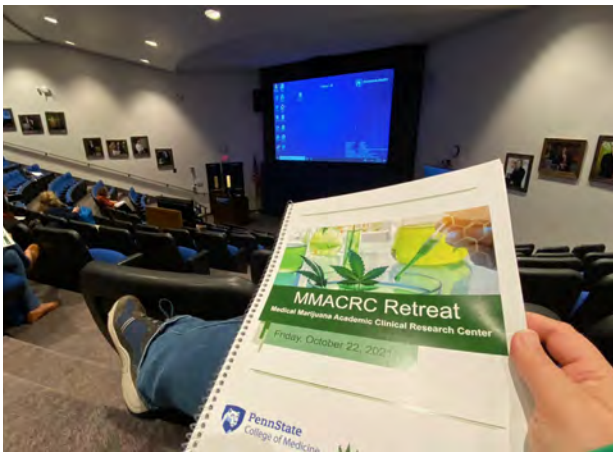
This exceptionally-produced 2020 documentary on Netflix brings this story to the mainstream.

Narrated by Woody Harrelson and featuring many of our friends, contacts & legislators who are invested in this important discussion, the presentation paints a clear and compelling picture about the why it's critical to protect and enrich our earth's most foundational resource.

“Penn State College of Medicine and PA Options for Wellness will work together to investigate the potential benefits and risks of using marijuana extracts to treat a variety of health issues.

The research program is designed to help physicians and patients make better informed clinical decisions related to cannabinoids.”

BREAKING NEWS



One of the significant hurdles to CBD products has been the lack of true medical research.

There are pockets of that underway now, including some incredible work being done by teams at the Penn State College of Medicine in Hershey.

We are honored to be connected to this group and invited to attend their first-ever retreat on Oct 22, 2021, hearing scientific reports of how CBD and CBG are impacting illnesses and diseases.

Our oil being studied for it's specific efficacy against major diseases, and the early results are very exciting and promising!

Great work like this is paving the way for great things to come... stay tuned!





RegenAll is a non-profit local to Lancaster exploring climate solutions through regenerative activities.

They hosted the area’s first-ever TEDx talk on October 12, 2021 with a host of speakers across various industries.

Steve Groff was invited to present insights about how regenerative agriculture and cover cropping can have an massive impact on climate change.

This powerful network spotlights Lancaster, PA and the significant impact that can be made in this dynamic geographic area, particularly with the strong concentration of farming activities.

Watch Steve’s talk on our Facebook page: CedarMeadowdotFarm

5:30 - 5:55	Registration
6:00 - 6:15	Why Lancaster? Eric Saudel
Natural Systems	
6:15 - 6:25	Water Allyson Gibson & Jenna Beckett
6:25 - 6:35	Land Phil Wenger
Food & Agriculture	
6:40 - 6:50	Food Hawa Lassanah
6:50 - 7:00	Agriculture Steve Groff
Built Environment	
7:05 - 7:15	Energy Marcus Scheffer
7:15 - 7:25	Architecture Max Zahniser
7:25 - 7:35	Transportation Michael Jennings
7:35 - 7:55 Intermission	
Economy & Community	
8:00 - 8:10	Cities Jess King
8:10 - 8:20	Business Samantha Veide
8:20 - 8:30	Refugees Matt Johnson
8:30 - 8:40	Community Health Alice Yoder
8:40 - 8:50	Equity Kevin Ressler
Printed on recycled paper	





ONE-OF-A-KIND HEMP MAZE

SEPTEMBER & OCTOBER 2021

- 4 Acres of Fiber Hemp
- 7-12' maze for bigger kids & adults, 3-7' maze for smaller kids
- Fun "Grizbot" design, the online persona of Grizzly the farm dog!



PLUS

- Pick-Your-Own Pumpkins, Winter Squash, Gourds & Sunflowers.
- Music & Theme Weekends.
- Learn about hemp, produce and regenerative agriculture on our nutrient-rich cover cropped farm.



STEVE GROFF'S
CEDAR MEADOW
Adventures

CedarMeadowAdventures.com

535 Drytown Road, Holtwood, PA 17532

 Cedar Meadow Adventures

Part of Steve Groff's Cedar Meadow Farm (www.CedarMeadow.Farm)

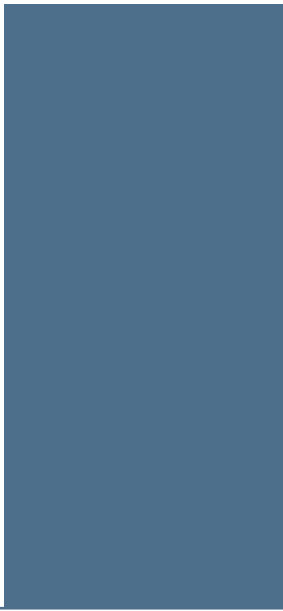
And so much more!

We've been so active lately that it's tough to keep up . . .
even in a 3-ring binder!

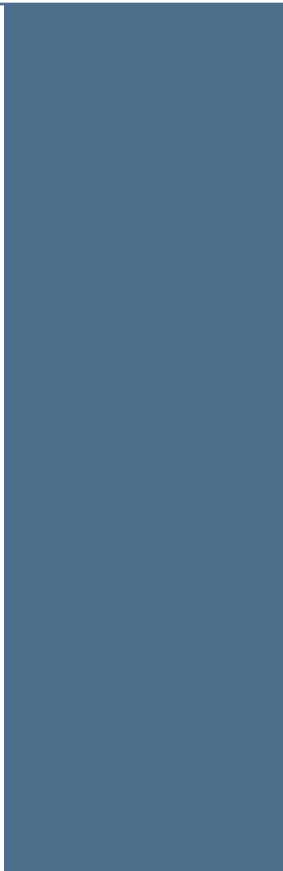
Follow us on Facebook to see all the latest news.



[facebook.com/cedarMeadow dot farm](https://facebook.com/cedar Meadow dot farm)



Wholesale Pricing Guide



THANK YOU
for your time in reviewing this packet!

We look forward to working with you.

This packet is yours to keep to help you tell
our brand story and answer your customer's
initial questions.

*(If this doesn't feel like the right opportunity
right now, please let us know so that we can
retrieve the binder and pass it along
to our next partner.)*

Call any time with questions.
[info@cedarMeadow.farm](mailto:info@cedar Meadow.farm)

