



California Faucets®

Large Format Designer Showerhead

22" x 16" ARCHED RAIN SHOWERHEAD

SH-2216C.25

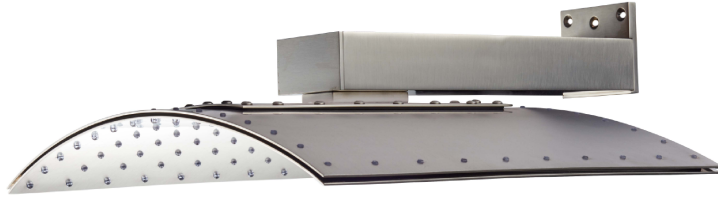
Features

- Integral arm bracket with 1/2" FIP quick connect
- Brass construction
- Self-cleaning rubber jets
- 22" wide x 16" long brass body
- SH-2216C.25 for 2.5 gpm
- Over 28 finishes including 13 PVD finishes

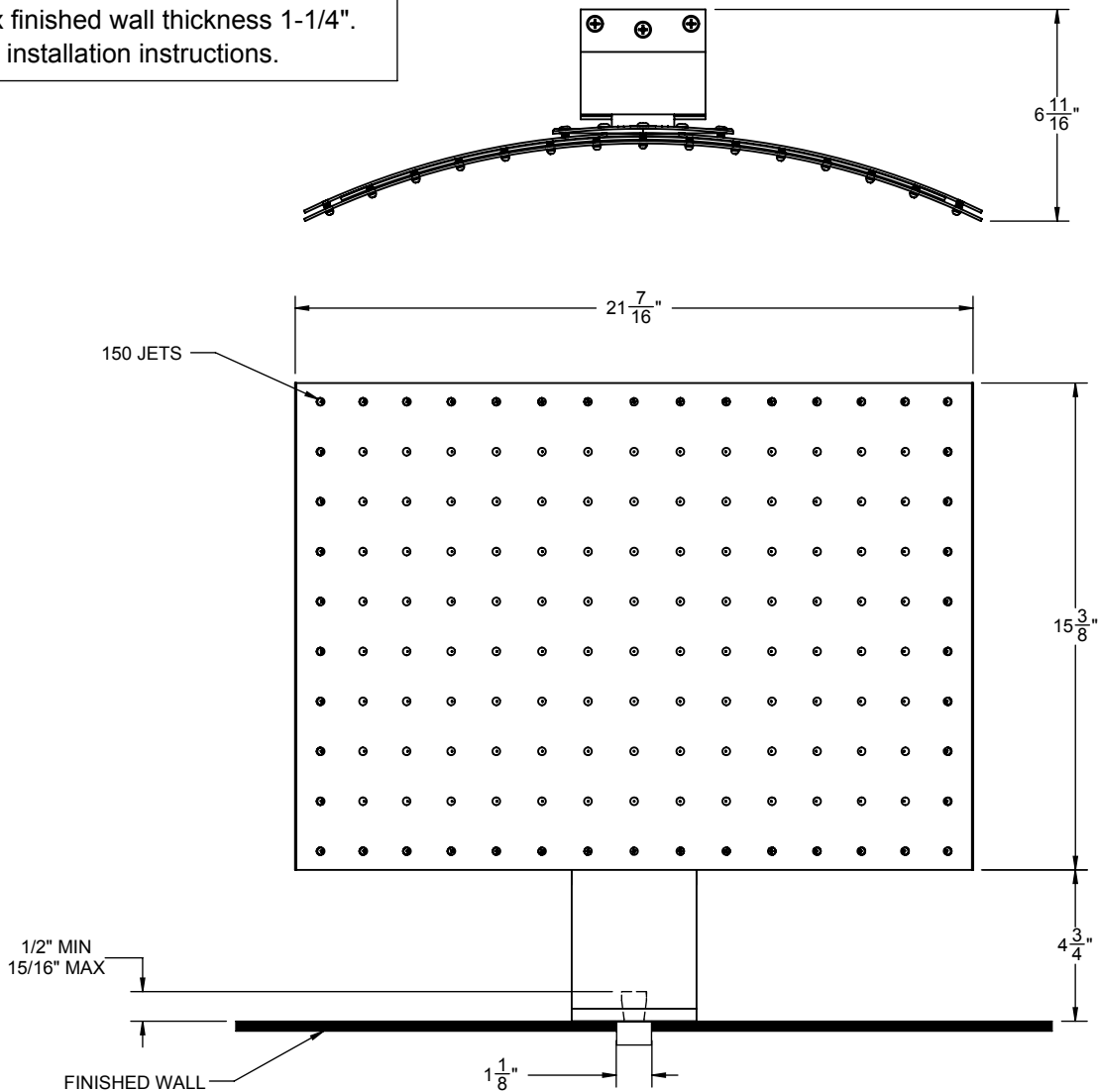
Codes/Standards Applicable

Product meets or exceeds the following:

- ASME A112.18.1/CSA B125.1
- DOE (2.5 gpm)
- Commonwealth of MA



Note: Requires appropriate in wall support.
Max finished wall thickness 1-1/4".
See installation instructions.



THROUGH-HOLE SPECIFICATIONS

	RECOMMENDED	MAX
QUICK CONNECT:	Ø 1-1/8"	Ø 1-1/8"

SPECIFICATIONS SUBJECT TO CHANGE WITHOUT NOTICE

ALL DIMENSIONS SHOWN TO NEAREST 1/16"