

**LAYER SBR** Dual level workstation | 0 Radius Corners (square) | fits 600 deep benchtop



**SBR50** W 540 x D 510 x H 210 Cabinet size: 600mm  
**SBR70** W 740 x D 450 X H 210mm Cabinet size: 800mm  
**SBR74** W780 x D 450 x H 210 mm Cabinet size: 900mm  
**SBR104** W 1080 x D 450 x H 210 mm Cabinet size: 1100mm



**SBR50PK** Accessories Included: TSBR4030  
**SBR70PK** Accessories Included: TSBR4030 | VFGSBR19  
**SBR74PK** Accessories Included: TSBR4030 | VFGSBR19  
**SBR104PK** Accessories Included: TSBR4030 | VFGSBR34 | VGSBR3F

**LAYER BRP** Dual level workstation | 0 Radius Corners (square) | Tap hole plate at the back | Fits 600 deep benchtop

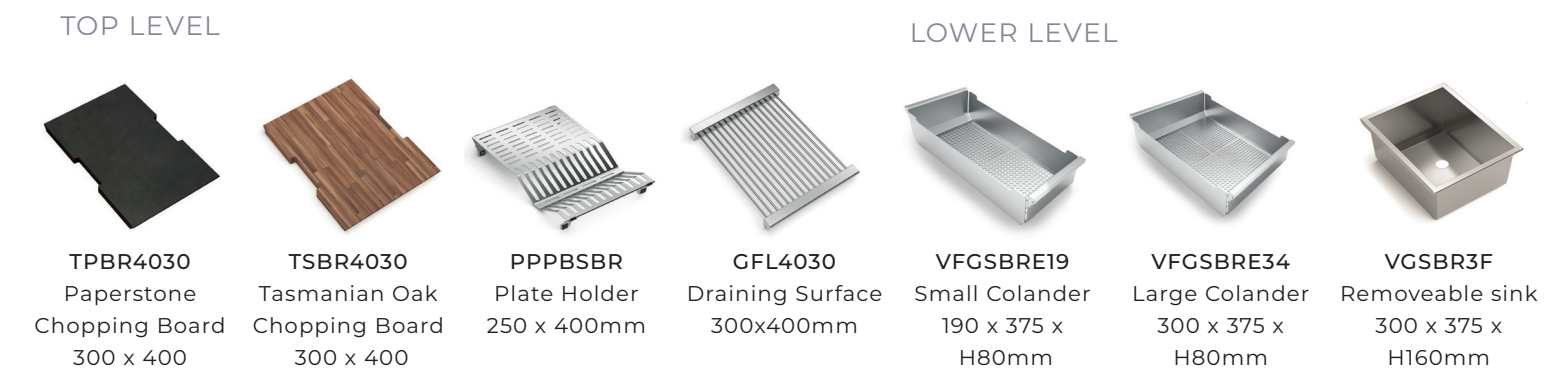


**BRP50** W540 x D 510 x H 210 Cabinet size: 600mm  
**BRP74** W 780 x D 510 x H 210 mm Cabinet size: 800mm  
**BRP81** W 860 x D 510 x H 210 mm Cabinet size: 900mm  
**BRP104** W1080 x D 510 x H 210 mm Cabinet size: 1100mm



**BRP50PK** Accessories Included: TSBR4030  
**BRP74PK** Accessories Included: TSBR4030 | VFGSBR19  
**BRP81PK** Accessories Included: TSBR4030 | VFGSBR19  
**BRP104PK** Accessories Included: TSBR4030 | VFGSBR34 | VGSBR3F

**LAYER ACCESSORIES**



**TPBR4030** Paperstone Chopping Board 300 x 400  
**TSBR4030** Tasmanian Oak Chopping Board 300 x 400  
**PPPBSBR** Plate Holder 250 x 400mm  
**GFL4030** Draining Surface 300x400mm  
**VFGSBR19** Small Colander 190 x 375 x H80mm  
**VFGSBR34** Large Colander 300 x 375 x H80mm  
**VGSBR3F** Removeable sink 300 x 375 x H160mm

# DETAILS THAT MAKE THE DIFFERENCE

**DEDICATED ACCESSORIES**

The stainless steel accessories are microwelded and dishwasher safe. The chopping boards are made of wood or non-toxic polyethylene.

**STAINLESS STEEL THICKNESS**

We use AISI 304 stainless steel of increased thickness compared to the normal market standards, guaranteeing robust products with a unique design.

**WELDED PRODUCTS**

Artinox only manufactures sinks using a laser welding process. This produces stronger, better quality products.

**GENEROUS SIZES**

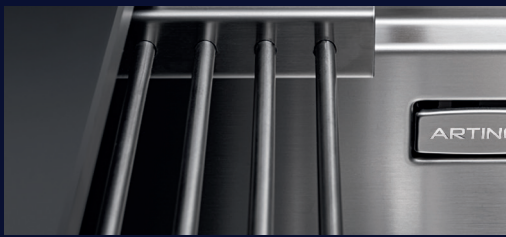
Sinks are available in various sizes from 170 to 250 depth. The large capacity increases functionality.

**OVERFLOW SYSTEM**

All products have an integrated back wall overflow and are designed without joints to ensure maximum hygiene.

**DRAINAGE ENHANCED BOTTOMS**

The outflow of the water is guaranteed due to our diamond-finished basin bottoms.



# ARTINOX

MADE IN ITALY



**QUALITY & SUSTAINABILITY**

Artinox Sinks Australia is Australian owned and operated based on the Northern Beaches, Sydney. All Artinox stainless steel products are made in Conegliano, Italy. Our products not only meet but exceed industry standards. We are committed to sustainability and our stainless steel comprises over 70% recycled materials (unalterable over time), with the added advantage of being 100% recyclable. All of our timber products are handmade by Nigretta of Hamilton in Victoria using Australian Hardwood (Tasmanian Oak)

Range	Overflow	Depth (mm)	Corner radius	Accessories	MOUNTING OPTIONS				
					under	over	flush	integrated	edgeless
Radius	✓	200	R 10	single level	✓	✓	✓		
Radius XL	✓	250	R 10	single level	✓	✓	✓		
Ghost	✓	210	R 10	single level		✓	✓		
Linea	✓	200	R 10	single level					✓
Shore		200	R 0	single level				✓	
WORKSTATIONS									
Layer	✓	210	R 0	dual level	✓(SBR)	✓	✓		
Planum	✓	254	R 10	dual level	✓	✓	✓		



**ARTINOX**  
 ARTINOXSINKS.COM.AU  
 INFO@ARTINOXSINKS.COM.AU  
 0404 716 083 | 0418 354 260

Winning appliances

Winning appliances

Design: Soul Home Photography: The palm Co.

**RADIUS** Extensive size range of sizes | 10mm internal radius for easy cleaning | Suitable for kitchen/ laund/ bar | 200/250mm Deep

Our timber products are all handmade and will vary in colour and grain.

\*\*All sinks are available in 316 stainless steel on request



**ARTRAD1840**  
Bowl: 180x400x200  
W220 x D440 x H200  
Cabinet size: 300mm



**ARTRAD3440**  
Bowl: 340x400x200  
W380 x D440 x H200  
Cabinet size: 400mm



**ARTRAD4040**  
Bowl: 400x400x200  
W 440 x D 440 x H 200



**ARTRAD5040 / ARTRAD5040XL**  
Bowl: 500x400x200 / 250 (XL)  
W 540 x D 440 x H 200/250  
Cabinet size: 600mm



**ARTRAD7440 / ARTRAD7440XL**  
Bowl: 740x400x 200/ 250 (XL)  
W780 x D 440 x H 200/ 250  
Cabinet size: 800mm



**ARTRAD2V90**  
Bowl: 340x400/ 400x400  
W805 x D 440x H200  
Cabinet size: 900mm



**ARTRMOS034**  
Bowl: 500x400/ 340x400  
W910 x D 440x H 200  
Cabinet size: 950mm

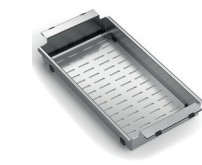
**GHOST**



**SCG60MP**  
W480 x D 440x H210mm  
Cabinet size: 600mm  
Tap and cover included



**COLANDERS**



**VQSF2142**  
Small Colander  
180x420xh60mm



**VQSF2842**  
Large Colander  
260x420xh60mm



**VQSI2842**  
Slanted Colander  
280 x 420 x H110/60mm

**WASHING**



**VQSP284F**  
Removeable Sink  
280 x 420 x H160mm



**ARTRAD3440PK**  
Accessories Included:  
VQSF2142



**ARTRAD4040PK**  
Accessories Included:  
VQSF2142



**ARTRAD5040PK**  
Accessories Included:  
VQSF2142



**ARTRAD7440PK**  
Accessories Included:  
VQSF2142 | TRIB3042



**ARTRAD2V90PK**  
Accessories Included:  
VQSF2142 | TRIB3042



**ARTRMOS034PK**  
Accessories Included:  
VQSF2142 | TRIB3042



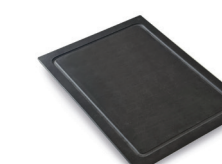
**PPL2517**  
Plate Holder insert  
(suits VQSF2842)  
180 x 240mm



**PPPP28SB**  
Plate Holder  
280 x 420mm



**VQSI3442R**  
Side Drainer  
340 x 420mm



**TRPS3042**  
Paperstone Chopping Board  
300 x 420mm



**TRIB3042**  
Tas Oak Chopping Board  
300 x 420mm



**TRP2442**  
HDPE Chopping Board  
240 x 420mm

**LINEA** Innovative edgeless installation with a seamless transition from sink to benchtop- set for 20mm benchtop | Radius 10mm | single level



**L34WM**  
Bowl: 340x400x H200mm  
Cabinet size: 400mm



**L40WM**  
Bowl: 400x400x H200mm  
Cabinet size: 500mm



**L50WM**  
Bowl: 500x400x H200mm  
Cabinet size: 600mm

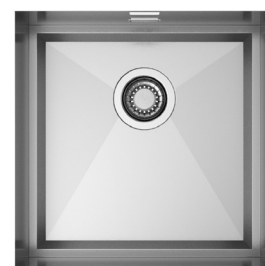


**L74WM**  
Bowl: 740x400x H200mm  
Cabinet size: 800mm

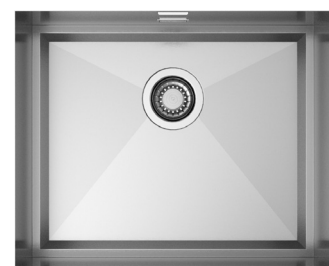
**SHORE** An innovative sink that shows only the base while your benchtop runs down to make the walls of the sink. Suits 20mm benchtop thickness



**SH34WM**  
Bowl: 340x400xH200mm  
Cabinet size: 400mm



**SH40WM**  
Bowl: 400x400xH200  
Cabinet size: 500mm



**SH50WM**  
Bowl: 500x400xH200  
Cabinet size: 600mm



**SH74WM**  
Bowl: 740x400x200  
Cabinet size: 800mm



**TI2442PG(white)**  
**TI2442GN (black)**  
Grater/ Slicer Set (3pc)  
240 x 420 x H28mm



**TRPS2442 (white)**  
**TRPS2442N (black)**  
Gastronorm (GN) Holder  
(strainer not incl)  
240 x 420 x H20mm



**GAFI3100**  
Pasta Strainer  
175 x 325 x H100mm



**ATRPGN13**  
1/3 GN tray  
175 x 325 x H100mm



**AGI61002**  
1/6 GN trays (2pack)  
176 x 162 x H100mm



**AGI91003**  
1/9 GN trays (3pack)  
176 x 108 x H100mm

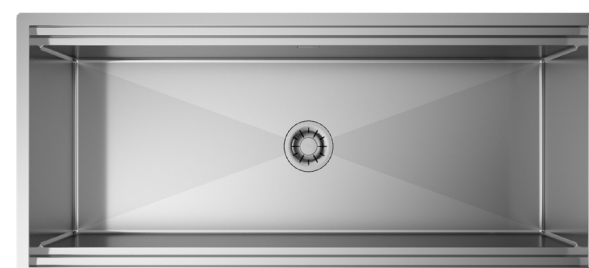
**PLANUM** Dual Level System | R10 Corners | 254mm Deep | 700 Deep benchtop required



**PI744025**  
W750 x D 510 x H254mm  
Cabinet size: 800mm  
Benchtop Depth Required: 700mm  
(sink only)



**PI814025**  
W860 x D510 x H254mm  
Cabinet size: 900mm  
Benchtop Depth Required: 700mm  
(sink only)



**PI114025**  
W1160 x D510 x H254 mm  
Cabinet size: 1200mm  
Benchtop Depth Required: 700mm  
(sink only)

**PLANUM ACCESSORY PACKS**



**PLANUM ESSENTIALS**  
ESSENTIALS ACCESSORY PACK  
VQSF2842 | PPL2517 | TRIB3045  
(accessories only- sink not incl)



**PLANUM WASH**  
WASH ACCESSORIES PACK  
VQSI2842 | VQSI3445P | VQSP284F  
(accessories only- sink not incl)

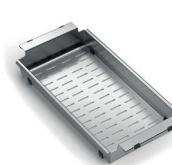


**PLANUM ENTERTAINERS**  
ENTERTAINERS ACCESSORY PACK BLACK  
TI2442GN | TRPS244N | VPB3CPA |  
GAFI3100 | ATRPGN13 | AGI61002 | AGI91003  
(accessories only- sink not incl)

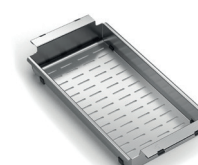


**PLANUM ENTERTAINERS**  
ENTERTAINERS ACCESSORY PACK WHITE  
TI2442PG | TRPS2442 | VPB3C  
GAFI3100 | ATRPGN13 | AGI61002 | AGI91003  
(accessories only- sink not incl.)

**COLANDERS/ WASHING**



**VQSF2142**  
Small Colander  
180 x 420 x H60mm



**VQSF2842**  
Large Colander  
260 x 420 x H60mm



**VQSI2842**  
Slanted Colander  
280 x 420 x H110/60mm

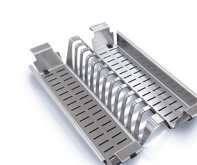


**VQSP284F**  
Removeable Sink  
280 x 420 x H160mm

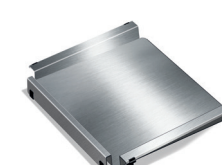
**DRYING/ PROTECTION**



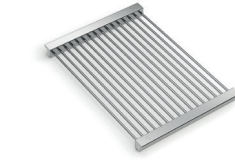
**PPL2517**  
Plate Holder insert  
(suits VQSF2842)  
180 x 240mm



**PPPP28SB**  
Plate Holder  
280 x 420mm



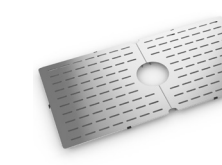
**VQSI3445P**  
Side Drainer  
340 x 450mm



**GRS3045**  
Draining Rack  
300 x 450mm



**VPB2545**  
Draining Surface  
250 x 450mm

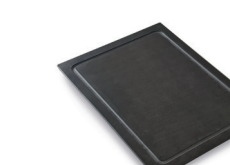


**AFDP7440 | AFDP8140**  
AFDP1140  
Bottom Protector

**CHOPPING BOARDS**



**TRIB3045**  
Tas Oak Chopping Board  
360 x 460mm



**TRPS3045**  
Paperstone Chopping Board  
300 x 460mm



**TRP3046 (white)**  
**TRP3046N(black)**  
HDPE Chopping Board  
360 x 460mm

**FOOD PREPARATION**



**VPB3CPA (Paperstone)**  
VPB3C (Tas Oak)  
Timber bottle/cutlery holders  
135 x 460mm



**TI2442PG(white)**  
**TI2442GN (black)**  
Grater/ Slicer Set (3pc)  
240 x 420mm



**GAFI3100**  
Pasta Strainer  
175 x 325 x H100mm



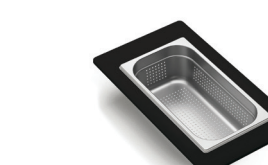
**8ATRPGN13**  
1/3 GN tray  
175 x 325 x H100mm



**AGI61002**  
1/6 GN trays (2pack)  
176 x 162 x H100mm



**AGI91003**  
1/9 GN trays (3pack)  
176 x 108 x H100mm



**TRPS2442 (white)**  
**TRPS2442N (black)**  
Gastronorm (GN) Holder  
(strainer not incl)  
240 x 420mm