

IMPORTANT SAFETY INSTRUCTIONS

- Read all instructions before installing or using this product.
- Do not allow children to play with this product.
- This product is designed for use with pets only, as described in these instructions.
- Follow safety instructions for all tools and wear appropriate personal protective equipment.
- Dispose of all packaging material properly.

Closer Pets

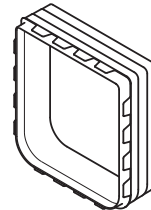
The new home of
Cat Mate Dog Mate Fish Mate

Ref. CP400W

INSTALLATION GUIDE

Wall Liner

For use with Large Cat Flap and Small Dog Door (Ref. 221)



Wall Thickness (t)	Wall Liners
51 - 99mm (2 - 4")	1
100 - 149mm (4 - 6")	2
150 - 199mm (6 - 8")	3
200 - 249mm (8 - 10")	4
250 - 299mm (10 - 12")	5



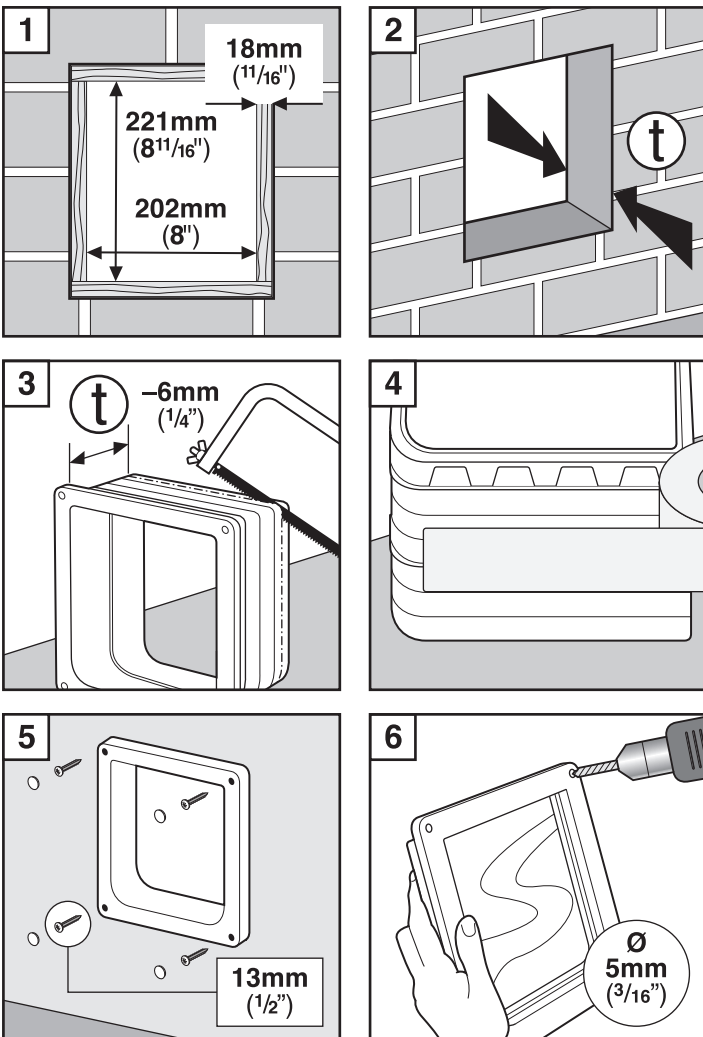
GUARANTEE

We offer a 1-year standard warranty. However, if you register your product at www.closerpets.com/pages/product-registration within 14 days of your purchase you get an additional 2-years warranty and Pet Mate Ltd. will guarantee your product for a period of 3 years from the date of purchase. If you do not have access to a computer, please send details of your purchase with a copy of the receipt along with your name and address, and our Customer Services team will handle this for you. Please get in touch with Closer Pets Customer Services if you have a problem with your purchase. The guarantee is here to protect you if any defect arises due to faulty materials or manufacture. Any defective items will be repaired or replaced free of charge by Pet Mate Ltd, provided the defect has not been caused by neglect, misuse or normal wear and tear. Your statutory rights are not affected. To get started, register now by scanning the QR code or by following the link here: www.closerpets.com/pages/product-registration

www.closerpets.com

+44 (0)1932 700 001
N America (936) 760 4333

Designed and Manufactured by Pet Mate Ltd: Lyon Road, Hersham, Surrey KT12 3PU, UK
Imported to the EU by Closer Pets BV: Newtonlaan 115, 3584 BH Utrecht, The Netherlands
Imported to North America by Ani Mate: 104A Longview Street, Conroe, TX 77301, USA

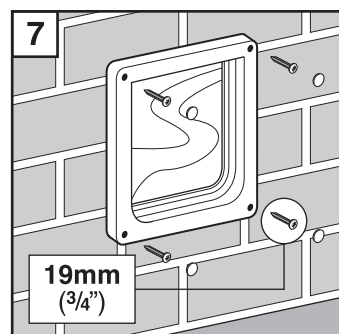


What you'll need:

- Power drill with screwdriver bit
- Drill bits (5mm ($\frac{3}{16}$ ") for plastic frame)
- Saw
- Waterproof tape
- Silicone sealant or ABS solvent adhesive

- 1 Make a suitably sized hole in wall and line it with 18mm ($\frac{11}{16}$ ") plywood or similar material to take screws. (We recommend the bottom of the hole is approximately level with your pet's stomach.)
- 2 Determine thickness of wall (t). Determine number of Wall Liners required (use the table on front page). Use an additional liner for each 50mm (2") of wall thickness.
- 3 Assemble required number of Wall Liners on internal frame and tape to secure (frame without swinging flap). Carefully cut length to wall thickness (t) less 6mm ($\frac{1}{4}$ ") using a hacksaw or plastic cutting disc. Use moulded lines as a guide to ensure a square cut. **Important:** Do not cut past the 3rd cut line.
- 4 Tape Wall Liners together, covering the joint prior to inserting. Place any cut wall liners in middle of assembly.
- 5 Attach interior frame and Wall Liners to inside of wall, using short 13mm ($\frac{1}{2}$ ") screws.
- 6 Drill out four screw holes in exterior frame to allow close clearance on screws. (Recommended drill 5mm ($\frac{3}{16}$ ") diameter.)
- 7 Position exterior frame on outside of wall and screw on using 19mm ($\frac{3}{4}$ ") screws. Finally, fit screw caps.

A helpful tip: To train your pet to use the cat flap, prop it open at first and use food as an encouragement.



IMPORTANT SAFETY INSTRUCTIONS

- Read all instructions before installing or using this product.
- Do not allow children to play with this product.
- This product is designed for use with pets only, as described in these instructions.
- Follow safety instructions for all tools and wear appropriate personal protective equipment.
- Dispose of all packaging material properly.

Closer Pets

40003/1221

The new home of

Cat Mate

Dog Mate

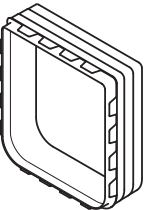
Fish Mate

Ref. CP400W

INSTALLATION GUIDE

Wall Liner

For use with Large Glass Fitting Cat Flap (Ref. 357)



Wall Thickness (t)	Wall Liners
51 - 99mm (2 - 4")	1
100 - 149mm (4 - 6")	2
150 - 199mm (6 - 8")	3
200 - 249mm (8 - 10")	4
250 - 299mm (10 - 12")	5



GUARANTEE

We offer a 1-year standard warranty. However, if you register your product at www.closerpets.com/pages/product-registration within 14 days of your purchase you get an additional 2-years warranty and Pet Mate Ltd. will guarantee your product for a period of 3 years from the date of purchase. If you do not have access to a computer, please send details of your purchase with a copy of the receipt along with your name and address, and our Customer Services team will handle this for you. Please get in touch with Closer Pets Customer Services if you have a problem with your purchase. The guarantee is here to protect you if any defect arises due to faulty materials or manufacture. Any defective items will be repaired or replaced free of charge by Pet Mate Ltd, provided the defect has not been caused by neglect, misuse or normal wear and tear. Your statutory rights are not affected. To get started, register now by scanning the QR code or by following the link here: www.closerpets.com/pages/product-registration

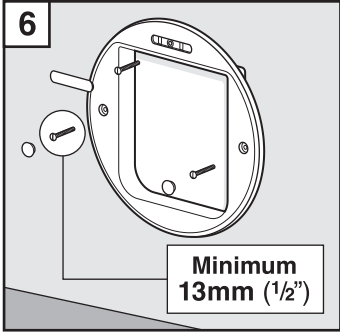
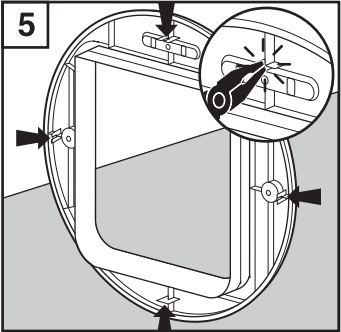
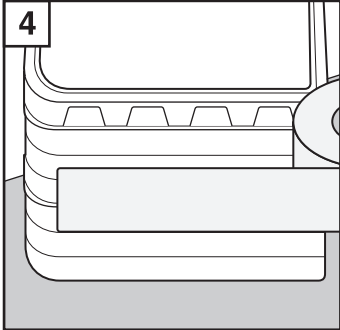
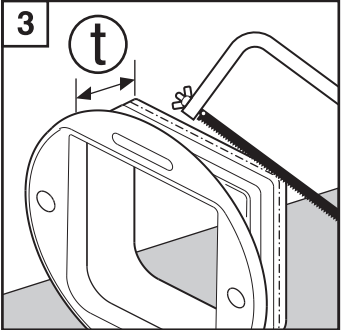
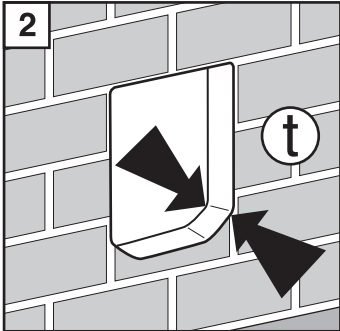
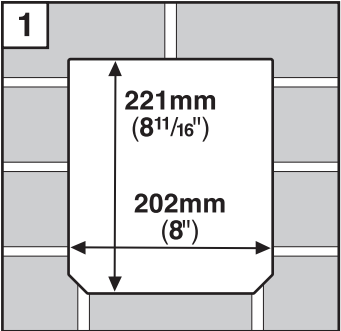


www.closerpets.com



+44 (0)1932 700 001
N America (936) 760 4333

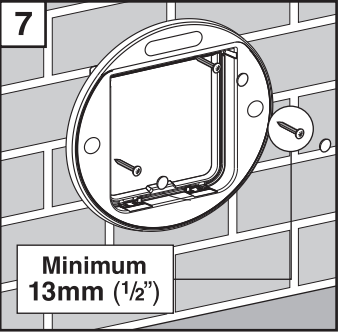
Designed and Manufactured by Pet Mate Ltd: Lyon Road, Hersham, Surrey KT12 3PU, UK
Imported to the EU by Closer Pets BV: Newtonlaan 115, 3584 BH Utrecht, The Netherlands
Imported to North America by Ani Mate: 104A Longview Street, Conroe, TX 77301, USA



What you'll need:

- Power drill with screwdriver bit
- Drill bits (5mm (3/16")) for plastic frame
- 6 x wall anchors/plugs
- 6 x minimum 13mm (1/2") screws
- Saw
- Pliers
- Waterproof tape
- Silicone sealant or ABS solvent adhesive (optional)

- 1 Make a suitably sized hole in wall. (We recommend the bottom of the hole is approximately level with your pet's stomach.)
- 2 Determine thickness of wall (t). Determine number of Wall Liners required (use the table above). Use an additional liner for each 50mm (2") of wall thickness.
- 3 Assemble required number of Wall Liners on internal frame (frame without swinging flap). Carefully cut length to wall thickness (t) using a hacksaw or plastic cutting disc. Use moulded lines as a guide to ensure a square cut. **Important:** Do not cut past the 3rd cut line.
- 4 Tape Wall Liners together, covering the joint prior to inserting. Place any cut wall liners in middle of assembly. If desired, glue Wall Liners together using silicone sealant or ABS solvent adhesive. Place glue into outer joint(s).
- 5 Snap off the four tabs using pliers or a similar tool so they are flush with the edge of the rim. **Important:** Ensure you wear safety goggles.
- 6 Attach interior frame and Wall Liners to inside of wall, using short 13mm (1/2") screws.



- 7 Position exterior frame on outside of wall and screw on using recommended screws. Finally, fit screw caps.

A helpful tip: To train your pet to use the cat flap, prop it open at first and use food as an encouragement.