

# AirCheck G2™ version 5.0 Release Notes

August 2020

AirCheck G2 v5.0 Release Notes briefly describe the New Features included in the release, along with Bug Fixes and a reference to Frequently Asked Questions (FAQs) and Knowledge Base articles online.

## Upgrading to Version 5.0

An AllyCare support contract is required to upgrade your Aircheck G2 software to version 5.0. There are two ways to upgrade your Aircheck G2 unit:

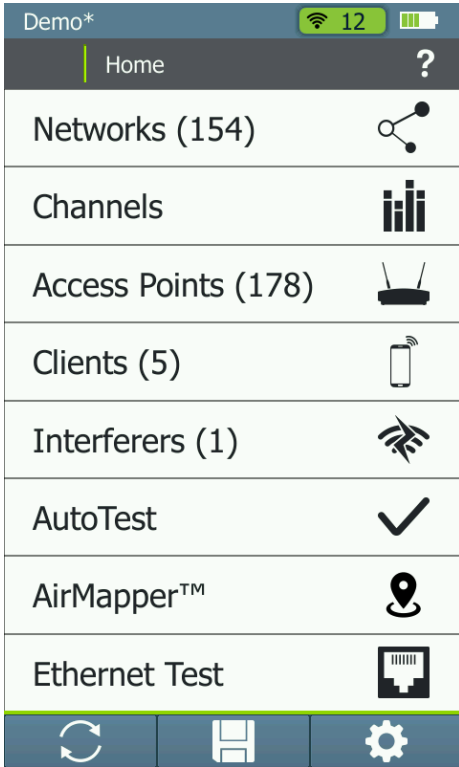
- **Over the Network (Requires firmware version 3.0.0 or above)**
  - a. Make sure your AirCheck G2 is “claimed” in Link-Live.com.
  - b. Connect your Aircheck G2 to an Ethernet port.
  - c. Press the “Settings” button on the AirCheck G2 home screen.
  - d. Select the “Link-Live” option.
  - e. Press the “Check for Software Update” button.
  - f. Follow the prompts to upgrade your unit to the v5.0 firmware.
- **AirCheck G2 Manager**
  - a. Download the AirCheck G2 Manager v3.1.485 software from the support page at NetAlly.com (<https://www.link-live.com/downloads>), and install it on a PC.
  - b. Download a copy of the AirCheck G2 v5.0 firmware (<https://www.link-live.com/downloads>), and save it on a computer where the AirCheck G2 Manager v3.1.485 is installed.
  - c. Launch the AirCheck G2 Manager v3.1.485.
  - d. Attach your AirCheck G2 unit to your computer using the USB micro cable supplied with the unit.
  - e. In AirCheck G2 Manager v3.1.485 go to the Device Info screen, select the “Update AirCheck G2 Firmware...” button.
  - f. Follow the prompts to upgrade your unit to the v5.0 firmware.

## Version 5.0 New Features

This release focuses on adding support for the AirMapper Site Survey Collector and adding support for Access Point names from multiple vendors:

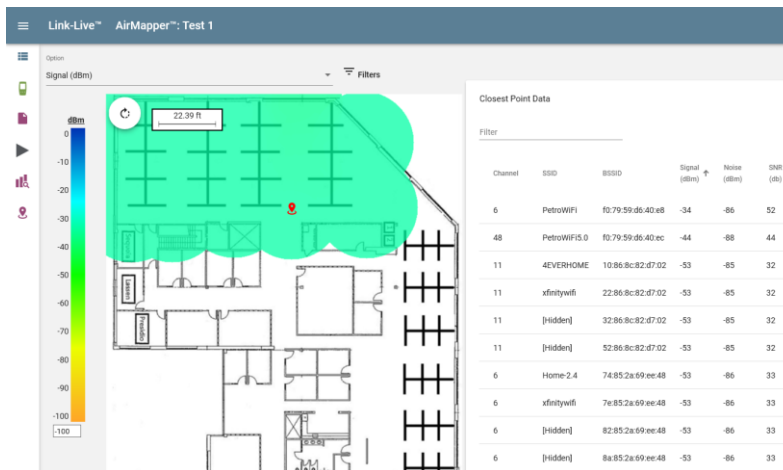
### 1. **AirMapper Site Survey Collector:**

With the AirMapper option, AirCheck G2 users can now quickly and easily gather location-based Wi-Fi measurements and create visual heat maps of key performance metrics in the Link-Live Cloud Service or AirMagnet Survey PRO application. Simple to use, the AirMapper option is ideal for quick site surveys of new deployments, change validation, and performance verification.



## 2. AirMapper Survey in Link-Live

Using Wi-Fi data collected with AirMapper on AirCheck G2, Link-Live generates powerful visualizations of your Wi-Fi network. All AirCheck G2 users have access to basic heat map visualization in Link-Live (area coverage by signal strength). A user-configurable threshold shows areas that meet or do not meet requirements.



For each data point, a sortable/filterable data table is displayed enabling detailed analysis of measured results.



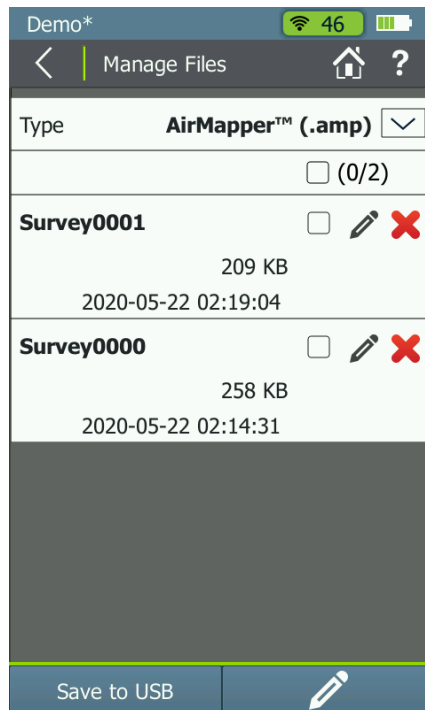
Customers with AllyCare support on their AirCheck G2 will have access to additional visualizations, including noise, SNR, Max Tx and Rx rates, Max Tx MCS, AP overlap, and Interference.

### 3. AirMapper Survey in AirMagnet Survey PRO v10.0

Using Wi-Fi data collected with AirMapper on AirCheck G2, AirMagnet Survey PRO v10.0 can generate enterprise level visualizations and reports of your Wi-Fi network. You will be able to export data collected with AirMapper on AirCheck G2 to AirMagnet Survey PRO v10.0 using one of the following methods:

#### a. USB Transfer

- When saving the survey, select Local as the destination.
- Plug a USB thumb drive into one of the USB-A ports.
- From the home screen go to Settings.
- Select the Manage Files option.
- Select the AirMapper (.amp) type.
- Select the survey file you want to export and tap on the Save to USB option.
- Remove the USB thumb drive and plug it into a PC with AirMagnet Survey PRO v10.0.
- Open the .amp file using AirMagnet Survey PRO v10.0.



#### b. Link-Live Download

- When saving the survey, select Link-Live as the destination.
- Login to your Link-Live account.
- You can download AirMapper projects from Link-Live to your PC with AirMagnet Survey PRO v10.0 using the Export for Survey PRO option.



#### 4. Channel Scan Time Improvements

The following Channel Scan Time options are now available on the AirCheck G2:

- 110ms
- 250ms
- 500ms
- 750ms
- 1000ms

#### 5. Access Point Names for More Vendors:

Support for access point names as transmitted on the beacons has been added for the following vendors on this release:

- Cisco Meraki
- Mist Systems

## Version 5.0 Bug Fixes

Bug ID	Description
172724519	Improved touchscreen response
172797116	AirCheck does not detect and report WPA security correctly
168647641	AirCheckG2 sends comment to old AutoTest results instead of most recent one
171343599	Incorrect legacy media type shows up
168318489	Eight spatial streams in 802.11ax are not identified properly
171343477	Basic Rates not cleared when Supported Rates change
167677028	SIG information is missing from the 802.11ax Capabilities
168389545	Incorrect vendor displayed for MAC address with administrator bit set
166684866	802.11n/ac Data Rates shown are incorrect
172729124	BSSID details show incorrect security types

## Frequently Asked Questions (FAQs)

For a list of FAQs and answers, as well as other knowledge base articles for AirCheck G2, Link-Live and AirMagnet Survey PRO, please visit <https://netally.powerappsportals.com/>. Select the AirCheck G2 category.