

The background of the image shows two coffee drinks on a light-colored wooden surface. On the left is a clear glass filled with an iced coffee beverage, topped with a layer of white foam and a clear plastic straw. On the right is a dark blue ceramic cup filled with a latte, featuring a white foam top with a latte art design. The overall scene is softly lit, creating a warm and inviting atmosphere.

FOREWORD COFFEE ROASTERS

Corporate Catalogue 2024





CONTENTS PAGE



1. ABOUT US (PAGES 4-7)

Introduction about Foreword Coffee Roasters



2. MOBILE COFFEE CART (PAGES 8-14)

Mobile coffee cart services catered for medium to large scale events



3. HANDCRAFTED BOTTLED DRINKS (PAGES 15-18)

Explore our selection of coffee and non-coffee handcrafted beverages.



4. CORPORATE GIFTING (PAGES 19-29)

Carefully curated gift bundles and customisable branding merchandise to suit your budget.

WE'RE HERE FOR YOU

Your every need met.



WE'RE HERE FOR YOU

Your every need met.



5. TEAM BUILDING WORKSHOPS (PAGES 30-34)
Coffee workshops available for various group sizes.



6. CORPORATE SHARING &
LEARNING JOURNEY (PAGES 35-37)
Corporate sharings and learning journeys suitable across all industries.



7. PANTRY SUPPLIES (PAGES 38-39)
Specialty coffee beans, brew bags and Nespresso-compatible coffee capsules to suit your pantry needs.



8. PAST CLIENTS AND PROJECTS (PAGES 40-43)
Browse our past projects here



1.
ABOUT FOREWORD
COFFEE ROASTERS

WHO ARE WE?

Started in 2017, Foreword Coffee Roasters is a specialty coffee company that embraces inclusivity. By using coffee as a vehicle for change, Foreword empowers persons with disabilities, special needs and mental health needs through employment opportunities.

By working with trusted coffee partners in Asian regions and beyond, green coffee beans from China, India & Indonesia are imported and roasted in-house fresh every week.

In August 2021, Foreword was one of six recipients of SG Enable's Enabling Mark (Platinum) Award, cementing Foreword's best practices and outcomes in disability-inclusive employment. As a testament to Foreword's commitment to environmental and societal well-being, Foreword became the 17th B-Corp certified business in Singapore in 2022. We are also proud to be awarded the Social Enterprise of the Year for the President's Challenge Social Enterprise Award (PCSEA) 2023!



foreword. WHY FOREWORD?

We care about **people, coffee and the environment,**



People

We recognise every individual's capability in contributing meaningfully. Together, we co-create and sustain an inclusive workplace.



Coffee

We value the importance of traceability and transparency in our coffee supply chain. We build lasting partnerships with coffee producers in Asia.



Environment

We support environmental sustainability by introducing green nudges at our cafes & packaging initiatives.

while ensuring that your **business needs are met.**

YOUR SUSTAINABLE IMPACT MULTIPLIED

By partnering with us, you will be **multiplying** the impact that you and your business can make:

-  Supporting independent and trusted coffee producers in growing Asian regions that we work closely with.
-  Providing opportunities for our employees in product preparation and in delivering of corporate services at events and workshops.
-  Making conscious effort to ensure packaging materials are sourced from responsible suppliers with transparency in their supply chain





2. MOBILE COFFEE CART

HOW IT WORKS?



We arrive at your event venue with our coffee cart 1hr earlier for set-up.

We brew fresh coffee on the spot for you and your guests.

Come back for another cuppa and stay caffeinated!

COFFEE CART MENU

Standard menu includes espresso, black coffee, white coffee and assorted tea

STANDARD MENU

Coffee

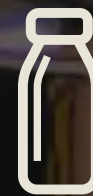
Double Espresso
Black Coffee / Americano
White Coffee / Latte

Non-Coffee

Assortment of tea by
The 1872 Clipper Tea Co

All beverages are served hot.

For more variety, add \$16.35/hr for the expanded menu:



Looking for chilled options?
Choose from our selection of bottled drinks (page 15-18).
Available as add-ons to the mobile coffee cart!

Note: Prices are inclusive of 9% GST.

MOBILE COFFEE CART PACKAGES

100
pax

STANDARD (\$643.10)

100 hot drinks



*Standard Menu: Double Espresso,
Americano, Latte, Assorted Tea*

🕒 Duration: 2hr 👤 Baristas: 2

250
pax

EXPRESS (FROM \$1384.85)

150 hot drinks, 100 bottled drinks



*Hot Drink Menu: Double Espresso,
Americano, Latte, Assorted Tea*

Variety of bottled drinks to choose from!

🕒 Duration: 2hr 👤 Baristas: 2

Customised packages
are available! Enquire
for a quotation.

MOBILE COFFEE CART PACKAGES

300
pax

FULL DAY STANDARD (\$1580.50)

300 hot drinks



*Standard Menu: Double Espresso,
Americano, Latte, Assorted Tea*

🕒 Duration: 5hr 👤 Baristas: 2

360
pax

DELUXE (FROM \$1842.10)

180 hot drinks, 180 iced drinks



*Hot Drink Menu: Double Espresso,
Americano, Latte, Assorted Tea*

*Customisable iced drink menu**

🕒 Duration: 3hr 👤 Baristas: 3

Are you a non-profit
or social enterprise?
Enquire directly for
a special rate.

*Iced drinks variety include americano, latte, cold brew tea, chocolate, mocha, matcha latte and hojicha latte.
Select preferred drink(s) in multiples of 15 cups as they are prepared prior to the event and poured from jugs.
Note: Prices are inclusive of 9% GST.

COFFEE CART ESSENTIALS

We provide condiments, paper cups and vegan milk options.

CONDIMENTS INCLUDED:

- Sugar sachets
- Wooden stirrers
- BioPak Cups

ALTERNATIVE MILK OPTIONS

Our mobile coffee carts carry Oat Milk by Outside, the perfect non-dairy alternative.



** Each coffee cart comes with 2 complimentary bottles of Outside Oat Milk which serves up to 14 pax. Extra bottles are subjected to additional cost.*

Did you know?
Our BioPak paper cups are made from renewable resources. Learn more about BioPak's responsible sourcing [here](#).



MOBILE COFFEE CART DETAILS

DIMENSIONS OF COFFEE CART

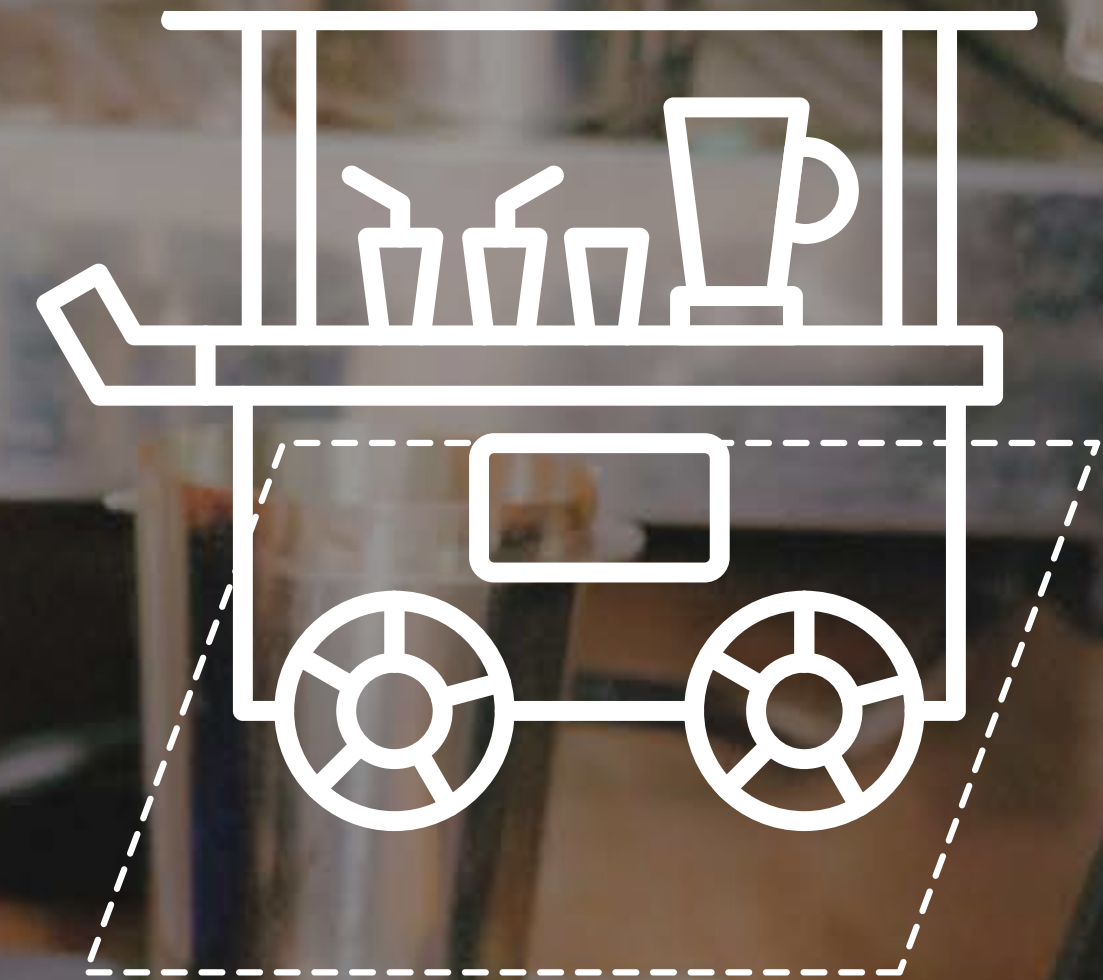
- 0.9m by 0.6m

WORK AREA REQUIRED (LEVEL GROUND ONLY)

- 1.5m by 1.5m (minimum)

FACILITIES REQUIRED

- 2 x 13amp power points
- Accessible basin for washing up
- Spare table for events with bottled and/or iced drinks



Dotted line represents work area

Note: For non ramp or lift-accessible storey, an additional \$54.50 is charged to transport the coffee cart per flight of stairs.

Surcharge of \$54.50 applies for mobile coffee cart events held within CBD area.

Prices are inclusive of 9% GST.

3. HANDCRAFTED BOTTLED DRINKS

All handcrafted drinks are freshly made for the event and served chilled.

Plant-based milk options are available for milk-based beverages.



OUR BEVERAGES

Freshly brewed for your occasion.

Net weight of each bottle is 200g.

DID YOU KNOW?

Our bottled coffee are served with a double espresso shot. Clients may opt for low-fat milk for a healthier alternative.



Special Latte (\$8.50)

This tastes fruitier than the usual beans used in other espresso-based drinks.



White Coffee (\$7.41)

A smooth and balanced drink for the everyday coffee-drinker.



Black Coffee (\$5.78)

Bold and refreshing with every sip.




Enjoy **FREE** delivery to 1 location with min. order of \$220!

Note: Prices are inclusive of 9% GST.

OUR BEVERAGES

Freshly brewed for your occasion.

Net weight of each bottle is 200g.

DID YOU KNOW?

We have a Return & Reuse initiative where we collect back used glass bottles to wash and sanitise before reusing them!



Mocha (\$8.50)

A go-to chocolate drink with double shots of espresso for that added kick!



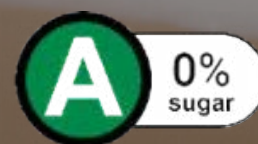
Chocolate (\$8.50)

The sweet-tooth's favourite or great as a comfort drink!



Eternal Garden Cold Brew Tea (\$7.41) 

A delicate tea created by mixing pure Ceylon tea leaves with natural rose petals.




Enjoy **FREE** delivery to 1 location with min. order of \$220!

Note: Prices are inclusive of 9% GST.

OUR BEVERAGES

Freshly brewed for your occasion.

Net weight of each bottle is 200g.

❄️ DID YOU KNOW?

Our handcrafted bottled drinks are delivered in foam boxes filled with ice to ensure that they are kept chilled!

Mix & match as you like!

10% off 50 bottles & above

15% off 100 bottles & above

20% off 200 bottles & above



Hojicha Latte (\$8.50)

Enjoy the comforting blend of roasted green tea with a velvety smooth milk finish.



Matcha Latte (\$8.50) 👍

Savour the bitter-sweetness of this exquisite drink.



Enjoy **FREE** delivery to 1 location with min. order of \$220!

Note: Prices are inclusive of 9% GST.

4. CORPORATE GIFTING



4.1 ASSORTED DOOR GIFTS



Coffee Brew Bags



Chunky Cookies



HuskeeCups

4.2 COFFEE BREW BAGS

Sourced from Asia, locally roasted.

5 Varieties available:

- Diversity Blend
- Mooleh Manay Honey
- Ou Yang Natural
- Pangalengan Washed
- Xamtai Natural

Available in individual sachets or bulk purchase.

 DID YOU KNOW?

5% of sales revenue derived from these coffee brew bags goes to community development projects in coffee-growing regions of Asia.



4.2 COFFEE BREW BAGS

Sourced from Asia, locally roasted.

\$2.40 per brew bag

5% off min. order of 150 brew bags.

7% off min. order of 300 brew bags.

10% off min. order of 500 brew bags.

Customised bellyband @ \$0.55/set

Twine with kraft note @ \$0.87/set

Satin ribbon with custom note @ \$1.09/set

Note: Brew bags are best consumed before 2 December 2024.



Enjoy **FREE** delivery to 1 location with min. order of \$220!

Note: Prices are inclusive of 9% GST.



Ou Yang Natural

Enjoy this award-winning coffee with its bright notes of cherries and dark chocolate.

Diversity Blend

A three-region blend from China, Laos and Indonesia, this blend represents Foreword's strength in diversity.



Xamtai Natural

Here's to a unique cuppa with prominent strawberry notes & a tea-like finish.



4.2 COFFEE BREW BAGS

Sourced from Asia, locally roasted.

\$2.40 per brew bag

5% off min. order of 150 brew bags.

7% off min. order of 300 brew bags.

10% off min. order of 500 brew bags.

Customised bellyband @ \$0.55/set

Twine with kraft note @ \$0.87/set

Satin ribbon with custom note @ \$1.09/set

Note: Brew bags are best consumed before 2 December 2024.



Enjoy **FREE** delivery
to 1 location with min.
order of \$220!

Note: Prices are inclusive of 9% GST.



Mooleh Manay Honey

Expect the juiciness of dried raisins and lemon to shine with this single-origin Indian coffee.

Pangalengan Washed

With tasting notes of date and fig, enjoy a smooth acidity when you brew a cuppa.



4.2 COFFEE BREW BAGS - FESTIVE GIFT BOX

Gifting Ready

Each gift set consists:

- 8 Assorted coffee brew bags
- 1 Magnetic lid box

Enjoy specialty coffee from 4 single origins:

- Mooleh Manay Honey
- Ou Yang Natural
- Pangalengan Washed
- Xamtai Natural

Enquire for bulk rates.

NEW!

\$23.87
per gift box



4.3 LUXURY TEA BAGS

By The 1872 Clipper Tea Co.

\$2.40 per tea bag

5% off min. order of 150 tea bags.
7% off min. order of 300 tea bags.
10% off min. order of 500 tea bags.

Customised bellyband @ \$0.55/set
Twine with kraft note @ \$0.87/set
Satin ribbon with custom note @ \$1.09/set



Varieties of tea are subject to availability.



Enjoy **FREE** delivery
to 1 location with min.
order of \$220!

Note: Prices are inclusive of 9% GST.

4.4 CHUNKY COOKIES

Freshly baked in-house with care.

2 options to choose from:

- Standard Chunky Cookies (\$6.54/ pack of 2)
- Lava Chunky Cookies (\$7.41/ pack of 2)

5% off min. order of 50 packs.

10% off min. order of 100 packs.

Customised options @ \$0.33/pack for black & white sticker OR \$0.55/pack for coloured sticker



Enjoy **FREE** delivery to 1 location with min. order of \$220!



Standard Chunky Cookie Pack

Comes with:

- Classic Chocolate Chip Walnut
- Double Chocolate Chip Macadamia



Lava Chunky Cookie Pack

Choose 2 flavours:

1. Matcha Macadamia Chocolate Chip with Peanut Butter Lava
2. Biscoff Walnut with Speculoos Lava
3. Double Chocolate Chip Macadamia with Nutella Lava

Note: Prices are inclusive of 9% GST.

4.5 HUSKEECUPS

Award-winning, B Corp-certified

Available in:

- Two colours - Charcoal & Natural
- Three sizes - 6oz, 8oz, 12oz



Benefits of the HuskeeCup:

- Repurposes waste material (coffee husk)
- Comfortable to hold and cool to touch
- Durable and dishwasher friendly
- Non-toxic (BPA free)



4.5 CUSTOMISED LOGO MERCHANDISE

Available for bulk purchase with an option to customise logo on HuskeeCup lids.

Enquire now to find out more.

4.6 POPULAR GIFT BUNDLES

Brew it Yourself Gift Bundle



Consists of:

- 2 Coffee Brew Bags
- 1 Pack of Chunky Cookies
- 1 Bennis Ethicoa Chocolate bar

HuskeeCup Bundle



Consists of:

- 1 HuskeeCup (Charcoal/ Natural)
- 5 Coffee Brew Bags
- 1 Foreword Pouch

Available in 6oz, 8oz and 12oz

Fruity Fiesta Snack Box



Consists of:

- 3 Coffee Brew Bags
- 2 Clipper Tea Bags
- 1 Green Day Strawberry Chips
- 1 Green Day Mango Chips



5. TEAM BUILDING WORKSHOPS



5.1 COFFEE APPRECIATION WORKSHOP

In-person Team-building Workshop

Taste coffee like a coffee connoisseur! By tasting different coffees in this workshop, learn the preferences you have towards specialty coffee varieties and how to choose your beans the next time you visit a coffee shop!





5.1 COFFEE APPRECIATION WORKSHOP DETAILS

 Duration: 1 Hour

You will learn:

1. Coffee bean value chain
2. Basics of coffee cupping
3. Your preferences in coffees

Rates

- 5-9pax: \$54.50/pax
- 10-14pax: \$49.05/pax
- 15-20pax: \$43.60/pax

Workshops include:
Cupping Spoon, Coffee Beans, Cups, Hot Water

Note: Prices are inclusive of 9% GST.



5.2 COFFEE BREWING WORKSHOP

In-person Team-building Workshop

Learn to brew a cup of pourover like a pro. By using the V60, we break down the variables and processes in this workshop on how to brew a delicious cup of coffee.

At the end of the workshop, you will have a take home kit and knowledge to kickstart your pour over journey!



5.2 COFFEE BREWING WORKSHOP DETAILS

⌚ Duration: 1 Hour

You will learn:

1. The V60 method
2. Comparison with the drip bag coffee brewing method
3. Variables to consider for pourover coffee
4. Navigating brew ratio

Rates

- 5-9pax: \$81.75/pax
- 10-14pax: \$76.30/pax
- 15-20pax: \$70.85/pax

Workshop includes:
HARIO V60 Dripper, Filter
Paper, Coffee Beans,
Digital Weighing Scale

Note: Prices are inclusive of 9% GST.

6. CORPORATE SHARING & LEARNING JOURNEY





6.1 CORPORATE SHARING

⌚ Duration: 1 to 1.5 Hour

At the heart of who we are, Foreword believes in the power of shared wisdom, embracing diversity while creating an inclusive workplace within the specialty coffee industry.

As a proud recipient of the Enabling Mark (Platinum) Award (2021) and Social Enterprise of the Year (2023), we are not just in the business of making delicious coffee; we're crafting a workplace that's as rich and diverse as our favourite blends.

Cost: \$545/ in-person sharing

Note: Prices are inclusive of 9% GST.



6.2 LEARNING JOURNEY

⌚ Duration: 1 to 1.5 Hour

Embark on a tailored learning journey with us, designed for schools and corporate settings. Our flexible program can be customised to integrate coffee education, social inclusion, and a theme of your choice, ensuring a unique and enriching experience for all participants.

Cost: From \$545

Note: Prices are inclusive of 9% GST.



7.
PANTRY
SUPPLIES

COFFEE BEANS

Sourced from Asia, locally roasted.

- Our beans are directly sourced from coffee producers in China, Indonesia and India
- Beans are roasted locally in small batches
- We feature 10 single-origin coffees

By purchasing from producers we trust and work closely with, we can ensure the cultivation of community engagement with every coffee partner.

Enquire for bulk discounts.



8. PAST CLIENTS AND PROJECTS



GOVERNMENT-REGISTERED VENDOR

Foreword Coffee Roasters is a registered vendor under “Move Foreword Pte Ltd” on Vendors@Gov, and are familiar with the e-invoicing procedure.

We have worked with various government ministries and agencies including:

- Attorney-General’s Chambers (AGC)
- Ministry of Education (MOE)
- Ministry of Finance (MOF)
- Ministry of Health (MOH)
- Ministry of Home Affairs (MHA)
- Ministry of Sustainability and the Environment (MSE)
- National Environment Agency (NEA)





Seasons Greetings Gift Bundle



Launch of 'Coffee with a Cop'



PAST PROJECTS

We are dedicated in working with our clients to provide the best service.



Catering for Inclusive Business Forum



Custom Bottled Drinks (Alibaba Cloud)





Mobile Coffee Cart (Singapore Land Group)



Custom HuskeeCups (Roche)



Coffee Brew Bags (NUS CAPT)



Community Chest Awards 2022



Employee Care Packs (MSS)



HAVE SOMETHING IN MIND?

Let us know your preference and budget so we can work something out.





Enquire at hello@forewordcoffee.com

 WhatsApp: 89490142

 www.forewordcoffee.com

 @forewordcompany

