



# K Series Manual Coffee Grinder



## User Instructions



Dial Pointer      Adjustment Dial Ring

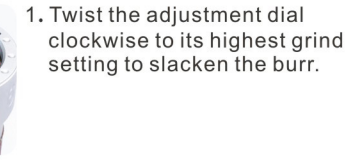
1. Twist the adjustment dial to adjust the grind setting. The dial pointer (red dot) above the dial will tell you the number attributed to the grind setting. A smaller number signifies a finer grind.
2. There are 90 clicks in an entire rotation with a maximum total of 1.5 rotations. Each rotation adjusts the grind size by 2mm; each click adjusts the grind by 0.022mm or 22 microns.
3. After reassembly of the grinder, ensure the adjustment dial is calibrated correctly before using. To calibrate, please see the calibration guide below.
4. Please refer to the Grind Setting Reference Card for recommendations on the setting for each brewing method.
5. Place the beans into the upper bean chamber and twist the crank handle and lever in a clockwise motion to start grinding.

Video instructions on assembly and disassembly are available on our website: <https://1zpresso.com> or our official YouTube channel: 1Zpresso; or scan the QR codes below.

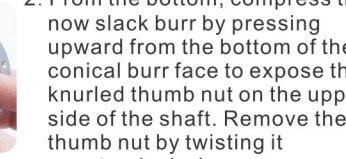
## Disassembly

(Illustrated with the K-Plus version)

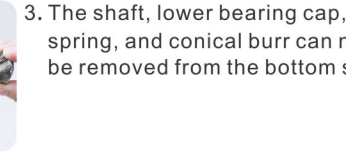
Note: Do not attempt to remove the burr until reaching step 3.



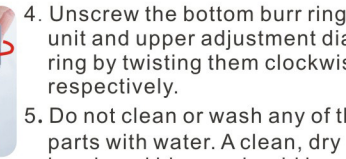
1. Twist the adjustment dial clockwise to its highest grind setting to slacken the burr.



2. From the bottom, compress the now slack burr by pressing upward from the bottom of the conical burr face to expose the knurled thumb nut on the upper side of the shaft. Remove the thumb nut by twisting it counterclockwise.



3. The shaft, lower bearing cap, spring, and conical burr can now be removed from the bottom side.



4. Unscrew the bottom burr ring unit and upper adjustment dial ring by twisting them clockwise, respectively.

5. Do not clean or wash any of the parts with water. A clean, dry brush and blower should be used only.

Warning: DO NOT further disassemble or remove the following components:



Central shaft and inner/conical burr



The burr ring unit and outer burr



The adjustment dial ring

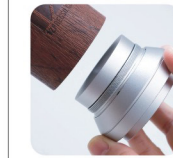


The bearings attached to the uppershaft chamber

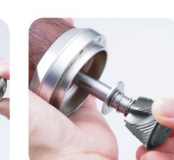
## Assembly



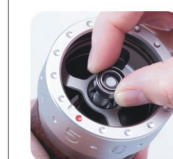
1. Attach the adjustment dial ring by screwing it counterclockwise to hand-tight into its respective position of the upper body.



2. Twist the adjustment dial clockwise to ensure its highest grind setting is selected.



3. Screw the lower burr ring unit firmly into position by twisting it counterclockwise.



4. Ensuring the lower bearing unit and spring are attached correctly, with the spring and the convex edge of the bearing cap facing toward the bearing, slide the shaft and burr unit through the bottom of the shaft chamber.



5. Slide the upper bearing and upper bearing in place, respectively, on to the upper-side of the shaft. Ensure the bearing cap is facing the correct way, with its dotted concave edge facing upward.



6. While pressing the conical burr from the bottom to compress the spring, secure the knurled thumb nut by screwing it clockwise until finger-tight to hold the burr and shaft in place.

7. Twist the adjustment dial to its lowest/finest setting. If the lowest number is not at "0," follow the calibration guide below.

## Calibrating the Adjustment Dial

1. The principal idea of calibrating the starting point of the adjustment dial is to shift the position of the knurled thumb nut relative to the adjustment dial by loosening or tightening the knurled thumb nut as required.
2. Due to the difficulty in ensuring consistency in tightness when securing the knurled thumb nut, it is common for the starting point of the adjustment dial to be around two or more clicks out following re-assembly.

### Instructions

1. Ensure the subsequent conditions are met following re-assembly:
  - a. The dial adjustment dial is set to its lowest setting and cannot be twisted further without force.
  - b. The central shaft is not loose nor incorrectly installed.
  - c. The red dot should be pointing at or around "0". If it is not at "0," move on to steps two or three.

2. If the red dot is to the right of the "0" on the adjustment dial, then note the distance between the "0" and the red dot. Next, twist the adjustment dial to its coarsest setting and loosen the knurled thumb nut by twisting it counterclockwise by a distance relative to the gap previously noted. Retighten the adjustment dial to its lowest setting and note the starting number. If it is not at zero, repeat this step or the subsequent step if needed.

3. If the red dot is to the left of the "0" on the adjustment dial, then just as in step 2, note the distance between the "0" and the red dot. Twist the adjustment dial to its coarsest setting and tighten the knurled thumb nut by twisting it clockwise relative to the distance previously noted. Retighten the adjustment dial to its lowest setting and note the starting number. If it is not at zero, repeat this step or the previous step if needed.

### Precautions

- Ensure the grinder is never washed or cleaned with water.
- To ensure longevity, keep the grinder in a dry location.
- Please follow the instructions properly for disassembly and reassembly, paying attention to the order of parts and their correct position.
- This is not a toy. Keep the grinder out of reach of young children to ensure their safety.

