



## MANUAL

- |            |                            |            |              |
|------------|----------------------------|------------|--------------|
| <b>01/</b> | STRUCTURE                  | <b>02/</b> | PACKING LIST |
| <b>03/</b> | OPEN THE SAFE              | <b>05/</b> | CODE SET     |
| <b>06/</b> | CLOSE THE SAFE<br>DATE SET | <b>07/</b> | RECORD CHECK |
| <b>08/</b> | ALARM SET                  | <b>09/</b> | MOUNTING     |
| <b>10/</b> | CUSTOMER SERVICE           |            |              |

### WARNING

**DO CLOSE THE DOOR BEFORE YOU MOVE THE SAFE.  
DO KEEP RECORD OF THE NUMBERS ON THE KEY IN CASE OF LOST.**

If you experience any problems or challenges with your safe, please contact us. Many issues can be resolved quickly without the product being returned. Our customer care team is available at **SUPPORT@TIGERKINGSAFE.COM** to answer your questions.

E-Mail: [support@tigerkingsafe.com](mailto:support@tigerkingsafe.com)

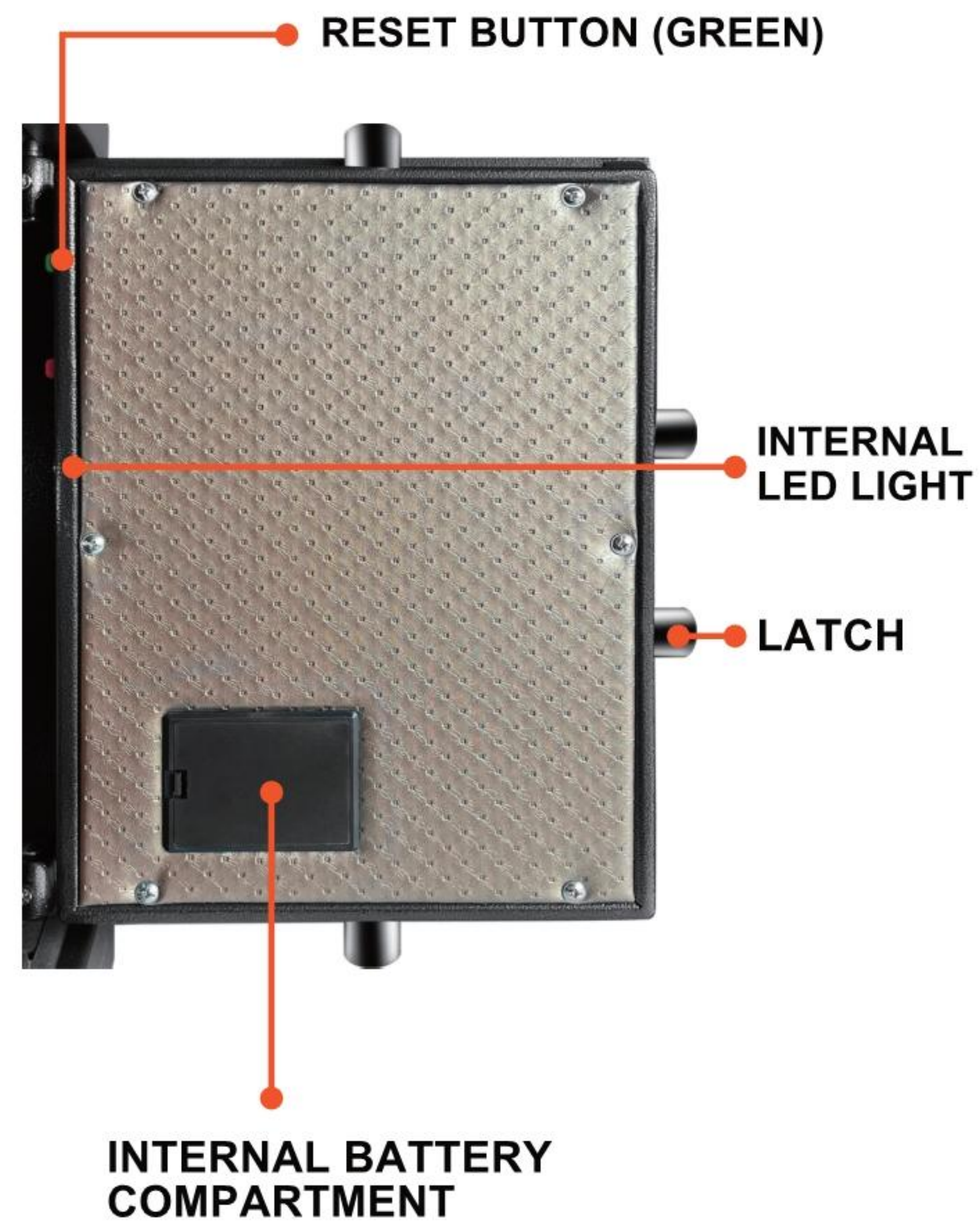
Facebook: [@TIGERKINGSAFES](https://www.facebook.com/TIGERKINGSAFES)

Messenger: [m.me/TIGERKINGSAFES](https://www.m.me/TIGERKINGSAFES)



## STRUCTURE

### BACK OF THE DOOR



### FRONT OF THE DOOR



## PACKING LIST



The accessory box includes:

Blue Master Key



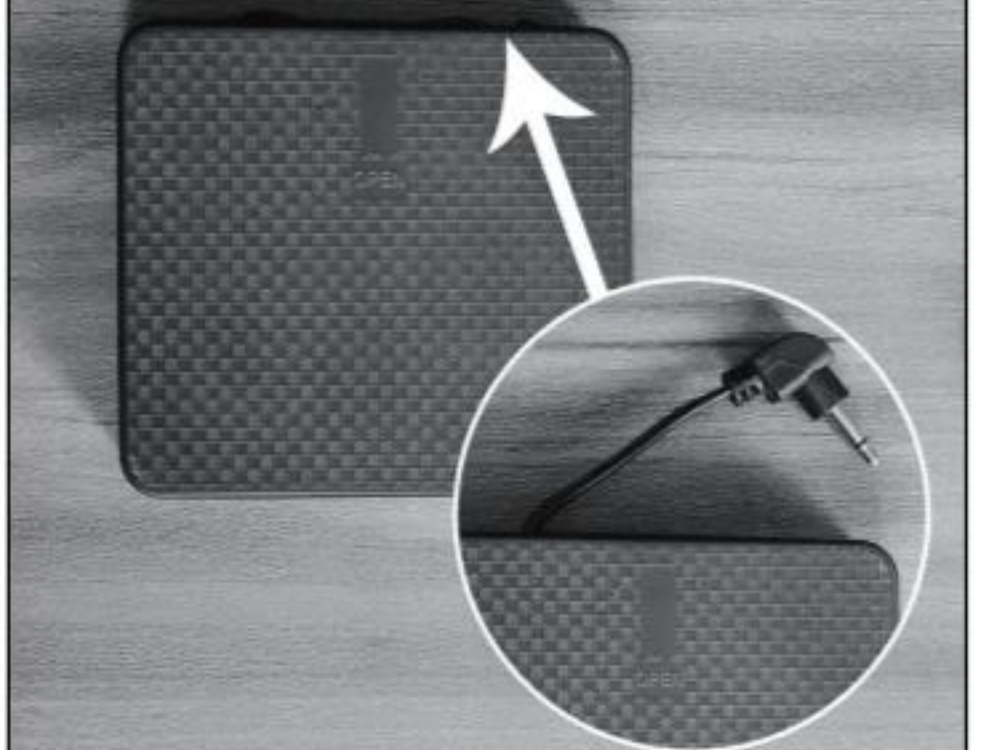
Black Emergency Key



Inner Door Key



External Battery Box



(Only for 65YZ model or higher safe)

Inside the safe:



### NOTICE:

1. Please follow the instruction;
2. Keep the emergency key in a safe place, but not in the safe;
3. Replace the batteries when the screen shows "-LO-BATTE";
4. Test your combination several times before putting valuables inside;
5. Mount the safe.



## OPEN THE SAFE

### ◆ *Two Ways To Open The Safe:*

*THE MASTER KEY IS ALWAYS NEED TO OPEN THE SAFE.*

#### ◆ *FIRST WAY:*

**STEP 1:** Located the emergency key hole by pushing the right side of the plastic cover (refer to the picture), then fully insert the emergency key and turn counter-clockwise.

**STEP 2:** Located the master key hole by sliding the cover to the left and insert the master key then turn clockwise.

**STEP 3:** Turn the knob clockwise to open the safe.



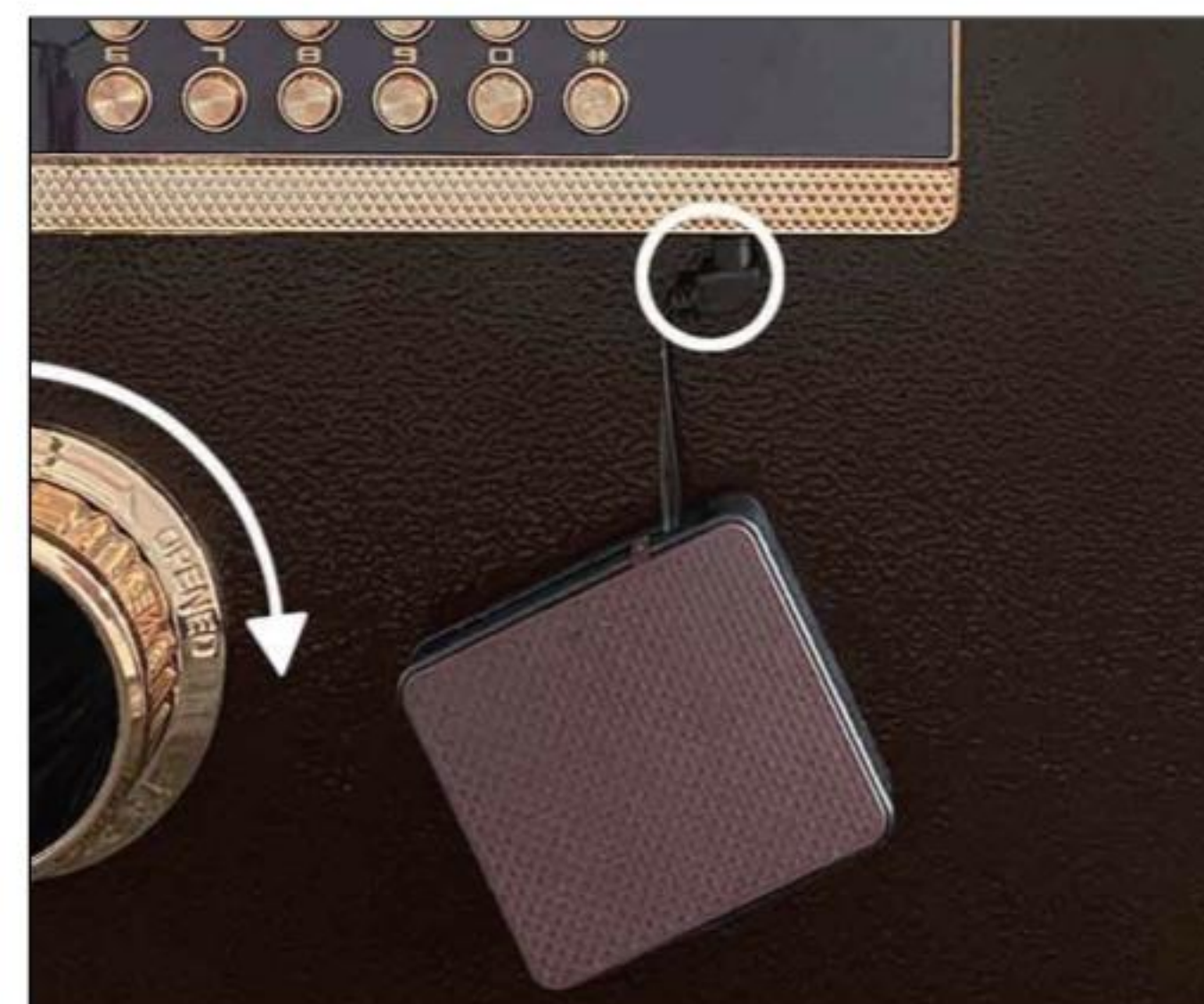
#### ◆ *SECOND WAY:*

*(In this way, you need install 4xAA batteries (not included) into the external battery box and then plug it to the keypad , the plug is under the keypad) .*

**STEP 1:** Located the master key hole by sliding the cover to the left and insert the master key;

**STEP 2:** Press "#" to wake up the system;

**STEP 3:** Input the master code/user code (the factory default code is 123456 or 1234), and then press "#" as confirming;



**STEP 4:** If the code is correct, the screen will show "Open" and then turn the master key clockwise and rotating the knob clockwise within the screen lights on to open the safe.

#### **NOTICE:**

1. 10 seconds without any operation, the keypad will go back to stanby status, all the operation are invalid;
2. Clear function: Press "\*" to clear the last digit you have input;
3. Security display feature: Press "#" to wake up system, and press "\*" before you input the code, any digit you input will be dispaly by showing "□". This function is one-time set up, you need reset for next time.
4. Once open the door, install the batteries into the internal battery compartment. (The external battery box is for emergency use, it can supply power to the keypad.)





## CODE SET

### ◆ Master Code Setting:

**STEP 1:** Keep the door opening. Wait until the screen is in standby status(all lights turn off) and then press "#", the screen will show "-----";

**STEP 2:** Input "00" and then press reset button (a green button in the hinge side of the door, please refer to structure picture), the screen will show "-----";

**STEP 3:** Input the new master code (1 to 8 digits) and press "#";

**STEP 4:** The new code will be confirmed by showing "into".

### ◆ User Code Setting:

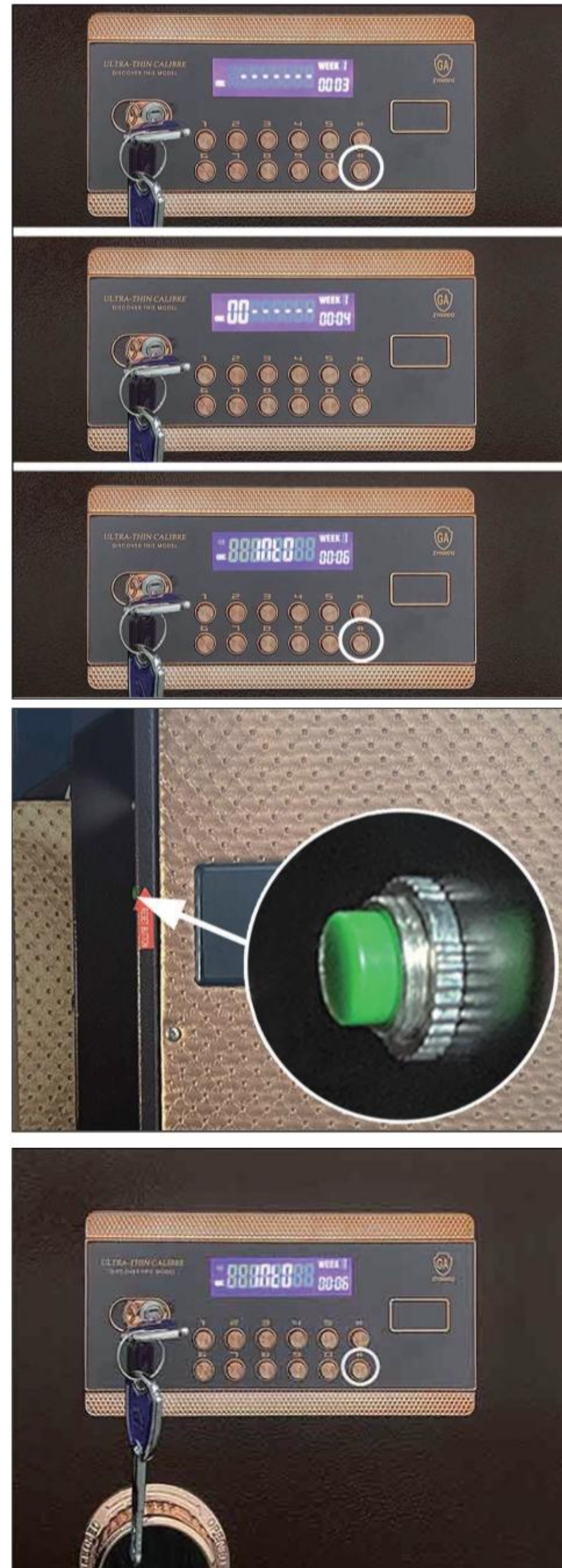
**STEP 1:** Keep the door opening. Wait all lights turn off. Press reset button (a green button in the hinge side of the door, please refer to structure picture), the screen will show "-----";

**STEP 2:** Input the new user code (1 to 8 digits) and press "#";

**STEP 3:** The new code will be confirmed by showing "into".

### NOTICE:

1. 10 seconds without any operation, the keypad will go back to standby status, all the operations are invalid;
2. The default Master code and User code will be defective until new code set. To protect your valuables, please do change both of two codes once receive the safe;
3. Test the code before you close the door. If the code is correct, the screen will show "OPEN".



## CLOSE THE SAFE

Close the safe, rotating the knob counterclockwise and then turn the master key counterclockwise. Pull out the master key and keep it in a safe place.



## DATE SET

**STEP 1:** Under standby status, press "\*" to go to modify mode;

**STEP 2:** Press the numbers to adjust the values:

For date, it shows as Year—Month—Date;

For day, it shows as Week No:

Week 1 = Monday, Week 2=Tuesday, Week 3=Wednesday...

For time, it shows as Hours: Minutes;

Total 11 codes, after you set all the codes, the system will confirm and save automatically then go back to standby mode(all lights turn off).

### NOTICE:

1. System can not identify the validity of the input, please ensure your input is valid;
2. 10 seconds without any operation, the keypad will go back to standby status, all the operations are invalid;
3. The data of code and opening record will not be lost after power failure, but you need to reset the time and date after reconnected the power.





## RECORD CHECK

*The system can keep max 35 opening records, exceed this limit, the first one will be covered by next one.*

### ◆ Record Checking:

**STEP 1:** Enter Master code or user code, the screen will show "open";

**STEP 2:** Press "0" or "8" to check the record;

**STEP 3:** The screen will show as per below:

First screen: PASS1 OR PASS2, and record no.

PASS1 means user code, PASS2 means master code, the record no will be shown in the top of right corner of screen.

second screen: Date and time of this opening record.

**STEP 4:** Press "0" to check the last one, press "8" to check the next one.

### NOTICE:

If use Emergency key plus master to open the safe, the system will not keep the opening record.



## ALARM SET

### ◆ Dual Alarm System:

**1ST:** Three wrong enters (master code or user code) will active the Alarm. The alarm will lasting 60 seconds until the correct code entered.

After Alarm stopped, the warning system is still on work;

**2ND:** Vibrate Alarm. This alarm only actives after manual setting.

**STEP 1:** Under standby status, press "0", the screen will display "Alert on". The safe will alarm once be punched or shocked;

**STEP 2:** Enter the code (master or user code), the alarm will be deactivated.

### NOTICE:

1. The Vibrate Alarm will be deactivated after correct code entered, you need set again for next time;

2. 10 seconds without any operation, the keypad will go back to standby status, all the operations are invalid.





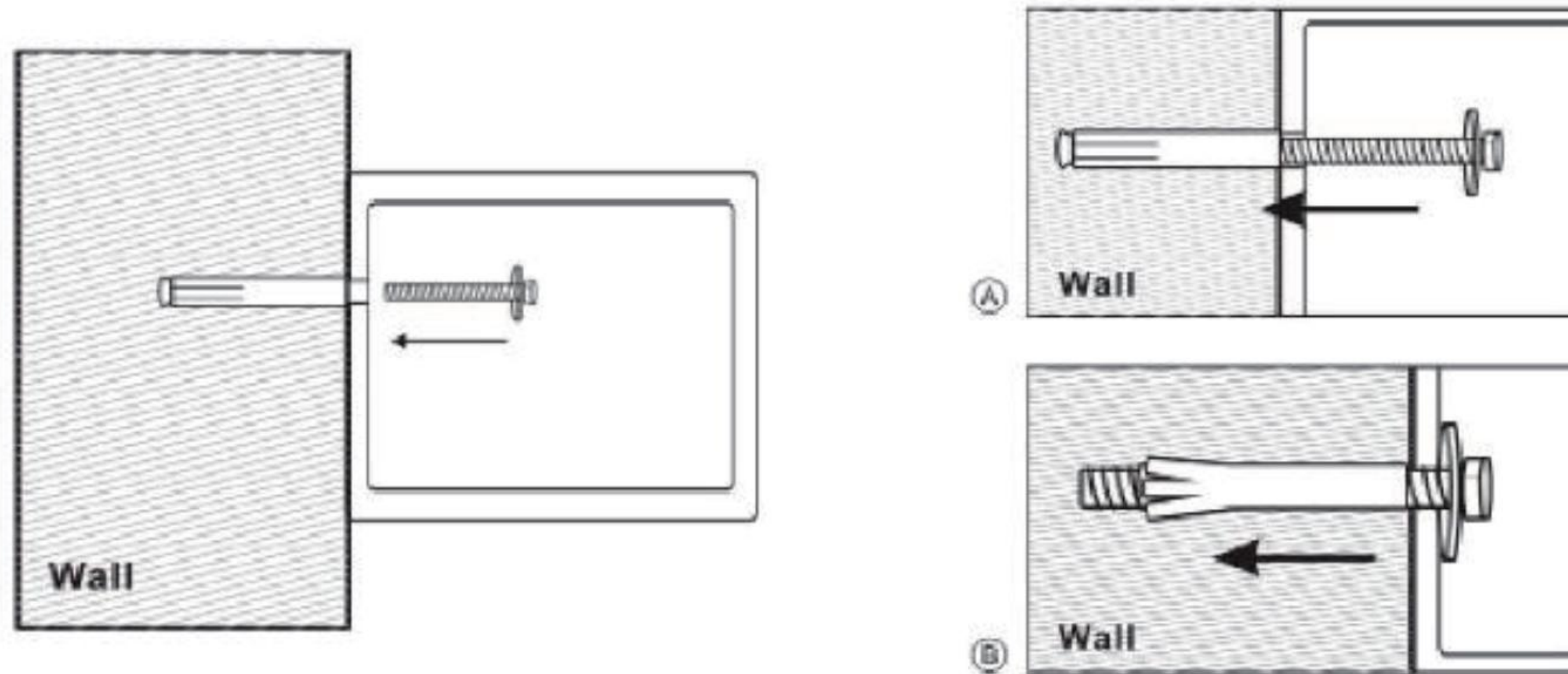
## MOUNTING

Fix the safe in the place which is not easy to move.

- Drill holes for expansion bolts (or clamping screws) at the right place;
- Turn the expansion bolts counterclockwise to separate;
- Use the expansion bolts (or clamping screws) to secure the case to the wall or the floor;
- Make sure the case is mounted in place as required and then tighten all screws.

### NOTICE:

1. For concrete walls, expansion bolts are recommended; for wooden walls, clamping screws are recommended;
2. The clamping screw is not included, you need prepare by yourself.



## CUSTOMER SERVICE

*Where could I find the instruction video?*

*To see the tutorial video:*

1. Go to our Facebook :@TIGERKINGSAFES
2. Go to our Youtube channel:  
<https://www.youtube.com/channel/UC7II4xZAK3s-cGA3JgmI9VA>
3. Contact us to get the videos (24/7):  
Messenger: [m.me/TI.GERKINGSAFES](https://www.facebook.com/TIGERKINGSAFES)  
Email: [Support@tigerkingssafe.com](mailto:Support@tigerkingssafe.com)

*What should I do if losing the keys?*

The information below is important to get replaced keys:

If with Master key ----

The numbers on the master key or the label on the right/left side of the safe

If with emergency key ----

The numbers on the emergency key or the number in the emergency key hole

*Customer Support /Warranty*

The possible problem you might meet:

1. Cargo damaged
2. Missing accessories
3. Unsatisfied with the safe
4. Or any other setting problem

We encourage you to contact us (24/7):

Messenger: [m.me/TI.GERKINGSAFES](https://www.facebook.com/TIGERKINGSAFES)  
Email: [Support@tigerkingssafe.com](mailto:Support@tigerkingssafe.com)