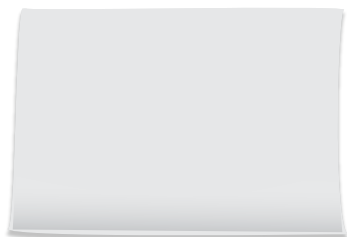


# FloraLife® Bouquet Wrap

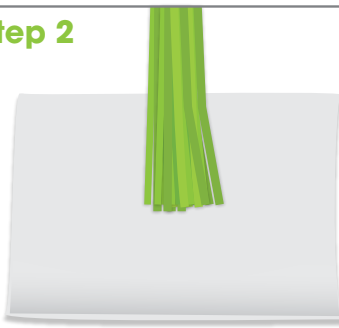
## Use Instructions

### Step 1



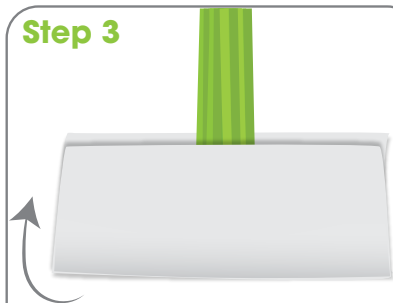
Lay the sheet on a flat surface

### Step 2



Place the bottom 3 inches of the flower bunch over the sheet as shown on the picture.

### Step 3



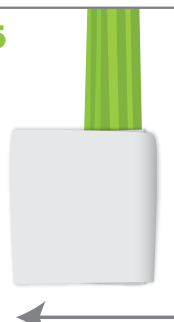
Fold the sheet over the stems.

### Step 4



Fold the left side of the folded sheet over to the right.

### Step 5



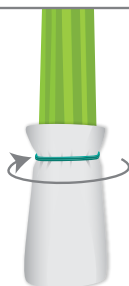
Fold the right side of the folded sheet to the left.

### Step 6



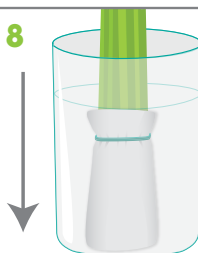
Tuck the left over material around the back.

### Step 7



Tie the top of the wrap 1 inch down with the rubber band.

### Step 8



Completely submerge the wrapped bundle in a properly closed and mixed storage and transport solution. Let it soak for 10 seconds.

### Step 9



Transfer stems from the container to the transport bag given. Place the bag over the hydrated bundle making sure that the bottom of the stems reach the bottom of the bag.

### Step 10



Close the bag with the rubber band at the edge of the hydrated bundle. Close it tight.



The flower bunch should look like this and is ready to be packed for shipping.