

# GLOUCESTER'S

## Model 192-D & 192-S Automatic Dual or Single Turret Winder

### ORDERING INSTRUCTIONS

The parts plates in this catalog are exploded views which show each part of an assembly individually. They provide a guide for disassembly and assembly and ensure easy identification of parts for re-ordering.

When ordering, first locate the required part on one of the following parts plates.

Give complete information

Serial Number, Plate, Key and  
Part Number, Quantity Required.

If the part required does not appear on a parts plate, give a complete description relating it to the closest item you can identify.

EXAMPLE: Decal attached to tank cover No. 145.

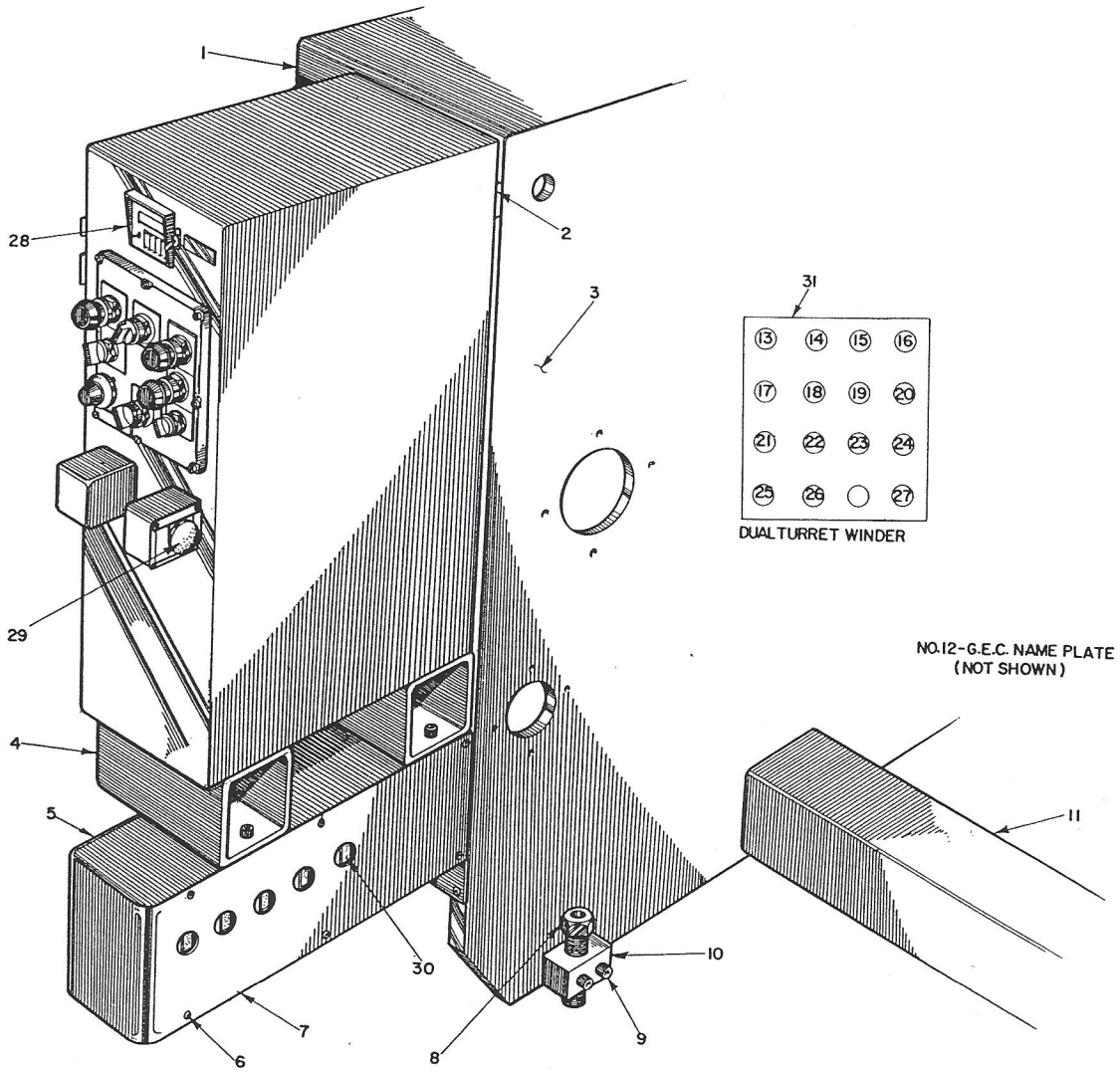
ALWAYS INCLUDE THE SERIAL NUMBER OF YOUR MACHINE.

When a part is ordered, another part may be sent with it. This is to ensure competent repair, which in our opinion, would not be possible without the additional part.

Adjustments may be required for some parts in order that the part fit properly to meet your particular specifications, i.e. machining, drilling, grinding.



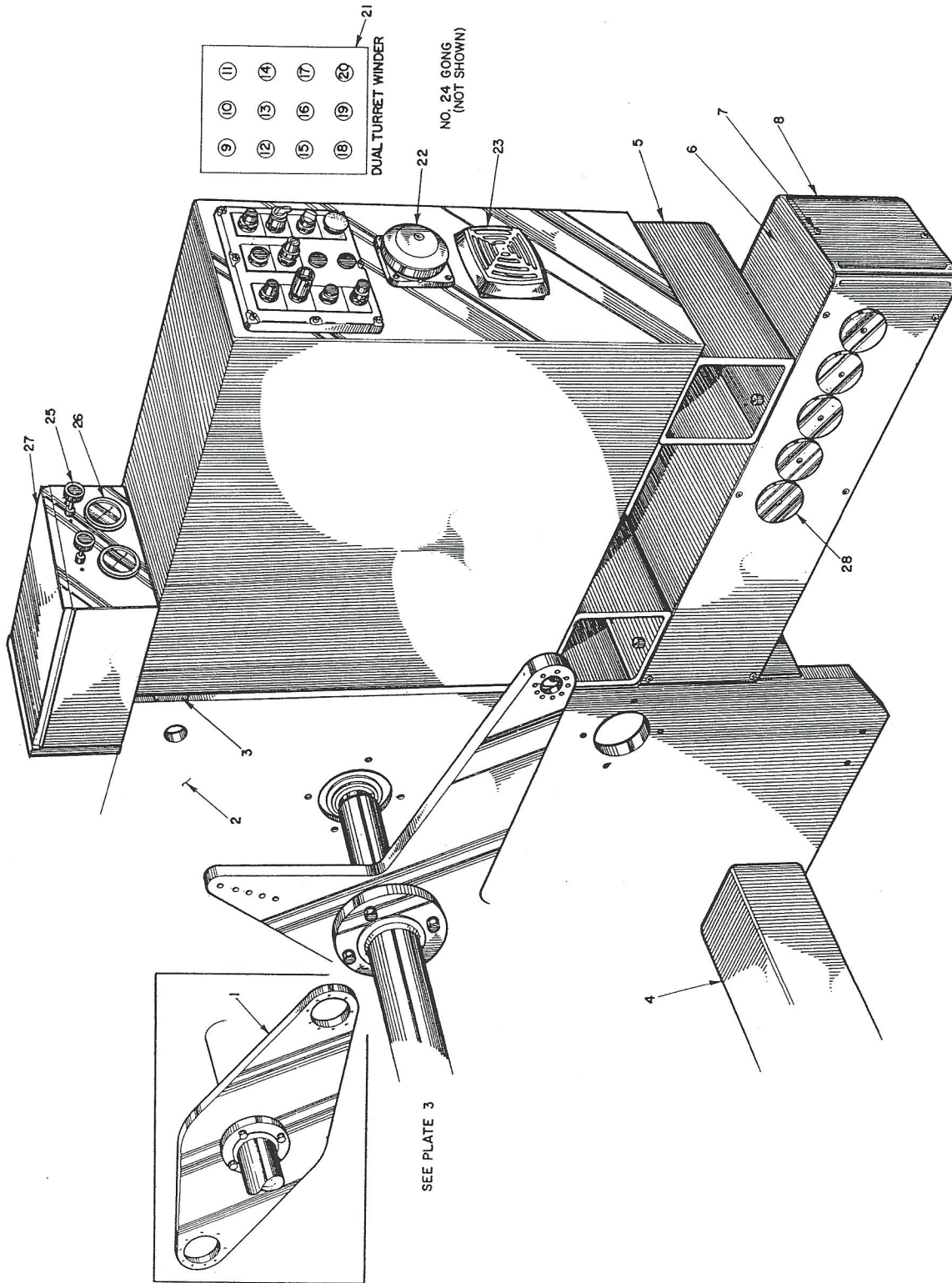
# PLATE 1 L.H. CONTROLS & FRAME



# LIST 1 L.H. CONTROLS & FRAME

Key No.	Description	Part Number
1	Enclosure (L.H.) Dual	C10069157
	Enclosure (L.H.) Single	B10076986
2	Spacer	A10074679
3	Frame (L.H.) Dual	D10069034
	Frame (L.H.) Single	D10076988
4	Support	B10077169
5	Safety Support	C10074242
6	Button Head Screw	10 - 32 X 1/4
7	Support Cover	B10075934
8	Leveling Screw	A04000120
9	Socket Head Cap Screw	1/2 - 13 X 2 1/4
10	Leveling Block	B01000154
11	Girt	C10067855
12	G.E.C. Name Plate	751
13	Push-Pull Button	8545 (Top Drive)
14	Selector Switch	2956 (Top Drive-Forward-Reverse)
15	Push Pull Button	8545 (Bottom Drive)
16	Selector Switch	2956 (Bottom Drive-Forward-Reverse)
17	Selector Switch	2956 (Top Turret Speed)
18	Potentiometer	11799 (Top Turret Man. Adjust)
19	Selector Switch	2956 (Bottom Turret Speed)
20	Potentiometer	11799 (Bottom Turret Man. Adjust)
21	Push-Pull Button	8545 (Nip Roll-Start-Stop)
22	Selector Switch	2956 (Nip Roll Speed-Auto-Man.)
23	Speed Potentiometer & Potentiometer Dial	5860 Potentiometer 3855 Dial (Nip Roll Speec - Auto-Man.)
24	Dancer Positioner	5858 (Nip Roll Dancer Pos. Adjust.)
25	Flashing Pilot Light	8604
26	Push Button	1917
27	Push Pull Button	8201
28	Counter	17701
29	Emergency Stop	8420
30	Photo Switch	27131 Base 27130 Head
31	Push Button Station	2777

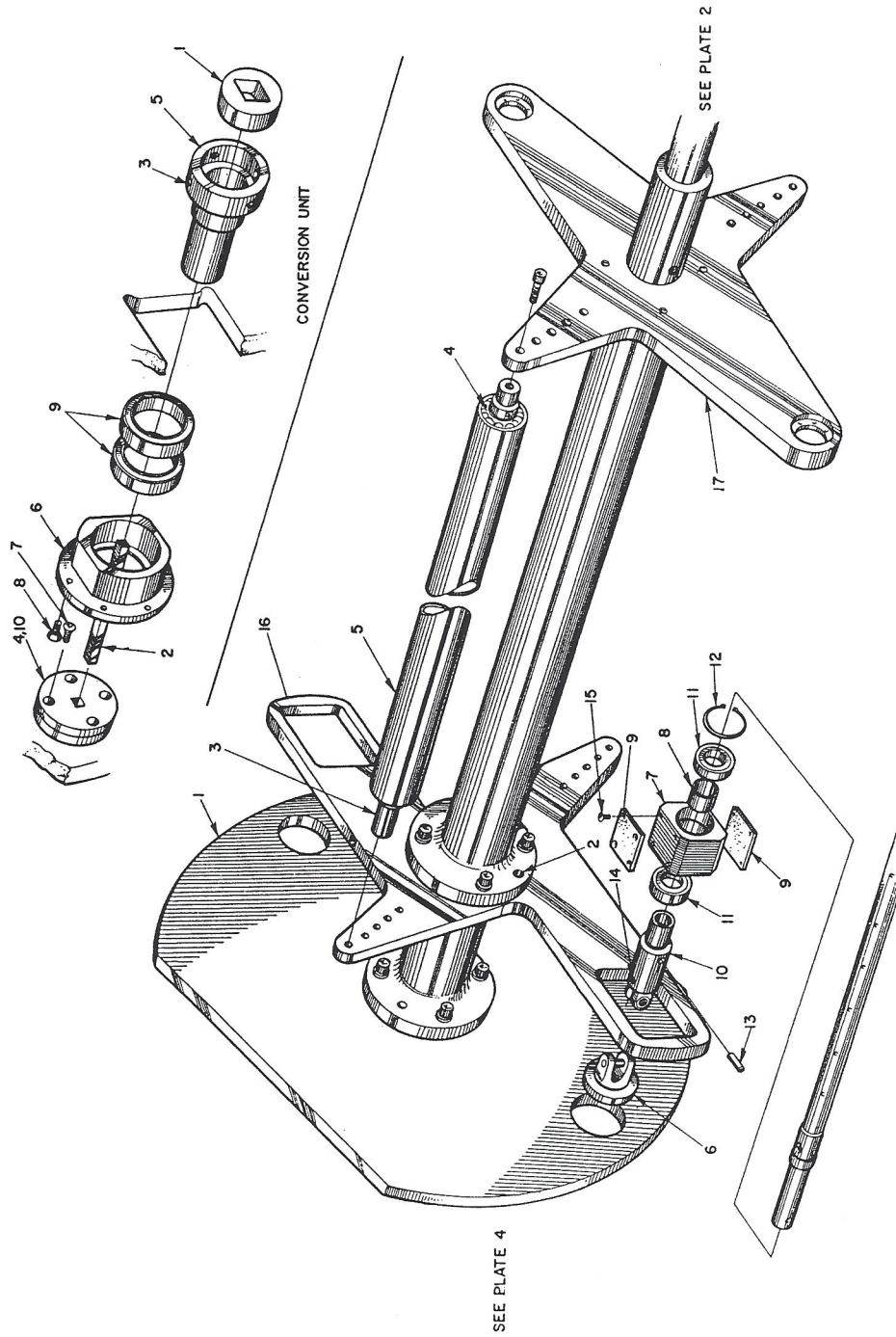
# PLATE 2 R.H. CONTROLS & FRAME



## LIST 2 R.H. CONTROLS & FRAME

Key No.	Description	Part Number
1	Arm, Tailstock Turret	C10068990
2	Frame - R.H. (Single)	D10069033
	Frame - R.H. (Dual)	D10076987
3	Spacer	A10074679
4	Girt	C10067855
5	Support	B10077169
6	Support, Safety	C10074241
7	Button Head Screw	10 - 32 X 1/4
8	Cover	B10075933
9	Flashing Light	8604
		Safety Reset
10	Push Button	1277
		Top Cycle Start
11	Selector Switch	2956
		Top Slitter Out-In
12	Lighted Lens	1929/1820
		Machine Start
13	Selector Switch	2961
		Run-Thread-Up
14	Flashing Light	8604
		Index Fault
15	Push Button	1922
		Machine Stop
16	Push Button	1277
		Bottom Cycle
17	Selector Switch	2956
		Bottom Slitter Out-In
18	Selector Switch	24868
		Counter Start Main-Off-Auto
19	Lighted Selector Switch	13226
		Cut-Auto-Hand
20	Emergency Stop	8420
		Emergency Stop
21	Push Button Station	2776
22	Bell	3901
23	Horn	4776
24	Gong	3864
25	Valve	Use Key No.
26	3" Gauge	Use Key No.
27	Enclosure	Use Key No.
28	Reflector	19631

# PLATE 3 TURRET ASSEMBLY



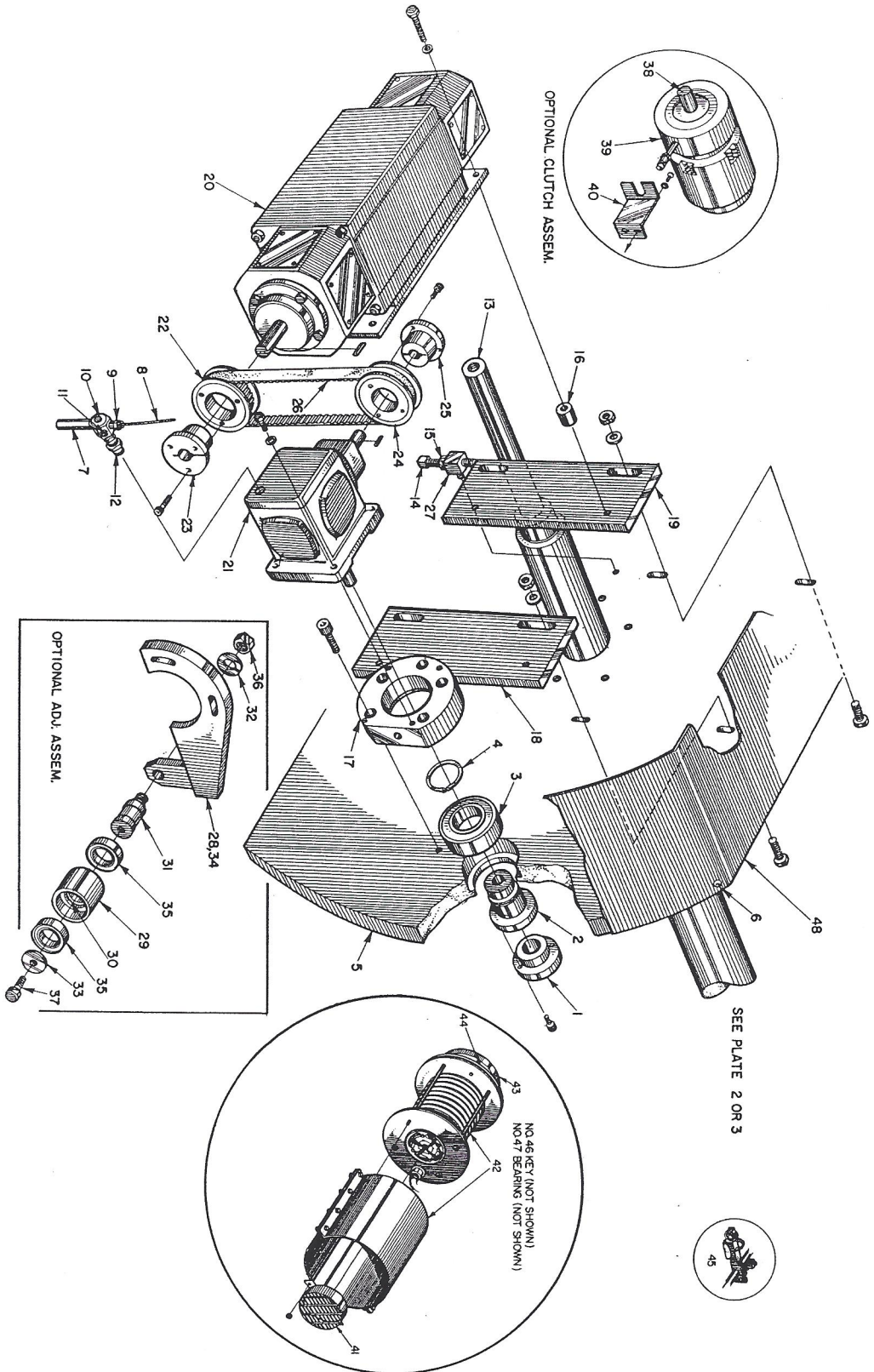
## LIST 3 TURRET ASSEMBLY

Key No.	Description	Part Number
1	Arm, Headstock Turret	C10068989
2	Pin	27233
3	Shaft	A10069155-004
4	Bearing	267
5	Idler Roll	B10000095
6	Hub	B10026858
7	Housing	B10075125
8	Spacer	A10075126
9	Pad	A10075127
10	Shaft, Arbor Drive	B10075128
11	Bearing	133
12	Snap Ring	4918
13	Roll Pin	3/8 X 2 1/2
14	Roll Pin	1/2 X 2 1/2
15	Flat Head Screw	10/24 X 1/2
16	Arm	C10075132
17	Arm	C10075131

## CONVERSION UNIT

Key No.	Description	Part Number
1	Collet (1 1/4 SQ.)	A01000012
2	Shaft (5/8 SQ.)	A01000142
3	Socket Set Screw	3/8 - 16 X 1/2
4	Hub	B01000118
5	Spindle	B10075129
6	Housing	B10075130
7	Flat Head Screw	5/16 - 18 X 3/4
8	Flat Head Screw	3/8 - 16 X 5/8
9	Bearing	133
10	Plunger Ball	2650

PLATE 4 HEADSTOCK DRIVE ASSEMBLY

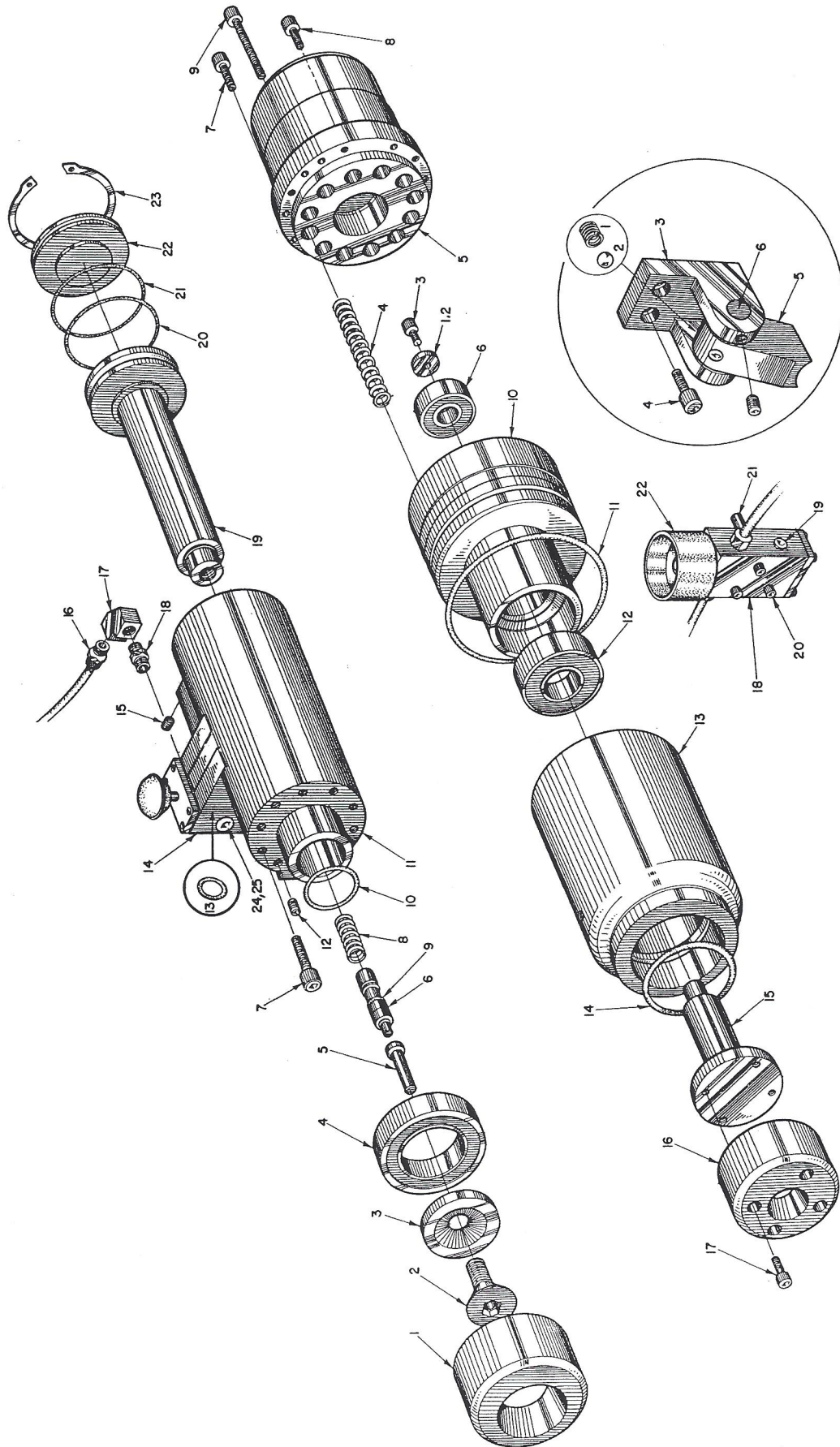




# LIST 4 HEADSTOCK DRIVE ASSEMBLY

Key No.	Description	Part Number
1	Hub, Headstock Drive (1 1/4 SQ.)	B01000118-002
2	Spindle, Headstock	C1006898
3	Bearing, Ball	6969
4	Ring, Retaining	1332
5	Arm, Headstock Turret	C10068989
6	Socket Head Cap Screw	1/4 - 20 X 1/2
7	Counterweight, Vent	A10068985
8	Tubing	1/8 X 6
9	Fitting, Grease	21939
10	Manifold, Rotary	24531
11	Plug, Screw	24533
12	Reducer	1/8 X 1/4
13	Shaft, Turret	Give Model No. & Machine Size
14	Square Head Screw	3/8 - 16 X 3
15	Hex Jam Nut	3/8
16	Spacer	B00060001-016
17	Spacer, Reducer	B10068997
18	Bar, Motor Mounting	A10075956 (Front)
19	Bar, Motor Mounting	A10075965 (Rear)
20	Motor	See Motor
21	Reducer	See Reducer
22	Pulley	922
23	Bushing	536
24	Pulley	944
25	Bushing	582
26	Belt	1069
27	Stud, Adjusting Screw	A10003902
28	Arm	B10077980
29	Pulley	A10077982
30	Spacer	A10077983
31	Shaft	A10077984
32	Washer	B00050001-045
33	Washer	B00050001-024
34	Washer	B00050001-048
35	Bearing	138
36	Elastic Stop Nut	11061
37	Hex Head Cap Screw	3/8 - 16 X 5/8
38	Bushing	27535
39	Clutch	27534
40	Clutch Torque Arm	A10077386
41	Guard	A10070305
42	Collector Ring	23171
43	Collector Mounting Ring	B10068986
44	Stud	A10068983
45	Brush Assembly	27538
46	Key (Not Shown)	281
47	Bearing (Not Shown)	23476
48	Guard	Use Key No.

# PLATE 5 TAILSTOCK ASSEMBLIES



# LIST 5 TAILSTOCK ASSEMBLIES

## TAILSTOCK CYLINDER WITH CLUTCH INTERLOCK DEVICE

Key No.	Description	Part Number
1	Chuck-Tailstock 1 1/4	B10066284
2	Flat Head Screw	A10066283
3	Washer	A10066282
4	Bearing	152
5	Plunger, Valve	A10066289
6	Valve-Two Way	22695
7	Socket Head Cap Screw	1/4 - 20 X 1 1/4
8	Spring	22696
9	"O" Ring	Part of No. 6
10	"O" Ring	6622
11	Cylinder	C10007674
12	Pipe Plug (7/8 Taper)	1/16 - 27
13	"O" Ring	1163
14	Valve	A10009819
15	Pipe Plug (7/8 Taper)	1/16 - 27
16	Hose Fitting	2062 3253, 6450 & 14229
17	Elbow	Use Key No.
18	Valve-Inline	12135
19	Piston	B10034298
20	"O" Ring	3972
21	"O" Ring	6606
22	Cap	A10008004
23	Retaining Ring	6605
24	Pipe Plug 7/8 Taper (Top)	1/4 X 18
25	Pipe Plug - Vented Pipe	A10034342

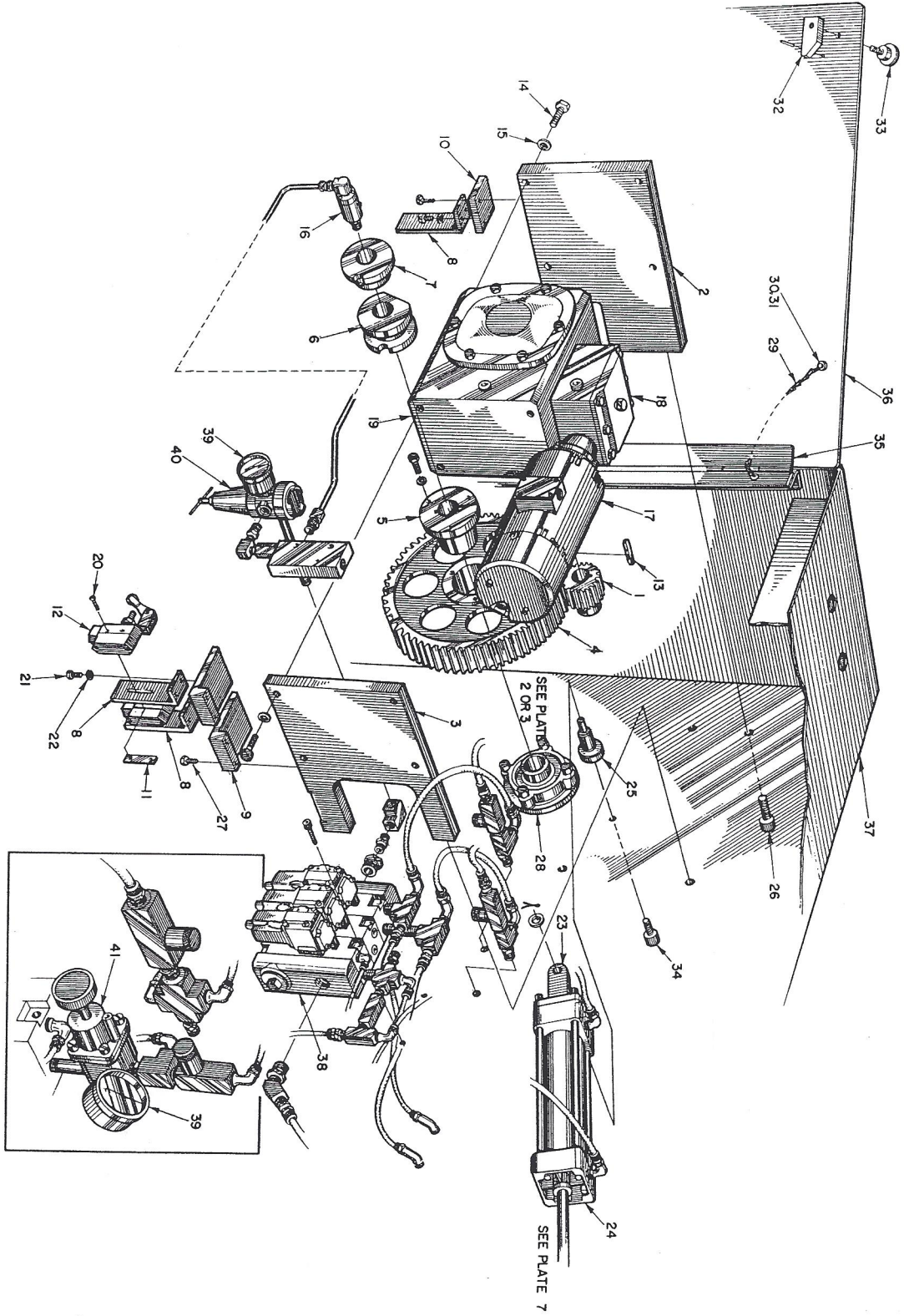
## TAILSTOCK

Key No.	Description	Part Number
1	Shim	A10065772
2	Washer, Flat	B00050001-011
3	Screw	Use Key No.
4	Spring	4585
5	Cylinder Housing	C10065517
6	Bearing	11773
7	Socket Head Cap Screw	Use Key No.
8	Socket Head Cap Screw	Use Key No.
9	Socket Head Cap Screw	1/4 - 20 X 3
10	Piston	C10065516
11	"O" Ring	22345
12	Bearing	22344
13	Housing, Cylinder	C10065518
14	"O" Ring	7526
15	Shaft	C10065519
16	Chuck, Tailstock (1 1/4)	B10068987
17	Socket Head Cap Screw	Use Key No.
18	Valve	19876
19	Plug	1/4 NPT
20	Socket Head Cap Screw	1/4 - 20 X 2 1/2
21	Stand-Off	A10003186
22	Guard	26642

## SAFETY LATCH ASSEMBLY

Key No.	Description	Part Number
1	Spring	3/8 OD X .031 X 1/2 Wire
2	Steel Ball	.375 Dia.
3	Clevis	B100-983-1
4	Socket Head Cap Screw	1/4 - 20 X 1/2
5	Latch	A100-997
6	Pin	B100-983-2

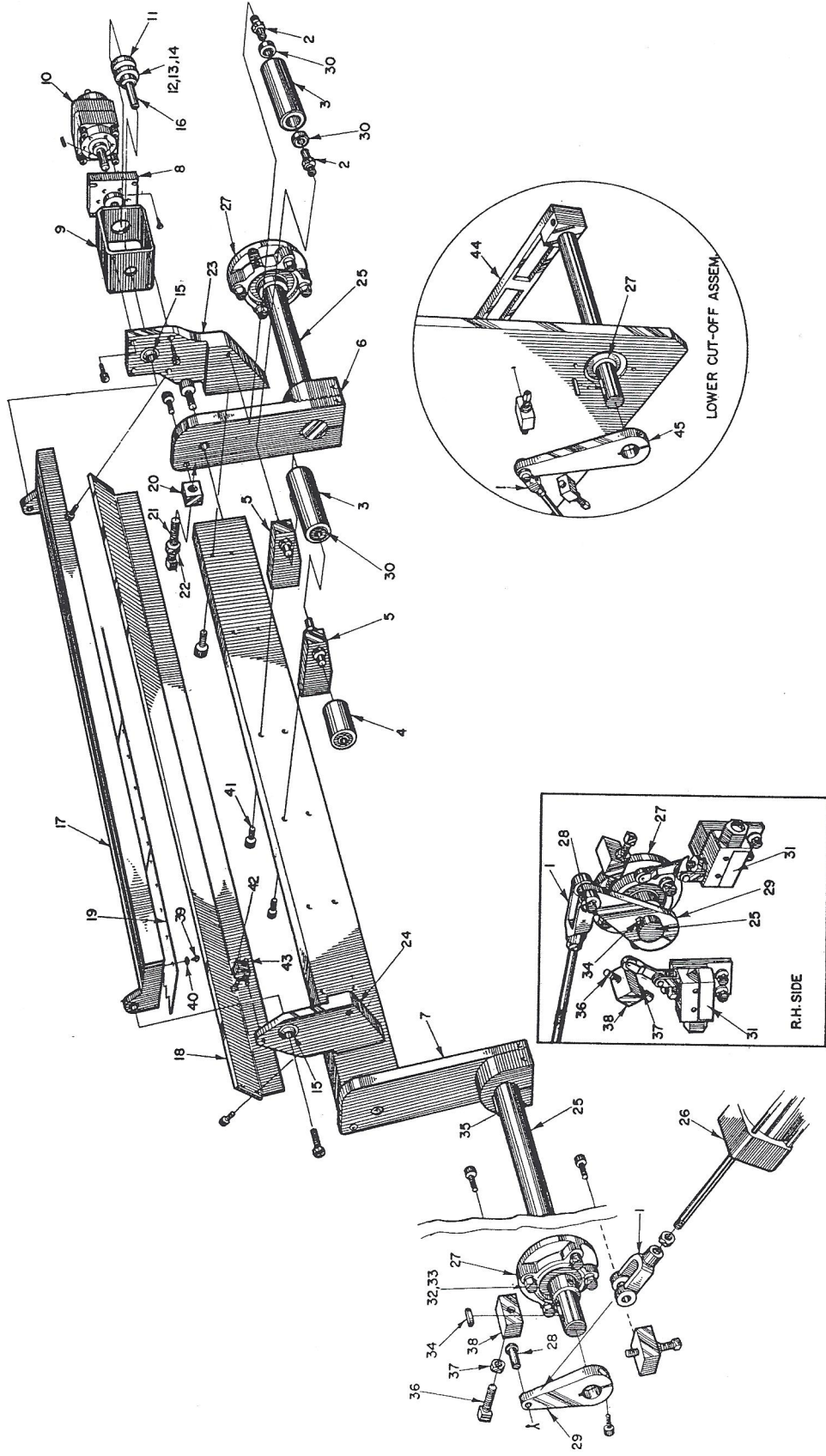
PLATE 6 TURRET DRIVE



# LIST 6 TURRET DRIVE

Key No.	Description	Part Number
1	Pinion	A10000099
2	Support	B10068761
3	Support	C10068762
4	Gear	B10000091
5	Bushing	6543
6	Dual Cam	B10005889
7	Cam	B10000351
8	Bracket	B10068763
9	Spacer	A10068765
10	Spacer	A10068764
11	Plate Nut	A10034230
12	Limit Switch	2941
13	Key	23377
14	Hex Head Bolt	1/2 - 13 X 1 5/8
15	Washer	1/2
16	Rotary Union	2357
17	Motor	See Motor
18	Reducer	See Reducer
19	Gear Box	See Gear Box
20	Button Head Screw	6 - 32 X 1 1/2
21	Socket Head Cap Screw	1/4 - 20 x 3/4
22	Washer	1/4
23	Eye	3063
24	Air Cylinder	B10068845
25	Stud	B1000169-005
26	Socket Head Cap Screw	3/8 - 16 X 1 1/2
27	Hex Head Cap Screw	1/4 - 20 X 1 5/8
28	Bearing	23476
29	Chain	No. 8
30	Button Head Screw	8 - 32 X 3/8
31	Nut	8 - 32
32	Door Latch L.H.	A00040001-002
	Door Latch R.H.	A00040001-001
33	Knob	2545
34	Socket Head Cap Screw	3/8 - 16 X 1 1/4
35	Hinge (State single or double)	2532
36	Door (Dual)	B10069160
	Door (Single)	B10076983
37	Enclosure (R.H.-Dual)	C10069158
	Enclosure (R.H.-Single)	B10076983
38	Manifold	26640
39	Gage 2"	2311
40	Regulator	Use Key No.
41	Regulator	2309

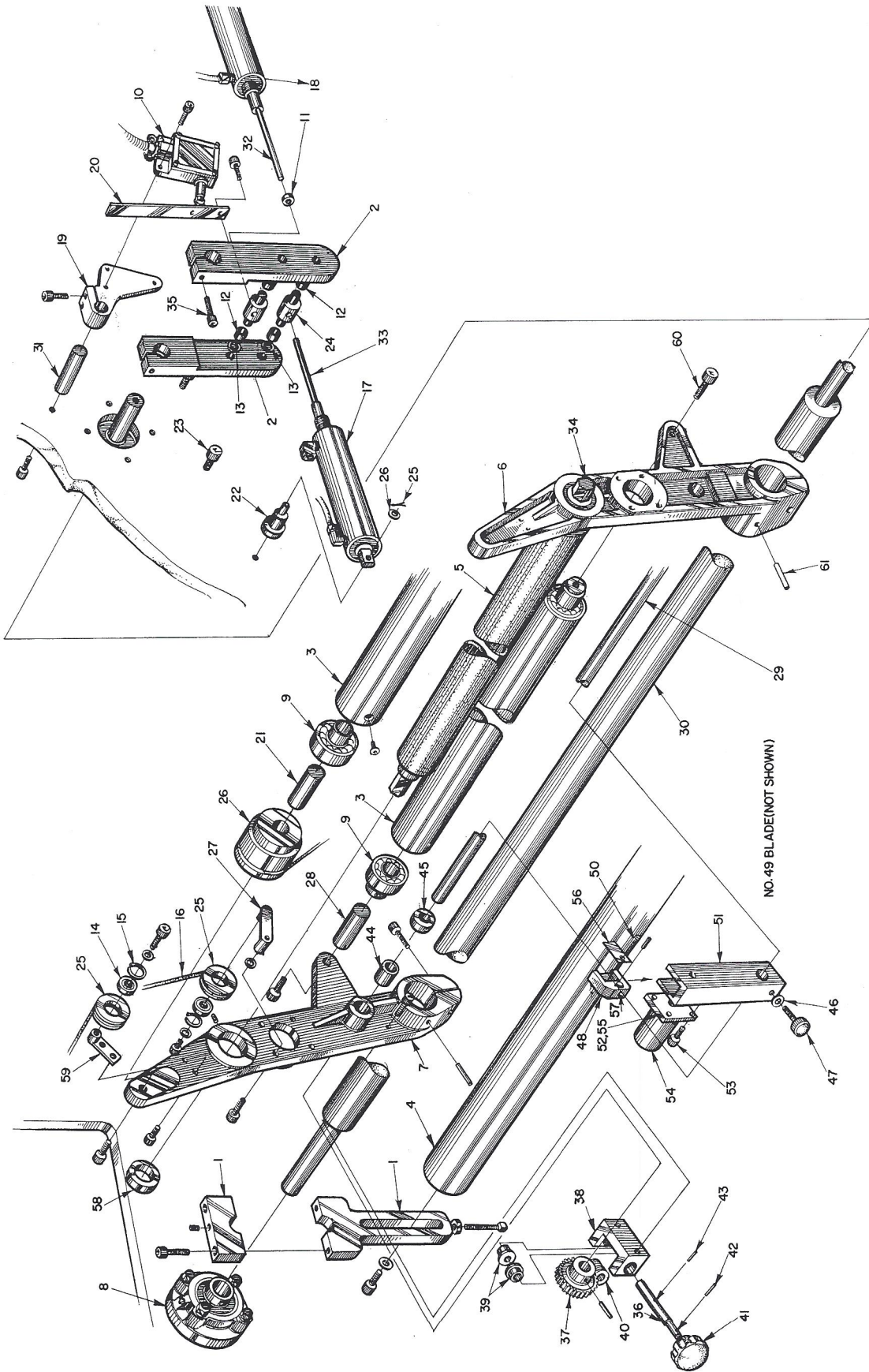
# PLATE 7 CUT-OFF ASSEMBLY



# LIST 7 CUT-OFF ASSEMBLY

Key No.	Description	Part Number
1	Clevis	B10068831
2	Stub Shaft	A10000063
3	Roll (10')	B10068832
4	Roll (5')	B10068833
5	Mounting Block	A10000821
6	Cut-Off Arm (R.H.)	C10068921
7	Cut-Off Arm (L.H.)	C10068922
8	Spacer	C10069332
9	Mount	B10069330
10	Air Cylinder	23474
11	Coupling	B10069331
12	Coupling	24601
13	Coupling, Sleeve	24603
14	Key	426
15	Bearing, Spherical	356
16	Shaft	A10066656
17	Bar, Blade Mounting	C10077893
18	Guard	B10068848
19	Blade 15" lg.	B10075946
20	Stud Adjusting Screw	A10003902
21	Square Head Screw	3/8 - 16 X 1 1/2
22	Hex Jam Nut	3/8 - 16
23	Plate, Cut-Off R.H.	C10068849
24	Plate, Cut-Off L.H.	C10068850
25	Shaft	B10068845
26	Air Cylinder	23474 Upper
	Air Cylinder	23473 Lower
27	Bearing	284
28	Pin, Clevis	4626
29	Arm, Pivot	B10068924
30	Bearing	2749
31	Limit Switch	2941
32	Hex Head Screw	7/16 - 14 X 3
33	Hex Nut	7/16 - 14
34	Key	430
35	Key	5951
36	Square Head Screw	1/2 - 13 X 2
37	Hex Jam Nut	1/2 - 13
38	Stud	A10068836
39	Button Head Screw	1/4 - 20 X 3/8
40	Lock Washer	1/4
41	Socket Head Cap Screw	1/4 - 20 X 3/4
42	Adjusting Stud	A10077890
43	Adjusting Screw	1/4 - 20 X 1 1/2
44	Cut-Off Arm (R.H.)	C10068840
	Cut-Off Arm (L.H.)	C10068841
45	Arm Pivot Cylinder	B10068844

# PLATE 8 LAY-ON & SLITTER ASSEMBLY

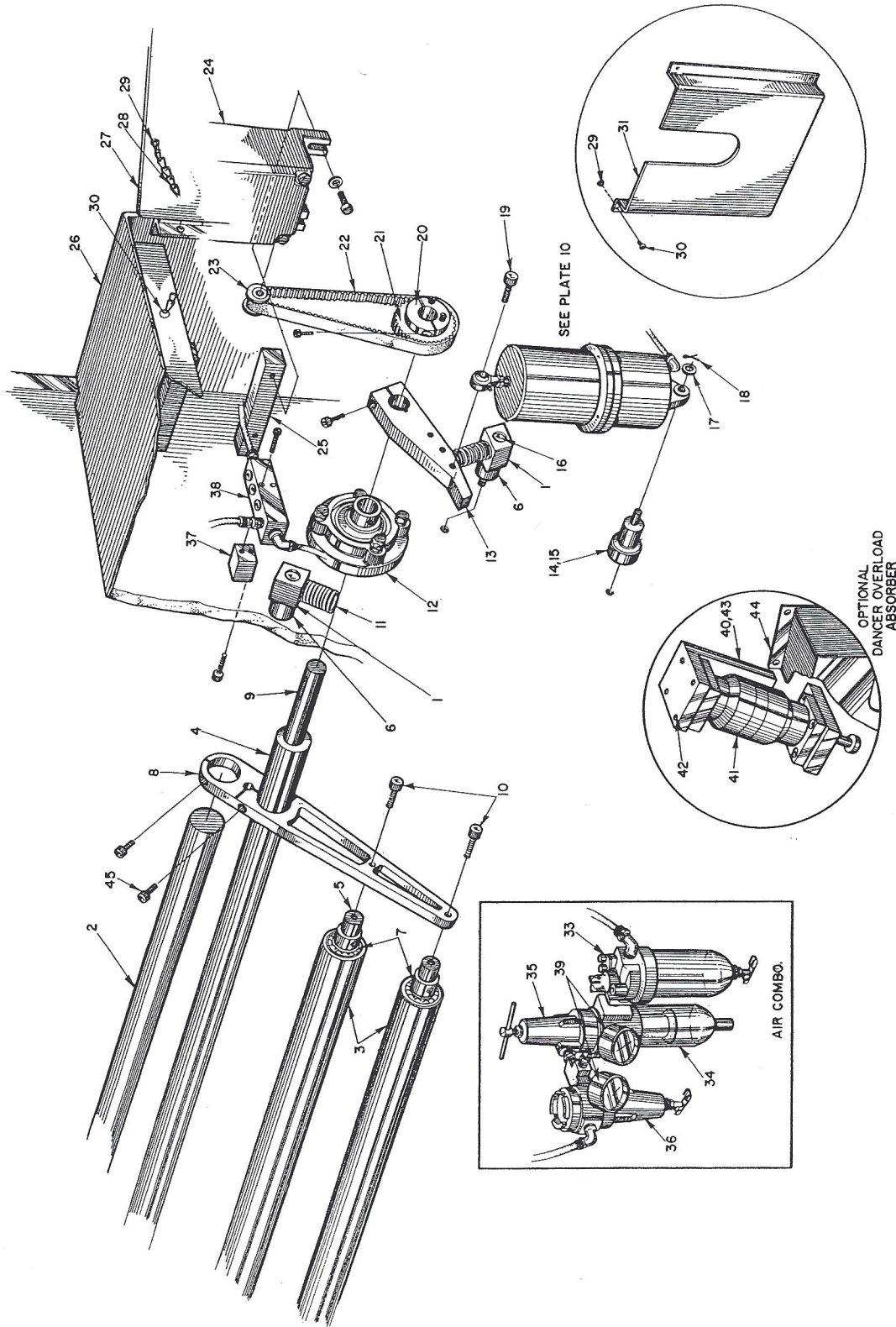




## LIST 8 LAY-ON & SLITTER ASSEMBLY

Key No.	Description	Part Number	Key No.	Description	Part Number
1	Arm, Counterweight	B10002365	31	Shaft L.S. Pivot	B00060002-026
2	Link, Actuator	B01240004	32	Rod Extension	A01000471
3	Roll, Idler	B10000095	33	Rod Extension	A01000471
4	Counterweight	A10076991	34	Ball Joint	A01000174
5	Bowed Roll (3 1/2)	B10052014	35	Socket Head Cap Screw	3/8 - 16 X 1
6	Lay-On Arm (R.H.)	D10069060	36	Worm Shaft	A10014181
7	Lay-On Arm (L.H.)	D10069061	37	Worm Gear	A10014182
8	Bearing	293	38	Housing	B10069065
9	Bearing	267	39	Bronze Bearing	461
10	Limit Switch	2939	40	Worm	6597
11	Collar	3/8 Bore	41	Knob	2541
12	Bearing	273	42	Roll Pin	1/8 X 1
13	Washer, Brass	3375	43	Roll Pin	3/16 X 1 3/4
14	Bearing	9	44	Bronze Bearing	24535
15	Retaining Ring	1261	45	Collar	1" Bore
16	Round Belting & Connecting Link	5961	46	Flat Washer	B0005001-026
17	Air Cylinder Type C	2222	47	Knob	2548
18	Air Cylinder Type A	2223	48	Blade Holder	B10069315
19	Bracket, Limit Switch	B01000496	49	Razor Blade	2750
20	Arm	A10003462	50	Socket Head Cap Screw	10 - 32 X 3/8
21	Stub Shaft	A10000078	51	Housing	C10069316
22	Cylinder Mounting Stud	B01000169-008	52	Plate	B10069314
23	Socket Head Cap Screw	1/2 - 13 X 1	53	Socket Head Cap Screw	10 - 32 X 1/2
24	Shaft, Cylinder Pivot	A01000862	54	Actuator - 90°	24605
25	Idler Sheave	A01000987	55	Socket Head Cap Screw	M5 X 10 lg.
26	Lay-On Roll Sheave	B01000773	56	Nut-Blade Clamping	A10025333
27	Idler Arm	A01000988	57	Set Screw	10 - 32 X 1/4
28	Stub Shaft 1 1/2 X 2	A10000023	58	Ball Joint	A01000174
29	Shaft, Slitter	A100069064	59	Idler Adjusting Support	A10072060
30	Shaft, Lay-On	B10000093	60	Socket Head Cap Screw	3/8 - 16 X 1 1/2
			61	Roll Pin	3/16 X 3 1/2

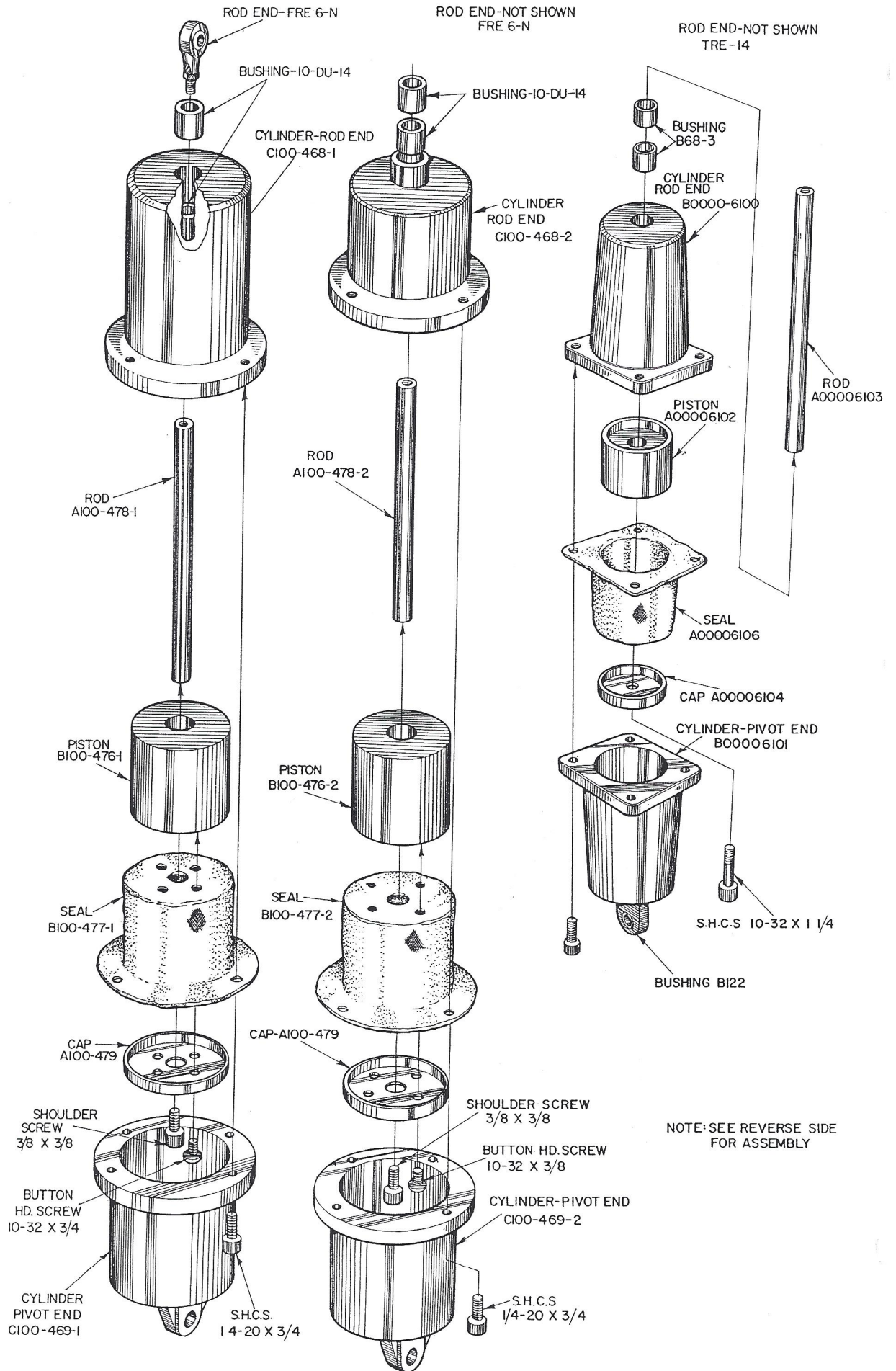
# PLATE 9 DANCER ASSEMBLY



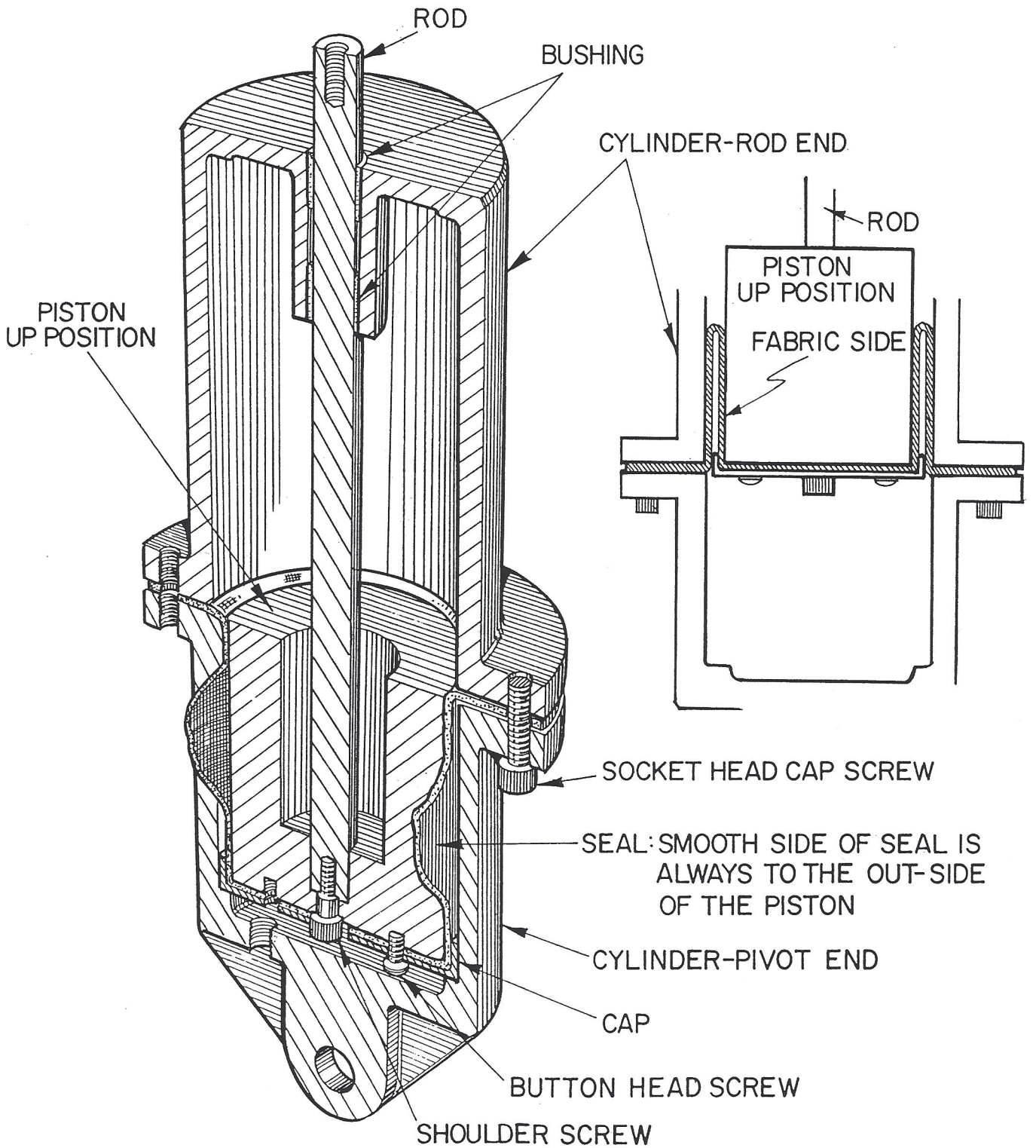
# LIST 9 DANCER ASSEMBLY

Key No.	Description	Part Number
1	Bracket	A01000171
2	Counterweight	A10000094
3	Idler Roll	B10000095
4	Shaft	B10069148 or B10077155
5	Stub Shaft	A10000023
6	Spacer	B00060001
7	Bearing	267
8	Arm	B01000207
9	Key	5082
10	Socket Head Cap Screw	1/2 - 13 X 1 1/2
11	Spring	4539
12	Bearing	293
13	Arm	B01000058
14	Stud	B01000169
15	Socket Head Cap Screw	3/8 - 16 x 1 1/2
16	Socket Head Cap Screw	1/2 - 13 X 3 1/2
17	Washer	17/32 I.D.
18	Cotter Pin	3/32 x 1
19	Socket Head Cap Screw	3/8 - 16 x 1 1/4
20	Hub	A10000166
21	Pulley	A10000167
22	Belt	210-L0-37
23	Pulley	28 x L0-37
24	Potentiometer Control	C10024353
25	Mounting Bar	A10000304
26	Enclosure	Use Key No.
27	Door	Use Key No.
28	Chain	No. 8
29	Nut	8 - 32
30	Button Head Screw	8 - 32 x 3/8
31	Instruction Holder	B10000145
32	Air Combo	2117
33	Air Combo	2117
34	Air Combo	2117
35	Air Combo	2117
36	Air Combo	2117
37	Spacer	A01000323
38	Manifold	A1000322
39	Gage - 2"	2311
40	Mount	B10077509
41	Shock Absorber	27541
42	Socket Head Cap Screw	5/16 - 18 X 1
43	Socket Head Cap Screw	1/2 - 13 X 1
44	Guard	Use Key No.
45	Socket Head Cap Screw	3/8 - 16 X 1 3/8

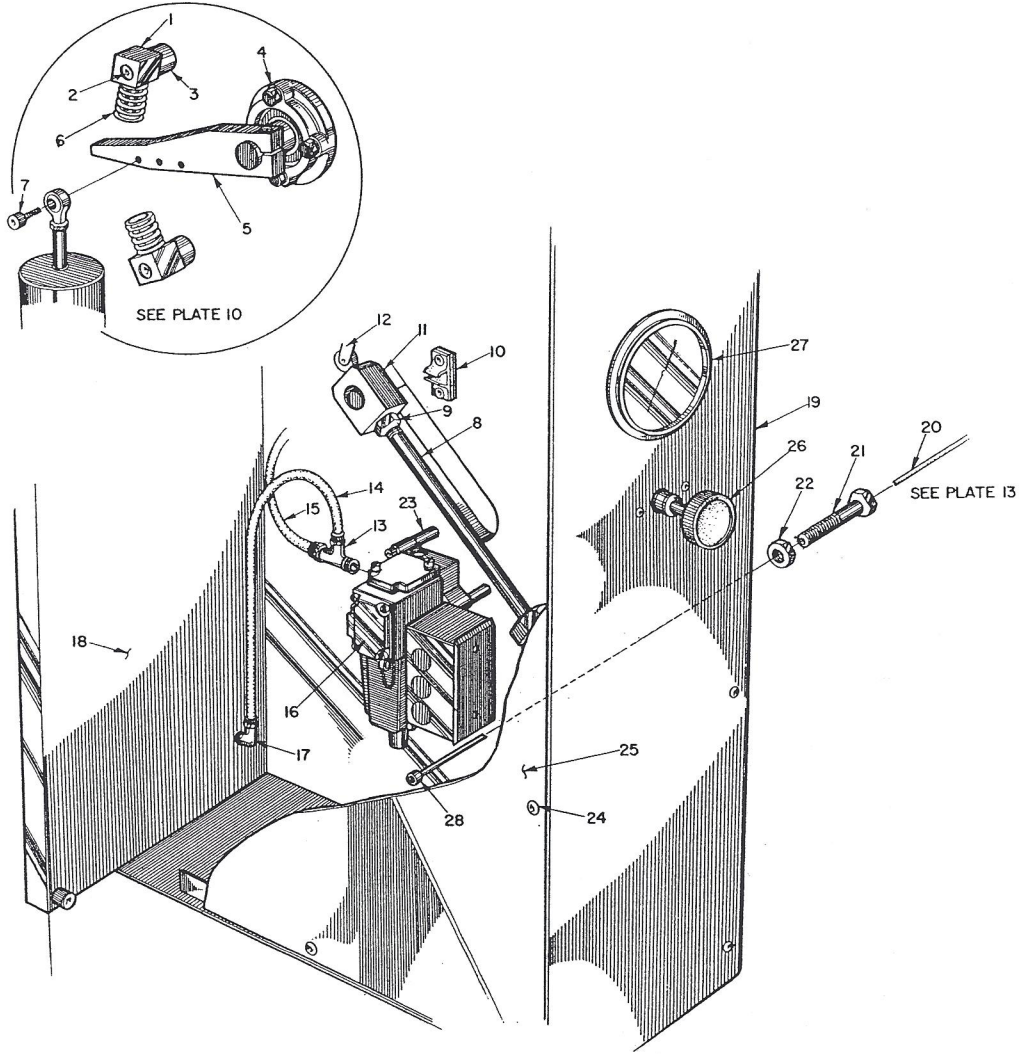
# PLATE & LIST 10 BELLOFRAM ASSEMBLY



# DANCER TENSION CYLINDER-ASSEMBLY



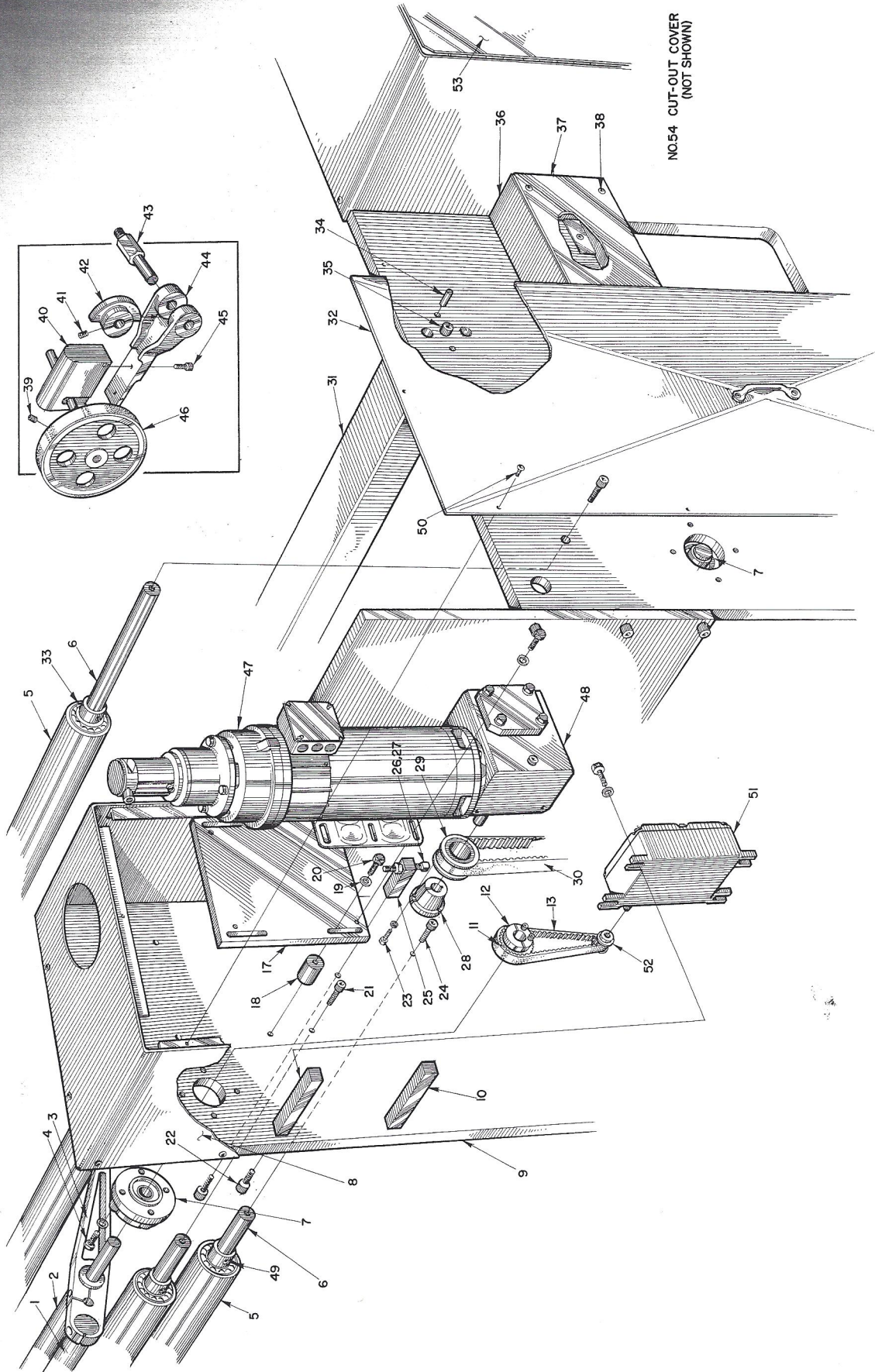
# PLATE 11 R.H. NIP ROLL ASSEMBLY



# LIST 11 R.H. NIP ROLL ASSEMBLY

Key No.	Description	Part Number
1	Bracket	A01000171
2	Socket Head Cap Screw	1/2 - 13 X 3 1/2
3	Spacer	B00060001
4	Bearing	293
5	Arm	B01000058
6	Spring	4539
7	Socket Head Cap Screw	3/8 - 16 X 1 1/4
8	Air Cylinder	6432
9	Nut	Use Key No.
10	Clip	Use Key No.
11	Adapter Nip Cylinder	A01000409
12	Limit Switch	2941
13	"T" Fitting	Use Key No.
14	Tubing	Use Key No.
15	Tubing	Use Key No.
16	Valve	See Valve
17	Elbow	Use Key No.
18	Plate R.H.	D10069219
19	Enclosure	D10069220
20	Wire Rope	8221
21	Screw, Cable Adjusting	A10052027
22	Jam Nut, Hex	1/2 - 13
23	Stand-Off	A10003186
24	Button Head Screw	1/4 - 20 X 1/2
25	Door	D10069222
26	Regulator	2313
27	Gauge	2258
28	Stop Sleeve	8002

# PLATE 12 L.H. NIP ROLL & DRIVE ASSEMBLY

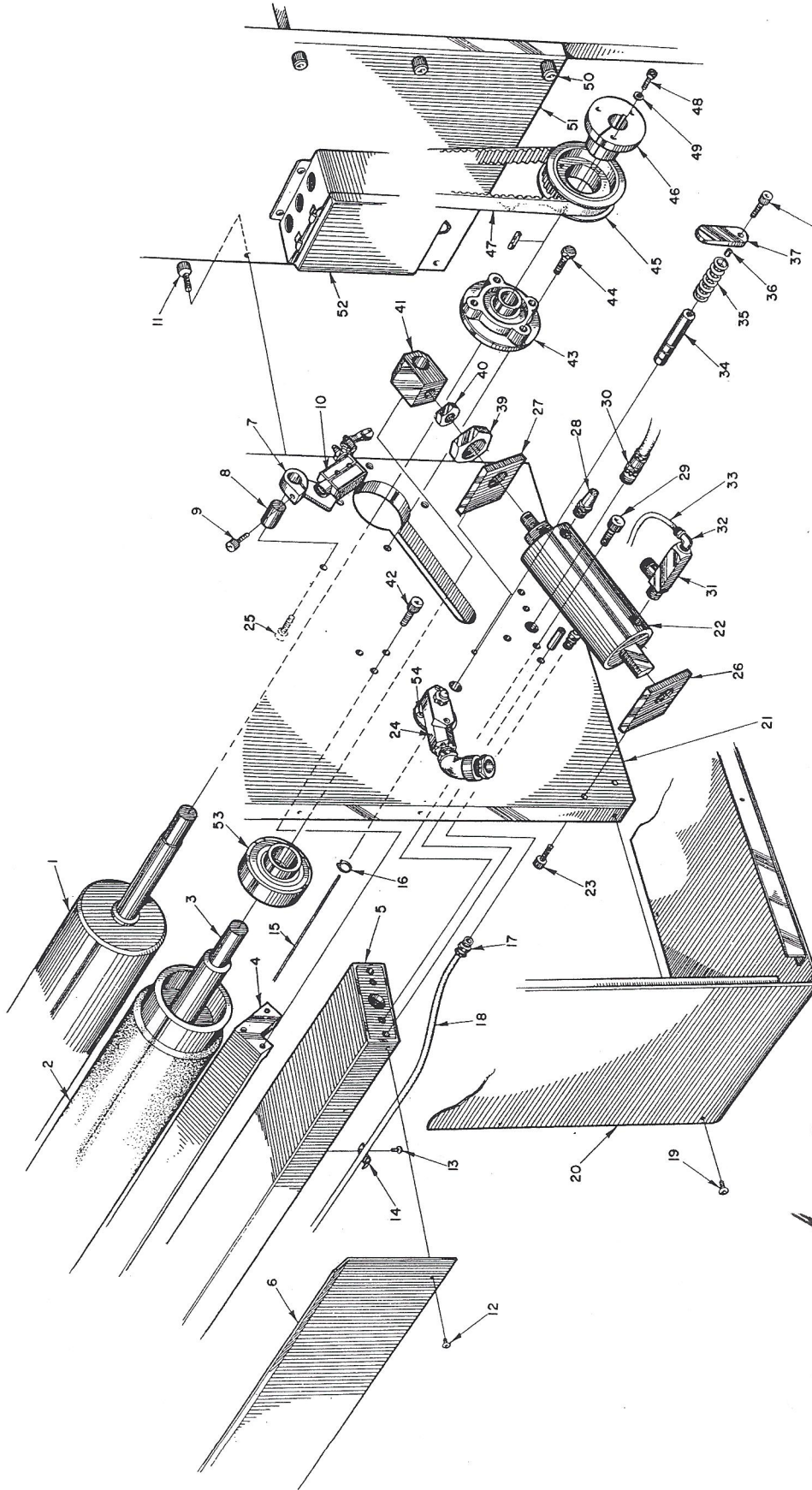




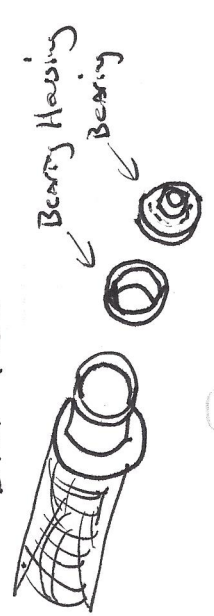
# LIST 12 L.H. NIP ROLL & DRIVE ASSEMBLY

Key No.	Description	Part Number
1	Counterweight	B10069212
2	Shaft	B10069211
3	Arm 12"	B01000113
4	Hex Head Bolt	7/16 - 14 X 3
5	Idler Roll	B10000095
6	Shaft	B10069213
7	Bearing	293
8	Enclosure	D10069220
9	Plate L.H.	D10069219-002
10	Mounting Bar	A10000304
11	Pulley	A10000167
12	Hub	A10000166
13	Belt	210-L0-37
14	Pulley	28-L0-37
15	Rotary Mechohm	311-36-0
16	Bearing	293
17	Motor Mounting Plate	B10075648
18	Spacer	B00060001-054
19	Washer	5/16
20	Hex Head Bolt	5/16 - 18 x 1 1/4
21	Socket Head Cap Screw	Use Key No.
22	Socket Head Cap Screw	Use Key No.
23	Hex Head Bolt	Use Key No.
24	Socket Head Cap Screw	Use Key No.
25	Block Adjusting Screw	A10075649
26	Square Head Set Screw	3/8 - 16 x 2 1/2
27	Hex Jam Nut	3/8 - 16
28	Bushing	504
29	Pulley	21681
30	Belt	26647
31	Girt	C10069217
32	Door	D10069222
33	Bearing	267
34	Dowel Pin	Use Key No.
35	Socket Head Cap Screw	Use Key No.
36	Enclosure	B10070515
37	Cover	B10070514
38	Button Head Screw	1/4 - 20 x 1/2
39	Socket Set Screw	1/4 - 20 x 1/4
40	Counter	ES9513
41	Socket Set Screw	1/4 - 20 x 1/4
42	Collar	1597
43	Support	B100511
44	Plate	BB1072xC2-0119-300
45	Socket Head Cap Screw	10 - 32 X 1/2
46	Wheel	21547
47	Motor	See Motor
48	Reducer	See Reducer
49	Bearing	267
50	Button Head Screw	1/4 - 20 X 1/2
51	Rotary Mechohm	311-36-D
52	Pulley	28xL037
53	Door L.H.	Single B10076984 Dual B10069159
54	Cover-Cut-Out/Not Shown	B10069161

PLATE 13 L.H. NIP ROLL ASSEMBLY



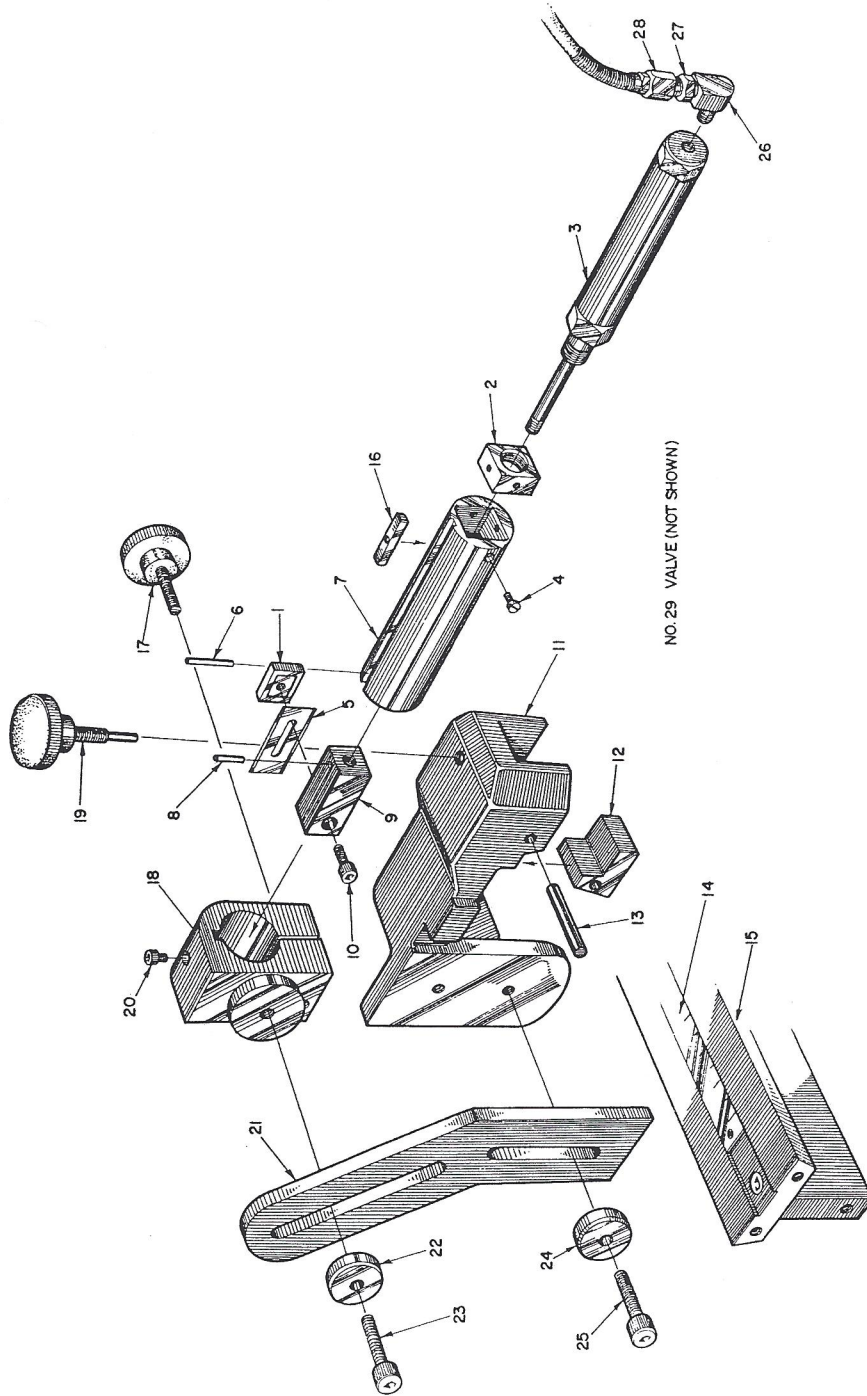
Bearing Housing \$ 185.03 ea  
 B1010 4753



# LIST 13 L.H. NIP ROLL ASSEMBLY

Key No.	Description	Part Number
1	Chrome Roll (5 3/8)	C10069216
2	Rubber Roll (5 3/8)	C01230016
3	Shaft	A10000082
4	Girt	B10077157
5	Girt	C10069217
6	Guard	B10069214
7	Bracket, Limit Switch	B10000800
8	Stand-Off	B00060002-026
9	Socket Head Cap Screw	3/8 - 16 x 1 1/4
10	Limit Switch	2941
11	Socket Head Cap Screw	Use Key No.
12	Button Head Screw	1/4 - 20 x 1/2
13	Button Head Screw	1/4 - 20 x 1/2
14	Wire Clip	Use Key No.
15	Wire Rope	8221
16	Snap Ring	225
17	Fitting	Use Key No.
18	Tubing	Use Key No.
19	Button Head Screw	1/4 - 20 x 1/2
20	Enclosure	D10069220
21	Plate (L.H.)	D10069219
22	Air Cylinder	6432
23	Socket Head Cap Screw	Use Key No.
24	Limit Switch	2945
25	Button Head Screw	1/4 - 20 x 3/4
26	Cylinder Mount	A10069210
27	Cylinder Mount	A10069210
28	Muffler	26010
29	Socket Head Cap Screw	Use Key No.
30	Elec. Fitting	Use Key No.
31	Valve	2398
32	Elbow	Use Key No.
33	Tubing	Use Key No.
34	Rod	A10052142
35	Spring	4546
36	Stop Sleeve	8002
37	Pad	A00002224
38	Socket Head Cap Screw	3/8 - 16 x 7/8
39	Nut	Use Key No.
40	Nut	Use Key No.
41	Adapter, Nip Cylinder	A01000409
42	Socket Head Cap Screw	Use Key No.
43	Bearing	295
44	Hex Head Bolt	7/16 - 14 X 3
45	Pulley	4294
46	Bushing	539
47	Belt	26647
48	Hex Head Bolt	Use Key No.
49	Washer	Use Key No.
50	Socket Head Cap Screw	Use Key No.
51	Plate, Winder Mounting	C10069215
52	Electrical Box	Give Dimensions
53	Bearing	243
54	Socket Head Cap Screw	10 - 32 x 3/4

# PLATE 14 RETRACTABLE TRIM ASSEMBLY



# LIST 14 RETRACTABLE TRIM ASSEMBLY

Key No.	Description	Part Number
1	Nut, Blade Clamping	A10025333
2	Block, Cylinder Mounting	A10031475
3	Air, Cylinder	10191
4	Socket Head Cap Screw	6-32 x 1/4
5	Blade	2730
6	Roll Pin	1/8 x 1 1/4
7	Housing	B10031477
8	Roll Pin	3/32 x 3/4
9	Holder	B10031478
10	Socket Head Cap Screw	10-32 x 5/8
11	Slitter - Dovetail Mounting (L.H.)	C01010148
	Slitter - Dovetail Mounting (R.H.)	C01010148-002
12	Clamp	A01010160
13	Pin	1/4 x 2 1/2
14	Scale	B04180484
15	Dovetail Bar	C10069218
16	Key	A10031476
17	Knob	2548
18	Holder	B10069275
19	Knob	A10000284
20	Socket Head Cap Screw	10 -32 x 5/8
21	Arm	C01010149
22	Washer	B00050001-072
23	Socket Head Cap Screw	1/4 - 20 x 1
24	Washer	B00050001-072
25	Socket Head Cap Screw	1/4 - 20 x 1
26	Fitting	Use Key No.
27	Fitting	Use Key No.
28	Fitting	Use Key No.
29	Valve (Not Shown)	6684



# LIST 15 TAPER TENSION ASSEMBLY (OPTIONAL)

Key No.	Description	Part Number
1	Sleeve	A01000238
2	Plug	A01000242
3	Bushing	A01000248
4	Bushing	A01000249
5	Bushing	A01000250
6	Bushing	A01000251
7	Connecting Rod, L.H.	A10022025
8	Rod, Eye, L.H.	A10022026
9	Nut	A01000277
10	Knob	A01000490
11	Plunger	A10001662
12	Bracket	A10001716
13	Cam	A10056486
14	Cam	A10008958
15	Flexible Shaft	3603
16	Button Head Cap Screw	10-32 UNF x 5/8 lg.
17	Tubing	1/2 OD
18	Grease Fitting	1493
19	Washer	B00050001-058
20	Washer	B00050001-011
21	Washer	B00050001-012
22	Socket Head Set Screw	1/4-20 x 5/16 lg.
23	Arm	B10001664
24	Regulator	B10077333
25	Bracket	B10015902
26	Socket Head Cap Screw	1/4-20 x 1" lg.
27	Socket Head Cap Screw	3/8-16 x 1 1/2 lg.
28	Socket Head Shoulder Screw	3/8 Dia. x 5/8 SH.
29	Socket Head Shoulder Screw	1/2 Dia. x 7/8 SH.
30	Bracket	C10001671-003
31	Socket Head Shoulder Screw	1/2 Dia. x 1 1/4 SH
32	Roll Pin	1/8 Dia. x 1" lg.
33	Hex Nut	1/4-20 UNC
34	Socket Head Shoulder Screw	1/2 Dia. x 1 SH.
35	Bushing	3942
36	Gauge, 3 1/2 Face	6596
37	Cam Follower	228
38	"T" Nut	3408
39	Spring	4560
40	Cotter Pin	.048 Dia. x 1 1/4 lg.
41	Link	4220
42	Bellville Spring Washer	4795
43	Collar	SC 37
44	Collar	SC 62



Gloucester Engineering Co., Inc.  
Blackburn Industrial Park / P.O. Box 900  
Gloucester, Massachusetts 01930 U.S.A.  
Telephone [617] 281-1800 / Telex 940-333

A **Battenfeld** COMPANY