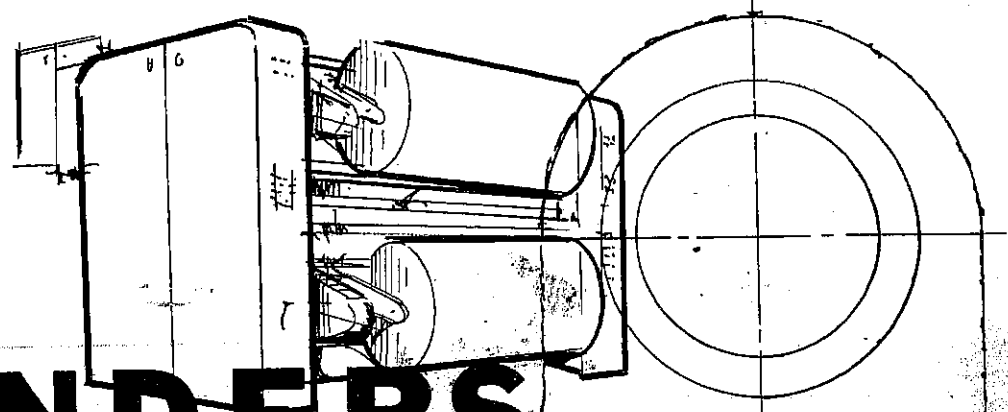


Ray, S.
13 Winder

PARTS CATALOG for



WINDERS from GLOUCESTER ENGINEERING!

MODEL

117, 123, **124**, 125, 126
130, 131, 132 & 143

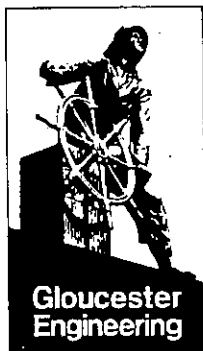
SERIAL # 7575-1

NOTE:

THIS CATALOG IS DESIGNED TO COVER MAJOR ASSEMBLIES - IT MAY BE USED FOR
MACHINES NOT LISTED ABOVE

ISSUED UNDER CONTROL NUMBER

FOR THE PURPOSE OF UP-DATING MATERIAL



GLOUCESTER ENGINEERING CO., INC.

18 Sargent Street, Gloucester, Massachusetts 01930 USA
Telephone 281-1800 Area Code 617
TELEX 94-6524

EUROPEAN SUBSIDIARY
GLOENCO LIMITED
Berry Hill Industrial Estate
Droitwich, Worcestershire, England
Telephone 0905-7-3644
TELEX 338-484

ORDERING INSTRUCTIONS

TO ORDER GIVE PLATE NUMBER, PART NUMBER, QUANTITY, DESCRIPTION AND SERIAL NUMBER OF MACHINE.
FOR PARTS NOT SHOWN GIVE DESCRIPTION USING CLOSEST IDENTIFIED ITEM.

EXAMPLE: DECAL ATTACHED TO TANK COVER NUMBER 145.

SERIAL NO. _____

WRITE IN YOUR SERIAL NUMBER

The parts are positioned in the same basic areas as in the machines. Stripping and assembling are made more accessible, and recognition of parts is also easier.

The parts are illustrated individually to allow the fabrication of the machines to be comprehensive and to present individual parts more advantageously. When a part is ordered, another part may be sent with it. This is to insure competent repair, which in our opinion, would not be possible without the additional part.

Adjustments will be required for some parts in order that the part fit properly to your particular specifications, i.e., machining, drilling, grinding.

Gloucester Engineering Co., Inc. is constantly updating its machinery. Therefore, there may be instances where parts may vary.

NOTE:

DO NOT OPERATE THIS MACHINE WITH-OUT SAFETY DEVICES INCLUDING GUARDS AND COVERS IN THEIR PROPER POSITION.

TELEX 94-6524

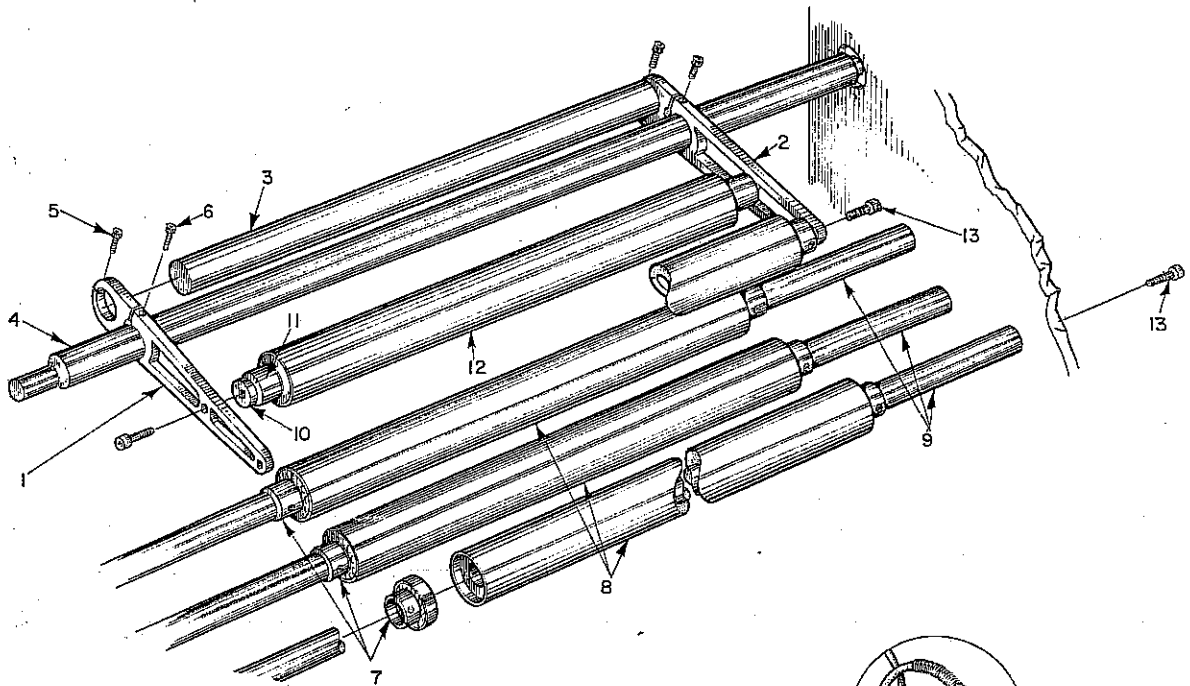
= U S A

TELEX 338-484

= ENGLAND



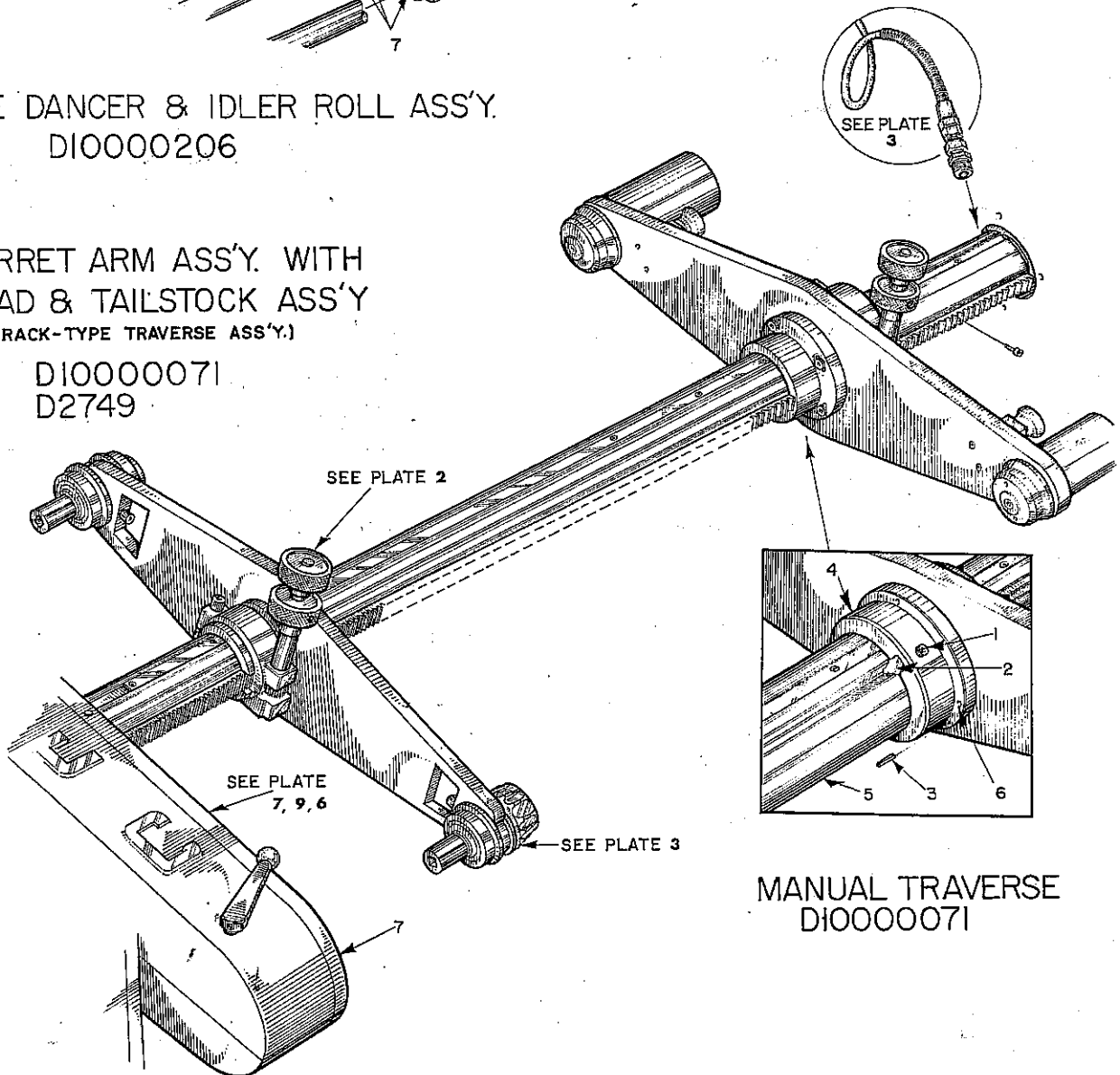
PLATE WC-1



DOUBLE DANCER & IDLER ROLL ASS'Y.
D10000206

TURRET ARM ASS'Y. WITH
HEAD & TAILSTOCK ASS'Y.
(RACK-TYPE TRAVERSE ASS'Y.)

D10000071
D2749



MANUAL TRAVERSE
D10000071

**MANUAL TRAVERSE ASSY.
TURRET ARM ASSY. WITH HEAD AND TAILSTOCK ASSY.**

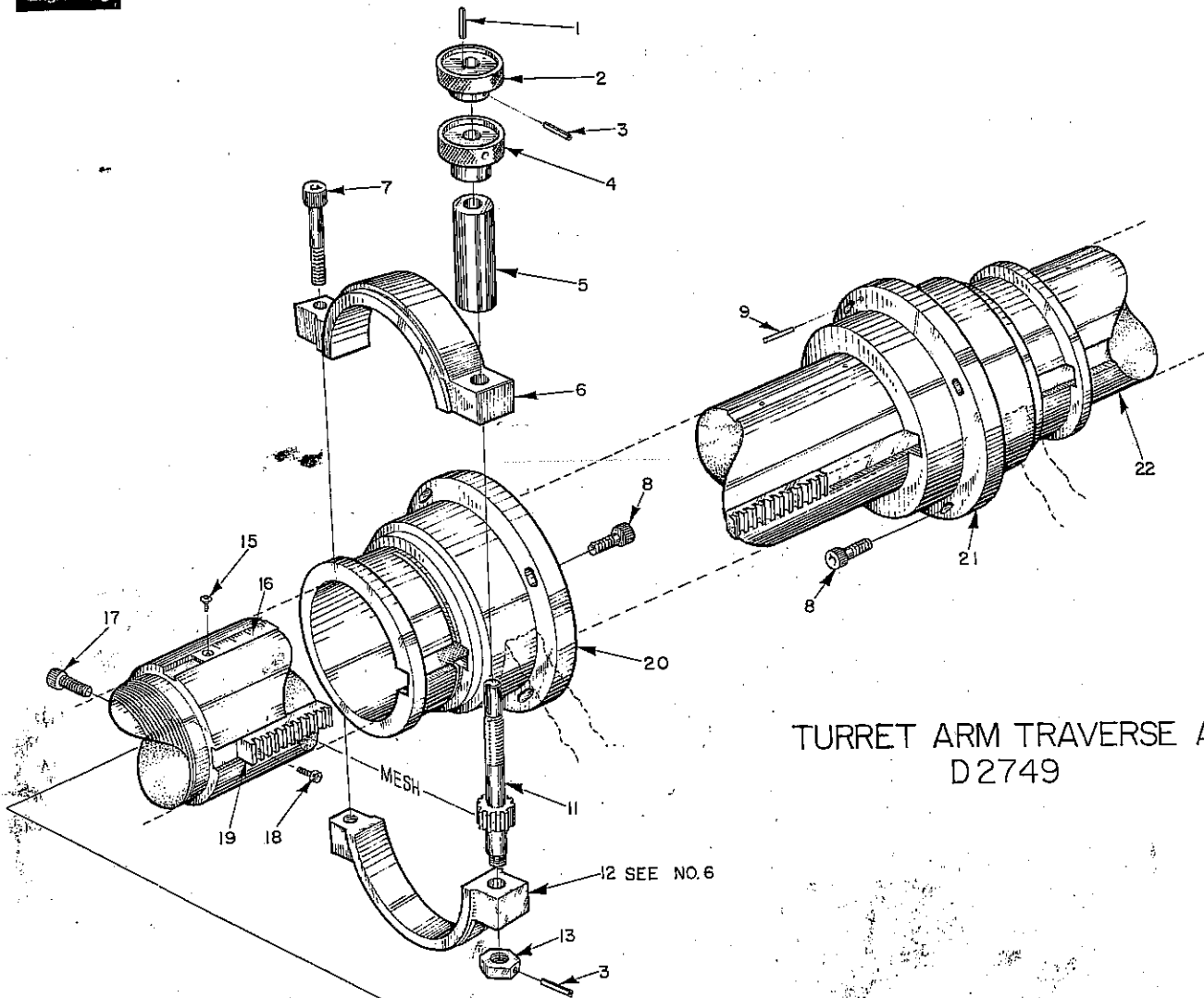
<u>KEY NO.</u>	<u>NAME & DESCRIPTION</u>	<u>PART NUMBER</u>	<u>QTY.</u>
		125	
1	Screw, Lock	A100-172-2	2
2	Key, Turret Hub	A100-116	1
3	Pin		
4	Hub	C100-060-1	1
4a	Hub	C100-060-2	1
5	Shaft	C10000063	1
6	Socket Head Cap Screw	3/8-16 x 2 1/2	8
6a	Arm, Turret R.H.	C10000049	1
6b	Arm, Turret L.H.	C10000048	1
7	Enclosure	D100-491-5	1
7a	Arm, Turret Head Stock	C100-139-4	

DOUBLE DANCER AND IDLER ROLL ASSY.

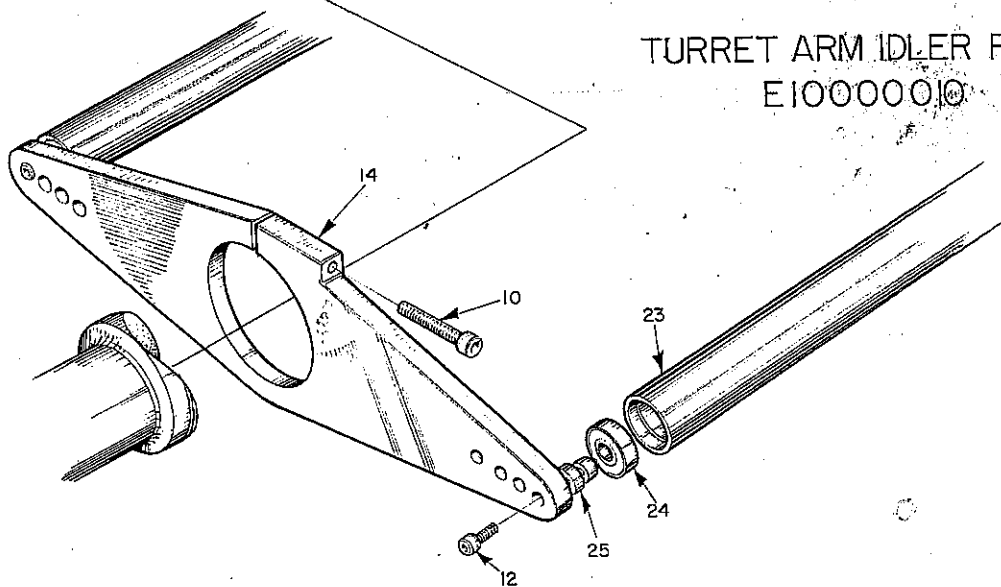
1	Arm, Double Dancer	B100-207-4	2
2	Arm, Double Dancer	B100-207-4	
3	Counter Weight	A10000094	1
4	Shaft, Pivot	B10000094	1
4a	Bearing, Flange (Not Shown)	MFC-20	2
5	Socket Head Cap Screw	3/8-16 x 1/2	
6	Socket Head Cap Screw	3/8-16 x 1/2	
7	Bearing	SKF_71224	A/R
8	Idler Roll 3-1/2	B10000095	2 or 3
9	Shaft, Girt 1 1/2	A10000086	8
10	Stub, Shaft	A10000023	4
11	See No. 7		
12	See No. 8		
13	Socket Head Cap Screw	3/8-16 x 1/1/2	



PLATE WC-2



TURRET ARM TRAVERSE ASS'Y.
D2749



TURRET ARM IDLER ROLL ASS'Y.
E10000010

**TURRET ARM IDLER ROLL ASSY.
TURRET ARM TRAVERSE ASSY.**

125

<u>KEY NO.</u>	<u>NAME & DESCRIPTION</u>	<u>PART NUMBER</u>	<u>QTY.</u>
1	Key	3/16 x 3/32	2
2	Adjusting Wheel	B2756-1	2
3	Roll Pin	1/8 Dia. x 1 1/4	4
4	Locking Nut	B2756-2	2
5	Spacer	B2756-3	2
6	Clamp Collar	B2753	2
7	Socket Head Cap Screw	1/2-13 x 3	2
8	Socket Head Cap Screw	3/8-16 x 1 1/2	8
9	Roll Pin	3/16 x 1 1/2	
10	Socket Head Cap Screw	3/8-16 x 2 3/4	2
11	Pinion Shaft	B2755	2
12	Same as #6		
13	Nut	B2755-2	2
14	Arm, Turret Idler, L.H. & R.H.	B10000034-1 & 2	1 each
15	Screw	#6 x 3/8	
16	Scale, Engraved	B418-484	1
17	Socket Head Cap Screw	1/2-13 x 1/2	2
18	Socket Head Cap Screw	1/4-20 x 5/8	A/R
19	Rack	L516	
20	Hub, Intermediate Headstock Arm	B2752-1	1
21	Hub, Tailstock Arm	B2752-2	1
22	Shaft, Turret/Arborless		
	Rack Type	C10000041	1
		A10000071	2
23	Idler Roll	1303	2
24	Bearing	A10000072	4
25	Shaft Stub		

HEADSTOCK AND TAILSTOCK ASSY.

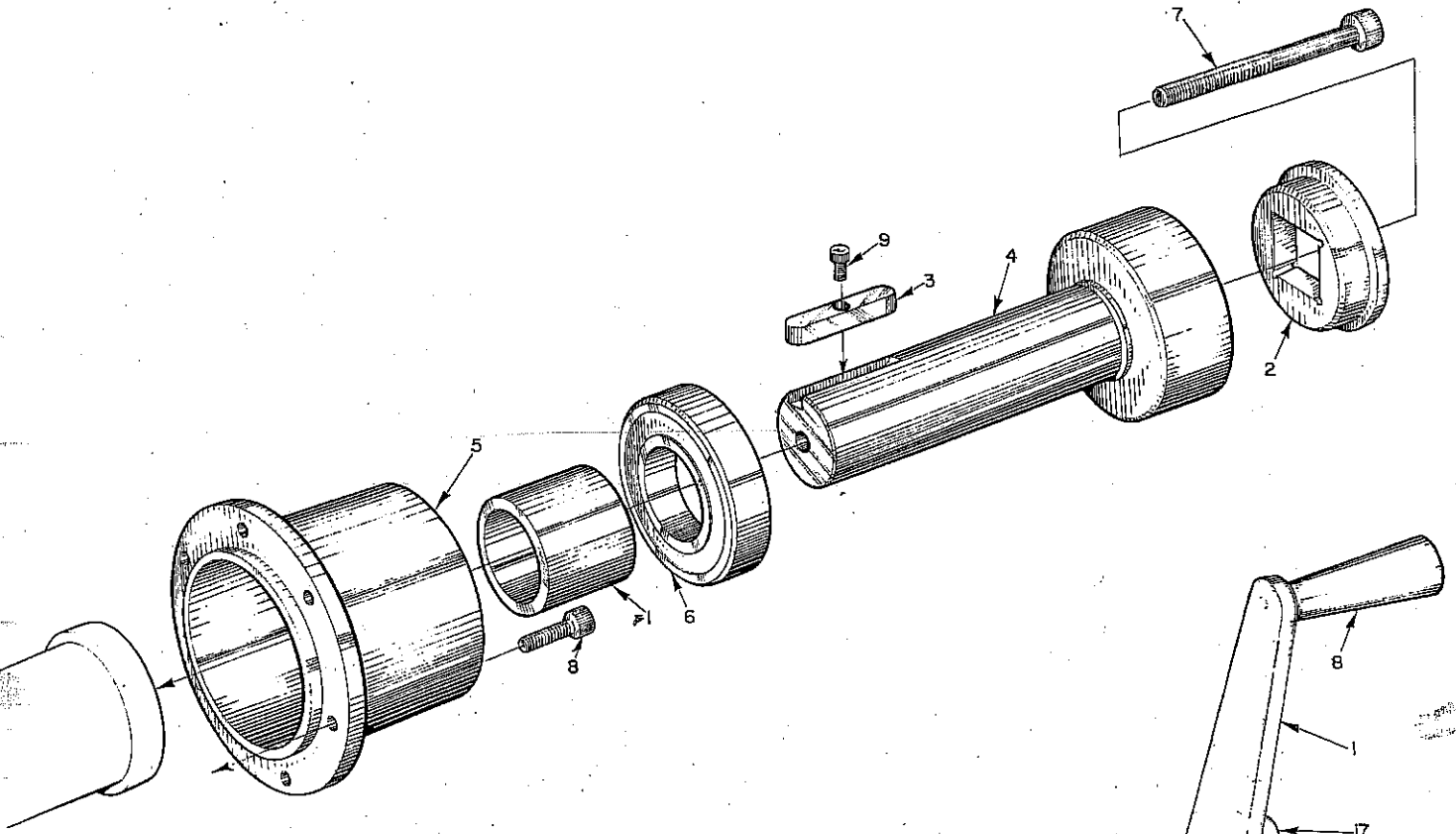
ALL WINDERS

<u>KEY NO.</u>	<u>NAME & DESCRIPTION</u>	<u>PART NUMBER</u>	<u>QTY.</u>
		1/4-20 x 3/4	10
1	Socket Head Cap Screw	B100-722	2
2	Chuck, Headstock Core 3" I.D.	B10000 ²⁴¹	2
2a	Chuck, Headstock Core 4" I.D.	B100-723	2
3	Spindle, Headstock	107KS-ZZ	4
4	Bearing, Ball	B100-099	2
5	Ring, Bearing	A100-208	2
6	Screw	A100-138	2
7	Spacer	5102-137	2
8	Retaining Ring	A100-138	2
9	Drive Shaft (Sq.) Indicate Length	3/8-16 x 3/4	2
10	Socket Set Screw 118° Cone Point	50000-262	2
11	Retaining Ring	A100-102	2
12	Cap, Cylinder End	2-231	2
13	"O" Ring	5000-100	2
14	Retaining Ring	1" x .125 x 6"	2
15	Spring	A100-104	2
16	Retainer Spring	2-331	2
17	"O" Ring	B100-088	2
18	Piston, Tailstock	B100-087	2
19	Cylinder	5/16-18 x 3/8	2
20	Socket Set Screw	305KS-22	2
21	Bearing, Ball	B100-089	2
22	Chuck, (Core Tailstock) 3" I.D.	B100-242	2
22a	Chuck, (Core Tailstock) 4" I.D.	A100-103	2
23	Washer, Clamp	5/16-18 x 3/4	2
24	Flat Head Socket Screw	1/4-20 x 1 1/4	8
25	Socket Head Cap Screw	2-111	2
26	"O" Ring	A100-209	2
27	Nipple	250SHO	2
28	Air Valve (Palm Operated)	#10-32 x 1.1/4	4
29	Socket Head Cap Screw	4HR4MR	4
30	Hydraulic Fitting	1/4 I.D.	A/R
31	Hose (Low Pressure)		

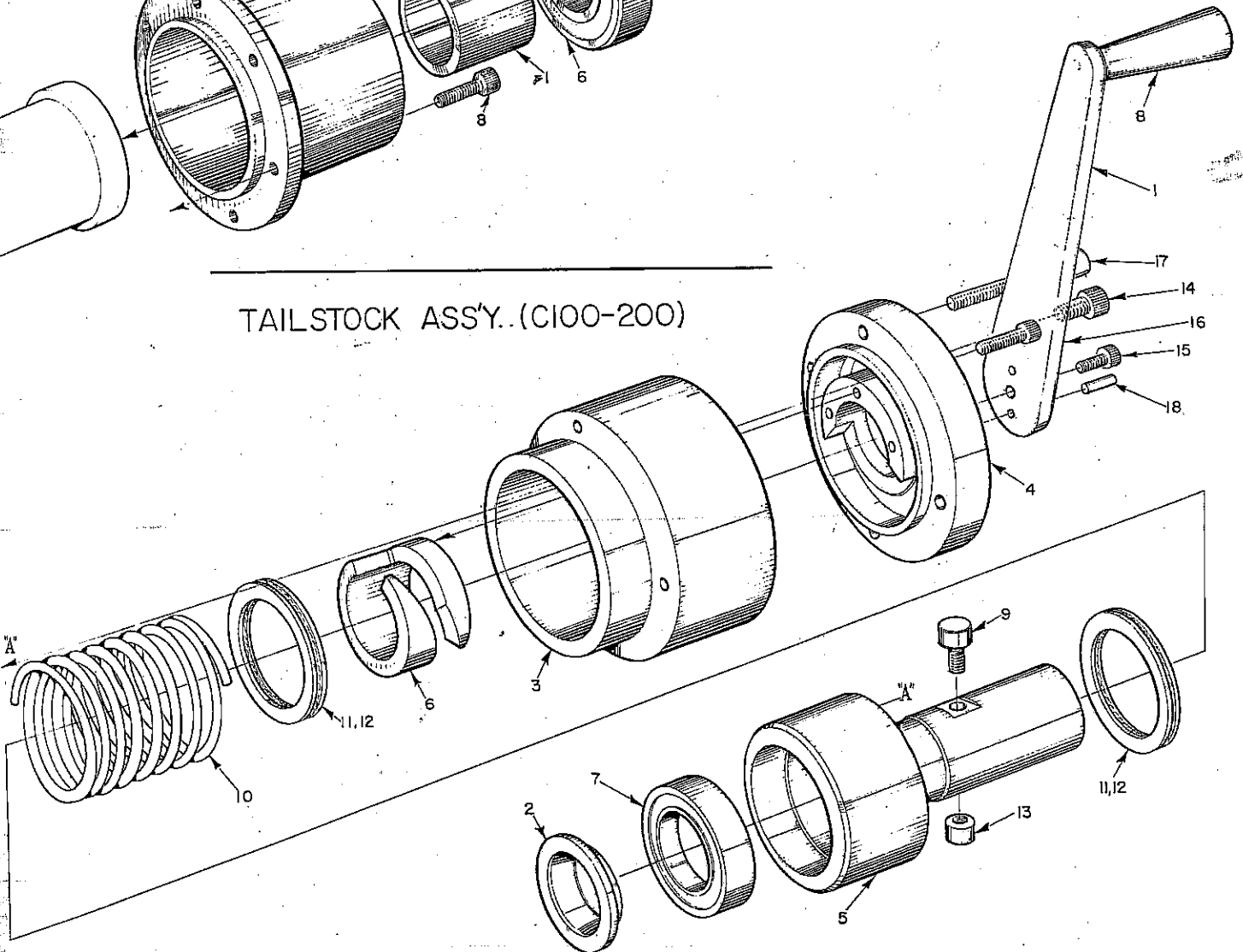


PLATE WC-4

HEAD STOCK ASS'Y. (CONVERSION FOR 133 WINDERS-D101-021)



TAILSTOCK ASS'Y. (C100-200)



KEY NO.

NAME & DESCRIPTION

PART NUMBER

HEADSTOCK ASSY. 133

1	Spacer, Bearing	A101-005
2	Collet, 2" Square	A101-006
3	Key, Spindle	A101-022
4	Spindle, Headstock	B101-007-2
5	Housing, Bearing	C101-015-2
6	Bearing, Ball	310S-22
7	Socket Head Cap Screw	3/8-16 x 3 1/4
8	Socket Head Cap Screw	5/16-18 x 1 1/2
9	Socket Head Cap Screw	10-32 x 1/2

TAILSTOCK ASSY.

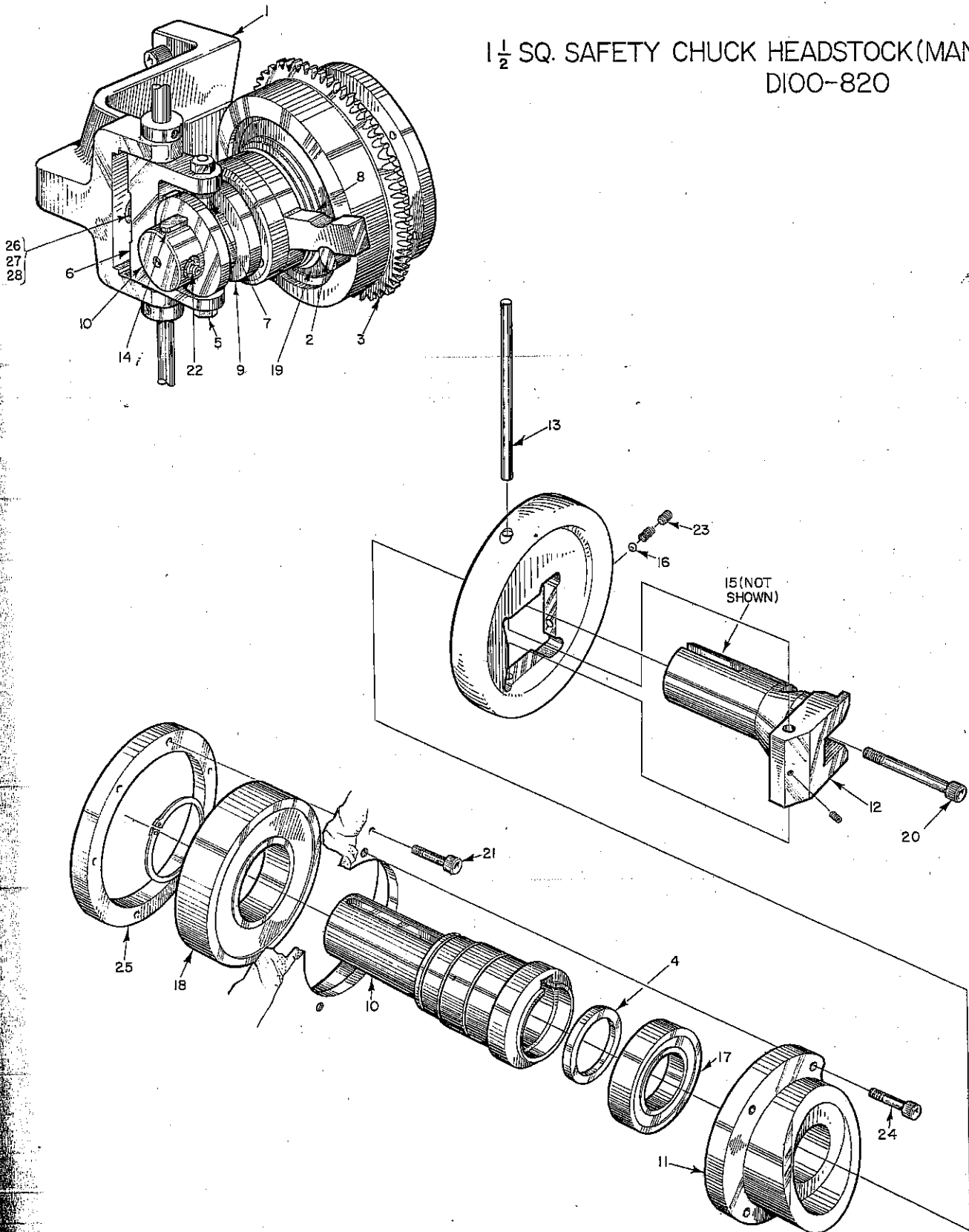
130

1	Arm, Tailstock Handle	A100-194-2
2	Collet	B100-195
3	Housing, Tailstock	B100-196
4	Housing, Cap	C100-197
5	Spindle	C100-198
6	Cam	C100-199
7	Bearing	108KSZZ
8	Handle	CHR_2
9	Cam Roll	CFH-5/8
10	Spring	3.25 O.D. .281 W x 6.00
11	Bearing, Thrust	NTA-4052
12	Race, Thrust	TRA-4052
13	Allen Nut	.312-24
14	Socket Head Cap Screw	.500-13 x .62
15	Socket Head Cap Screw	.375-16 x .75
16	Socket Head Cap Screw	.250-20 x 1.25
17	Socket Head Cap Screw	.312-18 x 3.00
18	Roll Pin	.188 x 1.00



PLATE WC-6

1 1/2 SQ. SAFETY CHUCK HEADSTOCK (MANUAL)
D100-820



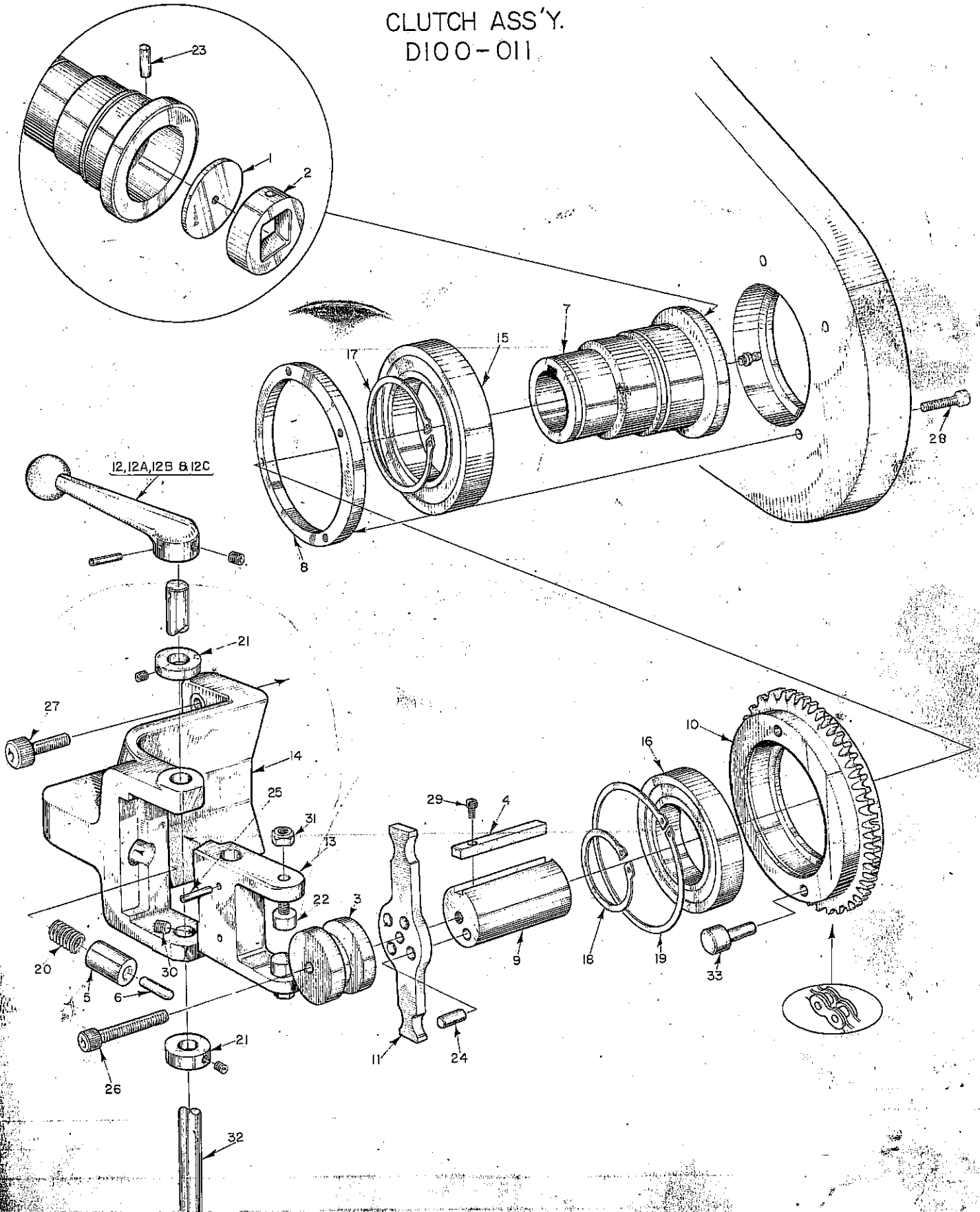
1 1/2 SQ. SAFETY CHUCK HEADSTOCK - MANUAL

KEY NO.	NAME & DESCRIPTION	143 PART NUMBER	QTY.
1	Shipper Bracket	C100-814	1
2	Hard Dowels	.753 x 2.00 Long	2
3	Sprocket (40 Teeth, 5/8 Pitch)	B100-819	1
4	Spacer	A100-523	1
5	Nut	5/16-24	1
6	Shipper Yoke	B100-815	1
7	Cam Roll (McGill)	CFH-5/8-S	2
8	Clutch Plate	B100-817	1
9	Clutch Plate Spool	B100-818	1
10	Spindle Extension	B100-816	1
11	Chuck Housing	C100-516	1
12	Spindle	C100-515	1
13	Drive Rod	1/2 x 6 Long	1
14	Key, Square	1/2 x 3 7/8 (Round Ends)	1
15	Key, Square Not Shown	1/2 x 1 3/4 (Round Ends)	1
16	Ball Detent (Jergens)	1/2 NC #B-34	1
17	Bearing, Ball	MRC 310-SZZ	1
18	Bearing, Ball	MRC 217-SZZ	1
19	Bearing, Ball	MRC 115-KSZZ	1
20	Socket Head Cap Screw	1/2-13 x 3	1
21	Socket Head Cap Screw	3/8-16 x 1	6
22	Grease Fitting	1/4-28	1
23	Set Screw	3/8-16 x 1/2	2
24	Cap Screw	1/4-20 x 1 3/4	4
25	Retaining Ring	B100-518	1
26	Toggle Pin	A100-023	1
27	Spring, Compression	1/2 O.D. x 2 Lg. .094 W.	1
28	Toggle Spring Plunger	A100-021	1



PLATE WC-7

CLUTCH ASS'Y.
D100-011



WE NEED ALL PARTS MARKED

CLUTCH ASSY. 123 124 126

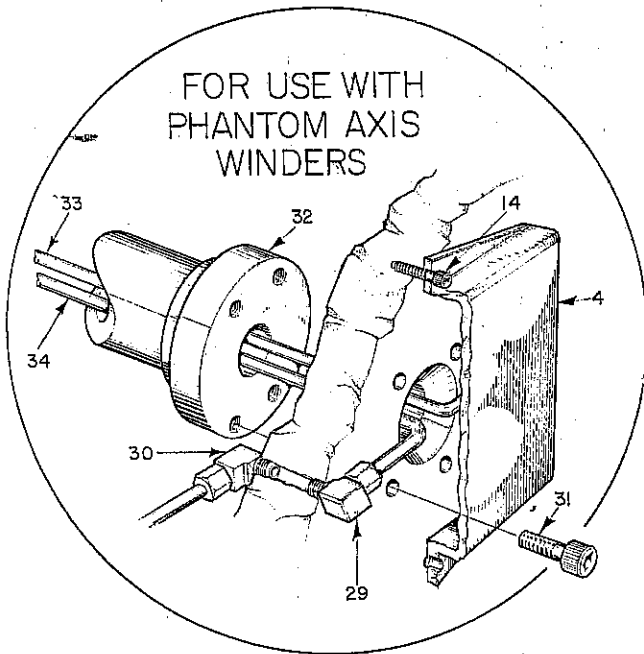
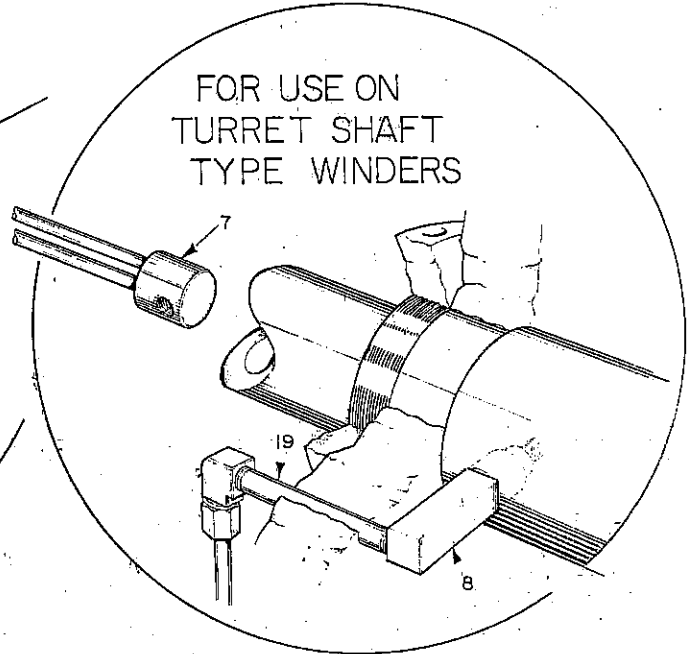
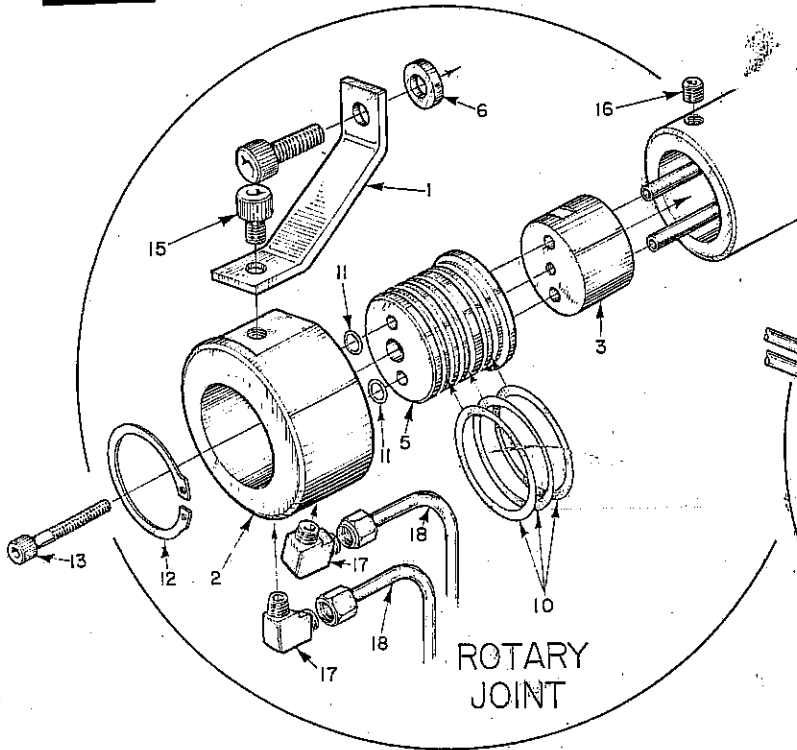
KEY NO.	NAME & DESCRIPTION	PART NUMBER	QTY.
1	Plate, Grease Retainer	A100-004	2
2	Collet, Square Drive	A100-012	2
3	Spool	A100-016	2
4	Key	A100-019	2
1-5	Cup, Toggle Spring	A100-021	2
1-6	Pin, Toggle	A100-023	2
7	Spindle	B100-013	2
8	Ring Bearing Retainer	B100-015	2
9	Shaft	B100-022	2
10	Sprocket	B100-025	2
11	Plate	B100-028	2
6-12	Handle Assembly	C100-020	4
12a	Handle	C100-020	4
12b	Knob	B-6	4
12c	Stud	.375-16 x 1.25 Long	4
1-13	Yoke	B100-026	2
1-14	Bracket	D100-017	2
15	Bearing	214-SZZ	2
16	Bearing	212-SZZ	2
17	Snap Ring	5102-275	2
18	Snap Ring	5102-231	2
19	Snap Ring	5002-433	2
20	Spring	2.00 Long .500 O.D. .093 D	2
21	Collar	SHC-625	4
22	Cam Roll	CFH-5/8 S	4
23	Dowel Pin	.312 Dia. x .625 Long	2
24	Dowel Pin	.437 Dia. x 1.00 Long	
25	Roll Pin	.188 O.D. x 1.00 Long	2
26	Socket Head Cap Screw	.375-16 x 3.00 Long	2
2-27	Socket Head Cap Screw	.375-16 x 1.25 Long	4
28	Socket Head Cap Screw	.250-20 x 1.50 Long	12
29	Socket Head Cap Screw	#8-32 x .500 Long	2
30	Socket Set Screw	.375-16 x .500 Long	6
31	Hex Nut	.312-24	4
32	Shaft	.625 O.D. Steel	Lgth. to suit
33	Pin	A100-031	4

1 KUB B100-118-1



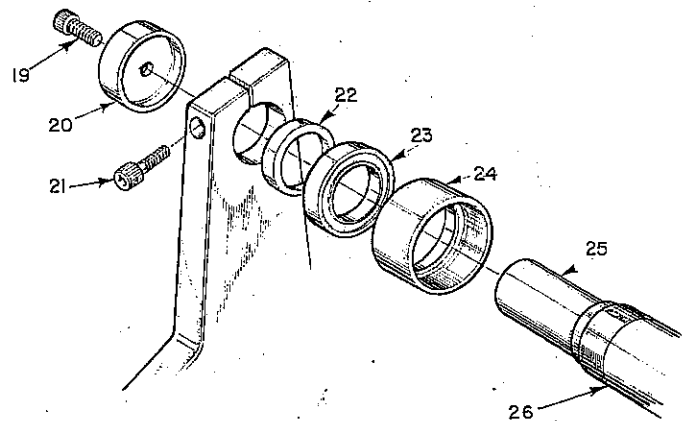
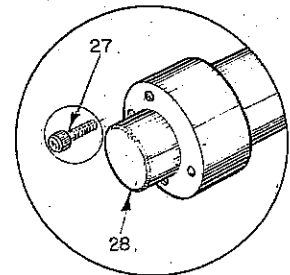
PLATE WC-8

C100-695



TAILSTOCK
TURRET
SHAFT

PHANTOM AXIS WINDERS



TURRET ARM IDLER ASS'Y.

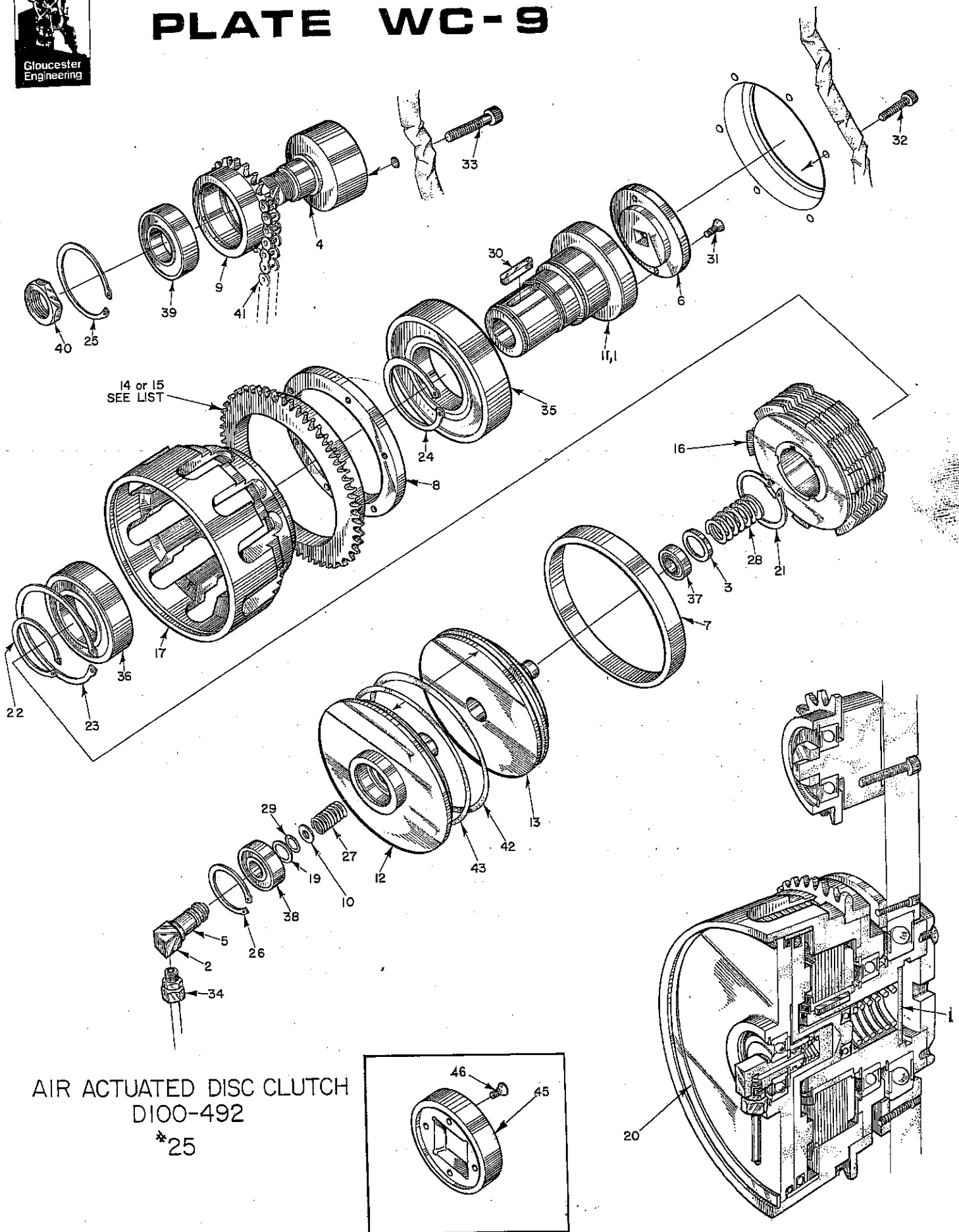
<u>KEY NO.</u>	<u>NAME & DESCRIPTION</u>	<u>PART NUMBER</u>	<u>QTY.</u>
		130	
19	Socket Head Cap Screw	5/8-11 x 2 1/2	4
20	Cap, Turret Idler Roll	A100-316	4
21	Socket Head Cap Screw	5/8-11 x 2 1/2	2
22	Spacer, Bearing	A418-003-4	4
23	Bearing, Ball	MRC-212-SZZ	4
24	Hub, Idler Roll	A100-128-2	4
25	Shaft, Turret Idler Roll	B100-314-2	2
26	Roll, Turret Idler	B100-129-2	2
27	Socket Head Cap Screw	5/8-11 x 2 1/2	4
28	Shaft, Turret Indexing	B100-301-1	1

ALL WINDERS

1	Arm, Torque	A100-318	1
2	Sleeve	A100-411	1
3	Plug, Compression	A100-412	1
4	Cover, Clutch Piping	B100-296	143 ONLY
5	Body	B100-413	1
6	Washer, Special	B005-001-36	1
7	Plug, Air Connector, Option	A100-441	1
8	Nipple, Turret Shaft, Option	A100-442	2
9	B l a n k		
10	"0" Ring	Parker 2-218	3
11	"0" Ring	Parker 2-10	2
12	Retaining Ring	5100-150	1
13	Socket Head Cap Screw	1/4-20 x 2	1
14	Socket Head Cap Screw	1/4-20 x 5/8	143 ONLY
15	Socket Head Cap Screw	3/8-16 x 3/8	1
16	Socket Set Screw	3/8-16 x 3/8	1
17	Elbow, Male	69F 1/4 x 1/8	6
18	Tubing, Copper (As Req'd.)	1/4 O.D. x .030 Wall	
19	Nipple, Length to Suit, Option	1/8 Pipe	2
20	B l a n k		
21	B l a n k		
22	B l a n k		
23	B l a n k		
24	B l a n k		
25	B l a n k		
26	B l a n k		
27	B l a n k		
28	B l a n k		
29	Elbow, Male	69F-1/4 x 1/8	
30	Elbow, Male	69F-1/4 x 1/8	6
31	Socket Head Cap Screw	5/8-11 x 2	4
32	Shaft, Turret Drive	B100-302	130 ONLY
33	Tubing, Copper	1/4 O.D. x .030 Wall	1
34	Tubing, Copper	1/4 O.D. x .030 Wall	A/R



PLATE WC-9



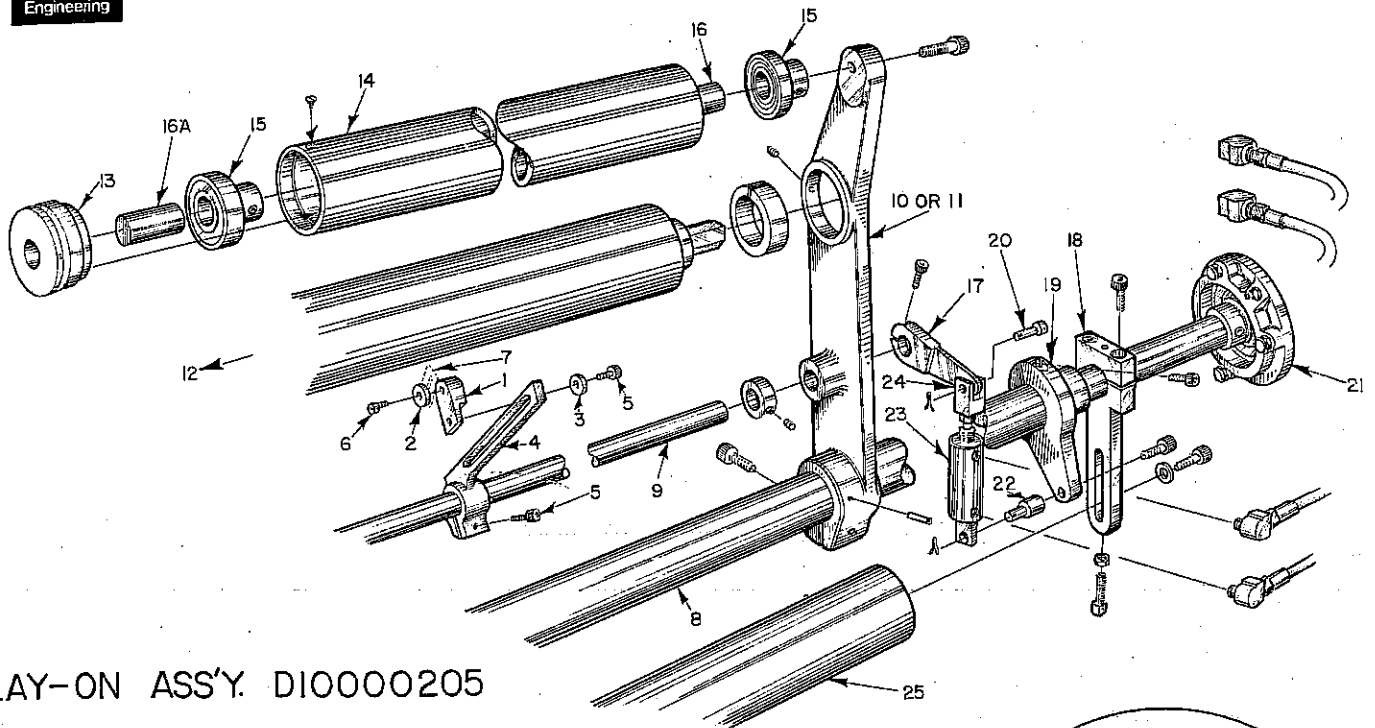
AIR ACTUATED DISC CLUTCH

125

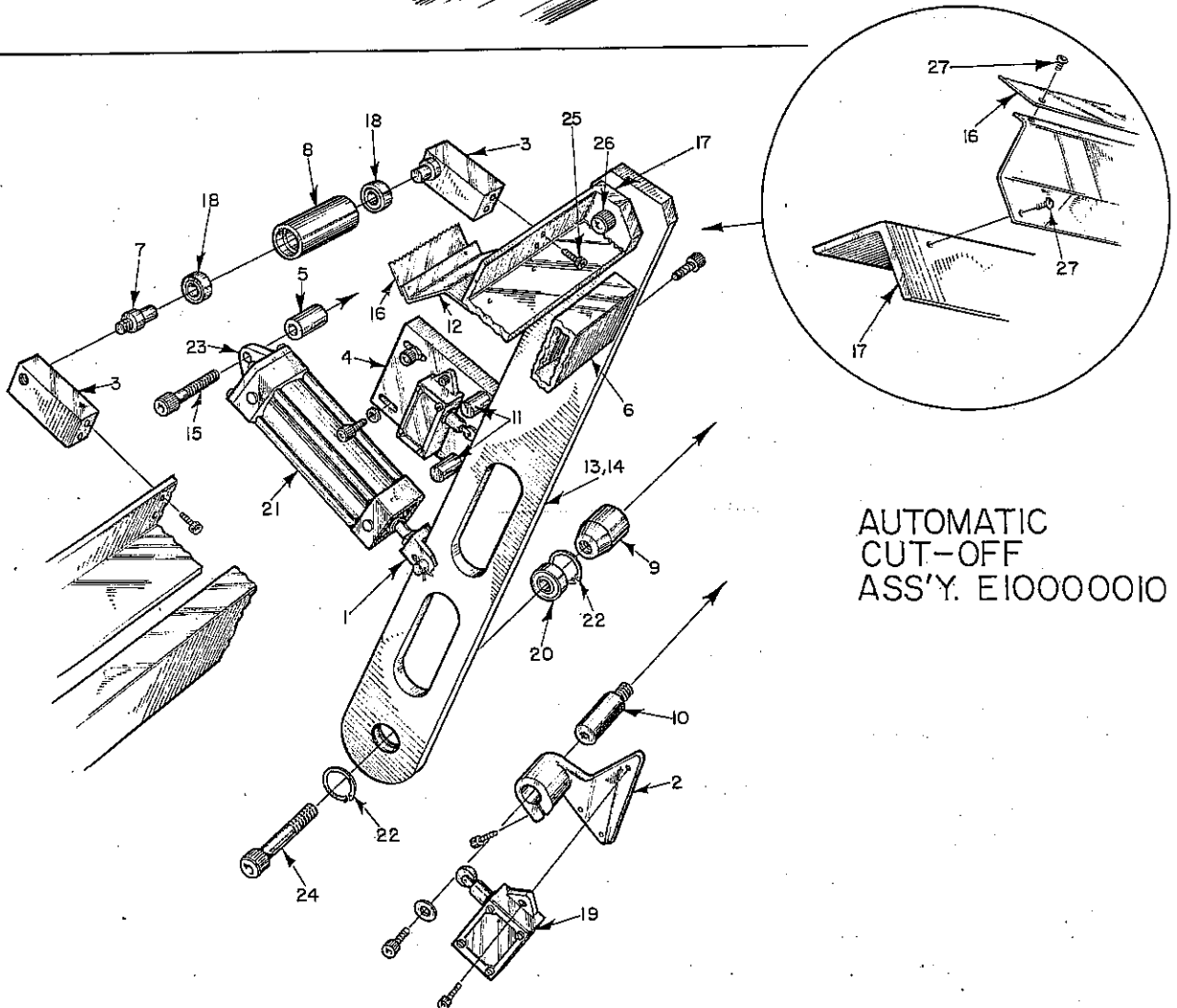
<u>KEY NO.</u>	<u>NAME & DESCRIPTION</u>	<u>PART NUMBER</u>	<u>QTY.</u>
1	Plate, Spring Retainer	A100-004-2	1
2	Adaptor, Clutch	A100-364	1
3	Adaptor, Spring	A100-419	1
4	Stud, Idler Turret	A100-313-3	1
5	Seal	A100-507	1
6	Hub, Interchangeable Drive	B100-118-1	1
7	Cylinder, Clutch	B100-363	1
8	Bearing, Retainer	B100-015	1
9	Sprocket, Idler	B100-185-1	1
10	Washer		1
11	Spindle, Headstock	C100-361	1
12	Cap, End	C100-362	1
13	Piston, Clutch	C100-403	1
14	Sprocket, Clutch	C100-404	1
15	Pulley, Clutch (Belt Drive Only)	B10000136	1
16	Clutch, Disc	#25	1
17	Drum, Clutch	D100-360	1
18	Ring, Retaining	S100-S9	1
20	Ring, Retaining	N5000-600	1
21	Ring, Retaining	S10Z-187	1
22	Ring, Retaining	S102-215	1
23	Ring, Retaining	N5002-354	1
24	Ring, Retaining	S102-275	1
25	Ring, Retaining	N5000-206	1
26	Ring, Retaining	N5000-156	1
27	Spring, .068 Dia. Wire	.562 O.D.x.593 Lg.	
28	Spring, .094 Dia. Wire	.100 O.D.x2.00 Lg.	
29	"O" Ring	#2-111	1
30	Key, Square	.375 Square	1
31	Screw, Flat Head Cap	.375-16 x .300 Lg.	
32	Socket Cap Screw	.250-20 x 1.50 Lg.	
33	Socket Cap Screw	.375-16 x 1.50 Lg.	
34	Fitting, Male Connector	1/8 NPT x 1/4 O.D. Tube	1
35	Bearing	214SZZ	1
36	Bearing	111KSZZ	1
37	Bearing	101KSZZ	1
38	Bearing	302SZZ	1
39	Bearing	304SZZ	1
40	Nut, Finished Hex (Jam)	.750-16	1
41	Chain	#40 Roller	A/R
42	"O" Ring	2-357	1
43	"O" Ring	2-254	1
45	Collet, 2" Square Arbor	B10000389	2
46	Flat Head Socket Screw	3/8-16 x 1 3/8	8



PLATE WC-10



LAY-ON ASS'Y. DI0000205



AUTOMATIC
CUT-OFF
ASS'Y. E10000010

<u>KEY NO.</u>	<u>NAME & DESCRIPTION</u>	<u>PART NUMBER</u>	<u>QTY.</u>
AUTOMATIC CUT-OFF			
125 131			
1	Yoke, Cylinder	A321-024	2
2	Bracket	B100-496	1
3	Block	A10000059	6
4	Base, L.H. Mounting	A10000324	2
5	Stud, Cylinder Mounting	A10000061	2
6	Girt	B10000331	1
7	Shaft, Stub	A10000063	12
8	Roll	A10000064	6
9	Spacer	A10000065	2
10	Stand Off (Limit Switch Bracket)	B006-001-38	1
11	Dowel	3/4 Dia. x 2" Long	2
12	Holder	B10000356	1
13	Arm, Short - Top	B10000032	1 L.H., 1 R.H.
14	Arm, Long - Bottom	B10000033	1 L.H., 1 R.H.
15	Shoulder Screw	5/8 Dia. x 2" Long	2
16	Blade	B10000357	1
17	Bar, Pt. 1 Top, Pt. 2 Bottom	B10000355	12
18	Bearing	1201	3
19	Limit Switch, R.H.	BAF1-2RQNS-RH	2
20	Bearing	SBG-10	2
21	Air Cylinder Series "C"	2 1/2 B x 6 S -Co	2
22	Retaining Ring	N5000-118	4
23	End Cap, Cylinder	L4518	2
24	Socket Head Cap Screw	5/8-11 x 3	12
25	Socket Head Cap Screw	1/4-20 x 3/4	2
26	Socket Head Cap Screw	1/2-13 x 1 1/2	A/R
27	Button Head Cap Screw	1/4-20 x 3/8	

LAY-ON ASSY.

125 131				143
1	Holder, Razor	A100-274	1	
2	Holder, Razor (Brass)	A100-275	1	
3	Washer	B005-001-40	1	
4	Arm	B100-265	1	
5	Socket Head Cap Screw	1/4-20 x 1/4 x 1	2	
6	Socket Head Cap Screw	10-32 x 1	1	
7	Razor Blade	Durham	1	
8	Shaft, Pivot	* B10000093	1	
9	Support, Center Slitter	C10000258	1	
10	Arm, Layon R.H.	D100-131		
11	Arm, Layon L.H.	D100-204		
12	Sheave, 4 1/4 Bowed Roll	B100-777	1	Not Shown
13	Sheave, 4 1/4 Layon Roll	B10000066	1	
14	Layon Roll	B10000067	2	C100-394-10 2
15	Bearing	I-71224	2	A143-015 2
16	Stub Shaft, Pt. 1 & Pt. 2	A10000078	1/1	
17	Arm, Pivot	B100-378	1	
18	Counter Weight Arm, Pt. 1	* B123-011-1	2	
19	Pivot	A2250	1	
20	Pin	A100-876	1	
21	Bearing, Flange	MFC-20	2	
22	Pin	A100-866		
23	Cylinder	1 1/8 x 2 Type "A"		
24	Clevis	445		
25	Counter Weight Pt. 2	B123-011		

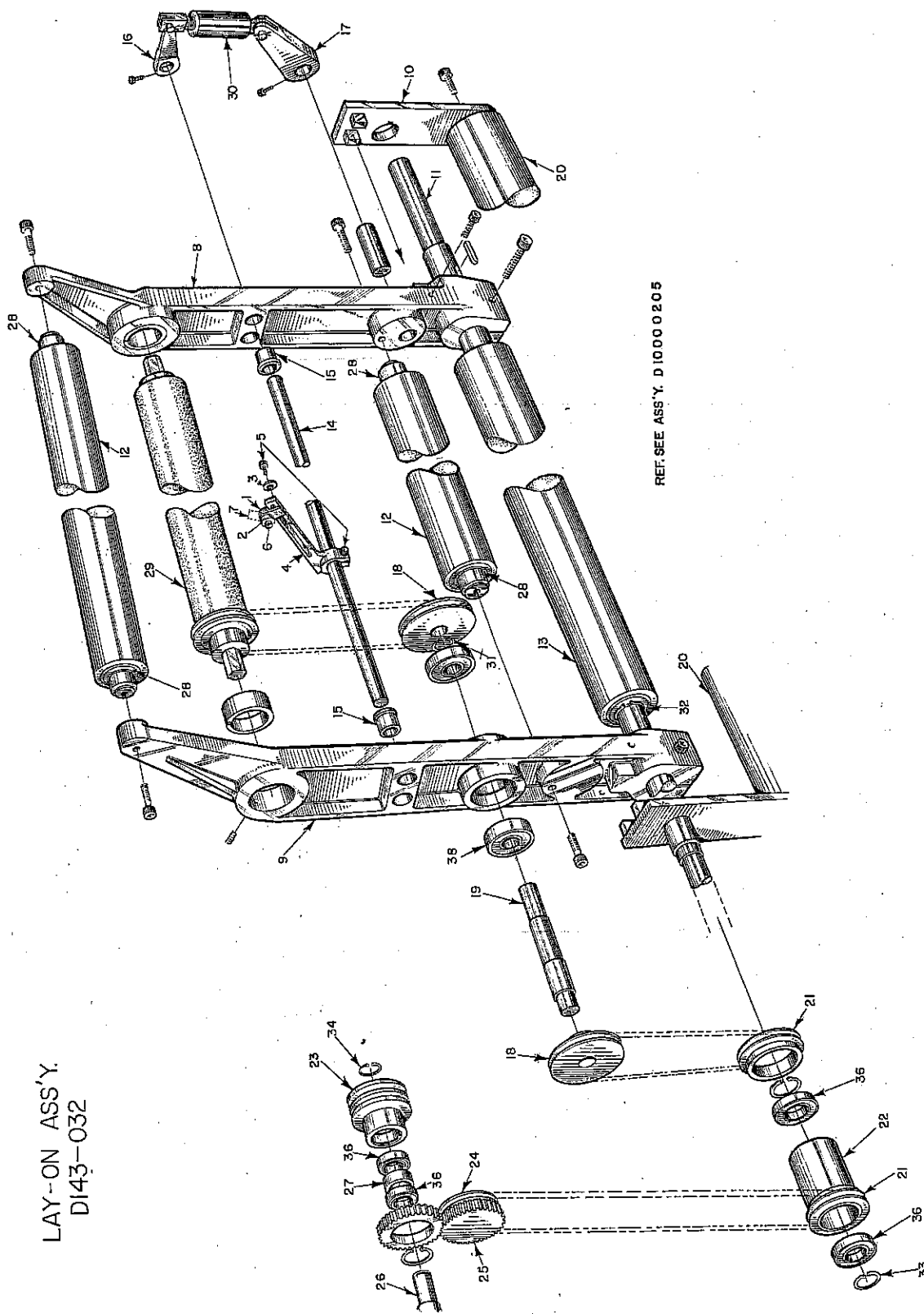
18 * B123-011 9" Slot B123-011-2 6" Slot

Not Shown Idler Roll B10000095 & Stub Shaft A10000023

8 Shaft Pivot Misc. Winder C100-213



PLATE WC-11



LAY-ON ASS'Y.
D143-032

REF. SEE ASS'Y. D1000 0205

LAY-ON ASSY. 143

123 124
125 126

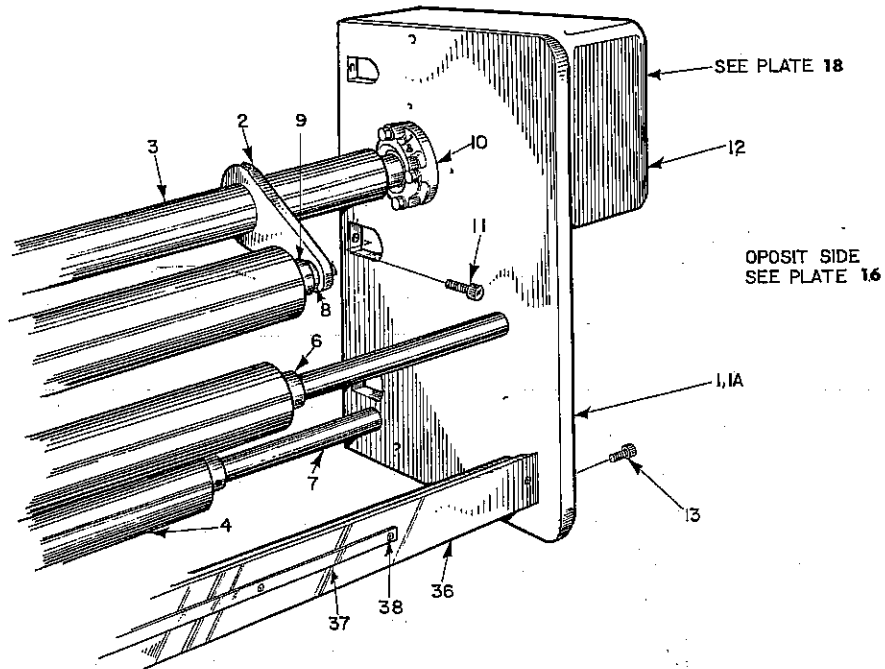
<u>KEY NO.</u>	<u>NAME & DESCRIPTION</u>	<u>PART NUMBER</u>	<u>QTY.</u>		
1	Holder, Razor	A100-274	1		
2	Holder, Razor (Brass)	A100-275	1		
3	Washer	B005-001-40	1		
4	Arm	B100-265	1		
5	Socket Head Cap Screw	1/4-20 x 1	2		
6	Socket Head Cap Screw	#10-32 x 1	1		
7	Razor Blade	Durham	1		
8	Arm, Layon Roll, R.H.	D143-004	1		D100-131
9	Arm, Layon Roll, L.H.	D143-003	1		D100-204
10	Support, C'Weight	B143-030	2		
11	Shaft	C143-007	1		
12	Idler Roll Assembly	C100-394-10	2		
13	Idler Roll Assembly	C100-394-13	1		
14	Shaft	A143-029	1		
15	Bushing	B100-813	1		
16	Actuating Arm	B143-028	2		
17	Arm	A2251	1		
18	Pulley	B143-014	1		
19	Shaft Bowed Roll Drive	B143-026	1		
20	C'Weight, Layon Roll	B100-828	1		
21	Sheave	B143--31	1		
22	Sleeve, Drive	B100-827	2		
23	Sheave, Double	B100-825	1		
24	Sheave	B143-018	1		
25	Gear	B143-017	1		
26	Stud	B143-016	2		
27	Spacer	B143-019	2		
28	Bearing	A143-015	2		
29	Mt. Hope Curved Roll (As per Customer)	I71224-U	4		
30	Cylinder	1 1/8 x 2 Type A	1		
31	Ring Retainer	5100-118	1		
32	Ring Retainer	5100-237	2		
33	Ring Retainer	5100-196	1		
34	Ring Retainer	N5102-196	2		
35	Ring Retainer	N5102-315	2		
36	Bearing	110KSZZ	6		
37	Bearing	112KSZZ	2		
38	Bearing	306S	2		
39	Bearing	MFC-24	2		
40	Cylinder, Type C	Not Shown	1		} Ref. to Plate 19
41	Cylinder, Type A	2" Bore 4" Stroke	1		
42	Stud	2" Bore 7" Stroke	1		



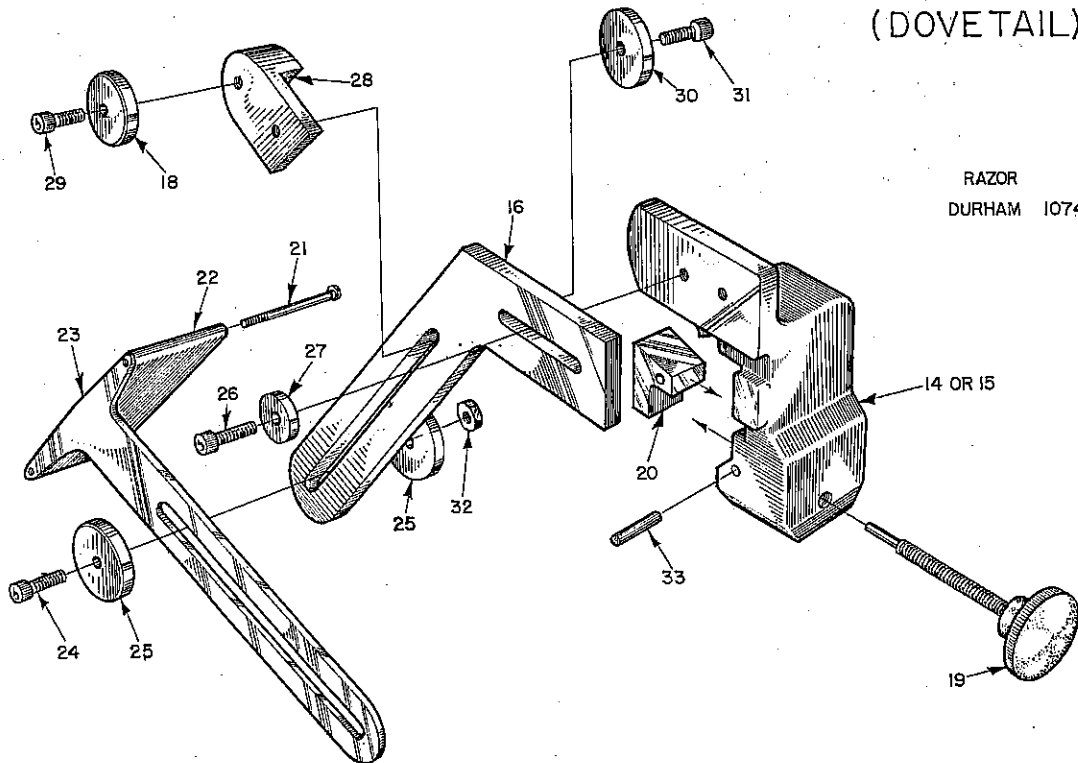
PLATE WC-12

SLITTER, DANCE & TRIM STATION

D10000209



FILM TRIMMER ASS'Y.
D10000018
(DOVETAIL)



FILM TRIMMER ASSY. SLITTER DANCE AND TRIM STATION

123 124
125 126

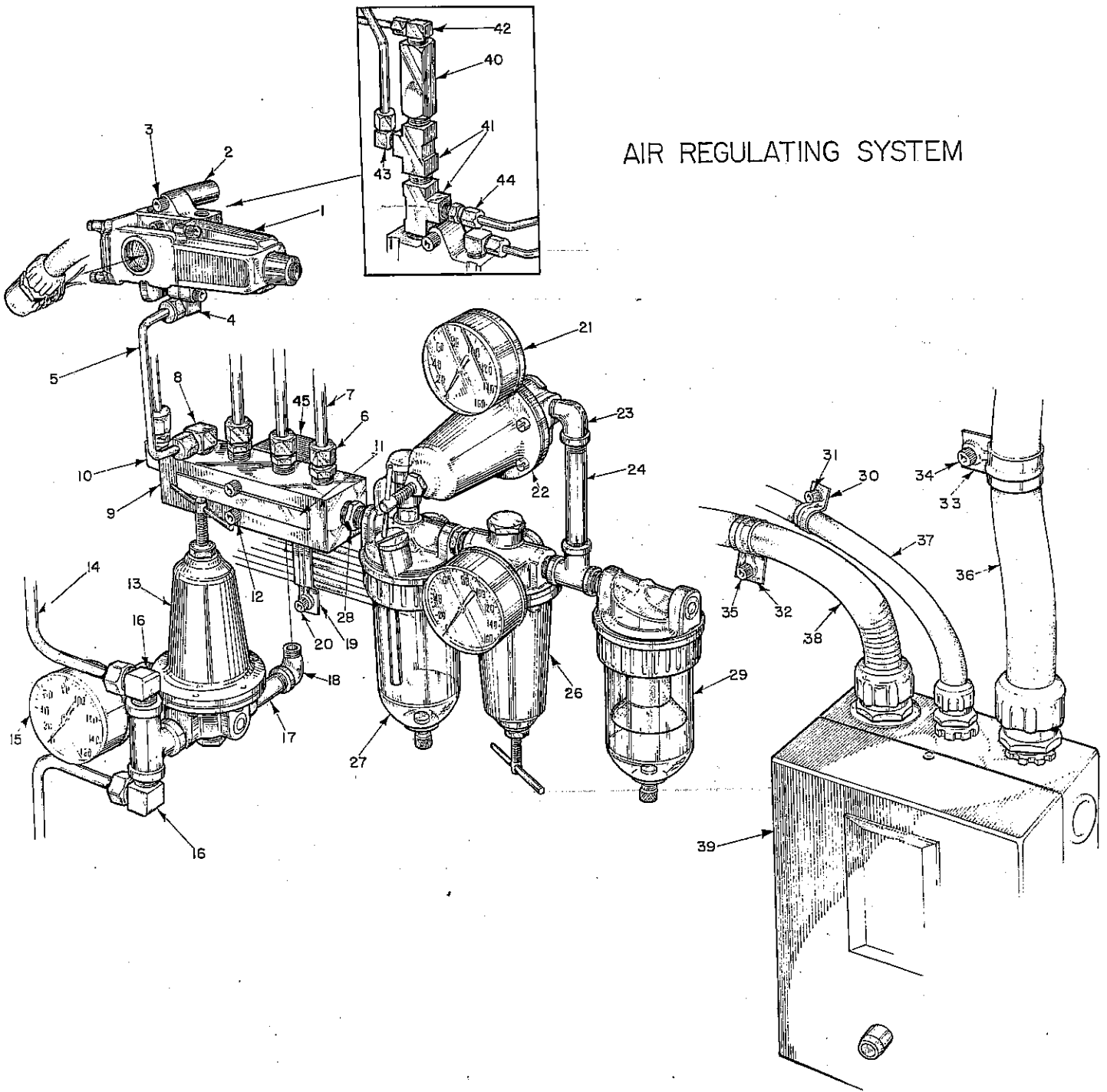
<u>KEY NO.</u>	<u>NAME & DESCRIPTION</u>	<u>PART NUMBER</u>	<u>QTY.</u>
1	Side Frame, L.H.	B10000341-3	1
1a	Side Frame, R.H.	B10000341-2	1
2	Arm Pivot, 6" Dancer	A10000301	2
* 3	Shaft, Pivot	B10000094	5
4	Idler Roll, 3 1/2	B10000095	5
5	B l a n k		
6	Bearing	SKF-71224	
7	Girt, Shaft 1 1/2	A10000086	4
8	Stub Shaft	A10000023	2
9	Bearing	MFC-18	
10	Bearing	MFC-20	
11	Socket Head Cap Screw	1/2-13 x 1 3/4	
12	Enclosure (As per Customer)		
13	Socket Head Cap Screw	1/4-20 x 1 1/2	
14	Slitter Dovetail Mounting, L.H.	C101-148-1	1
15	Slitter Dovetail Mounting, R.H.	C101-148	1
16	Arm, Dovetail Slitter	C101-149	2
17	B l a n k		
18	Holder, Razor (Brass)	A100-275	2
19	Knob, Plastic	A10000284	2
20	Clamp, Dovetail Slitter	A101-160	2
21	Slotted Screw (As per Customer)	A10000284	2
22	Razor Holder	C2417-4	A/R
23	Razor Holder	C2417-2	2
24	Socket Head Cap Screw	1/4-20 x 1	
25	Washer	B005-001-40	
26	Socket Head Cap Screw	1/4-20 x 1 1/4	
27	Washer, Steel	B005-001-20	6
28	Holder, Razor (Altered)	A100-274	2
29	Socket Head Cap Screw	10-32 x 1	1
30	Washer	B005-001-40	1
31	Socket Head Cap Screw	1/4-20 x 1 1/4	1
32	Nut	1/4-20	1
33	Pin	1/4 x 2 1/2	2
36	Bar, Dovetail (Trimmer Mounting)	C10000197 125	
		C10000198 123 124 126	
		C101-152 (Misc. Winder)	
37	Scale (As per Customer)		
38	Flat Head Screw	10-32 x 1/2	

* 3 Misc. Winders C100-120



PLATE WC-13

AIR REGULATING SYSTEM



AIR REGULATING SYSTEM

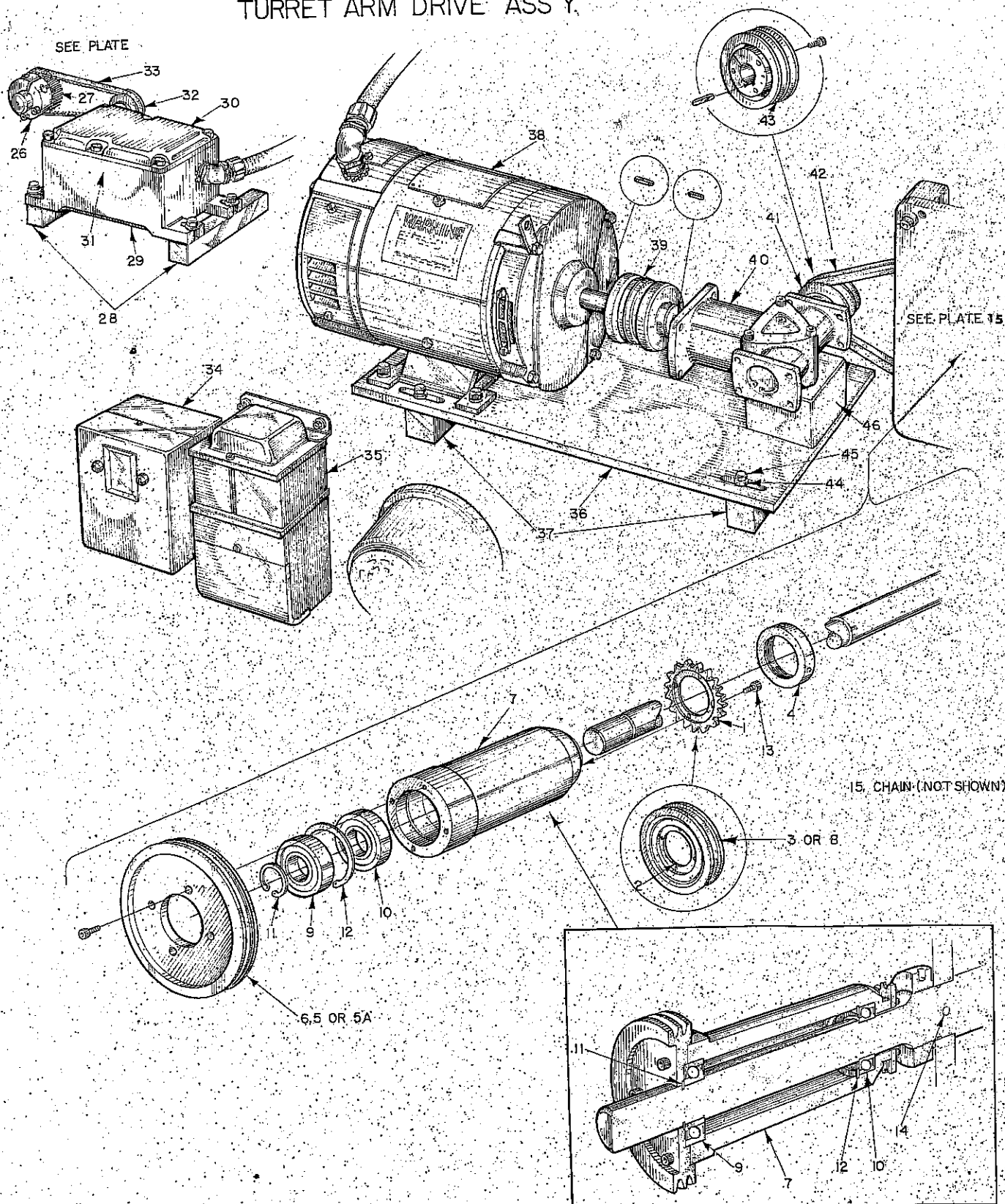
KEY NO.	NAME & DESCRIPTION	PART NUMBER	QTY.
		ALL WINDERS	
		ISA-4	1
1	Solenoid, Numatics.		
2	Spacer		
3	Socket Head Cap Screw		
4	Elbow	1/4	
5	Tubing	1/4	
6	Adaptor	68 x 6B	
7	Tubing	3/8	
8	Elbow	1/4	
9	Manifold (4 Hole)	A100-322	1
10	Elbow	1/4	
11	Name Plate		
12	Socket Head Cap Screw		
13	See #26		
14	Tubing	3/8	
15	Gauge (see #40)		
16	Elbow	3/8 x 3/4	
17	Pipe		
18	Elbow		
19	Clamp (Altered)	#155	
20	Socket Head Cap Screw		
21	Gauge (see #40)		
22	See #26		
23	Elbow		
24	Pipe	1/4 x 5"	
25	B l a n k		
26	Air Regulator, 1/4 Watts	16-2	
27	Lub.	606-2	
28	Adaptor	602-2	
29	Filter	#130	
30	Clamp		
31	Socket Head Cap Screw		
32	Clamp	#145	
33	Clamp	#155	
34	Socket Head Cap Screw		
35	Socket Head Cap Screw		
36	As per Customer		
37	As per Customer		
38	As per Customer		
39	Electrical Box	705-TAA	
40	Adaptor	1/4-C400-1310	
41	"T"	3700 x 4	2
42	Elbow	1/4	
43	Elbow	1/4	
44	Compression Nut	1/4 x 3/8	
45	Spacer, Manifold	A100-323	1

All part numbers and sizes have not been used because of a variety of sizes.



PLATE WC-14

TURRET ARM DRIVE ASS'Y.



D10000055

TURRET DRIVE ASSY.

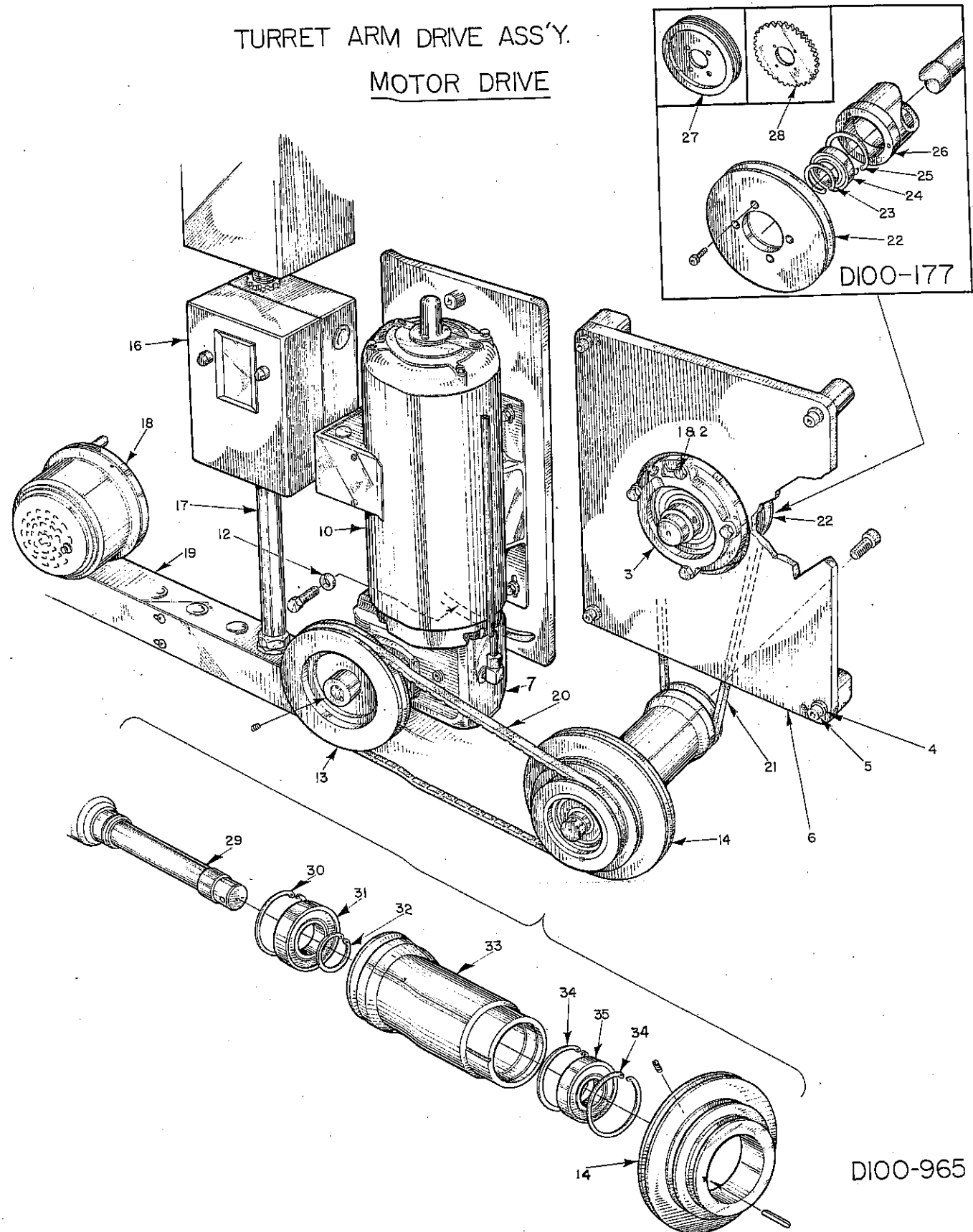
<u>KEY NO.</u>	<u>NAME & DESCRIPTION</u>	<u>PART NUMBER</u>	<u>QTY.</u>
1	Sprocket	A10000069	1
2	Pulley	B10000134	1
3	Hub	B10000135	1
4	Nut	B009-001-1	1
5	Sprocket	B10000062	1
5a	3 Speed Pulley		
6	Sheave	B10000344	1
7	Sleeve	C10000038	1
8	Double Pulley	C10000168	1
9	Bearing	212S-FF	1
10	Bearing	113KS-FF	1
11	Retaining Ring	5100-225	1
12	Retaining Ring	N5002-393	1
13	Socket Head Cap Screw	1/4-20 x 5/8	12
14	Dowel	3/8 Dia. x 1 1/2	1
15	Chain	#40L-1/2P	30 Ft.
16	B l a n k		
17	B l a n k		
18	B l a n k		
19	B l a n k		
20	B l a n k		
21	B l a n k		
22	B l a n k		
23	B l a n k		
24	B l a n k		
25	B l a n k		
26	Hub, Pulley Mounting	A10000166	1
27	Pulley, Timing Belt	A10000167	1
28	Bar, Mounting	A10000304	2
29	Enclosure	C10000199	1
30	Cover	C10000201	1
31	Rotary Mechohm (ERC)	311-36-D	1
32	Pulley (Timing Belt .375 Bore)	28 x L037	1
33	Belt, Timing	210 x L037	1
34	Electrical Box	709-TAD1	
35	Transmission, Jefferson	As per Customer	
36	Plate, Mounting	A10000312	1
* 37	Bar, Mounting	A10000313	2
38	Motor	As per Customer	
39	Coupling (T. B. Wood)	#5 3/4 x 7/8 Bores	1
40	Rt. 90° Gear Box	As per Customer	
41	Bushing, QD	SH-3/4	1
42	Belt		
43	Sheave	As per Customer	
44	Washer	B005-001-2	4
45	Cap Screw	3/8-16 x 1 1/4	4
46	Spacer	A100-739	1

* 37 Bar Mounting (A10000002 = 11 3/8) (A160-012 = 22 1/2) (B3377 = 12)



PLATE WC-15

TURRET ARM DRIVE ASS'Y. MOTOR DRIVE



TURRET ARM DRIVE ASSY.

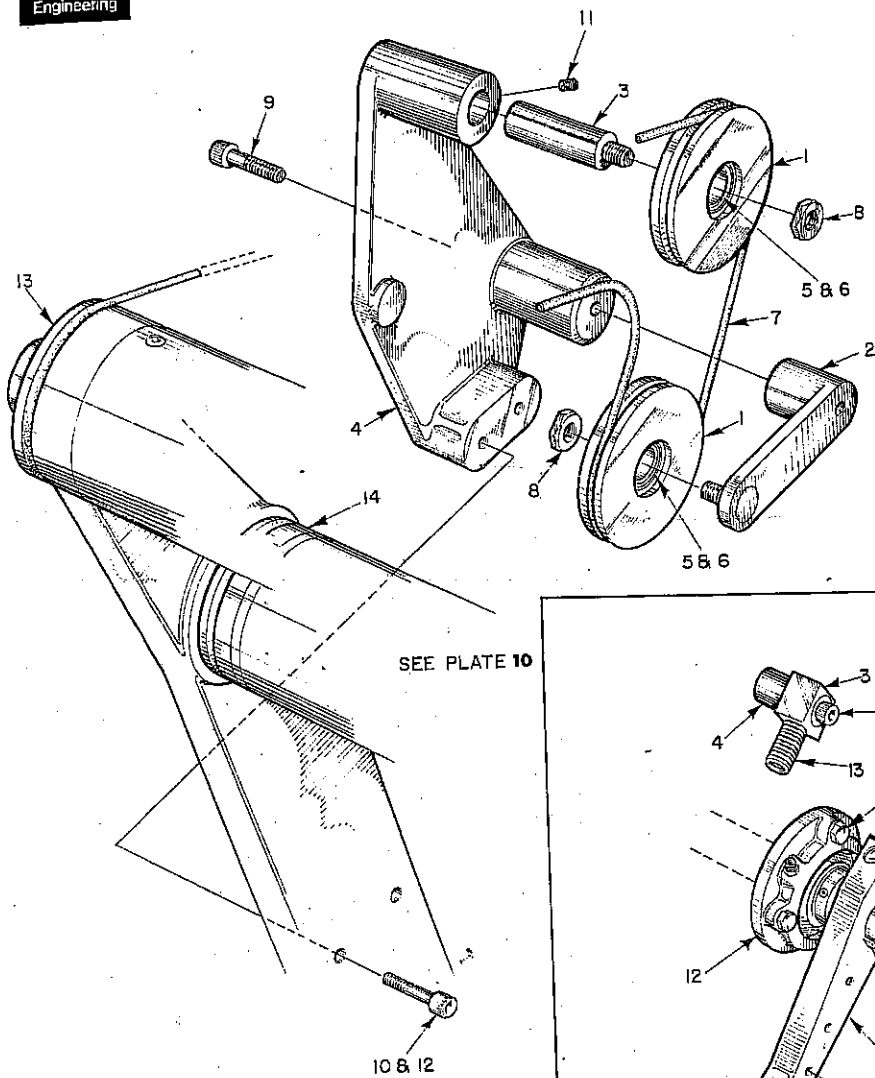
<u>KEY NO.</u>	<u>NAME & DESCRIPTION</u>	<u>PART NUMBER</u>	<u>QTY.</u>
1	Cap Screw	1/2-13 x 1 3/4	4
2	Washer	B005-001-15	4
3	Bearing	SFC-36	1
4	Washer	B005-001-9	4
5	Socket Head Cap Screw	1/2-13 x 3 1/2	4
6	Bearing Support	C100-068-2	1
7	Right Angle Reducer, As per Customer		
8			
9			
10	Motor, As per Customer		
11			
12	Motor Pulley, As per Customer	C101-004	1
13	Stud Shaft Pulley	B100-946	1
14	B l a n k		
15	Electrical Box	205-TAA	A/R
16	Conduit	A/R	A/R
17	Horn	1-374-A	
18	Conduit Box		
19	Belt, As per Customer		
20	Belt, As per Customer		
21	Belt, As per Customer		
22	Pulley, As per Customer		
23	Snap Ring	5100-187	2
24	Bearing, MRC	210SFFC	2
25	Snap Ring	5000-354	2
26	Drive Sleeve (Pt. No. as per Customer)	B100-393	1
27	Double Pulley (As per Customer)	C100-964	1
28	Sprocket	A100-178	1
29	Shaft, Stud	B101-003	1
30	Retaining Ring	N5000-315	1
31	Bearing, MRC	208RZZ	1
32	Retaining Ring	5100-156	1
33	Pulley Barrel	C100-962	1
34	Retaining Ring	N5000-281	2
35	Bearing, MRC	207RZZ	1

C100-526

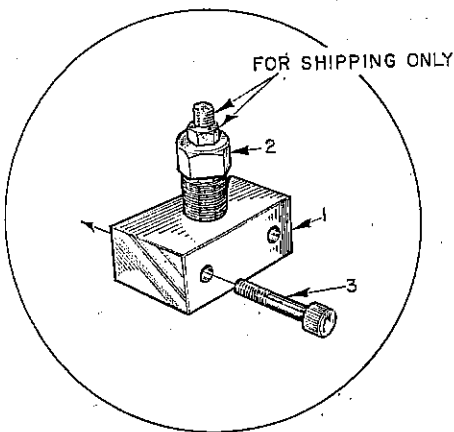


PLATE WC-16

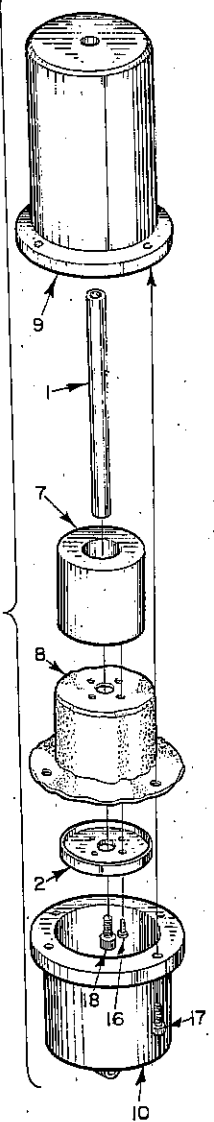
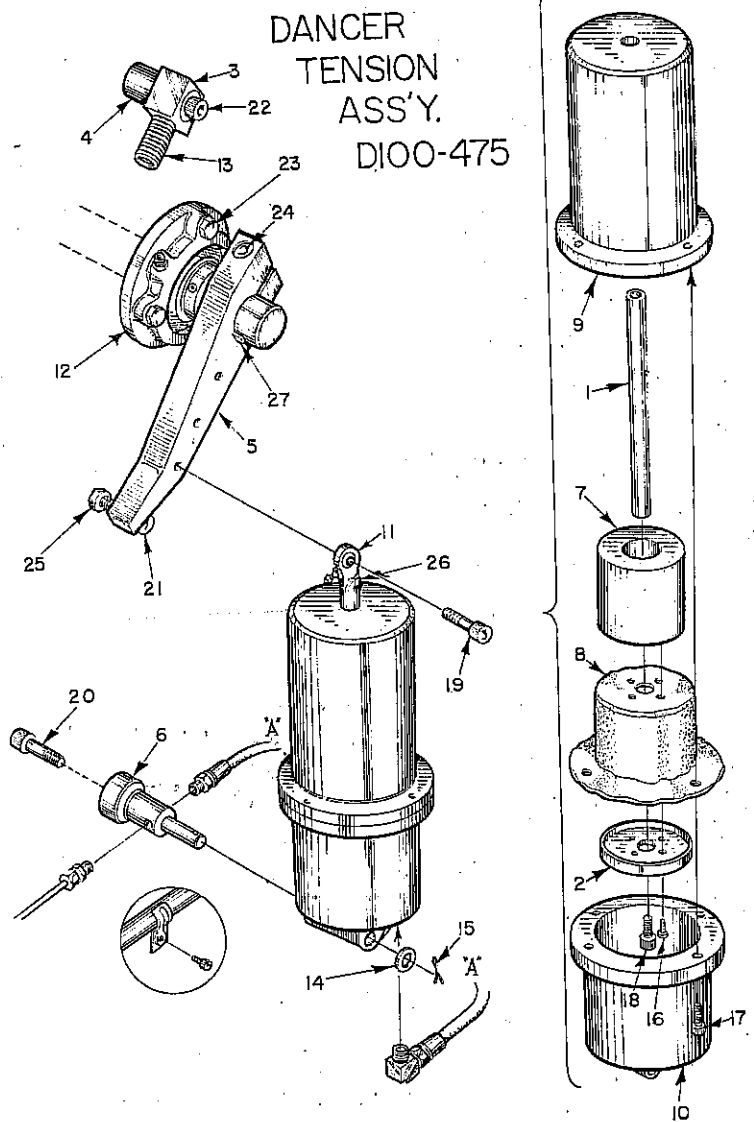
LAY-ON ROLL DRIVE
ASS'Y. D100-985
D100-064



LEVELING ASS'Y.



DANCER TENSION ASS'Y. D100-475



LAY-ON ROLL DRIVE ASSY.

123-124-125

143

135

KEY NO.	NAME & DESCRIPTION	PART NUMBER	QTY.		
1	Sheave, Idler	A100-987	2		
2	Arm, Idler	A100-988	1		
3	Shaft, Idler	A100-989	1		
4	Support	C123-019	1	C10000044	C100-986
5	Ball Bearing	102KS22	2		
6	Retaining Ring	N5000-125	2		
7	Leather Belt & Connecting Link	1/4 Dia.	40"		
8	Nut, Hex Jam	7/16-20 UNF	2		
9	Socket Head Cap Screw	3/8-16 UNC x 2	1		
10	Socket Head Cap Screw	3/8-16 UNC x 1	2		
11	Socket Set Screw	1/4-20 UNC			
		x 5/8	2		
		3/8 I.D.	2		
12	Washer, Flat			B10000066	
13	Sheave, 4 1/4 Layon Roll			B100-777	
14	Sheave, 4 1/4 Bowed Roll			B10000067	
15	Layon Roll Not Shown			SKFT-7122	
16	Bearing				

DANCER TENSION ASSY.

All Winders

Winders w/6" Dancer Attachment

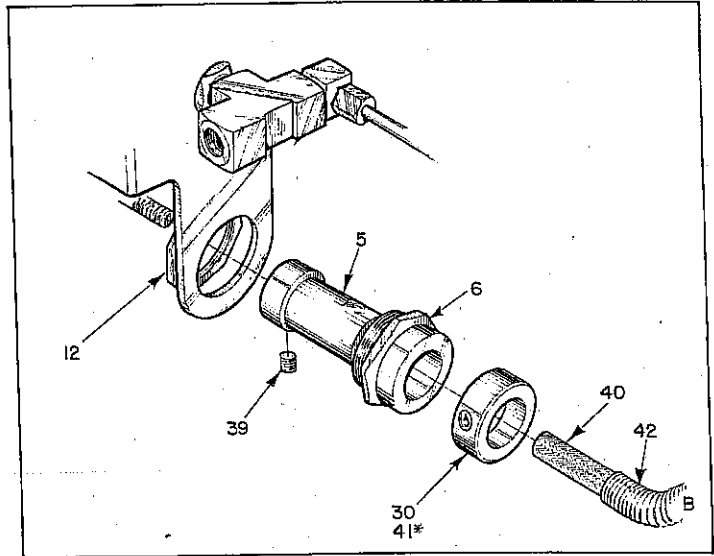
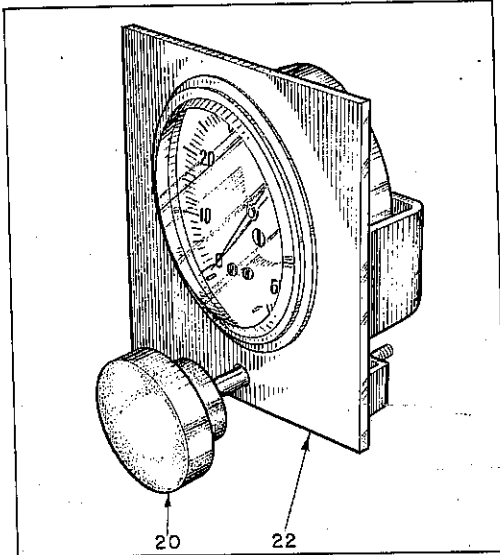
1	Rod, Piston	A100-478	1	A100-478
2	Cap, Piston	A100-479	1	
3	Bracket, Dancer Stop Spring	A100-171	1	
4	Spacer, Bracket Stop Spring	B006-001-II-5	1	
5	Arm	B100-058	1	
6	Stud, Tension Cylinder	B100-169-1	1	
7	Piston	B100-476-1	1	B100-476-2
8	Seal, Bellofram	B100-477-1	1	B100-477-2
9	Cylinder, Rod End	C100-468-1	1	C100-468-2
10	Cylinder, Pivot End	C100-469-1	1	C100-469-2
11	Spherco, Rod Eye	FREG-N	1	
12	Bearing	MFC-20	1	20GSZZG
13	Spring	1 O.D. x 3/16		
		Wire x 2 Long	1	
14	Washer	17/32 I.D.	1	
15	Cotter Pin	3/32 Dia. x		
		1 Long	1	
16	Button Head Socket Cap Screw	#10-32 UNF x		
		3/8 Long	4	
17	Socket Head Cap Screw	1/4-20 UNC x		
		3/4 Long	4	
18	Socket Head Cap Screw	5/16-18 UNC x		
		7/8 Long	1	3/8 Dia. x 3/8 Long
19	Socket Head Cap Screw	3/8-16 UNC x		
		1 3/8 Long	1	
20	Socket Head Cap Screw	3/8-16 UNC x		
		1 1/4 Long	1	
21	Socket Head Cap Screw	1/2-13 UNC x		
		2 1/2 Long	1	5/8 x 2 Socket Head
				Shoulder Screw
22	Socket Head Cap Screw	1/2-13 UNC x		
		3 1/2 Long	1	
23	Socket Head Cap Screw	3/8-16 UNC x		
		1 1/2 Long	4	
24	Socket Head Cap Screw	3/8-16 UNC x		
		1 1/2 Long	1	
25	Nut, Hex	1/2-13 UNC	1	
26	Nut, Hex, Jam	3/8-16 UNC	1	
27	Key	1/4 x 1/4 x 1 1/4 Long		

LEVELING ASSEMBLY

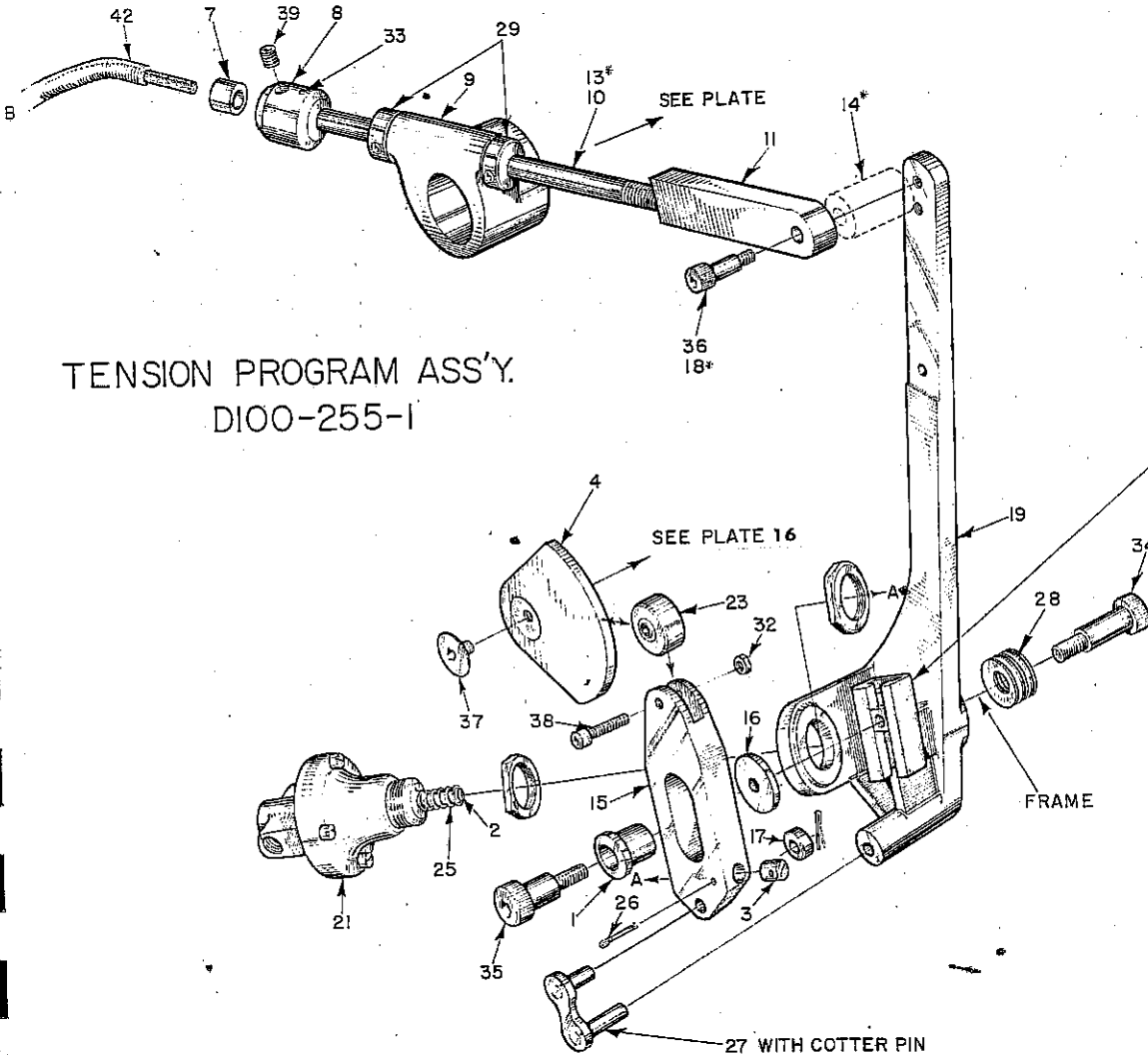
1	Block, Leveling	B100-154	4
2	Screw Leveling R.H.	A400-120	4
3	Socket Head Cap Screw	1/2-13 x 3	8



PLATE WC-17



* FOR WINDING ATTACH. ON
BAG MACH. - D100-255-2



TENSION PROGRAM ASS'Y.
D100-255-1

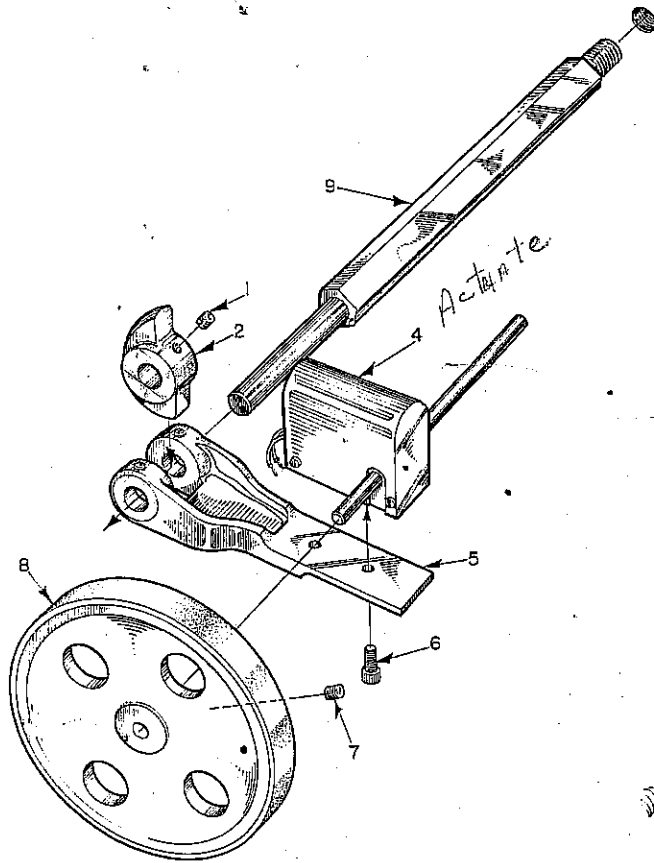
TENSION PROGRAM ASSY. USED ON ALL WINDERS

<u>KEY NO.</u>	<u>NAME & DESCRIPTION</u>	<u>PART NUMBER</u>	<u>QTY.</u>
1	Sleeve	A100-238	1
2	Plunger	A100-239	1
3	Plug, Stop	A100-242	1
4	Cam	A100-243	1
5	Bushing, Clamping	A100-248	1
6	Bushing, Fastening	A100-249	1
7	Bushing, Split	A100-250	1
8	Bushing, Connecting	A100-251	1
9	Bracket, Rod Mount	A100-252	1
10	Rod, Connecting	A100-253	1
11	Rod Eye	A100-254	1
12	Nut	A100-277	1
13	Rod, Adjusting	A418-330	1
14	Spacer	A418-331	1
15	Arm, Cam Follower	B100-240	1
16	Washer, Special	B005-001-11	1
17	Washer, Special	B005-001-12	1
18	Screw	A418-332	1
19	Bracket	C100-241	1
20	Knob, Rework	A100-490	1
21	Regulator	Conoflow H10xT-H030	1
22	Pressure Gauge	Conoflow PH-05030	1
23	Cam Follower	McGill CYR-3/4-5	1
24	"T" Nut	Jergens TN-377	1
25	Spring, Compression	SPC C480-063-1500	1
26	Cotter Pin	.048 Dia. x 1.25 Long	1
27	Link, Roller Chain	Whitney A.S.A. #80	1
28	Belville, Spring Washer	B1000-035	5
29	Collar	SC-37 Boston Gear	2
30	Collar	SC-62 Boston Gear	1
31		.250-20	1
32	Hexnut	.125 Dia. x 1.00 Long	1
33	Roll Pin	.50 x 1.25 SH	1
34	Socket Head Shoulder Screw	.50 x .875 SH	1
35	Socket Head Shoulder Screw	.375 x .625 SE	1
36	Socket Head Shoulder Screw	.375-18 x 1.50 Long	1
37	Socket Head Cap Screw	.250-20 x 1.00 Long	1
38	Socket Head Cap Screw	.250-20 x .312 Long	2
39	Socket Head Set Screw	.375 O.D.	A/R
40	Shaft, Flexible	SC-50 Boston Gear	1
41	Collar	.500 O.D.	A/R
42	Tubing		

● FOR WINDING ATTACH. ON BAG MACH.



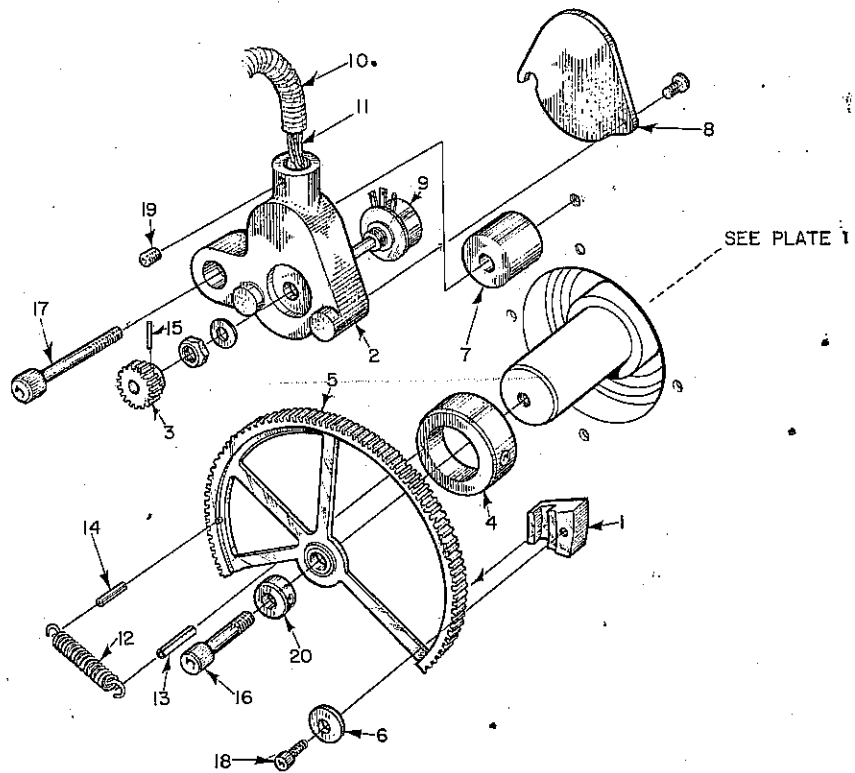
PLATE WC-18



COUNTER ASS'Y.

POTENTIOMETER
DANCER SPEED CONTROL ASS'Y.
C100-237

12" SINGLE OR
DOUBLE DANCER



POTENTIOMETER ASSY. USED ON DANCER ASSY.

<u>KEY NO.</u>	<u>NAME & DESCRIPTION</u>	<u>PART NUMBER</u>	<u>QTY.</u>
1	Block, Stop	A100-222	1
2	Housing	A100-223	1
3	Pinion	A100-224	1
4	Collar	A100-225	1
5	Gear	B100-226	1
6	Washer	B005-001-10	1
7	Spacer	B006-007-1	1
8	Cover	A100-256	1
8a	Button Head Socket Cap Screw	#10-32 x .38	1
9	Potentiometer 20K2 Watt, Clear Stat	53C1	1
10	Flexible Cable	.312 Type SL x 20" Long A/R	1
11	Wire	.18 AWG, 3 Strand A/R	1
12	Spring	3/8 x .047 x 1"	1
13	Roll Pin	.125 x 1.25	1
14	Roll Pin	.125 x 1.00	1
15	Roll Pin	.125 x .50	1
16	Socket Cap Screw	.375-16 x 2.25	1
17	Socket Head Cap Screw	.375-16 x 2.25	1
18	Button Head Socket Cap Screw	#10-32 UNF x .38	1
19	Socket Set Screw	.250-20 x .312	1
20	Collar	SC-37	1

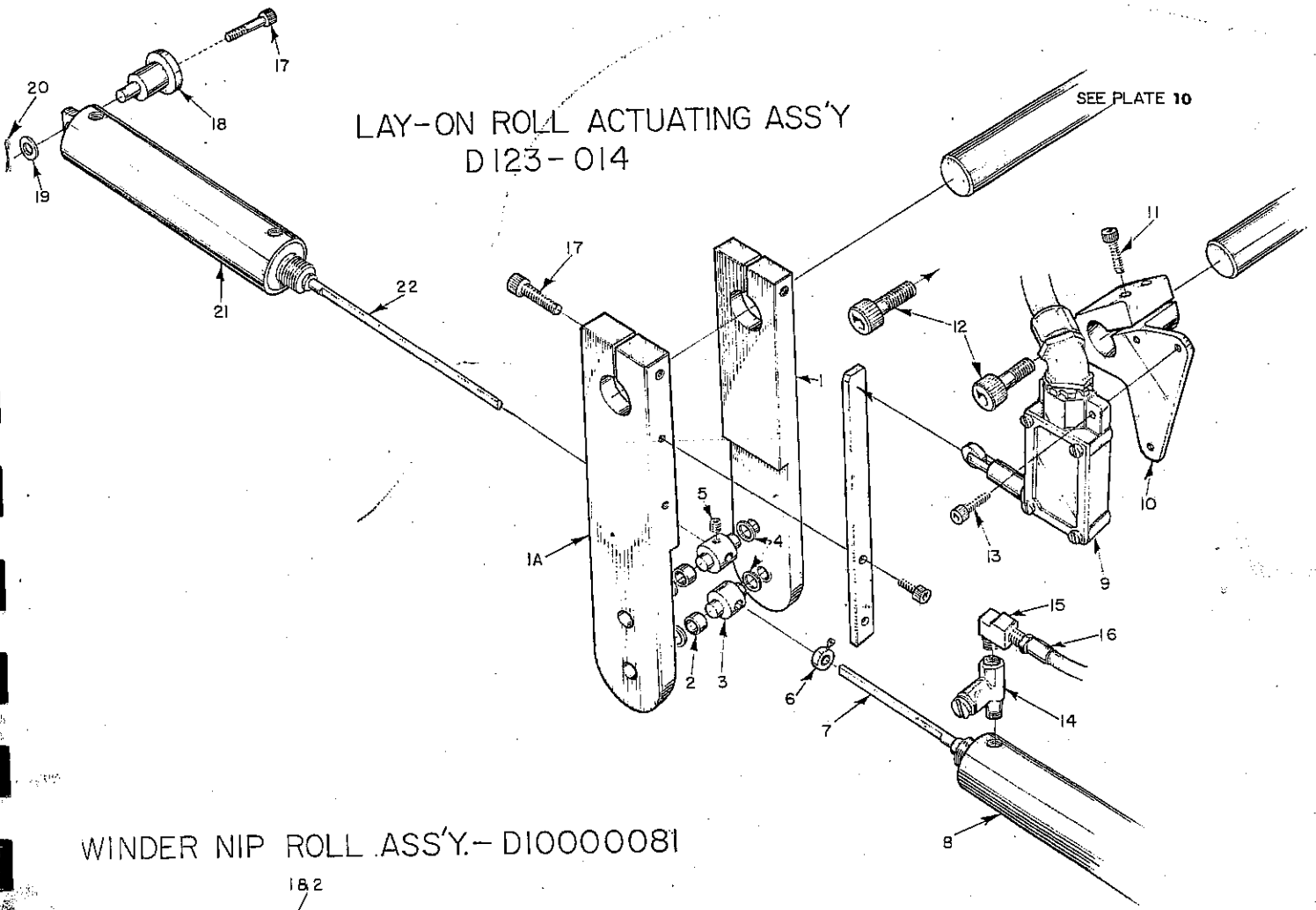
COUNTER ASSY. USED ON ALL WINDERS

1	Socket Set Screw	1/4-20 x 1/4	2
2	Collar	1597	1
3	B l a n k		1
4	Counter	ES9513	1
5	Plate	BB1072 x C2-0119-300	1
6	Socket Head Cap Screw	10-32 x 1/2	2

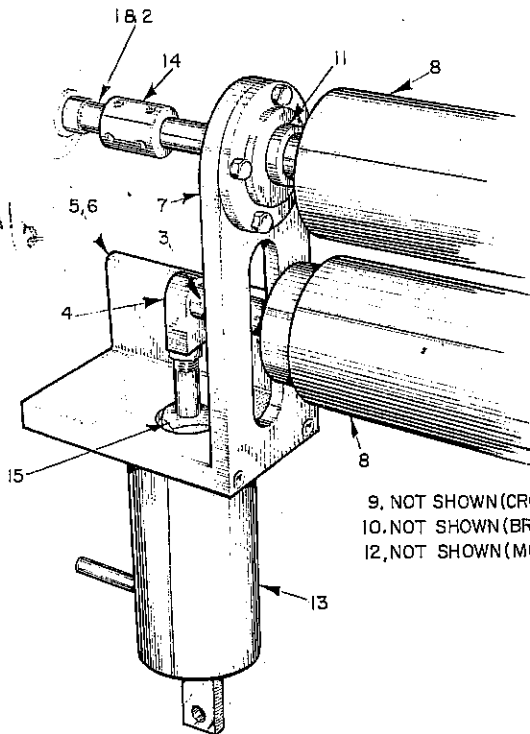


PLATE WC-19

LAY-ON ROLL ACTUATING ASS'Y D123-014



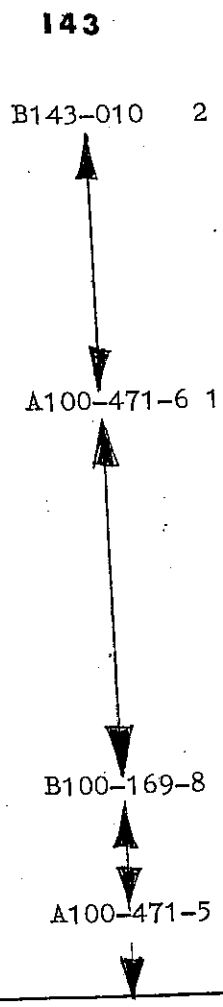
WINDER NIP ROLL ASS'Y.- D10000081



9. NOT SHOWN (CROME ROLL)
10. NOT SHOWN (BRG. R.S.)
12. NOT SHOWN (MOTOR)

LAY-ON ROLL ACTUATING ASSY.

KEY NO.	NAME & DESCRIPTION	PART NUMBER			QTY.
		123	124	125 131	
1	Link, Actuator	B123-013			2
	Link, Actuator	B123-018			2
2	Bearing		B124-004		
3	Shaft		J-108		
4	Washer, Brass		A100-862		2
5	Socket Set Screw		1/4 O.D. x 5/16 I.D.		4
6	Collar		x 3/32		1
7	Rod, Extension		5/16-18 x 7/8		1
8	Cylinder, Type A		3/8 Bore		1
9	Limit Switch		A100-471-4		1
10	Bracket		2" Dia. x 4" Stroke		1
11	Screw		BAF1-2RQN8		1
12	Socket Head Cap Screw		B100-496		2
13	Socket Head Cap Screw				2
14	Valve, Control (Schrader)		3250-A		2
15	Male Elbow, 1/4 x 1/4 NPT		69 x 4A		1
16	Air Hose Connector		(1/4 x 10 1/2)		1
			(1/4 x 9)		1
17	Socket Head Cap Screw		3/8-16 x 1 1/2		4
18	Stud		B100-169-8		2
19	Washer, Flat		Std. 1/2		2
20	Cotter Pin		1/16 x 1		2
21	Cylinder, Type C		2 Dia. 3" Stroke		1
22	Rod, Extension		A100-471-3		1



WINDER NIP ROLL ASSY.

1	Shaft Extension W/Clutch	B10000103	1
2	Shaft Extension W/O Clutch	B10000102	1
3	Shaft Rubber Roll	A10000082	1
4	Adaptor, Nip Cylinder	A100-409	1
5	Bracket, L.H.	C10000062-1	1
6	Bracket, R.H.	C10000062-2	1
7	Plate, Mounting, R.H.	B100-395-1	1
7a	Plate, Mounting, L.H.	B100-395-2	1
8	Roll, Rubber	C123-016	1
9	Roll, Chrome	C123-015	1
10	Bearing	MSF-20	1
11	Bearing	MFC-24	2
12	Motor, 5:1 (Dynamatic)	1/2HP, 1600 RPM	1
13	Air Cylinder, Type A	3" Bore 3" Stroke	2
14	Coupling, Sleeve	CR-16-1/4 KW	1
15	Nut		

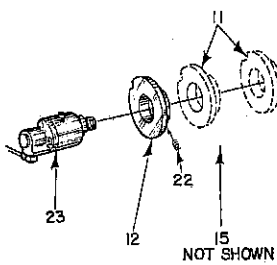
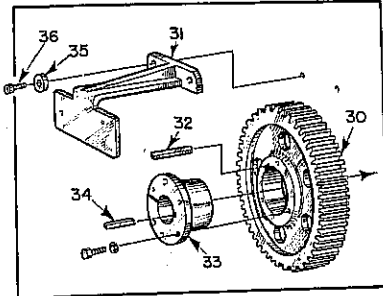


PLATE WC-20

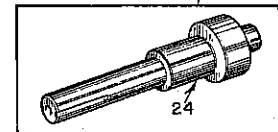
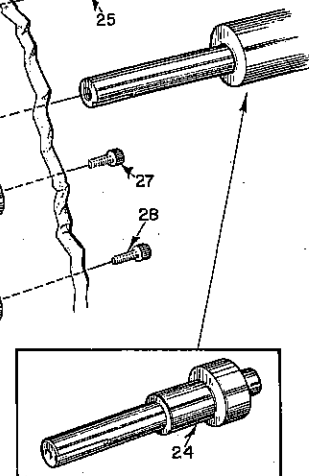
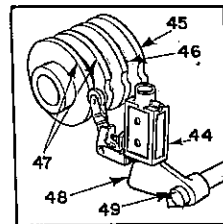
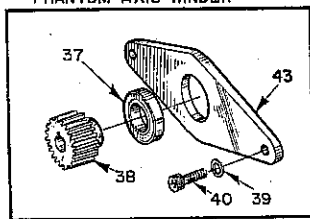
INDEXING DRIVE ASS'Y. D1000083

19 SWITCH NOT SHOWN

PHANTOM AXIS WINDER

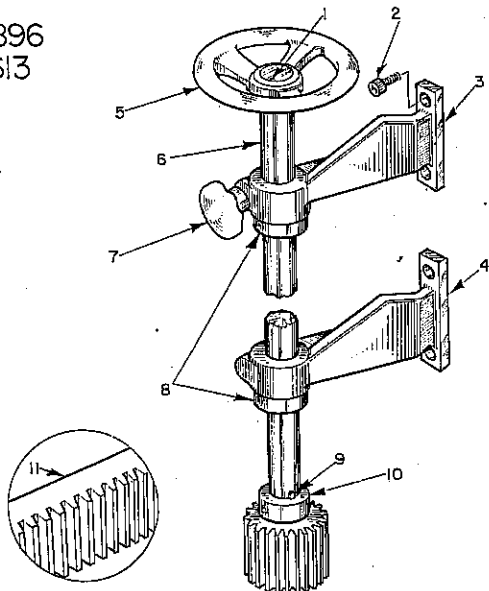


PHANTOM AXIS WINDER

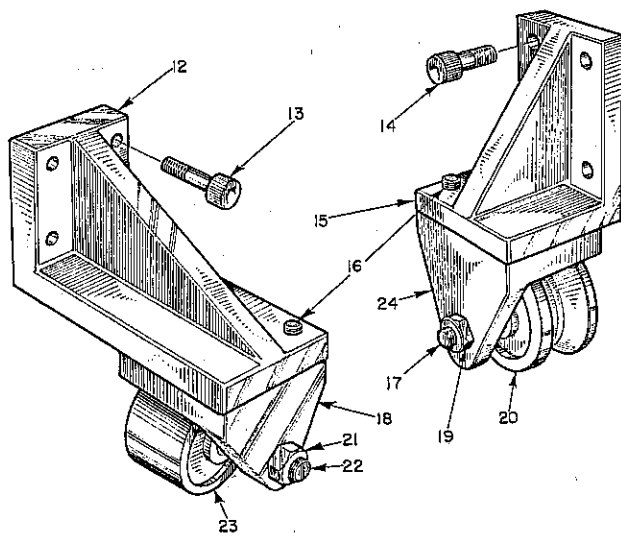


PHANTOM AXIS WINDER

ADVANCE & RETRACTING ASS'Y. D2896 D2613



CASTER ASS'Y. NO PARTS LIST- USE KEY NO. ONLY



INDEXING DRIVE ASSY.

KEY NO.	NAME & DESCRIPTION	125 131		143		130	
		PART NUMBER	QTY.				
1	Pinion	A10000099	1	B100-076	1	B006-004-4	4
2	Spacer, Indexing Motor	A10000100	3				
3	Bushing, Index Gear	A10000083-1	1				
4	Key						
5	Screw						
6	Washer						
7	Key	B006-002-7	1				
8	Spacer, Limit Switch	B006-002-9	1				
9	Spacer, Shaft, L.H.	A10000309	1				
10	Arm, L.H. Mounting	B10000327	1				
11	Cam, Sequence	B10000328	1				
12	Cam, Winding	B10000091	1				
13	Gear, Indexing	B100-496	3			B100-217-6	1
14	Bracket, Limit Switch					SFC-34	
15	Cam, Indexing	MFC-36	1	MFC-48	1		
16	Bearing						
17	Bolt						
18	Reducer, Motor 3/4 HP W/Brake 198:1	Windsmith 6MCVDW	1			367 1/2:1-1/2 HP .800 rpm-6MCVDW	
19	Limit Switch	BAF1-2RQNS-LH	2				
20	Limit Switch	DTF2-2RQNS-RH	1				
21	B l a n k					3/8-16 x 3/8	
22	Socket Set Screw	1105					
23	Deublin Union (Rotary Seal)	C10000041	1				
24	Shaft, Turret Arborless Indexing Arbor Type	C10000063	1	B100-092	1	B100-301-1	1
25	Socket Head Cap Screw	1/2-13 x 6 1/2					
26	Socket Head Cap Screw	3/8-16 x 1 1/4					
27	Socket Head Cap Screw	1/2-13 x 1 1/2					
28	Socket Head Cap Screw	1/2-13 x 1 1/2	1	B100-075			
29	Bracket			B100-094	1	B100-415	1
30	Gear			A100-095	1	C100-386	1
31	Bracket						
32	Key			A100-095	1	SF-2 1/8 Bore- 1/2 K.W.	1
33	Bushing						
34	Key					B005-001-13	
35	Washer			.375-16 x 1.25		1/4-20 x 1 1/4	5
36	Socket Head Cap Screw					MRC-114-KSZZ	1
37	Bearing, Ball					B130-005	1
38	Pinion					B005-001-19	2
39	Washer, Special					3/4-10 x 1 3/4	4
40	Socket Head Cap Screw					5/8-11 x 2	4
41	Hex. Head Cap Screw	5/8-11 x 2	4			5/8	4
42	Washer, Flat	5/8	4			B100-548	1
43	Support, Bearing						
44	Switch	BTE-2RQZ					
45	Cam, Sequence	B10000327					
46	Cam, Winding	B10000328					
47	Cam, Winding	B10000351					
48	Bracket	B10000800					
49	Shaft	B006-002-8					

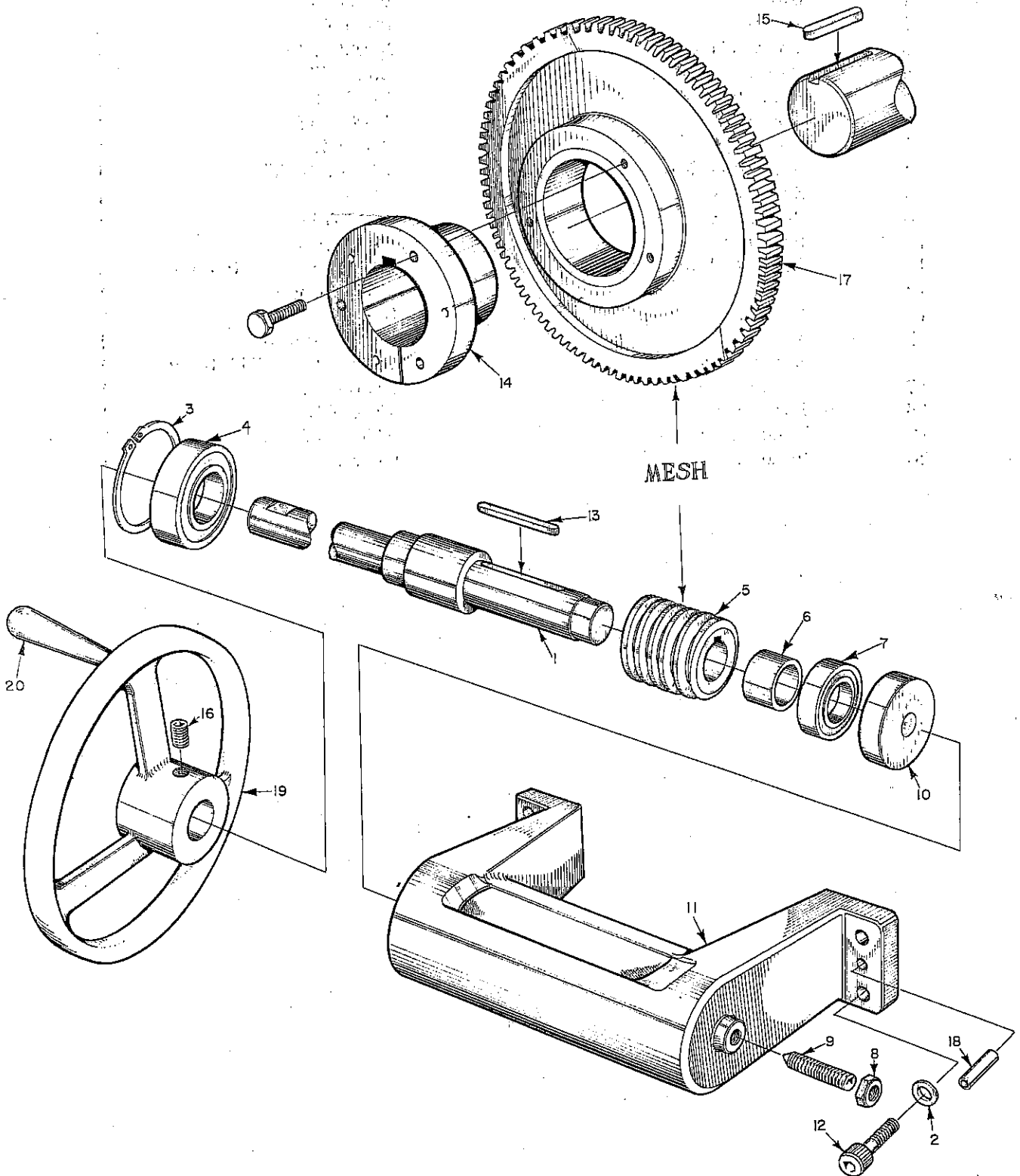
ADVANCE AND RETRACTING ASSY.

1	Key	3/8 Sq. x 1 5/8
2	Socket Head Cap Screw	3/8-16 x 1
3	Bracket	C2740
4	Bracket	C2740.
5	Hand Wheel	GL #5
6	Shaft	
7	Handle	HK-6A
8	Collar	SC-87
9	Key	1/4 Sq. x 2
10	Spur Gear	NH16-B
11	Rack	L519



PLATE WC-21

TURRET INDEX (MANUAL-D100-145)



TURRET INDEX - MANUAL

<u>KEY NO.</u>	<u>NAME & DESCRIPTION</u>	<u>123</u> <u>124</u> <u>126</u> <u>PART NUMBER</u>	<u>QTY.</u>
1	Shaft	B100-119	1
2	Washer	B005-001-2	4
3	Snap Ring	N5000-244	1
4	Bearing	206-SZZ	1
5	Worm Gear	6-1086K	1
6	Spacer	A100-147	1
7	Bearing	204-SZZ	1
8	Hex. Jam Nut	.500-20-UNF	1
9	Set Screw	A100-172	1
10	Retainer	A100-121	1
11	Housing	C100-106	1
12	Socket Head Cap Screw	.375-16 x 1.50 Long	4
13	Key	.188 Square	1
14	Bushing	S.K.	1
15	Key	.500 Square	1
16	Set Screw	.625-11 x .750 Long	1
17	Worm Gear	B100-150	1
18	Roll Pin	.500 01A	1
19	Hand Wheel	B100-117	1
20	Handle	MT-62	1