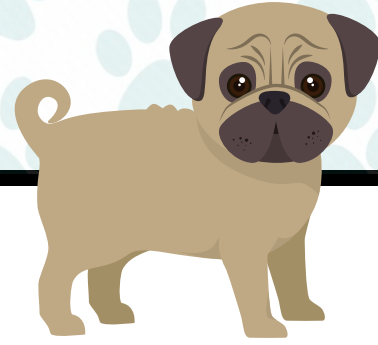
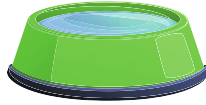


# ADOPTING A NEW DOGGY

## The Must-Haves

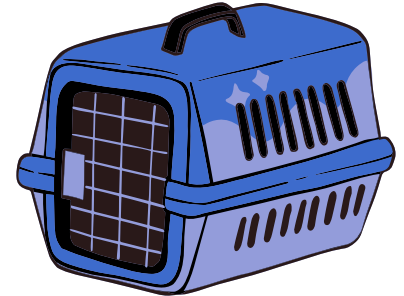
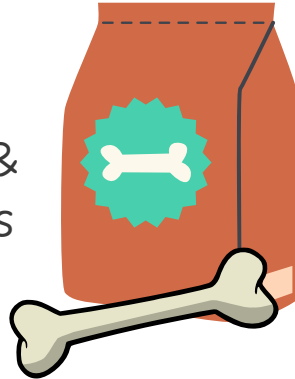


Water & food dishes  
(avoid plastic)



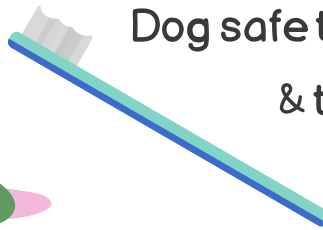
Doggy safe  
Shampoo

Food &  
Treats



Crate

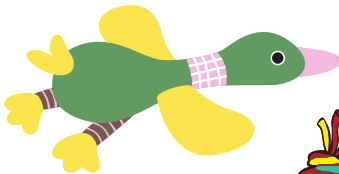
Dog safe toothbrush  
& toothpaste



Brush



Interactive and  
solitary toys



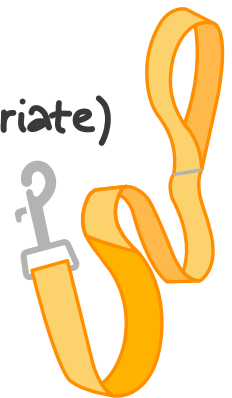
Safety proofing for  
cords and outlets



Clawdippers



Collar (size appropriate)  
& Leash



**toe beans**<sup>®</sup>

www.toe-beans.com



@furrytoebeans